



## THE OAK ANCHOR.

FOR SOFT OR HARD COAL, COKE OR WOOD.

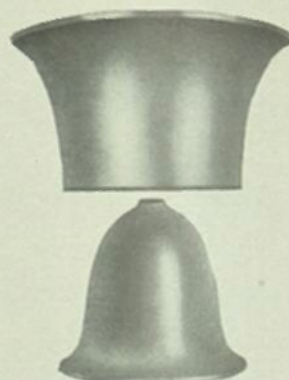
Air Tight.

No.	List Price	List Price Full Nickel	Diameter	Height to Collar	Weight	Circumference Pipe Collar	Code Word
612	\$18 50	\$20 00	12 in.	38 in.	141 lbs.	19 in.	Lift.
614	22 50	24 00	14 in.	40 1/2 in.	180 lbs.	19 in.	Ligan.
616	27 50	29 25	16 in.	44 in.	245 lbs.	22 1/4 in.	Lictor.
618	32 50	34 25	18 in.	47 1/2 in.	287 lbs.	22 3/4 in.	Libral.
Self Feeder, for Hard Coal, extra add to list No. 614, \$2.25; 616, \$2.75; 618, \$3.25.							Leash.
When Full Nickel is wanted.							Leaven.

A first-class air tight construction in Oak Stoves, carefully fitted and mounted; heavy steel plate body; beautiful roccoco ornamentation, unusually well proportioned and symmetrical lines. Extra deep fire pot to protect steel plate from discoloration by fire, constructed with heavy ribs on inner side, a most effective Hot Blast holding coal away from fire pot, making it more durable and less liable to crack while admitting an abundant supply of air for perfect combustion, also has triple safe joint ground into ash box, no leak. Large double feed door with Alaska turn key and splendid mica illumination with smokeless device. Air Tight Ash Box; Ash Door and Draft Slide ground and fitted to prevent leakage of air this means control, any desired degree of heat and consequently, economy. Keeps fire twelve to twenty-four hours. Draw center grate, works on ball bearings, shakes from outside with slight effort, no dust, easy and cleanly; has large surface, hence perfect combustion, is readily removed through ash pit door. Large ash pan. Swing off urn top, boiler hole below. The new style Foot Rail with attached Skirting or Screen, deflects heat to the floor, but does not become tarnished; also prevents sight of fire bowl when discolored.

Nickel-plated Parts: Urn top, top ring, both panels in feed door, round foot rail, with attached Skirting, draft slide, grate shaker, knobs and turn keys, nickel and bronze urn. Full nickel finish has in addition to above parts four feet and skirting base, nickel plated.





## SMOKE AND GAS

### CONSUMING DEVICE

AS APPLIED TO THE

## "OAK ANCHOR,"

ILLUSTRATED ON OPPOSITE PAGE.

To the left is represented a side Reflector and at the bottom a Bell Reflector as they appear before being placed in stove.



Above the Reflectors are shown in the position occupied in the "Oak Anchor" ready to ignite and consume soot, smoke and gases when heated.

## THE OAK ANCHOR SMOKE CONSUMER.

Air Tight, for Soft or Hard Coal, Coke or Wood.

No.	List Price	List Price Full Nickel	Diameter	Height to Collar	Weight	Circumf. Pipe Coll.	Code Word
612	\$23 50	\$25 00	12 in.	38 in.	163 lbs.	19 in.	Likol.
614	28 50	30 00	14 in.	40½ in.	208 lbs.	19 in.	Lilok.
616	34 50	36 25	16 in.	44 in.	279 lbs.	22¼ in.	Lipot.
618	40 50	42 25	18 in.	47½ in.	329 lbs.	22¼ in.	Lifos.
When full nickel is wanted.							Lentven.

We have secured from Messrs. Oblinger & Beatty, patentees and owners, license to manufacture this marvelous invention, and are now prepared to offer the exclusive sale of this stove to live, wide-awake, pushing dealers. No such chance will appear again in a life-time. Mankind has looked forward for years' confident that some genius would invent a simple device for consuming the valuable gases and smoke given off by our present imperfect methods of burning soft coal. The Hot Blast Tube, the Hot Blast Rings, Air Jets, etc. have all been tried, but they consume only a small fraction of the gases and smoke, and no device that permits *open combustion*, as these do, will ever realize reasonable expectations of the vast economy to be achieved. Two things have been shown to be absolutely essential by the thousands of devices and years of experiments: 1st, The gases and smoke must be confined, otherwise they will escape up the chimney unburned. 2d, Great heat is necessary, applied direct to the gases and smoke above the fire itself.

All appliances that have contained these essential and successful requirements have been so complicated and costly as to preclude their common use. All really great inventions are SIMPLE, and as an evidence of the great simplicity of this invention no directions are necessary beyond turning the damper (handle toward the front) when starting fire, (this gives direct draft same as if the smoke consumer was not in the stove) in ten or fifteen minutes, *reverse the damper* the Bell Reflectors will then have become hot, and the reversal of the damper will force all of the gases and smoke into the hollow red hot bell, suspended over the fire, and then between it and the outer bell, the opening between the two being ¾ of an inch, all of the soot, gases and smoke will be consumed instantly. The roar of the gases can be heard while burning and their combustion can be seen through the small damper in pipe collar, but best of all, their perfect combustion can be felt in the great heat given off and the small amount of coal consumed. After the Bell Reflectors are once heated the burning gases will keep them hot, so that a slow fire may be kept. The black coal smoke turns white like steam as it comes from the chimney immediately after the damper has been turned and the reflectors are hot, and as they become highly heated the white smoke gradually disappears, and after the gases are all burned the coal will be found coked and will burn to light ashes without clinkers.

Lose no time, apply immediately and get the best seller in stoves ever put forward in this century.