

FOLLOW THE LEADERS

IN DRIVE-IN MANAGEMENT... LET

LITTER BUG

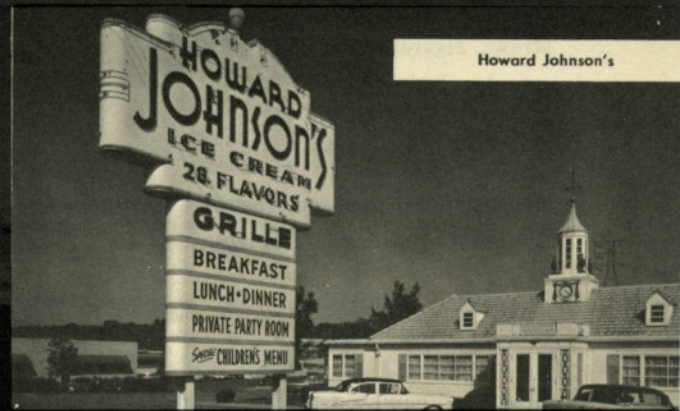
KEEP YOUR CURB CLEAN

where your customers judge your cleanliness

Frisch Big Boy



Howard Johnson's



Hiltner-Burgers, Hamilton, O.



Hal's Drive Inn, Highland Park, Ill.



Don't let litter on your curb arouse doubt about your inside cleanliness. Now in its fifth year, the Litter Bug has solved the problem of *outside* sanitation for more and more of the big names in drive-in restaurants. Like them, you keep your kitchens scrupulously clean. But your customers judge your cleanliness by what they see *outside*,

on your curb. Greatest boon since the auto to outdoor dining and amusement operations, the Litter Bug keeps your premises constantly free of litter, even during rush hours. Gladdens your carhops who tend to "grandstand" while operating it. Impresses your customers, too, with your modernity.

LITTER BUG

**CUTS COSTS,
KEEPS CURB CLEAN,
IMPRESSES PATRONS**

- Does in minutes what takes hours with a broom. May be used even during rush hours.
- Picks up all paper litter—trays, boxes, spoons, straws, cigarette stubs— but does not remove gravel surfacing.
- No extra help needed.
- Uses vacuum alone—no brushes, chains, belts or sprockets to lubricate or replace.
- Powered by dependable 4-cycle gas engine, operating at 2/3 rated RPM.
- Sturdy aluminum propeller “bales” litter into giant bag.
- Specially designed replaceable coarse-weave inner bag *inside*. NEW FILTER-TYPE DUST-PROOF OUTER BAG.

THE ORIGINAL

This is the genuine Litter Bug, made and warranted by the originator and manufacturer since 1952 of leaf and litter pick-up machines.



THREE MODELS

30-Inch--for large areas, frequent use -- with 3 HP Clinton cast Iron engine

24-Inch Heavy Duty -- for tight spaces, small areas, frequent use -- with 3 HP Clinton cast Iron engine

24-Inch "Jr."--for small areas, intermittent use--with 2½ HP Lauson aluminum engine

RICHARD B. MCFADDEN
MANUFACTURERS REPRESENTATIVE
County Rd., Clarence Center, N. Y.