

The all new "Turnpike Cruiser," was developed, based on the desire and preference of the public for a new ride that permits full passenger control and operation with a maximum of safety. Over thirty-five years of park operation and the skill and knowhow of modern engineering methods and the latest in modern tools have produced a ride having a minimum of maintenance problems with unparalleled safety features and customer appeal.

FOR BIG INCOME INSTALL A TURNPIKE RIDE IN YOUR PARK

Our engineers are available to lay out your track, design station and station controls.

Terms available.

STREIFTHAU MFG. CO., MIDDLETOWN, OHIO

LITHO IN U.S.A.

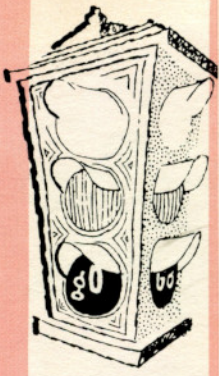
America's Hottest Ride

THE TURNPIKE CRUISER



Following are several of the present parks having installed a Streco Turnpike Ride:

- CONEY ISLAND, Cincinnati, Ohio.
- LAKE LANSING PARK, Lake Lansing, Haslett, Mich.
- CEDAR POINT, Sandusky, Ohio.
- PACIFIC OCEAN PARK, Santa Monica, Calif.
- SPORTS CENTER, Wichita, Kansas.
- PARAGON PARK, Nantasket Beach, Mass.
- RIVERSIDE PARK, Indianapolis, Ind.
- WILLOW GROVE PARK, Willow Grove, Pa.
- CAMDEN PARK, Huntington, W. Va.



YOUR SIGNAL FOR GREATER PROFITS!



SUCCESS STORY OF STRECO TURNPIKE RIDE

A STORY of success unequalled in the history of amusement devices unfolded at LeSourdsville Lake, Middletown, Ohio, in 1956 and repeated the performance in 1957, 1958 and 1959, by the building of a Streco Turnpike Cruiser Ride, grossing from \$35,000 to \$40,000 each season, for a total of sixteen weeks. The Turnpike Ride was installed with fifteen cars, an attractive front, over 1300 feet of concrete roadway, lighting for entire track, signs, landscaping and guardrail and has been ridden by all age groups, averaging 200,000 to 253,000 persons per season.

From this beginning, numerous parks have installed the Turnpike Ride, and in most instances have grossed more money than any other ride in the park.

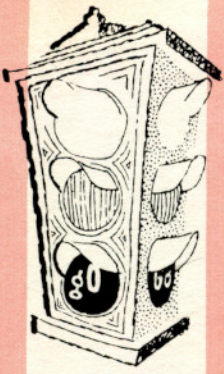
One park grossed \$93,000 the first year of installation, which was repeated the second year, showing no dropoff in popularity nor income.

There is no age limit to riders of the Turnpike. Youngsters and oldsters all like the Turnpike. Girls and women as well as boys and men, make it the most popular ride in every park where installed. Rerides are popular to all ages, 10 to 20 rerides being nothing unusual. In normal use with an average length of track, the total time of the ride is less than two minutes which includes loading and unloading. Most riders guess that the time is much longer. *You need a Turnpike Ride in your park!*

M
pe
re
ne
rid
ar
be
st
le
la
in

Pe
air
eli
co
an
bo
th
ta
pr
Cr
ne
an

STRE



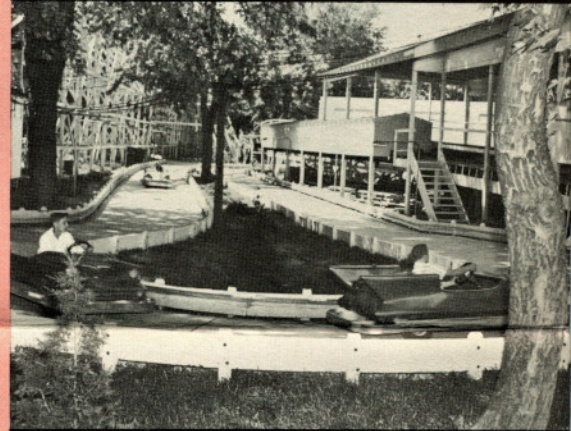
STOP! LOOK... THE ALL NEW TURNPIKE CRUISER



Realism in rides and attractions are a must in this modern age and the "Turnpike Cruiser" offers unlimited opportunities to duplicate modern highway and turnpike conditions. Overpasses, straightways, traffic signs and scenery can be duplicated, giving tremendous customer appeal and providing great possibilities for promotions with local safety councils and municipal authorities.

Many versatile and flexible installations possible permitting the use space not otherwise revenue producing. Although it isn't entirely necessary to have the "Turnpike Cruiser" ride within full view of patrons, it is advisable and recommended. The track can extend between buildings or underneath coaster structures with a suggested radius of not less than 10' on any 180° turns. Trees and landscaping play a desirable part in the track installation however, are not entirely necessary.

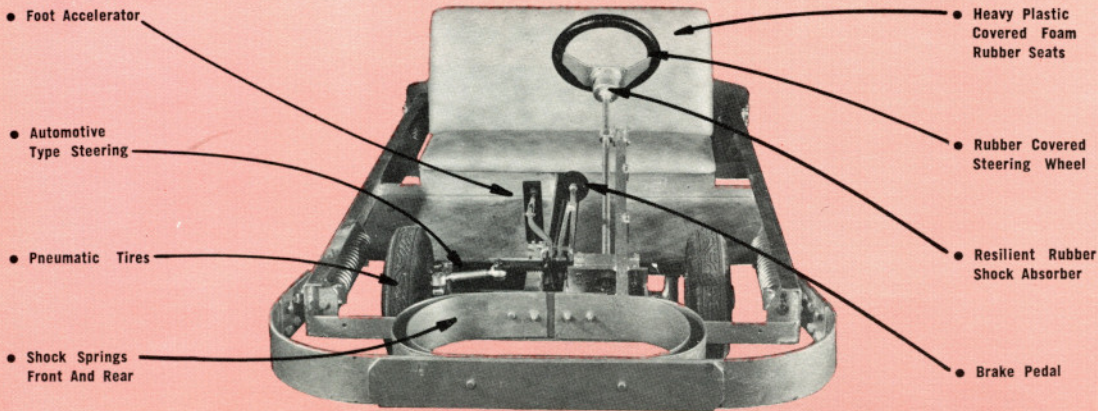
Positive control is provided by an unprecedented, air operated braking system which definitely eliminates all control hazards previously common in this type ride both for the customer and operator. A simple small hand lever both opens and closes the brake allowing the operator to control entrance to ride and take tickets for rerides. Each brake provides positive control for two "Turnpike Cruisers", and eliminates ramming and the need for operators to stand in the roadway and stop cars by physical strength.



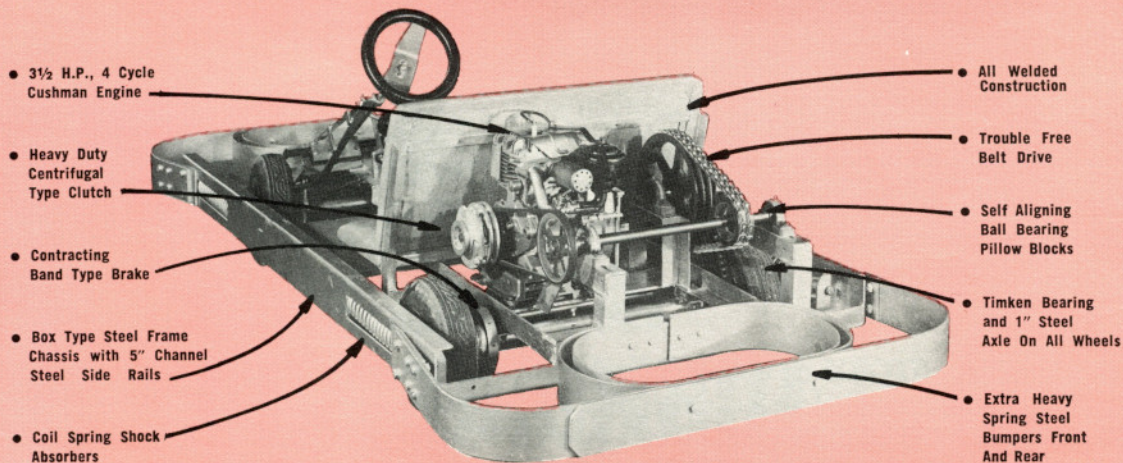
STREIFTHAU MFG. CO.

R. R. 1, MIDDLETOWN, OHIO

(FRONT CHASSIS VIEW)



(REAR CHASSIS VIEW)



Engine and drive easily accessible through trunk lid

SPECIFICATIONS

TURNPIKE CRUISER AND RELATED EQUIPMENT

TURNPIKE CRUISER:

- 8' 6" Overall Length
- 4' 0" Overall Width
- 12" Pneumatic Tires
- 8 to 1 Steering Ratio
- Timken Wheel Bearings
- Brakes — Contracting Band Type, Self Energizing
- 4 Gal. Gasoline Tank Capacity
- ENGINE: Cushman Husky Air Cooled
- Four Cycle Enclosed centrifugal, flyball governor, adjustable from outside of engine.
- 3½ Horsepower
- 3200 RPM
- 7 to 12 MPH speed range of car
- BUMPERS: ¾" spring steel backed up by shock absorbing, heavy duty coil springs, front and rear.
- BODY: Steel reinforced extra heavy fiber glass.
- CHASSIS: Heavy steel framing members, box type construction.

530#

TRACK RECOMMENDATIONS:

- One turnpike cruiser for each 100 feet.
- Minimum of 10 feet for a passing track layout.
- Minimum of 7 feet for a nonpassing track layout.

AIR OPERATED CONTROL BRAKE:

Necessary component parts including proper size air cylinders, brackets, casters, air hose, fittings, etc. available. Contact Streifthau Mfg. Company for further information.



AMERICAN

THE U.S.A.

ST

Te

sta

On

NI

