

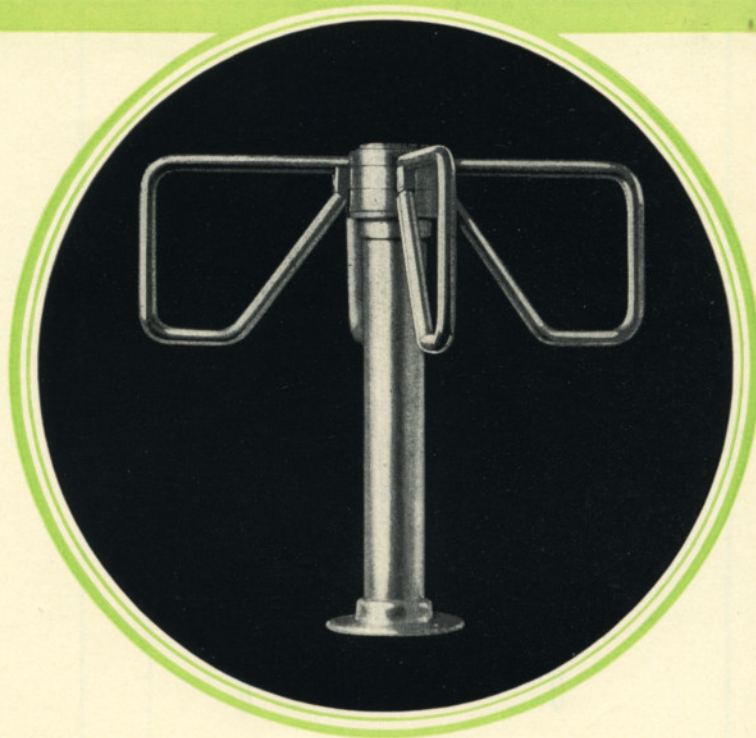
No. 20 DEEP ARM TRAFFIC CONTROLLER

A Turnstile Masterpiece

*A Beautiful, All Metal, One
Way, Non-Registering
Turnstile*

Created by PEREY, combining the skill and imaginative genius of the Master Turnstile Designers with the Best Features and Functions of the advanced turnstile art.

- Artistic Appearance**
- Feather-Light Arm Action**
- Heavy Duty Construction**
- Crash Proof**
- Automatic Speed-up Features**



Combining as Never Before These Advanced Features

CHECK THIS LIST

- Beautiful, All Metal Construction** — Designed by skilled engineers, styled by a famous commercial artist, made entirely of metals selected for their fine appearance combined with rugged durability. An ornament in any surroundings.
- Arms Discourage Crawling Underneath** — The deep arms are low enough to the floor to make it difficult to go underneath them, but are yet high enough so the legs won't touch them when going through.
- Featherweight Action — Non-Spinning** — Action of No. 20 Traffic Controller is feather-light. It is easy to use yet cannot spin, thus minimizing accidents.
- Rugged, Silent Back Lock** — Extra Powerful, of the latest improved type (arms cannot be turned backward). It operates silently, is unusually free from wear, gives long, dependable service.
- Heavy Duty Construction** — Ruggedly built using strong, husky parts with big factors of safety this Traffic Controller stands up in continuous service under heaviest traffic conditions.
- Pleasingly Contoured Arms** — Each arm is a continuous piece of tubing, shaped to a graceful contour, free from any projecting fittings.
- Ornamental Head Cap** — A pleasing finishing touch is added by the ornamental cap that tops the head, enclosing the operating mechanism.
- Sturdy, Graceful Pedestal** — The pedestal is unusually substantial and well proportioned. It completes and enhances the pleasing appearance of the turnstile.
- Attractive, Weatherproof Finish** — The aluminum arms with aluminite finish and enameled pedestal make an attractive appearance and give this Traffic Controller exceptional weather resisting qualities.
- Accident Preventives — Public Safety** — Extra precautions are taken to protect users against self injury due to carelessness or clumsiness. Surfaces are smooth finished, corners rounded, all mechanism enclosed.
- Easy to Install** — The turnstile is secured to the floor by means of bolts or lag screws through holes in the base flange.

Finish — Arms, aluminum tubing, aluminite finish. Pedestal, smooth, lustrous amphibian green enamel.

SPECIFICATIONS

Spread of Arms	38 in.
Height over all	35 1/8 in.
Height to Top of Arms	34 in.
Height to Bottom of Arms	20 in.
Net Weight (Approx.)	50 lbs.
Gross Weight, crated (approx.)	80 lbs.

CHOICE OF ROTATION

No. 20 Traffic Controller can be supplied for either clockwise (right hand) or counter-clockwise (left hand) rotation.

Please specify direction of rotation when ordering.



CLOCKWISE
(RIGHTHAND)

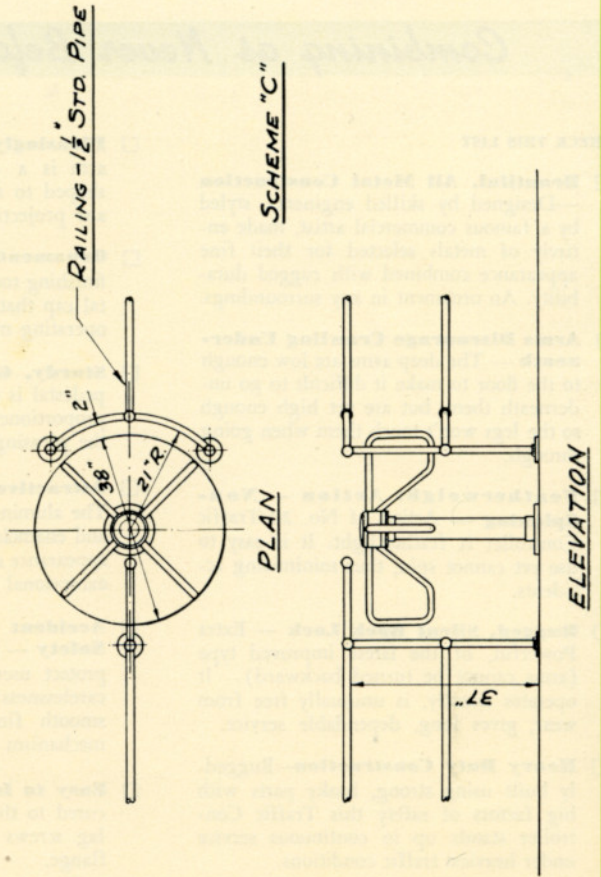
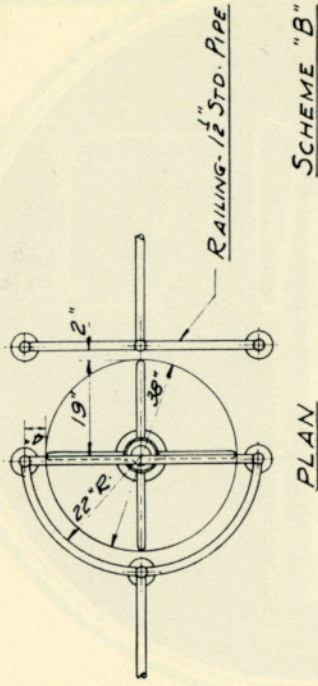
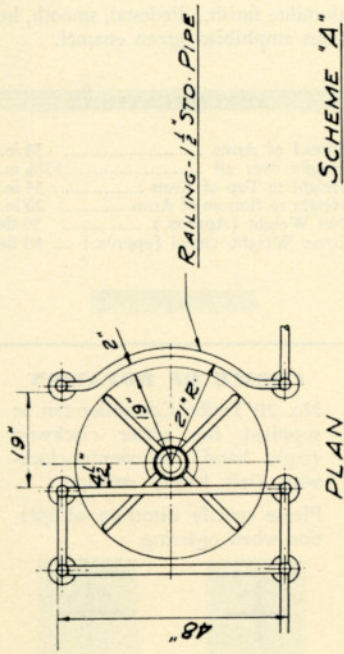


(LEFTHAND)
COUNTER-CLOCKWISE

PEREY TURNSTILE COMPANY

• 101 PARK AVENUE, NEW YORK 17, N. Y. •

See other side for typical installation layouts.



**TYPICAL INSTALLATIONS
OF THE
No. 20 TRAFFIC CONTROLLER**

The railings shown can usually be obtained locally. If not available consult us for source of supply.

PEREY TURNSTILE COMPANY
101 Park Avenue, New York 17, N. Y.