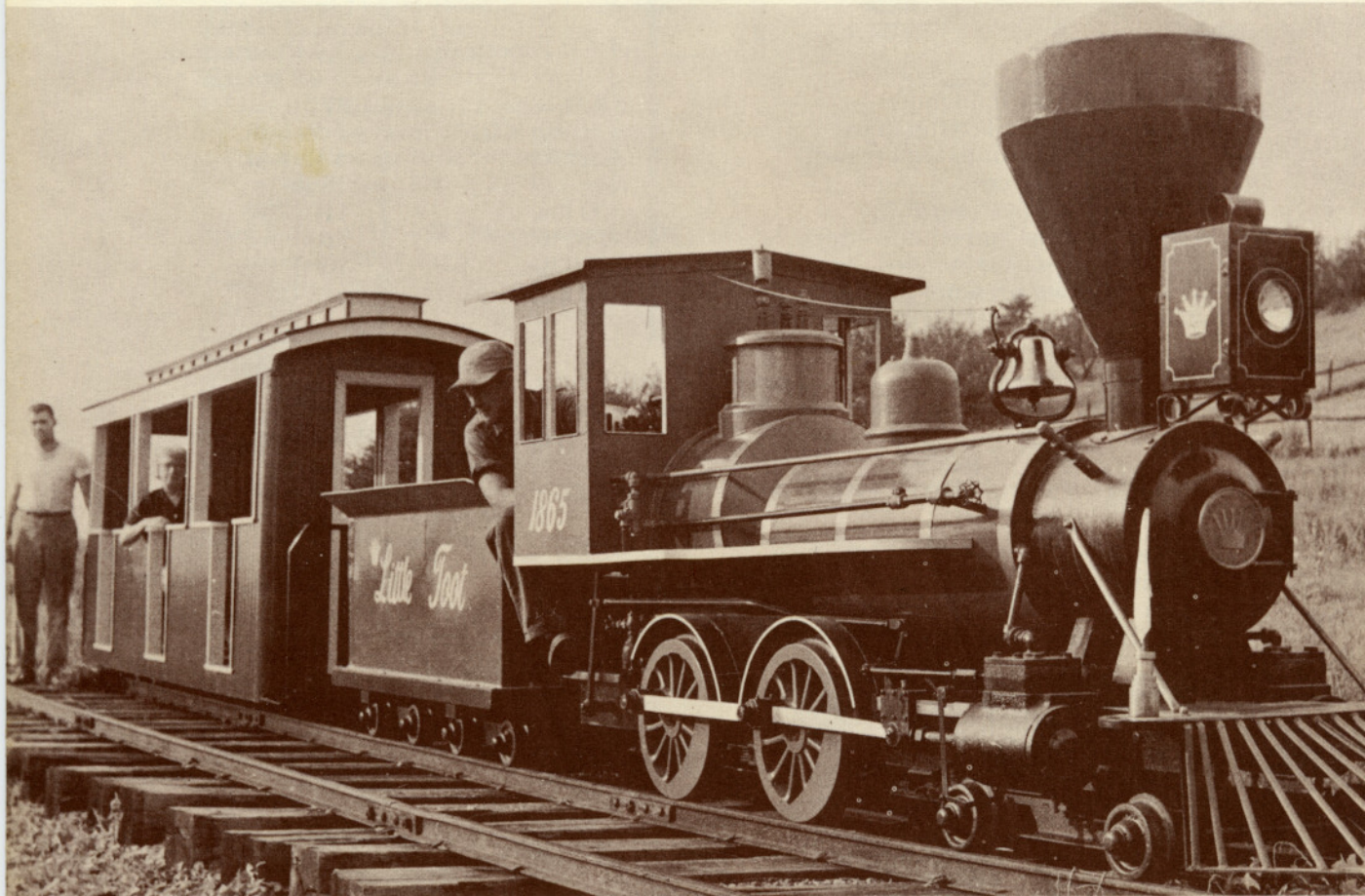


REAL STEAM RAILROADS

15" 16" 24" Gauge

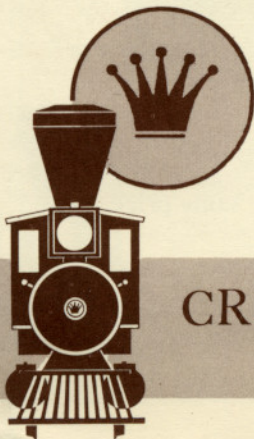
For Pleasure or Profit



24" Engine and Pioneer Coach

"Little Foot" is "REAL"
®

Real steam attracts more people and earns more money.
Now available to burn Propane as well as Coal.



CROWN METAL PRODUCTS COMPANY

Phone West Newton 1550

Wyano, Pennsylvania

Specifications

Locomotive

	15"★Gauge	24" Gauge
Type	4-4-0 American	4-4-0 American
Cylinders	3" bore 4" stroke	4½" bore 7" stroke
Length—engine and tender	12 ft.	19 ft.
Height—top of rail to top of cab	3 ft. 10 in.	5 ft. 3 in.
—top of rail to top of stack	4 ft. 6 in.	6 ft. 6 in.
Diameter of Drivers	11 in.	18 in.
Tractive effort	400 lbs.	1100 lbs.
Weight—engine and tender—dry	1750 lbs.	5500 lbs.
—engine and tender—working order	2200 lbs.	7000 lbs.
Boiler, working pressure (ASME—National Board)	150 lbs.	175 lbs.

All engines equipped with 2 injectors, 2 pop valves, bell, whistle, water gauge, steam gauge, blower, hand brake, and sander.

Cars - Open Gondola, Pioneer Coach, Gondola with Canopy.

	15"★Gauge	24" Gauge
Trucks	2-four wheel	2-four wheel
Length	10 ft. 5 in.	15½ ft.
Width	32 in.	46 in.
Height, Pioneer Coach or Canopy	6 ft.	6 ft. 4 in.
Seats	4	5 or 6
Capacity—Adults	8	10 or 12
—Children	12	15 or 18

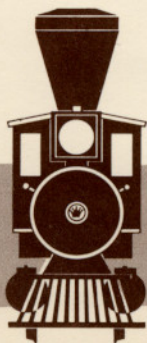
Track

	15 in.	24 in.
Gauge	15 in.	24 in.
Weight—recommended minimum per yard	12 lbs.	12 lbs.
Curve Radius—recommended minimum	45 ft.	45 ft.

Fuel

Hard coal, soft coal, briquettes, or coke Engine can be equipped to burn Propane at an extra charge of \$100 for 15 in. size and \$150 for 24 in. size.

★14" and 16" gauge also available at the same price.



CROWN METAL PRODUCTS COMPANY

Phone West Newton 1550

Wyano, Pennsylvania

Prices

	15" Gauge	24" Gauge
Locomotive and tender	\$4,695.00	\$9,000.00
Cars, including trucks—gondola type	550.00	785.00
Cars, including trucks—gondola type with roof	650.00	935.00
Pioneer Coach Model 1865	2,265.00	2,765.00
Rail and Accessories: for both 15" and 24" Gauges:		
Rail (12 lbs. per yard)	.50 per foot of rail	
15" gauge, 15 ft. lengths, 12# rail welded to steel ties sectional portable track, curved to make circle with 300 ft. circumference. Also straight sections available.	1.70 per foot of track	
Track Spikes—5/16" x 2 1/2" (Approximately 2230 pieces per 200# keg)	22.00 per cwt.	
Track Bolts 1/2" x 1 1/2"	.10 each	
Splice Bars	.70 per pair	
Cast frogs for 12# rail	75.00 each	
Switch points for 12# rail	25.00 each	
Hand throw switches	15.00 each	
Spike pullers	7.50 each	
Tie fork, for holding tie against rail	7.50 each	
Wishbone type rail bender	55.00 each	

Terms—

Net Cash, f.o.b. Wyano, Pa. C.I.T. financing available for deferred payments.

Warranty—

Any defective parts will be replaced, no charge, within 90 days after delivery.



24" Gauge

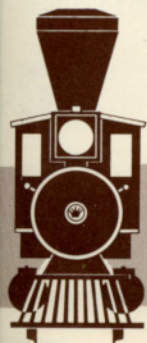


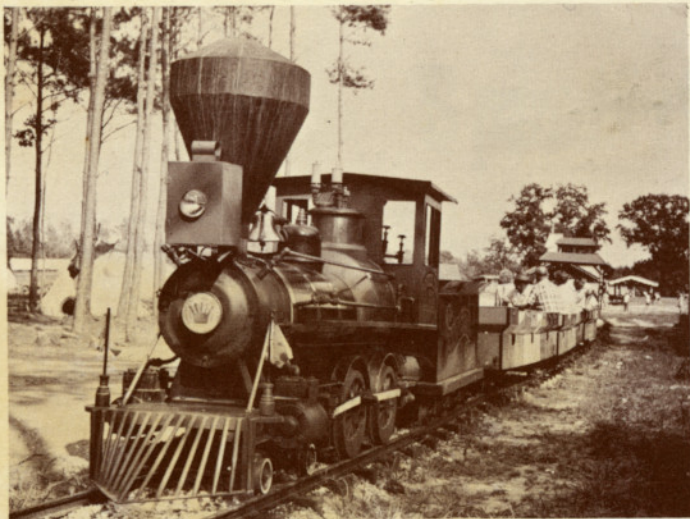
15" Gauge

CROWN METAL PRODUCTS COMPANY

Phone West Newton 1550

Wyano, Pennsylvania





24" Gauge



15" Gauge



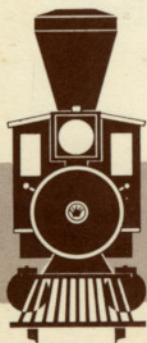
15" Gauge



Canopy Top Car 15" Gauge



15" Gauge



CROWN METAL PRODUCTS COMPANY

Phone West Newton 1550

Wyano, Pennsylvania