

February 1, 1966

To: Dr. C. Adams, Chairman of Ad Hoc Building Committee

From: Mrs. Christel McCanless, Librarian, Huntsville Campus Library

According to the June 1965 issue of Library Trends, book shelves rarely take more than thirty per cent of the total stack area. The remaining 70 per cent is used for access purposes. Using the current holdings of the Huntsville Campus Library, the following figures represent the most concrete calculation of the space needs for this library in the future:

1st range contains 30 ft. of shelving space  
2nd range contains 36 ft. of shelving space  
66 ft.  
5 ranges  
330 ft.  
3

990 sq. ft. for 39,000 volumes,  
or 1050 sq. ft. for 40,000 volumes which are currently in the Library, on order, or expected by September 1966. For 1050 sq. ft. of shelving space, a stack area of 3,500 sq. ft. would be needed for 40,000 volumes.

With next year's budget of \$2.5 million plus, we would be able to add 25,000 books at \$10 a piece, therefore:

1966	40,000 volumes	3,500 sq. ft.
1966/67	25,000 volumes	
1967/68	15,000 volumes	7,000 sq. ft.
1968/69	17,000 volumes	
1969/70	<u>17,000 volumes</u>	10,000 sq. ft.
	119,000 volumes	10,000 sq. ft.

The Standards of the Southern Association of Colleges and Schools state that "proper library seating accommodations are needed for at least one-fourth ( $\frac{1}{4}$ ) of the largest number of students on the Campus at any one period of the day." If, by 1970, 5,000 students are expected, the library should provide seating accommodations for 1250 students.

Using 18 sq. ft. (including access area) as a minimum working space per student, 22,500 sq. ft. would be needed. This square footage will vary between men and women, undergraduate students and doctoral candidates.

(Continued, Page 2)

In summarizing the areas needed, the following total develops:

10,000	sq. ft. for books
<u>22,500</u>	sq. ft. for students
32,500	
<u>2,500</u>	20 librarians at 125 sq. ft. each
35,000	sq. ft.

*Revised figures*

13,000

Growth and space needs in other areas can be expected to develop as follows:

Documents	--- 120 sq. ft per year	35,000
1970	--- 660 sq. ft.	<u>660</u>
		35,600

1000

Journals	--- 900 sq. ft per year	4,500
1970	--- 4500 sq. ft.	<u>4,500</u>
		40,160

5000

10 Microfilm readers

storage of films, etc.

300 sq. ft.
<u>40,460 sq. ft.</u>

500

Other activities within the Library which I am not able to ascertain accurately include:

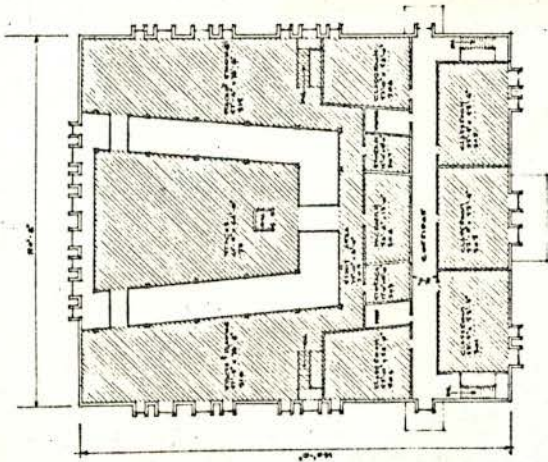
1. receiving and storing of uncataloged books
2. cataloging activity which includes labeling, pasting, etc.
3. Newspaper storage until microimages are available
4. card catalog and circulation desk
5. maps and audio-visual equipment
6. student assistants and most important access area for all these activities, at least:

8,000 sq. ft.
<u>48,460 sq. ft.</u>

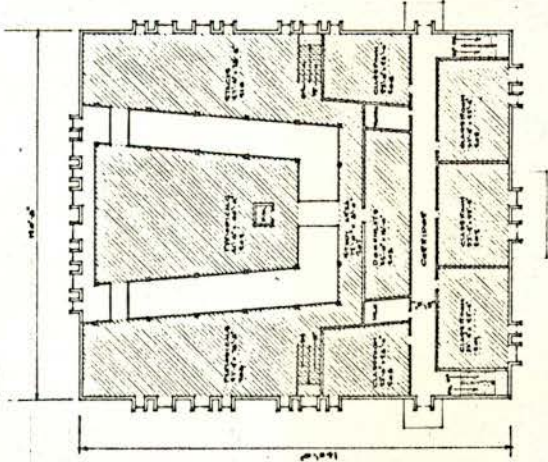
*Revised figures* 40,000

Currently the library occupies 3,500 sq. ft. and it will occupy an additional 10,000 sq. ft. in the Graduate Studies Building. As a permanent library is ~~built~~ <sup>built</sup>, the 13,500 sq. ft. will of course become available for other activities.

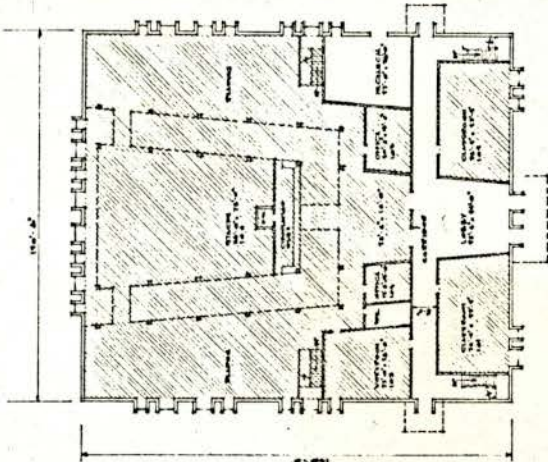
McCawley



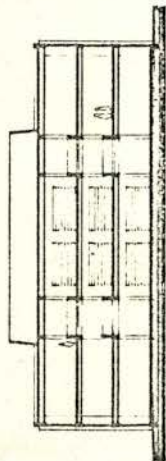
THIRD FLOOR PLAN



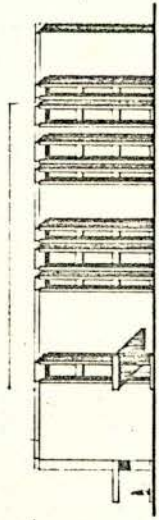
SECOND FLOOR PLAN



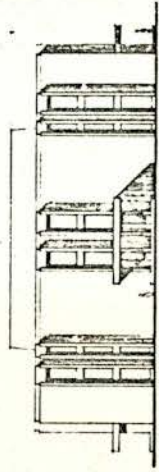
FIRST FLOOR PLAN



CROSS SECTION



SIDE ELEVATION



FRONT ELEVATION



GRAPHIC SCALE

	LICENSE NO. <b>5</b> STATE OF ALABAMA PROFESSIONAL ENGINEER
	LICENSE NO. <b>3</b> STATE OF ALABAMA ARCHITECT