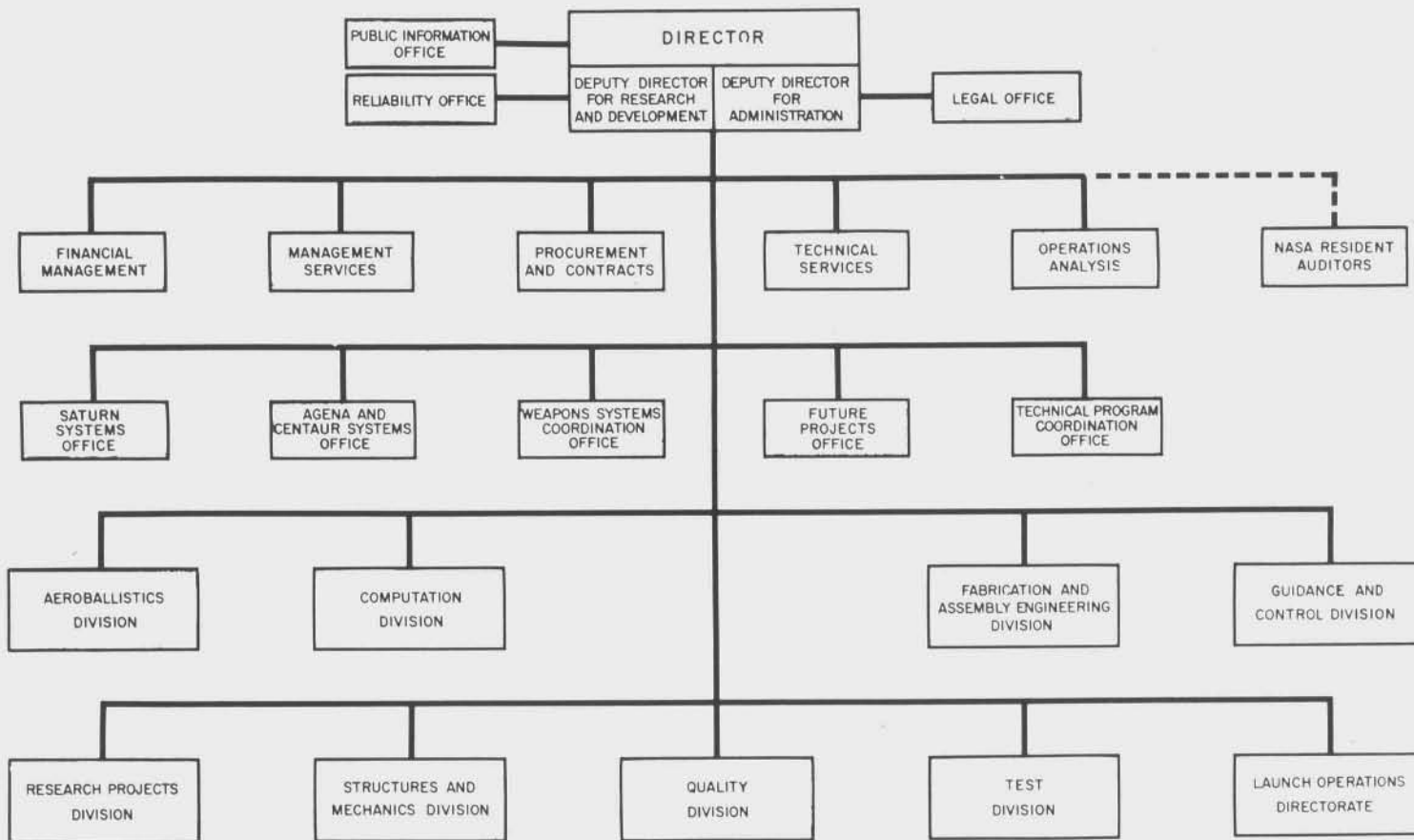


GEORGE C. MARSHALL SPACE FLIGHT CENTER



APPROVED *Wernher von Braun*
 WERNHER VON BRAUN
 DIRECTOR, MSFC
 DATE: 26 October 1960

1969
 Various organization charts of NASA-MSFC during
 1960-1969
 11.2

26 October 1960
 11.2

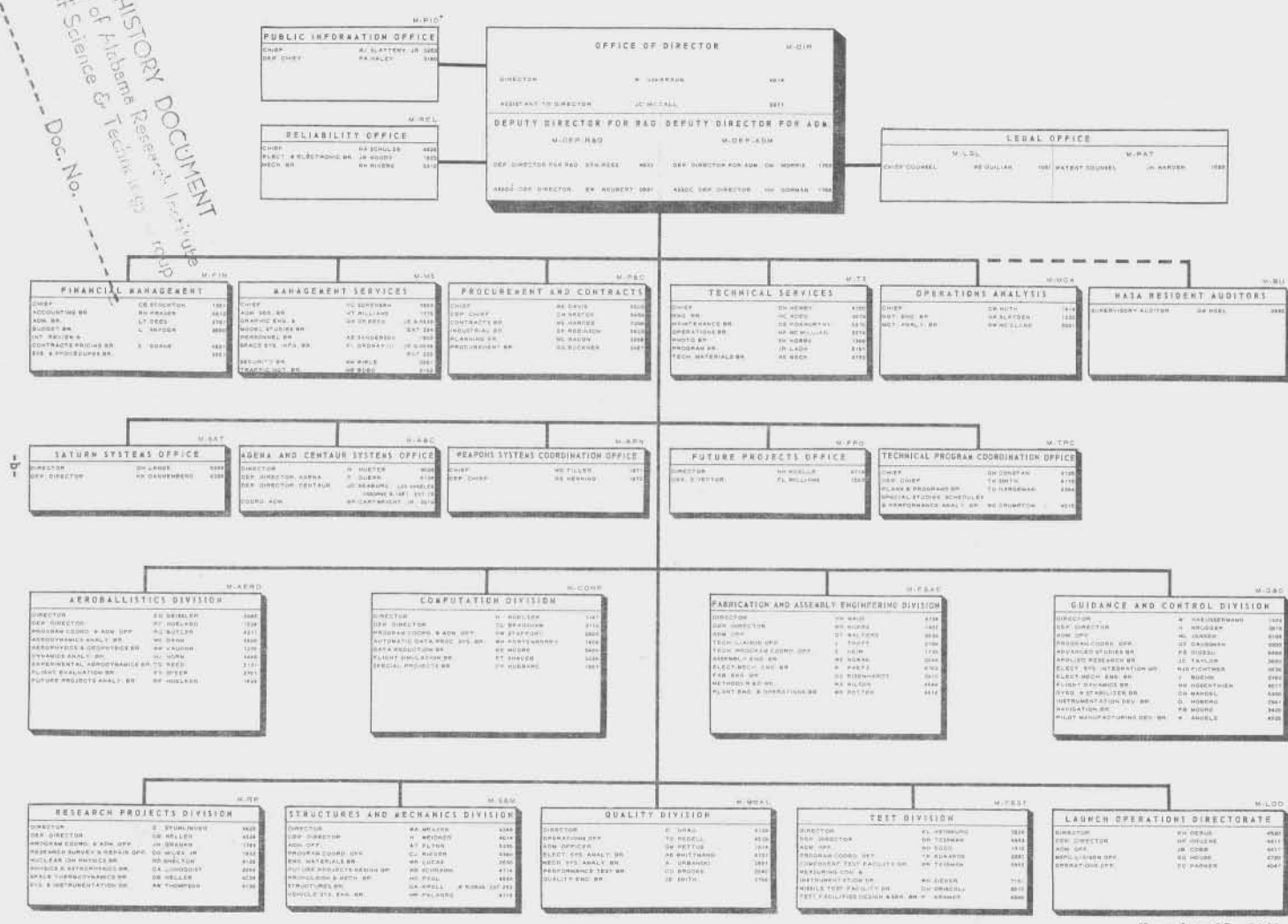
CHART 2

SATURN HISTORY DOCUMENT
 University of Alabama
 Institute of Space and Astronautics
 Date _____ Doc No. _____

GEORGE C MARSHALL SPACE FLIGHT CENTER

HUNTSVILLE, ALABAMA

SATURN HISTORY DOCUMENT
 University of Alabama Research Institute
 History of Science & Technical Institute
 Date: _____ Doc. No. _____



November 28, 1960

28 November 1960

XIII

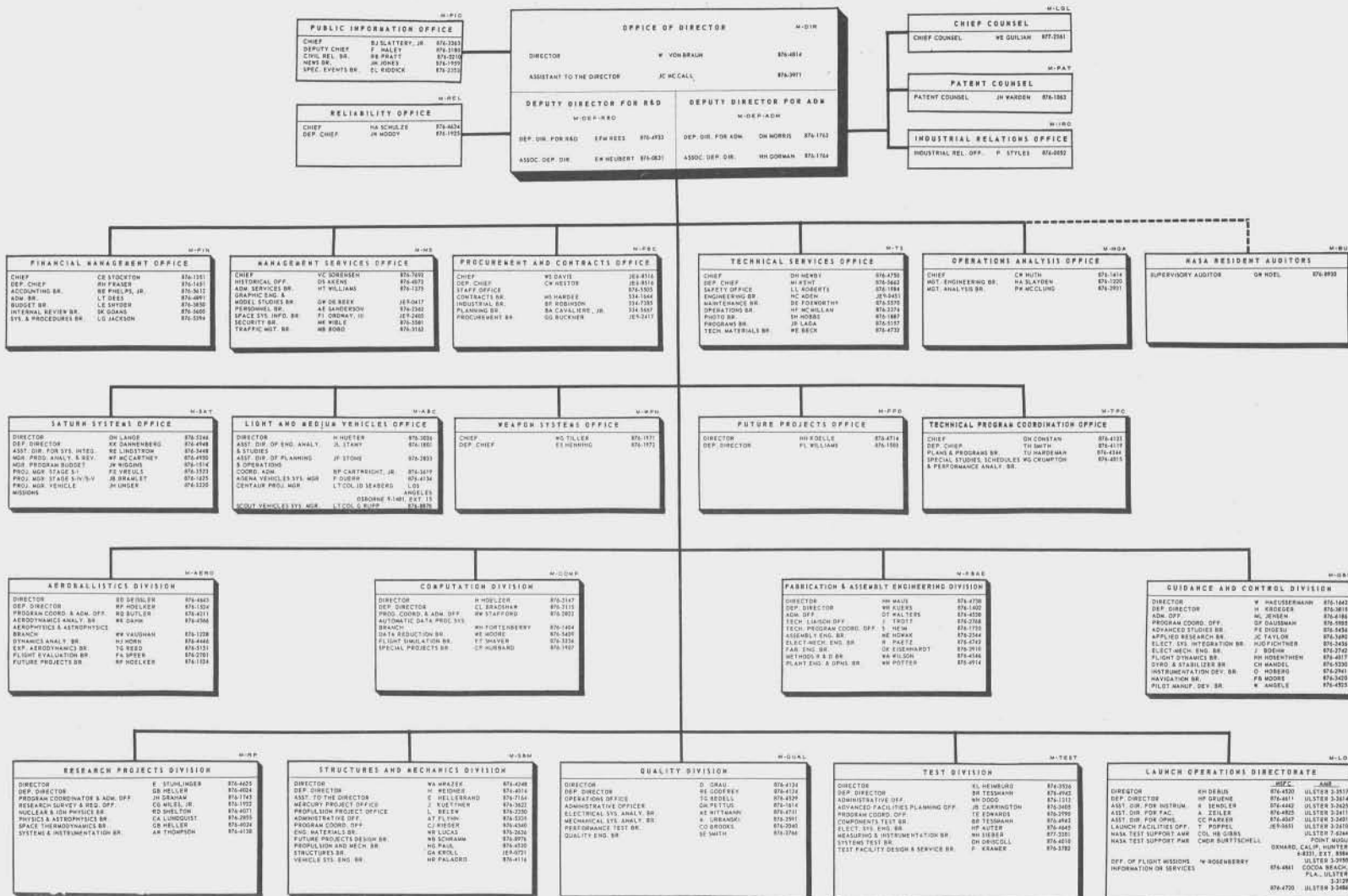
MSFC DIRECTORY CHART

GEORGE C MARSHALL SPACE FLIGHT CENTER

HUNTSVILLE, ALABAMA

DIRECTORY CHART, April 19, 1961
Form No. 1 - ADMINISTRATIVE SERVICES BRANCH
7-1-61

XX



25 April 1961

and support of other programs, these two areas have not been given individual chapters in this report; instead, they are included in various chapters. Three other programs (Jupiter, Pershing, and Redstone) are in support of the Army,¹³ and they will not be discussed in chapter form. There are chapters for the five remaining programs: Mercury-Redstone, Juno II, Saturn, Agena B, and Centaur. Our organizational chart on the previous page should clarify the official areas of responsibility throughout the above programs.¹⁴

The amount of money expended by MSFC during this period again reveals the size of the Center's activity. During the first six months of Calendar Year 1961, MSFC disbursed \$177,081,173. Of this sum \$143,592,753 was spent on research and development; \$30,472,420 was spent for salaries and expenses; and \$3,016,000 for construction of facilities.¹⁵

13. For a review of the operating agreement between MSFC and the U. S. Army Ordnance Missile Command (AOMC), as revised February 14, 1961, see Vol. II: Supporting Documents.

14. A description of MSFC administrative functions is in Vol. II: Supporting Documents.

15. Interview with C. Rush Byerline and R. H. Fraser, MSFC FMO, Sept. 19, 1961.

GEORGE C MARSHALL SPACE FLIGHT CENTER

HUNTSVILLE, ALABAMA

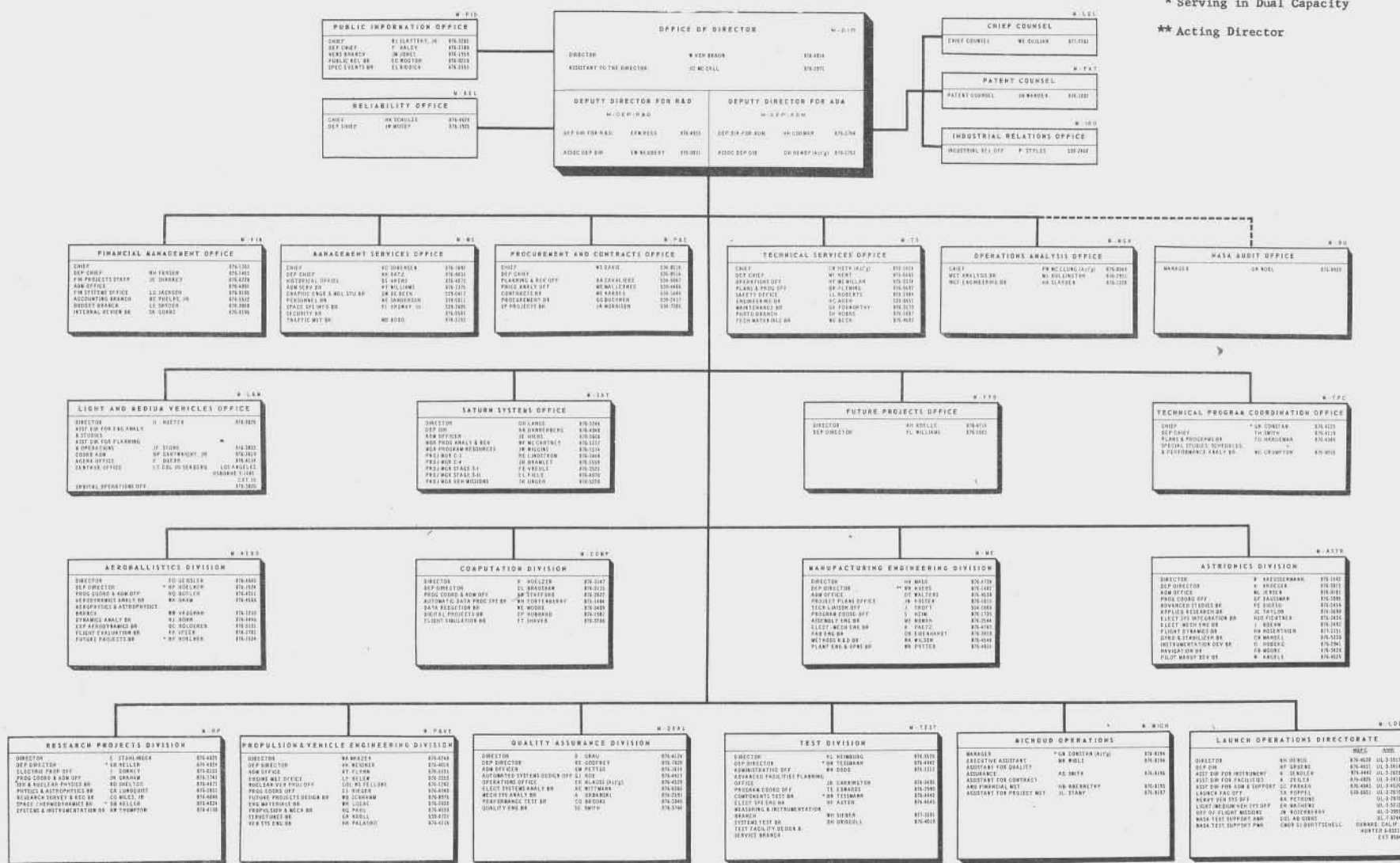
DIRECTORY CHART December 28, 1961

Prepared By Administrative Services Branch

Tel. 876-1153

* Serving in Dual Capacity

** Acting Director

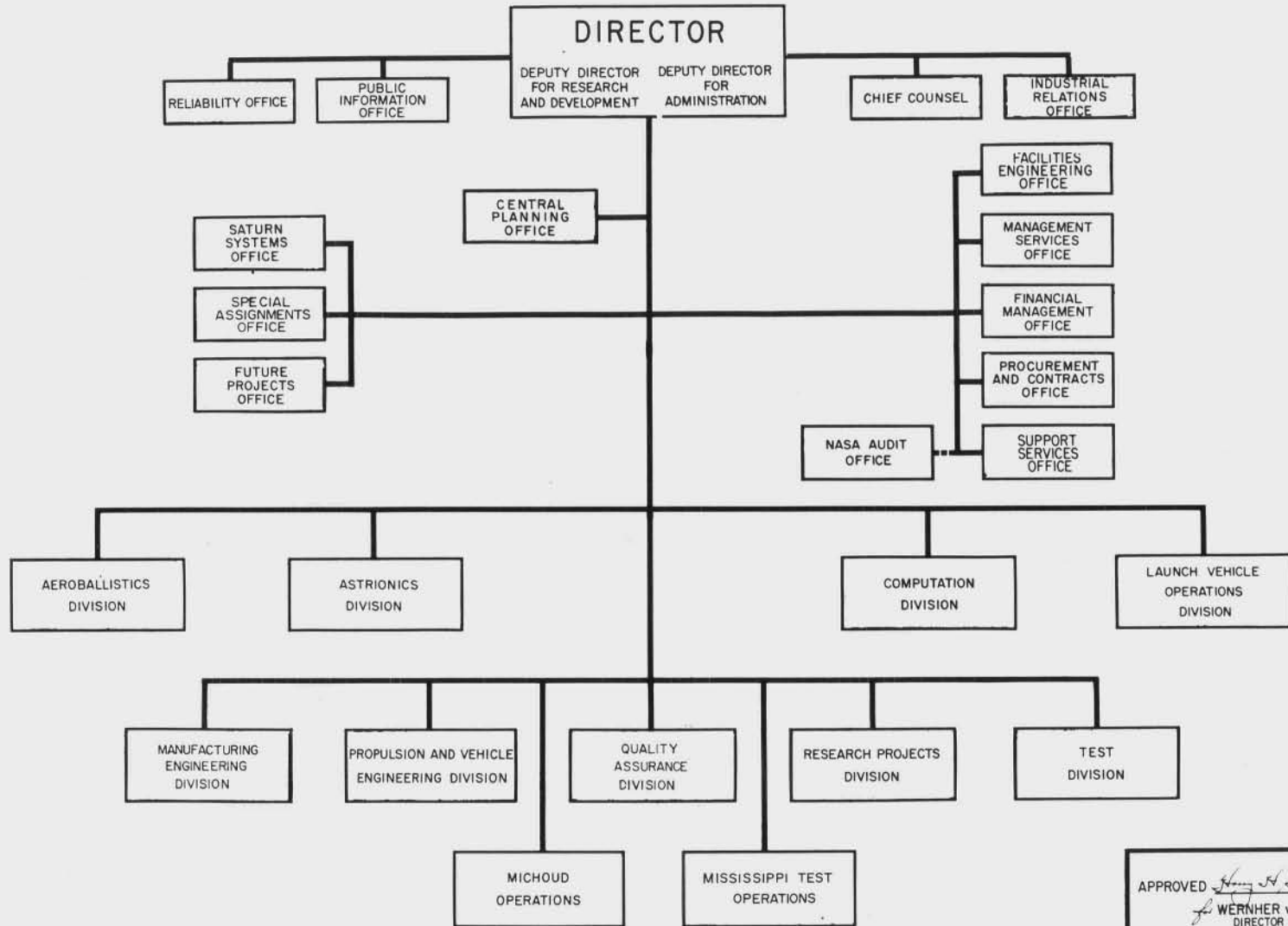


Scout, Delta, Juno II, and Apollo, comprising the other 2.4 per cent of the Center's R&D activity.

The amount of money expended by MSFC during this period again reveals the size of the Center's activity. During the second six months of Calendar Year 1961, MSFC committed \$362,277,994. Of this sum \$282,354,294 was committed on research and development; \$31,634,000 was spent for salaries and expenses; and \$48,289,700 for construction of facilities.⁶

6. Interview with Tom Durham, Plans & Programs Br., TPC Off., MSFC, Jan. 15, 1962.

GEORGE C. MARSHALL SPACE FLIGHT CENTER

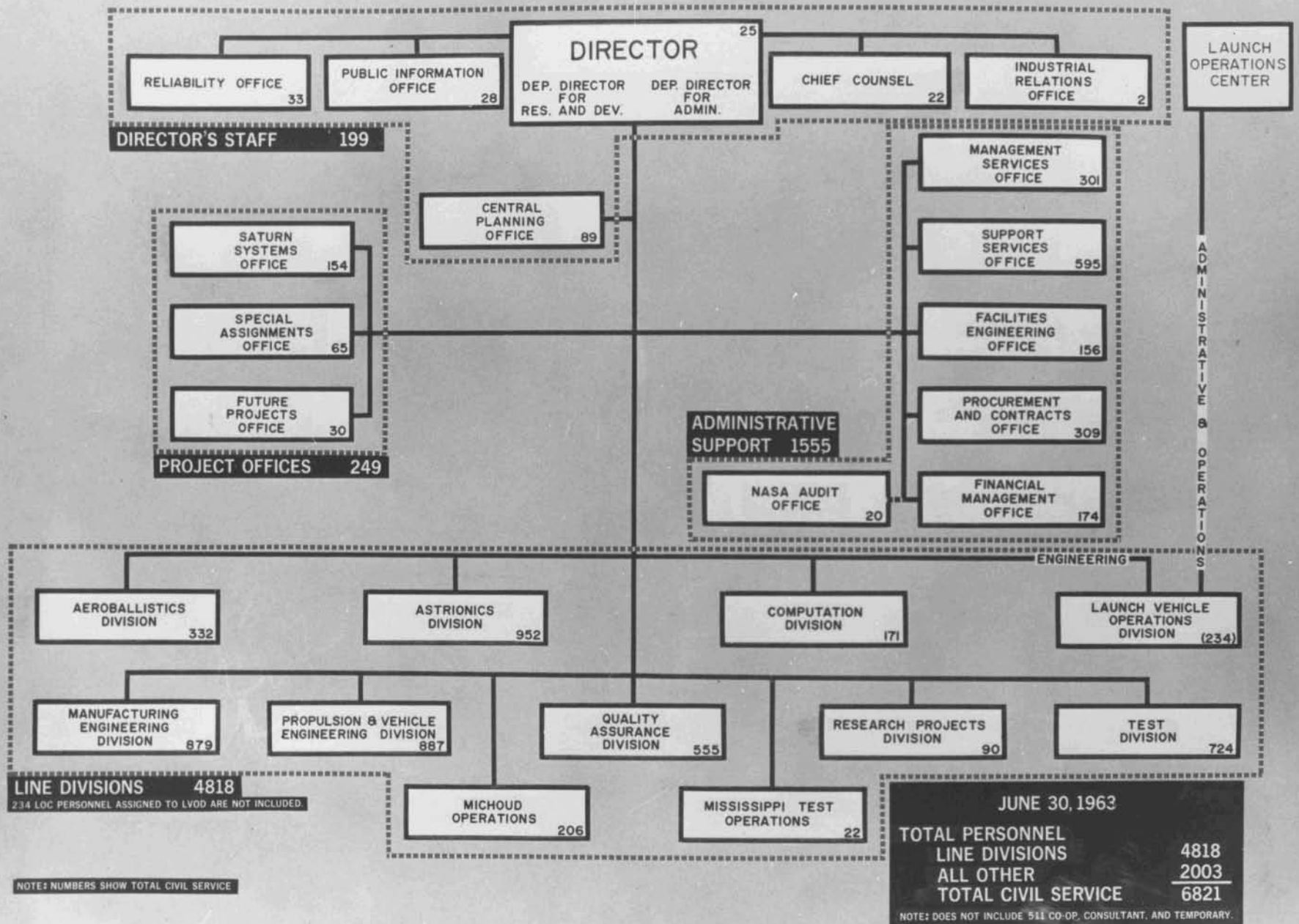


APPROVED *Wernher von Braun*
 WERNHER von BRAUN
 DIRECTOR MSFC
 DATE *January 10, 1963*

Ch. 42 MAR 20 1963

10 January 1963

GEORGE C. MARSHALL SPACE FLIGHT CENTER



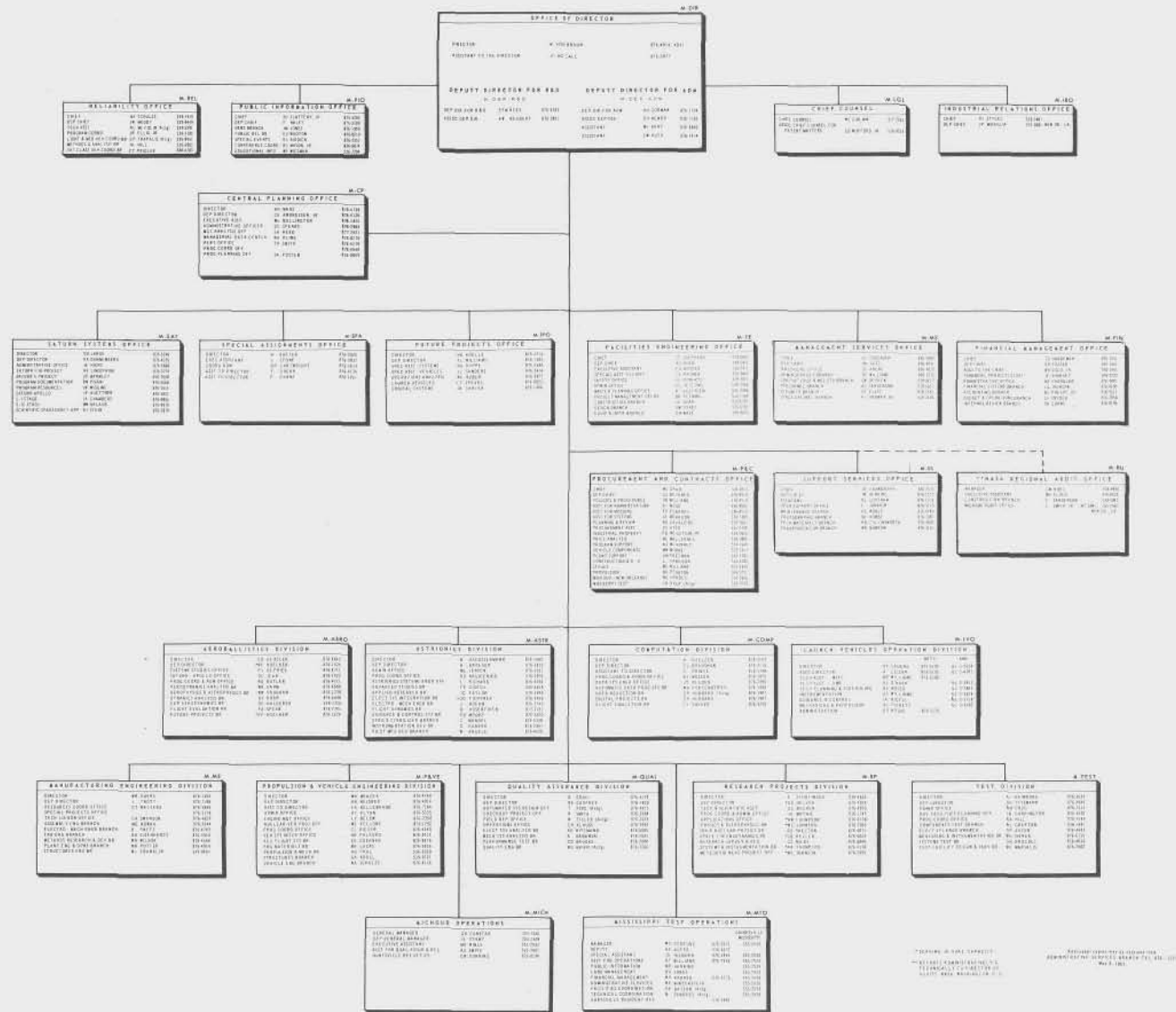
M-CP-D, JUNE 30, 1963, M-CP-D 805E

30 June 1963

DIRECTORY CHART

GEORGE C. MARSHALL SPACE FLIGHT CENTER

HUNTSVILLE, ALABAMA



8 May 1963

engineering building at Michoud. Scheduled for completion in the latter half of 1964, the building will house engineering and administrative personnel.

At the Mississippi Test Operations (MTO) in Hancock County, Mississippi, MSFC began design and construction of four major support facilities and awarded two major utility design contracts during this six-month period. The Center also began work on the waterways system at MTO during May by awarding two contracts, one for dredging of a harbor and the other for construction of a dock and access road.¹⁶ When completed, the waterways system will be used for transportation of the stages and engines to be static fired at MTO.

Management and Administration

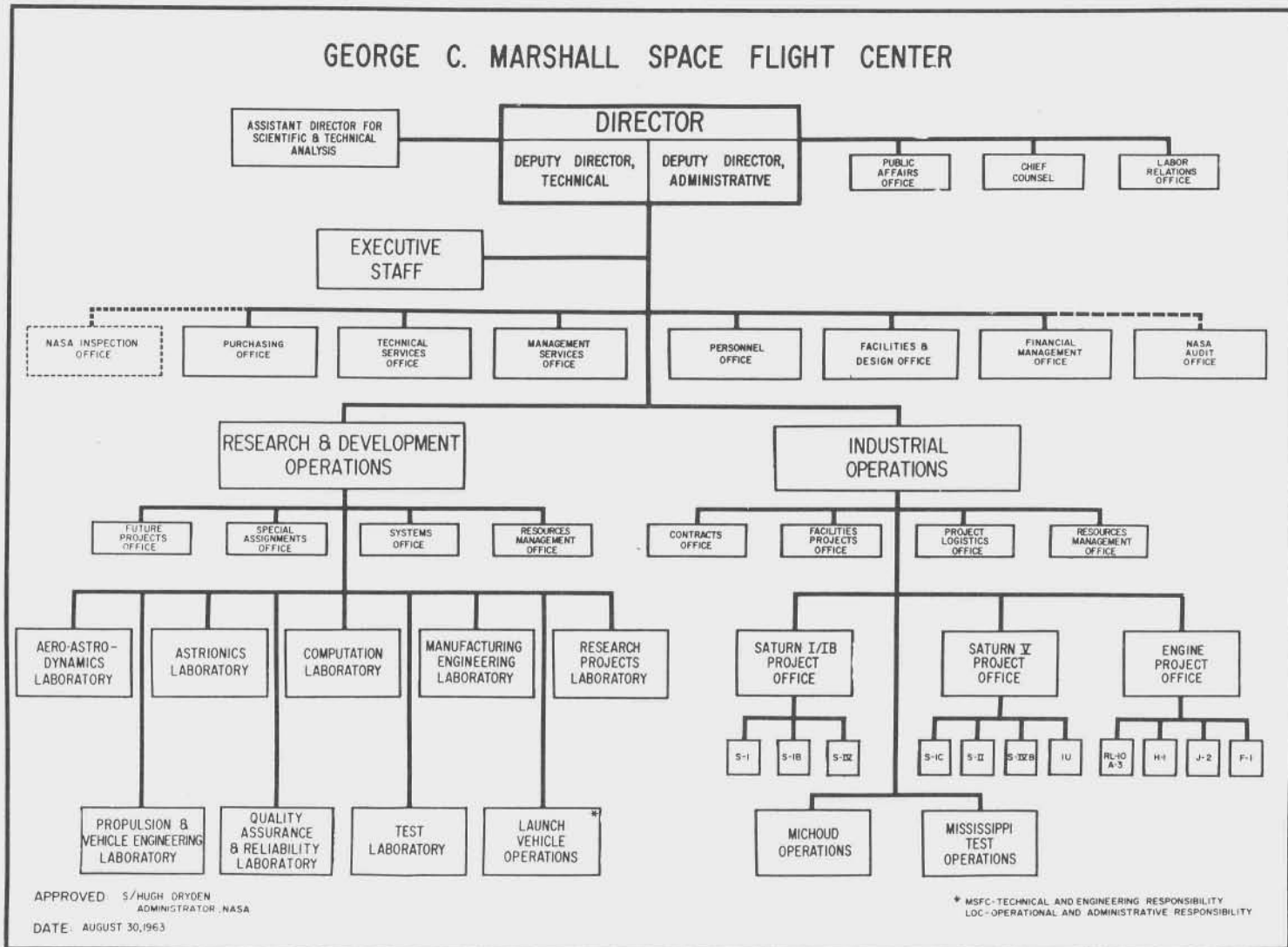
Late in 1962 MSFC discontinued the Light and Medium Vehicles Office and began the establishment of the MSFC Special Assignments Office in its place. MSFC issued a charter on January 3, 1963, giving the Special Assignments Office responsibility for concluding the transfer of the Centaur and Agena vehicle systems management to LeRC and for conducting studies, program planning, and management planning in connection with a proposed lunar logistics vehicle program.¹⁷

A new organizational structure for the NASA Launch Operations Center (LOC) at Cape Canaveral, Florida, changed the status of MSFC's Launch

15. MSFC P&C, Contractual Documents Issued, June 1963, p. 10.

16. MSFC Hist. Office, Mississippi Test Operations - Historical Report, January 1 through June 30, 1963, p. 14, in Vol. II, Supporting Documents.

17. MSFC Hist. Office, Hist. of the Geo. C. Marshall Space Flight Center (MHM-6), p. xxvi; and MSFC PIO, Press Release, Jan. 27, 1963.



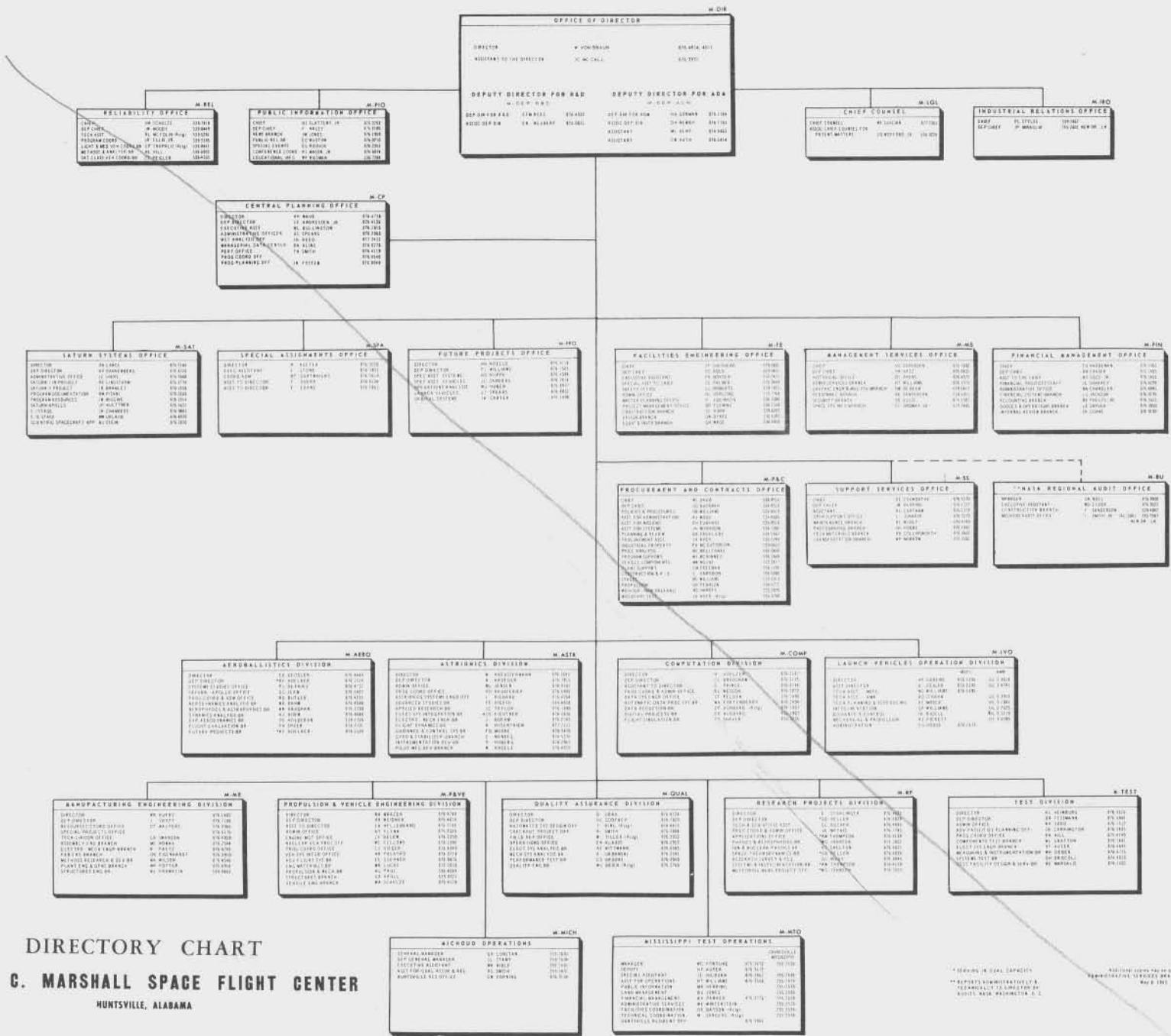
NEW CHART REFLECTS ORGANIZATIONAL CHANGES

This MSFC organizational chart shows the new organization after the over-all reorganization that was effective on August 30, 1963.

DIRECTORY CHART

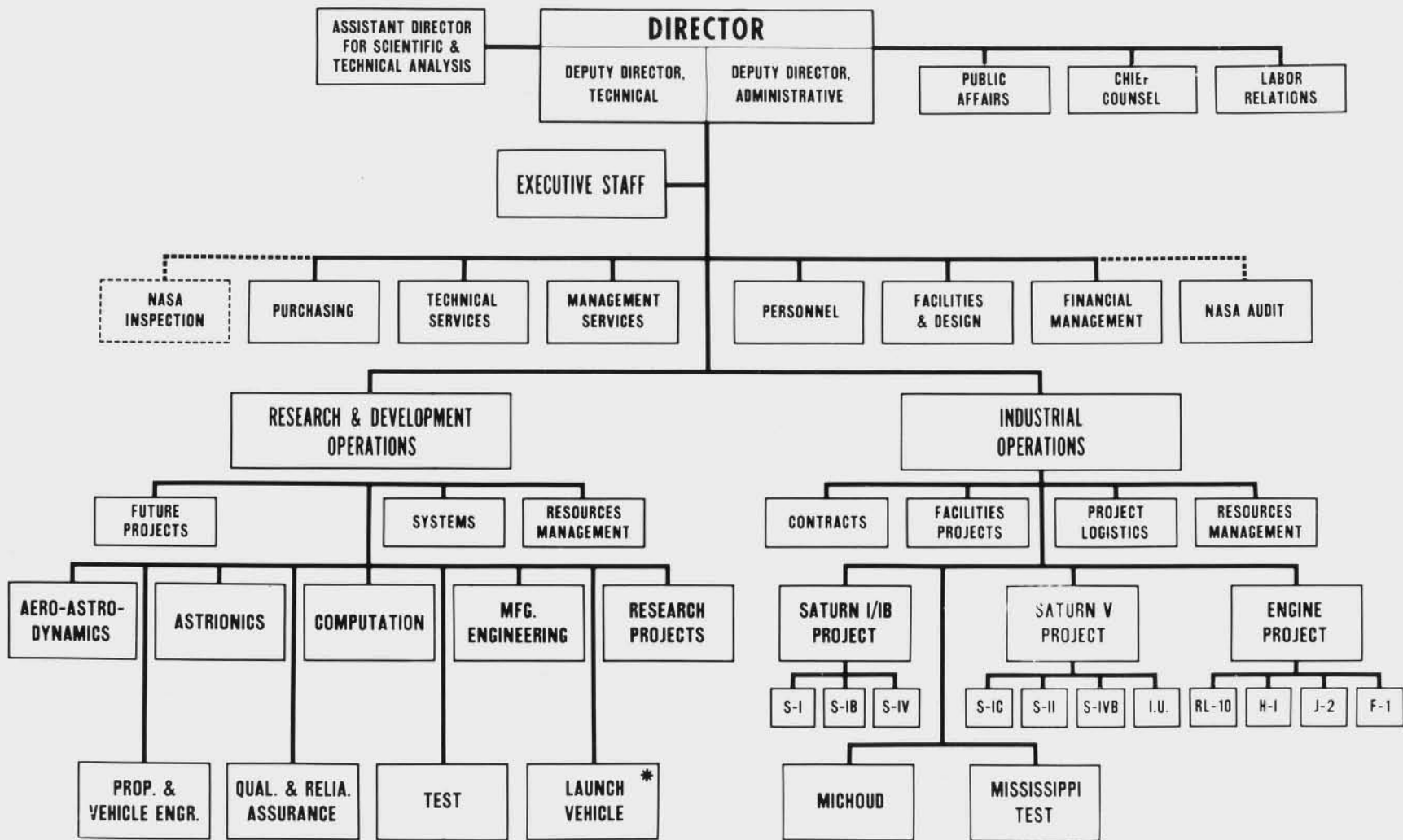
GEORGE C. MARSHALL SPACE FLIGHT CENTER

MUNTSVILLE, ALABAMA



* Figures in italics represent estimated figures.
 ** Figures in parentheses represent estimated figures.
 *** Figures in brackets represent estimated figures.

GEORGE C. MARSHALL SPACE FLIGHT CENTER

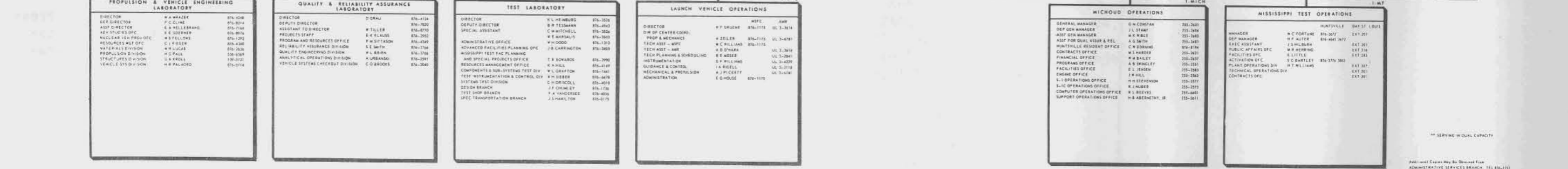
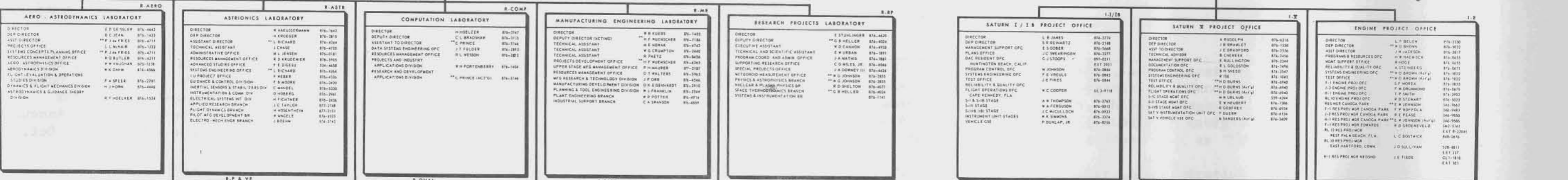
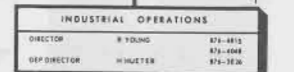
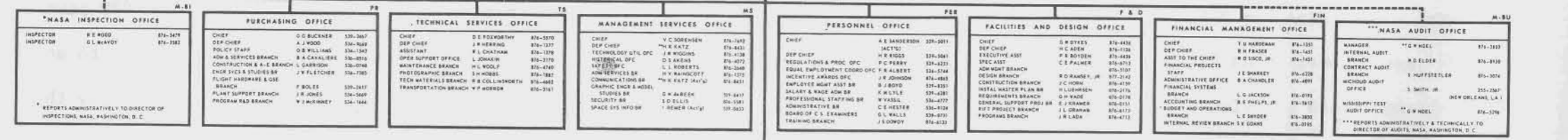
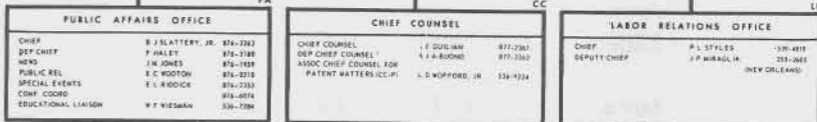
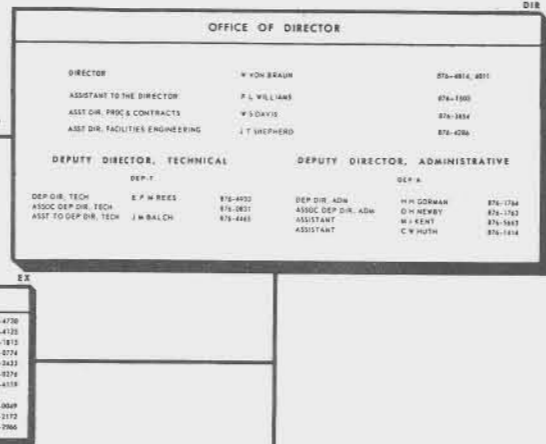


* MSFC-TECHNICAL AND ENGINEERING RESPONSIBILITY
 LOC-OPERATIONAL AND ADMINISTRATIVE RESPONSIBILITY

EX-D OCT. 22, 1963 EX-D 823 D

DIRECTORY CHART
GEORGE C. MARSHALL SPACE FLIGHT CENTER
HUNTSVILLE, ALABAMA

DATE: JANUARY 9, 1964



** SERVING IN DUAL CAPACITY

Administrative Services Branch, TEL 881-133

Quality and Reliability Assurance Laboratory; and all other divisions
 27
 were redesignated laboratories.

After the organizational change, MSFC in October and November
 revised the activity numbering system, completed funds distribution
 according to new codes, and completed all personnel actions resulting
 28
 from the change.

Management Sponsored Activities

In the July - December 1963 period MSFC participated in several
 programs supporting national and MSFC goals to achieve greater effi-
 ciency, reliability, and economy. In mid-July the Center participated
 in a National Civil Defense familiarization evacuation exercise. A
 top priority program begun in August was the manned flight awareness
 program to bring about "super" quality control on the part of Center
 and contractor personnel. In October, November, and December MSFC
 29
 participated in NASA's Cost Reduction and Control Program.

T. OFFICE	
T	010-4738
	010-3821
	010-3618
	010-3347
F	010-5548
AF	010-2855
T. H.	010-3819

27. Harry H. Gorman, Deputy Director, Administrative, MSFC, to All Marshall Employees, memo, subject, "Reorganization Announcement," Oct. 4, 1963. A later memo from V. C. Sorensen, Chief, Management Services Office, MSFC, to All Marshall Employees, subject, "Reorganization Announcement Number 5," numbered the October 4 announcement as "Number 5," Oct. 11 1963.

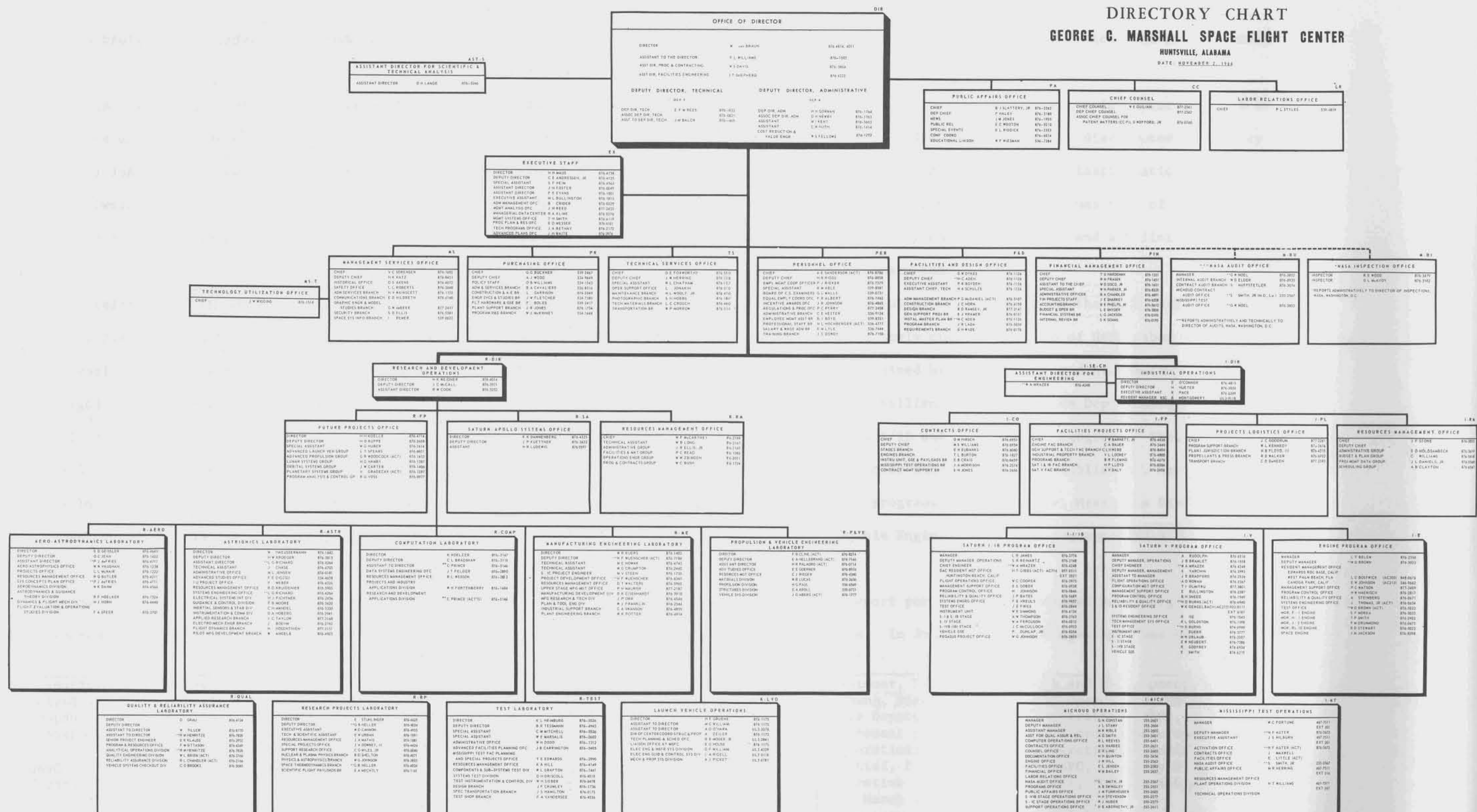
28. Harry H. Gorman, Deputy Director, Administrative, MSFC, "Implementation Schedule No. 2," Sept. 13, 1963.

29. MSFC PAO, Marshall Star, July 24, 1963, pp. 1 and 3; and Press Release, Aug. 27, 1963; and Harry H. Gorman, Deputy Director, Administrative, MSFC, to Distribution, memo, subject, "Economy of MSFC Operations," Oct. 29, 1963.

DIRECTORY CHART

GEORGE C. MARSHALL SPACE FLIGHT CENTER

HUNTSVILLE, ALABAMA
DATE: NOVEMBER 7, 1964



*SERVING IN DUAL CAPACITY

Reprinted Copy May Be Obtained From ADMINISTRATIVE SERVICES BRANCH, TEL 876-1102

obtain a closer relationship between launch vehicle and payload management personnel.

16

A Center-wide job evaluation program began in February. As a first step in the program the MSFC Personnel Office distributed job survey questionnaires to hundreds of Civil Service Classification Act (GS) employees. The goal as the program expanded was that of reviewing all positions and of achieving equity, validity, and simplicity in position classification and salary administration.

17

NASA appointed Paul L. Styles, Chief of the MSFC Industrial Relations Office, to the newly created position of NASA Labor Relations Director. Styles retained his MSFC office and his Huntsville location.

18

On March 11 Dr. William A. Mrazek became Deputy Director, Engineering, for both Saturn I/IB and the Saturn V programs. The effect of this assignment by the Center Director was to establish Dr. Mrazek as Chief Engineer for Saturn programs. Replacing Dr. Mrazek as Director of the Propulsion and Vehicle Engineering Laboratory was Fred B. Cline, named Acting Director.

19

During this report period MSFC established a new organization for employee activities. In June this new employee unit was named Marshall

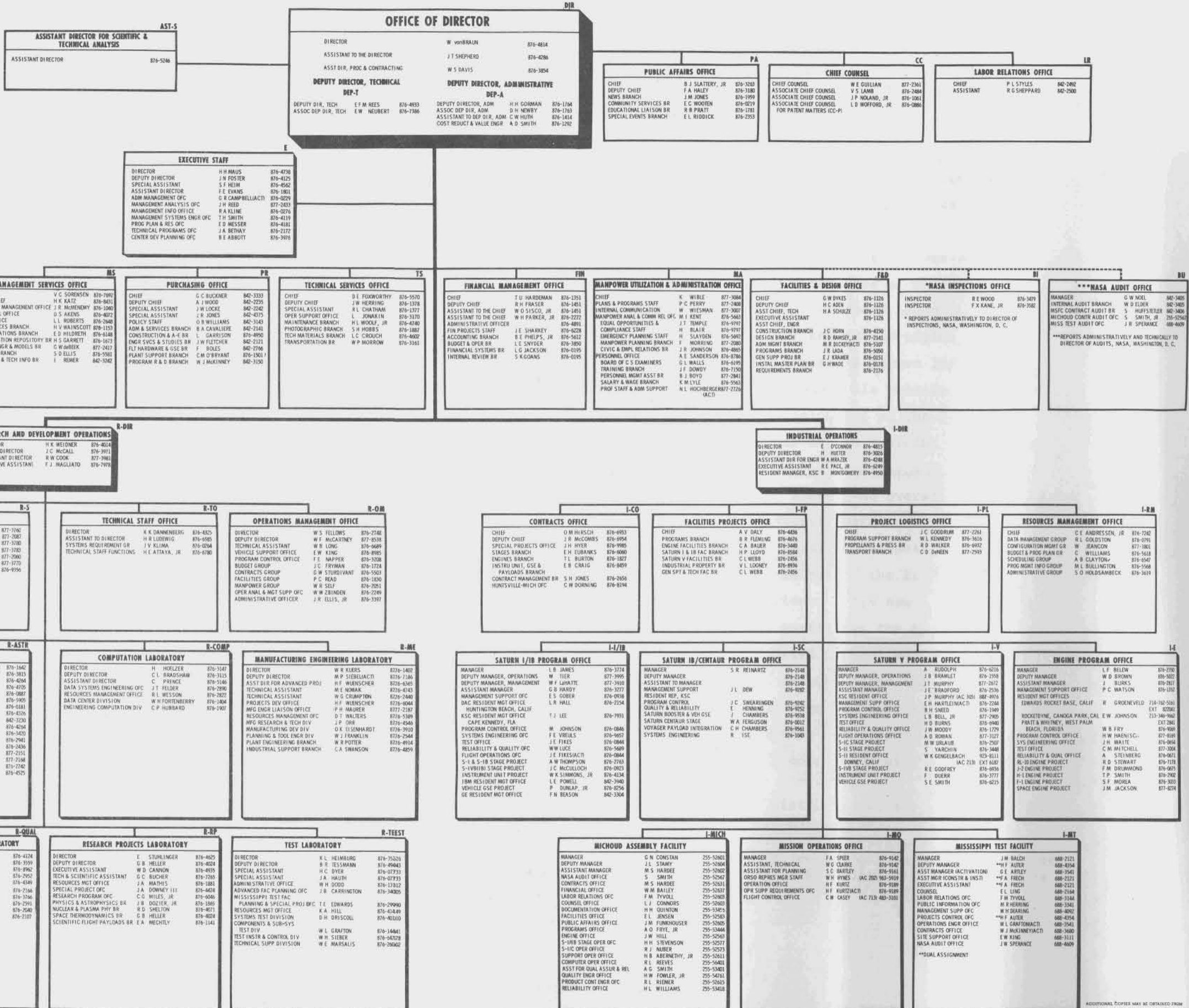
16. H. K. Weidner, Director, Research and Development Operations, MSFC; Robert B. Young, Director, Industrial Operations, MSFC; and David H. Newby, Associate Deputy Director, Administrative, MSFC, memo, subject, "Memorandum of Agreement for Transfer of Meteoroid Measurement Project Office from R&D Operations to Industrial Operations," undated.

17. Acting Chief, Personnel Office, MSFC, to Harry H. Gorman, Deputy Director, Administrative, MSFC, memo, subject, "Weekly Activity Report," Feb. 20, 1964, and March 6, 1964.

18. NASA Management Manual, Chapter 2-1-1.5, Jan. 1, 1964.

19. Dr. Wernher von Braun, Director, MSFC, to Distribution, memo, subject, "Assignments for Saturn Project Management," Mar. 11, 1964.

DIRECTORY CHART
GEORGE C. MARSHALL SPACE FLIGHT CENTER
HUNTSVILLE, ALABAMA
DATE: NOVEMBER 1, 1965



Organizational Changes

With the Saturn I program completed, Saturn IB well into production, and Saturn V in the final design and testing phase, emphasis at MSFC began shifting to future space programs. Claiming most attention was the Apollo Extension Systems program, which later in the year was to be renamed Apollo Applications Program.

In March 1965 NASA named MSFC project manager of the three-stage Saturn IB/Centaur launch vehicle system, which NASA had proposed in December 1964 for use in post-Apollo missions. Foremost among these proposed missions was Voyager, the project for scientific exploration of the planet Mars. In May 1965 MSFC established the Saturn IB/Centaur program office in Industrial Operations, to manage this vehicle program.¹

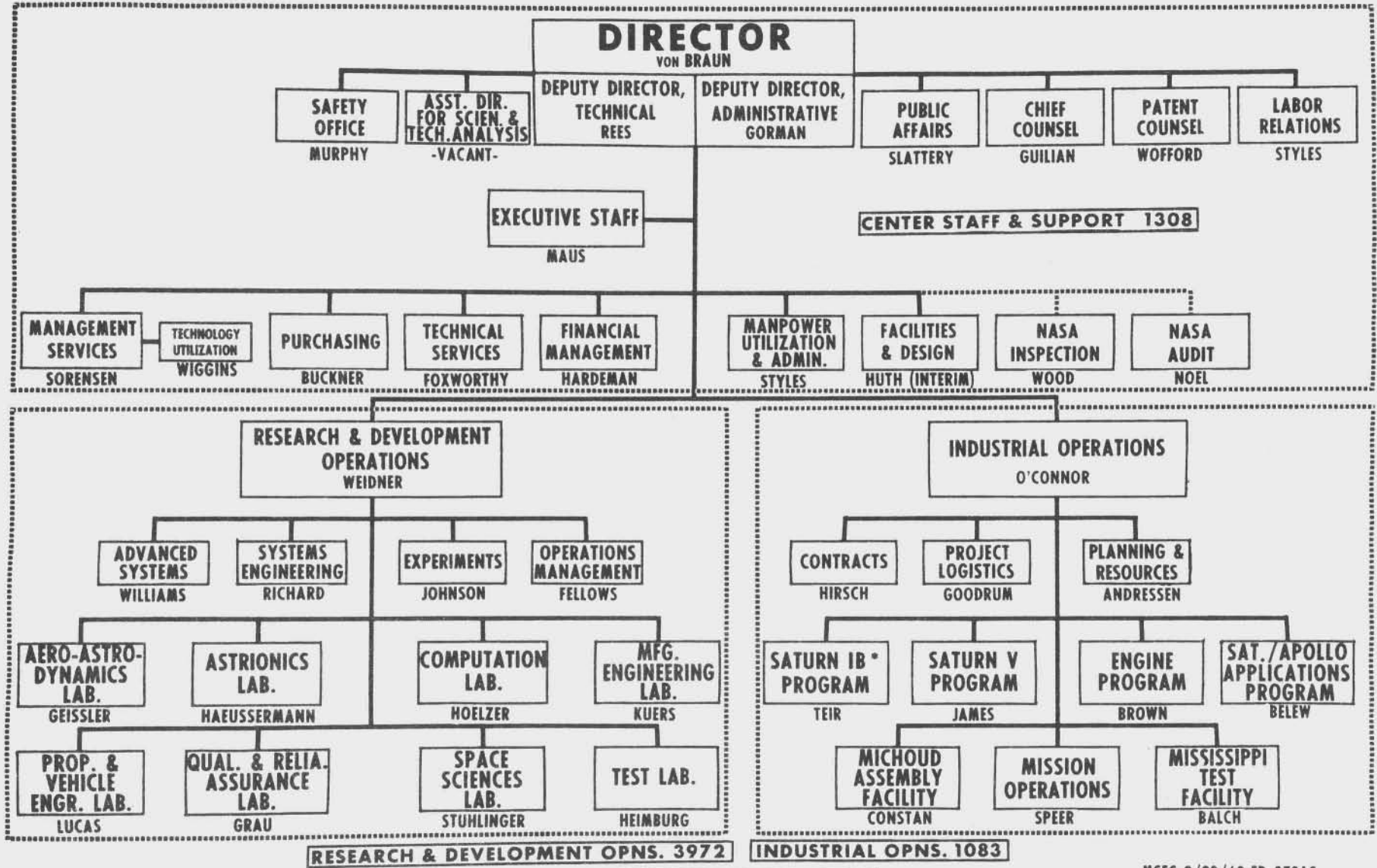
Later in 1965 NASA decided to suspend development of the Saturn IB/Centaur and to use the Saturn V as the Voyager launch vehicle. In October NASA assigned MSFC the Saturn V launch vehicle system responsibility for the Voyager project. The Center on December 1 assigned overall management responsibility for Saturn V/Voyager to Industrial Operations, with technical support from Research and Development (R&D) Operations. On December 17, 1965, the MSFC Director announced creation of the Experiments and Applications Office in Industrial Operations. This new office, to be opened January 1, 1966, would manage MSFC's portion of the Apollo Applications Program, including Voyager and the S-IVB Orbital Workshop.²

During 1965, because of these changing circumstances and new assignments, MSFC transferred numbers of personnel from R&D Operations to program management in Industrial Operations. The Center also transferred large amounts of in-house work to contractors. In connection with these changes,

1. Memo, Office of Director, MSFC, to Distribution, subj., "Saturn IB/Centaur Project and Personnel Announcement," May 7, 1965.

2. Memos, Office of Director to Distribution, subj., "Assignment of Responsibilities for the Saturn V/Voyager Project," Dec. 7, 1965; and Office of Director to Addressees, subj., "Creation of Experiments and Applications Office," Dec. 17, 1965.

GEORGE C. MARSHALL SPACE FLIGHT CENTER



* PENDING NASA HQS. APPROVAL
NOTE: PERMANENT CIVIL SERVICE PERSONNEL ONLY

TOTAL ON-BOARD 6363

MSFC 9/28/68-ED 873AS

**ADMINISTRATION AND TECHNICAL SERVICES
GEORGE C. MARSHALL SPACE FLIGHT CENTER**

SEPTEMBER 2, 1969

OFFICE OF DIRECTOR		
DIRECTOR	D. H. NEWBY	3-1921
ASSISTANT TO DIRECTOR	J. D. FOX	3-1922

A&TS-CR COST REDUCTION OFFICE		
DIRECTOR	H. D. SMITH	3-3150
DEPUTY DIRECTOR	J. E. MILLER	3-3151

A&TS-PAT PATENT COUNSEL		
CHIEF PATENT COUNSEL	L. D. WOFFORD, JR.	3-0020
FIRST ASST PATENT COUNSEL	C. C. WELLS	3-0020
ASSOCIATE PATENT COUNSEL	J. A. BEHMER	3-0022
ASSISTANT PATENT COUNSEL	W. H. RIGGINS	3-0022
ASSISTANT PATENT COUNSEL	G. L. PORTER	3-0022
ASSISTANT PATENT COUNSEL	A. H. FISCHER	3-0022

A&TS-TU TECHNOLOGY UTILIZATION OFFICE		
DIRECTOR	J. W. WIGGINS	3-2224
DEPUTY DIRECTOR	S. B. BOND	3-2225

A&TS-CP CENTER PLANS & RESOURCES OFFICE		
DIRECTOR	J. A. BETHAY	3-0006
ASSISTANT TO DIR	M. LANDAU	3-0006
ASSISTANT TO DIR	S. F. HEIM	3-0006
ADMIN OFFICER	E. S. CAINES	3-0605
MANAGEMENT SYSTEMS	F. M. CROFT	3-0510
BUDGET OPNS	L. E. SNYDER	3-0510
MANAGEMENT STUDIES	R. M. CROUCH	3-0600
GRD DEVELOPMENT	E. L. SCHMIDGEN	3-0603
PLANNING & RESOURCES	K. D. BUTLER	3-1255
ANALYSIS & CONGR. AFFAIRS	J. A. STUCKLER	3-1260

A&TS-FAC FACILITIES OFFICE		
DIRECTOR	C. W. HUTCH	3-1923
RESOURCES STAFF	C. S. LITTLE	3-1360
PLANNING STAFF	J. L. GRAHAM (ACTING)	3-2415
ENGINEERING DIVISION	R. D. RAMSEY, JR.	3-2170
CONSTRUCTION DIVISION	H. P. McELRATH	3-5128

A&TS-FIN FINANCIAL MANAGEMENT OFFICE		
DIRECTOR	T. U. NARDEMAN	3-0189
DEPUTY DIRECTOR	R. H. FRASER	3-0190
INTERNAL REVIEW	S. K. GOANS	3-0193
FINANCIAL SYSTEMS	L. G. JACKSON	3-0195
RESOURCES CONTROL & ANALYSIS	J. R. PALMER	3-0190
ACCOUNTING DIVISION	B. E. PHELPS	3-1489
DEPUTY	W. H. PARKER	3-1489
PLANS & ANALYSIS BRANCH	C. L. TRICK	3-1486
RESOURCES ACCOUNTING & CONTROL BRANCH	N. U. FREEMAN	3-1480
COST & PROPERTY ACCOUNTING BRANCH	L. N. McMILLAN	3-1445
GENERAL ACCOUNTING BRANCH	K. M. SEEVERS	3-1540
PAYROLL ACCOUNTING BRANCH	T. E. SELF	3-1582
COMPUTER OPERATIONS BRANCH	J. R. DREHMUS	3-1490

A&TS-MS MANAGEMENT SERVICES OFFICE		
DIRECTOR	V. C. SORENSON	3-3042
DEPUTY DIRECTOR	H. K. KATZ	3-3093
BUILDING MANAGEMENT	A. L. DEVIS	3-1902
RESOURCES MANAGEMENT STAFF	J. R. McKENNEY	3-3044
HISTORICAL STAFF	D. S. AKEYS	3-1900
SPACE ORIENTATION CENTER	G. B. PITRE	3-0397
DOCUMENTATION DEPOSITORY DIVISION	H. S. CARRETT	3-0840
ADMINISTRATIVE SERVICES DIVISION	H. V. WAINSCOTT	3-1354
MAIL & MESSENGER BRANCH	E. M. COOPER	3-0217
REPRODUCTION BRANCH	C. K. BROWN	3-0270
FORMS & PROCEDURE BRANCH	C. G. BROOKS	3-0897
RECORDS ADMINISTRATION BRANCH	E. THOMAS	3-1357
CUSTODIAN BRANCH	R. E. McCOHD	3-5286
GRAPHIC ENGINEERING & MODELS DIVISION	T. BURE	3-0108
ILLUSTRATION SUPPORT BRANCH	B. D. DEJANWATT	3-0119
GRAPHICS & ANIMATION BRANCH	W. A. KHANDLER	3-0109
MODEL DEVELOPMENT BRANCH	W. D. RIVES	3-0117
SECURITY DIVISION	S. O. ELIS	3-0112
SECURITY OPERATIONS BRANCH	R. H. LARBE	3-4474
SECURITY SECURITY BRANCH	J. K. LEVIE	3-5276
COMMUNICATIONS DIVISION	E. D. HILDBRETH	3-3420
PLANNING & DEVELOPING BRANCH	H. LITTLE	3-3456
OPERATIONS BRANCH	J. S. McBRIDE	3-3450
BUDGET & PROGRAM BRANCH	C. H. BRYANT	3-3460
SCIENTIFIC & TECHNICAL INFO DIVISION	T. BEALE	3-1884
HISTORICAL RECOR. S. BRANCH	W. P. ZIAK	3-2540
LIBRARY SERVICES BRANCH	L. ROBERTSON	3-1180
NEWSLETTER	W. B. BRIDGES, JR.	3-2540

A&TS-MA MANPOWER OFFICE		
DIRECTOR	P. L. STYLES	3-0900
DEPUTY DIRECTOR	A. E. SANDERSON	3-0901
ASST MANPOWER OFFICER	R. G. SHEPPARD	3-0900
ASST PERSONNEL OFFICER	H. R. RIGGS	3-0900
STAFF		
EXECUTIVE POSITION ADMINISTRATION	M. VINSON	3-0190
SUPPORT CONTRACTOR ANALYSIS	G. W. WOLFE	3-0909
EMERGENCY PLANNING	H. A. SLAYDEN	3-0807
LABOR RELATIONS	H. J. GOUGH	3-0904
INTERNAL COMMUNICATIONS	W. F. WIESJAW	3-0908
COMMUNITY RELATIONS	J. R. JOHNSON	3-5403
CAREER DEVELOPMENT	A. W. THOMPSON	3-0963
PLANS PROGRAMS & ADMINISTRATION	P. C. PERRY	3-0952
TRAINING	J. F. DOWDY	3-0951
PROFESSIONAL STAFFING	N. L. HOCHBERGER	3-0951
MANPOWER ANALYSIS	K. M. LYKE	3-0952
PERSONNEL MGMT ASSISTANCE DIVISION "A"	R. M. ABLE	3-5400
PERSONNEL MGMT ASSISTANCE DIVISION "B"	B. J. BOYD	3-5386

A&TS-PR PURCHASING OFFICE		
DIRECTOR	G. A. BUCKNER	3-3334
DEPUTY DIRECTOR	A. J. WOOD	3-2671
SPECIAL ASSISTANT	O. B. WILLIAMS	3-2673
CONTRACTS COMPLIANCE STAFF	H. W. BIAH	3-2674
OPERATIONS SUPPORT DIVISION	B. A. CAVALIERE	3-2675
SMALL BUSINESS & INDUSTRIAL		
RESOURCES STAFF	E. J. HAVRILLA	3-2745
PRICE ANALYSIS BRANCH	L. M. FREEMAN	3-2714
MANAGEMENT AND REVIEW BRANCH	L. A. LIVERY	3-2742
CONTRACT MANAGEMENT DIVISION	W. J. McKINNEY	3-0770
AREA "A" BRANCH	P. H. TAYLOR	3-0820
AREA "B" BRANCH	C. C. CHANDLER	3-2783
R & D AND STUDIES DIVISION	L. GARRISON	3-2789
RESEARCH AND DEVELOPMENT BRANCH	R. W. STANKLE	3-2860
STUDIES BRANCH	W. J. MILLER	3-2795
FABRICATION BRANCH	G. D. RIDGENAY	3-0599
INT. HOWR & PLANT SUPPORT DIV.	J. W. FLETCHER	3-0221
ELECTRICAL & USE BRANCH	J. H. COSSER	3-0320
SUPPLIES & EQUIPMENT BRANCH	E. M. HARPER	3-0225
HARDWARE & MATERIALS BRANCH	H. M. McCULLOUGH	3-0544
ENGINEERING & SUPPORT SERVICES DIV.	D. CRIDER	3-2605
ENGINEERING SERVICES BRANCH	C. E. HENK	3-2605
SUPPORT SERVICES BRANCH	B. W. RIDGEWAY	3-2836

A&TS-TS TECHNICAL SERVICES OFFICE		
DIRECTOR	D. L. FOXWORTHY	3-0700
DEPUTY DIRECTOR	J. W. HERRING	3-0701
SPECIAL ASSISTANT	R. L. CHATHAM	3-0701
OPERATIONS SUPPORT STAFF	L. JORDAN	3-0705
MAINTENANCE DIVISION	R. L. WOOD, JR.	3-0421
DEPUTY	R. B. BOWERS	3-0426
PROJECT CONTROL OFFICE BRANCH	W. F. SOWELL	3-0404
BUILDINGS AND GROUNDS BRANCH	R. C. FRANCIS	3-0400
UTILITIES BRANCH	C. D. CATES	3-0472
METHEOLOGICAL BRANCH	W. G. COBB	3-0425
PHOTOGRAPHIC DIVISION	S. H. HOBBS	3-2531
DEPUTY	C. S. JELLEN	3-2531
LABORATORY BRANCH	E. H. BAXON	3-2534
PRODUCTION BRANCH	H. B. McFARLIGHT	3-2535
CAMERA BRANCH	J. D. EVANS	3-2532
TECHNICAL MATERIALS DIVISION	L. C. CROUCH	3-0254
PLANS OFFICE	M. G. COOLEY	3-0904
RENTAL BRANCH & UTIL. BRANCH	H. E. GILCE	3-2228
STORAGE BRANCH	J. G. SIDICK	3-0906
CENTER PROPERTY BRANCH	G. D. SWITZER	3-0908
SUPPLY MANAGEMENT BRANCH	J. D. DYAR, JR.	3-0905
TRANSPORTATION DIVISION	W. P. MORROW	3-0716
DEPUTY	M. B. BOBB	3-0717
TRAVEL BRANCH	N. L. PERRY	3-0713
TRAFFIC MANAGEMENT BRANCH	V. D. SAGIT	3-0713
VEHICLE OPERATIONS BRANCH	R. G. HELLER	3-0725
AIR OPERATIONS BRANCH	W. K. MARTIN	3-0725