

X.3.

1965

CONFIGURATION MANAGEMENT-DEFINITION

A SYSTEMATIC APPROACH TO THE IDENTIFICATION, CONTROL AND ACCOUNTING OF THE CONFIGURATION OF PRODUCTS, AND THEIR COMPONENT PARTS, FROM THE POINT OF THEIR INITIAL DEFINITION THROUGHOUT THEIR INTENDED LIFE.

SATURN HISTORY DOCUMENT
University of Alabama Research Institute
History of Science & Technology Group
Date ----- Doc. No. -----

CONFIGURATION MANAGEMENT – REQUIREMENTS

THE REQUIREMENTS FOR CONFIGURATION MANAGEMENT ARE BASIC FOR ALL PROGRAMS, BUT MUST BE ADJUSTED TO MEET THE CONTRACTUAL OBLIGATIONS OF ANY ONE PROGRAM

MARTIN 

CONFIGURATION MANAGEMENT – ORGANIZATION

- MUST HAVE SUPPORT OF TOP MANAGEMENT TO OPERATE EFFECTIVELY
- MUST BE USED AS AN INTEGRATED WORKING TOOL, NOT JUST A STATUS REPORTING SYSTEM



CONFIGURATION MANAGEMENT POLICY AND PROCEDURE DOCUMENTS REVISIONS

Proposed DoD Documents	Documents That Will Be Revised		
	Army	Navy	Air Force
DoD Directive and Instruction on Configuration Management	AMC 11-26 on Configuration Management AMCR 715-29 on Control of Engrg Chgs-Fixed Price Contracting	15 Issued Documents (list attached) Proposed NAVMATINST 4000. on Configuration Management (Feb 67)	AFR 65-3 on Configuration Management AFR 57-4A on Modification/Modernization AFSC Manual 375-1 on Configuration Management

CONFIGURATION MANAGEMENT CONTRACTUAL DOCUMENT CONSOLIDATION

*Proposed DoD Documents	Documents That Will Be Superseded (See listing attached for titles)			
	Army	Navy	Air Force	Other
Configuration Control MIL-STD-(4)80 481	Appendix V of AMCR 11-26	ANA Bulletin 445 BuWeps Sup 1 ANA 445 BuWeps Sup 2 ANA 445 7 Forms on Changes (list attached) Sec V of NAVMATINST 4000. (Draft)	ANA Bulletin 445 Exhibits VIII and IX of AFSCM 375-1	ANA Bulletin 445
Configuration Identification MIL-STD-1 Specification Acquisition MIL-S-(83)490 Specification Practices MIL-STD-(4)90	----- Appendix II and III of AMCR 11-26	Section IV (will revise) of NAVMATINST 4000. (Draft) ----- Section IV exhibits 1 thru 10 of NAVMATINST 4000.(Draft) 7 Insts. on Spec. Preparation (list attached)	Exhibits X and XI of AFSCM 375-1 ----- Exhibits I thru VII of AFSCM 375-1	Chapter V of M-200F
Configuration Status Accounting MIL-STD-(4)82	Appendix VI Data Elements of AMCR 11-26	Section VI Data Elements of NAVMATINST 4000. (Draft)	Exhibits XV thru XVII of AFSCM 375-1	

* Requirements documents stipulated in proposed DoD Instruction on Configuration Management, dated 14 Mar 67

CONTRACTUAL DOCUMENTS TO BE REVISED BY ISSUANCE OF SPECIFICATION PRACTICES MIL-STD-(4)90

38 basic documents used for preparation of specifications - see listing attached.

attach #1

Policy and Procedure
Service Documents To Be Revised By Issuance
of DoD Directive and Instruction on
Configuration Management

Army

AMCR 11-26	Configuration Management
AMCR 715-29	Control of Engineering Changes under Competitively Obtained Fixed-Price Supply Contracting

Navy

BuWeps Inst 5200.20	Weapon System Configuration Control Manual
BuWeps Inst 5200.10A CP-3	Weapon System Changes; Policy, Organization, Responsibilities and Procedures for
BuWeps Inst 4275.2A	ANA Bulletin 445 and BuWeps Supplement #1
BuWeps Inst 5200.14B	Surface Missile Systems Engineering Change Procedures
BuWeps Inst 4760.25	Shipbuilding Materiel Management Systems
BuWeps Inst 4340.2B	Aircraft Master Configuration Lists
BuWeps Inst 4440.9A	Backfitting and Moderization of Weapon System Materiel
BuWeps SMS Inst 5200.6A	Surface Missile Systems Class I and Class II Design Change Control; Bu Weps Procedures & Responsibilities for
Bu Weps Inst 4121.2	Specifications Under the Cognizance of the Bureau of Naval Weapons (XWS, WS, and MLL-(Wep)); policies, responsibilities, and procedures for preparation and processing of
NAVORD OSTD 65	Ordnance Alterations and Modifications, Preparation and Issuance of
Bu Ships Inst 4720.1	Alterations to Naval Vessels
Bu Ships Inst 4760.21C	Issuance of Changes Effecting Ship Construction and Conversion Funds

Bu Ships Document
DS&FM Manual 4760.3

Ship Building and Conversion Contract
Modification

ASWSPO Inst A5102A

Configuration Control of Torpedo MARK 46

SPINST P4720.1B

SPALTS Policies and Procedures for Alterations
of FBM Weapon Systems Equipment

NAVMATINST 4000. (Draft)

Configuration Management

Air Force

AFR 65-3

Configuration Management

AFR 57-4A

Modification/Modernization of Systems and
Equipment

AFSCM 375-1

Configuration Management

AFSCR 57-2/AFLCR 57-24

Operational Requirements - Configuration
Management During Acquisition Phase

Contractual Application Documents
To Be Superseded By DoD
Configuration Management Standards
and Specification

Army

Appendix V of AMCR 11-26	Configuration Control - Engineering Changes and Waivers (includes AMC Form 1370, 1370a, 1370b and 1371)
Appendix II of AMCR 11-26	Instruction For Preparation of The System Description
Appendix III of AMCR 11-26	Instruction For Preparation of the Development Description for Equipment Items or Major Components, Minor Items, Critical Components, Facilities and Inventory Items
Appendix VI of AMCR 11-26	Configuration Status Reporting

Navy

Section V of NAVMATINST 4000. (Draft)	Configuration Control (includes Figures (forms) 5-1 thru 5-5)
NAVORD Form 1995	Revision Proposal
NAVORD Form 1902	Revision Directive
NAVORD Form 1071	Revision Directive
NAVORD Form 1062	Notice of Change
SP Form 2013/4720-1	SPALT Proposal
MARK 46 Torpedo ECP Form	Engineering Change Proposal
Modified ANA Bulletin 445 Form for FDL	Engineering Change Proposal
Section IV of NAVMATINST 4000. (Draft)	Configuration Identification
Exhibit 1	System Specification
Exhibit 2	Prime Equipment or Critical Item - Part I - Development Requirements
Exhibit 3	Prime Equipment or Critical Item - Part II - Production Fabrication Requirements

Exhibit 4	Prime Equipment or Critical Item - Development Specification
Exhibit 5	Prime Equipment or Critical Item - Detail Specification
Exhibit 6	Facility Specification - Part I - Development Requirements
Exhibit 7	Facility Specification - Part II - Construction Requirements
Exhibit 8	Material Specification
Exhibit 9	Process Specification
Exhibit 10	Interchangeable (includes Common) Item Specification
Section VI of NAVMATINST 4000. (Draft)	Configuration Status Accounting (Data Elements)
AV-2000 (Bu Weps)	Outline for Preparation of Military Specifications for Aircraft Avionic Equipment
AV-3000 (BuWeps)	Outline for Preparation of Amendments for Military Specifications
AV-4000 (Bu Weps)	Outline for Preparation of Military Specifications for Aircraft Avionic Support Equipment
AV-5000 (Bu Weps)	Outline for Preparation of Military Specifications for Aircraft Instrumentation Equipment
XAV-1000 (Bu Weps)	Outline for Preparation of Experimental and Developmental Specifications for Aircraft Avionic Equipment
TECS-PEG-212A (NAVTRADEVCCEN Project Engineering Guide)	General Instructions for the Preparation of Specifications and Study Outlines
TECS-PEG-212.2 (NAVTRADEVCCEN Project Engineering Guide)	Worksheet for Production-type Limited Coordination Military Specifications
<u>Air Force</u>	
AFSM 375-1 Exhibits Exhibit I	Preparation of the System Performance/Design Requirements (General Specification)

Exhibit II	Preparation of Contract End Item Detail Specification (Prime Equipment)
Exhibit III	Preparation of Contract End Item Detail Specification (Facility)
Exhibit IV	Preparation of Contract End Item Detail Specification (Identification Item)
Exhibit V	Preparation of Inventory Equipment Requirement Detail Specifications (Requirement Items)
Exhibit VI	Preparation of Detail Specification (Critical Components and Company Standard Parts)
Exhibit VII	Specification Maintenance
Exhibit VIII	Preparation of System Requirements Changes
Exhibit IX	Preparation of Engineering Change Proposals for Contract End Items
Exhibit X	Standard Configuration Identification Numbers
Exhibit XI	Identification and Acceptance of Equipments, Aerospace Facilities, Technical Orders, Engineering Data, and Contract Documents
Exhibit XV	Configuration Accounting Data Elements and Reports Requirements
Exhibit XVI	Manually Prepared Configuration Management Reports Requirements
Exhibit XVII	Machine Prepared Configuration Management Reports Requirements
<u>Other</u>	
ANA Bulletin 445	Engineering Changes to Weapons, Systems, Equipments, and Facilities
Chapter V of M-200B	Defense Standardization Manual.

Contractual Documents To Be Revised
By Issuance of
Specification Practices MIL-STD-()

MIL-E-5150A(ASG) and Amendment 1	Engines, Rocket, Liquid Propellant, Model Specification for, Outline and Instructions for Preparation of
MIL-E-8220A(ASG)	Engines, Ramjet, Model Specification for, Outline and Instructions for Preparation of
MIL-E-8594(ASG)	Engines, Aircraft, Turbojet, Model Specification for (Outline and Instructions for Preparation)
MIL-S-8709(ASG)	Strainer, Fuel, Model Specification for (Outline and Instructions for Preparation)
MIL-E-25110(SAG)	Engines, Aircraft, Reciprocating, Model Specification for (Outline and Instructions for Preparation)
MIL-STD-832	Preparation of Detail Specifications for Aircraft (Fixed and Rotary Wing)
NAVAIR SD-24J (Vol I)	Design and Construction of Aircraft Weapon Systems - Fixed Wing
NAVAIR SD-24J (Vol II)	Design and Construction of Aircraft Weapon Systems - Rotary Wing
MIL-F-46370(MJ)	General Specification for Fire Control Engineering Services
MIL-E-60106(MJ)	Engineering Services, Calibration Equipment, General Specification for
MIL-F-4960	Flight Control Subsystem, Air Weapons Systems Requirements For Preparation of Specifications for
MIL-E-5008C	Engines, Aircraft, Turbojet, Model Specification for (Outline and Instructions for Preparation)
MIL-S-6252 (USAF)	Specifications, Detail, Fixed Wing Aircraft, Preparation of
MIL-S-6644 (USAF)	Specifications, Equipment, Contractor-Prepared, Instructions for the Preparation of
MIL-D-7603 (USAF)	Drive, Turbine, Air, Aircraft, Accessory, Model Specification for, Outline and Instructions for Preparation of

MIL-C-7992 Compressors, Air, Gas Turbine Type, Model Specification for (Outline and Instructions for Preparation)

MIL-B-8075C Brake Control Systems, Antiskid, Aircraft Wheels, Instructions for Preparation of Specifications for

MIL-C-8216 (USAF) Compressor Unit, Air, Aircraft, Hydraulic Motor Driven, Model Specification for Outline and Instructions for, Preparation of

MIL-E-8220A Engines, Ramjet, Model, Specification for, Outline and Instructions for Preparation of

MIL-E-8594 Engines, Aircraft, Turboprop, Model Specification for (Outline and Instructions for Preparation) (ASG)

MIL-P-9024D Packaging, Air Weapon Systems, Specifications and General Design Requirements for

MIL-E-9363 (USAF) Engines, Aircraft, Pulsejet, Model Specification for Outline and Instructions for Preparation of

MIL-D-9412D (ASG) Data for Aerospace Ground Equipment

MIL-I-9430 Instructions for Preparation of Detail Specification for Rotary Wing Aircraft

MIL-S-25063A (USAF) Specifications and Engineering Data for Airborne Electrical Equipment or Systems, Requirements for Preparation and Submittal of

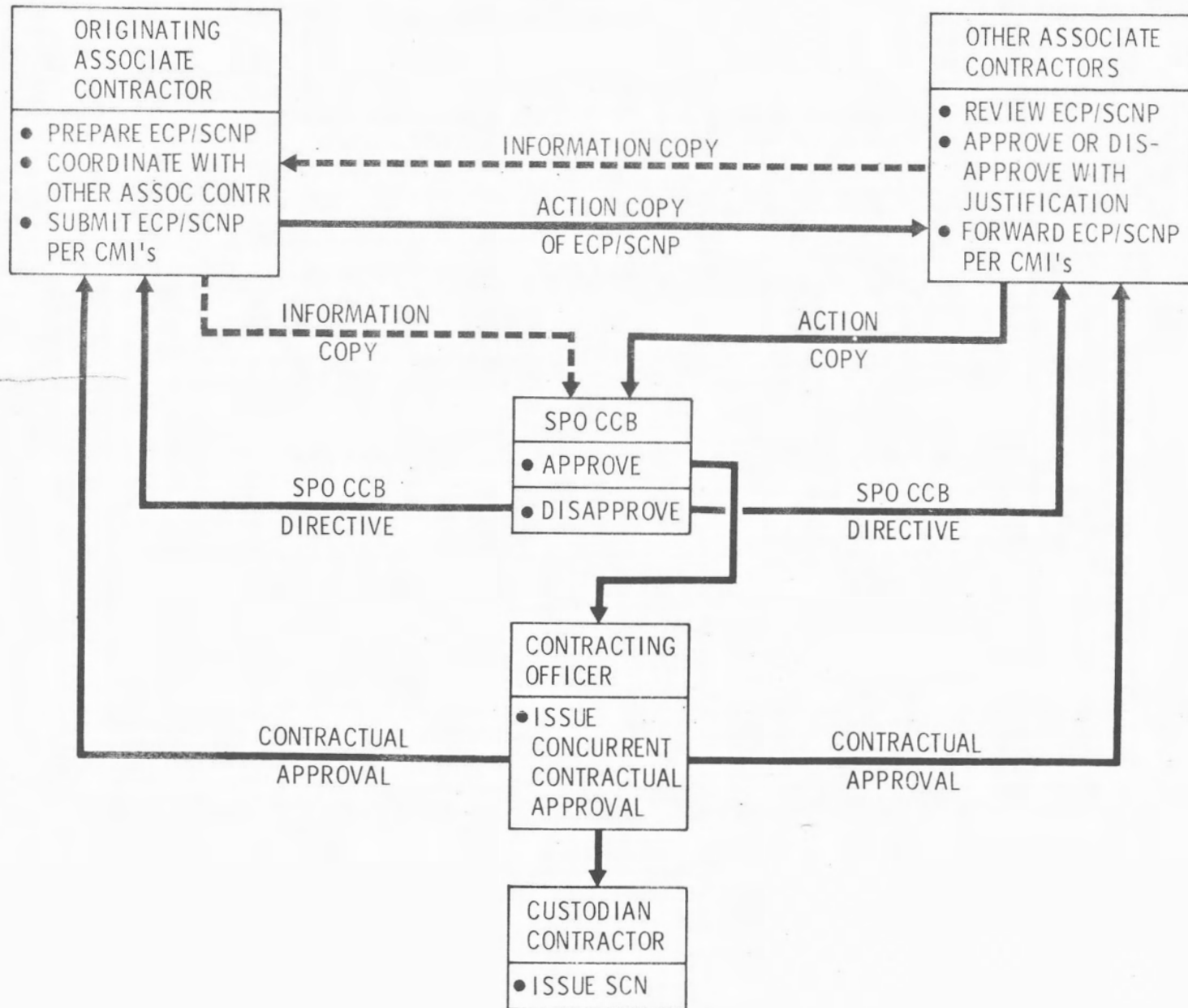
MIL-E-25110 Engines, Aircraft, Reciprocating, Model Specification for (Outline and Instructions for Preparation)

MIL-S-25793 (USAF) Specifications and Engineering Data for Environmental Control and Protection Systems for Air Vehicles, Instructions and Requirements for

MIL-S-25794A (USAF) Specifications, Proposals, Test Outlines, and Reports for Aerial Delivery Equipment, Weapon Systems, Instructions and Requirement for preparation of

MIL-S-25795A (USAF)	Specifications and Engineering Data for Declaration, Stabilization, and Recovery Parachute Equipment or Systems, Instructions and Requirements for Preparation of
MIL-P-25796 (USAF)	Propulsion Sub-Systems, Air Vehicle, Data for Evaluation and Development of
MIL-P-25797 (USAF)	Propulsion Engine Requirements, Air Vehicle, Specification for, Outline and Instructions for Preparation of
MIL-S-25894A (USAF)	Specifications and Engineering Data for Cargo-Handling Provisions in Air Vehicles
MIL-S-25898 (USAF)	Data for the Mission and Traffic Control (CNI) Subsystem on Weapon System Contracts
MIL-I-26036 (USAF)	Instructions for Preparation of Contractor-Prepared Specifications for Assembly-Type Ground Support Equipment
MIL-P-26367A (USAF)	Propellers, Aircraft, Model Specification for, (Outline and Instructions for Preparation)
MIL-S-26640 (USAF)	Specifications, Electronic Support Systems, Preparation of
MIL-STD-832	Preparation of Detail specifications for Aircraft (Fixed and Rotary Wing)
MIL-STD-838	Lubrication of Military Equipment

INTERFACE SPECIFICATION CHANGES



CONFIGURATION MANAGEMENT – ELEMENTS OF ORGANIZATION

CONFIGURATION CONTROL

- CHAIRMAN, CONFIGURATION CONTROL BOARD (CCB) - ALL DEPARTMENTS REPRESENTED ON BOARD; REPRESENTATIVES HAVE AUTHORITY TO COMMIT THEIR DEPARTMENTS TO A FIRM PLAN
- RECEIVES ALL CHANGE REQUESTS - IDENTIFIES (ASSIGNS UNIFORM CONTROL NUMBER-UCN); PREPARES AGENDA AND DISTRIBUTES COPIES OF CHANGE REQUEST TO BOARD MEMBERS
- PREPARES AN INTERNAL DIRECTIVE (OPERATIONS DIRECTIVE) FOR DISPOSITION OF ALL CHANGES SUBMITTED TO BOARD; IF APPROVED, OUTLINES THE DETAILED PLAN AND THE ACTION TO BE TAKEN BY EACH DEPARTMENT PER SCHEDULE
- PROCESSES CHANGES REQUIRING CUSTOMER APPROVAL THROUGH CCB; AFTER APPROVAL CONDUCTS SCHEDULE REVIEW AND DIRECTS ALL DEPARTMENTS TO PROCEED

CONFIGURATION MANAGEMENT – ELEMENTS OF ORGANIZATION

DOCUMENTATION MANAGEMENT

- PREPARES DOCUMENTATION LISTS AS DIRECTED BY CONTRACT AND/OR SPECIFICATIONS
- MAINTAINS AND CONTROLS DOCUMENTS AS REQUIRED
 - TYPE I - SUBMIT FOR INITIAL APPROVAL AND ALL SUBSEQUENT CHANGES
 - TYPE II - SUBMIT FOR INFORMATION ONLY
 - TYPE III - FOR INTERNAL USE ONLY, SUBMIT ONLY UPON CUSTOMER REQUEST

MARTIN 

DATA MANAGEMENT

- AFSCM 310-1 AND DD FORM 1423 ADJUSTMENTS TO PROGRAM NEEDS
- ~~SINGLE POINT~~ DATA MANAGEMENT INTERFACE
- DATA DEFINITIONS
- DATA REQUIREMENTS
- DATA INTERNAL REVIEW AND APPROVAL
- DATA RECORDS AND REPORTS

DATA DEFINITIONS

TYPE I DATA-- SPECIFIED BY DD-1423, CONTRACT EXHIBITS,
AND/OR CONTRACT GENERAL PROVISIONS;
REQUIRES DELIVERY AND CUSTOMER APPROVAL

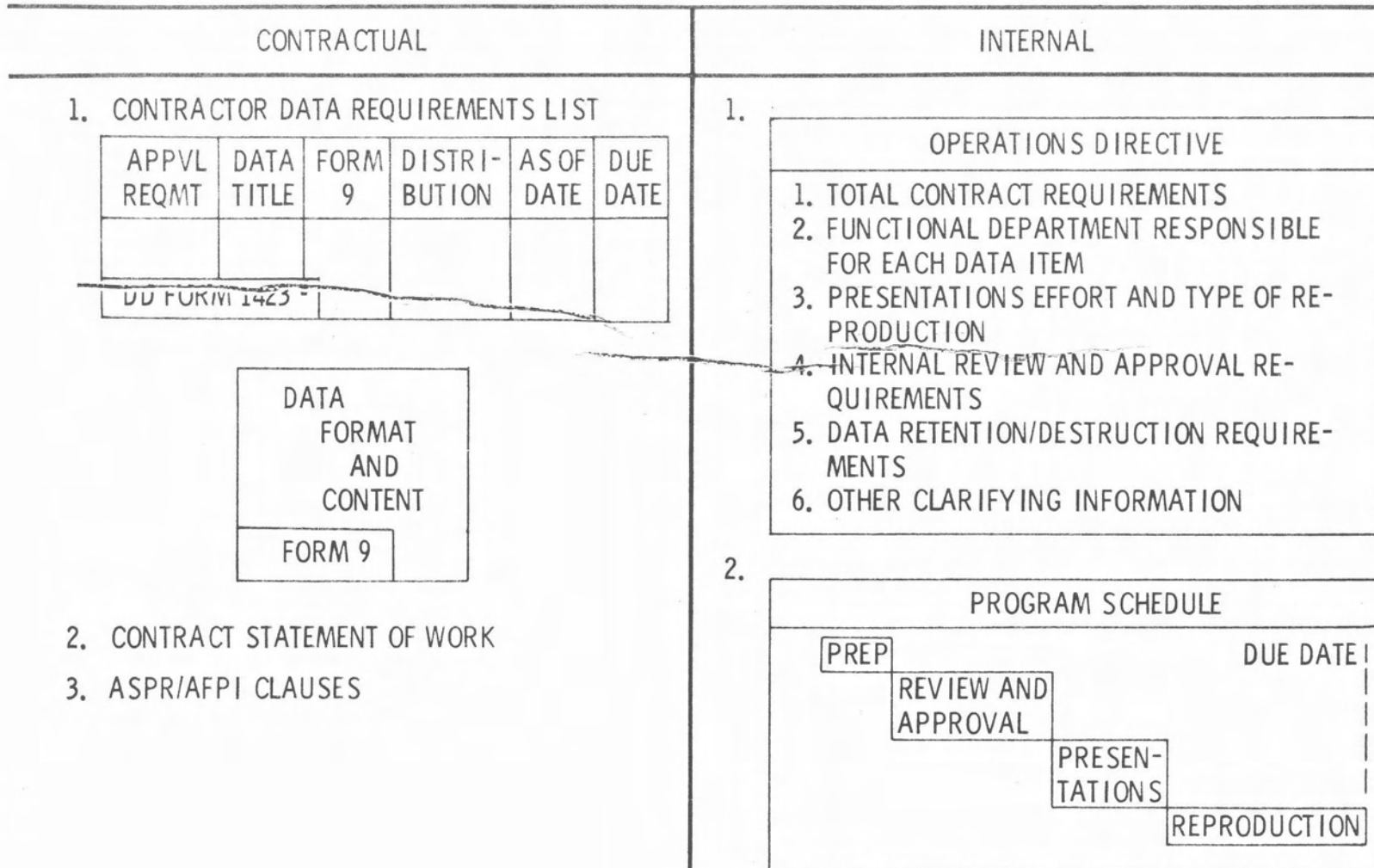
TYPE II DATA--SPECIFIED BY DD-1423, CONTRACT EXHIBITS
AND/OR CONTRACT GENERAL PROVISIONS;
REQUIRES DELIVERY

TYPE III DATA--MARTIN INTERNAL DATA

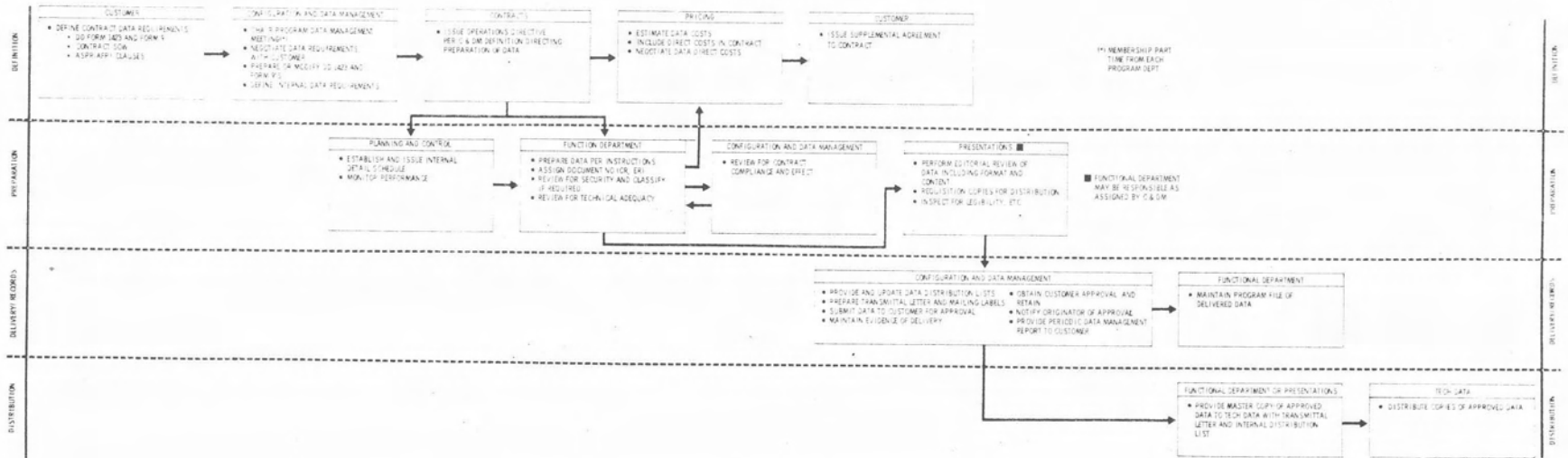
VENDOR DATA--SPECIFIED BY EXHIBIT "A" OF PS DRAWING:
SUPPLIED BY SUBCONTRACTORS

GFP DATA--SUPPLIED BY CUSTOMER TO OPERATE, MAINTAIN,
REPAIR, ETC., GFE RECEIVED UNDER CONTRACT

DATA REQUIREMENTS TYPE I and II DATA



DATA MANAGEMENT FLOW CHART - TYPE I DATA



DATA INTERNAL REVIEW and APPROVAL

- TECHNICAL ADEQUACY REVIEW--BY FUNCTIONAL DEPARTMENT
- SECURITY REVIEW--BY FUNCTIONAL DEPARTMENT
- EDITORIAL REVIEW--BY FUNCTIONAL DEPARTMENT OR PRESENTATIONS AS ASSIGNED BY C & DM (TYPE I AND II DATA)
--BY FUNCTIONAL DEPARTMENT (TYPE III DATA.)
- CONTRACT COMPLIANCE AND EFFECT REVIEW AND APPROVAL--BY C & DM (TYPE I DATA).
- PROGRAM EFFECT REVIEW AND APPROVAL--BY PCCB (BASELINED DATA-O. D. 3522-5002)

DATA RECORDS AND REPORTS

- TRANSMITTAL LETTER AS EVIDENCE OF DELIVERY--BY C & DM
- DATA (FILE COPY)--BY FUNCTIONAL DEPARTMENT
- DATA APPROVALS--BY C & DM
- PRIME DATA STATUS REPORT--BY C & DM
 - REPORT BY DD FORM 1423 NUMBER

LISTING OF DD 1423 ITEMS BY DATA ITEM NUMBER
 LISTING OF DATA REQUIREMENTS IN SOW AND/OR ASPR CLAUSES
 LISTING OF TYPE III DATA DELIVERED

JOB CODE 548-401		DATE 07/29/66	PRIME DATA STATUS ITEM NUMBER										PAGE NO. 1
CONTROL NUMBER	DOCUMENT NUMBER	DOCUMENT TITLE	F	CC	D	TRAN	TRANS	DUE	SCHED	S	APP/	DATE	REMARKS
			R	1423	E	LTR	DATE	DATE	APPVL	T	DISAP	RECD	
			Q	NG	P	NO			A	LTR			
6033001	ER13617	WT FINAL HYPERSONIC FORCE MHS	0	CC01	E	Q214	11134	11134	NR	X	NR	NR	
6033002	FR13686	WT FINAL HYPERSONIC HEAT XFER MHS	0	CC02	E	CC38	J2055	02055	NR	X	NR	NR	
6033003	ER13678	WT PT HYPERSONIC PRESSURE ARNOLD 2	0	CC03	E	GU10	J1125	C1125	NR	X	NR	NR	
6033004	ER13781	FINAL HYPERSONIC PRESSURE ARNOLD 2	0	CC04	E	J279	06039	06039	NR	X	NR	NR	AUTOM C.O. NO. 18
6033005	FR13682	WT FINAL HYPSON SCORCH PRESS ARNOLD	0	CC05	E	0050	02125	02125	NR	X	NR	NR	
6033006	ER13784	PT TRANSONIC SUPERSONIC DROGUE	0	CC06	E	0301	06115	07195	NR	X	NR	NR	

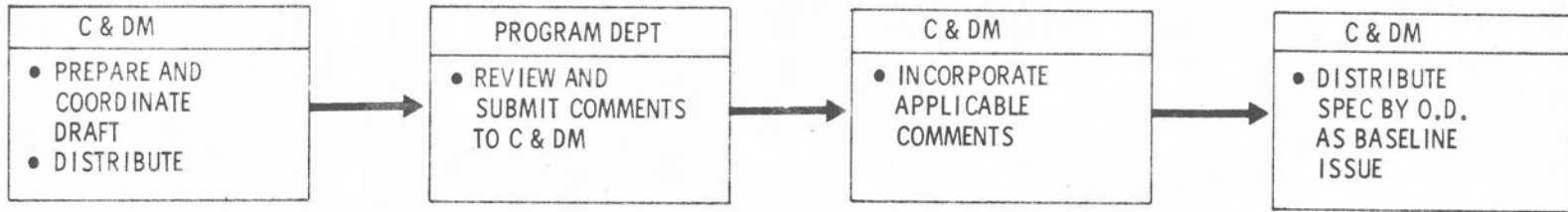
- REPORT BY DUE DATA

LISTING OF DATA REQUIREMENTS BY CONTRACTUAL DUE DATE

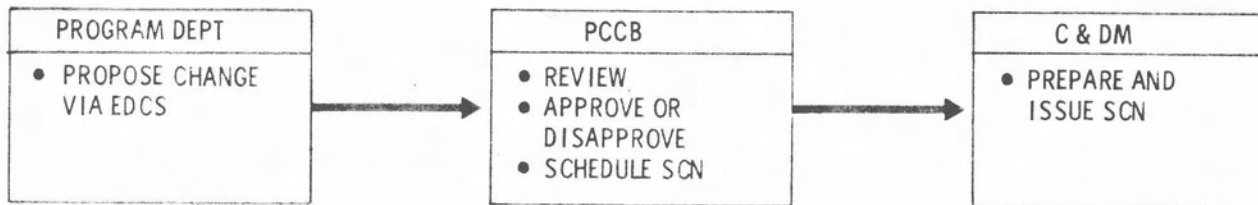
JOB CODE 548-403		DATE 07/29/66	PRIME DATA STATUS DUE DATE										PAGE NO. 1
CONTROL NUMBER	DOCUMENT NUMBER	DOCUMENT TITLE	F	CC	D	TRAN	TRANS	DUE	SCHED	S	APP/	DATE	REMARKS
			R	1423	E	LTR	DATE	DATE	APPVL	T	DISAP	RECD	
			Q	NG	P	NO			A	LTR			
6033031	ER13412	WT FINAL HYPERSONIC FORCE ARNOLD	0	CC24	E	C132	08204	08204	NR	X	NR	NR	
6033032	FR13413	WT FINAL SUPERSONIC FORCE LANGLEY	0	CC25	E	C136	08264	08264	NR	X	NR	NR	
6035039	429AC100C79	SV-5P LOFT LINES	C	CC78	E	0143	08284	08284	NR	X	NR	NR	

PROGRAM SPECIFICATION

PREPARATION AND APPROVAL

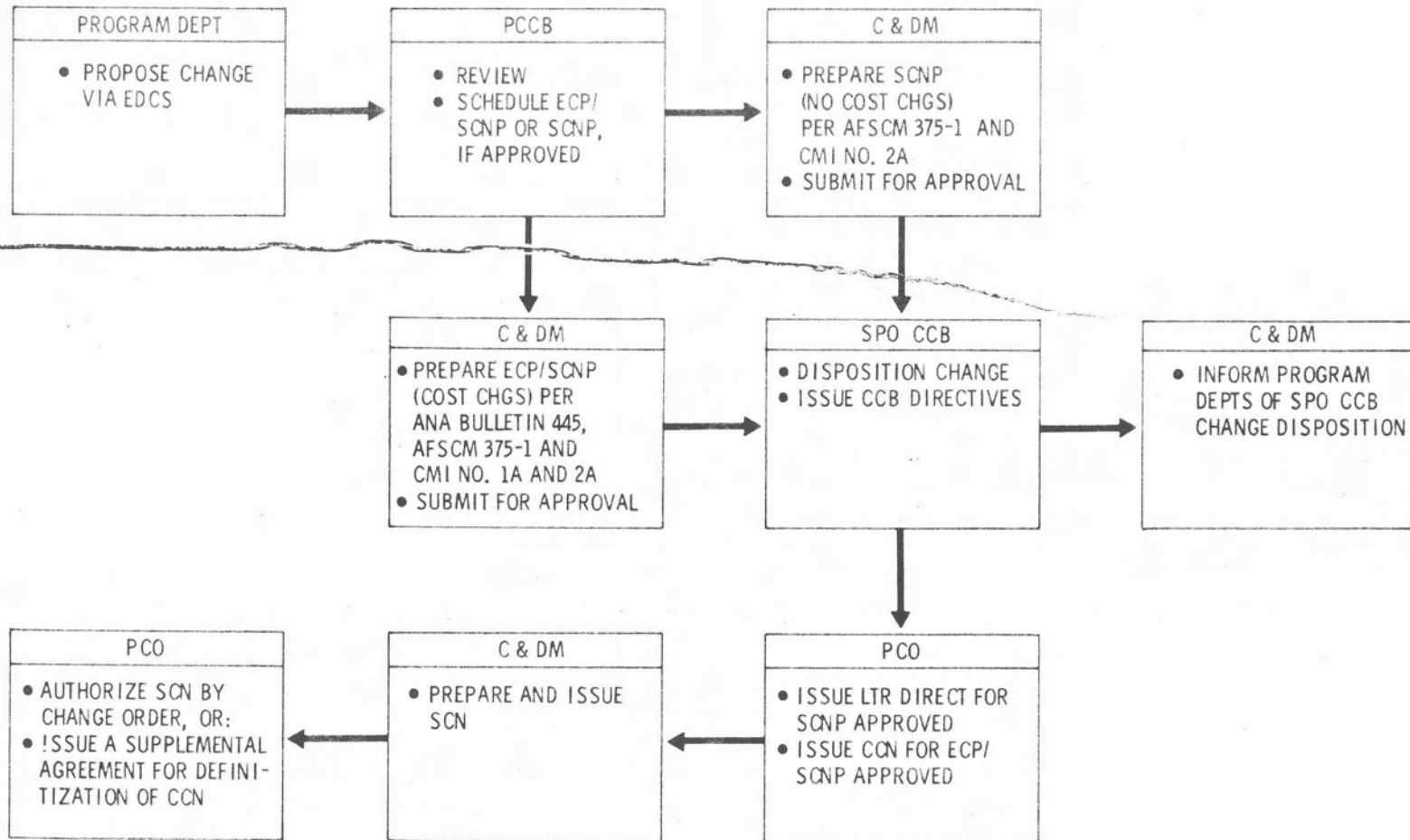


MAINTENANCE AND APPROVAL



CONTRACT SPECIFICATION CHANGES--PARTS I and II

MAINTENANCE AND APPROVAL



ECP/SPECIFICATION CHANGE STATUS REPORT & TRANSMITTAL FORM

ECP SPECIFICATION CHANGE STATUS REPORT TRANSMITTAL

ECP/ SPEC	CONTROL NUMBER	ECP NO.	SPEC NO.	PART	SCNP/SDNR/DWG	UNIFORM CONTROL NUMBER	EFF	Q	TRAN	TRAN	C	APP/ DATE	CCM	G	R	SCN	CO	SA	TITLE	REMARKS	THIS FIELD ONLY	
																					1	2
S	6027009																					
A	6025007																					
D	6025006																					

JOB CODE 348-404 DATE 07/29/66 PRIME ECP STATUS REPORTS PAGE NO. 1

CONTROL NUMBER	ECP	SPEC	SCNP/SDNR/DWG	UNIFORM CONTROL NUMBER	EFF	Q	TRAN	TRAN	C	APP/ DATE	CCM	G	R	SCN	CO	SA	TITLE	REMARKS	
6025003	R	P012	1104 1 SCNP B	M 00671	1234	Y	0385	07235	M	NA	10125	005	Y	-	001	NA	010 ACCEL TESTS COLD PLATES		
6025004	R	P012	1104 1 SCNP C	A 00671	1234	M	0385	07235	A	NA	10125	005	Y	-	005	NA	010 INCREASE GROUPE CHUTES	SCN 1 IN ERROR	
6025001	R	F 001	1104 1 SCNP E	M 90001	1234	Y	0467	09015	M	NA	10125	005	Y	Y	001	NA	010 GROUND COOLING AIR FLOW RE-DIRECTION	SEE ECP 3	
6025002	R	F 001	1104 1 SCNP E	A 90001	1234	M	0467	10155	A	NA	01256	009	Y	Y	NA	NA	010 GROUND COOLING AIR FLOW RE-DIRECTION	SEE ECP 3	
6025005	R	F 002	1104 1 SCNP J	M 00125	1234	M	0501	09155	M	NA	11195	007	Y	Y	007	NA	011 REV ELS VALVE OPENING TIME		
6025006	R	F 003	1104 1 SCNP L	C 00185	---	---	---	---	---	NA	NA	NA	---	Y	NA	NA	NA	CANCELLED	
6027001	R	F 003	1113 1 SCNP L	C 00185	---	---	---	---	---	NA	NA	NA	---	Y	NA	NA	NA	CANCELLED	
6025007	R	F 004	1104 1 SCNP D	RL M 00137	1234	Y	0554	10015	M	NA	01256	009	Y	Y	010	NA	REV TO PRESSURE REDUCERS AND		
6025008	R	F 005	1113 1 SCNP K	M 00145	1234	M	0569	10065	M	NA	01256	009	Y	Y	008	NA	DELET OF LIQUID FLOW LGCP		

JOB CODE 348-405 DATE 07/29/66 PRIME SPECIFICATION CHANGE STATUS REPORTS PAGE NO. 1

CONTROL NUMBER	ECP	SPEC	SCNP/SDNR/DWG	UNIFORM CONTROL NUMBER	EFF	Q	TRAN	TRAN	C	APP/ DATE	CCM	G	R	SCN	CO	SA	TITLE	REMARKS	
6125002		025	1104 1		L---												WIND TUNNEL TESTS		
6194001		029	1104 1														RESERVED		
6026009	R	X NA	1104 1 SCNP A	C NA	---	---	Y	NA	NA	C	NA	NA	---	Y	NA	NA	NA	CANCELLED	
6025003	R	P012	1104 1 SCNP B	M 00671	1234	Y	0385	07235	M	NA	10125	005	Y	-	001	NA	010 ACCEL TESTS COLD PLATES		
6025004	R	P012	1104 1 SCNP C	A 00671	1234	M	0385	07235	A	NA	10125	005	Y	-	005	NA	010 INCREASE GROUPE CHUTES	SCN 1 IN ERROR	
6026010	U	F NA	1104 1 SCNP D	S 00121	1234	Y	0435	08185	D	0387	09095	NA	---	Y	NA	NA	NA	PRESSURE SENSORS CHANGE	SEE ECP 3
6025007	R	F 004	1104 1 SCNP D	RL M 00137	1234	Y	0554	10015	M	NA	01256	009	Y	Y	010	NA	REV TO PRESSURE REDUCERS AND		
6025001	R	F 001	1104 1 SCNP E	M 90001	1234	Y	0467	09015	M	NA	10125	005	Y	Y	001	NA	010 GROUND COOLING AIR FLOW RE-DIRECTION	SEE ECP 3	
6026011	U	F NA	1104 1 SCNP F	M 00671	1234	M	0514	09145	D	0420	10195	NA	---	Y	003	004	NA	VEHICLE ALIGNMENT	
6027003	U	F NA	1104 1 SCNP G	D 00095	1234	Y	0514	09145	D	0368	10045	NA	---	Y	NA	NA	NA	REDESIGN FLANGE BEARING	
6027004	U	F NA	1104 1 SCNP G	A 00095	1234	Y	0573	10075	A	0420	10025	NA	---	Y	003	004	NA	REDESIGN FLANGE BEARING	
6027005	U	F NA	1104 1 SCNP H	A 00471	1234	Y	0514	09165	A	0388	10115	NA	---	Y	002	001	NA	BARO SWITCH TESTING	
6027006	U	F NA	1104 1 SCNP I	A 00671	1234	M	0514	09165	A	0388	10115	NA	---	Y	002	001	NA	ENVIRONMENTAL CONTROL TEST	
6025005	R	F 002	1104 1 SCNP J	M 00125	1234	M	0507	09155	M	NA	11195	007	Y	Y	007	NA	011 REV ELS VALVE OPENING TIME		
6027007	R	F NA	1104 1 SCNP K	A 00107	1234	Y	0515	09165	A	0388	10115	NA	---	Y	002	001	NA	DIPLEXER, VHF TELEMETRY	
6027008	R	F NA	1104 1 SCNP L	A 00074	1234	Y	0523	09215	A	0420	10245	NA	---	Y	003	004	NA	REDESIGN PS DRAWINGS	
6027009	R	F NA	1104 1 SCNP M	A 00144	1234	Y	0529	09245	A	0420	10215	NA	---	Y	003	004	NA	REDESIGN GAGE	
6027010	R	F NA	1104 1 SCNP N	A 00155	1234	M	0530	09245	A	0420	10215	NA	---	Y	003	004	NA	TC4 + 705 THERMOCOUPLE REP.	
6027011	R	F NA	1104 1 SCNP O	A 00217	1234	M	0540	10045	A	0420	10215	NA	---	Y	003	004	NA	RECD + CONFIGURATION DATA	

- D - INPUTS BOTH ECP AND SPECIFICATION REPORT
- 4 - INPUTS ONLY ECP REPORT
- 5 - INPUTS ONLY SPECIFICATION REPORT

CONFIGURATION MANAGEMENT – ELEMENTS OF ORGANIZATION

DATA REPORTING AND STATUS ACCOUNTING (MECHANIZED)

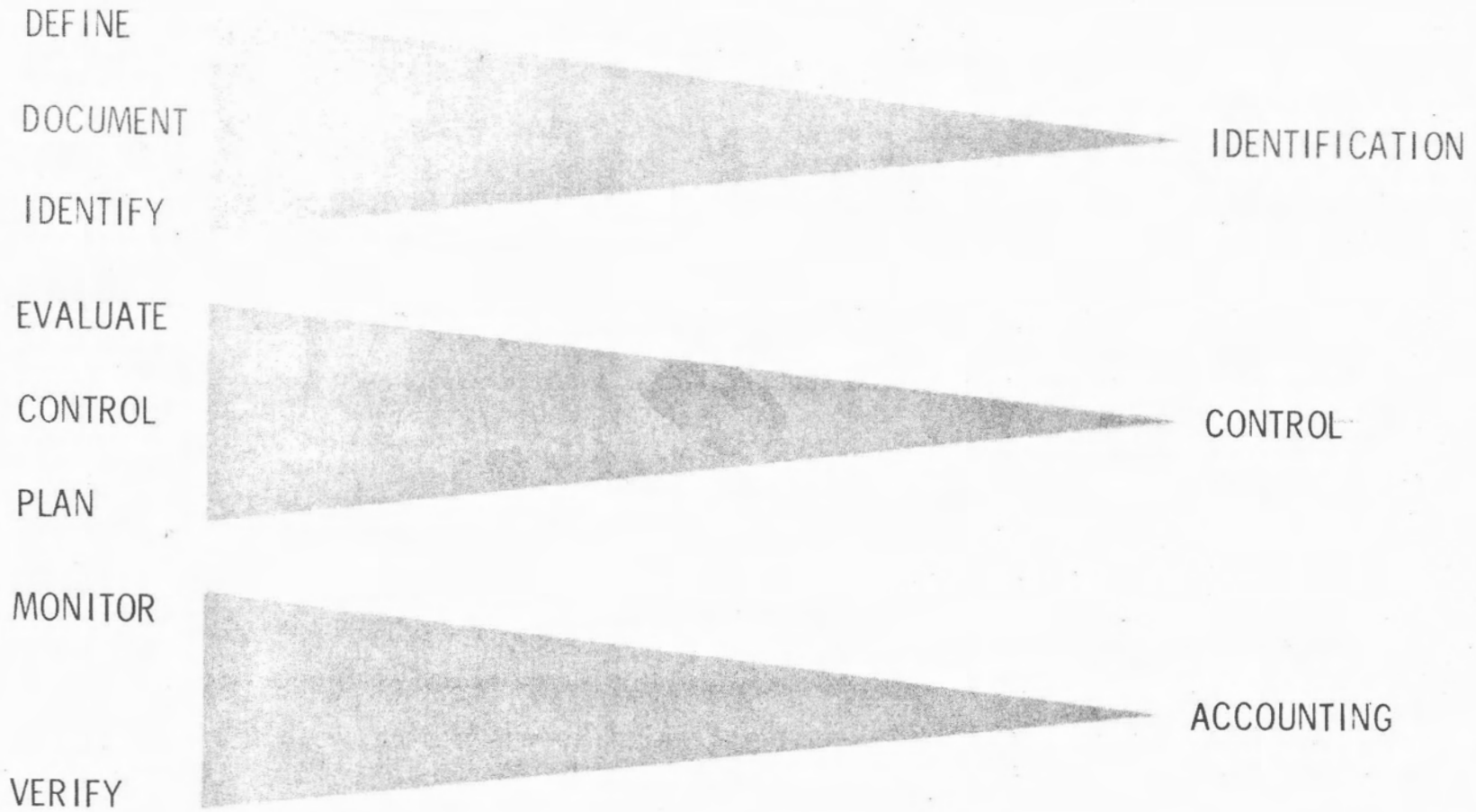
- REVIEWS RELEASED ENGINEERING (ORIGINALS) FOR COMPATIBILITY WITH APPROVED CHANGE REQUEST AND OPERATIONS DIRECTIVE
- ASSIGNS A CHANGE ACCOUNTABILITY NUMBER TO EACH DRAWING CHANGE (DCN/EO) AND NOTES APPROVED EFFECTIVITY; BOTH THE ACCOUNTABILITY NUMBER AND THE EFFECTIVITY ARE WRITTEN ON FACE OF ENGINEERING CHANGE MASTER BEFORE RELEASE TO REPRODUCTION
- PREPARES TRANSMITTAL TO DATA PROCESSING FOR PREPARATION OF TAB RUN REPORTS AND BUY-OFF CARDS; TRANSMITTALS ARE CODED FOR LOCATION, EVENTS, CRITICAL COMPONENTS, RETROFIT, ETC.

SYSTEM PROGRAM LIFE CYCLE

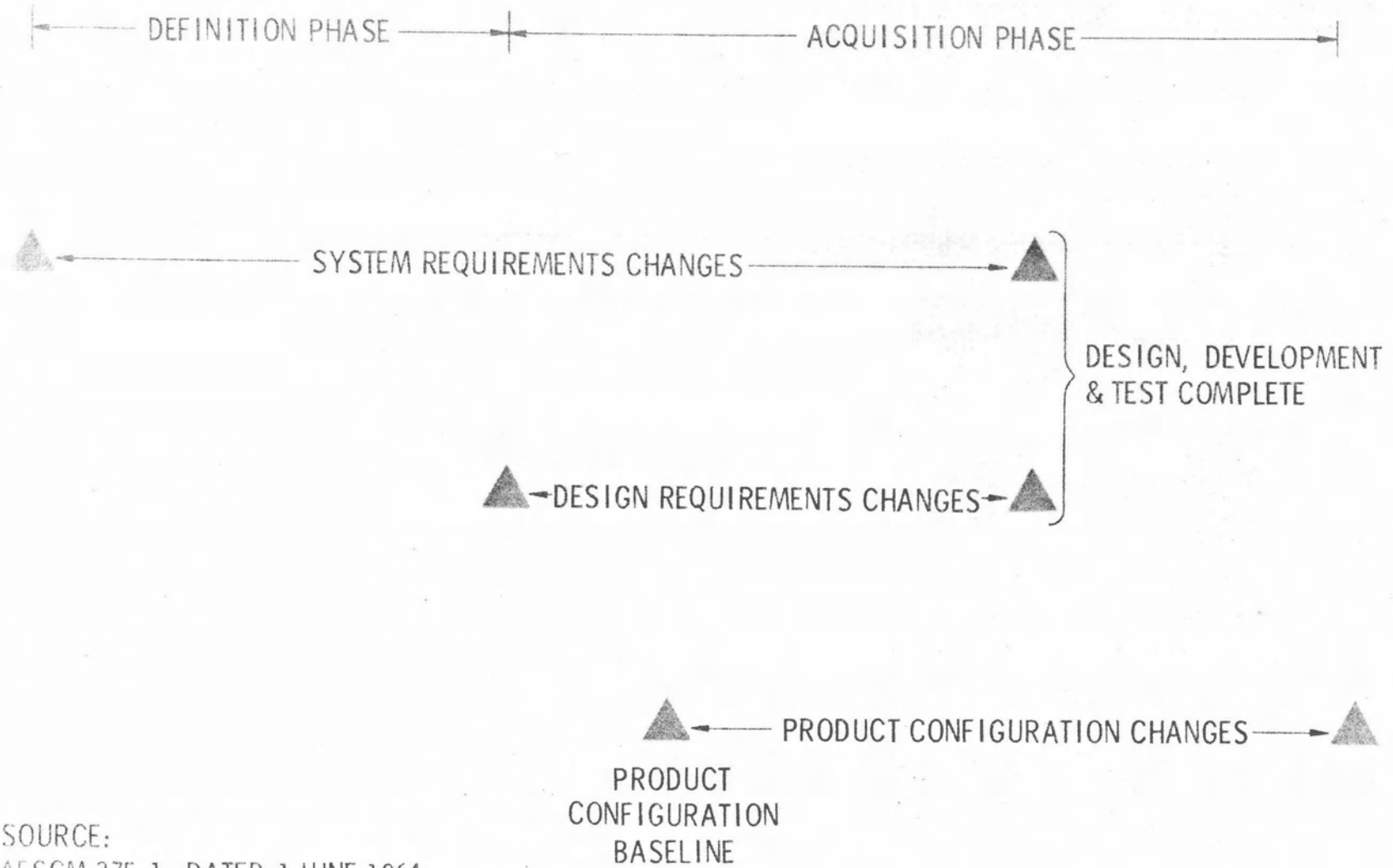
(REFERENCES: AFSCM 375-1 -3 -5 • AFSCM 310-1 • AFR 80-14)

PROGRAM PHASES	CONCEPTUAL	DEFINITION	ACQUISITION		OPERATIONAL
AF COMMANDS	AIR FORCE SYSTEMS COMMAND	AIR FORCE SYSTEMS COMMAND	AIR FORCE SYSTEMS COMMAND		AIR FORCE LOGISTICS COMMAND AND USING COMMAND
MANAGEMENT RESPONSIBILITY					
SUPPORTING FUNCTIONS		AIR FORCE LOGISTICS COMMAND	AIR FORCE LOGISTICS COMMAND, AIR FORCE TRAINING COMMAND, USING COMMAND		
AIR FORCE MANAGEMENT ACTIONS	APPOINT SYSTEM PROGRAM DIRECTOR	APPOINT SYSTEM SUPPORT MANAGER ISSUE REQUEST FOR PROPOSALS EVALUATE PROPOSALS SELECT CONTRACTORS	FIRST ARTICLE CONFIGURATION INSPECTION	← FIRST UNITS ACCEPTED → ← CHANGES PER ANA BULLETIN 445 → ← AFM 66-1 MAINTENANCE MANAGEMENT →	SYSTEMS SUPPORT MANAGER ASSUMES RESPONSIBILITY DISESTABLISH SYSTEM PROGRAM OFFICE CATEGORY III TESTING
CONTRACTOR ACTIONS		SYSTEM ENGINEERING DOCUMENTATION PROPOSALS SPECIFICATIONS DEVELOPMENT	CATEGORY I TESTING DESIGN AND DEVELOPMENT	PRODUCTION ← TRANSITION PERIOD →	CATEGORY II TESTING UPDATE CHANGES MODIFICATIONS INSTALLATION AND CHECKOUT TECH. DATA PREPARATION AND MAINT
SYSTEMS PROGRAM DOCUMENTATION SOR	PRELIMINARY TECHNICAL DEVELOPMENT PLAN	PROPOSED SYSTEM PACKAGE PLAN	SYSTEM PACKAGE PROGRAM PUBLISHED	← CONFIGURATION ACCOUNTING →	
BASELINES	PROGRAM REQUIREMENTS BASELINE →	DESIGN REQUIREMENTS BASELINE →	PRODUCT CONFIGURATION BASELINE →		
BASELINE APPROVALS	SYSTEM SPECIFICATION	END ITEM SPECIFICATIONS PART I	END ITEM SPECIFICATIONS PART II	← SPECIFICATIONS MAINTENANCE →	

CONFIGURATION MANAGEMENT - GROWING PAINS



CONFIGURATION MANAGEMENT



SOURCE:
AFSCM 375-1, DATED 1 JUNE 1964
NPC 500-1, DATED 18 MAY 1964

CONFIGURATION MANAGEMENT - BACKGROUND

CONCURRENCY

IOC

UOC

UTILIZATION

INSTALLATION & CHECKOUT

PRODUCTION

DESIGN & DEVELOPMENT

CONCEPTUAL



OBJECTIVE

REDUCE TIME "X" TO SHORTEST INCREMENT POSSIBLE

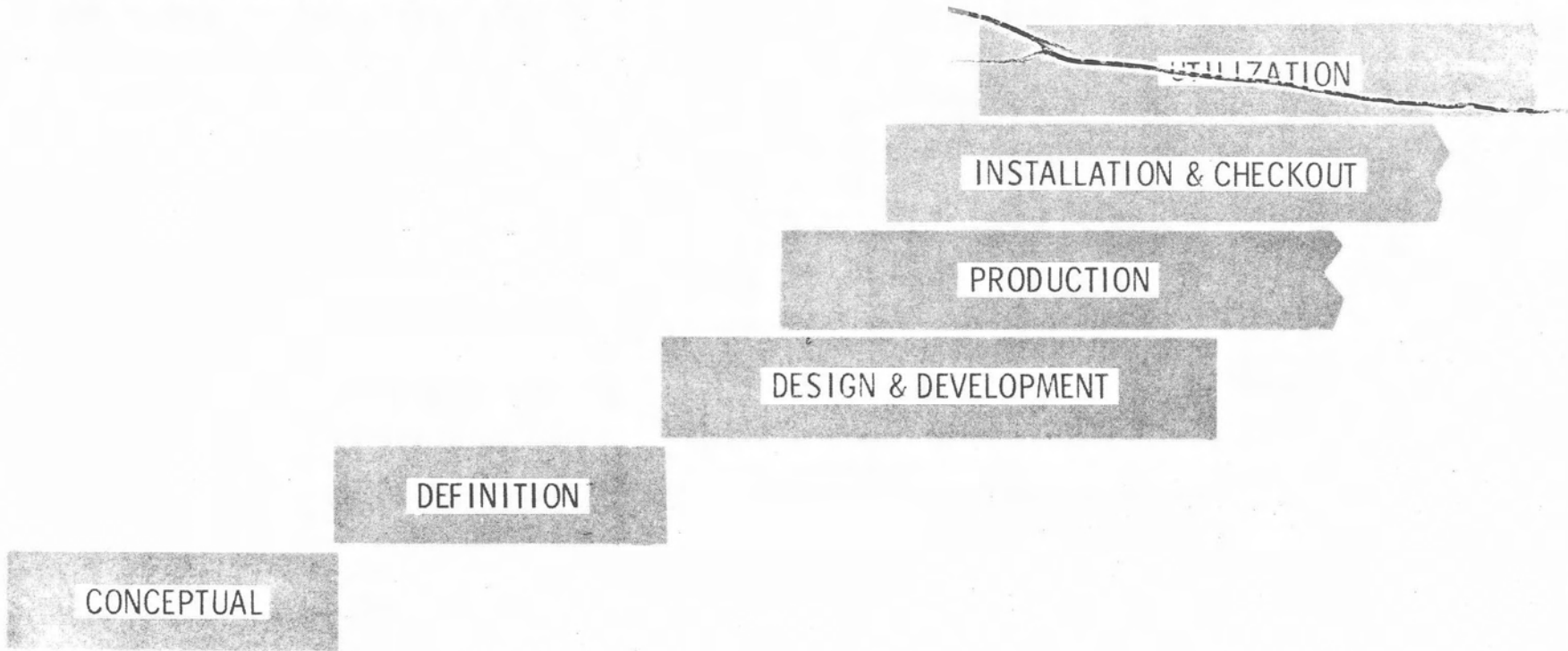
CONSTRAINTS

INADEQUATE DEFINITION
INADEQUATE PROCEDURES

IOC - INTERIM OPERATIONAL CAPABILITY
UOC - ULTIMATE OPERATIONAL CAPABILITY

CONFIGURATION MANAGEMENT - BACKGROUND

PROGRAM (CONTRACT) DEFINITION



CONFIGURATION MANAGEMENT - BACKGROUND

CONCURRENCY, THE CONTRACTOR'S VIEW

INITIAL DESIGN

SUSTAINING DESIGN

PROCUREMENT

PRODUCTION PLANNING

TOOL PLANNING & DESIGN

TOOL FABRICATION

PARTS FABRICATION & ASSEMBLY

INTEGRATION & TEST

ACCEPTANCE & DELIVERY

TEST/INSTALLATION & CHECKOUT

OPERATION/SUPPORT

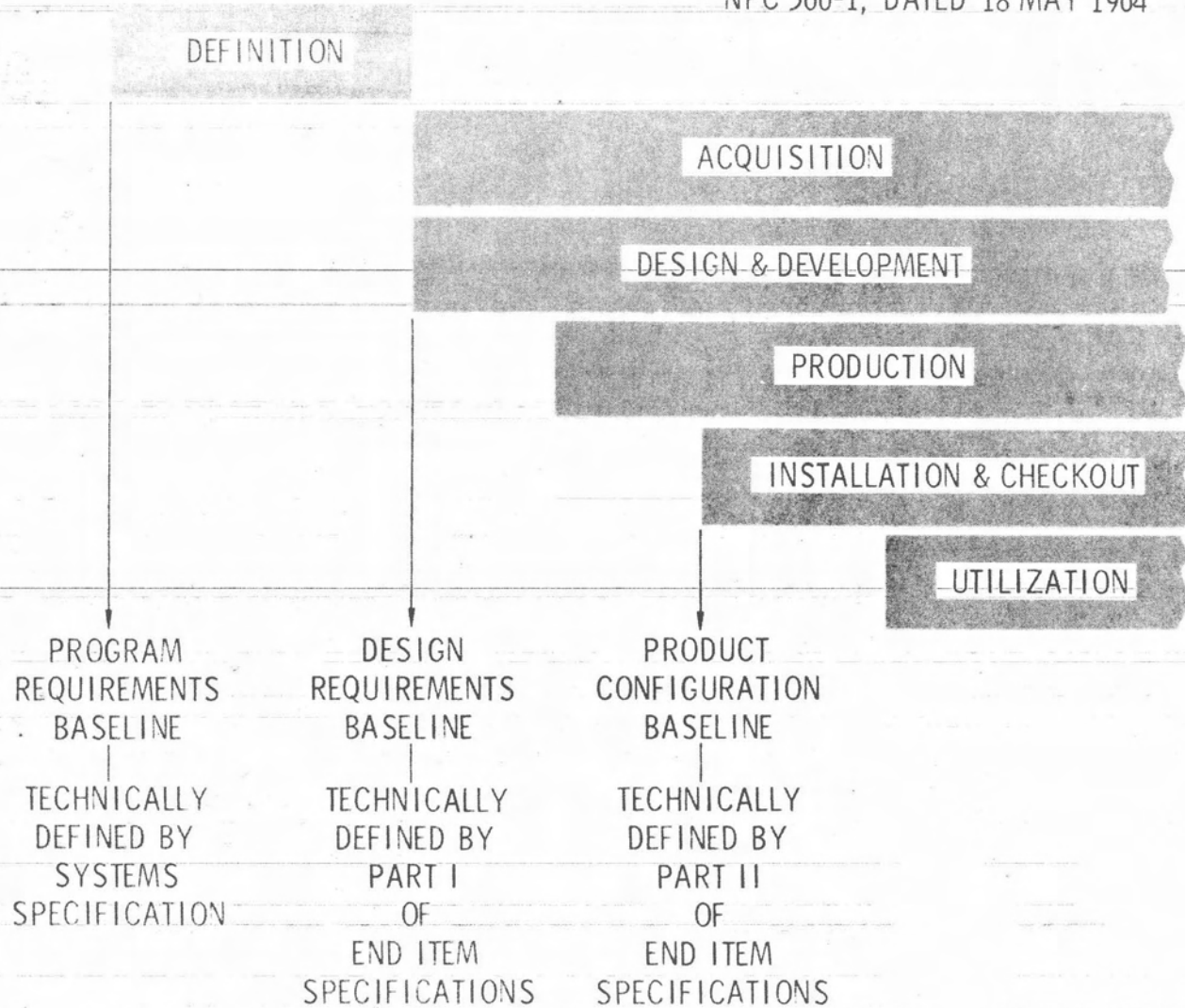
CONFIGURATION MANAGEMENT - BASELINE MANAGEMENT

SOURCE:

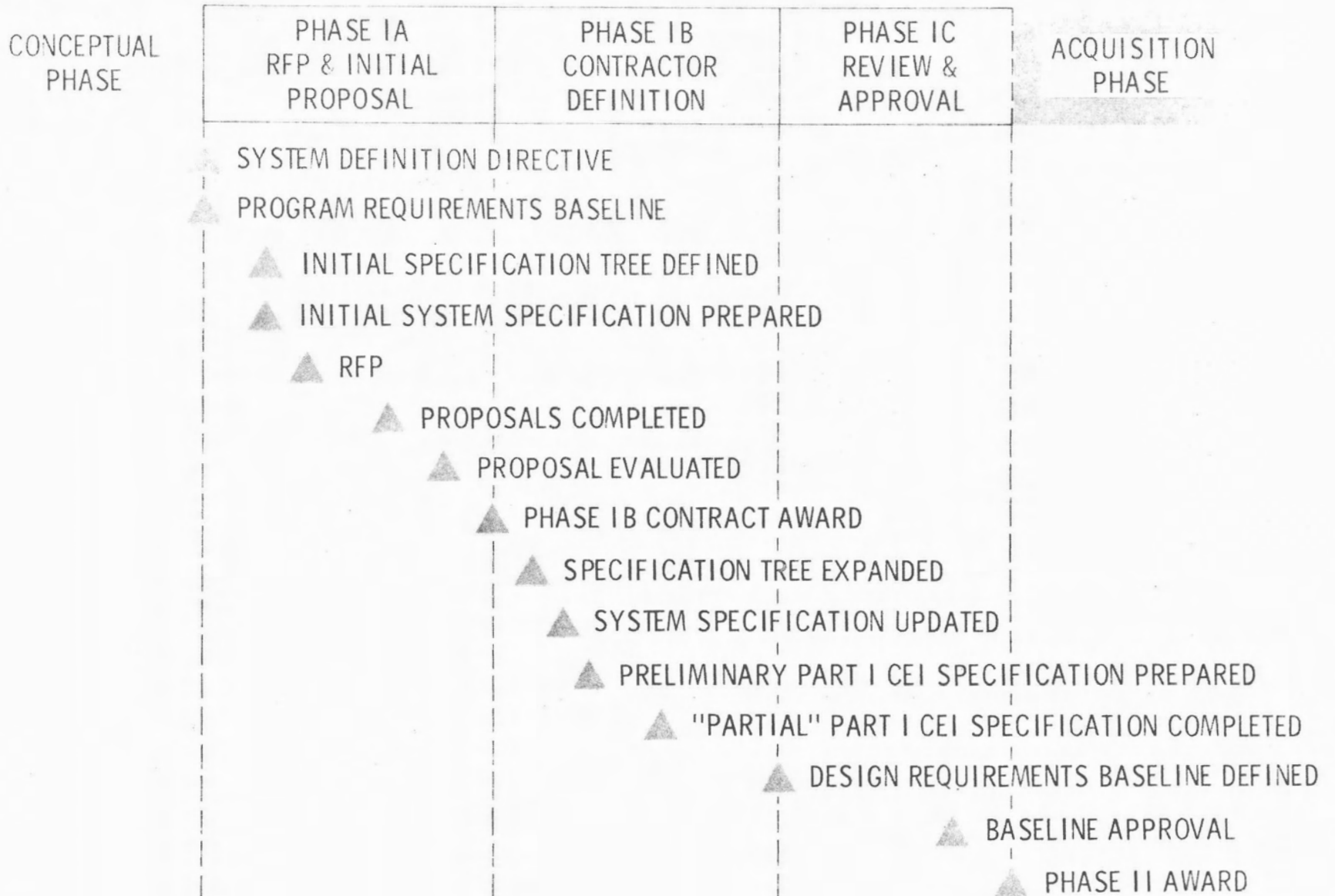
AFSCM 375-1, DATED 1 JUNE 1964

NPC 500-1, DATED 18 MAY 1964

CONCEPTUAL



DEFINITION PHASE MILESTONES



ACQUISITION PHASE MILESTONES

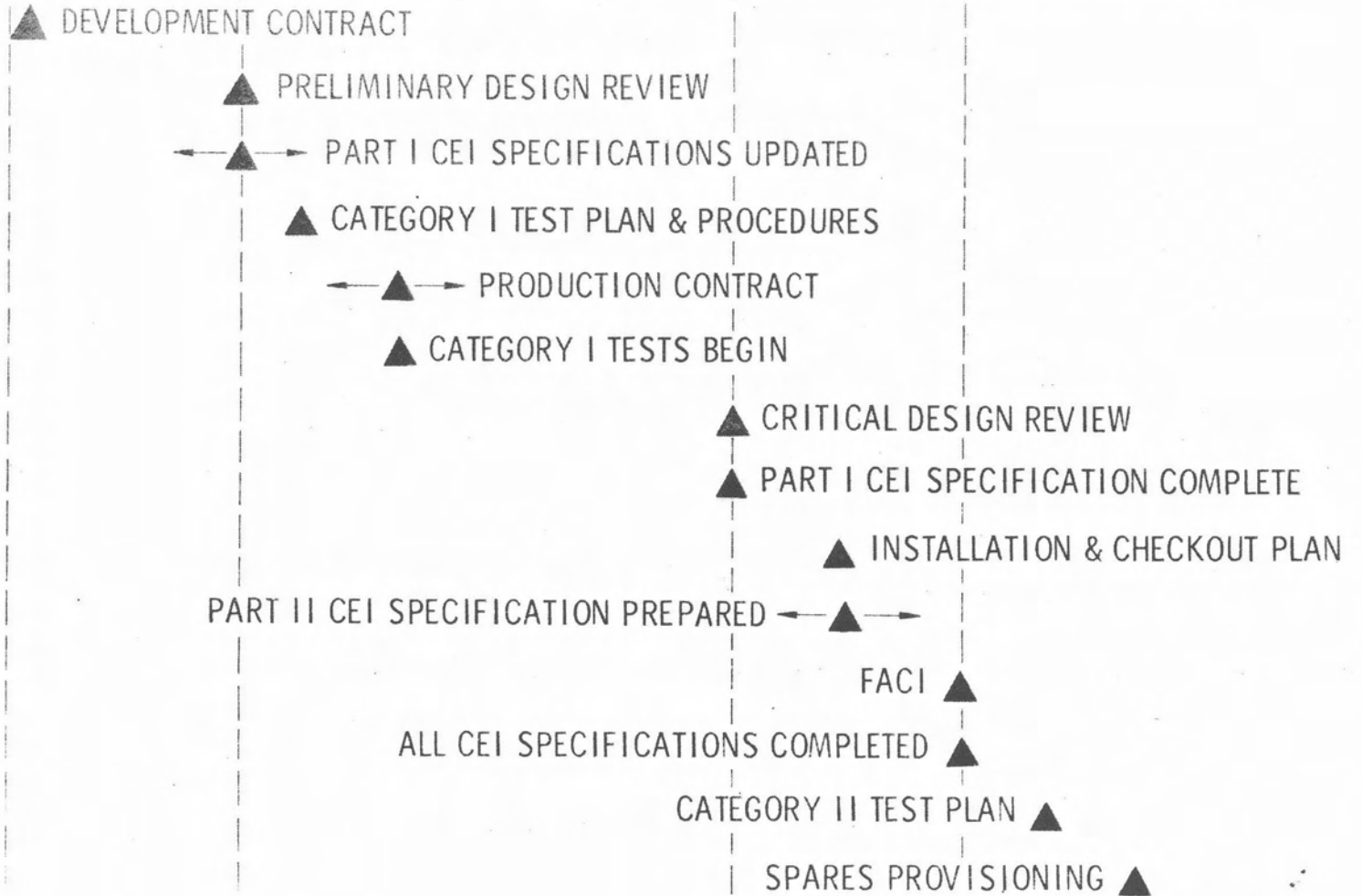
DEFINITION
PHASE

ACQUISITION PHASE

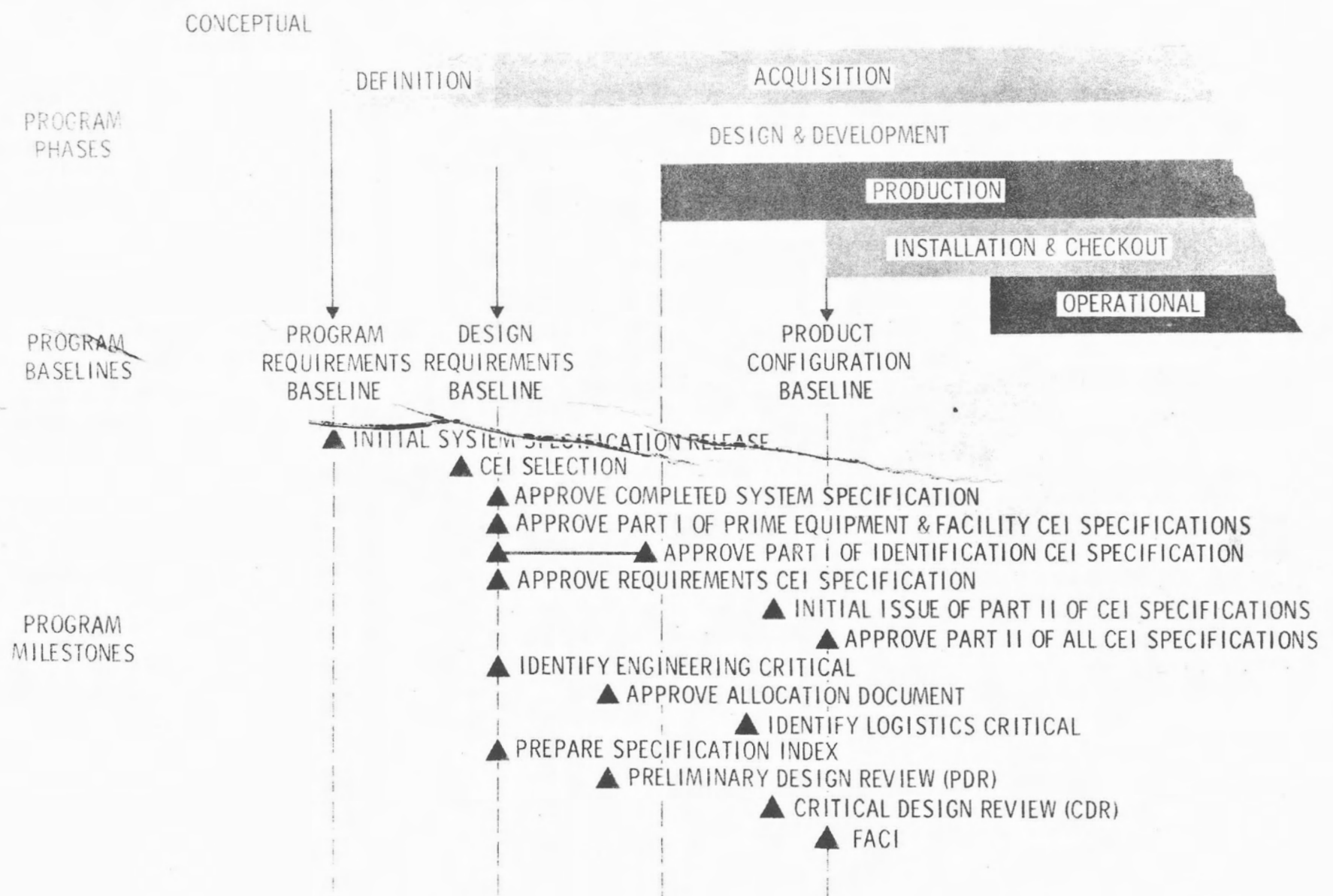
PDR

CDR

FACI



PROGRAM PHASES, BASELINES & MAJOR MILESTONES



CONFIGURATION REVIEWS & INSPECTIONS

PRELIMINARY DESIGN REVIEW (PDR).

FORMAL TECHNICAL REVIEW OF BASIC DESIGN APPROACH FOR

- SV-5D VEHICLE
- COMMAND BUFFER

CRITICAL DESIGN REVIEW (CDR)

FORMAL TECHNICAL REVIEW OF PRODUCTION DESIGN PRIOR TO COMMITTING HARDWARE DESIGN TO BUILD FOR

- SV-5D VEHICLE
- COMMAND BUFFER

FIRST ARTICLE CONFIGURATION INSPECTION (FACI)

REVIEW & ACCEPTANCE OF CONTRACT END ITEM (FIRST ARTICLE)

- SV-5D VEHICLE
- COMMAND BUFFER

DOCUMENTATION

- DRAWING CHANGE ACCOUNTABILITY
- COMPLETE SET OF DRAWINGS
- CONTRACTUAL DOCUMENTATION STATUS (ECP, CCN & SCNP)
- SPECIFICATION COMPLIANCE INSPECTION LOGS
- TEST DATA LOGS
- QUALIFICATION TEST DATA LOGS
- QUALIFICATION CERTIFICATION LOGS

PRODUCTION CONFIGURATION BASELINE
ACCEPTANCE/DD-250

NONDELIVERABLE AGE BASELINE

PROGRAM REVIEW OF CONFIGURATION & ACCEPTABILITY

DOCUMENTATION

- DESIGN CRITERIA
- DRAWINGS
- DRAWING CHANGE ACCOUNTABILITY
- LOG RECORDS



CONTROL

EVALUATION & APPROVAL OF PROPOSED CHANGES ACCOMPLISHED BY CONFIGURATION CONTROL BOARD (CCB)

REPRESENTATIVE FROM EACH DEPARTMENT INVOLVED IN SYSTEM DEVELOPMENT & OPERATIONAL USE

CHAired BY CONFIGURATION MANAGER OR HIS REPRESENTATIVE

NOT A VOTING BOARD

MEMBERS PRESENT IMPACT ON THEIR DEPARTMENT
CHAIRMAN WEIGHS INPUTS & MAKES DECISION

EACH MEMBER CAPABLE OF COMMITTING HIS DEPARTMENT TO CCB DECISIONS

EACH PROPOSED CHANGE EVALUATED
APPROVAL/DISAPPROVAL & SCOPE
TOTAL SYSTEM EFFECT
EFFECT ON PROGRAM COSTS
EFFECT ON PROGRAM SCHEDULES
CONTRACT COMPLIANCE
WHEN & HOW CHANGE IS TO BE IMPLEMENTED

ALL DEPARTMENTS MUST ABIDE BY CCB DECISION

APPROVED CHANGES BECOME PART OF OFFICIALLY APPROVED CONFIGURATION

2-15-64

CONFIGURATION MANAGEMENT – IMPLEMENTATION

CONTRACT TECHNICAL REQUIREMENTS

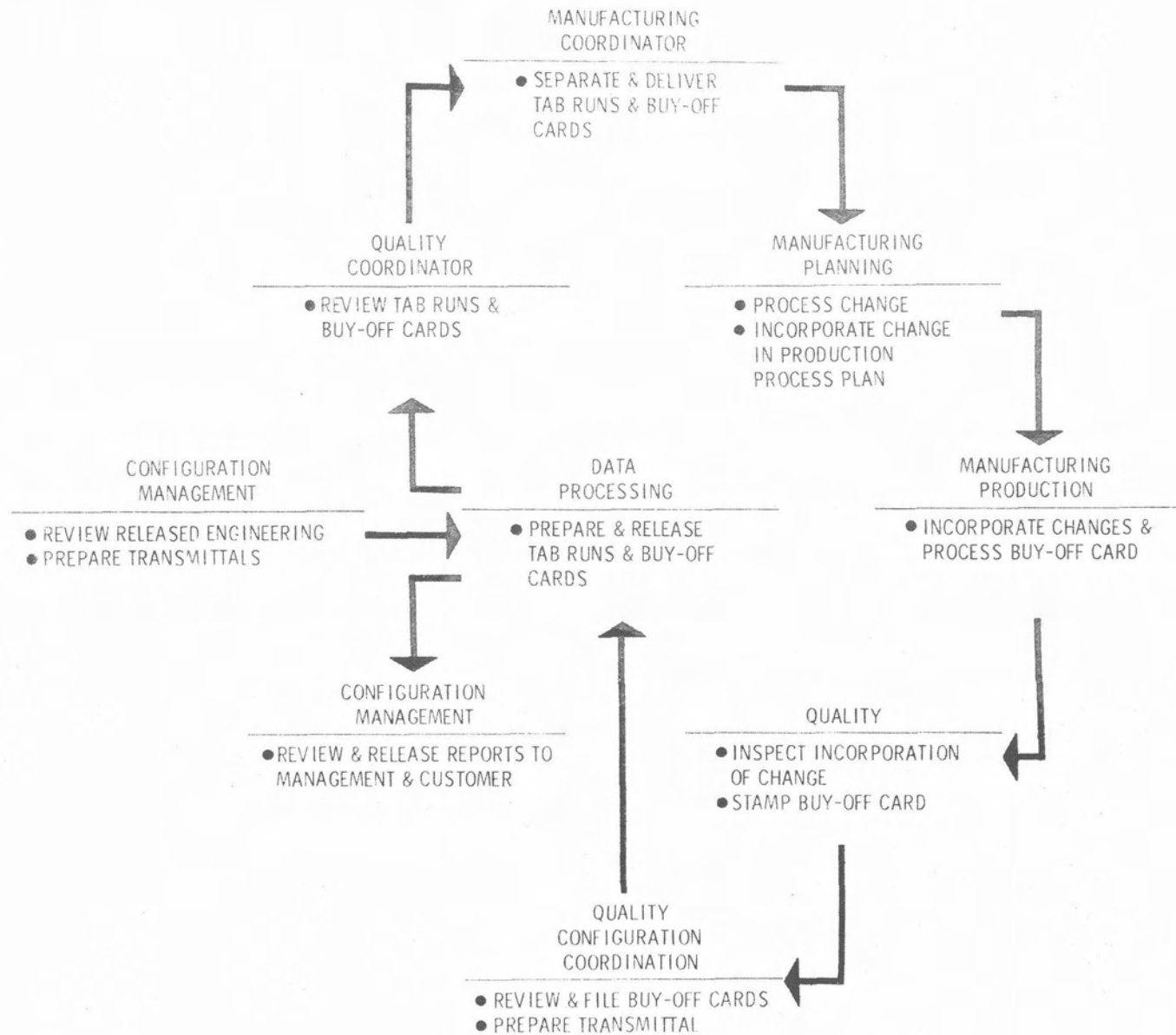
- REPRESENTS CONTRACT TECHNICAL REQUIREMENTS ON CCB TO EVALUATE AND ESTABLISH SCOPE (IN- OR OUT-OF-SCOPE TO CONTRACT AND/OR SPECIFICATIONS) ON ALL CHANGES
- PREPARES AND PRESENTS ECPs AND SCNPs FOR NEGOTIATION WITH CUSTOMER; NOTIFIES CONFIGURATION CONTROL OF STATUS FOR INCORPORATION IN THE MECHANIZED CONTRACTUAL DOCUMENT TAB RUN REPORT
- PRESENTS TO THE COMPANY CCB ALL INPUTS DIRECTED BY THE CUSTOMER CCB, CHANGE IN EFFECTIVITY, NEW REQUIREMENTS, ETC.
- PREPARES, SUBMITS AND MAINTAINS TYPES I, II AND III DOCUMENTS AS REQUIRED BY CONTRACT; SUBMITS STATUS INFORMATION TO CONFIGURATION CONTROL FOR INCORPORATION IN THE MECHANIZED TAB-RUN REPORT
- MAINTAINS A CLOSE WORKING RELATIONSHIP WITH THE CHAIRMAN AND REPRESENTATIVES OF THE CUSTOMER CCB

CONFIGURATION MANAGEMENT – IMPLEMENTATION

CONFIGURATION MANAGEMENT/CONTROL

- IDENTIFIES ALL ENGINEERING DESIGN CHANGE REQUESTS (EDCRs) BY THE ASSIGNMENT OF A UCN; REPRODUCES COPIES FOR CCB REPRESENTATIVES AND RELEASES AN AGENDA FOR CCB MEETINGS
- CHAIRS CCB MEETINGS
- PREPARES OPERATIONS DIRECTIVE THAT REFLECTS ALL ACTION TAKEN BY THE CCB, AND OUTLINES THE DETAILED PLAN FOR EACH DEPARTMENT
- REVIEWS, IDENTIFIES AND RECORDS EFFECTIVITY ON THE ORIGINAL ENGINEERING BEFORE RELEASE TO REPRODUCTION
- PREPARES TRANSMITTALS FOR ALL CONFIGURATION ACCOUNTING DATA ELEMENTS AND REPORTS REQUIREMENTS, AND BUY-OFF CARDS
- PREPARES AND MAINTAINS CONFIGURATION INDEXES AS REQUIRED BY CONTRACT

CERTIFICATION OF COMPLIANCE—(BUY-OFF)



DCN ACCOUNTABILITY BUY-OFF CARD

HARDWARE BUY-OFF:

APPLICABLE FOR EQUIPMENT ITEMS MANUFACTURED LESS PROCESS PLANS (AGE), CHANGES WORKED OUT-OF-POSITION, ETC.

REFER TO CHART "DCN ACCOUNTABILITY REPORT" FOR EXAMPLE OF PRINT-OUT

MANUFACTURING

- CHECK CARD DATA
- INSERT EFFECTIVITY
- CIRCLE INPUT CODE "7"
- STAMP
- PRESENT TO QUALITY

QUALITY (INSPECTION)

- INSPECT ENGINEERING/HARDWARE
- COMPATIBILITY
- STAMP & DATE BUY-OFF CARD
- FORWARD BUY-OFF CARD TO C&DM

PROCESS ACTION BUY-OFF:

APPLICABLE FOR EQUIPMENT ITEMS MANUFACTURED PER PROCESS PLAN, I.E., FOR CHANGES WORKED IN-LINE

MANUFACTURING

- INCORPORATE DCN IN PROCESS PLAN(S)
- DENOTE PLAN(S) AFFECTED ON REVERSE SIDE OF BUY-OFF CARD
- CIRCLE INPUT CODE "9" & PROCESS ACTION CODE "1"
- STAMP & PRESENT TO QUALITY

QUALITY (PLANNING)

- INSPECT DCN/PROCESS PLAN COMPATIBILITY
- STAMP & DATE BUY-OFF CARD
- FORWARD BUY-OFF CARD TO C&DM

CONFIGURATION MANAGEMENT – IMPLEMENTATION

DESIGN/RELIABILITY ENGINEERING

- PREPARES EDCR

 - REASON FOR CHANGE; RECOMMENDED DESIGN CHANGE; PROPOSED EFFECTIVITY

- REPRESENTS ENGINEERING FOR CHANGE PRESENTATION AT CCB

- PREPARES AND SUBMITS DETAILED STATEMENT OF WORK FOR EACH CLASS I CHANGE THAT REQUIRES SUBMITTAL TO THE CUSTOMER CCB

CONFIGURATION MANAGEMENT – IMPLEMENTATION

ENGINEERING DESIGN CHANGE REQUESTS

EDCRs FALL INTO THREE CATEGORIES AND ARE IDENTIFIED BY A CODED UCN (A CONTROL NUMBER IS ASSIGNED TO EVERY EDCR)

- CLASS I CHANGES THAT REQUIRE ECP ACTION (OUT OF SCOPE TO CONTRACT/ SPECIFICATION OR EFFECTING A POST-BASELINE CONTRACT END ITEM) ARE IDENTIFIED WITH THE LETTER "E" (REF. BULLETIN ANA 445 FOR CLASS I DEFINITION)
- CLASS I CHANGES THAT DO NOT REQUIRE ECP ACTION ARE IDENTIFIED WITH THE LETTER "L"
- CLASS II CHANGES ARE IDENTIFIED WITH THE LETTER "Y"

CONFIGURATION MANAGEMENT – IMPLEMENTATION

MANUFACTURING

- REPRESENTS MANUFACTURING ON CCB TO ENSURE THAT ALL CHANGES ARE REVIEWED FOR MANUFACTURING EFFORT AND IMPACT
- PROCESSES AND PRESENTS (THROUGH EDCs) CHANGES GENERATED BY MANUFACTURING LIAISON REQUESTS TO ENGINEERING
- PROCESSES BUY-OFF CARDS THROUGH SYSTEM AND MODIFIES MANUFACTURING PRODUCTION PROCESS PLAN AS DIRECTED BY THE CHANGE
- STAMPS BUY-OFF CARD WHEN CHANGE IS ACCOMPLISHED AND FORWARDS CARD TO QUALITY DEPARTMENT

CONFIGURATION MANAGEMENT – IMPLEMENTATION

PROCUREMENT

- REPRESENTS PROCUREMENT ON THE CCB TO ESTABLISH AVAILABILITY OF REQUIRED MATERIALS
- PRESENTS AVAILABILITY DATES FOR VENDOR HARDWARE AND SOFTWARE, RAW MATERIAL FOR FABRICATION, ETC.
- NEGOTIATES WITH VENDOR FOR DETAILED INFORMATION SUCH AS TURNAROUND DATES, SPECIAL TESTS AND INSPECTIONS

CONFIGURATION MANAGEMENT – IMPLEMENTATION

LOGISTIC SUPPORT

- REPRESENTS LOGISTIC SUPPORT ON THE CCB TO DETERMINE RETROFIT AND SPARES IMPACT CAUSED BY CHANGES
- PREPARES RETROFIT KIT AND SPARES PLAN FOR THE CCB BASED ON AVAILABILITY, EFFECTIVITY AND SCHEDULE
- PREPARES MODIFICATION INSTRUCTION AND PARTS LIST FOR EACH RETROFIT CHANGE
- RELEASES SPARES AND KIT STATUS INFORMATION TO CONFIGURATION CONTROL FOR INCORPORATION IN THE CONFIGURATION INDEX AND CHANGE STATUS ACCOUNTING REPORTS

CONFIGURATION MANAGEMENT – IMPLEMENTATION

PROGRAM PLANNING

- REPRESENTS PLANNING ON CCB TO ENSURE THAT SCHEDULING, IMPACT, ETC., ARE CONSIDERED ON ALL CHANGES
- PREPARES AND RELEASES INTERNAL SCHEDULES FOR PLAN ACCOMPLISHMENT (INCLUDING EFFECTIVITIES, CUSTOMER APPROVAL IF REQUIRED, ENGINEERING RELEASE DATES, ETC.)

CONFIGURATION MANAGEMENT - IMPLEMENTATION

FINANCE

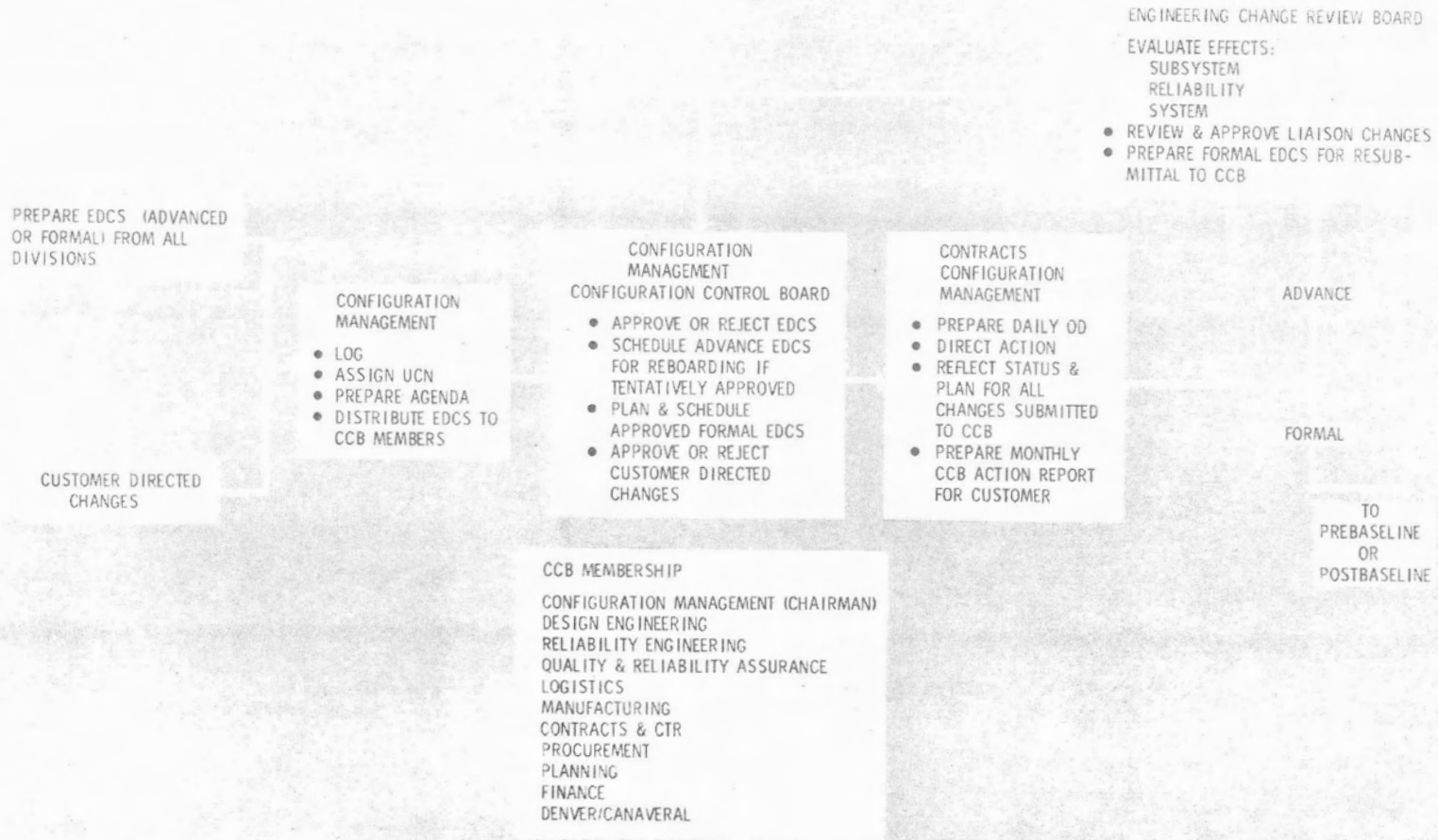
- REPRESENTS FINANCE ON CCB TO ASCERTAIN COST OF CHANGES
- PREPARES BUDGETARY OR FIRM COST FOR THE IMPLEMENTATION OF CHANGES AS REQUIRED FOR ECP SUBMITTAL AND INTERNAL MANAGEMENT CONTROL
- PREPARES PERIODIC FINANCE STATUS REPORTS FOR PROGRAM DIRECTOR WHICH REFLECT COSTS OF CHANGES PROCESSED BY THE CCB; THIS REPORT REFLECTS SCOPE, EXPENDITURES, CONTRACT COVERAGE, ETC.

CONFIGURATION MANAGEMENT – MAJOR OPERATIONS

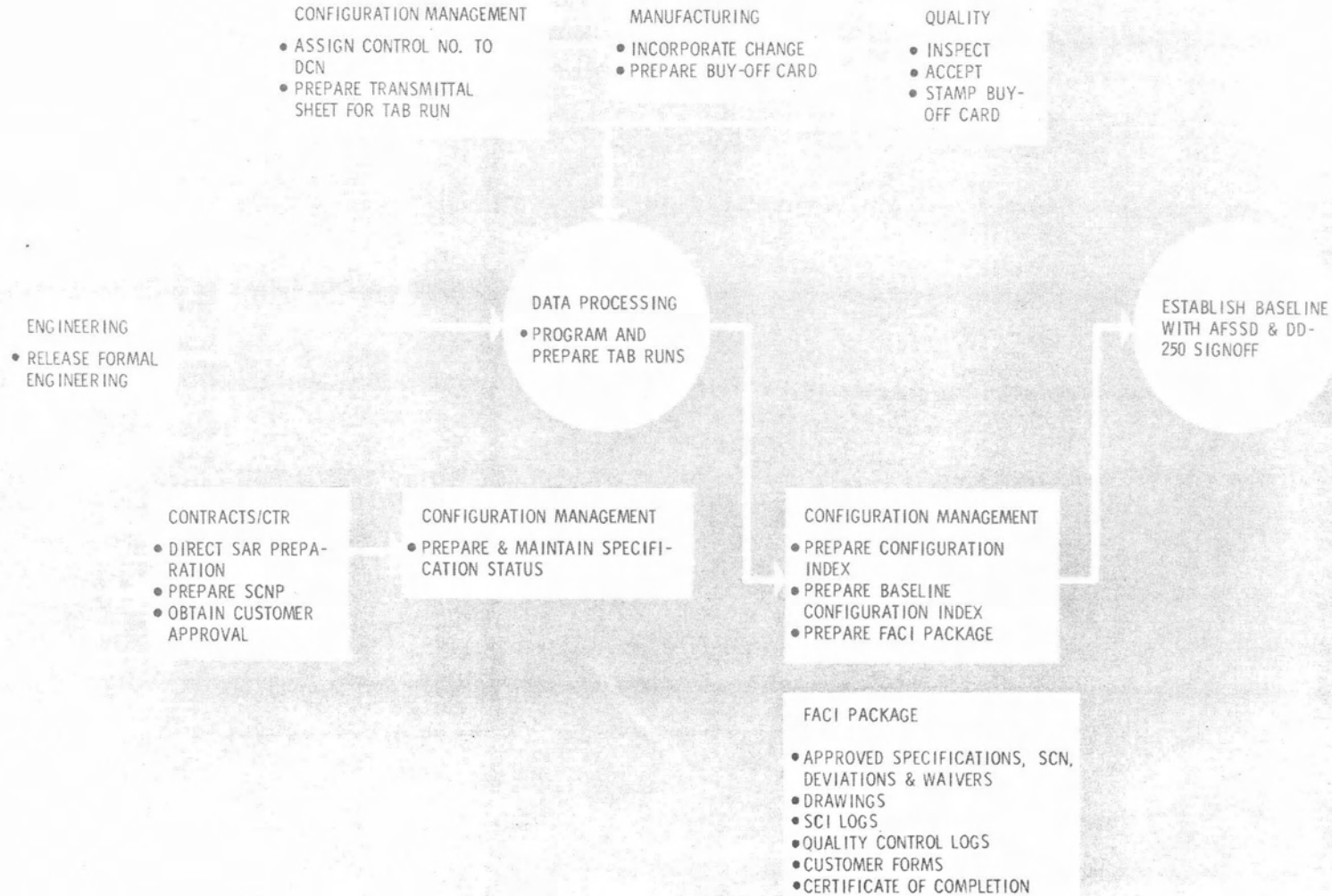
IN ADDITION TO OPERATION OF THE CCB, THERE ARE OTHER AREAS OF CONFIGURATION CONTROL REQUIRED ON A PROGRAM:

- ESTABLISHMENT OF A MECHANIZED SYSTEM WHICH REFLECTS THE SUBMITTAL DATE OF ALL TYPES I, II AND III DOCUMENTS TO THE CUSTOMER (SPECIFICATIONS, ENGINEERING DOCUMENTS, ETC.)
- INSTITUTION OF INTERNAL TRAINING PROGRAMS TO EDUCATE MANAGEMENT AND WORKING PERSONNEL ON THE OBJECTIVES AND OPERATION OF CONFIGURATION MANAGEMENT
- PROGRAMMING OF A MECHANIZED STATUS ACCOUNTING AND CONTROL REPORTING SYSTEM FOR CRITICAL TEST TOOLS AND TEST PROCEDURES
- RESPONSIBILITY FOR ENGINEERING RELEASE
- ESTABLISHMENT OF THE CAPABILITY TO RELEASE MANY DIFFERENT TYPES OF MECHANIZED REPORTS
- ESTABLISHMENT OF A SYSTEM TO CONTROL INTERFACE WITH ASSOCIATE CONTRACTORS (HARDWARE, DRAWINGS AND SPECIFICATIONS)

CONFIGURATION MANAGEMENT CHANGE CONTROL

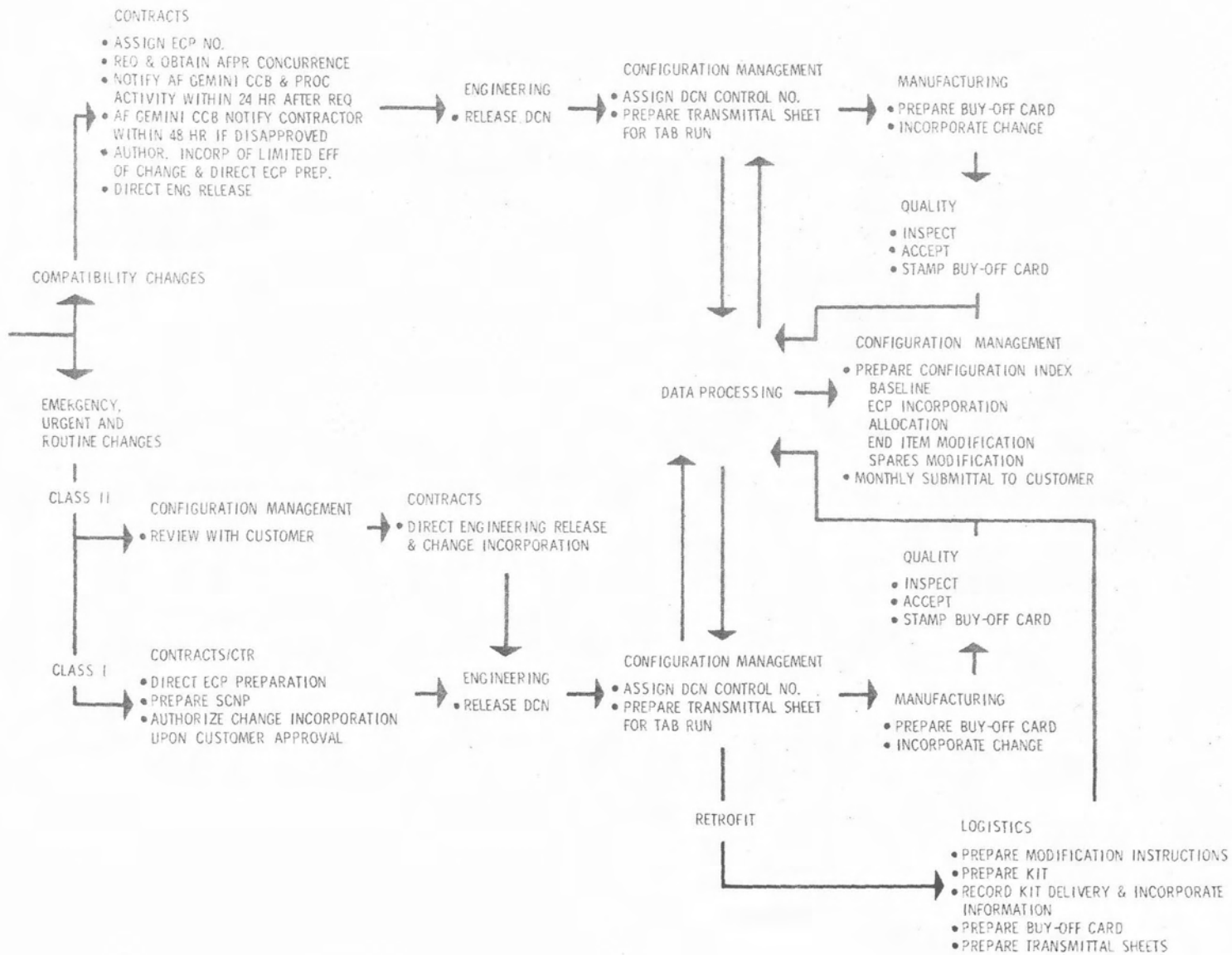


PREBASELINE



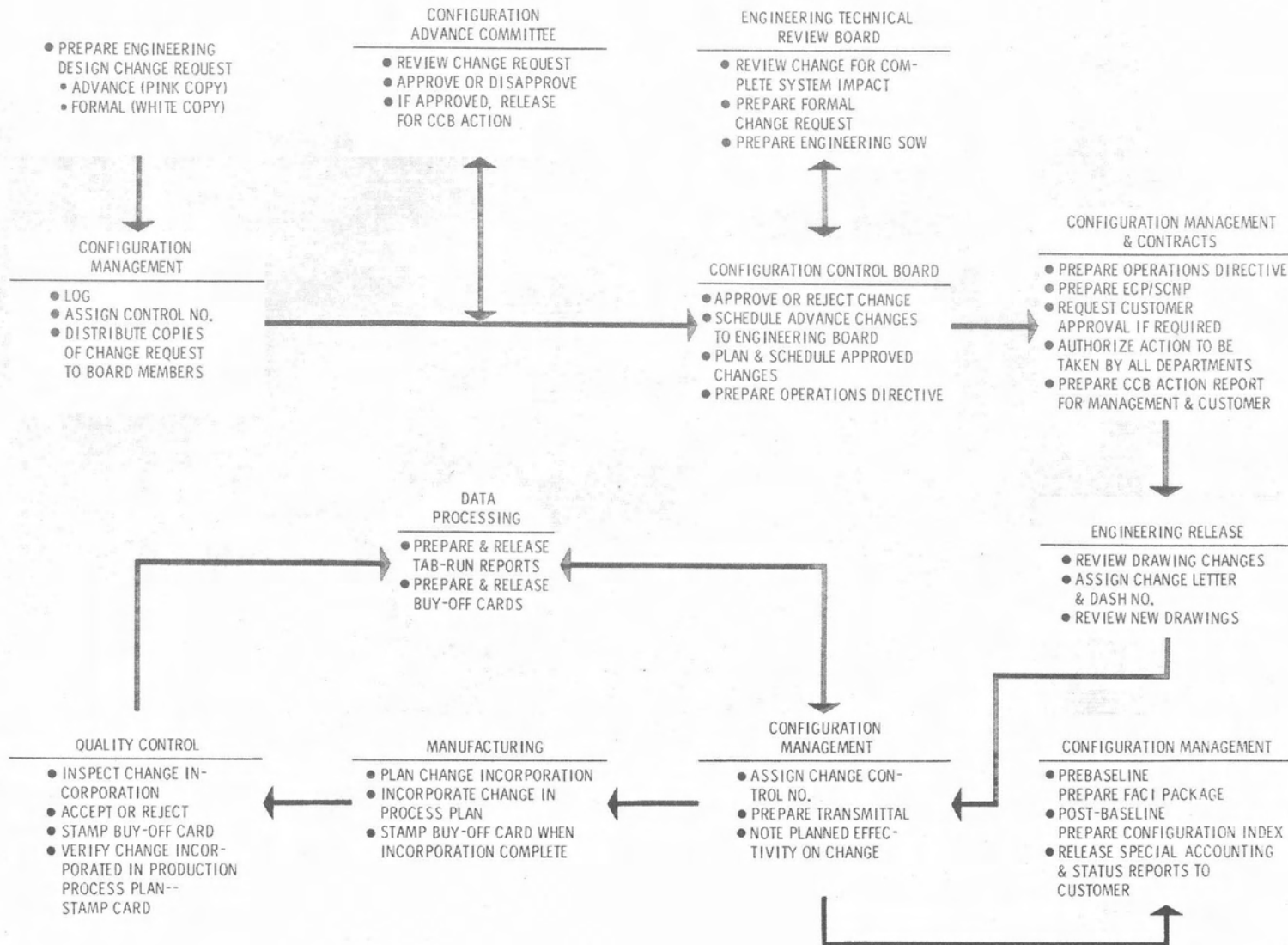
ff

POSTBASELINE



45

CONFIGURATION MANAGEMENT – CHANGE REVIEW & CONTROL



DCN ACCOUNTABILITY REPORT

FOR OPEN DCN REPORTS (PROD'N & RETRO MOD) AFFECTED CONTROL POINT PRINTS HERE. FOR ALL OTHER REPORTS, AFFECTED CONTROL POINT PRINTS IN THE 'REMARKS' COLUMN. LETTER Z INDICATES RETROFIT/ MODIFIC'N.

FOR OPEN DCN REPORTS (PRODN) LOT/USAGE PRINTS HERE. FOR RETRO/ MOD THE MILE NUMBER PRINTS HERE. FOR OTHER THAN OPEN REPORTS THESE DATA PRINT IN REMARKS.

DATA PROCESSING REPORT NUMBER

PROGRAM NAME

MARTIN COMPANY
BALTIMORE

DCN ACCOUNTABILITY

MASTER DATA										COMPLETION DATA											
REV	DCN CONTROL NUMBER	POSITION	LOCATION	DRAWING PART NUMBER	DASH NO	SHEET	CHANGE	ENG ITEM CONTROL POINT	E C # NUMBER	UNIFORM CONTROL NUMBER	P. T. NO.	FIRST SHIP ARTICLE	LAST SHIP ARTICLE	DATE	FIRST SHIP ARTICLE	LAST SHIP ARTICLE	O. C. STAMP	CERT. DATE	PROGRAM CODE	REMARKS	

INPUT CODES SPECIFY THE SOURCE AND TYPE OF ORIGINAL ENTRY DATA (SEE LEGEND AT BOTTOM OF PAGE).

DCN CONTROL NUMBER INDICATES YEAR, DAY, PLACE AND SEQUENCE NUMBER. POSITION INDICATES CONTROL POINT. LOCATION INDICATES CONTROL POINT. DRAWING PART NUMBER INDICATES DRAWING NUMBER AND SHEET. DASH NO INDICATES DASH NUMBER. SHEET INDICATES SHEET NUMBER. CHANGE INDICATES CHANGE NUMBER. ENG ITEM CONTROL POINT INDICATES CONTROL POINT. E C # NUMBER INDICATES ENGINEERING CHECK NUMBER. UNIFORM CONTROL NUMBER INDICATES UNIFORM CONTROL NUMBER. P. T. NO. INDICATES PART NUMBER. FIRST SHIP ARTICLE INDICATES FIRST SHIP ARTICLE. LAST SHIP ARTICLE INDICATES LAST SHIP ARTICLE. DATE INDICATES DATE. FIRST SHIP ARTICLE INDICATES FIRST SHIP ARTICLE. LAST SHIP ARTICLE INDICATES LAST SHIP ARTICLE. O. C. STAMP INDICATES O. C. STAMP. CERT. DATE INDICATES CERT. DATE. PROGRAM CODE INDICATES PROGRAM CODE. REMARKS INDICATES REMARKS.

FOR PRODUCTION DCN'S, INDICATES THE DRAWING OR PART NUMBER TO WHICH THE DCN IS APPLIED. FOR RETRO/ MOD, INDICATES THE PART NUMBER AFTER THE MOD IS INCORPORATED.

INDICATES SHEET NUMBER OF DRAWING AFFECTED BY REFERENCED DCN (NOT USED ON RETRO/ MOD).

INDICATES CHANGE LETTER OF THE DCN FOR THE REFERENCED DRAWING NUMBER.

RELATIONSHIP BETWEEN CONTROL POINT, IF LETTER PRECEDES, IT INDICATES A SPLIT DELIVERABLE. IF LETTER FOLLOWED, IT INDICATES A SPLIT DELIVERABLE. LETTERS "B" DESIGNATE BOM, "C" A DESIGN, "D" DRAWING, "E" ENGINEERING, "F" FINISH, "G" GENERAL, "H" HOLDING, "I" INSPECTION, "J" JETTING, "K" KETCHING, "L" LAYOUT, "M" MATERIAL, "N" NICKING, "O" OILING, "P" PACKAGING, "Q" QUALITY, "R" REPAIR, "S" SHIPPING, "T" TOOLING, "U" UTILITY, "V" VENDOR, "W" WORKING, "X" X-RAY, "Y" YIELD, "Z" ZONE.

INDICATES EAP INCORPORATED IN THE ENG ITEM AT DELIVERY, NOT APPLICABLE PRIOR TO BASE LINE.

ENGINEERING CHECK NUMBER INCLUDES ALL DCN'S FOR OVERALL CHANGE ACTION. PREFIX LETTERS INDICATE THE FOLLOWING:
 1. BASIC ENGINEERING RELEASE
 2. CLASS I CHANGE
 3. CLASS II CHANGE
 4. E. K. P.

P. E. NO. INDICATES PROGRESS TICKET NUMBER AND IS AN INTEGRAL PART OF THE UNIFORM CONTROL NUMBER. FOR RETRO/ MOD, THE MOD, INSTR. INT. NO. IS THE UNIFORM CONTROL NUMBER.

FIRST SHIP ARTICLE, LAST SHIP ARTICLE INDICATES THE EFFECTIVITY. THAT IS, THE RANGE OF LINE ITEM TO WHICH THE DCN IS APPLIED. FOR PRODUCTION (PRODN) AND RETRO/ MOD, EACH COLUMN (FIRST, LAST SHIP ARTICLE) INDICATES THE LAST THREE DIGITS OF THE SERIAL NO. OF THE UNIT TO BE MOD.

INDICATES THE DATE (MONTH, DAY & LAST DIGIT OF YEAR, IN THAT ORDER) WHEN THE QUALITY INSPECTOR STAMPED APPROVAL OF THE DISPOSITION. THIS CODE FURTHER DEFINES THE DISPOSITION SHOWN IN THE "ACTION" COLUMN. IF SUCH ACTION CODE IS AN "R" OR "Y", SEE LEGEND AT BOTTOM OF PAGE.

THE TWO DIGIT CODES IN THIS COLUMN FOR TITAN PROGRAM ARE DEFINED IN SECTION B OF DRAWER'S PUBLICATION, "CENTRAL CONTROL CONFIGURATION MANAGEMENT" THEY ARE NOT LISTED HERE, BECAUSE THEY ARE FREQUENTLY UPDATED.

"T" TAKEN CARE OF. INDICATES QUALITY SIGNATURE BOX OFF OF DCN WHEN IT IS RELEASED.

THIS THREE DIGIT CODE (SHOWN ON RETRO/ MOD ONLY) INDICATES ENGINEERING CHECK NUMBER.

ONLY INDICATES THE DATE (MONTH, DAY & LAST DIGIT OF YEAR) BY WHICH MOD MUST BE ACCOMPLISHED IN THAT ORDER.

THE WORD "TAG" FOLLOWED BY A ONE DIGIT CODE (SHOWN ON "UNPROCESSED ACTION" LIST ONLY) INDICATES THE REASON THE TRANSACTION WAS REJECTED. "1" INDICATES THE TRANSACTION WAS REJECTED BECAUSE OF A MISSING TAG. FOR DETAILED EXPLANATION OF TAGS, SEE SECTION C OF THIS BOOKLET.

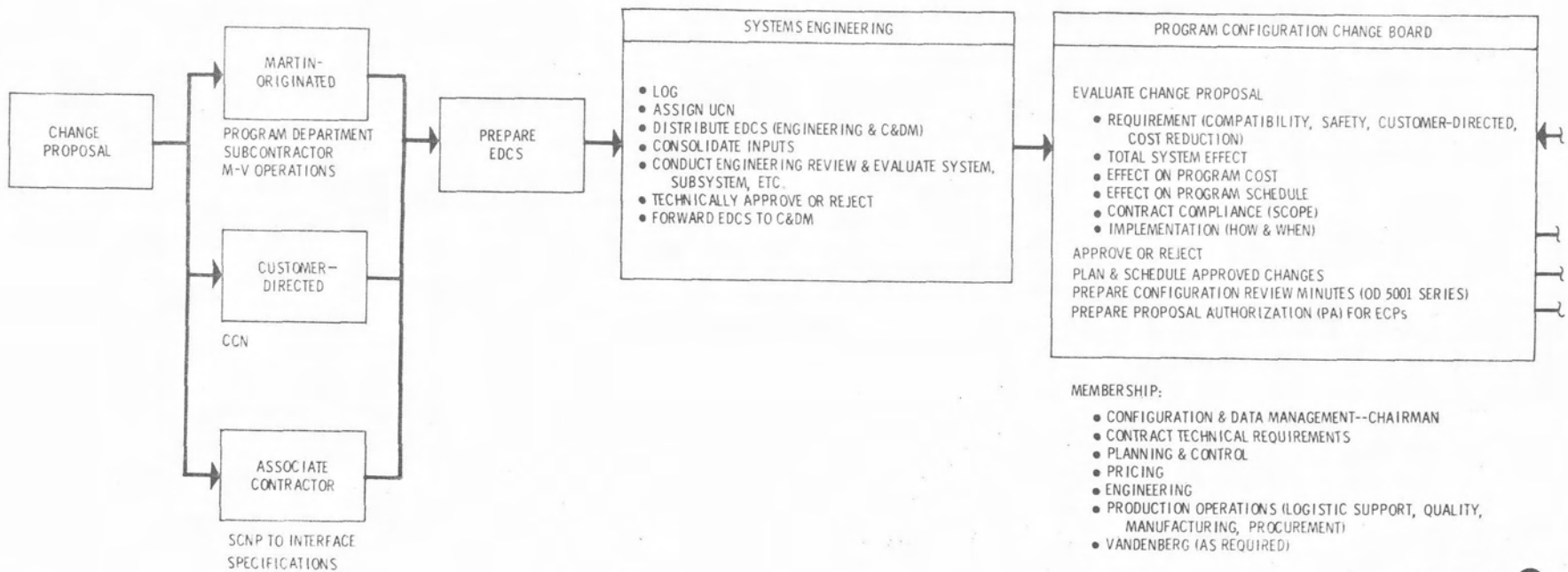
AFFECTED CONTROL POINT. PRINTS IN THIS AREA FOR ALL DCN REPORTS AFFECTED CONTROL POINTS. FOR RETRO/ MOD, THE CONTROL POINT IS PRINTED ON THIS PAGE, SINCE MORE THAN ONE AFFECTED CONTROL POINT MAY PRINT ON EACH PAGE. A PREFIX LETTER Z INDICATES RETROFIT/ MODIFICATION REPORTS.

LOT/USAGE. PRINTS IN THIS AREA FOR ALL DCN REPORTS OTHER THAN THE OPEN DCN REPORTS (WHICH PRINT AT TOP CENTER OF THIS PAGE), SINCE MORE THAN ONE LOT/USAGE MAY PRINT ON EACH PAGE. THIS COLUMN INDICATES THE MESSAGE NUMBERS FOR RETRO/ MOD REPORTS.

FOR DETAILED EXPLANATION OF PROCESS CODES, SEE SECTION IV B 3 OF THIS BOOKLET.

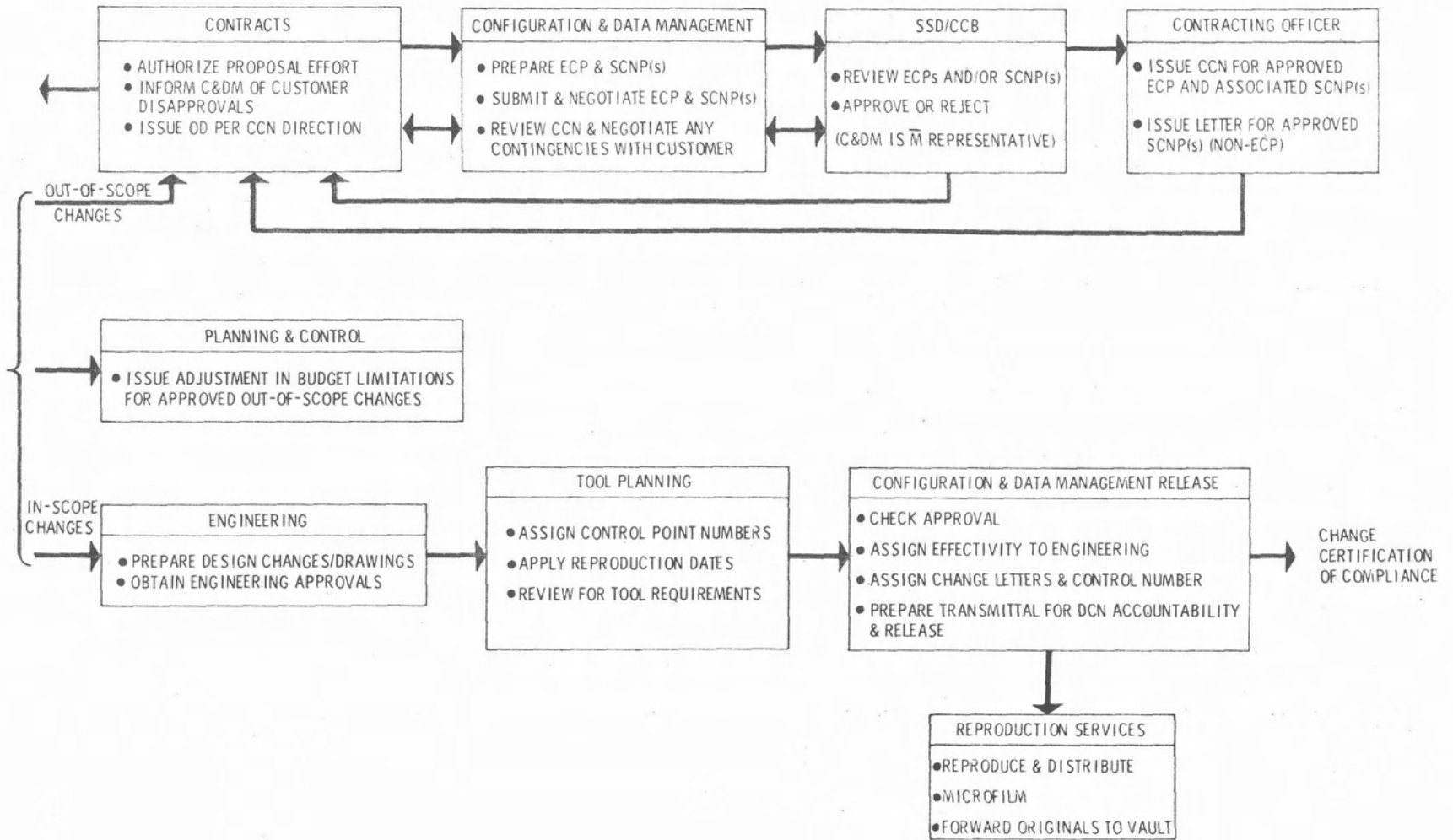
17

CHANGE CONTROL FLOW



48

CHANGE CONTROL FLOW (CONT)



49

DCN ACCOUNTABILITY																		
539-488		TITLE		PRIME STATUS REPORT				SEQ		DWG-SHT-CHG		08-20-65		PAGE 1				
T	CONTROL	P	DWG PART	DASH	SH	CHG	END	UNIFORM	P. T.	1ST	LAST	S	QC	CERT	REMARKS	AFFECTED	LOT	
R	NO.	O	NO.	NO.	NO	LTR	ITEM	CONTROL	NO.	ARTICLE		E	STAMP	DATE	P	V	CONTROL	OR
		S					C/P	NO.				C			R	T	POINT	USAGE
0	0000000	6	4555555555	6666	66	666	33444	444444	2233333	333	222	2	2				01111111	111
1	2345678	9	90123456789	0123	45	678	89012	345678	8901234	567	012	345	6	7			90123456	789
1	5194049	B	458A2340442	-001	01		2000		B2340	003	001	004		BASIC DWG	DEV		L2340440	SV
1	5211067	P	458A2340442	-001	01	A	2000		D00014	007	001	004		7 0000	09315		L2340000	SV
1	5211067	I	458A2340442		01	A	2000		D00014	007	001	004		DWG-INCORP			L2340000	SV
1	5218002	N	458A2340442		01	001	2000		DCA		001	004		CERT NOT REQD			L2340000	SV
1	5222014	P	458A2340442	-001	01		2000				001	004		9 Cw00	10325	F0019	L2340000	SV

TRANSMITTAL COLUMN NOS.

BASIC DRAWING RELEASE

DCN RELEASE

DRAWING CHANGE INCORPORATION LEVEL

DCA RELEASE

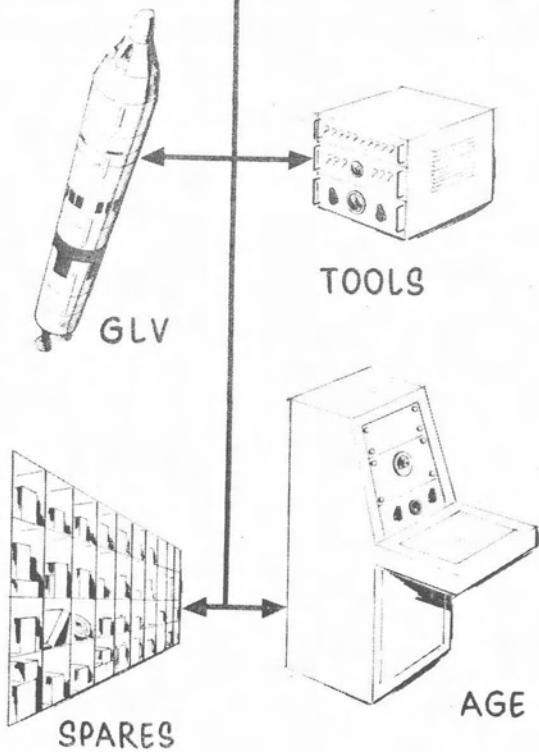
FREEZE ORDER RELEASE

JOB CODE		PRIME ENGINEERING RELEASE RECORD		PAGE NO. 003	
DATE 08/23/65		BASIC DWGS			
DWG NO.	DRAWING TITLE	DWG SIZE	CE I SPEC		
458A2340442	PRINTED WIRING BOARD GAIN CHANGE SWITCH	C	1104		



26

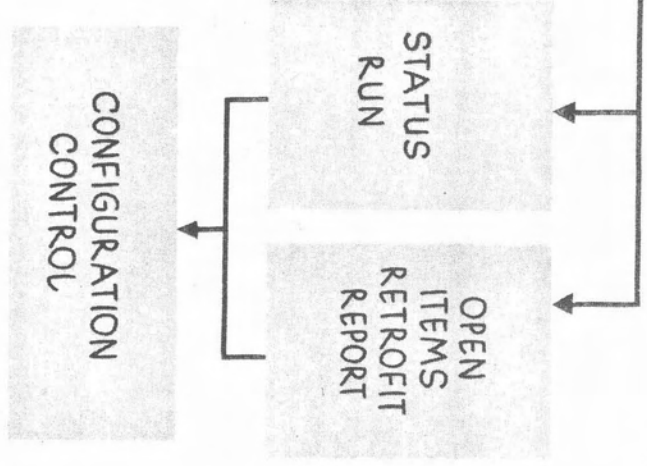
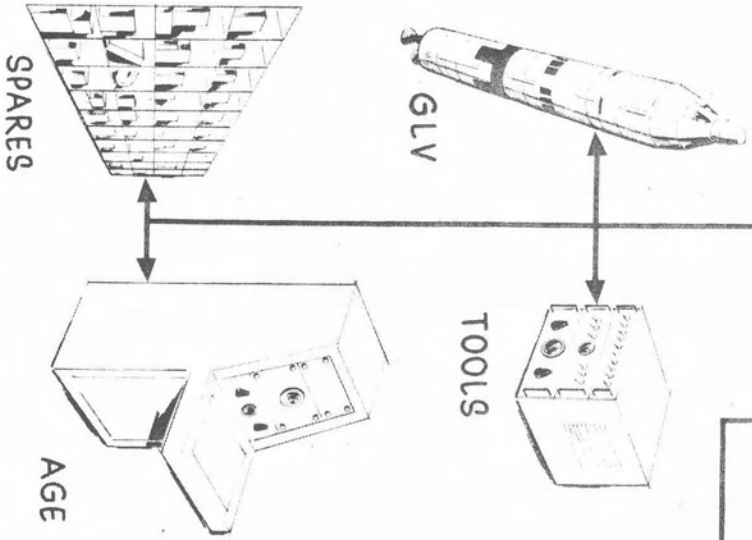
UCN _____



MODIFICATION

- ## OBJECTIVES
- COMPATIBILITY IN DIRECTED CHANGE
- AIRBORNE
 - AGE
 - SPARES
 - TOOLS

UCN



OBJECTIVES

- COMPATIBILITY IN DIRECTED CHANGE
- AIRBORNE
- AGE
- SPARES
- TOOLS

MANAGEMENT

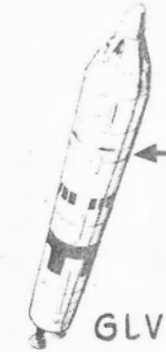
- SITE WORK
- CHANGE BOARD AND CONFIGURATION CONTROL

MODIFICATION

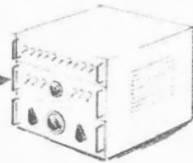
MANAGEMENT

UCN

SITES



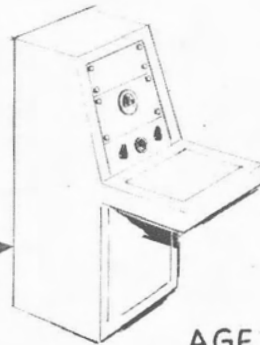
GLV



TOOLS



SPARES



AGE

QC BUY-OFF
CERTIFICATION

STATUS
RUN

OPEN
ITEMS
RETROFIT
REPORT

CONFIGURATION
CONTROL

OBJECTIVES

COMPATIBILITY IN
DIRECTED CHANGE

- AIRBORNE
- AGE
- SPARES
- TOOLS

MANAGEMENT

- SITE WORK
- CHANGE BOARD
AND CONFIGURATION
CONTROL

POSITIVE CONTROL

- SITE MANAGER
- MODIFICATION MANAGER
- INPUTS
- OUTPUTS

MODIFICATION MANAGEMENT & CONTROL

RETROFIT ACCOUNTABILITY REPORT

ATTACHMENT I OP 88 832

24-7136-00
054



RETROFIT ACCOUNTABILITY

JOB CODE: 540-405 TITLE: WEEKLY STATUS DATE: 10-19-64 PAGE: 0006

CONTROL NO. ASSIGNED BY ORIGINAL TRANSMITTER

1. CONTROL NO. ASSIGNED BY ORIGINAL TRANSMITTER

2. CONTROL NO. ASSIGNED BY ORIGINAL TRANSMITTER

3. CONTROL NO. ASSIGNED BY ORIGINAL TRANSMITTER

4. CONTROL NO. ASSIGNED BY ORIGINAL TRANSMITTER

5. CONTROL NO. ASSIGNED BY ORIGINAL TRANSMITTER

6. CONTROL NO. ASSIGNED BY ORIGINAL TRANSMITTER

7. CONTROL NO. ASSIGNED BY ORIGINAL TRANSMITTER

8. CONTROL NO. ASSIGNED BY ORIGINAL TRANSMITTER

9. CONTROL NO. ASSIGNED BY ORIGINAL TRANSMITTER

10. CONTROL NO. ASSIGNED BY ORIGINAL TRANSMITTER

LOCATION DATE

1. LOCATION DATE

2. LOCATION DATE

3. LOCATION DATE

4. LOCATION DATE

5. LOCATION DATE

6. LOCATION DATE

7. LOCATION DATE

8. LOCATION DATE

9. LOCATION DATE

10. LOCATION DATE

MAJOR SYSTEM CODES

1. MAJOR SYSTEM CODES

2. MAJOR SYSTEM CODES

3. MAJOR SYSTEM CODES

4. MAJOR SYSTEM CODES

5. MAJOR SYSTEM CODES

6. MAJOR SYSTEM CODES

7. MAJOR SYSTEM CODES

8. MAJOR SYSTEM CODES

9. MAJOR SYSTEM CODES

10. MAJOR SYSTEM CODES

MINOR SYSTEM CODES

1. MINOR SYSTEM CODES

2. MINOR SYSTEM CODES

3. MINOR SYSTEM CODES

4. MINOR SYSTEM CODES

5. MINOR SYSTEM CODES

6. MINOR SYSTEM CODES

7. MINOR SYSTEM CODES

8. MINOR SYSTEM CODES

9. MINOR SYSTEM CODES

10. MINOR SYSTEM CODES

PART NO.

1. PART NO.

2. PART NO.

3. PART NO.

4. PART NO.

5. PART NO.

6. PART NO.

7. PART NO.

8. PART NO.

9. PART NO.

10. PART NO.

TITLE OF CHANGE

1. TITLE OF CHANGE

2. TITLE OF CHANGE

3. TITLE OF CHANGE

4. TITLE OF CHANGE

5. TITLE OF CHANGE

6. TITLE OF CHANGE

7. TITLE OF CHANGE

8. TITLE OF CHANGE

9. TITLE OF CHANGE

10. TITLE OF CHANGE

SIA OR DESIGN NO.

1. SIA OR DESIGN NO.

2. SIA OR DESIGN NO.

3. SIA OR DESIGN NO.

4. SIA OR DESIGN NO.

5. SIA OR DESIGN NO.

6. SIA OR DESIGN NO.

7. SIA OR DESIGN NO.

8. SIA OR DESIGN NO.

9. SIA OR DESIGN NO.

10. SIA OR DESIGN NO.

RIP ENTRY

1. RIP ENTRY

2. RIP ENTRY

3. RIP ENTRY

4. RIP ENTRY

5. RIP ENTRY

6. RIP ENTRY

7. RIP ENTRY

8. RIP ENTRY

9. RIP ENTRY

10. RIP ENTRY

MATERIAL

1. MATERIAL

2. MATERIAL

3. MATERIAL

4. MATERIAL

5. MATERIAL

6. MATERIAL

7. MATERIAL

8. MATERIAL

9. MATERIAL

10. MATERIAL

CONTROL NUMBER	SYS	PART NUMBER	SER NO	END TSM	UNIFORM CONTROL	EFF	ECP	CCN NO & DATE	OD G/A	POINT OF INCORP CODE	ENGR REL DATE	KIT ON DOCK DATE	MARS NO	ISSUE DATE	START DATE	COMP DATE	BUY OFF
4280720	V II	424-7560002-099	004	1000	E02928	002	04 04	16 0923	0924	SSF	0923	FAX	1025011		1001	1001	022 1011
PCM ENCODER COVER PLATE MODIFICATION																	
4280727	II	424-1000001-049	004	1000	E02928	004	04 04	16 1009	1012	SSF	0923	FAX	1025012		1013	1014	1014
PCM ENCODER COVER PLATE MODIFICATION																	
4288700	V E	PS74600002-017		1000	E02929	001	04 04	16 1009	1012	SSF	0923	FAX			1013	1014	1014
REVISE WIRING IDENT MDS PRESSURE XDUCCER																	
4288701	V E	PS74600002-017		1000	E02929	001	04 04	16 1009	1010	SSF	0926	FAX					
REVISE WIRING IDENT MDS PRESSURE XDUCCER																	
4282700	V P S	424-3412000-059		3400	E89554	010	04 15	320 1007	1008	SSF	1002	FAX					
CHANGE MDS TO MONITOR FUEL INJECTOR PRES																	
4282701	V E E	424-3412000-059		3400	E89554	010	04 15	320 1007	1008	SSF	1002	FAX					
CHANGE MDS TO MONITOR FUEL INJECTOR PRES																	
4280702	V P E	424-7560002-099		1000	E89554	018	04 04	320 1007	1008	SSF	1002	FAX					
CHANGE MDS TO MONITOR FUEL INJECTOR PRES																	
4280703	V P E	424-1000001-049		1000	E89554	023	04 04	320 1007	1008	SSF	1002	FAX					
CHANGE MDS TO MONITOR FUEL INJECTOR PRES																	
4282704	V P E	424-3410000-109		3400	E89554	026	04 15	320 1007	1008	SSF	1002	FAX					
CHANGE MDS TO MONITOR FUEL INJECTOR PRES																	
4282705	V P E	424-3400000-119		3400	E89554	027	04 15	320 1007	1008	SSF	1002	FAX					
CHANGE MDS TO MONITOR FUEL INJECTOR PRES																	
4282706	V E E	424-3400000-119		3400	E89554	027	04 15	320 1007	1008	SSF	1002	FAX					
CHANGE MDS TO MONITOR FUEL INJECTOR PRES																	
4290729	V F	424-560001-099		1000	E89991	003	04 04	320 0913	0918	SHIP	0822	FAX			1201	1203	
ADAPTER PACKAGE TRANSISTOR RECOVERY																	

BUY OFF STAMP

1. BUY OFF STAMP

2. BUY OFF STAMP

3. BUY OFF STAMP

4. BUY OFF STAMP

5. BUY OFF STAMP

6. BUY OFF STAMP

7. BUY OFF STAMP

8. BUY OFF STAMP

9. BUY OFF STAMP

10. BUY OFF STAMP

MODIFICATION START & FINISH DATE

1. MODIFICATION START & FINISH DATE

2. MODIFICATION START & FINISH DATE

3. MODIFICATION START & FINISH DATE

4. MODIFICATION START & FINISH DATE

5. MODIFICATION START & FINISH DATE

6. MODIFICATION START & FINISH DATE

7. MODIFICATION START & FINISH DATE

8. MODIFICATION START & FINISH DATE

9. MODIFICATION START & FINISH DATE

10. MODIFICATION START & FINISH DATE

MARK NO. & ISSUE DATE

1. MARK NO. & ISSUE DATE

2. MARK NO. & ISSUE DATE

3. MARK NO. & ISSUE DATE

4. MARK NO. & ISSUE DATE

5. MARK NO. & ISSUE DATE

6. MARK NO. & ISSUE DATE

7. MARK NO. & ISSUE DATE

8. MARK NO. & ISSUE DATE

9. MARK NO. & ISSUE DATE

10. MARK NO. & ISSUE DATE

TEST REQUIREMENTS

1. TEST REQUIREMENTS

2. TEST REQUIREMENTS

3. TEST REQUIREMENTS

4. TEST REQUIREMENTS

5. TEST REQUIREMENTS

6. TEST REQUIREMENTS

7. TEST REQUIREMENTS

8. TEST REQUIREMENTS

9. TEST REQUIREMENTS

10. TEST REQUIREMENTS

DATE OF TEST

1. DATE OF TEST

2. DATE OF TEST

3. DATE OF TEST

4. DATE OF TEST

5. DATE OF TEST

6. DATE OF TEST

7. DATE OF TEST

8. DATE OF TEST

9. DATE OF TEST

10. DATE OF TEST

TEST RELEASE DATES

1. TEST RELEASE DATES

2. TEST RELEASE DATES

3. TEST RELEASE DATES

4. TEST RELEASE DATES

5. TEST RELEASE DATES

6. TEST RELEASE DATES

7. TEST RELEASE DATES

8. TEST RELEASE DATES

9. TEST RELEASE DATES

10. TEST RELEASE DATES

END ITEM CONTROL POINT

1. END ITEM CONTROL POINT

2. END ITEM CONTROL POINT

3. END ITEM CONTROL POINT

4. END ITEM CONTROL POINT

5. END ITEM CONTROL POINT

6. END ITEM CONTROL POINT

7. END ITEM CONTROL POINT

8. END ITEM CONTROL POINT

9. END ITEM CONTROL POINT

10. END ITEM CONTROL POINT

EFFECTIVITY OF CHANGE

1. EFFECTIVITY OF CHANGE

2. EFFECTIVITY OF CHANGE

3. EFFECTIVITY OF CHANGE

4. EFFECTIVITY OF CHANGE

5. EFFECTIVITY OF CHANGE

6. EFFECTIVITY OF CHANGE

7. EFFECTIVITY OF CHANGE

8. EFFECTIVITY OF CHANGE

9. EFFECTIVITY OF CHANGE

10. EFFECTIVITY OF CHANGE

CON DATA

1. CON DATA

2. CON DATA

3. CON DATA

4. CON DATA

5. CON DATA

6. CON DATA

7. CON DATA

8. CON DATA

9. CON DATA

10. CON DATA

POINT OF INCORPORATION CODES

1. POINT OF INCORPORATION CODES

2. POINT OF INCORPORATION CODES

3. POINT OF INCORPORATION CODES

4. POINT OF INCORPORATION CODES

5. POINT OF INCORPORATION CODES

6. POINT OF INCORPORATION CODES

7. POINT OF INCORPORATION CODES

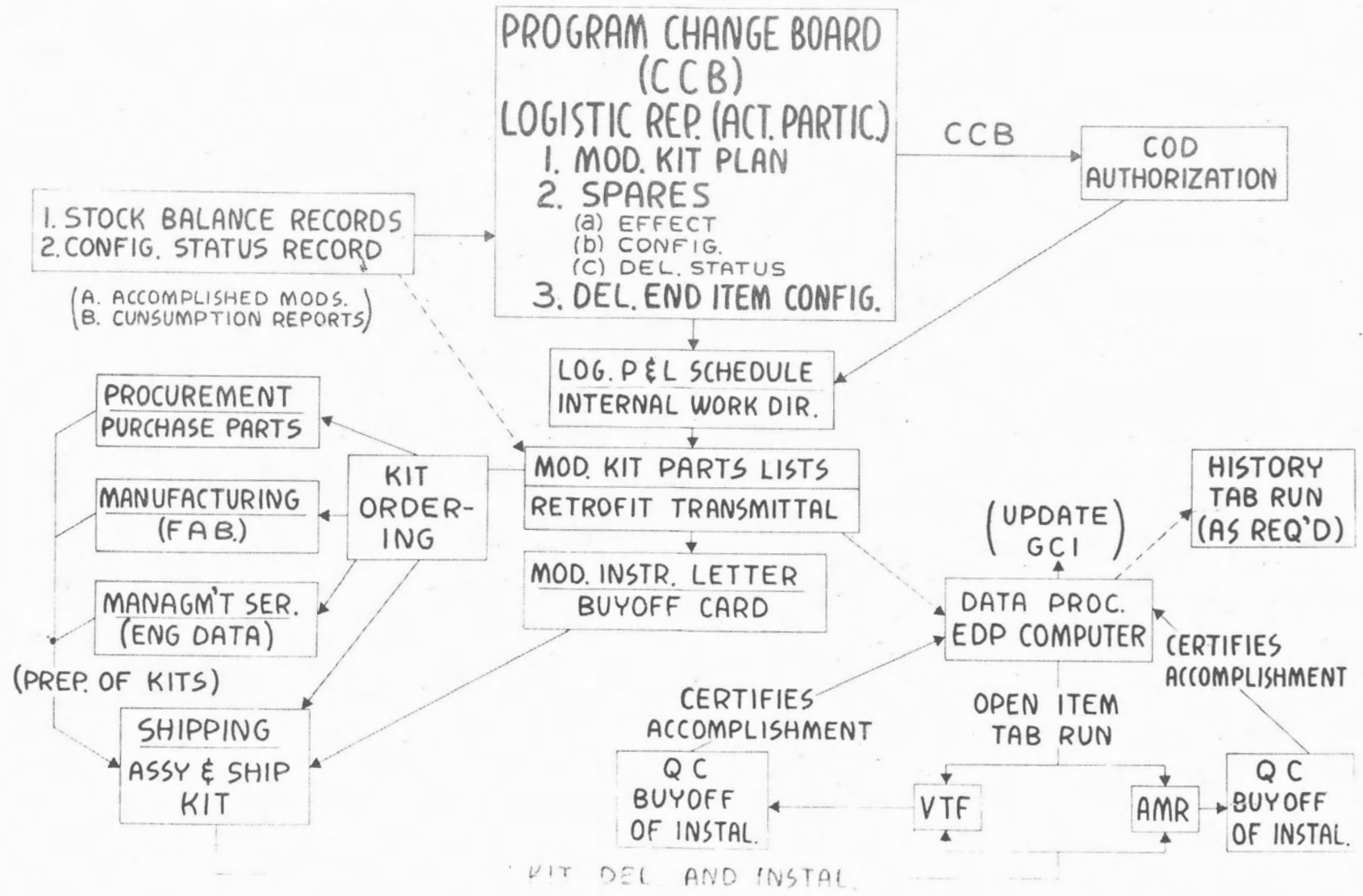
8. POINT OF INCORPORATION CODES

9. POINT OF INCORPORATION CODES

10. POINT OF INCORPORATION CODES

75

MODIFICATION MANAGEMENT (END ITEMS & SPARES & TOOLS)



26

KIT DEL. AND INSTAL.

RETROFIT ACCOUNTABILITY REPORT

INPUT RESPONSIBILITIES

ATTACHMENT II OP-88 832

06-11-86
6-4



RETROFIT ACCOUNTABILITY

JOB CODE 540-405

TITLE WEEKLY STATUS

DATE: 10-19-84

PAGE 0006

CONTROL NO. ASSIGNED BY ORIGINAL TRANSMITTER
ORGANIZATION MAKING INITIAL ENTRY ASSIGNS THE CONTROL NUMBER

LOCATION CODE
ETR-M-B CONF MGMT
ALL OTHER M-B LOGISTICS

MAJOR SYSTEM CODES
VTF-M-B LOGISTICS
ETR-M-B CONF MGMT

MINOR SYSTEM CODES
VTF-M-B LOGISTICS
ETR-M-B CONF MGMT

PART NO.
VTF-M-B LOGISTICS
ETR-M-B LOGISTICS

TITLE OF CHANGE
VTF-M-B LOGISTICS
ETR-M-B CONF MGMT

CHANGE ISSUE NO.
VTF-M-B LOGISTICS
ETR-M-B LOGISTICS

REP ENTRY
VTF-M-B LOGISTICS
APP. M-T APPROVAL

OFFICE NO.
VTF-M-B LOGISTICS
ETR-M-B CONF MGMT

CONTROL NUMBER	SYS	PART NUMBER DASH	SER NO	END ITEM CONTROL POINT	UNIFORM CONTROL NO SUP ST	EFF	ECP	CCN NO & DATE	OD G/A	POINT OF INCORP CODE	ENGR REL DATE	KIT ON DOCK DATE	ISSUE DATE	MARS NO.	ISSUE DATE	START DATE	COMPL DATE	BUY OFF STAMP DATE	BUY OFF DATE
4280726	V II	424-7560002-099-099	004	1000	E02928	002	04 04	406	* 16 0923 0924	SSF	0923	FAX	1025011		1001	1001	322	1014	
PCM ENCODER COVER PLATE MODIFICATION																			
4280727	V II	424-1000001-049-049	004	1000	E02928	004	04 04	406	* 16 1005 1006	SSF	0923	FAX	1025012		1001	1001	322	1014	
PCM ENCODER COVER PLATE MODIFICATION																			
4288700	V EE	PS746000002-017-013		1000	E02929	001	04 04	413	\$ 1009 1010	-SSF	0926	FAX			1013	1014	1014		
REVISE WIRING IDENT MDS PRESSURE XDUCER																			
4288701	V EE	PS746000002-017-013		1000	E02929	001	04 04	413	\$ 1009 1010	-SSF	0926	FAX			1013	1014	1014		
REVISE WIRING IDENT MDS PRESSURE XDUCER																			
4282700	V PS	424-3412000-069-059	3400	E89554	010	04 15	399	320 1007 1008	SSF	1002	1012		X20315		1013	1017	1021		
CHANGE MDS TO MONITOR FUEL INJECTOR PRES K466A																			
4282701	V EE	424-3412000-069-059	3400	E89554	010	04 15	399	320 1007 1008	SSF	1002	1012		X10200		1013	1017	1019		
CHANGE MDS TO MONITOR FUEL INJECTOR PRES EM																			
4280702	V PE	424-7560002-099-099	1000	E89554	018	04 04	399	320 1007 1008	SSF	1002	1014				1102	1104			
CHANGE MDS TO MONITOR FUEL INJECTOR PRES																			
4280703	V PE	424-1000001-049-049	1000	E89554	023	04 04	399	320 1007 1008	SSF	1002	1014				1102	1104			
CHANGE MDS TO MONITOR FUEL INJECTOR PRES																			
4282701	V PE	424-3410000-109-001-109	3400	E89554	026	04 15	399	320 1007 1008	SSF	1002	1012		AGE 4021		1013	1014	1018	425	1016
CHANGE MDS TO MONITOR FUEL INJECTOR PRES																			
4282705	V PE	424-3400000-119-001-119	3400	E89554	027	04 15	399	320 1007 1008	SSF	1002	1012		AGE 4022		1013	1014	1016	425	1016
CHANGE MDS TO MONITOR FUEL INJECTOR PRES																			
4282706	V EE	RTP-1028-VTF	3400	E89554		04 15	399	320 1007 1008	SSF	1002	1014				1015	1015	1016		
CHANGE MDS TO MONITOR FUEL INJECTOR PRES																			
4280729	V EF	424-560001-099-099	1000	E89991	003	04 04	363 RI	365 0943 0905	SHIP	0822	1103				1201	1203			
ADAPTER PACKAGE TRANSISTOR RECOVERY																			

BUY OFF STAMP
VTF-M-B LOGISTICS
ETR-M-B CONF MGMT

BUY OFF DATE
VTF-M-B LOGISTICS
ETR-M-B CONF MGMT

ISSUE DATE
VTF-M-B LOGISTICS
ETR-M-B CONF MGMT

KIT DATE
VTF-M-B LOGISTICS
ETR-M-B LOGISTICS

MARS NO. & ISSUE DATE
VTF-M-B LOGISTICS
ETR-M-B CONF MGMT

TEST REQUIREMENTS
VTF-M-B LOGISTICS
A-B-VTF TEST INTERACTION
ENGINEERING
SPARE-M-B LOGISTICS
AGE & A-B-M-C CONF MGMT
SPARE-M-B LOGISTICS
MAINT TOOL-M-B LOGISTICS

KIT ON DOCK DATE
VTF-M-B LOGISTICS
ETR-M-B CONF MGMT

ENG. RELEASE DATE
VTF-M-B LOGISTICS
ETR-M-B CONF MGMT

END ITEM CONTROL POINT
VTF-M-B LOGISTICS
ETR-M-B CONF MGMT

EFFECTIVITY OF CHANGE
VTF-M-B LOGISTICS
ETR-M-B CONF MGMT

CON DATA
VTF-M-B LOGISTICS
ETR-M-B CONF MGMT

ISSUE
VTF-M-B LOGISTICS
ETR-M-B CONF MGMT

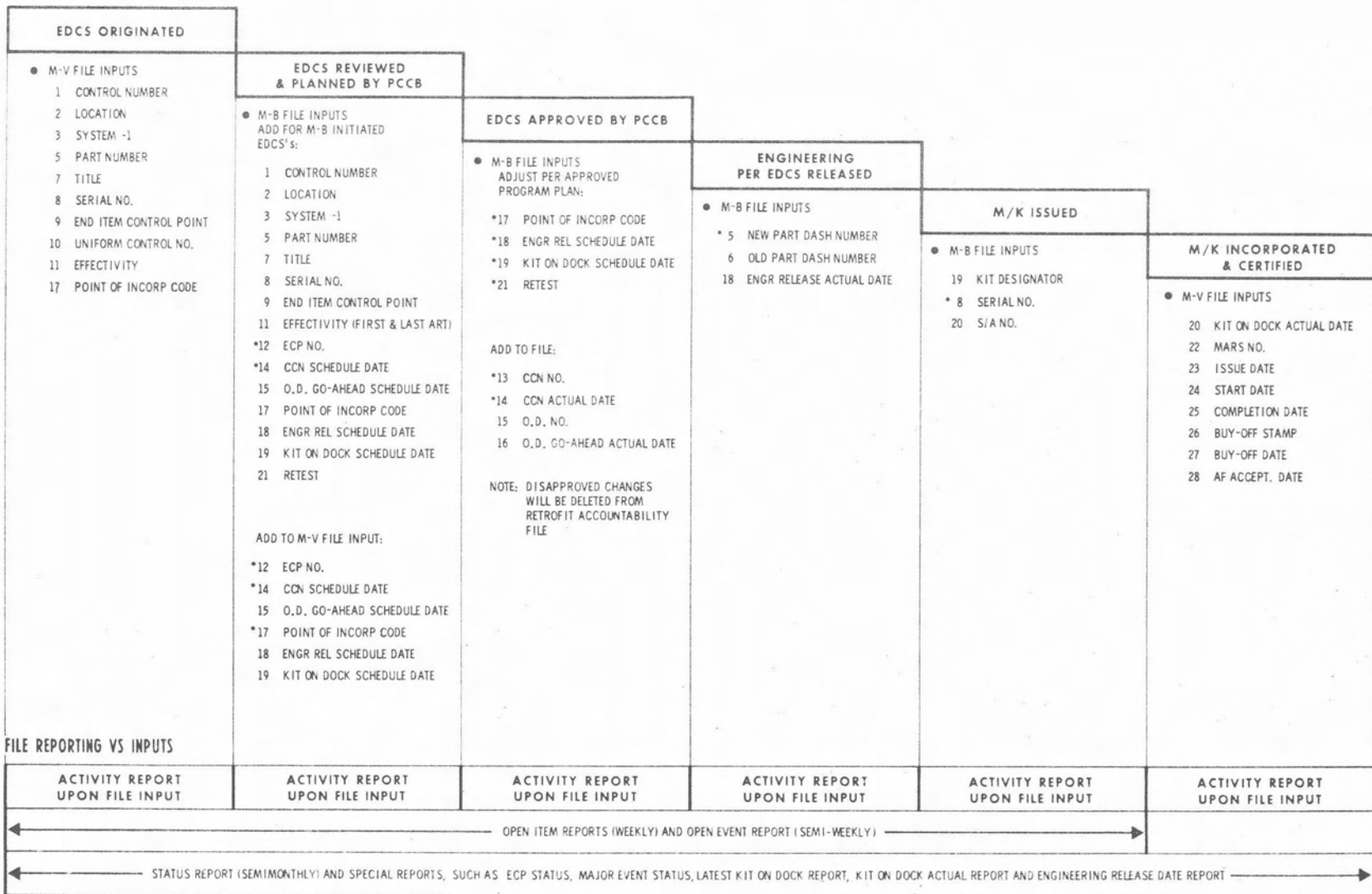
POINT OF INCORPORATION CODES
VTF-M-B LOGISTICS
ETR-M-B CONF MGMT

ISSUE NUMBER SUPPLEMENT NO. AT SUPPLY
VTF-M-B LOGISTICS
ETR-M-B CONF MGMT

ISSUE & RELEASE NO'S
VTF-M-B LOGISTICS
ETR-M-B CONF MGMT

56

CHANGE CYCLE PHASED WITH RETROFIT ACCOUNTABILITY INPUT RESPONSIBILITIES

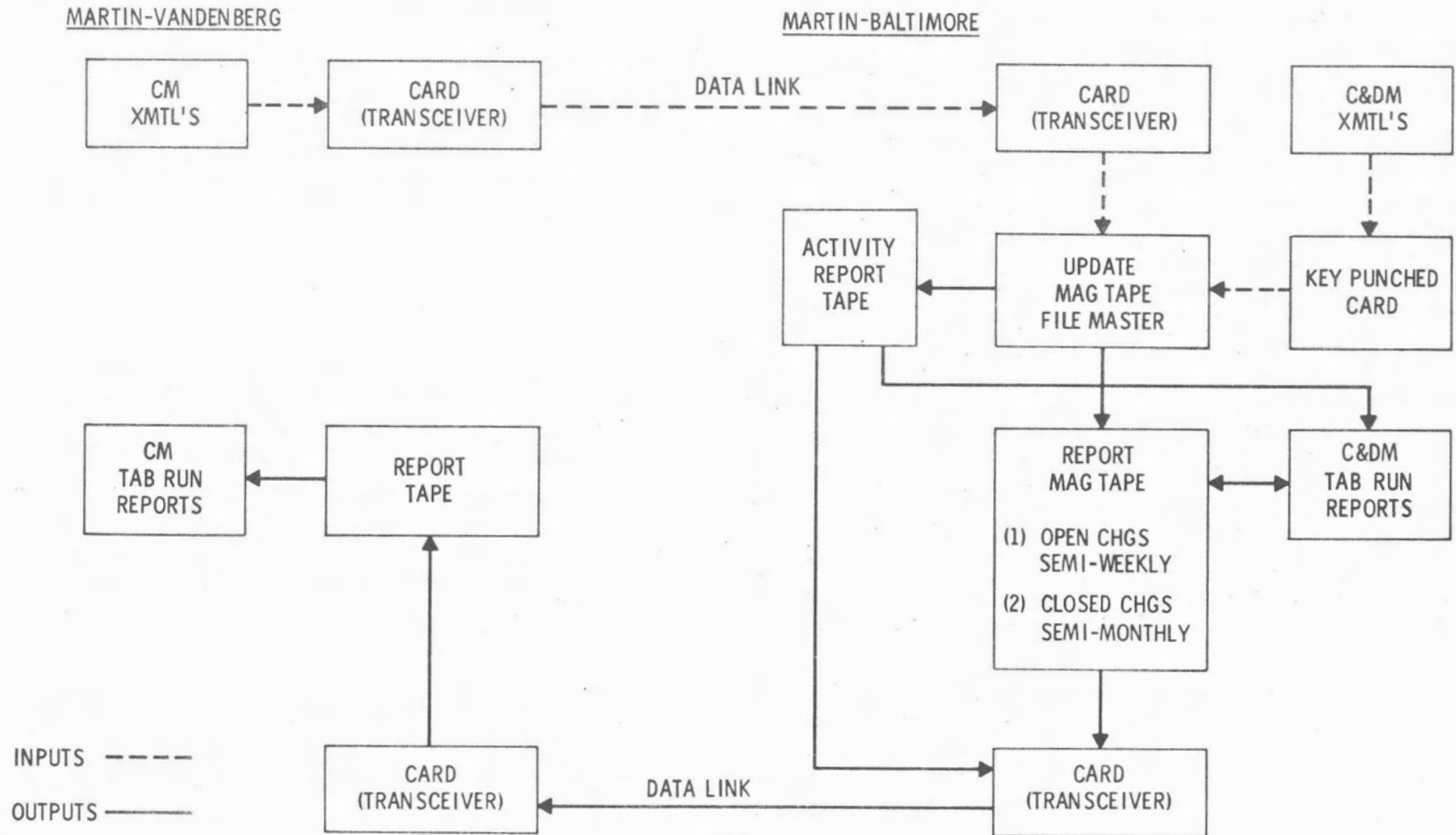


*INPUT AS REQUIRED

REFER TO RETROFIT ACCOUNTABILITY REPORT DEFINITION FOR NUMBER CORRELATION

62-9

RETROFIT ACCOUNTABILITY REPORT NETWORK



88

RETROFIT ACCOUNTABILITY REPORT & TRANSMITTAL FORMS

06-2236-00
5-64

MARTIN MARTIN
AERONAUTICS

RETROFIT ACCOUNTABILITY

JOB CODE **559-XXX** TITLE **PRIME STATUS** PAGE

CONTROL NUMBER	QTY	PART NUMBER	DASH	SER NO	END YEAR CONTROL	UNIFORM CONTROL NO	EFF DATE	EXP DATE	QTY	OD NO	QTY	QTY	QTY	QTY	QTY	MARS NO.	ISSUE DATE	START DATE	COMP DATE	BUY OFF	
6046001	WP	458A2340000-059	001	2000	K10000	002 02 02	45		39	999	SPT				AN X1234EA		1116 1117	1121	AF ACCEPT	MOO 1119	
		OLD P/N - 019																			
		AUTOPILOT MODULE REPLACEMENT																			

TRANSMITTAL-A (BALTO) →

RETROFIT ACCOUNTABILITY TRANSMITTAL

6046001	WP	458A2340000-059	001	2000	K10000	002 02 02	45		1101	SFT	1108	1115	1116	1117	1121						
---------	----	-----------------	-----	------	--------	-----------	----	--	------	-----	------	------	------	------	------	--	--	--	--	--	--

CARD AND INPUT CODE--PRINTS ONLY IN THE REPORTS JUST FOLLOWING FILE UPDATING

TRANSMITTAL-B (BALTO) →

RETROFIT ACCOUNTABILITY TRANSMITTAL

CONTROL NUMBER	QTY	PART NUMBER	DASH	SER NO	END YEAR CONTROL	UNIFORM CONTROL NO	EFF DATE	EXP DATE	QTY	OD NO	QTY	QTY	QTY	QTY	QTY	MARS NO.	ISSUE DATE	START DATE	COMP DATE	BUY OFF	
6046001									59	1101	1102	1109	1110								

TRANSMITTAL-C (BALTO)/-3 (WTR) →

RETROFIT ACCOUNTABILITY TRANSMITTAL

CONTROL NUMBER	QTY	PART NUMBER	DASH	SER NO	END YEAR CONTROL	UNIFORM CONTROL NO	EFF DATE	EXP DATE	QTY	OD NO	QTY	QTY	QTY	QTY	QTY	MARS NO.	ISSUE DATE	START DATE	COMP DATE	BUY OFF	
6604600	X	12345A00																			

69

GEMINI CONFIGURATION INDEX
END ITEM APPROVED CONFIGURATION INDEX

FIGURE 1 NO. NR
 SPEC. NO. MB-1050A

SECTION I
 NOMENCLATURE PUMPING UNIT HYD

CONTRACTOR MARTIN

ECP NUMBER	ECP TITLE	C A T	EFFECTIVITY				CCN NUMBER	CCO/TCO NUMBER	S P	NEW PART NUMBER
			RETROFIT		PRODUCTION					
			FIRST	LAST	FIRST	LAST				
<p>This data is the Base Line information obtained from the FACI Configuration Identification Package. It remains constant throughout the life of the Program.</p>										

REPORT AS OF 07/12/63

END ITEM CP5001B

PART NO. 424-5001000-009

60

GEMINI CONFIGURATION INDEX
END ITEM APPROVED CONFIGURATION INDEX

FIGURE 1 NO. NR

SPEC. NO. MB-1050A

SECTION I

NOMENCLATURE PUMPING UNIT HYD

CONTRACTOR MARTIN

ECP NUMBER	ECP TITLE	C A T	EFFECTIVITY				CCN NUMBER	CCO/TCTO NUMBER	S P	NEW PART NUMBER
			RETROFIT		PRODUCTION					
			FIRST	LAST	FIRST	LAST				
GLVMM059	MOD OF H/P MAKE COMP WITH CORP OF ENG RE	I	B002	B002	NR	NR	66	MIK-E90179	N	424-5001000-059
<div style="border: 1px solid black; border-radius: 50%; padding: 10px; width: fit-content; margin: 0 auto;"> <p>This ECP Data is the effect of ECP-59 on End Item - CP5001B and is added to the Base Line data depicted on Figure 1. The Incorporation data of ECP-59 is found in Section IV (Figure 5).</p> </div>										

REPORT AS OF 07/26/63

END ITEM CP5001B

PART NO. 424-5001000-009

GEMINI CONFIGURATION INDEX

APPROVED ECP (CHANGE) END ITEM INDEX

SECTION II
CONTRACTOR MARTIN

ECP NUMBER	AFFECTED END ITEMS					
GLVMM044	CP2600					
GLVMM044	CP2850A					
GLVMM044	CP2850B					
GLVMM048	CP2850A					
GLVMM048	CP2850B					
GLVMM051	CP4470					
GLVMM059	CP5001B					

ECP-59 affects only one End Item
while ECP-44 affects three.

REPORT AS OF 07/26/63

06-2322-00 (5-63)

62

GEMINI CONFIGURATION INDEX END ITEM QUANTITATIVE REQUIREMENTS SCHEDULE

SECTION III
CONTRACTOR MARTIN

END ITEM NUMBER	FIG I/CP NUMBER	PART NUMBER	SERIAL NUMBER	COMPLEX 19	VTF	AMR	FACTORY/DEPOT	IN TRANSIT	MC DON
CP4797	NR	424-4797000-009	B001		X				
CP4797	NR	424-4797000-009	B002			X			
CP5001A	NR	424-5001000-019	B001						

Serial #B001 of End Item CP4797 is allocated to VTF while serial #B002 is allocated to AMR.

REPORT AS OF 07/26/63

06-2323-00 (5-63)

63

**GEMINI CONFIGURATION INDEX
SYSTEM CONFIGURATION STATUS ACCOUNTING
END ITEM MODIFICATION STATUS**

SECTION IV A

CONTRACTOR MARTIN

END ITEM IDENT. NO.	END ITEM PART NUMBER	SERIAL NUMBER	LOCN.	ECP NUMBER	NEW END ITEM PART NUMBER	TYP	INCORP. DATES		KIT IDENT.	INTERNAL CONT. NUMBER	TRN.
							SCD	ACT			
CP4795B	424-4795000-009	B003	2	GLVMM018R01	424-4795000-039	S	14033	11043	A	L70005-001	A
CP4470		B001	3	GLVMM051	424-4470000-29	S	17063		B	E90173-001	A

This line of the report defines the effect of ECP 18R01 on serial number B003 of End Item CP4795B.

These are the scheduled and actual incorporation dates of the ECP into serial #B003 of End Item CP4795.

Upon incorporation of ECP18R01 the -009 configuration of the End Item will become the -039.

This identifier defines the actual Modification Kit required to incorporate ECP 18R01 into serial #B003 of End Item CP4795.

REPORT AS OF 07/26/63

h9

GEMINI CONFIGURATION INDEX SYSTEM CONFIGURATION STATUS ACCOUNTING SPARES STATUS

SECTION IV B

CONTRACTOR MARTIN

END ITEM IDENT. NO.	ECP NUMBER	SP/CHS E. I. SERIAL NO.	SEQ.	OLD PART NUMBER	NEW PART NUMBER	TY	INTERNAL CONTROL NO.	KIT IDENT.	INCORP. DATES		LOC.	TRN
									SCH	ACT		
CP2600	GLVMM044	B001	AA	424-2610000-039	424-2610000-059	S	E89922-032	O	11053	11053		
CP2600	GLVMM044	B001	AB									
CP2600	GLVMM044	B001	AC									
CP2600	GLVMM044	B001	AD									
CP2600	GLVMM044	B001	AE									
CP2600	GLVMM044	B002	AF									
CP2600	GLVMM044	B002	AG									
CP2600	GLVMM044	B002	AH									
CP2600	GLVMM044	B003	AI									
CP2600	GLVMM044	B002	AJ									
CP2800A	GLVMM012	B001	AA									

Modification Kit identifier.

Scheduled and Actual Modification Incorporation dates.

The New Part Number identifies the configuration of the Spare subsequent to modification.

The Old Part Number identifies the configuration of the Spare to be modified.

The sequence (SEQ) code defines the number of Spares affected.

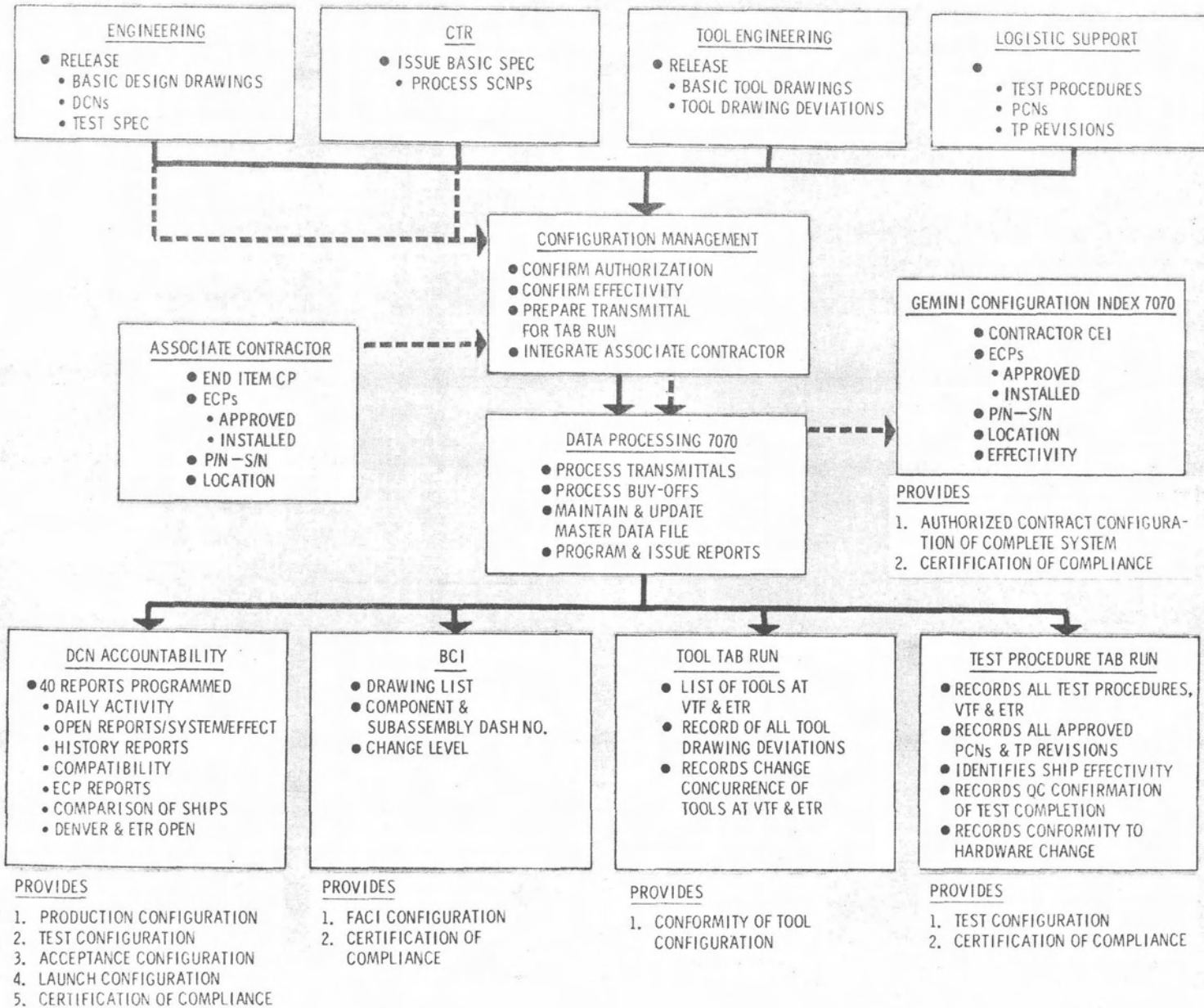
This number is the Serial Number of the Spare affected.

This portion of the report defines the affect of ECP 44 on the Spares required to support End Item CP2600.

REPORT AS OF 07/26/63

63

CONFIGURATION MANAGEMENT – DOCUMENTATION



6

COMPUTER REPORTS AVAILABLE

TYPE	RELEASED	DESCRIPTION
OPEN ACTIVITY	DAILY	REPORT BY END ITEM & CONTROL POINT OF CHANGES APPROVED & RELEASED THE PREVIOUS DAY
OPEN MASTER	WEEKLY	CUMULATIVE RECORD BY END ITEM & CONTROL POINT OF ALL OPEN ITEMS
HISTORY BY END ITEM	AS REQUESTED	COMPLETE RECORD OF DRAWINGS & STATUS OF CHANGES TO THOSE DRAWINGS (ALSO USED AS THE DRAWING TREE)
ENGINEERING DESIGN CHANGE (ECP)	WEEKLY	RECORD BY NUMBER OF ECPs & STATUS OF EACH BY DRAWING CHANGE LETTER (ALSO REFLECTS CONTRACT CHANGE NOTICE (CCN) & SPECIFICATION CHANGE NOTICE PROPOSAL (SCNP) STATUS)
COMPATIBILITY	WEEKLY	RECORD OF CHANGES & STATUS BY UNIFORM CONTROL NO. (UCN) THAT EFFECT BOTH AIRBORNE & AGE
CRITICAL EVENT	AS REQUESTED	RECORD OF CHANGES THAT MUST BE INCORPORATED BEFORE A PARTICULAR TEST IS PERFORMED
SYSTEM	AS REQUESTED	REPORT OF SYSTEMS (e.g., HYDRAULIC PROPULSION, STRUCTURE, ETC.) BY END ITEM

2-15-64

COMPUTER REPORTS AVAILABLE (cont)

TYPE	RELEASED	DESCRIPTION
CONFIGURATION INDEX	MONTHLY & AS REQUESTED	REPORT TO CUSTOMER OF BASELINE CONFIGURATION FOR END ITEMS & ASSOCIATE CONTRACTOR ITEMS (ALSO REFLECTS ECPs RELEASED & STATUS PER EACH END ITEM)
TEST TOOLS	WEEKLY	REPORT OF TEST TOOLS & MODIFICATION STATUS AT BOTH PLANT (VTF) & TEST SITES
TEST PROCEDURES	WEEKLY	REPORT OF TEST PROCEDURES & MODIFICATION STATUS AT BOTH PLANT (VTF) & TEST SITES
SPARES	WEEKLY	RECORD OF SPARES & MODIFICATION STATUS
CRITICAL COMPONENT	AS REQUESTED	RECORD OF CRITICAL COMPONENTS & CONFIGURATION STATUS

NOTE: REPORTS CAN BE PROGRAMMED AS REQUIRED (e.g., DRAWING NO. SEQUENCE, UNIFORM CONTROL NO., END ITEM & CONTROL POINT, ECP, ETC.)

CS

CONFIGURATION MANAGEMENT – DEFINITION

- COMPLETE & CURRENT PRODUCT DESCRIPTION IN TERMS OF PHYSICAL PARAMETERS, PERFORMANCE REQUIREMENTS & CONTRACTUAL AUTHORIZATION
- PRIOR AUTHORIZATION OF PRODUCT CHANGES, INCLUDING DESCRIPTION OF CHANGE, CONTRACTUAL AUTHORITY & DETAILED PLAN FOR ACCOMPLISHING CHANGE
- CONTROLLED IMPLEMENTATION OF AUTHORIZED PLAN, INCLUDING DETAILED STATUS REPORTING OF PERFORMANCE IN RELATION TO PLAN
- VERIFICATION OF ACCOMPLISHMENT OF PLAN

CONFIGURATION MANAGEMENT — ADVANTAGES

- SINGLE INTERFACE BETWEEN CUSTOMER & CONTRACTOR MANAGEMENT.
- EARLY IDENTIFICATION BY SPECIFICATION & ENGINEERING DRAWINGS OF SYSTEM & SYSTEM END ITEMS.
- IMPOSITION OF RIGID DISCIPLINE ON INTRODUCTION & INCORPORATION OF ALL CHANGES SUBSEQUENT TO REQUIREMENTS BASELINE.
- DAY-TO-DAY RECORD OF CHANGES AUTHORIZED, INCORPORATED, VERIFIED & DOCUMENTED BY SPECIFICATION AND/OR DRAWING CHANGE, INCLUDING RETROFIT INCORPORATION FOLLOWING DELIVERY.
- SINGLE LISTING OF ALL CHANGES AUTHORIZED, ALLOWING DAY-TO-DAY PLANNING & SCHEDULING OF AFFECTED SPECIALTY AREAS (ENGINEERING, MANUFACTURING, PURCHASING, QUALITY, ETC.)
- FINAL HISTORY OF CONTRACTUAL REQUIREMENTS IN COMPARISON WITH CONFIGURATION OF END ITEMS OF HARDWARE & STATUS OF ASSOCIATED DOCUMENTATION.

CONFIGURATION MANAGEMENT — ACHIEVEMENTS

- INDEPENDENT CENTRAL ORGANIZATION RESPONSIBLE FOR COMPLETE CHANGE CYCLE, INCLUDING FEASIBILITY, AUTHORIZATION, APPROVAL, IDENTIFICATION & CLOSEOUT.
- ONLY ONE UNIFORM DOCUMENT WITHIN A COMPANY THAT CAN AUTHORIZE WORK & DEFINE OVERALL PLAN.
- SINGLE CONTROL SYSTEM (MODIFIED AS NECESSARY), RATHER THAN INDIVIDUAL CONTROL SYSTEMS WITHIN EACH ORGANIZATION TO SOLVE PARTICULAR PROBLEMS. (ALL ORGANIZATIONS MUST RECOGNIZE BENEFITS OF THIS SYSTEM & NEED FOR PROVIDING PROPER & COMPLETE INFORMATION.)
- FULL SYSTEM MECHANIZATION. (ALL MARTIN DATA CONCERNING ENGINEERING CHANGES & CHANGE CONTROL RELATED TO EFFECTIVITY, SCHEDULE & CERTIFICATION OF INCORPORATION ARE PROCESSED BY COMPUTER & DISSEMINATED IN TAB RUN FORM.)

CONFIGURATION MANAGEMENT – ELEMENTS OF ORGANIZATION

CONTRACT TECHNICAL REQUIREMENTS

- ASSISTS IN PREPARATION OF THE STATEMENT OF WORK - PHASE I (CONCEPT)
- PREPARES BASIC SPECIFICATIONS - PHASE II (DEFINITION)
- NEGOTIATES APPROVAL OF SPECIFICATIONS
- PREPARES AND NEGOTIATES DETAIL END ITEM SPECIFICATIONS
- MAINTAINS SPECIFICATIONS - SPECIFICATION CHANGE NOTICE APPROVAL (SCNP)
- PREPARES AND MAINTAINS INTERFACE SPECIFICATIONS
- PREPARES ENGINEERING CHANGE PROPOSALS (ECPs) FOR CONTRACT NEGOTIATION WITH CUSTOMER



CONFIGURATION MANAGEMENT - INTRODUCTION

THE VALUE OF CONFIGURATION MANAGEMENT TO A PROGRAM LIES IN ITS ACCURACY, SCOPE, STATUS AND THE SPEED WITH WHICH IT PROVIDES INFORMATION FOR MANAGEMENT DECISIONS (BOTH IN THE NORMAL OPERATION OF A PROGRAM TO ENSURE POSITIVE UNIFORM CONTROL, AND IN EMERGENCIES WHEN A CHANGE IN PLANS MUST BE EVALUATED QUICKLY)

CONFIGURATION MANAGEMENT IS AN INTERFACE BETWEEN CUSTOMER AND CONTRACTOR THAT ENSURES A COORDINATED CONTROL

MARTIN 