

JUNE 1, 1967

APPROVED

S. K. HOFFMAN
PRESIDENT
(VICE PRESIDENT,
NORTH AMERICAN AVIATION, INC.)

V. 6

SATURN HISTORY DOCUMENT
University of Alabama Research Institute
History of Science & Technology Group
Date ----- Doc. No. -----

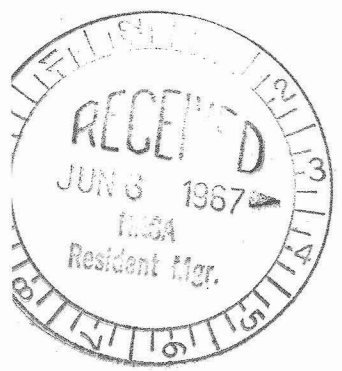
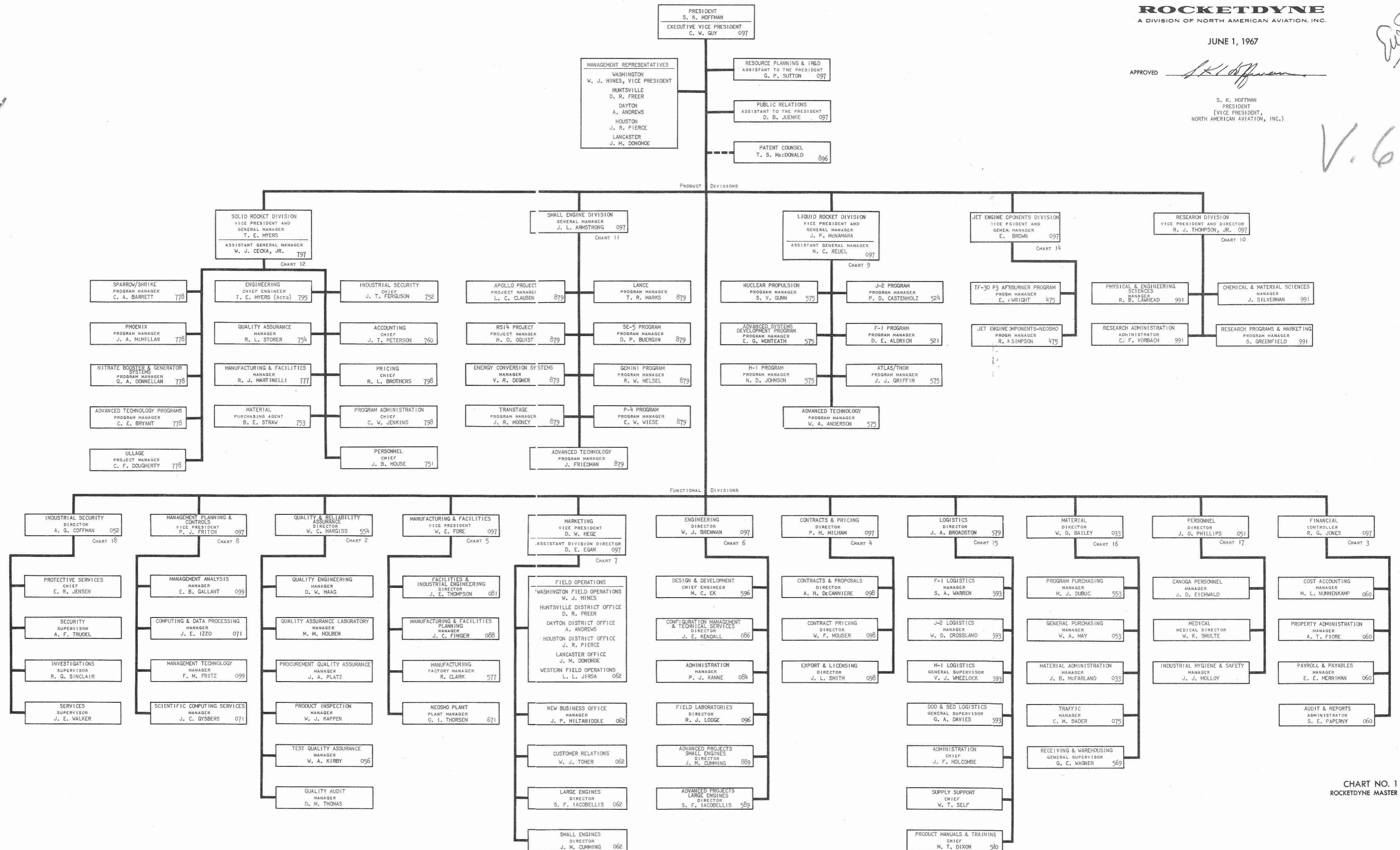

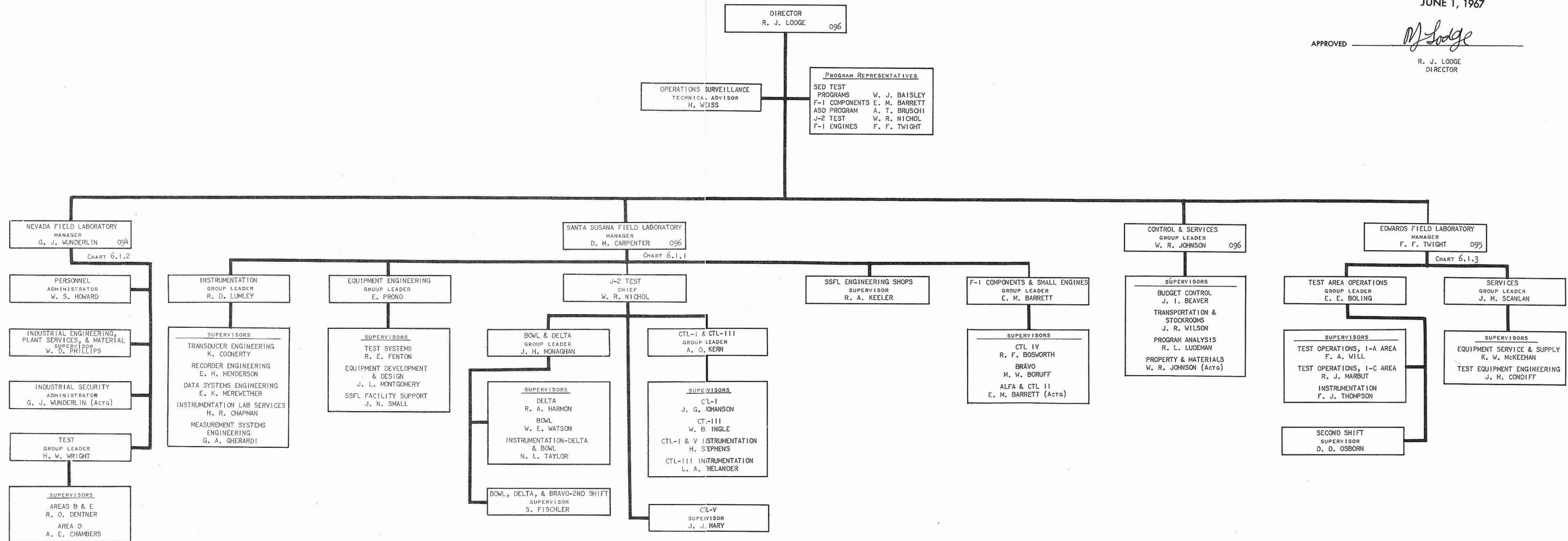


CHART NO. 1
ROCKETDYNE MASTER

ENGINEERING
FIELD LABORATORIES

JUNE 1, 1967

APPROVED 
R. J. LODGE
DIRECTOR

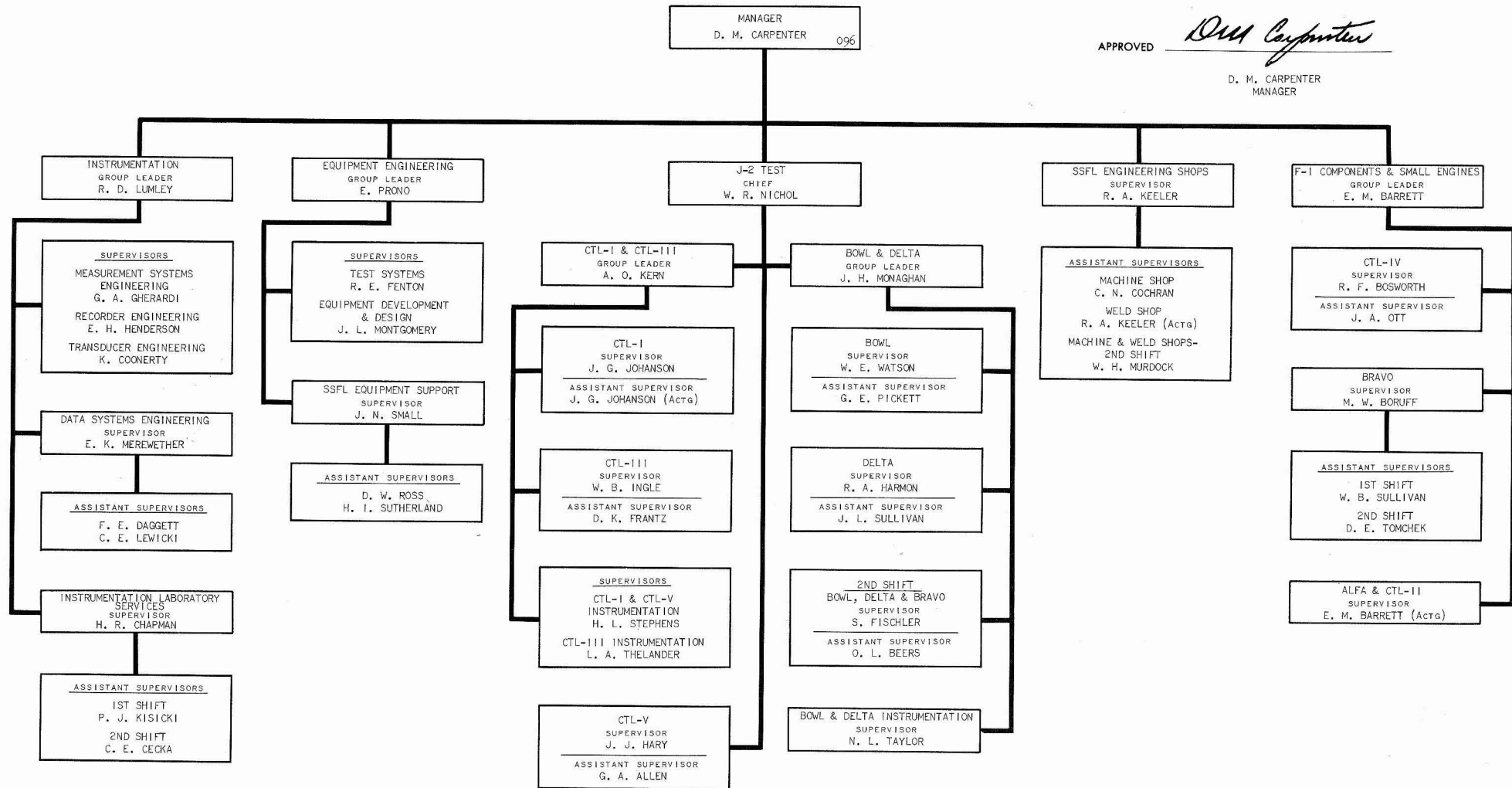


FIELD LABORATORIES

SANTA SUSANA FIELD LABORATORY

JUNE 1, 1967

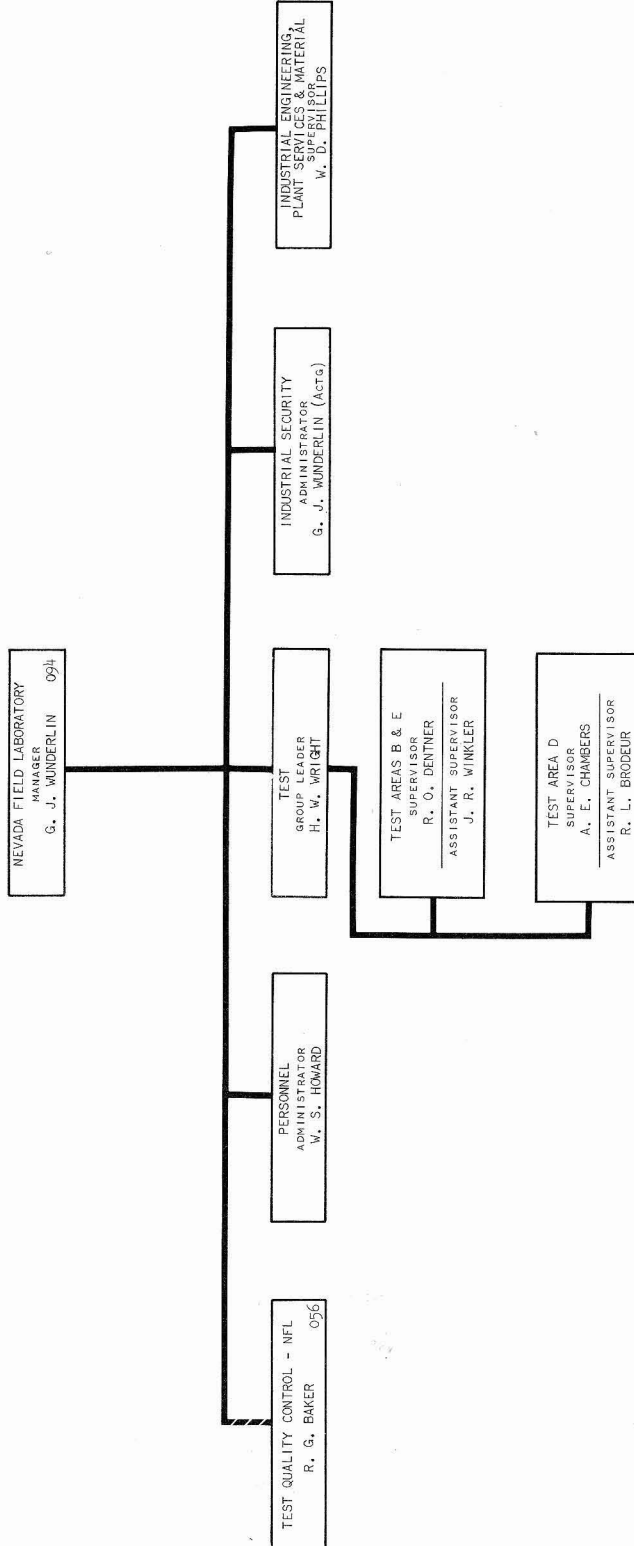
APPROVED *D.M. Carpenter*
D. M. CARPENTER
MANAGER



FIELD LABORATORIES
NEVADA FIELD LABORATORY

JUNE 1, 1967

APPROVED *G. J. Wunderlin*
G. J. WUNDERLIN
MANAGER

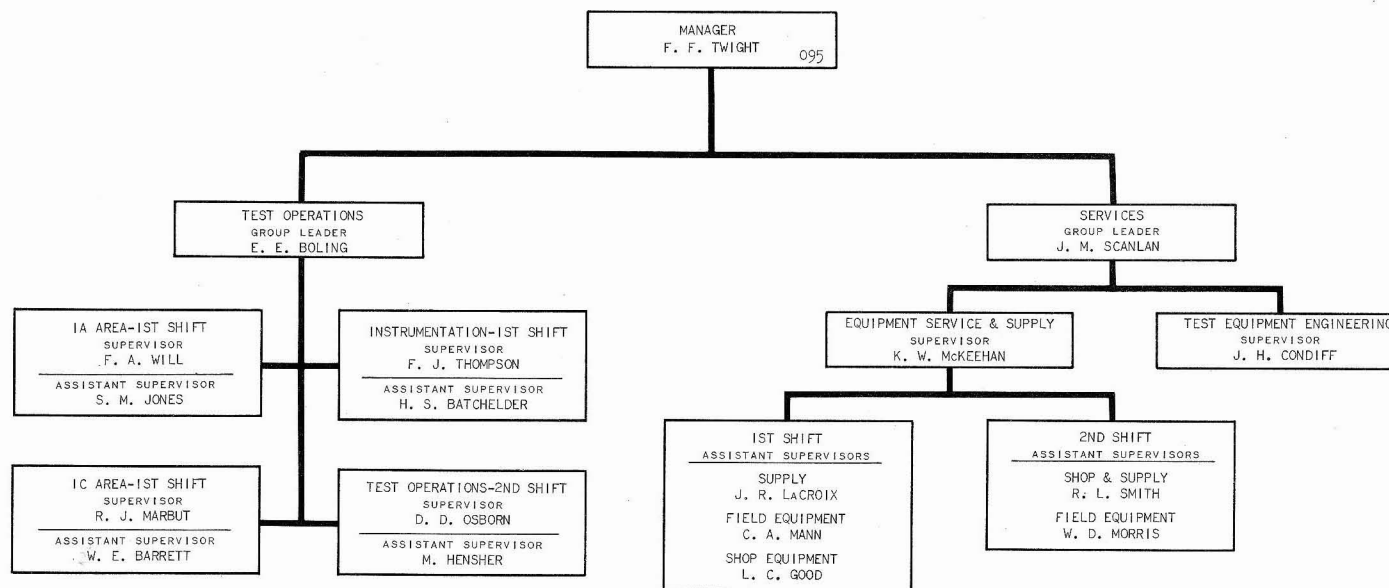


FIELD LABORATORIES

EDWARDS FIELD LABORATORY

JUNE 1, 1967

APPROVED *F. F. Twight*
F. F. TWIGHT
MANAGER



ROCKETDYNE
A DIVISION OF NORTH AMERICAN AVIATION, INC.

ENGINEERING

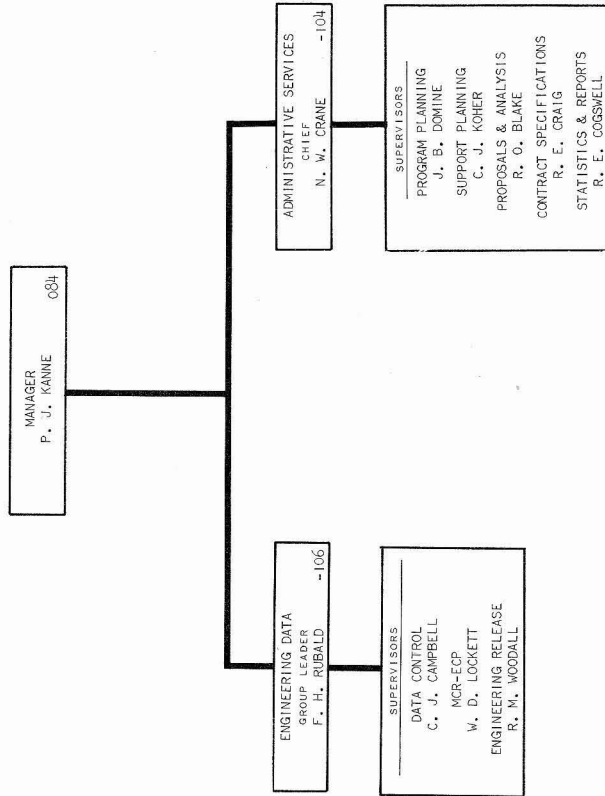
ADMINISTRATION

JUNE 1, 1967

P. J. Kanine

APPROVED

P. J. KANINE
MANAGER



SOLID ROCKET DIVISION

JUNE 1, 1967

APPROVED T. E. Myers

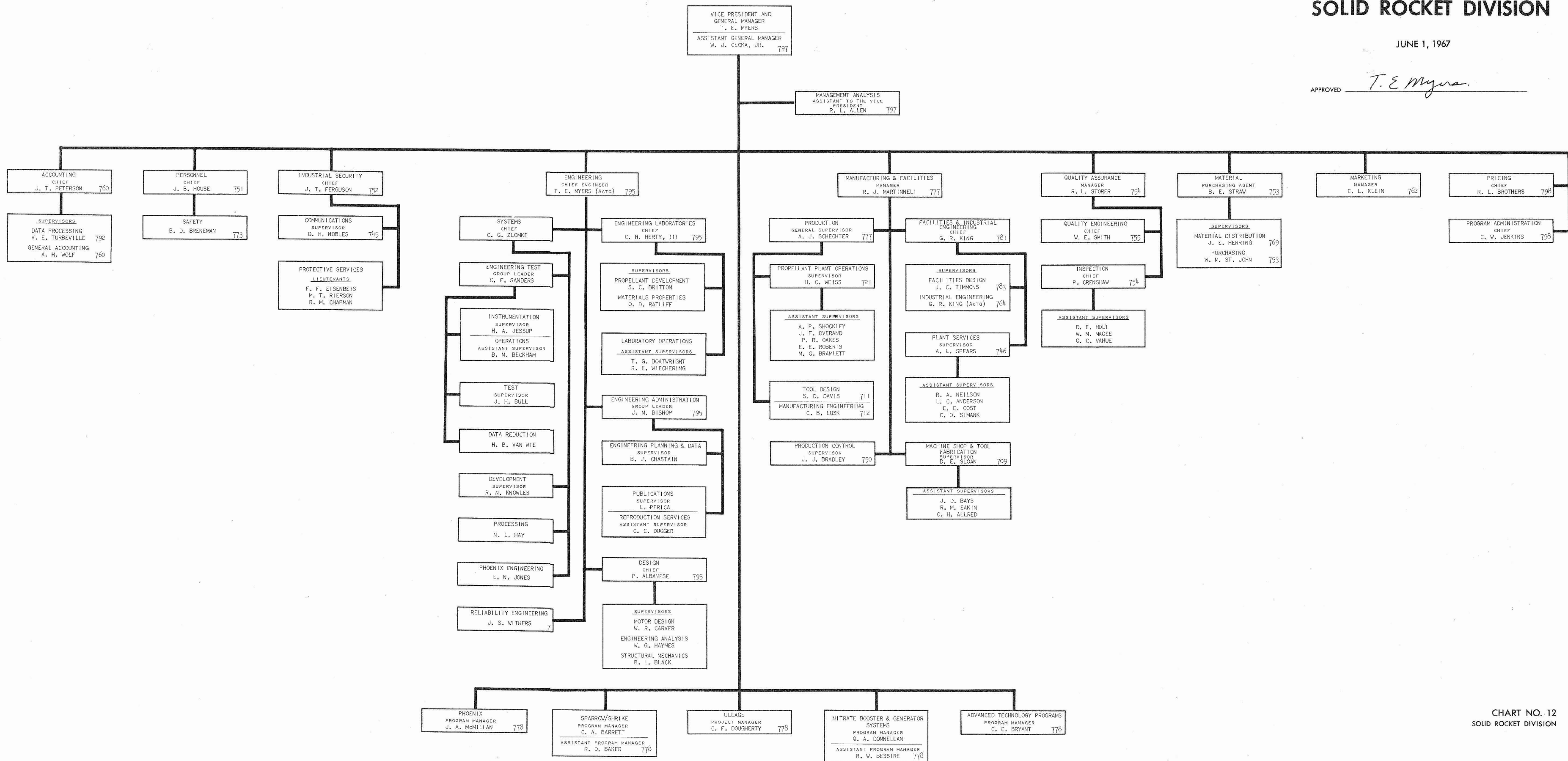


CHART NO. 12
SOLID ROCKET DIVISION

ROCKETDYNE

Organization Manual

PAGE 1 OF 3

MAY 22, 1967

DEPARTMENT NUMBERS AND NAMES

CANOGA

021	HOUSEKEEPING SERVICES-SSFL	*440	MANUFACTURING - AFTERBURNER
022	INDUSTRIAL ENGINEERING-SSFL	*441	FABRICATION - AFTERBURNER
026	PLANT SERVICES-SSFL	*442	FINAL ASSEMBLY - AFTERBURNER
027	GARAGE-SSFL	*443	MANUFACTURING ENGINEERING & TOOLING - AFTERBURNER
033	MATERIAL ADMINISTRATION	*475	PROGRAM MANAGEMENT - JECD
034	SURPLUS SALES		
041	HOUSEKEEPING SERVICES-CANOGA		
045	COMMUNICATIONS		
046	PLANT SERVICES-CANOGA & VAN NUYS		
047	GARAGE-CANOGA		
*049	MACHINERY REBUILDING	*501	INJECTORS, BELLOWS & IDWA
050	MACHINE TOOL TRAINING	*503	FABRICATION SERVICES, TURBO-PUMPS, VALVES & SMALL ENGINES FABRICATION
051	PERSONNEL	504	EXPERIMENTAL ENGINE COMPONENT ASSEMBLIES
052	INDUSTRIAL SECURITY	*507	TOOL CRIBS & PROCUREMENT
053	GENERAL PURCHASING	508	THRUST CHAMBER ASSEMBLY
056	TEST QUALITY ASSURANCE	509	EXPERIMENTAL THRUST CHAMBERS & ENGINE SYSTEMS
060	ACCOUNTING	510	J-2 PROGRAM: FINAL ASSEMBLY
061	PUBLIC RELATIONS	*511	TOOL & MATERIAL HANDLING DESIGN
062	MARKETING	512	F-1 PROGRAM: FINAL ASSEMBLY
064	INDUSTRIAL ENGINEERING-CANOGA & VAN NUYS	514	TOOL FABRICATION
*071	COMPUTING & DATA PROCESSING AND SCIENTIFIC COMPUTING SERVICES	518	MANUFACTURING ENGINEERING
072	TIMEKEEPING	519	COMPONENT PLANNING
075	TRAFFIC	520	MANUFACTURING DEVELOPMENT
080	CAFETERIA	521	F-1 PROGRAM
081	FACILITIES ADMINISTRATION & FACILITIES PLANNING	522	ELECTRICAL & ELECTRONICS
083	FACILITIES ENGINEERING	524	J-2 PROGRAM
084	ENGINEERING ADMINISTRATION	*529	FABRICATION SERVICES, THRUST CHAMBERS & INJECTORS
085	VENDING SERVICES	*536	TURBOPUMPS & VALVES
086	CONFIGURATION MANAGEMENT & TECHNICAL SERVICES	*537	TURBOPUMPS & VALVES
087	(LEAVES OF ABSENCE DESIGNATION)	538	PRODUCTION MACHINE PARTS
088	MANUFACTURING & FACILITIES PLANNING	*544	PROCESSING & THRUST CHAMBER DETAILS
*090	RESOURCE PLANNING & IR&D	548	TRUCKING, SHIPPING & BLUEPRINTS
094	NEVADA FIELD LABORATORY	550	J-2 PROGRAM: MANUFACTURING SUPPORT
095	EDWARDS FIELD LABORATORY	553	PROGRAM PURCHASING
096	FIELD LABORATORIES		
097	GENERAL ADMINISTRATION		
098	CONTRACTS & PRICING		
099	MANAGEMENT PLANNING & CONTROLS		

REVISED DEPARTMENT NUMBERS AND NAMES

REMOVE AND DESTROY DEPARTMENT NUMBERS AND NAMES, PAGES 1 AND 2, DATED NOVEMBER 1, 1966 AND PAGE 3, DATED OCTOBER 24, 1966 AND REPLACE WITH THIS COPY.

*INDICATES NEW DEPARTMENT OR CHANGE IN ORGANIZATIONAL TITLE.

CANOGA - CONTINUED

554 QUALITY & RELIABILITY ASSURANCE
 557 F-1 PROGRAM: MANUFACTURING
 SUPPORT
 *563 FIELD OPERATIONS - ON-SITE
 *567 MANUFACTURING SERVICES,
 ADMINISTRATION
 568 MASTER SCHEDULING
 569 WAREHOUSING
 573 J-2 PROGRAM: ELECTRICAL & GSE
 574 EXPERIMENTAL SERVICES
 575 PROGRAM MANAGEMENT
 576 BUDGETS & PROPOSALS (LOGISTICS)
 577 MANUFACTURING ADMINISTRATION
 579 LOGISTICS MANAGEMENT
 *580 PRODUCT MANUALS & TRAINING
 (LOGISTICS)
 584 DATA, SYSTEMS, & CONFIGURATION
 ACCOUNTING (LOGISTICS)
 585 LOGISTICS WAREHOUSE
 588 SUPPLY SUPPORT (LOGISTICS)
 589 ADVANCED PROJECTS, LARGE ENGINES
 591 PROGRAM TECHNICAL SUPPORT
 *593 FIELD OPERATIONS - OFF-SITE
 596 ENGINEERING, DESIGN & DEVELOPMENT

NEOSHO PLANT

601 MACHINE SHOP
 602 PROCESSING & METAL FITTING
 *603 JET ENGINE COMPONENTS-MANUFACTURING
 *604 MAIN ENGINE & COMPONENT ASSEMBLY
 *606 MAIN ENGINE & COMPONENTS TEST
 *608 TEST INSTRUMENTATION
 *609 TEST EQUIPMENT
 610 TEST SERVICES
 *611 TOOL DESIGN
 *614 TOOL FABRICATION
 623 PRODUCTION CONTROL
 646 PLANT SERVICES
 *650 MANUFACTURING ENGINEERING
 651 PERSONNEL
 652 INDUSTRIAL SECURITY
 *653 MATERIAL
 654 PRODUCT INSPECTION
 *655 QUALITY ASSURANCE LABORATORY
 *657 QUALITY ENGINEERING

*658 PROCUREMENT INSPECTION
 660 ACCOUNTING
 671 NEOSHO PLANT ADMINISTRATION
 672 TIMEKEEPING
 675 TRAFFIC & WAREHOUSING
 677 MANUFACTURING ADMINISTRATION
 680 CAFETERIA
 *682 INDUSTRIAL ENGINEERING
 686 REPRODUCTIONS & BLUEPRINTS
 687 (LEAVES OF ABSENCE DESIGNATION)
 688 SUPPLY SUPPORT
 692 DATA PROCESSING
 696 ENGINEERING LIAISON
 *699 PROGRAM ANALYSIS & CONTROLS

SOLID ROCKET DIVISION - MCGREGOR

*709 MACHINE SHOP & TOOL
 FABRICATION
 711 TOOL DESIGN
 *712 MANUFACTURING ENGINEERING
 *721 PROPELLANT PLANT OPERATIONS
 *745 COMMUNICATIONS
 746 PLANT SERVICES
 750 PRODUCTION CONTROL
 751 PERSONNEL
 752 INDUSTRIAL SECURITY
 *753 PURCHASING
 *754 INSPECTION
 *755 QUALITY ENGINEERING
 756 TEST INSPECTION
 *757 QUALITY ASSURANCE PLANNING
 & COST CONTROL
 *758 PROCUREMENT QUALITY ASSURANCE
 759 PROPERTY ADMINISTRATION
 760 ACCOUNTING
 *762 MARKETING
 *764 INDUSTRIAL ENGINEERING
 766 AUDITS & BUDGETS
 769 WAREHOUSING
 773 SAFETY
 775 TRAFFIC
 777 MANUFACTURING ADMINISTRATION

*INDICATES NEW DEPARTMENT OR CHANGE IN ORGANIZATIONAL TITLE.

DEPARTMENT NUMBERS AND NAMES

PAGE 3 OF 3
MAY 22, 1967

SOLID ROCKET DIVISION - MCGREGOR - CONTINUED

778 PROGRAM MANAGEMENT
*781 FACILITIES ADMINISTRATION &
PLANNING
*783 FACILITIES DESIGN
787 (LEAVES OF ABSENCE DESIGNATION)
792 DATA PROCESSING
795 ENGINEERING
797 GENERAL ADMINISTRATION
798 CONTRACTS & PRICING

SMALL ENGINE DIVISION

807 SMALL ENGINES FABRICATION &
SUB-ASSEMBLY
824 INDUSTRIAL SERVICES
827 FINAL ASSEMBLY & TEST
879 PROGRAM MANAGEMENT
889 ADVANCED PROJECTS, SMALL ENGINES
895 ENERGY CONVERSION SYSTEMS

RESEARCH DIVISION

991 RESEARCH

*INDICATES NEW DEPARTMENT OR CHANGE IN ORGANIZATIONAL TITLE.

RGS:RDN