

EDITION "A"

MANNED SPACE FLIGHT SCHEDULES

Volume VII

VIII.1

CONSTRUCTION OF FACILITIES

MSFC-Book 2-Huntsville



OMSF PROGRAM STATUS REVIEW OCTOBER 1965

THIS DOCUMENT CONTAINS SENSITIVE PROGRAM INFORMATION. THE PERSON TO WHOM IT IS ASSIGNED IS RESPONSIBLE FOR LIMITING ACCESS TO THIS DOCUMENT TO NASA PERSONNEL WHO REQUIRE SUCH INFORMATION IN THE DISCHARGE OF THEIR OFFICIAL DUTIES. THIS MATERIAL IS NOT TO BE REPRODUCED OR MADE AVAILABLE TO CONTRACTORS.

Document No. _____ Name _____

OMSF PROGRAM STATUS REVIEW PROGRAM SCHEDULE ROAD MAP

MSFC FACILITIES HUNTSVILLE

SATURN V RELATED FACILITIES

PROJECT NO.	TITLE
6201	SATURN STATIC TEST FACILITY (6211)(6224)(6225)(6226)
6218	LOAD TEST ANNEX
6222	HYDROSTATIC TEST FACILITY
6227	ADVANCED SATURN DYNAMIC TEST FAC
6236	ADVANCED SATURN GROUND SUPPORT EQUIP TEST FACILITY
6236	ADDITION TO SATURN V GROUND SUPPORT EQUIP TEST FACILITY
6253	SOUND SUPPRESSOR FOR S-IC STATIC TEST FACILITY

GENERAL SUPPORT & TECHNICAL RELATED FACILITIES

PROJECT NO.	TITLE	PROJECT NO.	TITLE
6213	EXTENSION TO PRIMARY UTILITIES	6246	& 6249 HANGAR FOR VEH COMP & ASSY STATION
6221	COMPONENTS TEST FACILITY	6247	HAZ OPERATIONS LAB
6221	EXPANSION OF COMP TEST FACILITY	6248	MOD OF INSTR AND CONTROL SYS IN THE EAST AREA
6228	ENGR & ADMIN BLDG	6250	PROJECT ENGINEERS OFFICE
6229	INSTRUMENT LABORATORY	6252	UTILITY INSTALLATIONS
6230	ADDITION TO COMP DIVISION BUILDING	6252	EXTENSION TO UTILITY SYS
6231	COMP & SUB-ASSEMBLY ACCEPTANCE BUILDING	6254	COLD FLOW TEST FACILITY
6232	HYDRAULIC TEST FAC	6255	SA SUPP TEST AREA
6233	LOW TEMPERATURE FAC	6256	EXTENSION TO P&VE LAB
6234	ENGINEERING BUILDING	6258	ADD TO MATERIALS LAB (FY-66)
6234	TEST ENGR. BLDG. EXTEN (FY-66)	6259	NON DESTRUCTIVE TEST LAB (FY-66)
6235	UTILITY INSTALLATIONS	6261	LOX STORAGE FAC FOR F-1 STAND (FY-66)
6237	ACCELERATION TEST & CALIBRATION FACILITY	6263	ADD TO COMM BLDG
6238	ACOUSTIC MODEL TEST FAC		
6239	ADDITION TO COMPONENTS TEST FAC		
6240	ADDITION TO TEST SUPPORT SHOP		
6241	BARGE DOCK & LOADING FAC		
6242	EXPANSION & MOD OF HI-PRESS GAS & PROP SYS		
6242	EXTEN TO HI PR GAS SYS (FY-66)		
6244	EXTENSION TO LOAD TEST ANNEX		

SATURN I & IB RELATED FACILITIES

PROJECT NO.	TITLE
6214	EXPANSION OF BLOCKHOUSE
6215	(6219) LIQUID HYDROGEN FACILITY
6220	MODIFICATION WEST SIDE OF STATIC TEST STAND

ENGINE RELATED FACILITIES

PROJECT NO.	TITLE
6223	F-1 ENGINE FACILITIES

SCHEDULE RESPONSIBILITY _____

STATUS RESPONSIBILITY _____

**MANNED SPACE FLIGHT SCHEDULE
TABLE OF CONTENTS
VOLUME VII-FACILITIES
BOOK 2-MSFC-HUNTSVILLE**



ORIGINAL SCHED. APPROVAL _____

(Date)

LAST SCHED. CHANGE _____

(Date)

(No.)

(Initials)

STATUS AS OF _____

(Date)

(Initials)

CONTRACTOR _____

PROJECT:
SCH'D NO: _____

EDITION A

<u>Project No.</u>	<u>Title</u>	<u>Level</u>	<u>Page No.</u>	<u>Project No.</u>	<u>Title</u>	<u>Level</u>	<u>Page No.</u>
6201(6211, 6224, 6225, 6226)	Saturn Static Test Facility (FY-61-63)	A	VII-2-1	6221	Extension of Components Test Facility (FY-65)	A	VII-2-3
	(a) Test Stand Excavation	A	VII-2-1		(a) Building Addition	B	VII-2-10
	(b) Site Development & Foundation	A	VII-2-1		(b) Instrumentation & Controls	B	VII-2-10
	(c) Control Center & Appurtenance	A	VII-2-1	6222	Hydrostatic Test Facility (FY-62)	A	VII-2-3
	(d) Superstructure	A	VII-2-1				
	(e) Deflector	A	VII-2-1	6223	F-1 Engine Test Stand (FY-62-63)	A	VII-2-3
	(f) Booster Service, Helium Sys & Support Building	A	VII-2-1		(a) Demo, Building Relocation and Excavation	A	VII-2-3
	(g) High Pressure Water System	A	VII-2-1		(b) Test Stand & Appurtenances	A	VII-2-3
	(h) Instrumentation & Controls	A	VII-2-1		(c) High Pressure Industrial Water, Preparation Bldg & Observe Bunker	A	VII-2-3
	(i) Adaption Hardware	A	VII-2-1	6227	Advanced Saturn Dynamic Test Facility	A	VII-2-3
6214	Expansion of Blockhouse (FY-61-62)	A	VII-2-1&2		(a) Test Stand Terminal Bldg & Cable Tunnels	A	VII-2-3
	(a) Blockhouse Expanson	A	VII-2-1				
	(b) Instrumentation & Controls	A	VII-2-2	6236	Advanced Saturn GSE Test Fac (FY-63)	A	VII-2-3&4
6215 (6219)	Liquid Hydrogen Facility (FY-61-62)	A	VII-2-2		(a) Test Facility	B	VII-2-11
6218	Load Test Annex (FY-61-62)	A	VII-2-2		(b) Motion Simulators (Equipment)	B	VII-2-11
6220	Modification of West Side of Static Test Stand (FY-62-63)	A	VII-2-2		(c) Instrumentation & Controls	B	VII-2-12
	(a) Test Position & Annex	A	VII-2-2	6236	o Addition to Sat V GSE Test Facility	A	VII-2-4
	(b) Instrumentation & Controls	A	VII-2-2		(a) Support Building	B	VII-2-13
	(c) Modification for F-1 Engine Tests	A	VII-2-2		o (b) Instrumentation & Controls	B	VII-2-14
	(d) Conversion to S-IB Test Config	A	VII-2-2	6241	Barge Dock & Loading Facility	A	VII-2-4
6221	Component Test Facility (FY-62&63)	A	VII-2-2	6213	Extension of Primary Utilities (FY-62)	A	VII-2-5
	(a) Support Building	A	VII-2-2	6228	Engineering & Administration Bldg	A	VII-2-5
	(b) F-1 Turbopump Test Stand	A	VII-2-2	6229	Instrumentation Laboratory (FY-62-63)	A	VII-2-5
	(c) Test Position, Control Center & Building Modification	A	VII-2-2	6230	Addition to Computation Division Bldg	A	VII-2-5
	(d) Instrumentation and Controls	A	VII-2-2	6231	Components & Subassembly Acceptance Building (FY-63)	A	VII-2-5
(6239)	Addition to the Components Test Facility (FY-64)	A	VII-2-2&3				
	(a) Test Facilities	B	VII-2-9				
	(b) Instrumentation & Controls	B	VII-2-9				

SCHEDULE RESPONSIBILITY _____

STATUS RESPONSIBILITY _____

**MANNED SPACE FLIGHT SCHEDULE
TABLE OF CONTENTS
VOLUME VII-FACILITIES
BOOK 2-MSFC-HUNTSVILLE**



ORIGINAL SCHED. APPROVAL _____ (Date)

LAST SCHED. CHANGE _____ (Date) (No.) (Initials)

STATUS AS OF _____ (Date) (Initials)

CONTRACTOR _____

PROJECT:
SCH'D NO: _____

EDITION A

<u>Project No.</u>	<u>Title</u>	<u>Level</u>	<u>Page No.</u>	<u>Project No.</u>	<u>Title</u>	<u>Level</u>	<u>Page No.</u>
6232	Hydraulic Test Facility (FY-63)	A	VII-2-5	6252	o Utility Installations (FY-64)	A	VII-2-6
6233	Low Temperature Facility (FY-63)	A	VII-2-5		o (a) Utility Distribution Systems	A	VII-2-6
6234	Engineering Building (FY-63-64)	A	VII-2-5		o (b) Roadnet & Railroad Modifications	B	VII-2-23
6234	Test Engineering Building Extension	A	VII-2-5	6252	Extension to Utility System (FY-64-65)	A	VII-2-6
		B	VII-2-15			B	VII-2-24
6235	Utility Installation (FY-63)	A	VII-2-5	6254	Cold Flow Test Facility (FY-65)	A	VII-2-6
	(a) Saturn V Road	A	VII-2-5				
	(b) Communications	A	VII-2-5	6255	Saturn Support Test Area	A	VII-2-6
	(c) Utility Distribution Systems	A	VII-2-5		(a) Gas Propellant System	B	VII-2-25
6237	Acceleration Test and Calibration Facility (FY-64)	A	VII-2-5		(b) Transportation Hangar	B	VII-2-25
		B	VII-2-16		(c) Addition Component Support Bldg	B	VII-2-25
6238	Acoustic Model Test Facility (FY-64)	A	VII-2-5		(d) Replace Deflector Pit	B	VII-2-26
	(a) Test Facilities	B	VII-2-17		o (e) Acoustic Control & Communication Center	B	VII-2-26
	(b) Instrumentation & Controls	B	VII-2-17	6256	Extension to Propulsion & Vehicle Engineering Laboratory (FY-65)	A	VII-2-6
6240	Additions to Test Support Shop (FY-64)	A	VII-2-5			B	VII-2-27
		B	VII-2-18	6258	Additions to Materials Laboratory (FY-66)	A	VII-2-7
6242	Expansion & Modernization of High Pressure Gas & Propellant Sys (FY-64)	A	VII-2-5	6259	Non Destructive Testing Lab (FY-66)	A	VII-2-28
		B	VII-2-19			B	VII-2-29
6242	Extension to High Pressure Gas System (FY-66)	A	VII-2-6	6261	LOX Storage Fac for F-1 Stand (FY-66)	A	VII-2-7
6244	o Extension to Load Test Annex (FY-64)	A	VII-2-6	6263	Addition to Communications Bldg (FY-64)	A	VII-2-30
		B	VII-2-20	6204	Pressure Test Cell, Building 4708	A	VII-2-7
6246	o Hangar for Vehicle Components & Assembly Station (FY-64)	A	VII-2-6	6205	Extension to Assembly, Bldg 4705	A	VII-2-7
		B	VII-2-21	6206	Addition to Engineering Bldg 4610	A	VII-2-7
6247	Hazardous Operation Laboratory	A	VII-2-6	6207	Completion of G & C Lab, Bldg 4487	A	VII-2-7
6248	o Modernization of Instrumentation & Control System (East Area)	A	VII-2-6				
		B	VII-2-22				
6250	Project Engineering Office (FY-64)	A	VII-2-6				

SCHEDULE RESPONSIBILITY _____

STATUS RESPONSIBILITY _____

MANNED SPACE FLIGHT SCHEDULE
TABLE OF CONTENTS
VOLUME VII-FACILITIES
BOOK 2-MSFC-HUNTSVILLE



ORIGINAL SCHED. APPROVAL _____ (Date)

LAST SCHED. CHANGE _____ (Date) (No.) (Initials)

STATUS AS OF _____ (Date) (Initials)

CONTRACTOR _____

PROJECT:
SCH'D NO: _____

EDITION A

<u>Project No.</u>	<u>Title</u>	<u>Level</u>	<u>Page No.</u>
6208	Addition to Fab Lab, Bldg 4712	A	VII-2-7
6209	Addition to Checkout Bldg 4808	A	VII-2-7
6210	Ext. of Primary Electric Distr Sys	A	VII-2-7
6212	Extension to Engineering Bldg	A	VII-2-7
	o NOTES	A	VII-2-8
	MSFC - Huntsville Funding	A	VII-2-8a
	HUNTSVILLE EXPLANATIONS	A	VII-2-8b

- o Indicates Changes From Last Submission
- * Indicates Deletion of a Milestone
- ** Indicates Additions of a Milestone

SCHEDULE SYMBOLS

MILESTONE SYMBOLS

	SCHEDULED COMPLETION DATE-CONTROLLED MILESTONE
	SCHEDULED COMPLETION DATE-SUPPORTING MILESTONE
	FIRST SCHEDULE REVISION-CONTROLLED MILESTONE*
	FIRST SCHEDULE REVISION-SUPPORTING MILESTONE*
	ACTUAL COMPLETION DATE-CONTROLLED MILESTONE
	ACTUAL COMPLETION DATE-SUPPORTING MILESTONE
	RESCHEDULING REQUEST-CONTROLLED MILESTONE
	EXPECTED COMPLETION DATE
	LATEST ALLOWABLE COMPLETION DATE
	PROJECT (PROGRAM) MANAGERS' ASSESSMENT OF EXPECTED COMPL DATE
	EXPECTED AND ASSESSMENT DATES IDENTICAL
	EXPECTED, LATEST ALLOWABLE & ASSESSMENT DATES IDENTICAL
	SCHEDULED AND EXPECTED DATES IDENTICAL
	SCHEDULED, EXPECTED AND LATEST ALLOWABLE DATES IDENTICAL (CONTROLLED MILESTONE)**
	SCHEDULED AND EXPECTED DATES IDENTICAL (SUPPORTING MILESTONE)
	SCHEDULED, EXPECTED AND LATEST ALLOWABLE DATES IDENTICAL (SUPPORTING MILESTONE)**

USE OF SCHEDULE SYMBOLS IN CONJUNCTION WITH ACTIVITY BARS

ACTIVITY INITIATION

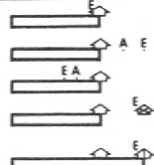
	PREDICTED INITIATION ON SCHEDULE
	PREDICTED LATE INITIATION
	PREDICTED EARLY INITIATION

ACTIVITY PROGRESS TOWARD COMPLETION - BASIC SCHEDULE

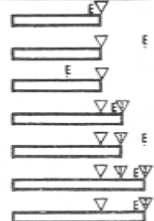
	ACTIVITY ON SCHEDULE
	ACTIVITY BEHIND SCHEDULE
	ACTIVITY AHEAD OF SCHEDULE
	PROGRESS AGAINST SCHEDULED DELIVERIES, TEST FIRINGS, ETC. (ON SCHEDULE)
	LATE INITIATION - BEHIND SCHEDULE
	EARLY INITIATION - AHEAD OF SCHEDULE
	BEHIND SCHEDULE - FOUR CUMULATIVE DELIVERIES
	AHEAD OF SCHEDULE - SEVEN CUMULATIVE DELIVERIES

* THE 2 FOR 2ND RESCHEDULING, 3 FOR 3RD RESCHEDULING ETC.
 ** SHOWN IN CONJUNCTION WITH A MILESTONE RESCHEDULED TWICE.

CONTROLLED MILESTONES



SUPPORTING MILESTONES



ACTIVITY OR EVENT COMPLETION

	PREDICTED COMPLETION ON SCHEDULE
	PREDICTED LATE COMPLETION WITH PROJECT MANAGERS' ASSESSMENT
	PREDICTED EARLY COMPLETION WITH PROJECT MANAGERS' ASSESSMENT
	PREDICTED LATE COMPLETION WITH PROJECT MANAGERS' REQUEST FOR RESCHEDULING
	RESCHEDULING REQUEST APPROVED, FIRST SCHEDULE REVISION. PREDICTED COMPLETION ON SCHEDULE

	PREDICTED COMPLETION ON SCHEDULE
	PREDICTED LATE COMPLETION (PROJECT MANAGERS' ASSESSMENT OPTIONAL)
	PREDICTED EARLY COMPLETION
	FIRST SCHEDULE REVISION-PREDICTED COMPLETION ON SCHEDULE
	FIRST SCHEDULE REVISION-PREDICTED LATE COMPLETION
	SECOND SCHEDULE REVISION-FIRST MONTH SUBMISSION
	SECOND SCHEDULE REVISION-2ND MONTH SUBMISSION

RANDOM SITUATIONS

(E AND A SYMBOLS HAVE BEEN OMITTED IN PORTRAYING RANDOM SITUATIONS)

PREDICTED LATE INITIATION & LATE COMPLETION

	CONDITION "A"-PROPOSED
	CONDITION "A"-ACCEPTED
	CONDITION "B"-PROPOSED (PREDICTED INITIATION LATER THAN SCHEDULED COMPLETION)
	CONDITION "B"-ACCEPTED

PREDICTED EARLY INITIATION & EARLY COMPLETION

	CONDITION "C"-PROPOSED
	CONDITION "C"-ACCEPTED
	CONDITION "D"-PROPOSED (PREDICTED COMPLETION EARLIER THAN SCHEDULED INITIATION)
	CONDITION "D"-ACCEPTED

NEW PREDICTED COMPLETION DATE

	EXISTING SCHEDULE	GRAPH CURVES
	PROPOSED	----- PLANNED
	ACCEPTED	———— ACTUAL
	 CURVE ESTIMATE

USE OF "LATEST ALLOWABLE" DATE SYMBOL

	KEY MILESTONE - PREDICTED EARLY COMPLETION
	SUPPORTING MILESTONE - PREDICTED LATE COMPLETION
	CONTROLLED MILESTONE - PREDICTED LATE COMPLETION

MILESTONES		CY 1963												CY 1964												CY 1965												CY 1966												CY 1967											
		J	F	M	A	M	J	J	A	S	O	N	D	J	F	M	A	M	J	J	A	S	O	N	D	J	F	M	A	M	J	J	A	S	O	N	D	J	F	M	A	M	J	J	A	S	O	N	D	J	F	M	A	M	J	J	A	S	O	N	D
1	6201- (6211, 6224, 6225, & 6226) SATURN STATIC TEST FAC (FY-61-63)	[Gantt bar from Jan 1963 to May 1965]																																																											
2	INSTALL S-IC-T	[Gantt bar from May 1965 to Jun 1965]																																																											
3	FIRST FIRING	[Gantt bar from Jun 1965 to Jul 1965]																																																											
4	(A) TEST STAND EXCAVATION	COMPLETED AUG. 15, 1961																																																											
5	(B) SITE DEVELOPMENT & FOUNDATION	COMPLETED DEC. 15, 1962																																																											
6	(C) CONTROL CENTER & APPURTENANCE	[Gantt bar from Jan 1963 to Feb 1963]																																																											
7	FIRST FIRING	[Gantt bar from Feb 1963 to Mar 1963]																																																											
8	(D) SUPERSTRUCTURE	[Gantt bar from Aug 1961 to May 1965]																																																											
9	INSTALL S-IC-T	[Gantt bar from May 1965 to Jun 1965]																																																											
10	(F) DEFLECTOR	[Gantt bar from Dec 1962 to Jan 1964]																																																											
11	FIRST FIRING	[Gantt bar from Jan 1964 to Feb 1964]																																																											
12	(F) BOOSTER SERVICE SYS HELIUM SYS & SUPP BLDG	[Gantt bar from Jan 1964 to May 1965]																																																											
13	FIRST FIRING	[Gantt bar from May 1965 to Jun 1965]																																																											
14	(G) HI PRESSURE WATER SYSTEM	[Gantt bar from Dec 1962 to Jan 1964]																																																											
15	FIRST FIRING	[Gantt bar from Jan 1964 to Feb 1964]																																																											
16	(H) INSTRUMENTATION & CONTROLS	[Gantt bar from Jan 1964 to May 1965]																																																											
17	FIRST FIRING	[Gantt bar from May 1965 to Jun 1965]																																																											
18	(I) ADAPTION HARDWARE	[Gantt bar from Jan 1964 to Feb 1964]																																																											
19	6214- EXPANSION OF BLOCKHOUSE (FY-61-62)	[Gantt bar from Jan 1964 to May 1965]																																																											
20	(A) BLOCKHOUSE EXPANSION	[Gantt bar from Dec 1962 to Jan 1964]																																																											
NOTES																																																													

MANNED SPACE FLIGHT SCHEDULE

MSFC-HUNTSVILLE FACILITIES SUMMARY



ORIGINAL SCHED. APPROVAL 3/31/63 (Date)
 LAST SCHED. CHANGE 4/30/63 (Date) (No.) (Initials)
 STATUS AS OF 9/30/65 (Date) (Initials)

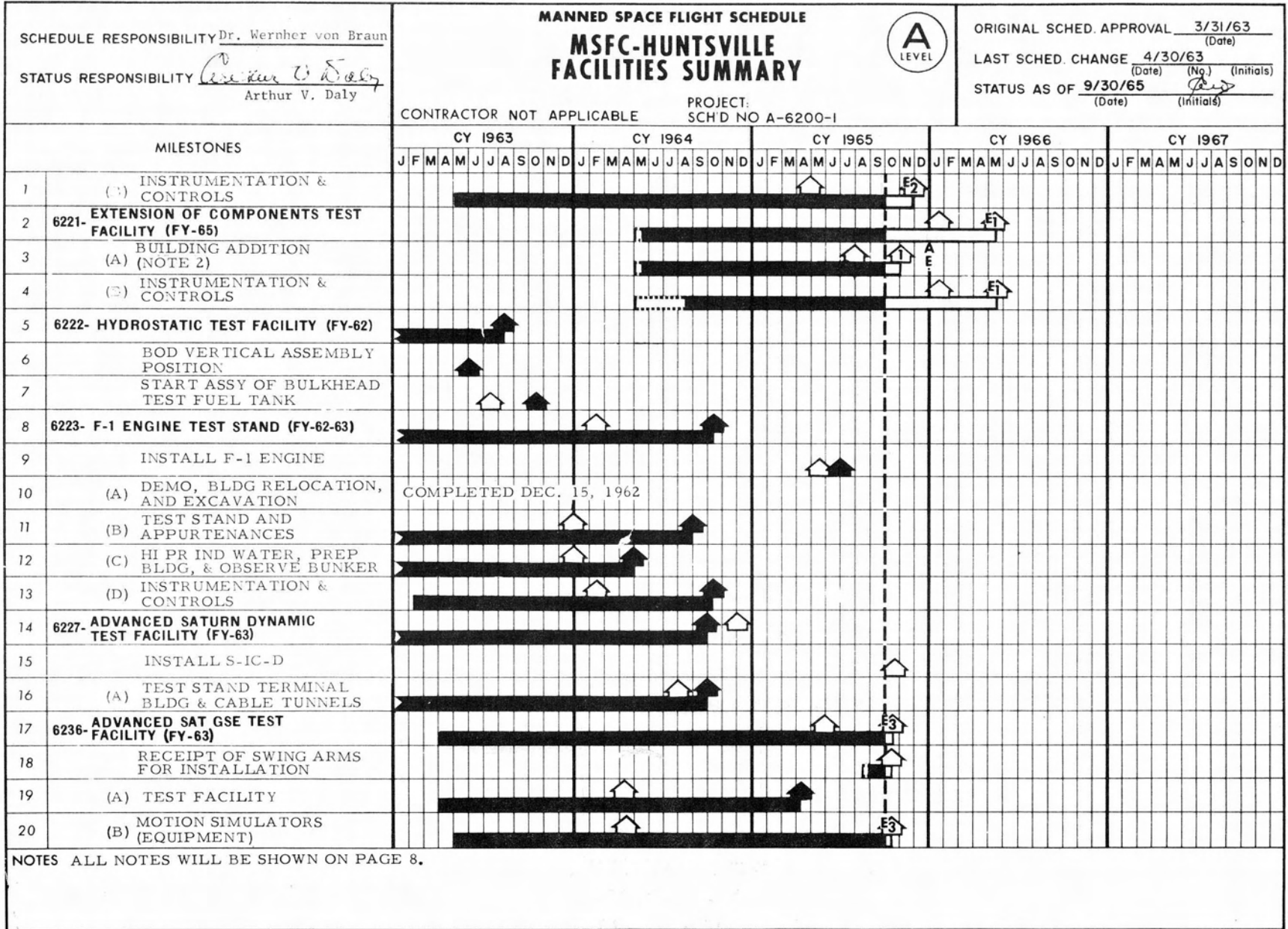
CONTRACTOR NOT APPLICABLE PROJECT: SCHD NO A-6200-1

SCHEDULE RESPONSIBILITY Dr. Wernher von Braun

STATUS RESPONSIBILITY Arthur V. Daly

MILESTONES		CY 1963												CY 1964												CY 1965												CY 1966												CY 1967											
		J	F	M	A	M	J	J	A	S	O	N	D	J	F	M	A	M	J	J	A	S	O	N	D	J	F	M	A	M	J	J	A	S	O	N	D	J	F	M	A	M	J	J	A	S	O	N	D	J	F	M	A	M	J	J	A	S	O	N	D
1	(B) INSTRUMENTATION & CONTROLS	[Bar]												[Bar]												[Bar]												[Bar]												[Bar]											
2	6215- LIQUID HYDROGEN (6219) FACILITY (FY-61-62)	[Bar]												[Bar]												[Bar]												[Bar]												[Bar]											
3	6218- LOAD TEST ANNEX (FY-61-62)	[Bar]												[Bar]												[Bar]												[Bar]												[Bar]											
4	DELIVERY OF FUEL TANK & THRUST STRUCT (S-IC-S)	[Bar]												[Bar]												[Bar]												[Bar]												[Bar]											
5	6220- MODIFICATION OF WEST SIDE OF STATIC TEST STAND (FY-62-63)(NOTE 1)	[Bar]												[Bar]												[Bar]												[Bar]												[Bar]											
6	(A) TEST POSITION AND ANNEX	[Bar]												[Bar]												[Bar]												[Bar]												[Bar]											
7	INSTALL S-IB (NOTE 1)	[Bar]												[Bar]												[Bar]												[Bar]												[Bar]											
8	(B) INSTRUMENTATION & CONTROLS	[Bar]												[Bar]												[Bar]												[Bar]												[Bar]											
9	FIRST FIRING S-IB (NOTE 1)	[Bar]												[Bar]												[Bar]												[Bar]												[Bar]											
10	(C) MODIFICATION FOR F-1 ENGINE TESTS	[Bar]												[Bar]												[Bar]												[Bar]												[Bar]											
11	BEGIN F-1 ENGINE TEST	[Bar]												[Bar]												[Bar]												[Bar]												[Bar]											
12	(D) CONVERSION TO S-IB TEST CONFIG (NOTE 1)	[Bar]												[Bar]												[Bar]												[Bar]												[Bar]											
13	FIRST FIRING S-IB (NOTE 1)	[Bar]												[Bar]												[Bar]												[Bar]												[Bar]											
14	6221- COMPONENT TEST FACILITY (FY-62-63)	[Bar]												[Bar]												[Bar]												[Bar]												[Bar]											
15	(A) SUPPORT BUILDING	[Bar]												[Bar]												[Bar]												[Bar]												[Bar]											
16	(B) F-1 TURBOPUMP TEST STAND	[Bar]												[Bar]												[Bar]												[Bar]												[Bar]											
17	(C) TEST POS CONTROL CENTER & BLDG MOD	[Bar]												[Bar]												[Bar]												[Bar]												[Bar]											
18	(D) INSTRUMENTATION & CONTROLS	[Bar]												[Bar]												[Bar]												[Bar]												[Bar]											
19	6239- ADDITION TO THE COMPONENTS TEST FACILITY (FY-64)	[Bar]												[Bar]												[Bar]												[Bar]												[Bar]											
20	(A) TEST FACILITIES	[Bar]												[Bar]												[Bar]												[Bar]												[Bar]											

NOTES ALL NOTES WILL BE SHOWN ON PAGE 8.

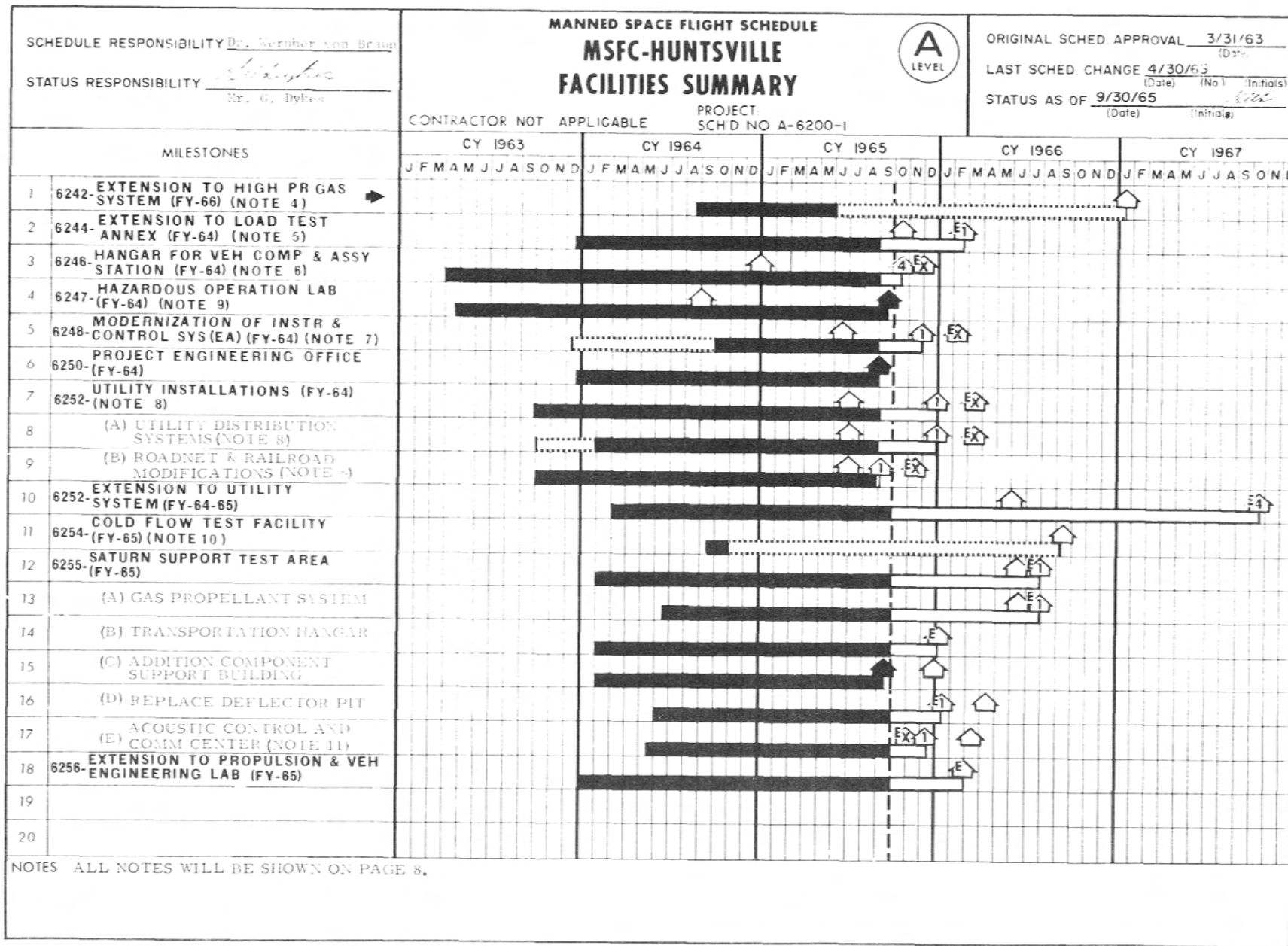


SCHEDULE RESPONSIBILITY <u>Dr. Werner von Braun</u> STATUS RESPONSIBILITY <u>Arthur V. Daly</u> Arthur V. Daly	MANNED SPACE FLIGHT SCHEDULE MSFC-HUNTSVILLE FACILITIES SUMMARY PROJECT: _____ SCH'D NO A-6200-1	(A) LEVEL	ORIGINAL SCHED. APPROVAL <u>3/31/63</u> (Date) LAST SCHED. CHANGE <u>4/30/63</u> (Date) (No.) (Initials) STATUS AS OF <u>9/30/65</u> (Date) (Initials)				
MILESTONES	CONTRACTOR NOT APPLICABLE		CY 1963	CY 1964	CY 1965	CY 1966	CY 1967
			J F M A M J J A S O N D	J F M A M J J A S O N D	J F M A M J J A S O N D	J F M A M J J A S O N D	J F M A M J J A S O N D
1 (C) INSTRUMENTATION & CONTROLS				↑	↑		
2 6236- ADDITION TO SAT V GSE TEST FACILITY (FY-65)(NOTE 3)						↑	↑
3 (A) SUPPORT BLDGS						↑	↑
4 INSTRUMENTATION & (B) CONTROLS (NOTE 3)						↑	↑
5 6241- BARGE DOCK & LOADING FAC.				↑			
6							
7							
8							
9							
10							
11							
12							
13							
14							
15							
16							
17							
18							
19							
20							
NOTES ALL NOTES WILL BE SHOWN ON PAGE 8.							

MSFC - Form 1275-5 (October 1963)

MILESTONES		CY 1963												CY 1964												CY 1965												CY 1966												CY 1967											
		J	F	M	A	M	J	J	A	S	O	N	D	J	F	M	A	M	J	J	A	S	O	N	D	J	F	M	A	M	J	J	A	S	O	N	D	J	F	M	A	M	J	J	A	S	O	N	D	J	F	M	A	M	J	J	A	S	O	N	D
1	6213- EXTENSION OF PRIMARY UTILITY (FY-62)	[Bar chart showing activity from late 1963 to early 1964]												[Bar chart showing activity from early 1964 to mid-1964]																																															
2	6228- ENGINEERING & ADMINISTRATION BUILDING (FY-62-63)	[Bar chart showing activity from late 1963 to early 1964]												[Bar chart showing activity from early 1964 to mid-1964]																																															
3	6229- INSTRUMENT LABORATORY (FY-62-63)	[Bar chart showing activity from late 1963 to early 1964]												[Bar chart showing activity from early 1964 to mid-1964]																																															
4	6230- ADDITION TO COMPUTATION DIVISION BUILDING (FY-63)	[Bar chart showing activity from late 1963 to early 1964]												[Bar chart showing activity from early 1964 to mid-1964]												[Bar chart showing activity from mid-1964 to late 1964]																																			
5	6231- COMPONENTS & SUBASSEMBLY ACCEPTANCE BUILDING (FY-63)	[Bar chart showing activity from late 1963 to early 1964]												[Bar chart showing activity from early 1964 to mid-1964]												[Bar chart showing activity from mid-1964 to late 1964]																																			
6	6232- HYDRAULIC TEST FACILITY (FY-63)	[Bar chart showing activity from late 1963 to early 1964]												[Bar chart showing activity from early 1964 to mid-1964]																																															
7	6233- LOW TEMPERATURE FACILITY (FY-63)	[Bar chart showing activity from late 1963 to early 1964]												[Bar chart showing activity from early 1964 to mid-1964]																																															
8	6234- ENGINEERING BUILDING (FY-63-64)	[Bar chart showing activity from late 1963 to early 1964]												[Bar chart showing activity from early 1964 to mid-1964]																																															
9	6234- TEST ENGINEERING BUILDING EXTENSION (FY-66)																																					[Bar chart showing activity from late 1965 to early 1966]												[Bar chart showing activity from early 1966 to mid-1966]											
10	6235- UTILITY INSTALLATION (FY-63)	[Bar chart showing activity from late 1963 to early 1964]												[Bar chart showing activity from early 1964 to mid-1964]												[Bar chart showing activity from mid-1964 to late 1964]																																			
11	(A) SATURN V ROAD	[Bar chart showing activity from late 1963 to early 1964]												[Bar chart showing activity from early 1964 to mid-1964]												[Bar chart showing activity from mid-1964 to late 1964]																																			
12	(B) COMMUNICATIONS	[Bar chart showing activity from late 1963 to early 1964]												[Bar chart showing activity from early 1964 to mid-1964]												[Bar chart showing activity from mid-1964 to late 1964]																																			
13	(C) UTILITY DISTRIBUTION SYSTEMS	[Bar chart showing activity from late 1963 to early 1964]												[Bar chart showing activity from early 1964 to mid-1964]												[Bar chart showing activity from mid-1964 to late 1964]																																			
14	6237- ACCELERATION TEST & CALIB FACILITY (FY-64)	[Bar chart showing activity from late 1963 to early 1964]												[Bar chart showing activity from early 1964 to mid-1964]												[Bar chart showing activity from mid-1964 to late 1964]												[Bar chart showing activity from late 1965 to early 1966]												[Bar chart showing activity from early 1966 to mid-1966]											
15	6238- ACOUSTIC MODEL TEST FACILITY (FY-64)	[Bar chart showing activity from late 1963 to early 1964]												[Bar chart showing activity from early 1964 to mid-1964]												[Bar chart showing activity from mid-1964 to late 1964]												[Bar chart showing activity from late 1965 to early 1966]												[Bar chart showing activity from early 1966 to mid-1966]											
16	(A) TEST FACILITIES	[Bar chart showing activity from late 1963 to early 1964]												[Bar chart showing activity from early 1964 to mid-1964]												[Bar chart showing activity from mid-1964 to late 1964]												[Bar chart showing activity from late 1965 to early 1966]												[Bar chart showing activity from early 1966 to mid-1966]											
17	(B) INSTRUMENTATION & CONTROLS	[Bar chart showing activity from late 1963 to early 1964]												[Bar chart showing activity from early 1964 to mid-1964]												[Bar chart showing activity from mid-1964 to late 1964]												[Bar chart showing activity from late 1965 to early 1966]												[Bar chart showing activity from early 1966 to mid-1966]											
18	6240- ADDITIONS TO TEST SUPPORT SHOP (FY-64)	[Bar chart showing activity from late 1963 to early 1964]												[Bar chart showing activity from early 1964 to mid-1964]												[Bar chart showing activity from mid-1964 to late 1964]												[Bar chart showing activity from late 1965 to early 1966]												[Bar chart showing activity from early 1966 to mid-1966]											
19	6242- EXPANSION & MODERNIZATION OF HI PR GAS & PRO SYS (FY-64)	[Bar chart showing activity from late 1963 to early 1964]												[Bar chart showing activity from early 1964 to mid-1964]												[Bar chart showing activity from mid-1964 to late 1964]												[Bar chart showing activity from late 1965 to early 1966]												[Bar chart showing activity from early 1966 to mid-1966]											
20																																																													

NOTES



SCHEDULE RESPONSIBILITY <u>Dr. Wernher von Braun</u> STATUS RESPONSIBILITY <u><i>W. G. Dykes</i></u> Mr. G. Dykes			MANNED SPACE FLIGHT SCHEDULE MSFC-HUNTSVILLE FACILITIES SUMMARY			A LEVEL	ORIGINAL SCHED. APPROVAL <u>3/31/63</u> <small>(Date)</small>	LAST SCHED. CHANGE <u>4/30/63</u> <small>(Date) (No.) (Initials)</small>	STATUS AS OF <u>9/30/65</u> <small>(Date) (Initials)</small>																													
			CONTRACTOR NOT APPLICABLE			PROJECT: SCH'D NO A-6200-1/1																																
MILESTONES			CY 1963	CY 1964	CY 1965	CY 1966	CY 1967																															
			J	F	M	A	M	J	J	A	S	O	N	D	J	F	M	A	M	J	J	A	S	O	N	D	J	F	M	A	M	J	J	A	S	O	N	D
1	6258-	ADDITIONS TO MATERIALS LABORATORY (FY-66)																																				
2	6259-	NON DESTRUCTIVE TESTING LABORATORY (FY-66)																																				
3	6261-	LOX STORAGE FACILITY FOR F-1 STAND (FY-66) (NOTE 4)																																				
4	6263-	ADDITION TO COMMUNICATIONS BUILDING (FY-64)																																				
5																																						
6																																						
7																																						
8																																						
9																																						

MILESTONES			CY 1960	CY 1961	CY 1962	CY 1963	CY 1964																															
			J	F	M	A	M	J	J	A	S	O	N	D	J	F	M	A	M	J	J	A	S	O	N	D	J	F	M	A	M	J	J	A	S	O	N	D
1	6204-	PRESSURE TEST CELL. BLDG. 4708																																				
2	6205-	EXT. TO ASSEMBLY BLDG. 4705																																				
3	6206-	ADDITION TO ENGINEERING BLDG. 4610																																				
4	6207-	COMPLETION OF G & C LAB. 4487																																				
5	6208-	ADDITION TO FAB LAB, BLDG. 4712																																				
6	6209-	ADDITION TO CHECKOUT BLDG. 4808																																				
7	6210-	EXT. OF PRIMARY ELECTRIC DISTRIBUTION SYSTEM																																				
8	6212-	EXTENSION TO ENGINEERING BLDG.																																				
9																																						

MSFC - Form 1-75-4 (October 1963)

SCHEDULE RESPONSIBILITY _____ STATUS RESPONSIBILITY _____	MANNED SPACE FLIGHT SCHEDULE MSFC-HUNTSVILLE NOTES PROJECT: _____ SCHD NO _____ CONTRACTOR _____	ORIGINAL SCHED. APPROVAL _____ (Date) LAST SCHED. CHANGE _____ (Date) (No.) (Initials) STATUS AS OF _____ (Date) (Initials)
--	--	---

NOTES FOR OCTOBER SUBMISSION

1. A PLAN HAS NOT BEEN DEVELOPED TO CONVERT THE STAND TO S-IB USE. WHEN AND IF THE PLAN IS DEVELOPED SCHEDULES WILL BE SUBMITTED.
2. CONTRACTOR NOT MAINTAINING SCHEDULES. ADJUSTMENT TO BE SHOWN ON FUTURE SUBMISSION.
3. COMPLETION OF SCOPE OF WORK TOOK LONGER THAN ANTICIPATED. CONTRACT COMPLETION ADJUSTED ACCORDINGLY.
4. DELETED BY CONGRESSIONAL ACTION.
5. CONSTRUCTION CONTRACTOR HAS SLIPPED APPROXIMATELY 2 MONTHS BEHIND SCHEDULE. PROJECT COMPLETION DEPENDENT ON EQUIPMENT DELIVERY & INSTALLATION AND WILL NOT SLIP BECAUSE OF CONSTRUCTION SLIP.
6. CONSTRUCTION CONTRACT EXTENDED DUE TO ADDED CHANGE ITEMS.
7. ALL WORK TO BE COMPLETE ON INITIAL SCHEDULE EXCEPT FOR ONE CABLE INSTALLATION INCREMENT WHICH IS SCHEDULED FOR FEBRUARY COMPLETION.
8. THE RFQ RESPONSE PERIOD FOR EMERGENCY POWER HAS BEEN EXTENDED FOR ADDITIONAL QUOTATIONS. ROAD CONSTRUCTION EXTENDED FOR CHANGES ON DRAINAGE AND BURIED HP AIRLINE.
9. FACILITY OPERATIONAL EXCEPT FOR LOX FLOW WEIGHING SYSTEM.
10. WORK HAS BEEN SUSPENDED SINCE A VALID NEED HAS NOT BEEN ESTABLISHED.
11. EARLY COMPLETION BASED ON LATEST CONSTRUCTION CONTRACT PERIOD.

SCHEDULE RESPONSIBILITY Dr. Wernher von Braun

STATUS RESPONSIBILITY J.R. Lada
J. R. Lada

MANNED SPACE FLIGHT SCHEDULE
MSFC-HUNTSVILLE
CONSTRUCTION OF FACILITIES
FUNDING SCHEDULE

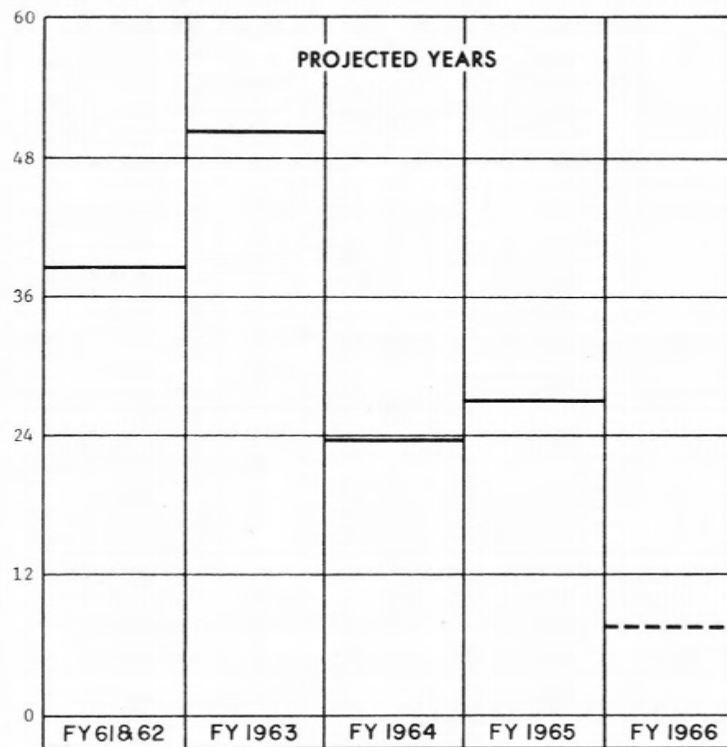
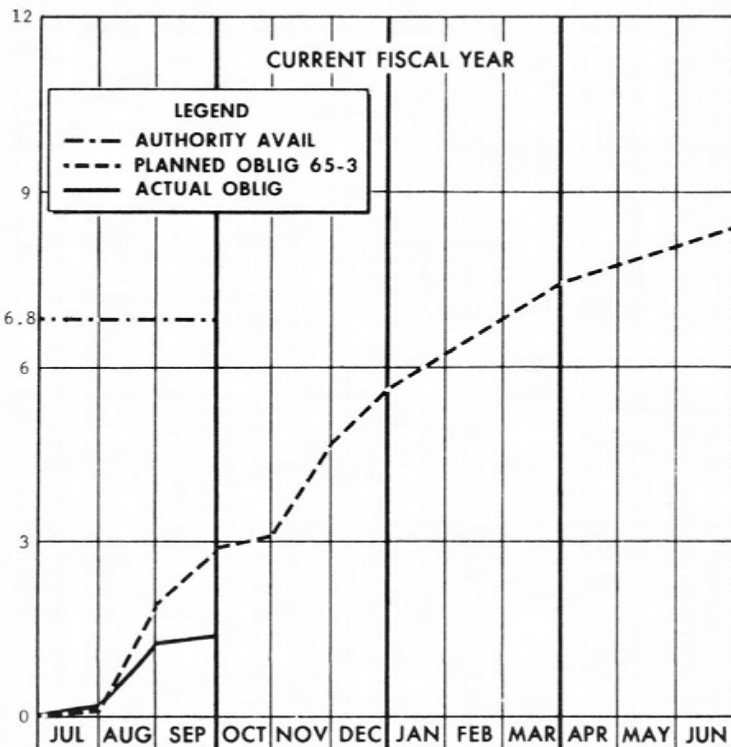


ORIGINAL SCHED. APPROVAL _____ (Date)
LAST SCHED. CHANGE 9/30/65 (24) (Date) (No.) (Initials)
STATUS AS OF 9/30/65 (Date) (Initials)

CONTRACTOR

PROJECT:
SCH'D NO: A-6400-3/24

OBLIGATIONS (IN MILLIONS)



PLANNED	.013	1.995	2.894	3.096	4.666	5.635			7.437			8.396
ACT./EST.	.077	1.255	1.367									
PLANNED	.013	1.982	.899	.202	1.570	.969			1.802			.959
ACT./EST.	.077	1.178	.112									

PLANNED					8,396,000
ACT./EST.	38,490,000	50,095,000	23,760,000	27,083,000	
PLANNED					147,824,000
ACT./EST.	38,490,000	88,585,000	112,345,000	139,428,000	

NOTES

SCHEDULE RESPONSIBILITY _____

STATUS RESPONSIBILITY _____

MANNED SPACE FLIGHT SCHEDULE

**MSFC-HUNTSVILLE
EXPLANATIONS**



ORIGINAL SCHED. APPROVAL _____ (Date)

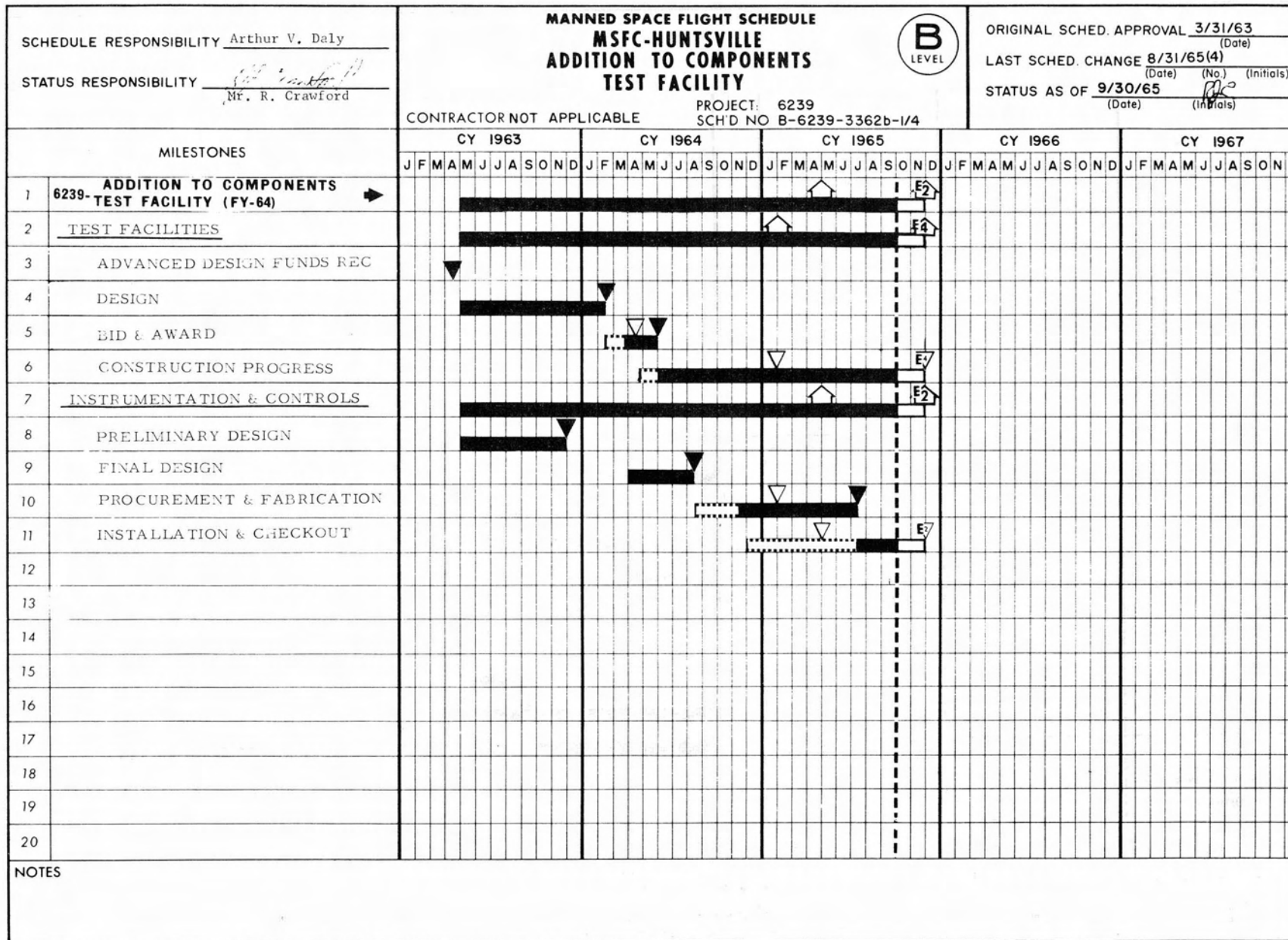
LAST SCHED. CHANGE _____ (Date) (No.) (Initials)

STATUS AS OF _____ (Date) (Initials)

CONTRACTOR

PROJECT:
SCH'D NO

	<u>PROJECT</u>	<u>AMOUNT OF VARIANCE (In Millions)</u>	<u>REMARKS</u>
6221	Ext. of Components Test Fac. (FY-65)	.126	Contractor late in submitting Proposals for Instal & C/O of Tech Systems. Contract Modif will be awarded in November.
6236	Ext. to Saturn V GSE Test Fac. (FY-65)	.202	Scope of work for Instal & C/O of Tech Systems not completed on schedule. Contract Modif will be awarded in November.
6256	Ext. to P&VE Lab (FY-65)	.116	Equipment requirements not finalized as scheduled. Will be November Obligation.
6252	Utility Installation (FY-64)	.150	Extended date for responses to RFQ & Evaluation of proposals for emergency power units. Contract will be awarded in November
	(FY-65)	.727	Transferred to Bureau of Public Roads in FY-65, not recorded as an Obligation.
6229	Instrument Lab (FY-64)	.064	Contractor's claim not settled as soon as anticipated.



SCHEDULE RESPONSIBILITY <u>Arthur V. Daly</u> STATUS RESPONSIBILITY <u>Mr. R. Crawford</u>		MANNED SPACE FLIGHT SCHEDULE MSFC-HUNTSVILLE EXTENSION OF COMPONENTS TEST FACILITY		PROJECT: 6221 SCH'D NO B-6221-3362-1/6		ORIGINAL SCHED. APPROVAL <u>3/31/63</u> (Date)		LAST SCHED. CHANGE <u>10/31/64 (6)</u> (Date) (No.) (Initials)		STATUS AS OF <u>9/30/65</u> (Date) (Initials)																																							
						CY 1964		CY 1965		CY 1966		CY 1967		CY 1968																																			
MILESTONES		J	F	M	A	M	J	J	A	S	O	N	D	J	F	M	A	M	J	J	A	S	O	N	D	J	F	M	A	M	J	J	A	S	O	N	D	J	F	M	A	M	J	J	A	S	O	N	D
1	6221- EXTENSION OF COMPONENTS TEST FACILITY (FY-65) →	[Gantt bar spanning from start of CY 1964 to end of CY 1966]																																															
2	BUILDING ADDITION (NOTE 2)	[Gantt bar spanning from start of CY 1964 to end of CY 1965]																																															
3	DESIGN	[Gantt bar spanning from start of CY 1964 to end of CY 1965]																																															
4	RECEIPT OF PROJECT FUNDS	[Gantt bar spanning from start of CY 1964 to end of CY 1965]																																															
5	BID & AWARD	[Gantt bar spanning from start of CY 1964 to end of CY 1965]																																															
6	CONSTRUCTION PROGRESS (NOTE 2)	[Gantt bar spanning from start of CY 1964 to end of CY 1965]																																															
7	INSTRUMENTATION & CONTROLS	[Gantt bar spanning from start of CY 1964 to end of CY 1966]																																															
8	DESIGN	[Gantt bar spanning from start of CY 1964 to end of CY 1965]																																															
9	PROCUREMENT & FABRICATION	[Gantt bar spanning from start of CY 1965 to end of CY 1966]																																															
10	INSTALLATION & CHECKOUT	[Gantt bar spanning from start of CY 1966 to end of CY 1966]																																															
11																																																	
12																																																	
13																																																	
14																																																	
15																																																	
16																																																	
17																																																	
18																																																	
19																																																	
20																																																	
NOTES		ALL NOTES WILL BE SHOWN ON PAGE 8.																																															

SCHEDULE RESPONSIBILITY <u>Arthur V. Daly</u>		MANNED SPACE FLIGHT SCHEDULE MSFC-HUNTSVILLE ADVANCED SATURN GSE TEST FACILITY		PROJECT: 6236 SCHD NO B-6236-3362ab-1/5		ORIGINAL SCHED. APPROVAL <u>3/31/63</u> (Date)		LAST SCHED. CHANGE <u>5/31/65(5)</u> (Date) (No.) (Initials)		STATUS AS OF <u>9/30/65</u> (Date) (Initials)																																							
STATUS RESPONSIBILITY <u>Mr. R. Crawford</u>		CONTRACTOR NOT APPLICABLE		CY 1963		CY 1964		CY 1965		CY 1966		CY 1967																																					
MILESTONES		J	F	M	A	M	J	J	A	S	O	N	D	J	F	M	A	M	J	J	A	S	O	N	D	J	F	M	A	M	J	J	A	S	O	N	D	J	F	M	A	M	J	J	A	S	O	N	D
1	6236-ADV SAT GSE TEST FACILITY →	[Solid bar from Jan 1963 to Dec 1965]																																															
2	RECEIPT OF SWING ARMS	[Dashed line from Dec 1965 to Dec 1965]																																															
3	S-1B COMMAND MODULE COMPLEX 34	[House icon in Dec 1965]																																															
4	S-1B COMMAND MODULE COMPLEX 37	[House icon in Aug 1965]																																															
5	S-V COMMAND MODULE COMPLEX 39	[House icon in Oct 1965]																																															
6	SERVICE MODULE	[House icon in Oct 1965]																																															
7	S-IVB FWD	[House icon in Aug 1965]																																															
8	S-IVB AFT	[House icon in Aug 1965]																																															
9	S-II FWD	[House icon in Aug 1965]																																															
10	S-II AFT	[House icon in Aug 1965]																																															
11	S-II INTERMEDIATE	[House icon in Aug 1965]																																															
12	S-1C INTERTANK	[House icon in Aug 1965]																																															
13	S-1C FWD	[House icon in Aug 1965]																																															
14	TEST FACILITIES	[Solid bar from Jan 1963 to Dec 1965]																																															
15	DESIGN & CONSTRUCTION (TEST AREA)	[Solid bar from Jan 1963 to Dec 1965]																																															
16	MOTION SIMULATORS (EQUIPMENT)	[Solid bar from Jan 1963 to Dec 1965]																																															
17	PROCUREMENT AND FABRICATION	[Solid bar from Jan 1963 to Dec 1965]																																															
18	INSTALLATION AND CHECKOUT	[Solid bar from Jan 1963 to Dec 1965]																																															
19	S-1B & S-V COMMAND MODULE	[House icon in Oct 1965]																																															
20	SERVICE MODULE	[House icon in Oct 1965]																																															
NOTES																																																	



MSFC Form 1475-5 (Rev. 1-63)

SCHEDULE RESPONSIBILITY <u>Arthur V. Daly</u>		MANNED SPACE FLIGHT SCHEDULE MSFC-HUNTSVILLE ADDITION TO SATURN V GSE TEST FACILITY		PROJECT: 6236 SCH'D NO B-6236-3362a-1/7		ORIGINAL SCHED. APPROVAL <u>3/31/63</u> (Date)		LAST SCHED. CHANGE <u>5/31/65 (7)</u> (Date) (No.) (Initials)		STATUS AS OF <u>9/30/65</u> (Date) (Initials)																																					
STATUS RESPONSIBILITY <u>Mr. R. Crawford</u>		CONTRACTOR NOT APPLICABLE		CY 1964		CY 1965		CY 1966		CY 1967		CY 1968																																			
		J	F	M	A	M	J	J	A	S	O	N	D	J	F	M	A	M	J	J	A	S	O	N	D	J	F	M	A	M	J	J	A	S	O	N	D	J	F	M	A	M	J	J	A	S	O
1	6236-SUPPORT BUILDINGS →	[Gantt bar from Jan 1964 to Dec 1965]																																													
2	CRITERIA	[Gantt bar from Mar 1964 to Jun 1964]																																													
3	RFQ & AWARD	[Gantt bar from May 1964 to Aug 1964]																																													
4	DESIGN	[Gantt bar from Jul 1964 to Oct 1964]																																													
5	IFB & AWARD	[Gantt bar from Sep 1964 to Dec 1964]																																													
6	CONSTRUCTION	[Gantt bar from Jan 1965 to Dec 1965]																																													
7	BOD HP TEST FACILITY	[Gantt bar from Jan 1965 to Dec 1965]																																													
8	COMPLETE HP TEST FACILITY	[Gantt bar from Jan 1965 to Dec 1965]																																													
9	BOD ASSEMBLY BUILDING	[Gantt bar from Jan 1965 to Dec 1965]																																													
10	COMPLETION OF ASSEMBLY BUILDING	[Gantt bar from Jan 1965 to Dec 1965]																																													
11	BOD BLOCKHOUSE	[Gantt bar from Jan 1965 to Dec 1965]																																													
12	COMPLETION OF BLOCKHOUSE	[Gantt bar from Jan 1965 to Dec 1965]																																													
13	TAIL SERVICE MAST FACILITY	[Gantt bar from Jan 1965 to Dec 1965]																																													
14	BOD TAIL SERVICE MAST FACILITY	[Gantt bar from Jan 1965 to Dec 1965]																																													
15																																															
16																																															
17																																															
18																																															
19																																															
20																																															
NOTES																																															

OSMF Form 175-7 (October 1963)

SCHEDULE RESPONSIBILITY <u>Arthur V. Daly</u> STATUS RESPONSIBILITY <u><i>R. Crawford</i></u> Mr. R. Crawford		MANNED SPACE FLIGHT SCHEDULE MSFC-HUNTSVILLE ADDITION TO SATURN V GSE TEST FACILITY												(B) LEVEL		ORIGINAL SCHED. APPROVAL <u>3/31/63</u> (Date)						LAST SCHED. CHANGE <u>9/30/65(5)</u> (Date) (No.) (Initials)													
		CONTRACTOR NOT APPLICABLE						PROJECT: 6236 SCH'D NO B-6236-3362b-1/5						STATUS AS OF <u>9/30/65</u> (Date) <u><i>RC</i></u> (Initials)																					
MILESTONES		CY 1964				CY 1965				CY 1966				CY 1967				CY 1968																	
		J	F	M	A	M	J	J	A	S	O	N	D	J	F	M	A	M	J	J	A	S	O	N	D	J	F	M	A	M	J	J	A	S	O
1	6236 - INSTRUMENTATION & CONTROLS (NOTE 3) →	[Gantt bar from Jan 1964 to Feb 1966]																																	
2	CRITERIA	[Gantt bar from Mar 1964 to Apr 1964]																																	
3	RFQ & AWARD					[Gantt bar from May 1964 to Jun 1964]																													
4	DESIGN					[Gantt bar from Jul 1964 to Aug 1964]																													
5	PROCUREMENT & FABRICATION					[Gantt bar from Sep 1964 to Oct 1964]																													
6	INSTALLATION & C/O (NOTE 3)									[Gantt bar from Nov 1965 to Dec 1965]																									
7	AS BUILT DRAWINGS (NOTE 3)									[Gantt bar from Jan 1966 to Feb 1966]																									
8																																			
9																																			
10																																			
11																																			
12																																			
13																																			
14																																			
15																																			
16																																			
17																																			
18																																			
19																																			
20																																			
NOTES ALL NOTES WILL BE SHOWN ON PAGE 8.																																			

SMET - Form 1975-1 (Rev. 6-9-63 1964)

SCHEDULE RESPONSIBILITY <u>Mr. G. Dykes</u> STATUS RESPONSIBILITY <u>Mr. C. Coker</u>	MANNED SPACE FLIGHT SCHEDULE MSFC-HUNTSVILLE TEST ENGINEERING BUILDING EXTENTION PROJECT: 6234 SCH'D NO B-6234-3062-1	(B) LEVEL	ORIGINAL SCHED. APPROVAL <u>9/20/64</u> (Date) LAST SCHED. CHANGE _____ (Date) (No.) (Initials) STATUS AS OF <u>9/30/65</u> (Date) (Initials)
MILESTONES	CONTRACTOR NOT APPLICABLE		
	CY 1964	CY 1965	CY 1966
	J F M A M J J A S O N D	J F M A M J J A S O N D	J F M A M J J A S O N D
1	6234- TEST ENGINEERING BUILDING EXTENTION (FY-68) →		←
2	CRITERIA		
3	PRELIMINARY DESIGN		
4	FINAL DESIGN		
5	BID & AWARD		
6	CONSTRUCTION		
7	ACTIVATION		
8			
9			
10			
11			
12			
13			
14			
15			
16			
17			
18			
19			
20			
NOTES			

SCHEDULE RESPONSIBILITY <u>Mr. G. Dykes</u> STATUS RESPONSIBILITY <u>Mr. J. Martin</u>		MANNED SPACE FLIGHT SCHEDULE MSFC-HUNTSVILLE ACCELERATION TEST & CALIBRATION FACILITY		PROJECT: 6237 SCH'D NO B-6237-3362-1/5		ORIGINAL SCHED. APPROVAL <u>3/31/63</u> <small>(Date)</small>		LAST SCHED. CHANGE <u>1/31/65 (1)</u> <small>(Date) (No.) (Initials)</small>		STATUS AS OF <u>9/30/65</u> <small>(Date) (Initials)</small>																																																			
						CONTRACTOR NOT APPLICABLE		CY 1963		CY 1964		CY 1965		CY 1966		CY 1967																																													
MILESTONES		J	F	M	A	M	J	J	A	S	O	N	D	J	F	M	A	M	J	J	A	S	O	N	D	J	F	M	A	M	J	J	A	S	O	N	D	J	F	M	A	M	J	J	A	S	O	N	D	J	F	M	A	M	J	J	A	S	O	N	D
1	6237- ACCELERATION TEST & CALIB FACILITY (FY-64) →	[Gantt bar from start of 1963 to end of 1965]																																																											
2	RECEIVE ADVANCED DESIGN FUNDS ▼	[Gantt bar from start of 1963 to start of 1964]																																																											
3	DESIGN ▼	[Gantt bar from start of 1964 to start of 1965]																																																											
4	RECEIVE CONST FUNDS ▼	[Gantt bar from start of 1965 to start of 1966]																																																											
5	ADVERTISE & AWARD ▼	[Gantt bar from start of 1966 to start of 1967]																																																											
6	CONSTRUCTION ▼	[Gantt bar from start of 1967 to start of 1968]																																																											
7	PROCURE EQUIPMENT ▼	[Gantt bar from start of 1968 to start of 1969]																																																											
8	CHECKOUT ▼	[Gantt bar from start of 1969 to start of 1970]																																																											
9																																																													
10																																																													
11																																																													
12																																																													
13																																																													
14																																																													
15																																																													
16																																																													
17																																																													
18																																																													
19																																																													
20																																																													
NOTES																																																													

SCHEDULE RESPONSIBILITY <u>Mr. G. W. Dykes</u> STATUS RESPONSIBILITY <u>Mr. C. Coker</u>		MANNED SPACE FLIGHT SCHEDULE MSFC-HUNTSVILLE ACOUSTIC MODEL TEST FACILITY			PROJECT: 6238 SCH'D NO B-6238-3362ab-1/1		ORIGINAL SCHED. APPROVAL <u>3/31/63</u> (Date) LAST SCHED. CHANGE <u>4/30/65 (1)</u> (Date) (No.) (Initials) STATUS AS OF <u>9/30/65</u> (Date) (Initials)		CY 1963												CY 1964												CY 1965												CY 1966												CY 1967											
									J	F	M	A	M	J	J	A	S	O	N	D	J	F	M	A	M	J	J	A	S	O	N	D	J	F	M	A	M	J	J	A	S	O	N	D	J	F	M	A	M	J	J	A	S	O	N	D	J	F	M	A	M	J	J	A	S	O	N	D
1	6238-ACOUSTIC MODEL TEST FACILITY																																																																			
2	TEST FACILITY																																																																			
3	DESIGN																																																																			
4	BID & AWARD																																																																			
5	CONSTRUCTION																																																																			
6	EQUIPMENT INSTALLATION																																																																			
7	INSTRUMENTATION & CONTROLS																																																																			
8	PRELIMINARY DESIGN																																																																			
9	FINAL DESIGN PROCUREMENT FAB																																																																			
10	INSTALLATION & CHECKOUT																																																																			
11																																																																				
12																																																																				
13																																																																				
14																																																																				
15																																																																				
16																																																																				
17																																																																				
18																																																																				
19																																																																				
20																																																																				
NOTES																																																																				

SCHEDULE RESPONSIBILITY <u>Mr. G. Dykes</u> STATUS RESPONSIBILITY <u>Mr. C. Coker</u>		MANNED SPACE FLIGHT SCHEDULE MSFC-HUNTSVILLE ADDITIONS TO TEST SUPPORT SHOP												ORIGINAL SCHED. APPROVAL <u>3/31/63</u> (Date) LAST SCHED. CHANGE <u>8/31/65(4)</u> (Date) (No.) (Initials) STATUS AS OF <u>9/30/65</u> <u>C.P.C.</u> (Date) (Initials)																							
MILESTONES		CY 1963				CY 1964				CY 1965				CY 1966				CY 1967																			
		J	F	M	A	M	J	J	A	S	O	N	D	J	F	M	A	M	J	J	A	S	O	N	D	J	F	M	A	M	J	J	A	S	O	N	D
1	6240- ADDITIONS TO TEST SUPPORT SHOP (FY-64) →					■	■	■	■	■	■	■	■	■	■	■	■	■	■	■	■	■	■	■	■	■	■	■	■	■	■	■	■	■	■	■	■
2	DESIGN					▽	▽	▽	▽	▽	▽	▽	▽	▽	▽	▽	▽	▽	▽	▽	▽	▽	▽	▽	▽	▽	▽	▽	▽	▽	▽	▽	▽	▽	▽	▽	▽
3	BID AND AWARD					■	■	■	■	■	■	■	■	■	■	■	■	■	■	■	■	■	■	■	■	■	■	■	■	■	■	■	■	■	■	■	■
4	CONSTRUCTION PROGRESS					■	■	■	■	■	■	■	■	■	■	■	■	■	■	■	■	■	■	■	■	■	■	■	■	■	■	■	■	■	■	■	■
5																																					
6																																					
7																																					
8																																					
9																																					
10																																					
11																																					
12																																					
13																																					
14																																					
15																																					
16																																					
17																																					
18																																					
19																																					
20																																					
NOTES																																					

MSFC Form 1970-5 (Rev. 4-64)

SCHEDULE RESPONSIBILITY <u>Mr. G. Dykes</u> STATUS RESPONSIBILITY <u><i>C. Coker</i></u> Mr. C. Coker	MANNED SPACE FLIGHT SCHEDULE MSFC-HUNTSVILLE EXPANSION & MODERNIZATION OF HI PR GAS & PROP SYS PROJECT: 6242 SCH'D NO B-6242-3362-1/4	<div style="border: 1px solid black; border-radius: 50%; width: 30px; height: 30px; display: flex; align-items: center; justify-content: center; margin: 0 auto;"> <div style="font-size: 20px; font-weight: bold; margin: 0 5px;">B</div> <div style="font-size: 8px; margin: 0 5px;">LEVEL</div> </div>	ORIGINAL SCHED. APPROVAL <u>3/31/63</u> <small>(Date)</small> LAST SCHED. CHANGE <u>8/31/65 (4)</u> <small>(Date) (No.) (Initials)</small> STATUS AS OF <u>9/30/65</u> <small>(Date) (Initials)</small>	
MILESTONES	CONTRACTOR NOT APPLICABLE			
	CY 1963 CY 1964 CY 1965 CY 1966 CY 1967 J F M A M J J A S O N D J F M A M J J A S O N D J F M A M J J A S O N D J F M A M J J A S O N D J F M A M J J A S O N D			
1 6242-EXP & MODERNIZATION OF HI PR GAS & PROP SYS(FY-64)				
2 DESIGN				
3 BID AND AWARD				
4 CONSTRUCTION PROGRESS				
5				
6				
7				
8				
9				
10				
11				
12				
13				
14				
15				
16				
17				
18				
19				
20				
NOTES				

SCHEDULE RESPONSIBILITY <u>Mr. G. Dykes</u> STATUS RESPONSIBILITY <u>Mr. I. Lawson</u>	MANNED SPACE FLIGHT SCHEDULE MSFC-HUNTSVILLE HANGER FOR VEHICLE COMPONENTS & ASSEMBLY STATION PROJECT: 6246 SCHD NO B-6246-3362-1/5	<div style="border: 1px solid black; border-radius: 50%; width: 30px; height: 30px; display: flex; align-items: center; justify-content: center; margin: 0 auto;"> <div style="font-size: 20px; font-weight: bold; margin-right: 5px;">B</div> <div style="font-size: 8px; font-weight: bold; margin-right: 5px;">LEVEL</div> </div>	ORIGINAL SCHED. APPROVAL <u>3/31/63</u> <small>(Date)</small> LAST SCHED. CHANGE <u>9/30/65 (5)</u> <small>(Date) (No.) (Initials)</small> STATUS AS OF <u>9/30/65</u> <small>(Date) (Initials)</small>
MILESTONES	CONTRACTOR NOT APPLICABLE		
	CY 1963	CY 1964	CY 1965
	J F M A M J J A S O N D	J F M A M J J A S O N D	J F M A M J J A S O N D
1	6246- HANGAR FOR VEH COMP & ASSY STATION (FY-64) (NOTE 6) →		
2	ADVANCED DESIGN FUNDS REC		
3	DESIGN		
4	RECEIVE CONSTRUCTION FUNDS		
5	BID AND AWARD		
6	CONSTRUCTION PROGRESS (NOTE 6)		
7			
8			
9			
10			
11			
12			
13			
14			
15			
16			
17			
18			
19			
20			
NOTES ALL NOTES WILL BE SHOWN ON PAGE 8.			

SCHEDULE RESPONSIBILITY <u>Mr. G. Dykes</u> STATUS RESPONSIBILITY <u>Mr. C. Coker</u>		MANNED SPACE FLIGHT SCHEDULE MSFC-HUNTSVILLE MODERNIZATION OF INSTR & CONTROL SYSTEM (EAST AREA) PROJECT: 6248 SCHED NO B-6248-3362-1/4												ORIGINAL SCHED. APPROVAL <u>3/31/63</u> <small>(Date)</small> LAST SCHED. CHANGE <u>9/30/65(4)</u> <small>(Date) (No.) (Initials)</small> STATUS AS OF <u>9/30/65</u> <small>(Date) (Initials)</small>																																															
MILESTONES		CY 1963			CY 1964			CY 1965			CY 1966			CY 1967																																															
		J	F	M	A	M	J	J	A	S	O	N	D	J	F	M	A	M	J	J	A	S	O	N	D	J	F	M	A	M	J	J	A	S	O	N	D	J	F	M	A	M	J	J	A	S	O	N	D	J	F	M	A	M	J	J	A	S	O	N	D
1	6248-MODERNIZATION OF INSTR & CONTROL SYS (EAST AREA) (NOTE 7)																																																												
2	DESIGN, PROCUREMENT & FABRICATION																																																												
3	INSTALLATION & C/O (NOTE 7)																																																												
4																																																													
5																																																													
6																																																													
7																																																													
8																																																													
9																																																													
10																																																													
11																																																													
12																																																													
13																																																													
14																																																													
15																																																													
16																																																													
17																																																													
18																																																													
19																																																													
20																																																													
NOTES ALL NOTES WILL BE SHOWN ON PAGE 8.																																																													

MILESTONES		CY 1963												CY 1964												CY 1965												CY 1966												CY 1967													
		J	F	M	A	M	J	J	A	S	O	N	D	J	F	M	A	M	J	J	A	S	O	N	D	J	F	M	A	M	J	J	A	S	O	N	D	J	F	M	A	M	J	J	A	S	O	N	D	J	F	M	A	M	J	J	A	S	O	N	D		
1	6252- ROADNET & RAILROAD MODIFICATIONS (NOTE 8) →																																																														
2	ROADNET (NOTE 8)																																																														
3	RAILROAD																																																														
4	LOX RAILROAD																																																														
5																																																															
6																																																															
7																																																															
8																																																															
9																																																															
10																																																															
11																																																															
12																																																															
13																																																															
14																																																															
15																																																															
16																																																															
17																																																															
18																																																															
19																																																															
20																																																															
NOTES ALL NOTES WILL BE SHOWN ON PAGE 8.																																																															

**MANNED SPACE FLIGHT SCHEDULE
MSFC-HUNTSVILLE
UTILITY INSTALLATIONS**



ORIGINAL SCHED. APPROVAL 3/31/63
(Date)
LAST SCHED. CHANGE 9/30/65(7)
(Date) (No.) (Initials)
STATUS AS OF 9/30/65
(Date) (Initials)


CONTRACTOR NOT APPLICABLE PROJECT: 6252
SCH'D NO B-6252-3062b-1/7

SCHEDULE RESPONSIBILITY Mr. G. Dykes
STATUS RESPONSIBILITY J. Martin
Mr. J. Martin

FORM 1-63 (Rev. 1-65) (4150-108-01)

SCHEDULE RESPONSIBILITY <u>Mr. C. Dykes</u> STATUS RESPONSIBILITY <u>J. Martin</u> Mr. J. Martin		MANNED SPACE FLIGHT SCHEDULE MSFC-HUNTSVILLE EXTENTION TO UTILITY SYSTEM												ORIGINAL SCHED. APPROVAL <u>3/31/63</u> (Date) LAST SCHED. CHANGE <u>5/31/65(6)</u> (Date) (No.) (Initials) STATUS AS OF <u>9/30/65</u> (Date) (Initials) <u>JJM</u>																																															
		CONTRACTOR NOT APPLICABLE PROJECT: 6252 SCH'D NO B-6252-3362-1/6																																																											
MILESTONES		CY 1964			CY 1965			CY 1966			CY 1967			CY 1968																																															
		J	F	M	A	M	J	J	A	S	O	N	D	J	F	M	A	M	J	J	A	S	O	N	D	J	F	M	A	M	J	J	A	S	O	N	D	J	F	M	A	M	J	J	A	S	O	N	D	J	F	M	A	M	J	J	A	S	O	N	D
1	6252- EXTENSION TO UTILITY SYSTEM →													E-4																																															
2	<u>ACCESS ROAD (WITH STATE ROAD DEPT (PH I & II) (FY 65)</u>													E-7																																															
3	<u>MSFC ROADNET MODIFICATION (FY-64&65)</u>													E-7																																															
4	<u>UTILITY EXTENSION & CABLE PROCUREMENT (FY 65)</u>													E-7																																															
5																																																													
6																																																													
7																																																													
8																																																													
9																																																													
10																																																													
11																																																													
12																																																													
13																																																													
14																																																													
15																																																													
16																																																													
17																																																													
18																																																													
19																																																													
20																																																													
NOTES																																																													

SCHEDULE RESPONSIBILITY <u>Mr. G. Dykes</u> STATUS RESPONSIBILITY <i>(Signature)</i> Mr. C. Coker	MANNED SPACE FLIGHT SCHEDULE MSFC-HUNTSVILLE SATURN SUPPORT TEST AREA					B LEVEL	ORIGINAL SCHED. APPROVAL <u>3/31/63</u> (Date) LAST SCHED. CHANGE _____ (Date) (No.) (Initials) STATUS AS OF <u>9/30/65</u> (Date) (Initials)	CONTRACTOR NOT APPLICABLE PROJECT: 6255 SCH'D NO B-6255-3062-1/2																																																				
MILESTONES	CY 1963			CY 1964			CY 1965			CY 1966			CY 1967																																															
	J	F	M	A	M	J	J	A	S	O	N	D	J	F	M	A	M	J	J	A	S	O	N	D	J	F	M	A	M	J	J	A	S	O	N	D	J	F	M	A	M	J	J	A	S	O	N	D	J	F	M	A	M	J	J	A	S	O	N	D
1	6255- SATURN SUPPORT TEST AREA (FY-65)																																																											
2	GAS PROPELLANT SYSTEM																																																											
3	CRITERIA																																																											
4	DESIGN																																																											
5	ADVERTISE & AWARD																																																											
6	CONSTRUCTION																																																											
7	ACTIVATION																																																											
8	TRANSPORTATION HANGAR																																																											
9	CRITERIA																																																											
10	DESIGN																																																											
11	ADVERTISE & AWARD																																																											
12	CONSTRUCTION																																																											
13	ADDITION TO COMPONENT SUPPORT BUILDING																																																											
14	CRITERIA																																																											
15	DESIGN																																																											
16	ADVERTISE & AWARD																																																											
17	CONSTRUCTION																																																											
18	ACTIVATION																																																											
19																																																												
20																																																												
NOTES																																																												

SCHEDULE RESPONSIBILITY <u>Mr. G. Dykes</u>		STATUS RESPONSIBILITY <u>C. Coker</u> Mr. C. Coker		MANNED SPACE FLIGHT SCHEDULE MSFC-HUNTSVILLE SATURN SUPPORT TEST AREA				ORIGINAL SCHED. APPROVAL <u>3/31/63</u> (Date)																													
								LAST SCHED. CHANGE (Date) (No.) (Initials)																													
		CONTRACTOR NOT APPLICABLE		PROJECT: 6255		STATUS AS OF <u>9/30/65</u> (Date) (Initials)																															
MILESTONES		CY 1963				CY 1964				CY 1965				CY 1966				CY 1967																			
		J	F	M	A	M	J	J	A	S	O	N	D	J	F	M	A	M	J	J	A	S	O	N	D	J	F	M	A	M	J	J	A	S	O	N	D
1	REPLACE DEFLECTOR PIT																																				
2	CRITERIA																																				
3	DESIGN																																				
4	ADVERTISE & AWARD																																				
5	CONSTRUCTION																																				
6	ACTIVATION																																				
7	ACOUSTIC CONTROL & COMM CENTER (NOTE 11)																																				
8	CRITERIA																																				
9	DESIGN																																				
10	ADVERTISE & AWARD																																				
11	CONSTRUCTION																																				
12	ACTIVATION (NOTE 11)																																				
13																																					
14																																					
15																																					
16																																					
17																																					
18																																					
19																																					
20																																					

NOTES ALL NOTES WILL BE SHOWN ON PAGE 8.

SCHEDULE RESPONSIBILITY <u>Mr. G. Dykes</u> STATUS RESPONSIBILITY <u><i>I.H. Lawson Jr</i></u> Mr. I.H. Lawson, Jr.	MANNED SPACE FLIGHT SCHEDULE MSFC-HUNTSVILLE EXTENSION TO PROPULSION AND VEHICLE ENGINEERING LABORATORY PROJECT: 6256 SCH'D NO B-6256-3062-1/2	(B) LEVEL	ORIGINAL SCHED. APPROVAL <u>3/31/63</u> <small>(Date)</small> LAST SCHED. CHANGE <u>7/31/64 (I)</u> <small>(Date) (No.) (Initials)</small> STATUS AS OF <u>9/30/65</u> <small>(Date) (Initials)</small>
MILESTONES	CONTRACTOR NOT APPLICABLE		
	CY 1963	CY 1964	CY 1965
	J F M A M J J A S O N D	J F M A M J J A S O N D	J F M A M J J A S O N D
1	6256-EXTENSION TO PROPULSION & VEHICLE ENGR LAB (FY-65) →		
2	PROJECT APPROVAL		
3	CRITERIA PREPARATION		
4	RECEIPT OF ADV. DES FUNDS		
5	DESIGN		
6	RECEIPT OF CONST FUNDS		
7	BID AND AWARD		
8	CONSTRUCTION PROGRESS		
9	ACTIVATION		
10			
11			
12			
13			
14			
15			
16			
17			
18			
19			
20			
NOTES			

SCHEDULE RESPONSIBILITY <u>Mr. G. Dykes</u> STATUS RESPONSIBILITY <u>J. Martin</u> Mr. J. Martin	MANNED SPACE FLIGHT SCHEDULE MSFC-HUNTSVILLE ADDITIONS TO MATERIALS LABORATORY PROJECT: 6258 SCHD NO B-6258-3362-1	(B) LEVEL	ORIGINAL SCHED. APPROVAL <u>9/30/64</u> (Date) LAST SCHED. CHANGE _____ (Date) (No.) (Initials) STATUS AS OF <u>9/30/65</u> (Date) (Initials)		
MILESTONES	CY 1964	CY 1965	CY 1966	CY 1967	CY 1968
	J F M A M J J A S O N D	J F M A M J J A S O N D	J F M A M J J A S O N D	J F M A M J J A S O N D	J F M A M J J A S O N D
1	6258-ADDITIONS TO MATERIALS LABORATORY (FY-66) →				
2	RECEIVE STUDY FUNDS				
3	CRITERIA STUDY				
4	REC DESIGN FUNDS (PARTIAL)				
5	DESIGN				
6	CONSTRUCTION FUNDS RECEIVED				
7	ADVERTISE & AWARD CONTRACT				
8	CONSTRUCTION PROGRESS				
9	ACTIVATION				
10					
11					
12					
13					
14					
15					
16					
17					
18					
19					
20					
NOTES					

SCHEDULE RESPONSIBILITY <u>Mr. G. Dykes</u> STATUS RESPONSIBILITY <u>Mr. J. Martin</u>		MANNED SPACE FLIGHT SCHEDULE MSFC-HUNTSVILLE NON-DESTRUCTIVE TESTING LABORATORY PROJECT: 6259 SCH'D NO B-6259-3362-1/1		ORIGINAL SCHED. APPROVAL <u>9/30/64</u> <small>(Date)</small> LAST SCHED. CHANGE <u>12/31/64(1)</u> <small>(Date) (No.) (Initials)</small> STATUS AS OF <u>9/30/65</u> <small>(Date) (Initials)</small>																	
MILESTONES		CONTRACTOR NOT APPLICABLE																			
		CY 1964				CY 1965				CY 1966				CY 1967				CY 1968			
		<small>J F M A M J J A S O N D J F M A M J J A S O N D J F M A M J J A S O N D J F M A M J J A S O N D J F M A M J J A S O N D</small>																			
1	6259- NON-DESTRUCTIVE TESTING LABORATORY (FY-66)																				
2	RECEIVE STUDY FUNDS																				
3	CRITERIA STUDY																				
4	RECEIVE DESIGN FUNDS																				
5	DESIGN																				
6	CONSTRUCTION FUNDS RECEIVED																				
7	ADVERTISE & AWARD																				
8	EQUIPMENT PROCUREMENT **																				
9	CONSTRUCTION PROGRESS																				
10	ACTIVATION																				
11																					
12																					
13																					
14																					
15																					
16																					
17																					
18																					
19																					
20																					
NOTES																					

SCHEDULE RESPONSIBILITY <u>Mr. G. Dykes</u> STATUS RESPONSIBILITY <u>J. Martin</u> Mr. J. Martin	MANNED SPACE FLIGHT SCHEDULE MSFC-HUNTSVILLE ADDITION TO COMMUNICATIONS BUILDING PROJECT: 6263 SCH'D NOB-6263-3062-1/2 CONTRACTOR NOT APPLICABLE	(B) LEVEL	ORIGINAL SCHED. APPROVAL <u>9/30/64</u> (Date) LAST SCHED. CHANGE <u>11/30/64(2)</u> (Date) (No.) (Initials) STATUS AS OF <u>9/30/65</u> (Date) (Initials)																																													
MILESTONES	CY 1964			CY 1965			CY 1966			CY 1967			CY 1968																																			
	J	F	M	A	M	J	J	A	S	O	N	D	J	F	M	A	M	J	J	A	S	O	N	D	J	F	M	A	M	J	J	A	S	O	N	D	J	F	M	A	M	J	J	A	S	O	N	D
1	6263- ADDITION TO COMMUNICATIONS BUILDING (FY-64) →												E																																			
2																																																
3																																																
4																																																
5																																																
6																																																
7																																																
8																																																
9																																																
10																																																
11																																																
12																																																
13																																																
14																																																
15																																																
16																																																
17																																																
18																																																
19																																																
20																																																
NOTES																																																

2481 Form 1975-5 (October 1963)