

**MANNED SPACE FLIGHT SCHEDULES**

# **Volume VII**

# **CONSTRUCTION OF FACILITIES**

**MSFC-Book 4-MTF**

VIII.5



## **OMSF PROGRAM STATUS REVIEW OCTOBER 1965**

THIS DOCUMENT CONTAINS SENSITIVE PROGRAM INFORMATION. THE PERSON TO WHOM IT IS ASSIGNED IS RESPONSIBLE FOR LIMITING ACCESS TO THIS DOCUMENT TO NASA PERSONNEL WHO REQUIRE SUCH INFORMATION IN THE DISCHARGE OF THEIR OFFICIAL DUTIES. THIS MATERIAL IS NOT TO BE REPRODUCED OR MADE AVAILABLE TO CONTRACTORS.

Document No. \_\_\_\_\_ Name \_\_\_\_\_



|                               |   |   |  |
|-------------------------------|---|---|--|
| SCHEDULE RESPONSIBILITY _____ | <b>MANNED SPACE FLIGHT SCHEDULE</b>       |  | ORIGINAL SCHED. APPROVAL _____ (Date)            |
| STATUS RESPONSIBILITY _____   | <b>MSFC-MISSISSIPPI<br/>EXCEPTION TWX</b> |   | LAST SCHED. CHANGE _____ (Date) (No.) (Initials) |
|                               | CONTRACTOR                                | PROJECT:<br>SCH'D NO  | STATUS AS OF _____ (Date) (Initials)             |

SEPTEMBER EXCEPTION TWX

EXCEPTION: PAGE 15, LINE 8 - REQUEST THAT NEW MILESTONE BE ADDED UNDER TEST STAND TO PROVIDE FOR COMPLETION OF THE INSTALLATION AND CHECKOUT OF GSE.

EXPLANATION: MILESTONE ADDED AS REQUESTED.

EXCEPTION: PAGE 5, LINE 12 - REASON GIVEN IN NOTE 7 FOR SLIPPAGE OF COMPLETION DATE TO MARCH 1966 IS INCORRECT, SINCE THE MAIN ACCESS ROAD TO SECURITY FACILITIES AS WELL AS GUARD HOUSES (ROAD 'A' - HIGHWAY 43) HAS BEEN COMPLETED. SHORT ACCESS FROM ROAD A TO GUARD HOUSES CAN BE COMPLETED IN CONSIDERABLY LESS TIME THAN THE TWO MONTH PERIOD PROVIDED IN THE PROPOSED SLIP. REQUEST MORE ADEQUATE EXPLANATION.

EXPLANATION: ROAD WORK REFERRED TO IN NOTE 7 IS THE SECOND PHASE OF THE CONSTRUCTION OF ROAD 'A' WHICH CONSISTS OF AN ADDITIONAL TWO LANE ROAD TO THE WEST OF THE PRESENT CONSTRUCTION RESULTING IN A FOUR LANE DIVIDED HIGHWAY THROUGH THE FEE AREA. THE GUARD HOUSES REFERRED TO ARE BEING PLACED IN THE MEDIAN AREA BETWEEN THE TWO ROADS. CONSTRUCTION WILL BE DELAYED TO ELIMINATE INTERFERENCE WITH ROAD WORKING EQUIPMENT. GUARD HOUSES SHOULD NOT BE CONFUSED WITH RECEPTION CENTERS WHICH WILL BECOME OPERATIVE ON SCHEDULE.



SCHEDULE RESPONSIBILITY \_\_\_\_\_

STATUS RESPONSIBILITY \_\_\_\_\_

**MANNED SPACE FLIGHT SCHEDULE  
TABLE OF CONTENTS  
VOLUME VII-FACILITIES  
BOOK 4-MSFC-MISSISSIPPI**



ORIGINAL SCHED. APPROVAL \_\_\_\_\_ (Date)

LAST SCHED. CHANGE \_\_\_\_\_ (Date) (No.) (Initials)

STATUS AS OF \_\_\_\_\_ (Date) (Initials)

CONTRACTOR \_\_\_\_\_

PROJECT:  
SCH'D NO \_\_\_\_\_

EDITION A

| Project No. | Title   | Level | Page No.    | Project No. | Title   | Level | Page No.    |
|-------------|---|-------|-------------|-------------|---|-------|-------------|
| 6401        | Ground Test Facilities  | A     | VII-4-1     | 6405        | (i) Lock  | A     | VII-4-2     |
| 6402        | Land Acquisition  | A     | VII-4-1     |             | (j) Data Acquisition Center                                     | B     | VII-4-12    |
| 6403        | o Advanced Saturn S-IC Static Test Facility                                   | A     | VII-4-1     |             | (k) Data Handling Center  | B     | VII-4-13    |
|             | o (a) Test Stand-Dual Position  | A     | VII-4-1     | (6419)      | (l) Office & Administration Building                            | A     | VII-4-2     |
|             | 1. Excavation, Piling & Substructure  | A     | VII-4-1     |             | (m) Docks   | A     | VII-4-2     |
|             | o 2. Test Position B-2  | B     | VII-4-8     |             | (n) Central Heating Plant & Distr Sys                           | A     | VII-4-2     |
|             | 3. Test Position B-1  | B     | VII-4-9     |             | (o) Warehouse   | A     | VII-4-2     |
|             | (b) S-I-C Test Control Center   | B     | VII-4-10    |             | (p) Site Maintenance Building                                   | A     | VII-4-2     |
|             | (c) Connection to Prop Storage & Transf System (S-IC)                         | A     | VII-4-1     | 6406        | (q) Test Area Control Center                                    | B     | VII-4-14*   |
|             | (d) Connection to High Pressure Gas Compressor Fac & Distr Sys (S-IC)         | A     | VII-4-1     |             | (r) Emergency Service Building                                  | A     | VII-4-3     |
|             | o (e) Connection to High Pressure Water Storage Pumping & Distr System (S-IC) | B     | VII-4-20&21 |             | o Advanced Saturn Second Stage S-II Static Test Facility        | A     | VII-4-3     |
|             | (f) S-IC Stage Storage Building   | A     | VII-4-1     |             | o (a) Test Stand A-2  | B     | VII-4-15    |
|             | (g) Adaption Hardware   | A     | VII-4-1     |             | o (b) Test Stand A-1  | B     | VII-4-16    |
| 6405        | Utility Installation & Support Fac  | A     | VII-4-2&3   |             | (c) Test Control Center (A-2 Test Stand)                        | B     | VII-4-17    |
|             | (a) Roads (Phase I)   | B     | VII-4-11    |             | (d) Test Control Center (A-1 Test Stand)                        | B     | VII-4-17    |
|             | (b) Dredge River (Phase I)  | A     | VII-4-2     |             | o (e) Propellant Storage & Transfer System (S-II)               | B     | VII-4-18    |
|             | (c) Railroads (Phase I)   | A     | VII-4-2     |             | o (f) High Pressure Gas Compressor Facility & Distr Sys (S-II)  | B     | VII-4-19    |
|             | (d) Potable Water Supply & Distr Sys  | A     | VII-4-2     |             | o (g) High Pressure Water, Pumping & Distribution System (S-II) | B     | VII-4-20&21 |
|             | (e) Electrical Distr System   | A     | VII-4-2     |             | (h) S-II Stage C/O and Storage Building                         | B     | VII-4-22    |
|             | (f) Natural Gas Distribution Sys  | A     | VII-4-2     |             | (i) Addition to S-II Stage C/O and Storage Facility             | B     | VII-4-23    |
|             | (g) Sanitary Sewer Collection & Treatment System                              | A     | VII-4-2     | 6407        | Advanced Saturn S-II Static Test Facility (Support Facility)    | A     | VII-4-4     |
|             | (h) Main Canal  | A     | VII-4-2     |             | (a) Dredge Harbor   | A     | VII-4-4     |
|             |   |       |             |             | (b) Lock Water Supply   | A     | VII-4-4     |

- o Indicates Changes From Last Submission
- \* Indicates Deletion of a Milestone
- \*\* Indicates Additions of a Milestone



|  |   |   |   |
|--|---|---|---|
| SCHEDULE RESPONSIBILITY _____<br><br>STATUS RESPONSIBILITY _____ | <b>MANNED SPACE FLIGHT SCHEDULE</b><br><b>TABLE OF CONTENTS</b><br><b>VOLUME VII-FACILITIES</b><br><b>BOOK 4-MSFC-MISSISSIPPI</b><br>PROJECT:<br>SCHED NO | <div style="border: 1px solid black; border-radius: 50%; width: 30px; height: 30px; display: flex; align-items: center; justify-content: center; margin: 0 auto;">             LEVEL           </div> | ORIGINAL SCHED. APPROVAL _____ (Date)<br>LAST SCHED. CHANGE _____ (Date) (No.) (Initials)<br>STATUS AS OF _____ (Date) (Initials) |
| CONTRACTOR   |   |   |   |

EDITION A

| Project No.  | Title  | Level | Page No.  | Project No. | Title  | Level | Page No. |
|--------------|--|-------|-----------|-------------|--|-------|----------|
| 6407 (Con't) | (c) Central Cafeteria                                  | A     | VII-4-4   | 6420        | (b) Canals, (Cryogenic Dock Area)                        | A     | VII-4-5  |
|              | (d) Communication & Telephone Building & Lines         | A     | VII-4-4   |             | (c) RP-1 Transfer Dock                                   | A     | VII-4-5  |
|              | (e) Bridge, Canal                                      | A     | VII-4-4   |             | (d) Booster Transfer Dock                                | A     | VII-4-5  |
|              | (f) Perimeter Fence                                    | A     | VII-4-4   | 6421        | Components Service Facility                              | A     | VII-4-5  |
| 6408         | Electronics, Instrumentation, and Materials Laboratory | A     | VII-4-4   | 6425        | o Additions to Utility Installation and Support Facility | A     | VII-4-5  |
| 6419         | Bridge for U.S. Interstate Highway No. 10              | A     | VII-4-4   |             | (a) Security Control Facility                            | B     | VII-4-29 |
|              |  | B     | VII-4-24  |             | (b) Mobile Equipment Operation Building                  | B     | VII-4-29 |
| 6414         | Test Maintenance Shop                                  | A     | VII-4-4   |             | (c) Cryogenic Barge Service Bldg                         | B     | VII-4-29 |
| 6417         | Sonic Measuring Facility                               | A     | VII-4-4   | 6426        | o (d) Warehouse Addition                                 | B     | VII-4-29 |
|              |  | B     | VII-4-25* |             | General Support Facilities                               | A     | VII-4-5  |
| 6418         | o Transportation and Parking Facility                  | A     | VII-4-5   | 64XX        | (a) LH <sub>2</sub> Storage Tank                         | A     | VII-4-5  |
|              | (a) Road and Vehicle Parking (Phase II)                | B     | VII-4-26  |             | (b) Locomotive Shop                                      | A     | VII-4-5  |
|              | (b) Railroads (Phase II)                               | A     | VII-4-5   |             | o LH <sub>2</sub> Plant                                  | A     | VII-4-6  |
|              | o (c) Relocation of State Highway No. 43               | B     | VII-4-27  |             |  | B     | VII-4-30 |
| 6420         | Waterway and Docking Facilities                        | A     | VII-4-5   |             | o Notes  | A     | VII-4-7  |
|              | (a) Dredge River                                       | A     | VII-4-5   |             | MSFC - Mississippi Funding Schedule                      | A     | VII-4-7a |
|              |  |       |           |             | Mississippi Explanations                                 | A     | VII-4-7b |

o Indicates Changes from Last Submission  
 \* Indicates Deletion of a Milestone  
 \*\* Indicates Additions of a Milestone

# SCHEDULE SYMBOLS

## MILESTONE SYMBOLS

|       |   |
|-------|---|
|       | SCHEDULED COMPLETION DATE-CONTROLLED MILESTONE                                    |
|       | SCHEDULED COMPLETION DATE-SUPPORTING MILESTONE                                    |
|       | FIRST SCHEDULE REVISION-CONTROLLED MILESTONE*                                     |
|       | FIRST SCHEDULE REVISION-SUPPORTING MILESTONE*                                     |
|       | ACTUAL COMPLETION DATE-CONTROLLED MILESTONE                                       |
|       | ACTUAL COMPLETION DATE-SUPPORTING MILESTONE                                       |
|       | RESCHEDULING REQUEST-CONTROLLED MILESTONE   |
| E     | EXPECTED COMPLETION DATE  |
| L     | LATEST ALLOWABLE COMPLETION DATE  |
| A     | PROJECT (PROGRAM) MANAGERS' ASSESSMENT OF EXPECTED COMPL DATE                     |
| A E   | EXPECTED AND ASSESSMENT DATES IDENTICAL   |
| A E L | EXPECTED, LATEST ALLOWABLE & ASSESSMENT DATES IDENTICAL                           |
| E     | SCHEDULED AND EXPECTED DATES IDENTICAL  |
| E L   | SCHEDULED, EXPECTED AND LATEST ALLOWABLE DATES IDENTICAL (CONTROLLED MILESTONE)** |
| E L   | SCHEDULED, EXPECTED AND LATEST ALLOWABLE DATES IDENTICAL (SUPPORTING MILESTONE)   |
| E L   | SCHEDULED, EXPECTED AND LATEST ALLOWABLE DATES IDENTICAL (SUPPORTING MILESTONE)** |

## USE OF SCHEDULE SYMBOLS IN CONJUNCTION WITH ACTIVITY BARS

### ACTIVITY INITIATION

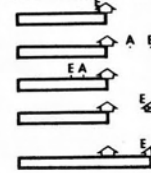
|  |                                  |
|--|----------------------------------|
|  | PREDICTED INITIATION ON SCHEDULE |
|  | PREDICTED LATE INITIATION        |
|  | PREDICTED EARLY INITIATION       |

### ACTIVITY PROGRESS TOWARD COMPLETION - BASIC SCHEDULE

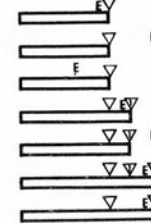
|  |   |
|--|---|
|  | ACTIVITY ON SCHEDULE  |
|  | ACTIVITY BEHIND SCHEDULE  |
|  | ACTIVITY AHEAD OF SCHEDULE  |
|  | PROGRESS AGAINST SCHEDULED DELIVERIES, TEST FIRINGS, ETC. (ON SCHEDULE) |
|  | LATE INITIATION - BEHIND SCHEDULE                                       |
|  | EARLY INITIATION - AHEAD OF SCHEDULE                                    |
|  | BEHIND SCHEDULE - FOUR CUMULATIVE DELIVERIES                            |
|  | AHEAD OF SCHEDULE - SEVEN CUMULATIVE DELIVERIES                         |

\* THE 2 FOR 2ND RESCHEDULING, 3 FOR 3RD RESCHEDULING ETC.  
 \*\* SHOWN IN CONJUNCTION WITH A MILESTONE RESCHEDULED TWICE.

## CONTROLLED MILESTONES



## SUPPORTING MILESTONES



## ACTIVITY OR EVENT COMPLETION

|  |  |
|--|--|
|  | PREDICTED COMPLETION ON SCHEDULE   |
|  | PREDICTED LATE COMPLETION WITH PROJECT MANAGERS' ASSESSMENT                              |
|  | PREDICTED EARLY COMPLETION WITH PROJECT MANAGERS' ASSESSMENT                             |
|  | PREDICTED LATE COMPLETION WITH PROJECT MANAGERS' REQUEST FOR RESCHEDULING                |
|  | RESCHEDULING REQUEST APPROVED, FIRST SCHEDULE REVISION. PREDICTED COMPLETION ON SCHEDULE |

|  |   |
|--|---|
|  | PREDICTED COMPLETION ON SCHEDULE                                  |
|  | PREDICTED LATE COMPLETION (PROJECT MANAGERS' ASSESSMENT OPTIONAL) |
|  | PREDICTED EARLY COMPLETION  |
|  | FIRST SCHEDULE REVISION-PREDICTED COMPLETION ON SCHEDULE          |
|  | FIRST SCHEDULE REVISION-PREDICTED LATE COMPLETION                 |
|  | SECOND SCHEDULE REVISION-FIRST MONTH SUBMISSION                   |
|  | SECOND SCHEDULE REVISION-2ND MONTH SUBMISSION                     |

## RANDOM SITUATIONS

(E AND A SYMBOLS HAVE BEEN OMITTED IN PORTRAYING RANDOM SITUATIONS)

### PREDICTED LATE INITIATION & LATE COMPLETION

|  |   |
|--|---|
|  | CONDITION "A"-PROPOSED  |
|  | CONDITION "A"-ACCEPTED  |
|  | CONDITION "B"-PROPOSED (PREDICTED INITIATION LATER THAN SCHEDULED COMPLETION) |
|  | CONDITION "B"-ACCEPTED  |

### PREDICTED EARLY INITIATION & EARLY COMPLETION

|  |   |
|--|---|
|  | CONDITION "C"-PROPOSED  |
|  | CONDITION "C"-ACCEPTED  |
|  | CONDITION "D"-PROPOSED (PREDICTED COMPLETION EARLIER THAN SCHEDULED INITIATION) |
|  | CONDITION "D"-ACCEPTED  |

### NEW PREDICTED COMPLETION DATE

|  |                   |                      |
|--|-------------------|----------------------|
|  | EXISTING SCHEDULE | GRAPH CURVES         |
|  | PROPOSED          | ----- PLANNED        |
|  | ACCEPTED          | ———— ACTUAL          |
|  |                   | ..... CURVE ESTIMATE |

### USE OF "LATEST ALLOWABLE" DATE SYMBOL

|  |   |
|--|---|
|  | KEY MILESTONE - PREDICTED EARLY COMPLETION                    |
|  | SUPPORTING MILESTONE - PREDICTED LATE COMPLETION              |
|  | CONSTRAINT - CONTROLLED MILESTONE - PREDICTED LATE COMPLETION |

















|  |  |   |
|--|--|---|
| SCHEDULE RESPONSIBILITY _____<br>STATUS RESPONSIBILITY _____ | <b>MANNED SPACE FLIGHT SCHEDULE</b><br><b>MSFC-MISSISSIPPI</b><br><b>NOTES</b><br>PROJECT: _____<br>SCH'D NO _____<br>CONTRACTOR _____ | ORIGINAL SCHED. APPROVAL _____ (Date)<br>LAST SCHED. CHANGE _____ (Date) (No.) (Initials)<br>STATUS AS OF _____ (Date) (Initials) |
|--|--|---|

NOTES FOR OCTOBER SUBMISSION

1. ASSESSMENT INDICATES OVERALL PROJECT IS 5 WEEKS BEHIND SCHEDULE. COMPREHENSIVE AND COORDINATED EVALUATIONS ARE BEING MADE TO DETERMINE NECESSARY ACTION TO REGAIN PRESENT SCHEDULES.
2. CONTRACTORS TAKING LONGER THAN ANTICIPATED. NO PROGRAM IMPACT.
3. REPLACEMENT OF MINOR CRANE WILL EXTEND COMPLETION TO 1 NOVEMBER 1965. DAMAGED VACUUM JACKETED HYDROGEN FILL LINE SCHEDULED OPERATIONAL SAME DATE. NO PROGRAM IMPACT.
4. CONCRETE POURING IS NOT KEEPING PACE WITH SCHEDULES. CORPS OF ENGINEERS IS EVALUATING CONTRACTOR'S CLAIMS FOR TIME EXTENSIONS.
5. COMPLETION OF LH<sub>2</sub> AREA SCHEDULED FOR 13 OCTOBER 1965. NO PROGRAM IMPACT.
6. MINOR DEFICIENCIES IN EQUIPMENT FOR HELIUM, HYDROGEN AND AIR SYSTEMS ARE DELAYING COMPLETION.
7. THIS PROJECT PROVIDES 2.365 MILLION ASSISTANCE TO THE MISSISSIPPI STATE HIGHWAY DEPARTMENT TO CONSTRUCT A NEW HIGHWAY 43 SKIRTING THE TEST SITE FROM PICAYUNE TO BAY ST. LOUIS. THE CONTRACT IS SCHEDULED FOR COMPLETION 15 MAY 1966. NOTE: THE CONTRACTOR IS UNDER THE DIRECTION OF THE MISSISSIPPI STATE HIGHWAY DEPARTMENT AND SCHEDULES ARE NOT CONTROLLED BY NASA.
8. BOD FOR WAREHOUSE IS 1 APRIL 1966. CONTRACT COMPLETION DATE FOR BALANCE OF WORK INCLUDING SALVAGE YARD AND SITEWORK IS 2 JULY 1966.
9. DELETED FROM 1966 BUDGET.
10. EXTENSIVE IN-PLANT DAMAGE TO PIPING INSULATION, POWER SUPPLY & CONTROLS BY HURRICANE BETSY REQUIRE REWORKING AND REPAIR. AND WILL DELAY ACTIVATION OF THIS FACILITY UNTIL 15 DECEMBER 1965. TRAILER AND TANK CAR DELIVERY FROM EXISTING WEST COAST SUPPLY SOURCE WILL FILL STORAGE TANK ON DOCK AND FURNISH PRODUCT FOR ALL TESTING NEEDS AS SCHEDULED.
11. REPLACEMENT AND RETESTING HAVE TAKEN LONGER THAN EXPECTED. NO PROGRAM IMPACT.
12. COMPLETION OF GSE AT A LATER DATE THAN FACILITY ACTIVATION IS NOT CONSIDERED TO BE AN INCORRECT INDICATION AS FACILITY WILL BE OPERATING IN MANUAL MODE DURING INITIAL PHASES.
13. EVALUATION OF TEST STAND ACTIVATION CONTINUES. ASSESSED DATES ARE THOSE INCLUDED IN MOST RECENT PROPOSAL TRANSMITTED TO HEADQUARTERS.
14. LATE COMPLETION OF FIRST POSITION WILL IMPACT START AND COMPLETION OF THIS POSITION.
15. SCHEDULES FOR TESTING IN POSITION A-1 ARE UNDER EVALUATION. ASSESSMENT INDICATES THAT THE FACILITY WILL NOT BE AVAILABLE TO RECEIVE TEST HARDWARE PRIOR TO 1 NOVEMBER 1966.



SCHEDULE RESPONSIBILITY Dr. Wernher von Braun

STATUS RESPONSIBILITY J. R. Lada  
J. R. Lada

MANNED SPACE FLIGHT SCHEDULE  
MSFC-MISSISSIPPI TEST FACILITY  
CONSTRUCTION OF FACILITIES  
FUNDING SCHEDULE

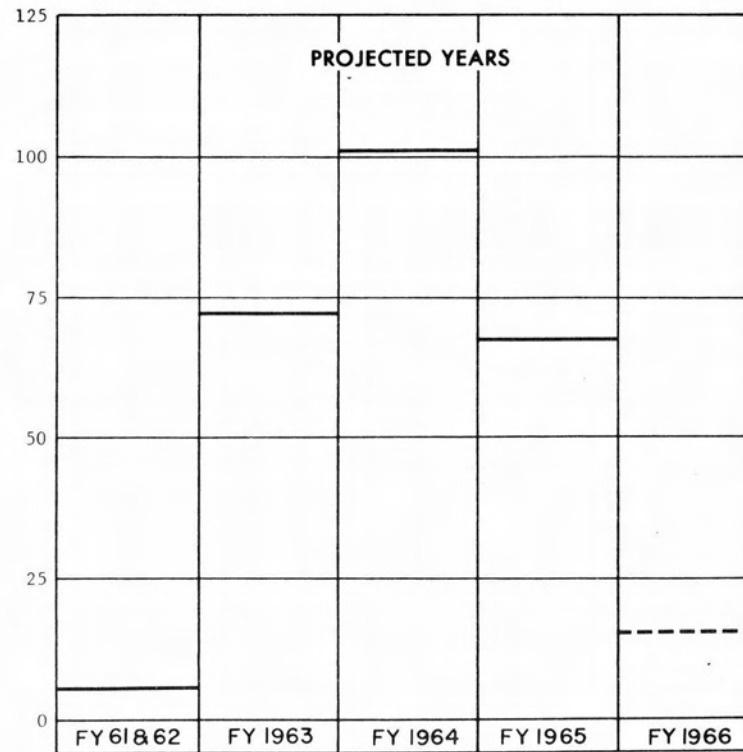
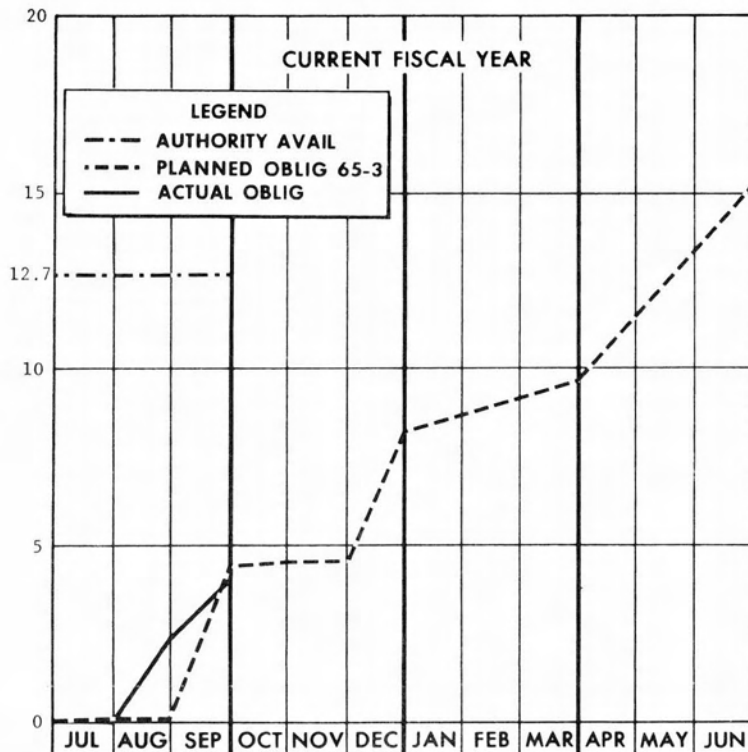


CONTRACTOR

PROJECT:  
SCH'D NO: A-6400-3/24

ORIGINAL SCHED. APPROVAL \_\_\_\_\_ (Date)  
LAST SCHED. CHANGE 9/30/65 (24) (Date) (No.) (Initials)  
STATUS AS OF 9/30/65 (Date) (Initials)

OBLIGATIONS (IN MILLIONS)



|           |   |       |       |       |   |       |  |       |       |  |        |
|-----------|---|-------|-------|-------|---|-------|--|-------|-------|--|--------|
| PLANNED   | 0 | .004  | 4.406 | 4.512 | 0 | 8.160 |  |       | 9.656 |  | 15.174 |
| ACT./EST. | 0 | 2.336 | 4.137 |       |   |       |  |       |       |  |        |
| PLANNED   | 0 | .004  | 4.402 | .106  | 0 | 3.648 |  | 1.496 |       |  | 5.518  |
| ACT./EST. | 0 | 2.336 | 1.801 |       |   |       |  |       |       |  |        |

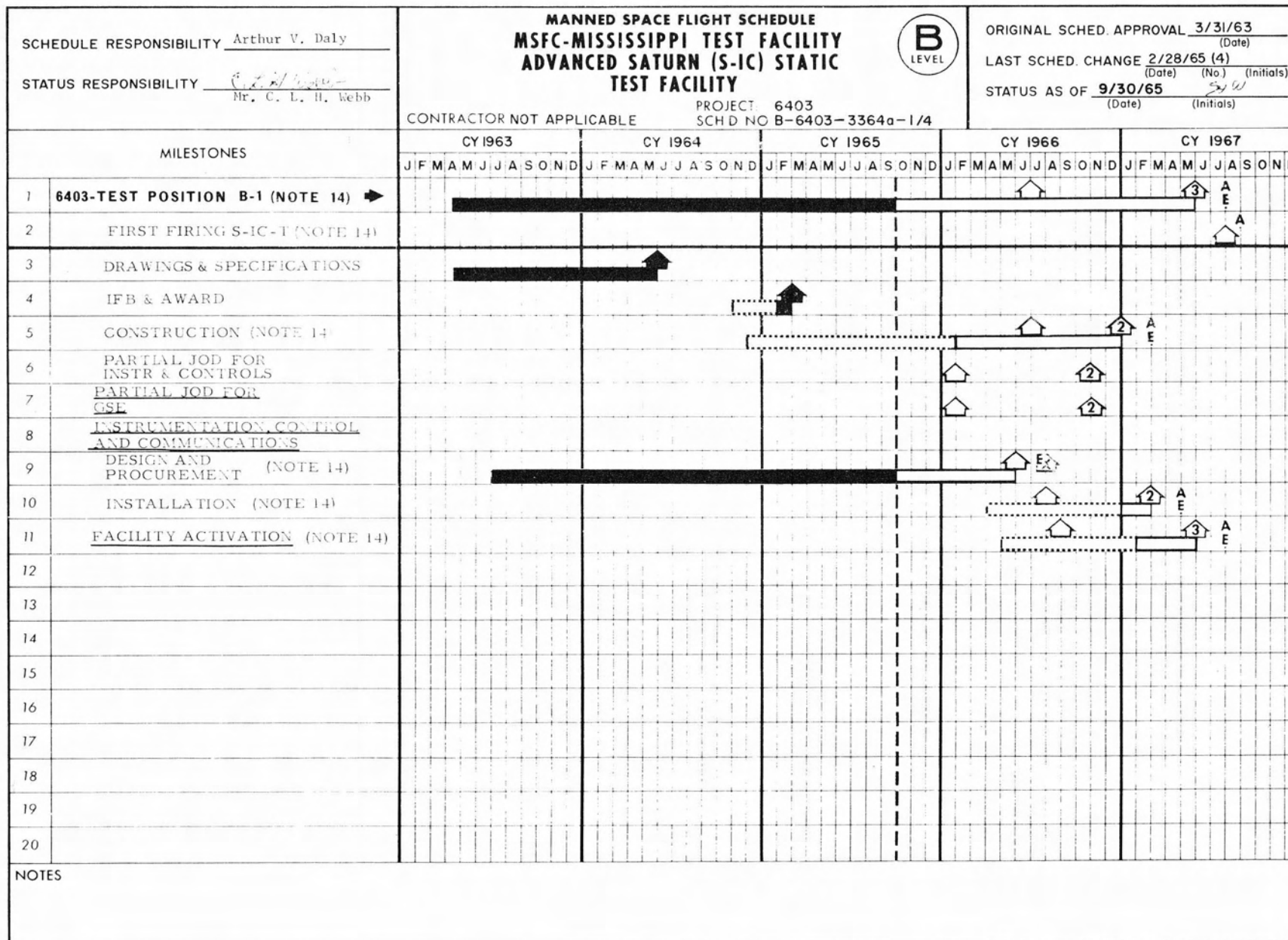
|           |           |            |             |             |             |
|-----------|-----------|------------|-------------|-------------|-------------|
| PLANNED   |           |            |             |             | 15,174,000  |
| ACT./EST. | 5,043,000 | 72,013,000 | 101,929,000 | 67,077,000  |             |
| PLANNED   |           |            |             |             | 261,236,000 |
| ACT./EST. | 5,043,000 | 77,056,000 | 178,985,000 | 246,062,000 |             |

NOTES

|  |   |   |
|--|---|---|
| SCHEDULE RESPONSIBILITY _____<br>STATUS RESPONSIBILITY _____ | <b>MANNED SPACE FLIGHT SCHEDULE</b><br><b>MSFC-MISSISSIPPI</b><br><b>EXPLANATIONS</b><br>PROJECT: _____<br>SCH'D NO _____ | <div style="text-align: center; border: 1px solid black; border-radius: 50%; width: 40px; height: 40px; margin: 0 auto; display: flex; align-items: center; justify-content: center;">             LEVEL           </div> ORIGINAL SCHED. APPROVAL _____ (Date)<br>LAST SCHED. CHANGE _____ (Date) (No.) (Initials)<br>STATUS AS OF _____ (Date) (Initials) |
| CONTRACTOR   |   |   |

|      | <u>PROJECT</u>  | <u>AMOUNT OF VARIANCE</u><br>(In Millions) | <u>REMARKS</u>   |
|------|---|--|--|
| 6422 | Saturn V, 1st Stage (S-1C)<br>Static Test Fac. (FY-65)  | .165                                       | Negotiations for Phase II Tech. System not completed as scheduled. |
| 6411 | Control Center & Data Acq.<br>and Handling Fac. (FY-64) | .098                                       | Phase I Tech. System contract modification awarded below estimate. |





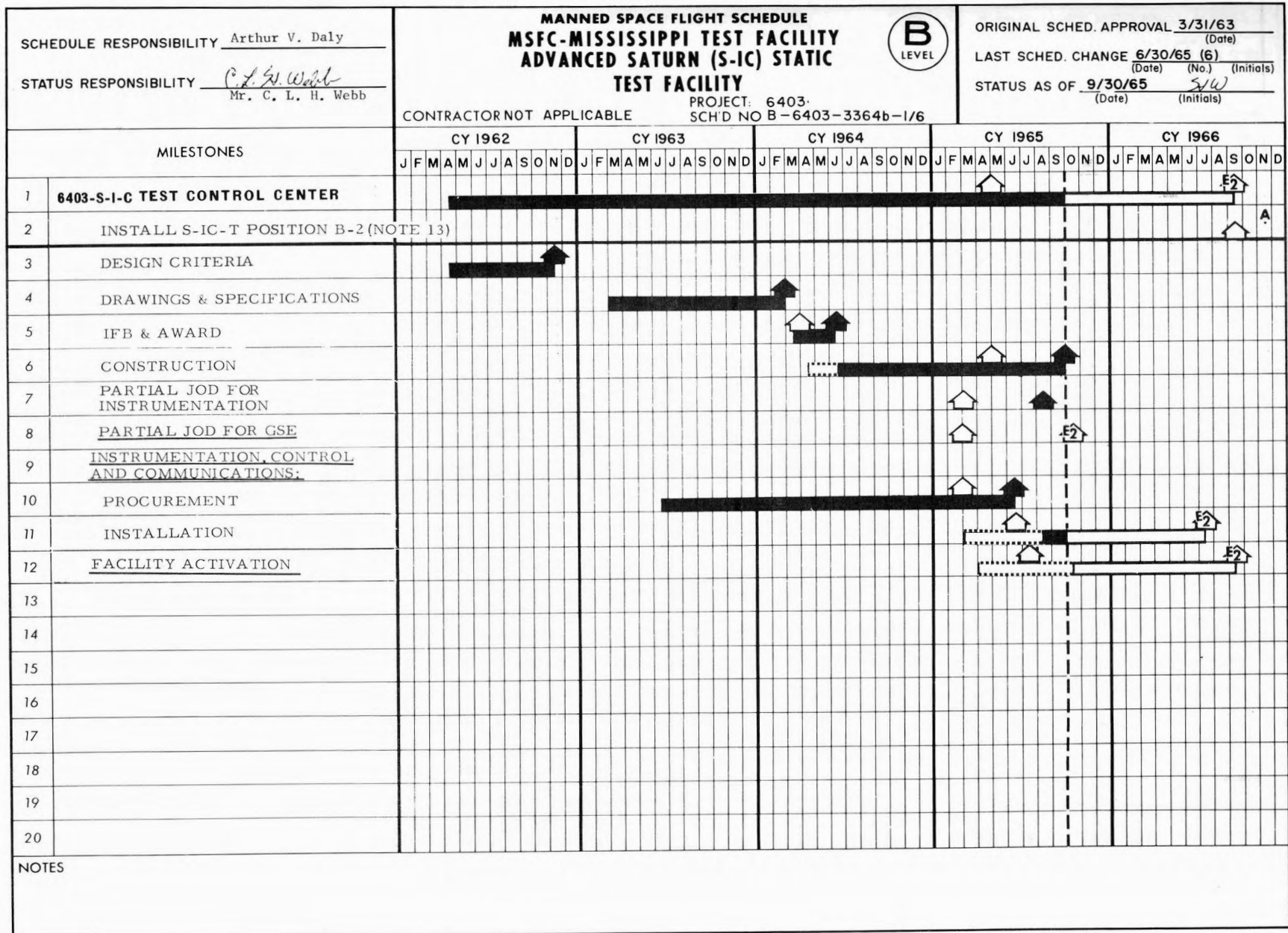
**MANNED SPACE FLIGHT SCHEDULE  
MSFC-MISSISSIPPI TEST FACILITY  
ADVANCED SATURN (S-IC) STATIC  
TEST FACILITY**



ORIGINAL SCHED. APPROVAL 3/31/63  
(Date)  
LAST SCHED. CHANGE 2/28/65 (4)  
(Date) (No.) (Initials)  
STATUS AS OF 9/30/65  
(Date) (Initials)

CONTRACTOR NOT APPLICABLE PROJECT 6403  
SCHED NO B-6403-3364a-1/4





MSEE - Form 1475-N (Rev. 9-1963)

|   |  |  |   |                                      |                                      |
|---|--|--|---|--------------------------------------|--------------------------------------|
| SCHEDULE RESPONSIBILITY <u>Arthur V. Daly</u><br>STATUS RESPONSIBILITY <u>C. L. Webb</u><br>Mr. C. L. H. Webb | <b>MANNED SPACE FLIGHT SCHEDULE</b><br><b>MSFC-MISSISSIPPI TEST FACILITY</b><br><b>UTILITY INSTALLATION &amp; SUPPORT</b><br><b>FACILITIES</b> | ORIGINAL SCHED. APPROVAL <u>3/31/63</u><br>(Date)<br>LAST SCHED. CHANGE <u>6/30/65(6)</u><br>(Date) (No.) (Initials)<br>STATUS AS OF <u>9/30/65</u><br>(Date) (Initials) | PROJECT: 6405<br>SCHD NO B-6405-3364g-1/6 |                                      |                                      |
| CONTRACTOR NOT APPLICABLE   |  |  |   |                                      |                                      |
| MILESTONES  | CY 1962<br>J F M A M J J J A S O N D   | CY 1963<br>J F M A M J J J A S O N D   | CY 1964<br>J F M A M J J J A S O N D      | CY 1965<br>J F M A M J J J A S O N D | CY 1966<br>J F M A M J J J A S O N D |
| 1 6405-ROADS (PHASE I) →  |  |  |   |                                      |                                      |
| 2 DESIGN CRITERIA   |  |  |   |                                      |                                      |
| 3 OFFICE & ADMIN BLDG ACCESS<br>ROADS "C" AND "K"   |  |  |   |                                      |                                      |
| 4   |  |  |   |                                      |                                      |
| 5   |  |  |   |                                      |                                      |
| 6   |  |  |   |                                      |                                      |
| 7   |  |  |   |                                      |                                      |
| 8   |  |  |   |                                      |                                      |
| 9   |  |  |   |                                      |                                      |
| 10  |  |  |   |                                      |                                      |
| 11  |  |  |   |                                      |                                      |
| 12  |  |  |   |                                      |                                      |
| 13  |  |  |   |                                      |                                      |
| 14  |  |  |   |                                      |                                      |
| 15  |  |  |   |                                      |                                      |
| 16  |  |  |   |                                      |                                      |
| 17  |  |  |   |                                      |                                      |
| 18  |  |  |   |                                      |                                      |
| 19  |  |  |   |                                      |                                      |
| 20  |  |  |   |                                      |                                      |
| NOTES   |  |  |   |                                      |                                      |



| MILESTONES |                                      | CY 1962  |   |   |   |   | CY 1963 |   |   |   |   | CY 1964 |   |   |   |   | CY 1965 |   |   |   |   | CY 1966 |   |   |   |   |   |   |   |   |   |   |   |   |   |   |   |   |   |   |   |   |   |   |   |   |   |   |   |   |   |   |   |   |   |   |   |   |   |
|------------|--------------------------------------|--|---|---|---|---|---------|---|---|---|---|---------|---|---|---|---|---------|---|---|---|---|---------|---|---|---|---|---|---|---|---|---|---|---|---|---|---|---|---|---|---|---|---|---|---|---|---|---|---|---|---|---|---|---|---|---|---|---|---|---|
|            |                                      | J  | F | M | A | M | J       | J | A | S | O | N       | D | J | F | M | A       | M | J | J | A | S       | O | N | D | J | F | M | A | M | J | J | A | S | O | N | D | J | F | M | A | M | J | J | A | S | O | N | D | J | F | M | A | M | J | J | A | S | O |
| 1          | 6405-DATA HANDLING CENTER →          | [Gantt bar spanning from late 1962 to early 1965]  |   |   |   |   |         |   |   |   |   |         |   |   |   |   |         |   |   |   |   |         |   |   |   |   |   |   |   |   |   |   |   |   |   |   |   |   |   |   |   |   |   |   |   |   |   |   |   |   |   |   |   |   |   |   |   |   |   |
| 2          | FIRST FIRING S-II-T                  | [Gantt bar spanning from late 1964 to early 1965]  |   |   |   |   |         |   |   |   |   |         |   |   |   |   |         |   |   |   |   |         |   |   |   |   |   |   |   |   |   |   |   |   |   |   |   |   |   |   |   |   |   |   |   |   |   |   |   |   |   |   |   |   |   |   |   |   |   |
| 3          | DESIGN CRITERIA                      | [Gantt bar spanning from early 1963 to early 1964] |   |   |   |   |         |   |   |   |   |         |   |   |   |   |         |   |   |   |   |         |   |   |   |   |   |   |   |   |   |   |   |   |   |   |   |   |   |   |   |   |   |   |   |   |   |   |   |   |   |   |   |   |   |   |   |   |   |
| 4          | DRAWINGS & SPECIFICATIONS            | [Gantt bar spanning from early 1963 to early 1964] |   |   |   |   |         |   |   |   |   |         |   |   |   |   |         |   |   |   |   |         |   |   |   |   |   |   |   |   |   |   |   |   |   |   |   |   |   |   |   |   |   |   |   |   |   |   |   |   |   |   |   |   |   |   |   |   |   |
| 5          | IFB & AWARD                          | [Gantt bar spanning from early 1964 to early 1965] |   |   |   |   |         |   |   |   |   |         |   |   |   |   |         |   |   |   |   |         |   |   |   |   |   |   |   |   |   |   |   |   |   |   |   |   |   |   |   |   |   |   |   |   |   |   |   |   |   |   |   |   |   |   |   |   |   |
| 6          | CONSTRUCTION                         | [Gantt bar spanning from early 1964 to early 1965] |   |   |   |   |         |   |   |   |   |         |   |   |   |   |         |   |   |   |   |         |   |   |   |   |   |   |   |   |   |   |   |   |   |   |   |   |   |   |   |   |   |   |   |   |   |   |   |   |   |   |   |   |   |   |   |   |   |
| 7          | PARTIAL BOD FOR INSTR & CONTROLS     | [Gantt bar spanning from early 1964 to early 1965] |   |   |   |   |         |   |   |   |   |         |   |   |   |   |         |   |   |   |   |         |   |   |   |   |   |   |   |   |   |   |   |   |   |   |   |   |   |   |   |   |   |   |   |   |   |   |   |   |   |   |   |   |   |   |   |   |   |
| 8          | <u>EQUIPMENT AND INSTRUMENTATION</u> | [Gantt bar spanning from early 1964 to early 1965] |   |   |   |   |         |   |   |   |   |         |   |   |   |   |         |   |   |   |   |         |   |   |   |   |   |   |   |   |   |   |   |   |   |   |   |   |   |   |   |   |   |   |   |   |   |   |   |   |   |   |   |   |   |   |   |   |   |
| 9          | PROCUREMENT                          | [Gantt bar spanning from early 1963 to early 1964] |   |   |   |   |         |   |   |   |   |         |   |   |   |   |         |   |   |   |   |         |   |   |   |   |   |   |   |   |   |   |   |   |   |   |   |   |   |   |   |   |   |   |   |   |   |   |   |   |   |   |   |   |   |   |   |   |   |
| 10         | INSTALLATION                         | [Gantt bar spanning from early 1965 to early 1966] |   |   |   |   |         |   |   |   |   |         |   |   |   |   |         |   |   |   |   |         |   |   |   |   |   |   |   |   |   |   |   |   |   |   |   |   |   |   |   |   |   |   |   |   |   |   |   |   |   |   |   |   |   |   |   |   |   |
| 11         | <u>FACILITY ACTIVATION</u>           | [Gantt bar spanning from early 1965 to early 1966] |   |   |   |   |         |   |   |   |   |         |   |   |   |   |         |   |   |   |   |         |   |   |   |   |   |   |   |   |   |   |   |   |   |   |   |   |   |   |   |   |   |   |   |   |   |   |   |   |   |   |   |   |   |   |   |   |   |
| 12         |                                      |  |   |   |   |   |         |   |   |   |   |         |   |   |   |   |         |   |   |   |   |         |   |   |   |   |   |   |   |   |   |   |   |   |   |   |   |   |   |   |   |   |   |   |   |   |   |   |   |   |   |   |   |   |   |   |   |   |   |
| 13         |                                      |  |   |   |   |   |         |   |   |   |   |         |   |   |   |   |         |   |   |   |   |         |   |   |   |   |   |   |   |   |   |   |   |   |   |   |   |   |   |   |   |   |   |   |   |   |   |   |   |   |   |   |   |   |   |   |   |   |   |
| 14         |                                      |  |   |   |   |   |         |   |   |   |   |         |   |   |   |   |         |   |   |   |   |         |   |   |   |   |   |   |   |   |   |   |   |   |   |   |   |   |   |   |   |   |   |   |   |   |   |   |   |   |   |   |   |   |   |   |   |   |   |
| 15         |                                      |  |   |   |   |   |         |   |   |   |   |         |   |   |   |   |         |   |   |   |   |         |   |   |   |   |   |   |   |   |   |   |   |   |   |   |   |   |   |   |   |   |   |   |   |   |   |   |   |   |   |   |   |   |   |   |   |   |   |
| 16         |                                      |  |   |   |   |   |         |   |   |   |   |         |   |   |   |   |         |   |   |   |   |         |   |   |   |   |   |   |   |   |   |   |   |   |   |   |   |   |   |   |   |   |   |   |   |   |   |   |   |   |   |   |   |   |   |   |   |   |   |
| 17         |                                      |  |   |   |   |   |         |   |   |   |   |         |   |   |   |   |         |   |   |   |   |         |   |   |   |   |   |   |   |   |   |   |   |   |   |   |   |   |   |   |   |   |   |   |   |   |   |   |   |   |   |   |   |   |   |   |   |   |   |
| 18         |                                      |  |   |   |   |   |         |   |   |   |   |         |   |   |   |   |         |   |   |   |   |         |   |   |   |   |   |   |   |   |   |   |   |   |   |   |   |   |   |   |   |   |   |   |   |   |   |   |   |   |   |   |   |   |   |   |   |   |   |
| 19         |                                      |  |   |   |   |   |         |   |   |   |   |         |   |   |   |   |         |   |   |   |   |         |   |   |   |   |   |   |   |   |   |   |   |   |   |   |   |   |   |   |   |   |   |   |   |   |   |   |   |   |   |   |   |   |   |   |   |   |   |
| 20         |                                      |  |   |   |   |   |         |   |   |   |   |         |   |   |   |   |         |   |   |   |   |         |   |   |   |   |   |   |   |   |   |   |   |   |   |   |   |   |   |   |   |   |   |   |   |   |   |   |   |   |   |   |   |   |   |   |   |   |   |
| NOTES      |                                      |  |   |   |   |   |         |   |   |   |   |         |   |   |   |   |         |   |   |   |   |         |   |   |   |   |   |   |   |   |   |   |   |   |   |   |   |   |   |   |   |   |   |   |   |   |   |   |   |   |   |   |   |   |   |   |   |   |   |

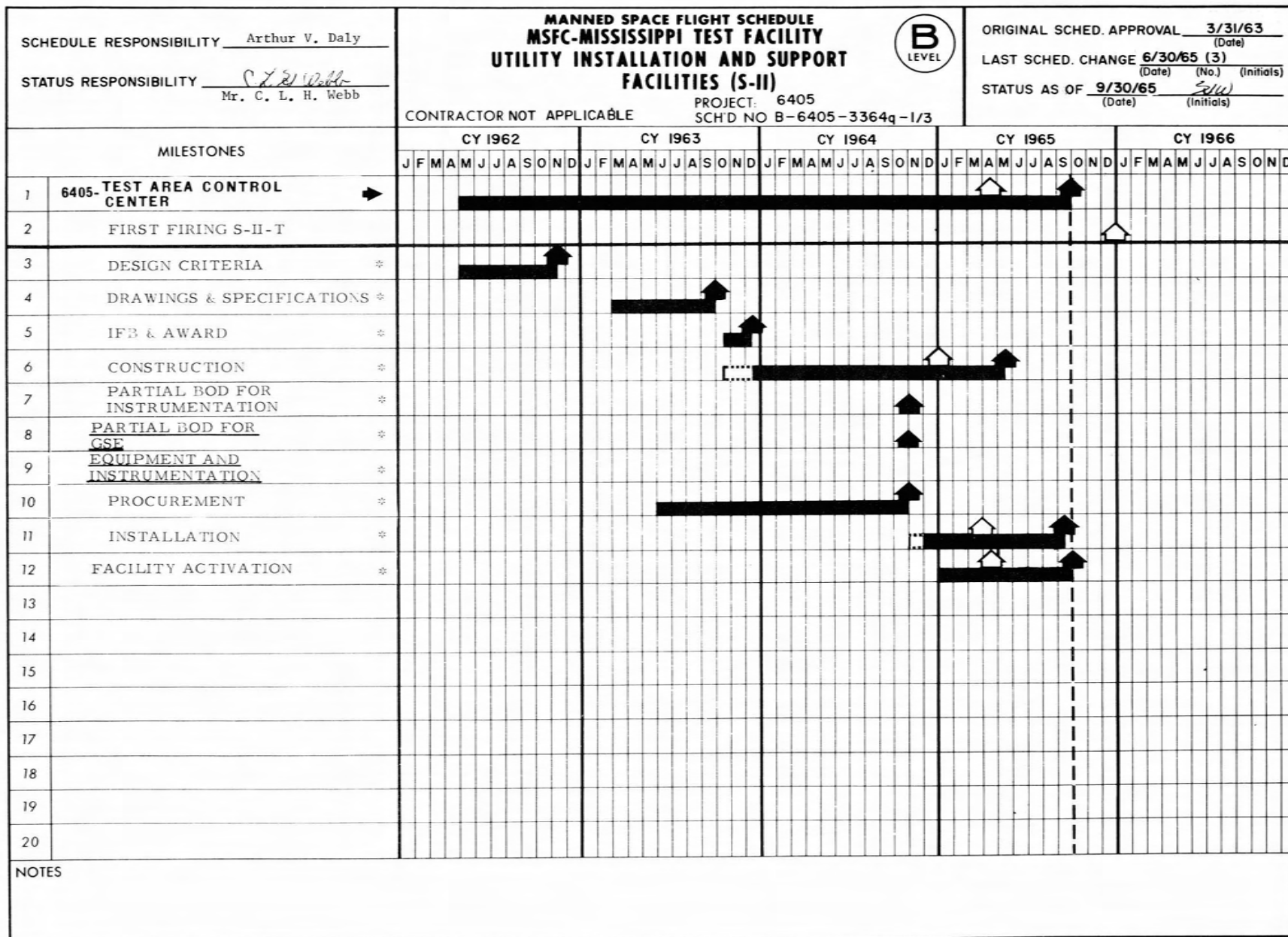
**MANNED SPACE FLIGHT SCHEDULE  
MSFC-MISSISSIPPI TEST FACILITY  
UTILITY INSTALLATION AND SUPPORT  
FACILITIES**

**B**  
LEVEL

ORIGINAL SCHED. APPROVAL 3/31/63  
(Date)  
LAST SCHED. CHANGE 6/30/65 (5)  
(Date) (No.) (Initials)  
STATUS AS OF 9/30/65  
(Date) (Initials)

CONTRACTOR NOT APPLICABLE PROJECT: 6405  
SCH'D NO B-6405-3364k-1/5





**MANNED SPACE FLIGHT SCHEDULE  
MSFC-MISSISSIPPI TEST FACILITY  
UTILITY INSTALLATION AND SUPPORT  
FACILITIES (S-II)**



ORIGINAL SCHED. APPROVAL 3/31/63  
(Date)  
LAST SCHED. CHANGE 6/30/65 (3)  
(Date) (No.) (Initials)  
STATUS AS OF 9/30/65  
(Date) (Initials)

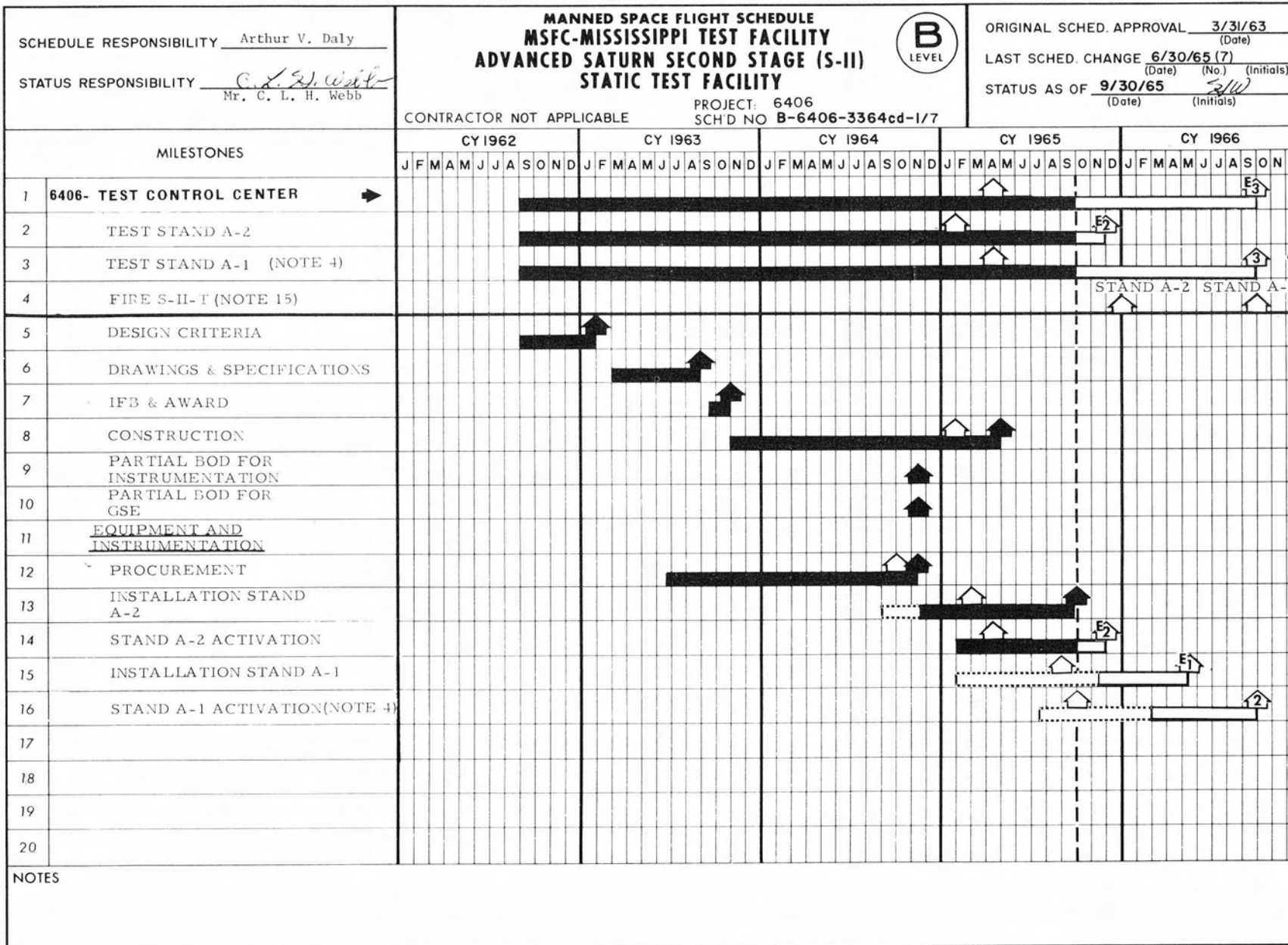
CONTRACTOR NOT APPLICABLE PROJECT: 6405  
SCH'D NO B-6405-3364q-1/3

SCHEDULE RESPONSIBILITY Arthur V. Daly

STATUS RESPONSIBILITY C. L. H. Webb  
Mr. C. L. H. Webb

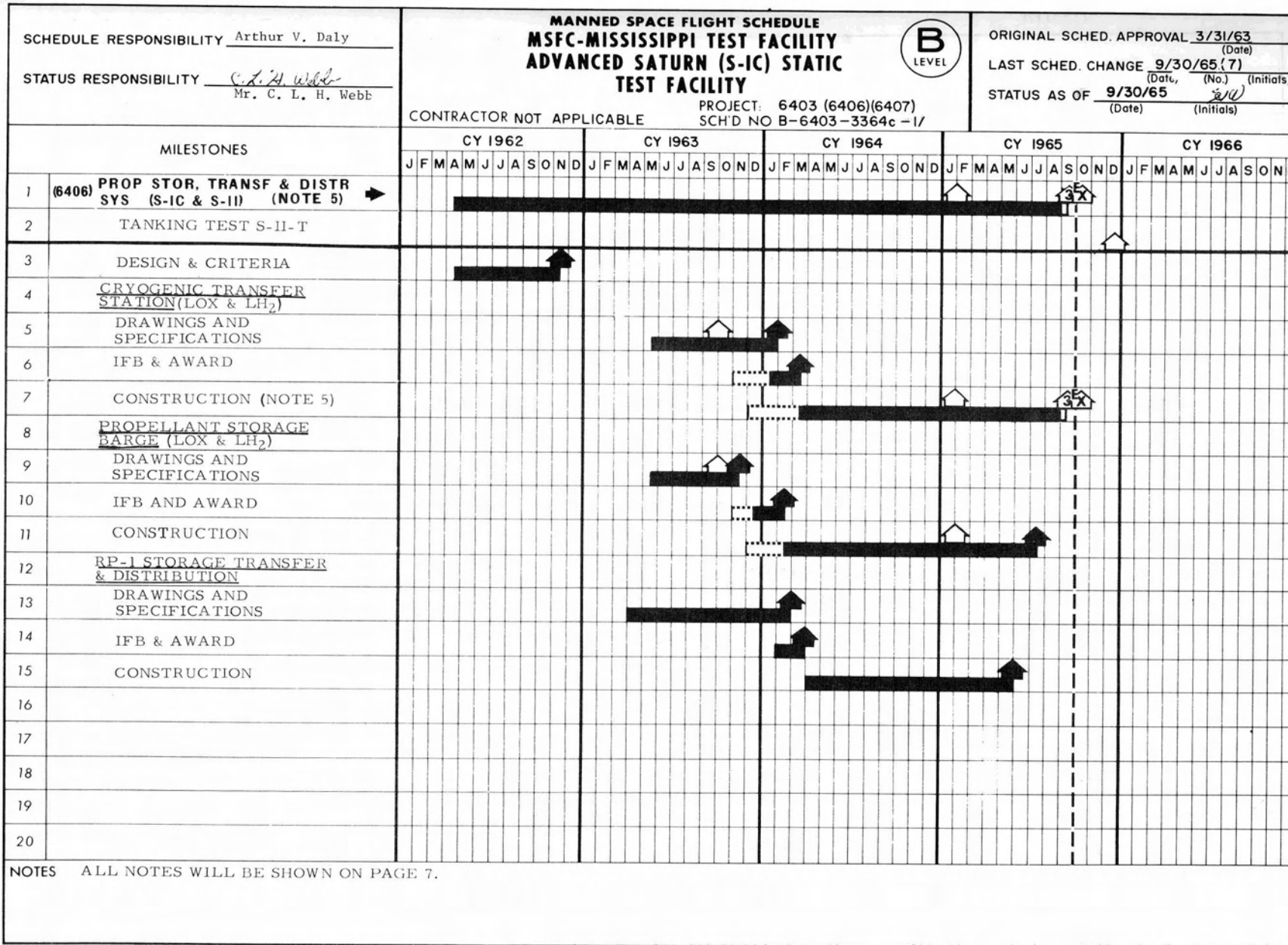






NOTES





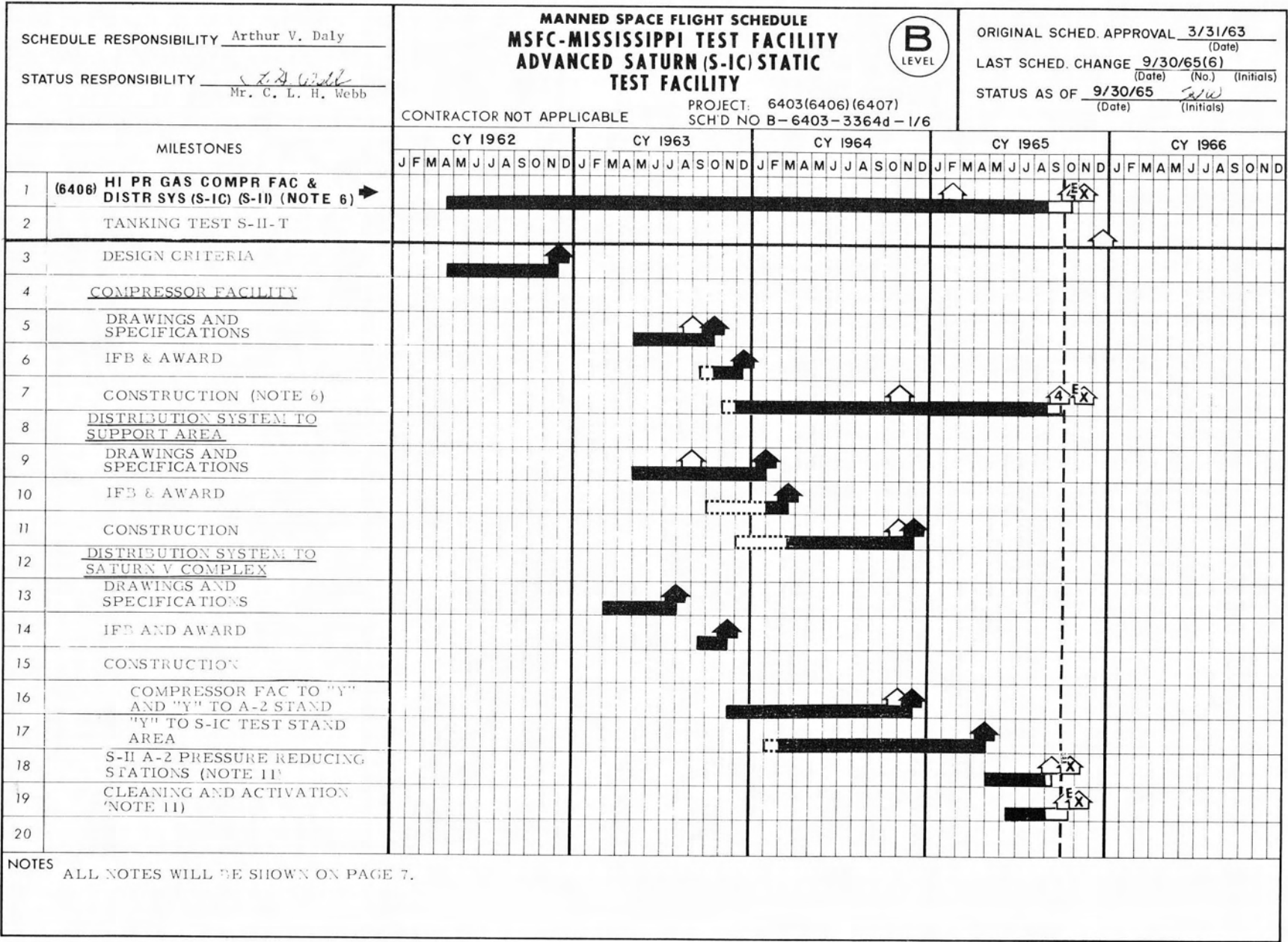
NOTES ALL NOTES WILL BE SHOWN ON PAGE 7.

**MANNED SPACE FLIGHT SCHEDULE  
MSFC-MISSISSIPPI TEST FACILITY  
ADVANCED SATURN (S-IC) STATIC  
TEST FACILITY**

**B**  
LEVEL

ORIGINAL SCHED. APPROVAL 3/31/63  
(Date)  
LAST SCHED. CHANGE 9/30/65 (7)  
(Date, (No.) (Initials))  
STATUS AS OF 9/30/65  
(Date) (Initials)

CONTRACTOR NOT APPLICABLE PROJECT: 6403 (6406)(6407)  
SCH'D NO B-6403-3364c-1/



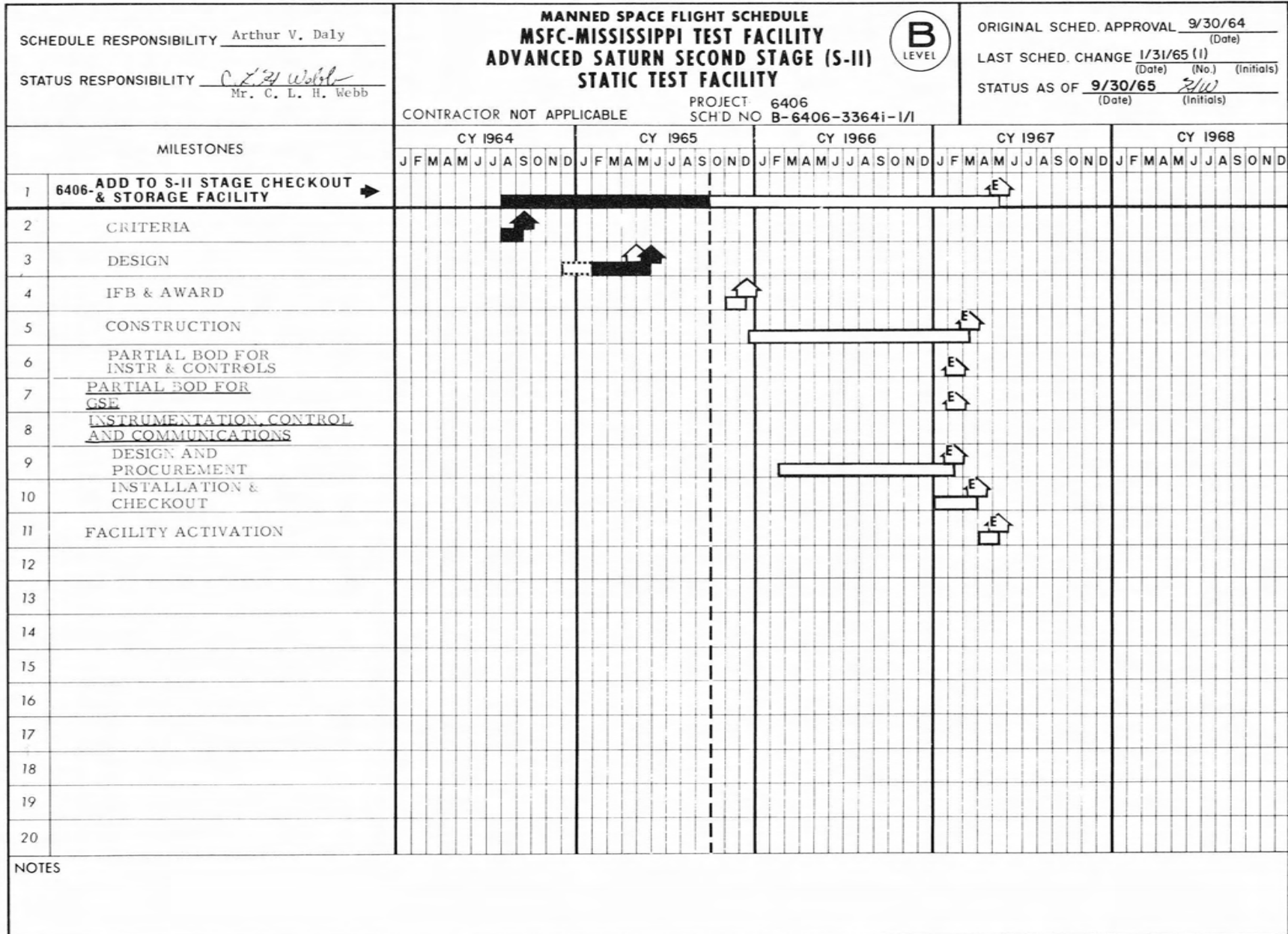
NOTES ALL NOTES WILL BE SHOWN ON PAGE 7.

| SCHEDULE RESPONSIBILITY <u>Arthur V. Daly</u><br>STATUS RESPONSIBILITY <u>C. L. H. Webb</u><br>Mr. C. L. H. Webb |   | <b>MANNED SPACE FLIGHT SCHEDULE</b><br><b>MSFC-MISSISSIPPI TEST FACILITY</b><br><b>ADVANCED SATURN (S-IC) STATIC</b><br><b>TEST FACILITY</b> |   | ORIGINAL SCHED. APPROVAL <u>3/31/63</u><br>(Date)<br>LAST SCHED. CHANGE <u>9/30/65(9)</u><br>(Date) (No.) (Initials)<br>STATUS AS OF <u>9/30/65</u> <u>J.W.</u><br>(Date) (Initials) |   |         |   |         |   |         |   |   |   |   |   |   |   |   |   |   |   |   |   |   |   |   |   |   |   |   |   |   |   |   |   |   |   |   |   |   |   |   |   |   |   |   |   |   |   |   |   |   |   |   |   |   |   |   |   |   |   |
|--|---|--|---|--|---|---------|---|---------|---|---------|---|---|---|---|---|---|---|---|---|---|---|---|---|---|---|---|---|---|---|---|---|---|---|---|---|---|---|---|---|---|---|---|---|---|---|---|---|---|---|---|---|---|---|---|---|---|---|---|---|---|---|
| MILESTONES   |   | CONTRACTOR NOT APPLICABLE  |   | PROJECT: 6403(6406)(6407)<br>SCH'D NO B-6403-3364e-1/9   |   |         |   |         |   |         |   |   |   |   |   |   |   |   |   |   |   |   |   |   |   |   |   |   |   |   |   |   |   |   |   |   |   |   |   |   |   |   |   |   |   |   |   |   |   |   |   |   |   |   |   |   |   |   |   |   |   |
|  |   | CY 1962  |   | CY 1963  |   | CY 1964 |   | CY 1965 |   | CY 1966 |   |   |   |   |   |   |   |   |   |   |   |   |   |   |   |   |   |   |   |   |   |   |   |   |   |   |   |   |   |   |   |   |   |   |   |   |   |   |   |   |   |   |   |   |   |   |   |   |   |   |   |
|  |   | J  | F | M  | A | M       | J | J       | A | S       | O | N | D | J | F | M | A | M | J | J | A | S | O | N | D | J | F | M | A | M | J | J | A | S | O | N | D | J | F | M | A | M | J | J | A | S | O | N | D | J | F | M | A | M | J | J | A | S | O | N | D |
| 1  | (6406) HI PR WATER STORAGE,PUMP<br>DISTR SYS (S-IC) (S-II) (NOTE 2) → |  |   |  |   |         |   |         |   |         |   |   |   |   |   |   |   |   |   |   |   |   |   |   |   |   |   |   |   |   |   |   |   |   |   |   |   |   |   |   |   |   |   |   |   |   |   |   |   |   |   |   |   |   |   |   |   |   |   |   |   |
| 2  |   |  |   |  |   |         |   |         |   |         |   |   |   |   |   |   |   |   |   |   |   |   |   |   |   |   |   |   |   |   |   |   |   |   |   |   |   |   |   |   |   |   |   |   |   |   |   |   |   |   |   |   |   |   |   |   |   |   |   |   |   |
| 3  | CRITERIA  |  |   |  |   |         |   |         |   |         |   |   |   |   |   |   |   |   |   |   |   |   |   |   |   |   |   |   |   |   |   |   |   |   |   |   |   |   |   |   |   |   |   |   |   |   |   |   |   |   |   |   |   |   |   |   |   |   |   |   |   |
| 4  | <u>PROCURE HI PR PUMPS</u><br><u>PHASE I</u>                          |  |   |  |   |         |   |         |   |         |   |   |   |   |   |   |   |   |   |   |   |   |   |   |   |   |   |   |   |   |   |   |   |   |   |   |   |   |   |   |   |   |   |   |   |   |   |   |   |   |   |   |   |   |   |   |   |   |   |   |   |
| 5  | DRAWINGS AND SPECIFICATIONS   |  |   |  |   |         |   |         |   |         |   |   |   |   |   |   |   |   |   |   |   |   |   |   |   |   |   |   |   |   |   |   |   |   |   |   |   |   |   |   |   |   |   |   |   |   |   |   |   |   |   |   |   |   |   |   |   |   |   |   |   |
| 6  | IFB & AWARD   |  |   |  |   |         |   |         |   |         |   |   |   |   |   |   |   |   |   |   |   |   |   |   |   |   |   |   |   |   |   |   |   |   |   |   |   |   |   |   |   |   |   |   |   |   |   |   |   |   |   |   |   |   |   |   |   |   |   |   |   |
| 7  | MANUFACTURING PROGRESS  |  |   |  |   |         |   |         |   |         |   |   |   |   |   |   |   |   |   |   |   |   |   |   |   |   |   |   |   |   |   |   |   |   |   |   |   |   |   |   |   |   |   |   |   |   |   |   |   |   |   |   |   |   |   |   |   |   |   |   |   |
| 8  | <u>INDUSTRIAL WATER WELL</u><br><u>NO. 1</u>                          |  |   |  |   |         |   |         |   |         |   |   |   |   |   |   |   |   |   |   |   |   |   |   |   |   |   |   |   |   |   |   |   |   |   |   |   |   |   |   |   |   |   |   |   |   |   |   |   |   |   |   |   |   |   |   |   |   |   |   |   |
| 9  | DRAWINGS AND SPECIFICATIONS   |  |   |  |   |         |   |         |   |         |   |   |   |   |   |   |   |   |   |   |   |   |   |   |   |   |   |   |   |   |   |   |   |   |   |   |   |   |   |   |   |   |   |   |   |   |   |   |   |   |   |   |   |   |   |   |   |   |   |   |   |
| 10   | IFB & AWARD   |  |   |  |   |         |   |         |   |         |   |   |   |   |   |   |   |   |   |   |   |   |   |   |   |   |   |   |   |   |   |   |   |   |   |   |   |   |   |   |   |   |   |   |   |   |   |   |   |   |   |   |   |   |   |   |   |   |   |   |   |
| 11   | CONSTRUCTION  |  |   |  |   |         |   |         |   |         |   |   |   |   |   |   |   |   |   |   |   |   |   |   |   |   |   |   |   |   |   |   |   |   |   |   |   |   |   |   |   |   |   |   |   |   |   |   |   |   |   |   |   |   |   |   |   |   |   |   |   |
| 12   | <u>INDUSTRIAL WATER WELLS</u><br><u>(2ND INCREMENT)</u>               |  |   |  |   |         |   |         |   |         |   |   |   |   |   |   |   |   |   |   |   |   |   |   |   |   |   |   |   |   |   |   |   |   |   |   |   |   |   |   |   |   |   |   |   |   |   |   |   |   |   |   |   |   |   |   |   |   |   |   |   |
| 13   | DRAWINGS AND SPECIFICATIONS   |  |   |  |   |         |   |         |   |         |   |   |   |   |   |   |   |   |   |   |   |   |   |   |   |   |   |   |   |   |   |   |   |   |   |   |   |   |   |   |   |   |   |   |   |   |   |   |   |   |   |   |   |   |   |   |   |   |   |   |   |
| 14   | IFB & AWARD   |  |   |  |   |         |   |         |   |         |   |   |   |   |   |   |   |   |   |   |   |   |   |   |   |   |   |   |   |   |   |   |   |   |   |   |   |   |   |   |   |   |   |   |   |   |   |   |   |   |   |   |   |   |   |   |   |   |   |   |   |
| 15   | CONSTRUCTION  |  |   |  |   |         |   |         |   |         |   |   |   |   |   |   |   |   |   |   |   |   |   |   |   |   |   |   |   |   |   |   |   |   |   |   |   |   |   |   |   |   |   |   |   |   |   |   |   |   |   |   |   |   |   |   |   |   |   |   |   |
| 16   | <u>PROCURE HI PR PUMPS</u><br><u>(PHASE II)</u>                       |  |   |  |   |         |   |         |   |         |   |   |   |   |   |   |   |   |   |   |   |   |   |   |   |   |   |   |   |   |   |   |   |   |   |   |   |   |   |   |   |   |   |   |   |   |   |   |   |   |   |   |   |   |   |   |   |   |   |   |   |
| 17   | DRAWINGS AND SPECIFICATIONS   |  |   |  |   |         |   |         |   |         |   |   |   |   |   |   |   |   |   |   |   |   |   |   |   |   |   |   |   |   |   |   |   |   |   |   |   |   |   |   |   |   |   |   |   |   |   |   |   |   |   |   |   |   |   |   |   |   |   |   |   |
| 18   | IFB & AWARD   |  |   |  |   |         |   |         |   |         |   |   |   |   |   |   |   |   |   |   |   |   |   |   |   |   |   |   |   |   |   |   |   |   |   |   |   |   |   |   |   |   |   |   |   |   |   |   |   |   |   |   |   |   |   |   |   |   |   |   |   |
| 19   | CONSTRUCTION  |  |   |  |   |         |   |         |   |         |   |   |   |   |   |   |   |   |   |   |   |   |   |   |   |   |   |   |   |   |   |   |   |   |   |   |   |   |   |   |   |   |   |   |   |   |   |   |   |   |   |   |   |   |   |   |   |   |   |   |   |
| 20   |   |  |   |  |   |         |   |         |   |         |   |   |   |   |   |   |   |   |   |   |   |   |   |   |   |   |   |   |   |   |   |   |   |   |   |   |   |   |   |   |   |   |   |   |   |   |   |   |   |   |   |   |   |   |   |   |   |   |   |   |   |
| NOTES<br>ALL NOTES WILL BE SHOWN ON PAGE 7.  |   |  |   |  |   |         |   |         |   |         |   |   |   |   |   |   |   |   |   |   |   |   |   |   |   |   |   |   |   |   |   |   |   |   |   |   |   |   |   |   |   |   |   |   |   |   |   |   |   |   |   |   |   |   |   |   |   |   |   |   |   |










| SCHEDULE RESPONSIBILITY <u>Arthur V. Daly</u><br>STATUS RESPONSIBILITY <u>C. L. H. Webb</u><br>Mr. C. L. H. Webb |  | <b>MANNED SPACE FLIGHT SCHEDULE</b><br><b>MSFC-MISSISSIPPI TEST FACILITY</b><br><b>BRIDGE FOR US INTERSTATE HIGHWAY 10</b> |   | <b>B</b><br>LEVEL                                | ORIGINAL SCHED. APPROVAL <u>3/31/65</u><br>(Date) |   |   |         |   |   |         |   |   |         |   |   |   |   |   |   |   |   |   |   |   |   |   |   |   |   |   |   |   |   |   |   |   |   |   |   |   |   |   |   |   |   |   |
|--|--|--|---|--|---|---|---|---------|---|---|---------|---|---|---------|---|---|---|---|---|---|---|---|---|---|---|---|---|---|---|---|---|---|---|---|---|---|---|---|---|---|---|---|---|---|---|---|---|
|  |  | CONTRACTOR NOT APPLICABLE  |   | PROJECT: 6410<br>SCH'D NO B-6410-3364-1          |   | LAST SCHED. CHANGE _____<br>(Date) (No.) (Initials) |   |         |   |   |         |   |   |         |   |   |   |   |   |   |   |   |   |   |   |   |   |   |   |   |   |   |   |   |   |   |   |   |   |   |   |   |   |   |   |   |   |
|  |  |  |   | STATUS AS OF <u>9/30/65</u><br>(Date) (Initials) |   |   |   |         |   |   |         |   |   |         |   |   |   |   |   |   |   |   |   |   |   |   |   |   |   |   |   |   |   |   |   |   |   |   |   |   |   |   |   |   |   |   |   |
| MILESTONES   |  | CY 1964  |   |  | CY 1965   |   |   | CY 1966 |   |   | CY 1967 |   |   | CY 1968 |   |   |   |   |   |   |   |   |   |   |   |   |   |   |   |   |   |   |   |   |   |   |   |   |   |   |   |   |   |   |   |   |   |
|  |  | J  | F | M  | A   | M   | J | J       | A | S | O       | N | D | J       | F | M | A | M | J | J | A | S | O | N | D | J | F | M | A | M | J | J | A | S | O | N | D | J | F | M | A | M | J | J | A | S | O |
| 1  | 6410-BRIDGE FOR U.S. INTERSTATE HIGHWAY 10 → |  |   |  |   |   |   |         |   |   |         |   |   |         |   |   |   |   |   |   |   |   |   |   |   |   |   |   |   |   |   |   |   |   |   |   |   |   |   |   |   |   |   |   |   |   |   |
| 2  | DESIGN                                       |  |   |  |   |   |   |         |   |   |         |   |   |         |   |   |   |   |   |   |   |   |   |   |   |   |   |   |   |   |   |   |   |   |   |   |   |   |   |   |   |   |   |   |   |   |   |
| 3  | IFB AND AWARD                                |  |   |  |   |   |   |         |   |   |         |   |   |         |   |   |   |   |   |   |   |   |   |   |   |   |   |   |   |   |   |   |   |   |   |   |   |   |   |   |   |   |   |   |   |   |   |
| 4  | CONSTRUCTION                                 |  |   |  |   |   |   |         |   |   |         |   |   |         |   |   |   |   |   |   |   |   |   |   |   |   |   |   |   |   |   |   |   |   |   |   |   |   |   |   |   |   |   |   |   |   |   |
| 5  |  |  |   |  |   |   |   |         |   |   |         |   |   |         |   |   |   |   |   |   |   |   |   |   |   |   |   |   |   |   |   |   |   |   |   |   |   |   |   |   |   |   |   |   |   |   |   |
| 6  |  |  |   |  |   |   |   |         |   |   |         |   |   |         |   |   |   |   |   |   |   |   |   |   |   |   |   |   |   |   |   |   |   |   |   |   |   |   |   |   |   |   |   |   |   |   |   |
| 7  |  |  |   |  |   |   |   |         |   |   |         |   |   |         |   |   |   |   |   |   |   |   |   |   |   |   |   |   |   |   |   |   |   |   |   |   |   |   |   |   |   |   |   |   |   |   |   |
| 8  |  |  |   |  |   |   |   |         |   |   |         |   |   |         |   |   |   |   |   |   |   |   |   |   |   |   |   |   |   |   |   |   |   |   |   |   |   |   |   |   |   |   |   |   |   |   |   |
| 9  |  |  |   |  |   |   |   |         |   |   |         |   |   |         |   |   |   |   |   |   |   |   |   |   |   |   |   |   |   |   |   |   |   |   |   |   |   |   |   |   |   |   |   |   |   |   |   |
| 10   |  |  |   |  |   |   |   |         |   |   |         |   |   |         |   |   |   |   |   |   |   |   |   |   |   |   |   |   |   |   |   |   |   |   |   |   |   |   |   |   |   |   |   |   |   |   |   |
| 11   |  |  |   |  |   |   |   |         |   |   |         |   |   |         |   |   |   |   |   |   |   |   |   |   |   |   |   |   |   |   |   |   |   |   |   |   |   |   |   |   |   |   |   |   |   |   |   |
| 12   |  |  |   |  |   |   |   |         |   |   |         |   |   |         |   |   |   |   |   |   |   |   |   |   |   |   |   |   |   |   |   |   |   |   |   |   |   |   |   |   |   |   |   |   |   |   |   |
| 13   |  |  |   |  |   |   |   |         |   |   |         |   |   |         |   |   |   |   |   |   |   |   |   |   |   |   |   |   |   |   |   |   |   |   |   |   |   |   |   |   |   |   |   |   |   |   |   |
| 14   |  |  |   |  |   |   |   |         |   |   |         |   |   |         |   |   |   |   |   |   |   |   |   |   |   |   |   |   |   |   |   |   |   |   |   |   |   |   |   |   |   |   |   |   |   |   |   |
| 15   |  |  |   |  |   |   |   |         |   |   |         |   |   |         |   |   |   |   |   |   |   |   |   |   |   |   |   |   |   |   |   |   |   |   |   |   |   |   |   |   |   |   |   |   |   |   |   |
| 16   |  |  |   |  |   |   |   |         |   |   |         |   |   |         |   |   |   |   |   |   |   |   |   |   |   |   |   |   |   |   |   |   |   |   |   |   |   |   |   |   |   |   |   |   |   |   |   |
| 17   |  |  |   |  |   |   |   |         |   |   |         |   |   |         |   |   |   |   |   |   |   |   |   |   |   |   |   |   |   |   |   |   |   |   |   |   |   |   |   |   |   |   |   |   |   |   |   |
| 18   |  |  |   |  |   |   |   |         |   |   |         |   |   |         |   |   |   |   |   |   |   |   |   |   |   |   |   |   |   |   |   |   |   |   |   |   |   |   |   |   |   |   |   |   |   |   |   |
| 19   |  |  |   |  |   |   |   |         |   |   |         |   |   |         |   |   |   |   |   |   |   |   |   |   |   |   |   |   |   |   |   |   |   |   |   |   |   |   |   |   |   |   |   |   |   |   |   |
| 20   |  |  |   |  |   |   |   |         |   |   |         |   |   |         |   |   |   |   |   |   |   |   |   |   |   |   |   |   |   |   |   |   |   |   |   |   |   |   |   |   |   |   |   |   |   |   |   |
| NOTES  |  |  |   |  |   |   |   |         |   |   |         |   |   |         |   |   |   |   |   |   |   |   |   |   |   |   |   |   |   |   |   |   |   |   |   |   |   |   |   |   |   |   |   |   |   |   |   |

| SCHEDULE RESPONSIBILITY <u>Arthur V. Daly</u>  |                                    | MANNED SPACE FLIGHT SCHEDULE<br>MSFC-MISSISSIPPI TEST FACILITY<br>SONIC MEASURING FACILITIES |   |  |   | ORIGINAL SCHED. APPROVAL <u>3/31/63</u> |   |         |   |         |   |   |   |   |   |   |   |   |   |   |   |   |   |   |   |   |   |   |   |   |   |   |   |   |   |   |   |   |   |   |   |   |   |   |   |   |   |   |   |   |   |   |   |   |   |   |   |   |   |
|--|------------------------------------|--|---|---|---|---|---|---------|---|---------|---|---|---|---|---|---|---|---|---|---|---|---|---|---|---|---|---|---|---|---|---|---|---|---|---|---|---|---|---|---|---|---|---|---|---|---|---|---|---|---|---|---|---|---|---|---|---|---|---|
|  |                                    |  |   |   |   | (Date)                                  |   |         |   |         |   |   |   |   |   |   |   |   |   |   |   |   |   |   |   |   |   |   |   |   |   |   |   |   |   |   |   |   |   |   |   |   |   |   |   |   |   |   |   |   |   |   |   |   |   |   |   |   |   |
| STATUS RESPONSIBILITY <u>Mr. C. L. H. Webb</u> |                                    | CONTRACTOR NOT APPLICABLE  |   | PROJECT: 6417   |   | LAST SCHED. CHANGE <u>1/31/65 (4)</u>   |   |         |   |         |   |   |   |   |   |   |   |   |   |   |   |   |   |   |   |   |   |   |   |   |   |   |   |   |   |   |   |   |   |   |   |   |   |   |   |   |   |   |   |   |   |   |   |   |   |   |   |   |   |
|  |                                    |  |   | SCH'D NO B-6417-3364-1/4  |   | (Date) (No.) (Initials)                 |   |         |   |         |   |   |   |   |   |   |   |   |   |   |   |   |   |   |   |   |   |   |   |   |   |   |   |   |   |   |   |   |   |   |   |   |   |   |   |   |   |   |   |   |   |   |   |   |   |   |   |   |   |
| MILESTONES                                     |                                    | CY 1962  |   | CY 1963   |   | CY 1964                                 |   | CY 1965 |   | CY 1966 |   |   |   |   |   |   |   |   |   |   |   |   |   |   |   |   |   |   |   |   |   |   |   |   |   |   |   |   |   |   |   |   |   |   |   |   |   |   |   |   |   |   |   |   |   |   |   |   |   |
|  |                                    | J  | F | M   | A | M                                       | J | J       | A | S       | O | N | D | J | F | M | A | M | J | J | A | S | O | N | D | J | F | M | A | M | J | J | A | S | O | N | D | J | F | M | A | M | J | J | A | S | O | N | D | J | F | M | A | M | J | J | A | S | O |
| 1  | 6417- SONIC MEASURING FACILITIES → | [Solid bar from start of 1963 to end of 1965]  |   |   |   |   |   |         |   |         |   |   |   |   |   |   |   |   |   |   |   |   |   |   |   |   |   |   |   |   |   |   |   |   |   |   |   |   |   |   |   |   |   |   |   |   |   |   |   |   |   |   |   |   |   |   |   |   |   |
| 2  | CRITERIA *                         | [Solid bar from start of 1963 to end of 1963]  |   |   |   |   |   |         |   |         |   |   |   |   |   |   |   |   |   |   |   |   |   |   |   |   |   |   |   |   |   |   |   |   |   |   |   |   |   |   |   |   |   |   |   |   |   |   |   |   |   |   |   |   |   |   |   |   |   |
| 3  | ACOUSTIC LABORATORY *              | [Dashed bar from start of 1964 to end of 1965]   |   |   |   |   |   |         |   |         |   |   |   |   |   |   |   |   |   |   |   |   |   |   |   |   |   |   |   |   |   |   |   |   |   |   |   |   |   |   |   |   |   |   |   |   |   |   |   |   |   |   |   |   |   |   |   |   |   |
| 4  | METEOROLOGICAL LABORATORY *        | [Dashed bar from start of 1964 to end of 1965]   |   |   |   |   |   |         |   |         |   |   |   |   |   |   |   |   |   |   |   |   |   |   |   |   |   |   |   |   |   |   |   |   |   |   |   |   |   |   |   |   |   |   |   |   |   |   |   |   |   |   |   |   |   |   |   |   |   |
| 5  |                                    |  |   |   |   |   |   |         |   |         |   |   |   |   |   |   |   |   |   |   |   |   |   |   |   |   |   |   |   |   |   |   |   |   |   |   |   |   |   |   |   |   |   |   |   |   |   |   |   |   |   |   |   |   |   |   |   |   |   |
| 6  |                                    |  |   |   |   |   |   |         |   |         |   |   |   |   |   |   |   |   |   |   |   |   |   |   |   |   |   |   |   |   |   |   |   |   |   |   |   |   |   |   |   |   |   |   |   |   |   |   |   |   |   |   |   |   |   |   |   |   |   |
| 7  |                                    |  |   |   |   |   |   |         |   |         |   |   |   |   |   |   |   |   |   |   |   |   |   |   |   |   |   |   |   |   |   |   |   |   |   |   |   |   |   |   |   |   |   |   |   |   |   |   |   |   |   |   |   |   |   |   |   |   |   |
| 8  |                                    |  |   |   |   |   |   |         |   |         |   |   |   |   |   |   |   |   |   |   |   |   |   |   |   |   |   |   |   |   |   |   |   |   |   |   |   |   |   |   |   |   |   |   |   |   |   |   |   |   |   |   |   |   |   |   |   |   |   |
| 9  |                                    |  |   |   |   |   |   |         |   |         |   |   |   |   |   |   |   |   |   |   |   |   |   |   |   |   |   |   |   |   |   |   |   |   |   |   |   |   |   |   |   |   |   |   |   |   |   |   |   |   |   |   |   |   |   |   |   |   |   |
| 10   |                                    |  |   |   |   |   |   |         |   |         |   |   |   |   |   |   |   |   |   |   |   |   |   |   |   |   |   |   |   |   |   |   |   |   |   |   |   |   |   |   |   |   |   |   |   |   |   |   |   |   |   |   |   |   |   |   |   |   |   |
| 11   |                                    |  |   |   |   |   |   |         |   |         |   |   |   |   |   |   |   |   |   |   |   |   |   |   |   |   |   |   |   |   |   |   |   |   |   |   |   |   |   |   |   |   |   |   |   |   |   |   |   |   |   |   |   |   |   |   |   |   |   |
| 12   |                                    |  |   |   |   |   |   |         |   |         |   |   |   |   |   |   |   |   |   |   |   |   |   |   |   |   |   |   |   |   |   |   |   |   |   |   |   |   |   |   |   |   |   |   |   |   |   |   |   |   |   |   |   |   |   |   |   |   |   |
| 13   |                                    |  |   |   |   |   |   |         |   |         |   |   |   |   |   |   |   |   |   |   |   |   |   |   |   |   |   |   |   |   |   |   |   |   |   |   |   |   |   |   |   |   |   |   |   |   |   |   |   |   |   |   |   |   |   |   |   |   |   |
| 14   |                                    |  |   |   |   |   |   |         |   |         |   |   |   |   |   |   |   |   |   |   |   |   |   |   |   |   |   |   |   |   |   |   |   |   |   |   |   |   |   |   |   |   |   |   |   |   |   |   |   |   |   |   |   |   |   |   |   |   |   |
| 15   |                                    |  |   |   |   |   |   |         |   |         |   |   |   |   |   |   |   |   |   |   |   |   |   |   |   |   |   |   |   |   |   |   |   |   |   |   |   |   |   |   |   |   |   |   |   |   |   |   |   |   |   |   |   |   |   |   |   |   |   |
| 16   |                                    |  |   |   |   |   |   |         |   |         |   |   |   |   |   |   |   |   |   |   |   |   |   |   |   |   |   |   |   |   |   |   |   |   |   |   |   |   |   |   |   |   |   |   |   |   |   |   |   |   |   |   |   |   |   |   |   |   |   |
| 17   |                                    |  |   |   |   |   |   |         |   |         |   |   |   |   |   |   |   |   |   |   |   |   |   |   |   |   |   |   |   |   |   |   |   |   |   |   |   |   |   |   |   |   |   |   |   |   |   |   |   |   |   |   |   |   |   |   |   |   |   |
| 18   |                                    |  |   |   |   |   |   |         |   |         |   |   |   |   |   |   |   |   |   |   |   |   |   |   |   |   |   |   |   |   |   |   |   |   |   |   |   |   |   |   |   |   |   |   |   |   |   |   |   |   |   |   |   |   |   |   |   |   |   |
| 19   |                                    |  |   |   |   |   |   |         |   |         |   |   |   |   |   |   |   |   |   |   |   |   |   |   |   |   |   |   |   |   |   |   |   |   |   |   |   |   |   |   |   |   |   |   |   |   |   |   |   |   |   |   |   |   |   |   |   |   |   |
| 20   |                                    |  |   |   |   |   |   |         |   |         |   |   |   |   |   |   |   |   |   |   |   |   |   |   |   |   |   |   |   |   |   |   |   |   |   |   |   |   |   |   |   |   |   |   |   |   |   |   |   |   |   |   |   |   |   |   |   |   |   |
| NOTES  |                                    |  |   |   |   |   |   |         |   |         |   |   |   |   |   |   |   |   |   |   |   |   |   |   |   |   |   |   |   |   |   |   |   |   |   |   |   |   |   |   |   |   |   |   |   |   |   |   |   |   |   |   |   |   |   |   |   |   |   |

|   |  |  |   |         |  |         |   |         |   |         |   |   |   |   |   |   |   |   |   |   |   |   |   |   |   |   |   |   |   |   |   |   |   |   |   |   |   |   |   |   |   |   |   |   |   |   |   |   |   |   |   |   |   |   |   |   |   |   |   |   |   |
|---|--|--|---|---------|--|---------|---|---------|---|---------|---|---|---|---|---|---|---|---|---|---|---|---|---|---|---|---|---|---|---|---|---|---|---|---|---|---|---|---|---|---|---|---|---|---|---|---|---|---|---|---|---|---|---|---|---|---|---|---|---|---|---|
| SCHEDULE RESPONSIBILITY <u>Arthur V. Daly</u><br>STATUS RESPONSIBILITY <u>C. L. H. Webb</u><br><small>Mr. C. L. H. Webb</small> |  | <b>MANNED SPACE FLIGHT SCHEDULE</b><br><b>MSFC-MISSISSIPPI TEST FACILITY</b><br><b>TRANSPORTATION &amp; PARKING FACILITIES</b> |   |         | ORIGINAL SCHED. APPROVAL <u>3/31/63</u><br><small>(Date)</small><br>LAST SCHED. CHANGE <u>6/30/65 (2)</u><br><small>(Date) (No.) (Initials)</small><br>STATUS AS OF <u>9/30/65</u><br><small>(Date) (Initials)</small> |         |   |         |   |         |   |   |   |   |   |   |   |   |   |   |   |   |   |   |   |   |   |   |   |   |   |   |   |   |   |   |   |   |   |   |   |   |   |   |   |   |   |   |   |   |   |   |   |   |   |   |   |   |   |   |   |
|   |  | CONTRACTOR NOT APPLICABLE<br>PROJECT: 6418<br>SCH'D NO B-6418-3364a-1/2  |   |         | (B)<br>LEVEL   |         |   |         |   |         |   |   |   |   |   |   |   |   |   |   |   |   |   |   |   |   |   |   |   |   |   |   |   |   |   |   |   |   |   |   |   |   |   |   |   |   |   |   |   |   |   |   |   |   |   |   |   |   |   |   |   |
| MILESTONES  |  | CY 1962  |   | CY 1963 |  | CY 1964 |   | CY 1965 |   | CY 1966 |   |   |   |   |   |   |   |   |   |   |   |   |   |   |   |   |   |   |   |   |   |   |   |   |   |   |   |   |   |   |   |   |   |   |   |   |   |   |   |   |   |   |   |   |   |   |   |   |   |   |   |
|   |  | J  | F | M       | A  | M       | J | J       | A | S       | O | N | D | J | F | M | A | M | J | J | A | S | O | N | D | J | F | M | A | M | J | J | A | S | O | N | D | J | F | M | A | M | J | J | A | S | O | N | D | J | F | M | A | M | J | J | A | S | O | N | D |
| 1   | 6418- ROADS & PARKING →  |  |   |         |  |         |   |         |   |         |   |   |   |   |   |   |   |   |   |   |   |   |   |   |   |   |   |   |   |   |   |   |   |   |   |   |   |   |   |   |   |   |   |   |   |   |   |   |   |   |   |   |   |   |   |   |   |   |   |   |   |
| 2   | CRITERIA   |  |   |         |  |         |   |         |   |         |   |   |   |   |   |   |   |   |   |   |   |   |   |   |   |   |   |   |   |   |   |   |   |   |   |   |   |   |   |   |   |   |   |   |   |   |   |   |   |   |   |   |   |   |   |   |   |   |   |   |   |
| 3   | ROADS - <u>A</u> , <u>B</u> , <u>G</u> , <u>J</u> , <u>L</u> , <u>L<sub>2</sub></u> & <u>P</u> |  |   |         |  |         |   |         |   |         |   |   |   |   |   |   |   |   |   |   |   |   |   |   |   |   |   |   |   |   |   |   |   |   |   |   |   |   |   |   |   |   |   |   |   |   |   |   |   |   |   |   |   |   |   |   |   |   |   |   |   |
| 4   | ROAD - <u>H</u>  |  |   |         |  |         |   |         |   |         |   |   |   |   |   |   |   |   |   |   |   |   |   |   |   |   |   |   |   |   |   |   |   |   |   |   |   |   |   |   |   |   |   |   |   |   |   |   |   |   |   |   |   |   |   |   |   |   |   |   |   |
| 5   | ROAD - <u>M</u>  |  |   |         |  |         |   |         |   |         |   |   |   |   |   |   |   |   |   |   |   |   |   |   |   |   |   |   |   |   |   |   |   |   |   |   |   |   |   |   |   |   |   |   |   |   |   |   |   |   |   |   |   |   |   |   |   |   |   |   |   |
| 6   | ROAD - <u>A</u> - WEST LANES **  |  |   |         |  |         |   |         |   |         |   |   |   |   |   |   |   |   |   |   |   |   |   |   |   |   |   |   |   |   |   |   |   |   |   |   |   |   |   |   |   |   |   |   |   |   |   |   |   |   |   |   |   |   |   |   |   |   |   |   |   |
| 7   |  |  |   |         |  |         |   |         |   |         |   |   |   |   |   |   |   |   |   |   |   |   |   |   |   |   |   |   |   |   |   |   |   |   |   |   |   |   |   |   |   |   |   |   |   |   |   |   |   |   |   |   |   |   |   |   |   |   |   |   |   |
| 8   |  |  |   |         |  |         |   |         |   |         |   |   |   |   |   |   |   |   |   |   |   |   |   |   |   |   |   |   |   |   |   |   |   |   |   |   |   |   |   |   |   |   |   |   |   |   |   |   |   |   |   |   |   |   |   |   |   |   |   |   |   |
| 9   |  |  |   |         |  |         |   |         |   |         |   |   |   |   |   |   |   |   |   |   |   |   |   |   |   |   |   |   |   |   |   |   |   |   |   |   |   |   |   |   |   |   |   |   |   |   |   |   |   |   |   |   |   |   |   |   |   |   |   |   |   |
| 10  |  |  |   |         |  |         |   |         |   |         |   |   |   |   |   |   |   |   |   |   |   |   |   |   |   |   |   |   |   |   |   |   |   |   |   |   |   |   |   |   |   |   |   |   |   |   |   |   |   |   |   |   |   |   |   |   |   |   |   |   |   |
| 11  |  |  |   |         |  |         |   |         |   |         |   |   |   |   |   |   |   |   |   |   |   |   |   |   |   |   |   |   |   |   |   |   |   |   |   |   |   |   |   |   |   |   |   |   |   |   |   |   |   |   |   |   |   |   |   |   |   |   |   |   |   |
| 12  |  |  |   |         |  |         |   |         |   |         |   |   |   |   |   |   |   |   |   |   |   |   |   |   |   |   |   |   |   |   |   |   |   |   |   |   |   |   |   |   |   |   |   |   |   |   |   |   |   |   |   |   |   |   |   |   |   |   |   |   |   |
| 13  |  |  |   |         |  |         |   |         |   |         |   |   |   |   |   |   |   |   |   |   |   |   |   |   |   |   |   |   |   |   |   |   |   |   |   |   |   |   |   |   |   |   |   |   |   |   |   |   |   |   |   |   |   |   |   |   |   |   |   |   |   |
| 14  |  |  |   |         |  |         |   |         |   |         |   |   |   |   |   |   |   |   |   |   |   |   |   |   |   |   |   |   |   |   |   |   |   |   |   |   |   |   |   |   |   |   |   |   |   |   |   |   |   |   |   |   |   |   |   |   |   |   |   |   |   |
| 15  |  |  |   |         |  |         |   |         |   |         |   |   |   |   |   |   |   |   |   |   |   |   |   |   |   |   |   |   |   |   |   |   |   |   |   |   |   |   |   |   |   |   |   |   |   |   |   |   |   |   |   |   |   |   |   |   |   |   |   |   |   |
| 16  |  |  |   |         |  |         |   |         |   |         |   |   |   |   |   |   |   |   |   |   |   |   |   |   |   |   |   |   |   |   |   |   |   |   |   |   |   |   |   |   |   |   |   |   |   |   |   |   |   |   |   |   |   |   |   |   |   |   |   |   |   |
| 17  |  |  |   |         |  |         |   |         |   |         |   |   |   |   |   |   |   |   |   |   |   |   |   |   |   |   |   |   |   |   |   |   |   |   |   |   |   |   |   |   |   |   |   |   |   |   |   |   |   |   |   |   |   |   |   |   |   |   |   |   |   |
| 18  |  |  |   |         |  |         |   |         |   |         |   |   |   |   |   |   |   |   |   |   |   |   |   |   |   |   |   |   |   |   |   |   |   |   |   |   |   |   |   |   |   |   |   |   |   |   |   |   |   |   |   |   |   |   |   |   |   |   |   |   |   |
| 19  |  |  |   |         |  |         |   |         |   |         |   |   |   |   |   |   |   |   |   |   |   |   |   |   |   |   |   |   |   |   |   |   |   |   |   |   |   |   |   |   |   |   |   |   |   |   |   |   |   |   |   |   |   |   |   |   |   |   |   |   |   |
| 20  |  |  |   |         |  |         |   |         |   |         |   |   |   |   |   |   |   |   |   |   |   |   |   |   |   |   |   |   |   |   |   |   |   |   |   |   |   |   |   |   |   |   |   |   |   |   |   |   |   |   |   |   |   |   |   |   |   |   |   |   |   |
| NOTES   |  |  |   |         |  |         |   |         |   |         |   |   |   |   |   |   |   |   |   |   |   |   |   |   |   |   |   |   |   |   |   |   |   |   |   |   |   |   |   |   |   |   |   |   |   |   |   |   |   |   |   |   |   |   |   |   |   |   |   |   |   |

2587 - Form 157-5 (October 1963)



|  |  |  |  |                         |                         |  |
|--|--|--|--|-------------------------|-------------------------|--|
| SCHEDULE RESPONSIBILITY <u>Arthur V. Daly</u><br>STATUS RESPONSIBILITY <u>C. L. H. Webb</u><br>Mr. C. L. H. Webb | <b>MANNED SPACE FLIGHT SCHEDULE</b><br><b>MSFC-MISSISSIPPI TEST FACILITY</b><br><b>TRANSPORTATION AND PARKING</b><br><b>FACILITY</b> | <div style="border: 1px solid black; border-radius: 50%; width: 30px; height: 30px; display: flex; align-items: center; justify-content: center; margin: 0 auto;"> <div style="font-size: 24px; font-weight: bold; margin: 0 5px;">B</div> <div style="font-size: 8px; font-weight: bold; margin: 0 5px;">LEVEL</div> </div> | ORIGINAL SCHED. APPROVAL <u>3/31/63</u><br><small>(Date)</small><br>LAST SCHED. CHANGE <u>9/30/65 (2)</u><br><small>(Date) (No.) (Initials)</small><br>STATUS AS OF <u>9/30/65</u> <u>AW</u><br><small>(Date) (Initials)</small> |                         |                         |  |
| CONTRACTOR NOT APPLICABLE  |  | PROJECT: 6418<br>SCH'D NO B-6418-3364-1/2  |  |                         |                         |  |
| MILESTONES   | CY 1963  | CY 1964  | CY 1965  | CY 1966                 | CY 1967                 |  |
|  | J F M A M J J A S O N D  | J F M A M J J A S O N D  | J F M A M J J A S O N D  | J F M A M J J A S O N D | J F M A M J J A S O N D |  |
| 1  | 6418- RELOCATION OF STATE HIGHWAY NO. 43 (NOTE 7) →  |  |  |                         |                         |  |
| 2  | DRAWINGS AND SPECIFICATIONS  |  |  |                         |                         |  |
| 3  | CONSTRUCTION (NOTE 7)  |  |  |                         |                         |  |
| 4  |  |  |  |                         |                         |  |
| 5  |  |  |  |                         |                         |  |
| 6  |  |  |  |                         |                         |  |
| 7  |  |  |  |                         |                         |  |
| 8  |  |  |  |                         |                         |  |
| 9  |  |  |  |                         |                         |  |
| 10   |  |  |  |                         |                         |  |
| 11   |  |  |  |                         |                         |  |
| 12   |  |  |  |                         |                         |  |
| 13   |  |  |  |                         |                         |  |
| 14   |  |  |  |                         |                         |  |
| 15   |  |  |  |                         |                         |  |
| 16   |  |  |  |                         |                         |  |
| 17   |  |  |  |                         |                         |  |
| 18   |  |  |  |                         |                         |  |
| 19   |  |  |  |                         |                         |  |
| 20   |  |  |  |                         |                         |  |
| NOTES ALL NOTES WILL BE SHOWN ON PAGE 7.   |  |  |  |                         |                         |  |





| MILESTONES |  | CY 1963                               |   |   |   |   | CY 1964 |   |   |   |   | CY 1965 |   |   |   |   | CY 1966 |   |   |   |   | CY 1967 |   |   |   |   |   |   |   |   |   |   |   |   |   |   |   |   |   |   |   |   |   |   |   |   |   |   |   |   |   |   |   |   |   |   |   |   |   |
|------------|--|---------------------------------------|---|---|---|---|---------|---|---|---|---|---------|---|---|---|---|---------|---|---|---|---|---------|---|---|---|---|---|---|---|---|---|---|---|---|---|---|---|---|---|---|---|---|---|---|---|---|---|---|---|---|---|---|---|---|---|---|---|---|---|
|            |  | J                                     | F | M | A | M | J       | J | A | S | O | N       | D | J | F | M | A       | M | J | J | A | S       | O | N | D | J | F | M | A | M | J | J | A | S | O | N | D | J | F | M | A | M | J | J | A | S | O | N | D | J | F | M | A | M | J | J | A | S | O |
| 1          | 64XX- LH <sub>2</sub> PLANT (NOTE 10) →                            | [Gantt bar from Jan 1963 to Aug 1965] |   |   |   |   |         |   |   |   |   |         |   |   |   |   |         |   |   |   |   |         |   |   |   |   |   |   |   |   |   |   |   |   |   |   |   |   |   |   |   |   |   |   |   |   |   |   |   |   |   |   |   |   |   |   |   |   |   |
| 2          |  |                                       |   |   |   |   |         |   |   |   |   |         |   |   |   |   |         |   |   |   |   |         |   |   |   |   |   |   |   |   |   |   |   |   |   |   |   |   |   |   |   |   |   |   |   |   |   |   |   |   |   |   |   |   |   |   |   |   |   |
| 3          | PREP PROCUREMENT PLAN  | [Gantt bar from Jan 1963 to Feb 1963] |   |   |   |   |         |   |   |   |   |         |   |   |   |   |         |   |   |   |   |         |   |   |   |   |   |   |   |   |   |   |   |   |   |   |   |   |   |   |   |   |   |   |   |   |   |   |   |   |   |   |   |   |   |   |   |   |   |
| 4          | HQ APPROVAL OF SELECTION   | [Gantt bar from Mar 1963 to Apr 1963] |   |   |   |   |         |   |   |   |   |         |   |   |   |   |         |   |   |   |   |         |   |   |   |   |   |   |   |   |   |   |   |   |   |   |   |   |   |   |   |   |   |   |   |   |   |   |   |   |   |   |   |   |   |   |   |   |   |
| 5          | ISSUE RFQ  | [Gantt bar from May 1963 to Jun 1963] |   |   |   |   |         |   |   |   |   |         |   |   |   |   |         |   |   |   |   |         |   |   |   |   |   |   |   |   |   |   |   |   |   |   |   |   |   |   |   |   |   |   |   |   |   |   |   |   |   |   |   |   |   |   |   |   |   |
| 6          | PROPOSALS AND EVALUATIONS  | [Gantt bar from Jul 1963 to Aug 1963] |   |   |   |   |         |   |   |   |   |         |   |   |   |   |         |   |   |   |   |         |   |   |   |   |   |   |   |   |   |   |   |   |   |   |   |   |   |   |   |   |   |   |   |   |   |   |   |   |   |   |   |   |   |   |   |   |   |
| 7          | HQ APPROVAL OF SELECTION   | [Gantt bar from Sep 1963 to Oct 1963] |   |   |   |   |         |   |   |   |   |         |   |   |   |   |         |   |   |   |   |         |   |   |   |   |   |   |   |   |   |   |   |   |   |   |   |   |   |   |   |   |   |   |   |   |   |   |   |   |   |   |   |   |   |   |   |   |   |
| 8          | COMPLETE CONTRACT NEGOTIATIONS                                     | [Gantt bar from Nov 1963 to Dec 1963] |   |   |   |   |         |   |   |   |   |         |   |   |   |   |         |   |   |   |   |         |   |   |   |   |   |   |   |   |   |   |   |   |   |   |   |   |   |   |   |   |   |   |   |   |   |   |   |   |   |   |   |   |   |   |   |   |   |
| 9          | HQ APPROVAL OF CONTRACT  | [Gantt bar from Jan 1964 to Feb 1964] |   |   |   |   |         |   |   |   |   |         |   |   |   |   |         |   |   |   |   |         |   |   |   |   |   |   |   |   |   |   |   |   |   |   |   |   |   |   |   |   |   |   |   |   |   |   |   |   |   |   |   |   |   |   |   |   |   |
| 10         | <u>COMPLETION-DESIGN, CONSTR OF LH<sub>2</sub> AND LOX STORAGE</u> |                                       |   |   |   |   |         |   |   |   |   |         |   |   |   |   |         |   |   |   |   |         |   |   |   |   |   |   |   |   |   |   |   |   |   |   |   |   |   |   |   |   |   |   |   |   |   |   |   |   |   |   |   |   |   |   |   |   |   |
| 11         | DOCKING FACILITY (NOTE 10)   | [Gantt bar from Mar 1964 to Aug 1965] |   |   |   |   |         |   |   |   |   |         |   |   |   |   |         |   |   |   |   |         |   |   |   |   |   |   |   |   |   |   |   |   |   |   |   |   |   |   |   |   |   |   |   |   |   |   |   |   |   |   |   |   |   |   |   |   |   |
| 12         | COMPL DESIGN CONSTR & START-UP LH <sub>2</sub> PLANT (NOTE 10)     | [Gantt bar from Mar 1964 to Aug 1965] |   |   |   |   |         |   |   |   |   |         |   |   |   |   |         |   |   |   |   |         |   |   |   |   |   |   |   |   |   |   |   |   |   |   |   |   |   |   |   |   |   |   |   |   |   |   |   |   |   |   |   |   |   |   |   |   |   |
| 13         |  |                                       |   |   |   |   |         |   |   |   |   |         |   |   |   |   |         |   |   |   |   |         |   |   |   |   |   |   |   |   |   |   |   |   |   |   |   |   |   |   |   |   |   |   |   |   |   |   |   |   |   |   |   |   |   |   |   |   |   |
| 14         |  |                                       |   |   |   |   |         |   |   |   |   |         |   |   |   |   |         |   |   |   |   |         |   |   |   |   |   |   |   |   |   |   |   |   |   |   |   |   |   |   |   |   |   |   |   |   |   |   |   |   |   |   |   |   |   |   |   |   |   |
| 15         |  |                                       |   |   |   |   |         |   |   |   |   |         |   |   |   |   |         |   |   |   |   |         |   |   |   |   |   |   |   |   |   |   |   |   |   |   |   |   |   |   |   |   |   |   |   |   |   |   |   |   |   |   |   |   |   |   |   |   |   |
| 16         |  |                                       |   |   |   |   |         |   |   |   |   |         |   |   |   |   |         |   |   |   |   |         |   |   |   |   |   |   |   |   |   |   |   |   |   |   |   |   |   |   |   |   |   |   |   |   |   |   |   |   |   |   |   |   |   |   |   |   |   |
| 17         |  |                                       |   |   |   |   |         |   |   |   |   |         |   |   |   |   |         |   |   |   |   |         |   |   |   |   |   |   |   |   |   |   |   |   |   |   |   |   |   |   |   |   |   |   |   |   |   |   |   |   |   |   |   |   |   |   |   |   |   |
| 18         |  |                                       |   |   |   |   |         |   |   |   |   |         |   |   |   |   |         |   |   |   |   |         |   |   |   |   |   |   |   |   |   |   |   |   |   |   |   |   |   |   |   |   |   |   |   |   |   |   |   |   |   |   |   |   |   |   |   |   |   |
| 19         |  |                                       |   |   |   |   |         |   |   |   |   |         |   |   |   |   |         |   |   |   |   |         |   |   |   |   |   |   |   |   |   |   |   |   |   |   |   |   |   |   |   |   |   |   |   |   |   |   |   |   |   |   |   |   |   |   |   |   |   |
| 20         |  |                                       |   |   |   |   |         |   |   |   |   |         |   |   |   |   |         |   |   |   |   |         |   |   |   |   |   |   |   |   |   |   |   |   |   |   |   |   |   |   |   |   |   |   |   |   |   |   |   |   |   |   |   |   |   |   |   |   |   |

NOTES ALL NOTES WILL BE SHOWN ON PAGE 7.

MSFC Form 1-27-65 (Revised 1963)



**A PROPOSAL  
FOR  
C OF F SARP**



|   |  |   |
|---|--|---|
| SCHEDULE RESPONSIBILITY _____<br>STATUS REponsIBILITY _____ | <b>MANNED SPACE FLIGHT SCHEDULE</b><br><br><div style="display: flex; justify-content: space-around; align-items: center;"> <div style="border: 1px solid black; border-radius: 50%; padding: 5px;">LEVEL</div> <div style="text-align: right;">           PROJECT:<br/>SCH'D NO         </div> </div><br>CONTRACTOR | ORIGINAL SCHED. APPROVAL _____ (Date)<br>LAST SCHED. CHANGE _____ (Date) (No.) (Initials)<br>STATUS AS OF _____ (Date) (Initials) |
|---|--|---|

A PROPOSAL FOR C OF F SARP

THIS IS A REEVALUATION OF MTF C OF F SARP SCHEDULES SHIFTING THE EMPHASIS FROM THE PROJECTS TO CONTRACTS OR FACILITY ITEMS. THESE SCHEDULES WILL MORE CLOSELY IDENTIFY THE CONSTRUCTION AND ACTIVATION OF INDIVIDUAL FACILITY END USE ITEMS.

THIS REEVALUATION WILL PROVIDE, AT A GLANCE, SCHEDULE INFORMATION PREVIOUSLY REQUIRING BOTH LEVEL "A" AND LEVEL "B" SCHEDULES. IT WILL ALSO PROVIDE A HISTORIC RECORD OF LEVEL "B" SCHEDULE INFORMATION PREVIOUSLY DROPPED WHEN THE LEVEL "B" SCHEDULES WERE COMPLETED.

THE OCTOBER SUBMISSION CONTAINS 30 PAGES OF SCHEDULE CHARTS FOR MTF - THIS PROPOSAL REQUIRES 9 PAGES. IT IS ESTIMATED THAT THIS PROPOSAL WILL REDUCE THE TOTAL COST OF PREPARING AND PRINTING THIS C OF F SARP BOOK BY 50%.

IF ACCEPTED, THE FOLLOWING PAGES WILL REPLACE THE PRECEEDING SCHEDULES IN THE NOVEMBER SUBMISSION. THIS REEVALUATION WILL THEN BE EXTENDED TO THE HUNTSVILLE, MICHLOUD AND VARIOUS LOCATION BOOKS AT THE RATE OF ONE PER MONTH.

SCHEDULE RESPONSIBILITY \_\_\_\_\_

STATUS RESPONSIBILITY \_\_\_\_\_

**MANNED SPACE FLIGHT SCHEDULE  
TABLE OF CONTENTS  
VOLUME VII-FACILITIES  
BOOK 4-MSFC-MISSISSIPPI**



ORIGINAL SCHED. APPROVAL \_\_\_\_\_ (Date)

LAST SCHED. CHANGE \_\_\_\_\_ (Date) (No.) (Initials)

STATUS AS OF \_\_\_\_\_ (Date) (Initials)

CONTRACTOR \_\_\_\_\_

PROJECT:  
SCH'D NO \_\_\_\_\_

**SATURN V TEST COMPLEX**

(A) Saturn S-IC Static Test Facility

Position B-2

- 1. Excavation, Piling & Pile Cap
- 2. Substructure
- 3. Construction of Superstructure
- 4. Instrumentation & Controls

Test Control Center

- 1. Construction of Building
- 2. Instrumentation & Controls

Activation of Position B-2

Position B-1

- 1. Construction of Superstructure
- 2. Instrumentation & Controls

Activation of Position B-1

(B) Saturn S-II Test Facility

Position A-2

- 1. Excavation, Piling & Pile Cap
- 2. TS A-2 Superstructure
- 3. Instrumentation & Controls

Test Control Center

- 1. TCC Construction
- 2. Instrumentation & Controls

Activation of Position A-2

Completion of Instal & C/O of GSE

Position A-1

- 1. Excavation, Piling & Pile Cap
- 2. TS A-1 Superstructure
- 3. Instrumentation & Controls

(C) Test Support Facilities

Data Acquisition Center

- 1. Instrumentation & Controls

High Pressure Gas Comp Fac

- 1. Distribution to Service Area
- 2. Distribution to Test Complex

Prop Stor Trans & Distr Sta-LOX & LH<sub>2</sub> Area

- 1. Propellant Storage Barges
- 2. RPI Storage Transfer & Dist

Hi Pr Water Storage Pump & Distr Sys

- 1. Distribution to S-II TS A-2
- 2. Distribution to S-II TS A-1
- 3. Distribution to S-IC TS

VII-4-1

VII-4-2

VII-4-3

**ENGINEERING AND ADMINISTRATION COMPLEX**

Support Facilities

- Communications & Telephone Building
- Test Area Control Center
- Instrumentation & Controls
- Data Handling Center
- Instrumentation & Controls
- Office and Administration Building
- Electronics Instr & Materials Lab
- Sonic Measuring Facilities
- Central Heating Plant

VII-4-4

**INDUSTRIAL COMPLEX**

Service Facilities

- Components Service Fac
- Emergency Services Bldg
- Site Maintenance Bldg
- Test Maintenance Bldg
- Compressed Gas Cylinder Storage
- Inflammable MTL Storage
- Warehouse
- Additions to Warehouse
- Mobile Equipment Operation Bldg
- S-IC Stage Storage Bldg
- S-II Stage C/O & Storage Facility
- Cryogenic Barge Service Bldg
- Security Control Facility

VII-4-5

**TRANSPORTATION & MISC**

(A) Railroads

- Railroad & Switching Yard
- Railroad to Hi Pr Gas Fac & Warehouse Spur

(B) Roads

- "E" & Construction Dock
- "E", "J", & "H"
- "J", "P" & "B" WEST
- Hy 43 Relocation
- "A", "H", "K", & "L" Partial
- Roads, Parking Areas & Scales (Road "A" West Lane)

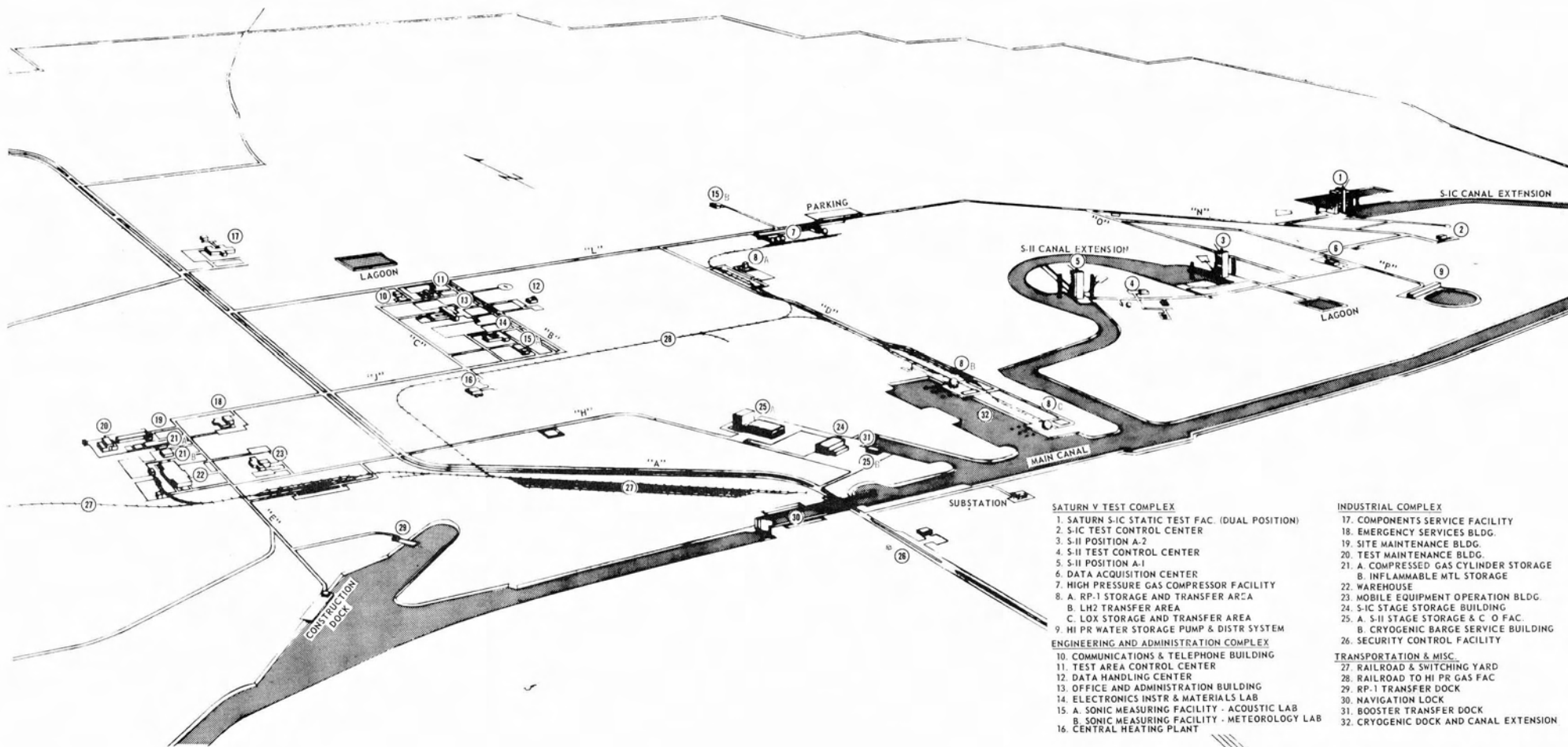
VII-4-6

|  |  |   |
|--|--|---|
| SCHEDULE RESPONSIBILITY _____<br>STATUS REPOSIBILITY _____ | <b>MANNED SPACE FLIGHT SCHEDULE<br/>         TABLE OF CONTENTS<br/>         VOLUME VII-FACILITIES<br/>         BOOK 4-MSFC-MISSISSIPPI</b><br>PROJECT: _____<br>SCH'D NO _____<br>CONTRACTOR _____ | <div style="text-align: center;">  <br/>LEVEL         </div> ORIGINAL SCHED. APPROVAL _____ (Date)<br>LAST SCHED. CHANGE _____ (Date) (No.) (Initials)<br>STATUS AS OF _____ (Date) (Initials) |
|--|--|---|

TRANSPORATION & MISC (CONT'D)

|                                       |         |
|---------------------------------------|---------|
| (C) Canals & Docks                    | VII-4-7 |
| Harbor Dredging                       |         |
| Snagging & Clearing Banks             |         |
| Dredge E. Pearl River                 |         |
| Canal From River to Lock              |         |
| RP-1 Transfer Dock                    |         |
| Navigation Lock                       |         |
| 1. Excavate for Lock & Bascule Bridge |         |
| 2. Lock & Canal Water Supply          |         |
| 3. Bascule Bridge                     |         |
| Main Canal                            |         |
| Booster Transfer Dock                 |         |
| Cryogenic Dock and Canal Extension    |         |
| Mooring Devices and Piers             |         |
| S-II Canal Extension                  |         |
| S-IC Canal Extension                  |         |

|                            |         |
|----------------------------|---------|
| NOTES                      | VII-4-8 |
| PROJECT IDENTIFICATION KEY | VII-4-9 |



**SATURN V TEST COMPLEX**

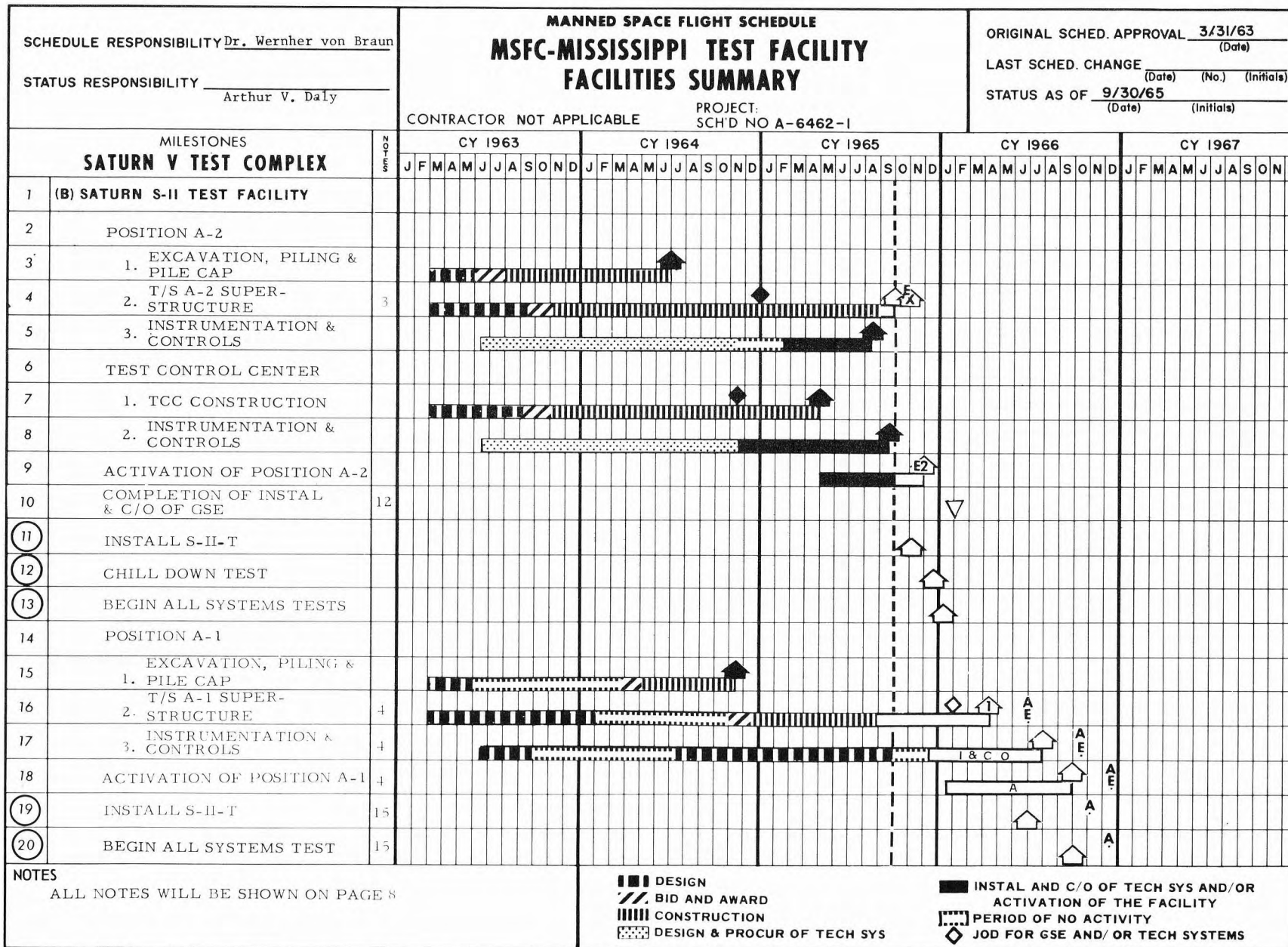
- 1. SATURN S-IC STATIC TEST FAC. (DUAL POSITION)
  - 2. S-IC TEST CONTROL CENTER
  - 3. S-II POSITION A-2
  - 4. S-II TEST CONTROL CENTER
  - 5. S-II POSITION A-1
  - 6. DATA ACQUISITION CENTER
  - 7. HIGH PRESSURE GAS COMPRESSOR FACILITY
  - 8. A. RP-1 STORAGE AND TRANSFER AREA  
B. LH2 TRANSFER AREA  
C. LOX STORAGE AND TRANSFER AREA
  - 9. HI PR WATER STORAGE PUMP & DISTR SYSTEM
- ENGINEERING AND ADMINISTRATION COMPLEX**
- 10. COMMUNICATIONS & TELEPHONE BUILDING
  - 11. TEST AREA CONTROL CENTER
  - 12. DATA HANDLING CENTER
  - 13. OFFICE AND ADMINISTRATION BUILDING
  - 14. ELECTRONICS INSTR & MATERIALS LAB
  - 15. A. SONIC MEASURING FACILITY - ACOUSTIC LAB  
B. SONIC MEASURING FACILITY - METEOROLOGY LAB
  - 16. CENTRAL HEATING PLANT

**INDUSTRIAL COMPLEX**

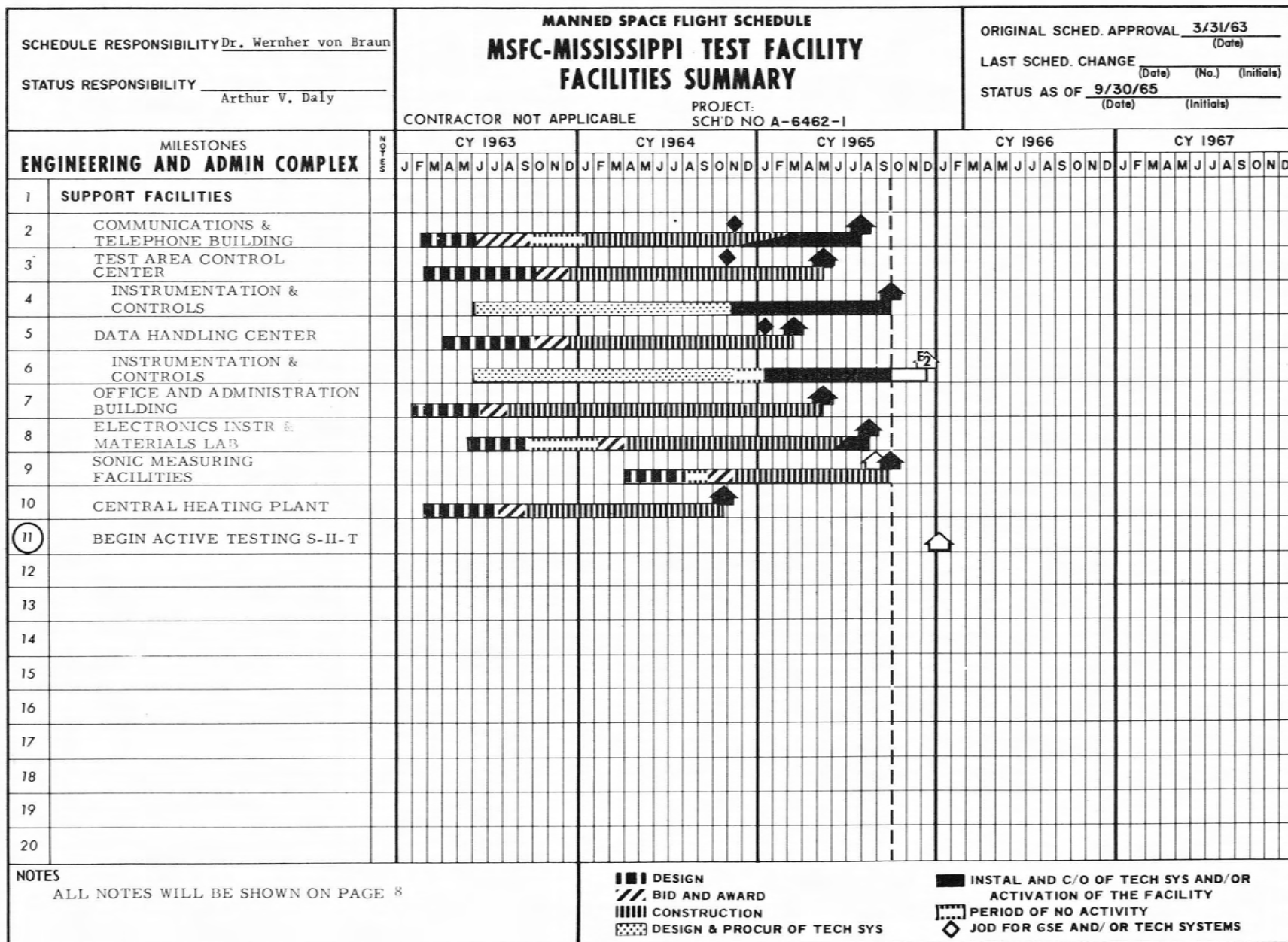
- 17. COMPONENTS SERVICE FACILITY
  - 18. EMERGENCY SERVICES BLDG.
  - 19. SITE MAINTENANCE BLDG.
  - 20. TEST MAINTENANCE BLDG.
  - 21. A. COMPRESSED GAS CYLINDER STORAGE  
B. INFLAMMABLE MTL STORAGE
  - 22. WAREHOUSE
  - 23. MOBILE EQUIPMENT OPERATION BLDG.
  - 24. S-IC STAGE STORAGE BUILDING
  - 25. A. S-II STAGE STORAGE & C/D FAC.  
B. CRYOGENIC BARGE SERVICE BUILDING
  - 26. SECURITY CONTROL FACILITY
- TRANSPORTATION & MISC.**
- 27. RAILROAD & SWITCHING YARD
  - 28. RAILROAD TO HI PR GAS FAC
  - 29. RP-1 TRANSFER DOCK
  - 30. NAVIGATION LOCK
  - 31. BOOSTER TRANSFER DOCK
  - 32. CRYOGENIC DOCK AND CANAL EXTENSION

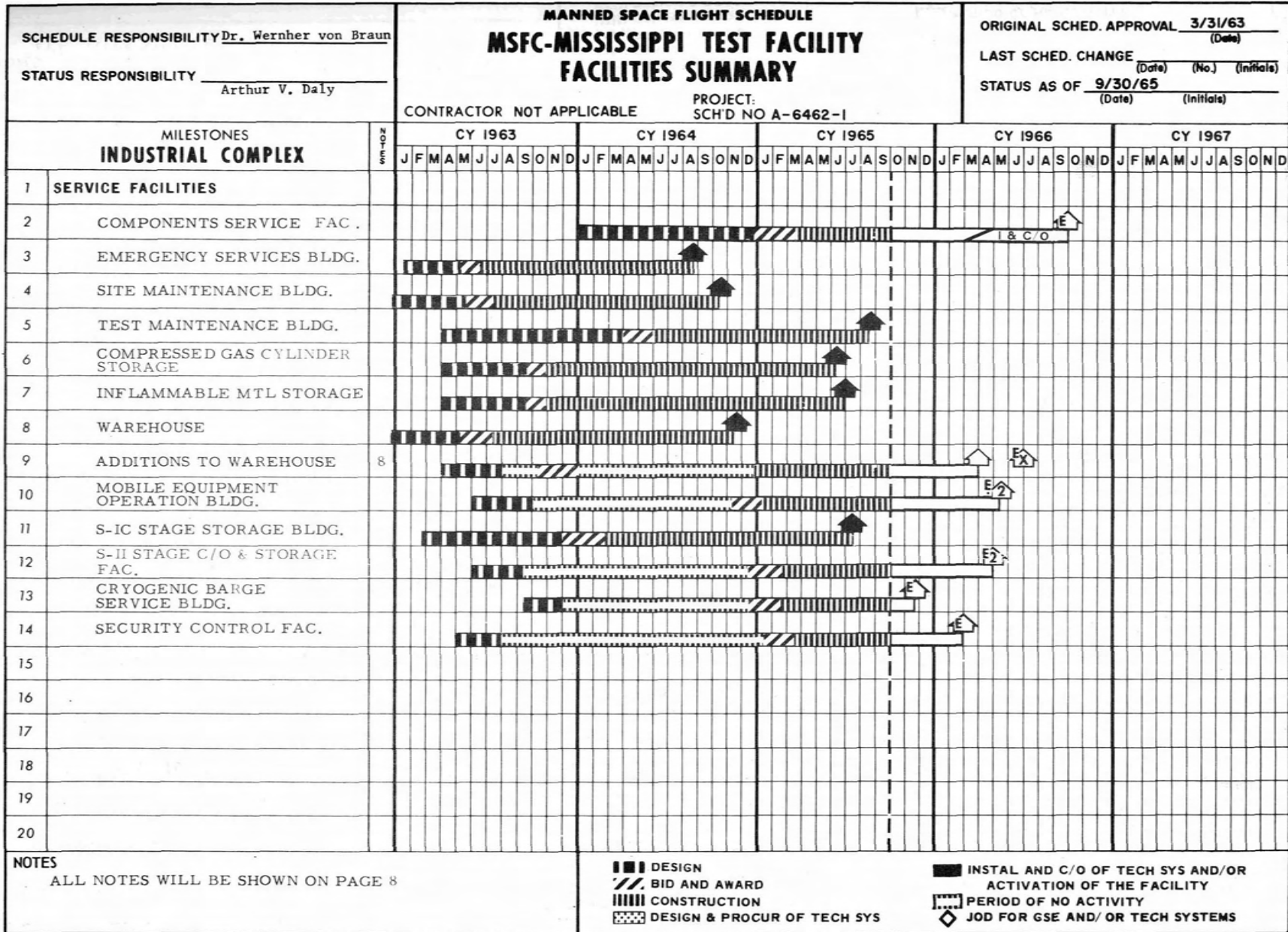












MSFC - Form 1975-5 (October 1963)











SCHEDULE RESPONSIBILITY \_\_\_\_\_

STATUS RESPONSIBILITY \_\_\_\_\_

MANNED SPACE FLIGHT SCHEDULE  
**MSFC-MISSISSIPPI TEST FACILITY**  
**PROJECT IDENTIFICATION KEY**



ORIGINAL SCHED. APPROVAL \_\_\_\_\_ (Date)

LAST SCHED. CHANGE \_\_\_\_\_ (Date) (No.) (Initials)

STATUS AS OF \_\_\_\_\_ (Date) (Initials)

CONTRACTOR \_\_\_\_\_

PROJECT:  
SCH'D NO \_\_\_\_\_

| Page No. | Line No. | Related Project Number and Fiscal Year | Page No. | Line No. | Related Project Number and Fiscal Year | Page No. | Line No. | Related Project Number and Fiscal Year |
|----------|----------|--|----------|----------|--|----------|----------|--|
| 1        | 2        | 6403/63, 64                            |          |          |  |          |          |  |
|          | 7        | 6403/63, 64                            |          |          |  |          |          |  |
|          | 13       | 6403/63, 64                            |          |          |  |          |          |  |
| 2        | 2        | 6406/63, 64                            |          |          |  |          |          |  |
|          | 6        | 6406/63, 64                            |          |          |  |          |          |  |
|          | 13       | 6406/63, 64                            |          |          |  |          |          |  |
|          |          | Et cetera                              |          |          |  |          |          |  |

**NOTE: IF THIS PROPOSAL IS ACCEPTED THIS CHART WILL BE COMPLETED WITH NEXT SUBMISSION.**