

Copy No. _____

Accession No. 00186-64

PRELIMINARY
NASA SUPPORT DOCUMENT

SATURN S-II
GROUND SUPPORT EQUIPMENT
INSPECTION MANUAL

SM-S-II-21

SID 63-641

CONTRACT NAS 7-200

NORTH AMERICAN AVIATION, INC.
SPACE AND INFORMATION SYSTEMS DIVISION

Available to NASA Offices, NASA
Centers, and NASA Contractors
Only.

PUBLISHED UNDER AUTHORITY OF NATIONAL AERONAUTICS AND SPACE ADMINISTRATION

FACILITY FORM 000

CLASSIFICATION NUMBER: 165

DATE: CR-100326

MAKER OR TITLE OF AS NUMBER: _____

STATUS: 28

LABORATORY: 11

X65-11706

6 JANUARY 1964

INSERT LATEST CHANGED PAGES. DESTROY SUPERSEDED PAGES.

LIST OF EFFECTIVE PAGES

NOTE: The portion of the text affected by the changes is indicated by a vertical line in the outer margins of the page.

TOTAL NUMBER OF PAGES IN THIS PUBLICATION IS 194,
CONSISTING OF THE FOLLOWING:

Page No.	Issue
Title	Original
A	Original
i thru x	Original
1-1 thru 1-25 . . .	Original
1-26 Blank	Original
2-1 thru 2-16 . . .	Original
3-1 thru 3-16 . . .	Original
4-1 thru 4-20 . . .	Original
5-1 thru 5-4	Original
6-1 thru 6-7	Original
6-8 Blank	Original
7-1 thru 7-15 . . .	Original
7-16 Blank	Original
8-1 thru 8-12 . . .	Original
9-1 thru 9-47 . . .	Original
9-48 Blank	Original
10-1 thru 10-16 . .	Original

Available to NASA Offices, NASA
Centers, and NASA Contractors/
Only.

TABLE OF CONTENTS

Section	Title	Page
	INTRODUCTION	vii
	LIST OF MANUALS	viii
	SAFETY PRECAUTIONS	ix
I	AUXILIARY EQUIPMENT	1-1
	1-1. General	1-1
II	CHECKOUT AND CONTROL EQUIPMENT	2-1
	2-1. General	2-1
III	COMPUTER COMPLEX	3-1
	3-1. General	3-1
IV	ELECTRICAL CHECKOUT STATION	4-1
	4-1. General	4-1
V	RADIO FREQUENCY CHECKOUT STATION	5-1
	5-1. General	5-1
VI	DIGITAL DATA CHECKOUT STATION	6-1
	6-1. General	6-1
VII	TELEMETER CHECKOUT STATION	7-1
	7-1. General	7-1
VIII	MECHANICAL CHECKOUT STATION	8-1
	8-1. General	8-1

Section	Title	Page
IX	HANDLING EQUIPMENT	9-1
	9-1. General	9-1
X	SERVICING EQUIPMENT	10-1
	10-1. General	10-1

LIST OF TABLES

Table No.	Title	Page
1-1.	A7-3 Instrumentation Unit, Transport	1-2
1-2.	A7-4 Leak Detector, Helium	1-3
1-3.	A7-6 Cover Set, Electrical Connector	1-4
1-4.	A7-7 Cover Set, Fluid Connector	1-5
1-5.	A7-8 Streamer Set, Warning	1-6
1-6.	A7-12 Platform, Engine Compartment, Vertical	1-7
1-7.	A7-12 Platform, Engine Compartment, Vertical, Components	1-9
1-8.	A7-14 Engine Compartment Light Set	1-10
1-9.	A7-15 Alignment Set, Thrust	1-11
1-10.	A7-17 Fixture, Alignment, Auxiliary Engine	1-12
1-11.	A7-34 Indicator No. 1, Piston Position	1-13
1-12.	A7-35 Servicing Mechanism, LH ₂ Tank	1-14
1-13.	A7-36 Indicator, Pump Shaft Seal Visual Leakage	1-15
1-14.	A7-37 Shield, Fragmentation, Static Firing	1-16
1-15.	A7-38 Walkway, Maintenance, Forward Skirt	1-17
1-16.	A7-39 Clean Room, LH ₂ Tank	1-18
1-17.	A7-40 Air Conditioner, LH ₂ Tank Servicing	1-19
1-18.	A7-41 Plate Assembly, Carrier, Umbilical Disconnect Arm No. 3A	1-20
1-19.	A7-42 Plate Assembly, Carrier, Umbilical Disconnect Arm No. 4	1-21
1-20.	A7-43 Ladder, Access, Aft Hoisting Frame	1-22
1-21.	A7-44 Platform, Forward Stage Access	1-23
1-22.	A7-47 Shield, Heat, Static Firing	1-24
1-23.	A7-48 Indicator No. 2, Piston Position	1-25

Table No.	Title	Page
2-1.	C7-2 Program Set, Automatic Checkout	2-2
2-2.	C7-15 Pulse Checker, EBW	2-3
2-3.	C7-26 Cable Installation, Staging Area	2-4
2-4.	C7-28 Test Set, Electric Cable	2-5
2-5.	C7-35 Cable Installation, Acceptance Stand No. 1	2-6
2-6.	C7-38 Cable Installation, Firing Control Center	2-7
2-7.	C7-40 Cable Installation, Acceptance Stand No. 2	2-8
2-8.	C7-41 Rack, Remote Power Distribution	2-9
2-9.	C7-42 Harness Set, Electrical Vibration Safety Cutoff	2-10
2-10.	C7-43 Harness Set, Electrical, Static Test, Stage	2-11
2-11.	C7-44 Test Set, Ground Equipment	2-12
2-12.	C7-44 Test Set, Ground Equipment, Components	2-13
2-13.	C7-46 Harness Set, Electrical, Stage Checkout	2-14
2-14.	C7-48 Rack, Time Code	2-15
2-15.	C7-51 Monitoring Unit, Flow, Engine Systems	2-16
3-1.	C7-101 Computer, Automatic Checkout	3-2
3-2.	C7-102 Console, Test Conductor	3-3
3-3.	C7-103 Input Set, Program	3-5
3-4.	C7-104 Rack, Data Printout	3-6
3-5.	C7-105 Rack, Auxiliary Memory	3-7
3-6.	C7-106 Rack, Buffer Equipment	3-8
3-7.	C7-106 Rack, Buffer Equipment, Components	3-10
3-8.	C7-107 Rack, Digital Driver Link, Local	3-11
3-9.	C7-107 Rack, Digital Driver Link, Local, Components	3-12
3-10.	C7-108 Rack, Digital Driver Link, Remote	3-13
3-11.	C7-108 Rack, Digital Driver Link, Remote, Components	3-14
3-12.	C7-109 Rack, Computer Isolation	3-15
3-13.	C7-109 Rack, Computer Isolation, Components	3-16
4-1.	C7-201 Rack, Automatic Control	4-2
4-2.	C7-201 Rack, Automatic Control, Components	4-3
4-3.	C7-202 Rack, Manual Control and Display	4-4
4-4.	C7-202 Rack, Manual Control and Display Components	4-5
4-5.	C7-204 Rack, Signal Distribution	4-6
4-6.	C7-204 Rack, Signal Distribution, Components	4-7
4-7.	C7-205 Rack, Special Data	4-8
4-8.	C7-205 Rack, Special Data, Components	4-9
4-9.	C7-208 Rack, Station Control and Display	4-10
4-10.	C7-209 Rack, Control and Display, Local	4-11
4-11.	C7-210 Rack, Stage Substitutes	4-12
4-12.	C7-210 Rack, Stage Substitutes, Components	4-13
4-13.	C7-211 Rack, Scanning	4-14
4-14.	C7-212 Rack, Discrete Display	4-15
4-15.	C7-213 Rack, Relay Interlock	4-16
4-16.	C7-213 Rack, Relay Interlock, Components	4-17

Table No.	Title	Page
4-17.	C7-801 Rack, Static Firing A, Local	4-18
4-18.	C7-802 Rack, Static Firing A, Remote	4-19
4-19.	C7-803 Rack, Static Firing B, Local	4-20
5-1.	C7-307 Rack, Checkout, Command Destruct Receiver	5-2
5-2.	C7-307 Rack, Checkout, Command Destruct Receiver, Components	5-3
6-1.	C7-401 Rack, Automatic Control and Display	6-2
6-2.	C7-401 Rack, Automatic Control and Display, Components	6-3
6-3.	C7-402 Rack, Manual Control and Display	6-4
6-4.	C7-403 Rack, PCM	6-5
6-5.	C7-406 Rack, Computer Adapter	6-6
6-6.	C7-406 Rack, Computer Adapter, Components	6-7
7-1.	C7-510 Rack, Automatic Control and Display	7-2
7-2.	C7-510 Rack, Automatic Control and Display, Components	7-3
7-3.	C7-511 Rack, Digitizing System	7-4
7-4.	C7-512 Rack, Oscilloscope	7-5
7-5.	C7-512 Rack, Oscilloscope, Components	7-6
7-6.	C7-513 Rack, Decommuration	7-7
7-7.	C7-513 Rack, Decommuration, Components	7-8
7-8.	C7-514 Rack, Discriminator	7-9
7-9.	C7-515 Rack, Receiver	7-10
7-10.	C7-515 Rack, Receiver, Components	7-11
7-11.	C7-516 Rack, Tape Recorder	7-12
7-12.	C7-518 Rack, Single Side Band	7-13
7-13.	C7-518 Rack, Single Side Band, Components	7-14
7-14.	C7-519 Rack, PCM	7-15
8-1.	C7-601 Console, Hydraulic Power	8-2
8-2.	C7-601 Console, Hydraulic Power, Components	8-4
8-3.	C7-603 Console Set, Pneumatic Checkout	8-7
8-4.	C7-605 Console Set, Pneumatic Servicing	8-9
8-5.	C7-605 Console Set, Pneumatic Servicing, Components	8-11
9-1.	H7-1 Pallet, S-II Stage	9-2
9-2.	H7-2 Ring, Forward, Stage Support	9-4
9-3.	H7-3 Ring, Aft, Stage Support	9-5
9-4.	H7-4 Truck, Transporter, Forward	9-6
9-5.	H7-5 Truck, Transporter, Aft	9-7
9-6.	H7-8 Dolly, Aft Interstage	9-8
9-7.	H7-9 Cover, Stage Front	9-9
9-8.	H7-10 Cover, Forward Body, Stage	9-10
9-9.	H7-11 Cover, Mid-Body, Stage	9-11
9-10.	H7-12 Cover, Aft Body, Stage	9-12
9-11.	H7-13 Cover, Aft Interstage	9-13
9-12.	H7-14 Cover, Stage Aft	9-14
9-13.	H7-15 Roller Mechanism, Stage Body Covers	9-15
9-14.	H7-16 Spool, Roller Mechanism, Stage Body Covers	9-16

Table No.	Title	Page
9-15.	H7-17 Fixture, Stage Fit-Up	9-17
9-16.	H7-18 Illumination Set, Transport	9-18
9-17.	H7-19 Lock No. 1, Actuator, Engine	9-19
9-18.	H7-20 Simulator, Actuator, Engine	9-20
9-19.	H7-21 Skirt, Static Firing	9-21
9-20.	H7-23 Sling, Stage Erecting	9-22
9-21.	H7-24 Frame, Hoisting, Forward	9-23
9-22.	H7-25 Frame, Hoisting, Aft	9-24
9-23.	H7-27 Sling, Interstage and Static Firing Skirt Segment	9-25
9-24.	H7-28 Sling, Ring Segment, Support	9-26
9-25.	H7-29 Adapter Set, Tag Lines	9-27
9-26.	H7-30 Sling, Interstage and Static Firing Skirt	9-28
9-27.	H7-32 Sling, Ullage Rocket	9-29
9-28.	H7-35 Support Adapter, Ullage Rocket	9-30
9-29.	H7-71 Manipulator, Engine Component	9-31
9-30.	H7-72 Frame, Engine Protective	9-32
9-31.	H7-73 Sling, Engine Protective Frame	9-33
9-32.	H7-76 Sling, Attitude Control, Engine Protective Frame	9-34
9-33.	H7-77 Sling, Segment, Engine Protective Frame	9-35
9-34.	H7-78 Sling, Access Ladder, Aft Hoisting Frame	9-36
9-35.	H7-79 Bracket Set, Stage Guide	9-37
9-36.	H7-81 Fixture, Holding, Forward Hoisting Frame	9-38
9-37.	H7-83 Sling, Transporter Components	9-39
9-38.	H7-86 Spacer, Stage Checkout Dolly	9-40
9-39.	H7-87 Sling, Spacer, Stage Checkout Dolly	9-41
9-40.	H7-89 Lock No. 2, Actuator, Engine	9-42
9-41.	H7-92 Ring, Forward Support, Interstage	9-43
9-42.	H7-93 Ring, Aft Support, Interstage	9-44
9-43.	H7-101 Pallet, Interstage, S-II Stage	9-45
9-44.	H7-104 Truck, Forward, Interstate Transporter	9-46
9-45.	H7-105 Truck, Aft, Interstate Transporter	9-47
10-1.	S7-3 Desiccation System, LH ₂ Tank	10-2
10-2.	S7-4 Desiccation System, LOX Tank	10-3
10-3.	S7-5 Desiccation System, Extended Storage	10-4
10-4.	S7-6 Servicing Unit, Hydraulic Fluid	10-5
10-5.	S7-6 Servicing Unit, Hydraulic Fluid, Components	10-7
10-6.	S7-10 Jumper Unit, Hydraulic System	10-8
10-7.	S7-10 Jumper Unit, Hydraulic System, Components	10-9
10-8.	S7-13 Fluid Distribution System, Staging Area	10-10
10-9.	S7-27 Fluid Distribution System, Acceptance Stand No. 1	10-11
10-10.	S7-33 Fluid Distribution System, Acceptance Stand No. 2	10-12

Table No.	Title	Page
10-11.	S7-34 Air Servicing Unit, Electrical Container	10-13
10-12.	S7-37 Pump Unit, Vacuum, Portable	10-14
10-13.	S7-38 Servicing Unit, Precharge, Hydraulic Assumulator.	10-15
10-14.	S7-40 Servicing Unit, Nitrogen, Purge and Thermal Control	10-16

INTRODUCTION

This publication has been prepared to provide the preliminary inspection requirements, and equipment limitations on all ground support equipment (GSE) required to support the SATURN II (S-II) stage of the SATURN V launch vehicle.

The ground support equipment is designed and manufactured by the Space and Information Systems Division of North American Aviation, Inc., Downey, California, for the National Aeronautics and Space Administration.

In addition to the inspection requirements contained in this publication, operational, replacement, calibration, shelf life, and damage limits are provided to assure that equipment remains in a safe and operational status.

The information contained in this manual reflects the latest valid data available, and equipment requirements concepts in effect on 1 November 1963.

It is the policy of the contractor to reflect only approved equipment designs and configurations in the support documents. Scheduled changes and fast-reaction changes (concurrent with equipment delivery) will be utilized to reflect equipment design and configuration changes subsequent to the preliminary issue of this support manual.

LIST OF MANUALS

The following is a list of SATURN S-II manuals which have been published and distributed by Space and Information Systems Division of North American Aviation, Inc., Downey, California.

SM-S-II-01	General Manual
SM-S-II-02	Transportation Manual
SM-S-II-03	Engine Installation and Removal Manual
SM-S-II-05	Electrical and Ordnance Systems Checkout Manual
SM-S-II-06	Propulsion Systems Checkout Manual
SM-S-II-07	Flight Control System Checkout Manual
SM-S-II-08	Instrumentation System Checkout Manual
SM-S-II-13	Ground Equipment Test Set Maintenance Manual
SM-S-II-17	Servicing Equipment Maintenance Manual
SM-S-II-18	Handling, Auxiliary, and Miscellaneous Checkout Equipment Maintenance Manual
SM-S-II-20	Systems Inspection Manual

SAFETY PRECAUTIONS

GENERAL

The safety precautions contained in this manual have been prepared for the protection of personnel performing inspection tasks on the Saturn S-II GSE. Warnings or cautions used in the manual indicate potential hazards which could be encountered. When warnings and cautions are included in the text, strict observance of the information or procedures contained in them is mandatory. The following examples explain warning or caution notes contained in this manual.

WARNING

The warning note indicates a practice or procedure which, if not observed or followed correctly, could result in personal injury or loss of life.

CAUTION

The caution note indicates a practice or procedure which, if not observed or followed correctly, could result in damage to equipment.

ELECTRICAL SYSTEMS

Direct-current and alternating-current electrical power is utilized in the S-II GSE. The following precautions must be taken by personnel inspecting GSE.

- Open or de-energize all circuits before inspecting electrical components or cabling.
- Place warning signs on controls if inspecting is to be performed in a remote location.
- Before connecting a power source for a functional equipment check, ensure that facility circuit breakers are off, all switches on the equipment are in the off or de-energized position, and equipment is properly grounded.
- Do not leave electrical controls unattended when a piece of equipment is energized.

PNEUMATIC SYSTEMS

High-pressure gaseous helium, gaseous nitrogen, and gaseous hydrogen are controlled by various pieces of GSE equipment. The following precautions must be observed by personnel inspecting GSE pneumatic equipment.

- Depressurize and purge all pneumatic equipment before inspecting pneumatic components and plumbing.
- Place warning signs on controls if inspection is to be performed in a remote location.
- During functional checks of pneumatic equipment, apply pressure slowly and check for audible evidence of leakage.
- Do not attempt to tighten a leaking fitting or component while it is pressurized.
- Adequate ventilation must be available before conducting any pneumatic equipment functional checks.

HYDRAULIC SYSTEMS

High-pressure hydraulic fluid is utilized in the S-II hydraulic servicing equipment. The following precautions must be observed by personnel inspecting hydraulic equipment.

- Depressurize all hydraulic equipment before inspecting hydraulic components and plumbing.
- Place warning signs on controls if inspection is to be performed in a remote location.
- During functional checks of hydraulic equipment, apply hydraulic pressure slowly.
- Do not attempt to tighten leaking hydraulic fittings or components while they are pressurized.

SECTION I
AUXILIARY EQUIPMENT

1-1. GENERAL.

1-2. This section contains tables listing the inspection requirements and component limitations necessary to maintain the auxiliary equipment which supports the Saturn S-II stage.

1-3. The first table on each piece of equipment lists equipment breakdown, type of inspection, and inspection requirements. The inspection requirements prescribed by this manual are stated in a manner which establishes what conditions are to be sought. It does not contain instructions for repair, adjustment, or other means of rectifying defective conditions.

1-4. The second table lists the equipment components and the operating, replacement, calibration, shelf life, and damage limitations. This table will be included only for the pieces of equipment to which it applies.

1-5. All equipment is listed in numerical model number sequence to assist in easier location of any particular piece of equipment. The periods designated in this manual for accomplishment of the various inspection requirements are the maximum time periods allowed. When abnormal conditions dictate, the frequency and/or scope of inspection should be increased as required.

Table 1-1. A7-3 Instrumentation Unit, Transport

Equipment Nomenclature	Type of Inspection						Inspection Requirements
	Receiving	Prior to Use	Periodic	Special	Shipping	Storage	
A7-3 Instrumentation Unit, Transport	X						Visually inspect for physical damage from shipping or storage
	X						Calibrate and adjust in accordance with SM-S-II-18, Handling, Auxiliary, and Miscellaneous Checkout Equipment Maintenance Manual
	X						Functional checkout per instructions in SM-S-II-18, Handling, Auxiliary and Miscellaneous Checkout Equipment Maintenance Manual
		X					Visual inspection for obvious damage to structure or components
				X			Functional checkout of complete unit when any component is replaced
		X					All electrical receptacles not in use properly capped and protected against contamination
					X	X	Prepare for shipping or storage in accordance with SM-S-II-18, Handling, Auxiliary, and Miscellaneous Checkout Equipment Maintenance Manual

Table 1-2. A7-4 Leak Detector, Helium

Equipment Nomenclature	Type of Inspection						Inspection Requirements
	Receiving	Daily	Periodic	Special	Shipping	Storage	
A7-4 Leak Detector, Helium	X						Physical damage from shipping or storage
	X						Calibrate and adjust in accordance with SM-S-II-18, Handling, Auxiliary, and Miscellaneous Checkout Equipment Maintenance Manual
	X						Functional checkout in accordance with instructions in SM-S-II-18, Handling, Auxiliary, and Miscellaneous Checkout Equipment Maintenance Manual
		X					Visual inspection for obvious damage to structure or components
				X			Functional checkout of complete unit when any component is replaced
			X				All electrical receptacles and sampling probe properly capped and protected against contaminants when not in use
					X	X	Prepare for shipment or storage in accordance with SM-S-II-18, Handling, Auxiliary, and Miscellaneous Checkout Equipment Maintenance Manual

Table 1-3. A7-6 Cover Set, Electrical Connector

Equipment Nomenclature	Type of Inspection						Inspection Requirements
	Receiving	Prior to Use	Periodic	Special	Shipping	Storage	
A7-6 Cover Set, Electrical Connector	X	X			X	X	<p>Physical damage from shipping or storage</p> <p>Visual inspection for cleanliness and obvious damage</p> <p>Prepare for shipping or storage in accordance with SM-S-II-18 Handling, Auxiliary, and Miscellaneous Checkout Equipment Maintenance Manual</p>

Table 1-4. A7-7 Cover Set, Fluid Connector

Equipment Nomenclature	Type of Inspection						Inspection Requirements
	Receiving	Prior to Use	Periodic	Special	Shipping	Storage	
A7-7 Cover Set, Fluid Connector	X	X			X	X	<p>Physical damage from shipping or storage</p> <p>Visual inspection for cleanliness and obvious damage</p> <p>Prepare for shipping or storage in accordance with SM-S-II-18 Handling, Auxiliary, and Miscellaneous Checkout Equipment Maintenance Manual</p>

Table 1-5. A7-8 Streamer Set, Warning

Equipment Nomenclature	Type of Inspection						Inspection Requirements
	Receiving	Prior to Use	Periodic	Special	Shipping	Storage	
A7-8 Streamer Set, Warning	X	X			X	X	<p>Physical damage from shipping or storage</p> <p>Visual inspection for cleanliness and obvious damage</p> <p>Prepare for shipping or storage in accordance with SM-S-II-18 Handling, Auxiliary, and Miscellaneous Checkout Equipment Maintenance Manual</p>

Table 1-6. A7-12 Platform, Engine Compartment, Vertical

Equipment Nomenclature	Type of Inspection						Inspection Requirements
	Receiving	Prior to Use	Periodic	Special	Shipping	Storage	
A7-12 Platform, Engine Compartment, Vertical	X						Inspect for evidence of physical damage due to shipping or storage
	X						Prepare for use in accordance with SM-S-II-18 Handling, Auxiliary, and Miscellaneous Checkout Equipment Maintenance Manual
	X						Operational checkout per SM-S-II-18, Handling, Auxiliary, and Miscellaneous Checkout Equipment Maintenance Manual
		X					Visual inspection for 1. Capability of air retention 2. Attach points free from cracked or loose fittings 3. All removable components secure and free from damage
				X			Operational checkout of complete unit when any component is replaced
		X					Check operating air pressure minimum limits every 4 days in accordance with SM-S-II-18 Handling, Auxiliary, and Miscellaneous Checkout Equipment Maintenance Manual

Table 1-6. A7-12 Platform, Engine Compartment, Vertical (Cont)

Equipment Nomenclature	Type of Inspection						Inspection Requirements
	Receiving	Prior to Use	Periodic	Special	Shipping	Storage	
A7-12 Platform, Engine Compartment, Vertical					X	X	Prepare for shipping or storage in accordance with instructions in SM-S-II-18, Handling, Auxiliary, and Miscellaneous Checkout Equipment Maintenance Manual

Table 1-7. A7-12 Platform, Engine Compartment, Vertical, Components

Component Nomenclature	Limits					Inspection Requirements
	Operational	Replacement	Calibration	Shelf Life	Damage	
A7-12 Platform, Engine Compartment, Vertical	X					Leakage shall permit a minimum of 4 days without requiring pressure topping

Table 1-8. A7-14 Engine Compartment Light Set

Equipment Nomenclature	Type of Inspection						Inspection Requirements
	Receiving	Daily	Periodic	Special	Shipping	Storage	
A7-14 Engine Compartment Light Set	X						Visually inspect for physical damage from shipping or storage
	X						Functional checkout in accordance with instructions in SM-S-II-18 Handling, Auxiliary, and Miscellaneous Checkout Equipment Maintenance Manual
				X			Functional checkout when any component is replaced
					X	X	Prepare for shipment or storage in accordance with SM-S-II-18 Handling, Auxiliary, and Miscellaneous Checkout Equipment Maintenance Manual

Table 1-9. A7-15 Alignment Set, Thrust

Equipment Nomenclature	Type of Inspection						Inspection Requirements
	Receiving	Daily	Periodic	Special	Shipping	Storage	
A7-15 Alignment Set, Thrust	X						Visually inspect for evidence of physical damage due to shipping or storage
	X						Calibrate and adjust in accordance with SM-S-II-18 Handling, Auxiliary, and Miscellaneous Checkout Equipment Maintenance Manual
		X					Visually inspect for 1. Obvious physical damage 2. Freedom from contaminants
				X			Calibrate and adjust in accordance with SM-S-II-18 Handling, Auxiliary, and Miscellaneous Checkout Equipment Maintenance Manual when my component is replaced
			X				All electrical and pneumatic receptacles not in use properly capped and protected against contaminants
					X	X	Prepare for shipping or storage in accordance with instructions in SM-S-II-18 Handling, Auxiliary, and Miscellaneous Checkout Equipment Maintenance Manual

Table 1-10. A7-17 Fixture, Alignment, Auxiliary Engine

Equipment Nomenclature	Type of Inspection						Inspection Requirements
	Receiving	Prior to Use	Periodic	Special	Shipping	Storage	
A7-17 Fixture, Alignment, Auxiliary Engine	X						Visually inspect for physical damage from shipping or storage
	X						Calibrate and adjust in accordance with SM-S-II-18 Handling, Auxiliary, and Miscellaneous Checkout Equipment Maintenance Manual
		X					Visual inspection for 1. Obvious damage 2. Cleanliness
					X	X	Prepare for shipping or storage in accordance with SM-S-II-18 Handling, Auxiliary, and Miscellaneous Checkout Equipment Maintenance Manual

Table 1-11 A7-34 Indicator No. 1, Piston Position

Equipment Nomenclature	Type of Inspection						Inspection Requirements
	Receiving	Prior to Use	Periodic	Special	Shipping	Storage	
A7-34 Indicator No. 1, Piston Position	X						Visually inspect for evidence of physical damage due to shipping or storage
	X						Calibrate and adjust in accordance with SM-S-II-18 Handling, Auxiliary, and Miscellaneous Checkout Equipment Maintenance Manual
		X					Visually inspect for 1. Evidence of physical damage 2. Cleanliness and freedom from contaminants 3. All removable equipment secure
					X	X	Prepare for shipping or storage in accordance with SM-S-II-18 Handling, Auxiliary, and Miscellaneous Checkout Equipment Maintenance Manual

Table 1-12. A7-35 Servicing Mechanism, LH₂ Tank

Equipment Nomenclature	Type of Inspection						Inspection Requirements
	Receiving	Prior to Use	Periodic	Special	Shipping	Storage	
A7-35 Servicing Mechanism, LH ₂ Tank	X						Visually inspect for evidence of physical damage due to shipping or storage
	X						Calibrate and adjust in accordance with SM-S-II-18 Handling, Auxiliary, and Miscellaneous Checkout, Equipment Maintenance Manual
	X						Functional checkout in accordance with SM-S-II-18 Handling, Auxiliary, and Miscellaneous Checkout Equipment Maintenance Manual
		X					Visually inspect for evidence of physical damage
				X			Functional checkout of complete unit when any component is replaced
		X				Visually inspect equipment and surrounding area for cleanliness and freedom from contaminants	

Table 1-13. A7-36 Indicator, Pump Shaft Seal Visual Leakage

Equipment Nomenclature	Type of Inspection						Inspection Requirements
	Receiving	Prior to Use	Periodic	Special	Shipping	Storage	
A7-36 Indicator, Pump Shaft Seal Visual Leakage	X						Visually inspect for physical damage from shipping or storage
		X					Component free from damage and contamination
		X					Prepare for use in accordance with SM-S-II-18 Handling, Auxiliary, and Miscellaneous Checkout Equipment Maintenance Manual
					X	X	Prepare for shipping or storage in accordance with SM-S-II-18 Handling, Auxiliary, and Miscellaneous Checkout Equipment Maintenance Manual

Table 1-14. A7-37 Shield, Fragmentation, Static Firing

Equipment Nomenclature	Type of Inspection						Inspection Requirements
	Receiving	Prior to Use	Periodic	Special	Shipping	Storage	
A7-35 Shield, Fragmentation, Static Firing	X						Visually inspect for evidence of physical damage due to shipping or storage
	X						Prepare for use in accordance with SM-S-II-18 Handling, Auxiliary, and Miscellaneous Checkout Equipment Maintenance Manual
		X					Visually inspect 1. Attach points for cracked or loose fittings 2. All removable equipment is secure and free from damage
					X	X	Prepare for shipping or storage in accordance with instructions in SM-S-II-18 Handling, Auxiliary, and Miscellaneous Checkout Equipment Maintenance Manual

Equipment Nomenclature	Type of Inspection						Inspection Requirements
	Receiving	Prior to Use	Periodic	Special	Shipping	Storage	
A7-38 Walkway, Maintenance, Forward Skirt	X						Visually inspect for evidence of physical damage due to shipping or storage
		X					Prepare for use in accordance with SM-S-II-18 Handling, Auxiliary, and Miscellaneous Checkout Equipment Maintenance Manual
		X					Visually inspect 1. Attach points for cracked or loose fittings 2. All removable components secure and free from damage
					X	X	Prepare for shipping or storage in accordance with instructions in SM-S-II-18 Handling, Auxiliary, and Miscellaneous Checkout Equipment Maintenance Manual

Table 1-16. A7-39 Clean Room, LH₂ Tank

Equipment Nomenclature	Type of Inspection						Inspection Requirements
	Receiving	Prior to Use	Periodic	Special	Shipping	Storage	
A7-39 Clean Room, LH ₂ Tank	X						Visually inspect for evidence of physical damage or storage
	X						Adjust in accordance with SM-S-II-18 Handling, Auxiliary, and Miscellaneous Checkout Equipment Maintenance Manual
	X	X					Functional checkout in accordance with SM-S-II-18 Handling, Auxiliary, and Miscellaneous Checkout Equipment Maintenance Manual
			X				Visually inspect for evidence of physical damage
			X				Visually inspect equipment and surrounding area for cleanliness and freedom from contaminants
					X	X	Prepare for shipping or storage in accordance with SM-S-II-18 Handling, Auxiliary, and Miscellaneous Checkout Equipment Maintenance Manual

Table 1-17. A7-40 Air Conditioner, LH₂ Tank Servicing

Equipment Nomenclature	Type of Inspection						Inspection Requirements
	Receiving	Daily	Periodic	Special	Shipping	Storage	
A7-40 Air Conditioner, LH ₂ Tank Servicing	X						Physical damage from shipping or storage
	X						Calibrate and adjust in accordance with SM-S-II-18 Handling, Auxiliary, and Miscellaneous Checkout Equipment Maintenance Manual
	X						Functional checkout in accordance with SM-S-II-18 Handling, Auxiliary, and Miscellaneous Checkout Equipment Maintenance Manual
		X					Visual inspection for obvious damage to structure or components
				X			Functional checkout of complete unit when any component is replaced
				X	X		Prepare for shipping or storage per instructions in accordance with SM-S-II-18 Handling, Auxiliary, and Miscellaneous Checkout Equipment Maintenance Manual

Table 1-18. A7-41 Plate Assembly, Carrier, Umbilical Disconnect Arm No. 3A

Equipment Nomenclature	Type of Inspection						Inspection Requirements
	Receiving	Daily	Periodic	Special	Shipping	Storage	
A7-41 Plate Assembly, Carrier, Umbilical Disconnect Arm No. 3A	X						Visually inspect for evidence of physical damage due to shipping or storage
	X						Functional checkout in accordance with SM-S-II-18 Handling, Auxiliary, and Miscellaneous Checkout Equipment Maintenance Manual
		X					Visually inspect for evidence of physical damage
		X					Visually inspect equipment and surrounding area for cleanliness and freedom from contaminants
					X	X	Prepare for shipping or storage in accordance with SM-S-II-18 Handling, Auxiliary, and Miscellaneous Checkout Equipment Maintenance Manual

Table 1-19. A7-42 Plate Assembly, Carrier, Umbilical Disconnect Arm No. 4

Equipment Nomenclature	Type of Inspection						Inspection Requirements
	Receiving	Daily	Periodic	Special	Shipping	Storage	
A7-42 Plate Assembly, Carrier, Umbilical Disconnect Arm No. 4	X						Visually inspect for evidence of physical damage due to shipping or storage
	X						Functional checkout in accordance with SM-S-II-18 Handling, Auxiliary, and Miscellaneous Checkout Equipment Maintenance Manual
		X					Visually inspect for evidence of physical damage
		X					Visually inspect equipment and surrounding area for cleanliness and freedom from contaminants
					X	X	Prepare for shipping or storage in accordance with SM-S-II-18 Handling, Auxiliary, and Miscellaneous Checkout Equipment Maintenance Manual

Table 1-20. A7-43 Ladder, Access, Aft Hoisting Frame

Equipment Nomenclature	Type of Inspection						Inspection Requirements
	Receiving	Prior to Use	Periodic	Special	Shipping	Storage	
A7-43 Ladder, Access Aft Hoisting Frame	X						Visually inspect for evidence of physical damage due to shipping or storage.
		X					Prepare for use in accordance with SM-S-II-18 Handling, Auxiliary, and Miscellaneous Checkout Equipment Maintenance Manual
		X					Visually inspect <ol style="list-style-type: none"> 1. Attach points for cracked or loose fittings 2. All removable components secure and free from damage
					X	X	Prepare for shipping or storage in accordance with instructions in SM-S-II-18 Handling, Auxiliary, and Miscellaneous Checkout Equipment Maintenance Manual

Table 1-21. A7-44 Platform, Forward Stage Access

Equipment Nomenclature	Type of Inspection						Inspection Requirements
	Receiving	Prior to Use	Periodic	Special	Shipping	Storage	
A7-44 Platform, Forward Stage Access	X						Visually inspect for evidence of physical damage due to shipping or storage
		X					Prepare for use in accordance with SM-S-II-18 Handling, Auxiliary, and Miscellaneous Checkout Equipment Maintenance Manual
		X					Visually inspect 1. Attach points for cracked or loose fittings 2. All removable components secure and free from damage
					X	X	Prepare for shipping or storage in accordance with instructions in SM-S-II-18 Handling, Auxiliary, and Miscellaneous Checkout Equipment Maintenance Manual

Table 1-22. A7-47 Shield, Heat, Static Firing

Equipment Nomenclature	Type of Inspection						Inspection Requirements
	Receiving	Prior to Use	Periodic	Special	Shipping	Storage	
A7-47 Shield, Heat, Static Firing	X						Visually inspect for evidence of physical damage due to shipping or storage
	X						Prepare for use in accordance with SM-S-II-18 Handling, Auxiliary, and Miscellaneous Checkout Equipment Maintenance Manual
		X					Visually inspect 1. Attach points for cracked or loose fittings 2. All removable equipment secure and free from damage
					X	X	Prepare for shipping or storage in accordance with instructions in SM-S-II-18 Handling, Auxiliary, and Miscellaneous Checkout Equipment Maintenance Manual

Table 1-23. A7-48 Indicator No. 2, Piston Position

Equipment Nomenclature	Type of Inspection						Inspection Requirements
	Receiving	Prior to Use	Periodic	Special	Shipping	Storage	
A7-48 Indicator No. 2, Piston Position	X						Visually inspect for evidence of physical damage due to shipping or storage
	X						Calibrate and adjust in accordance with SM-S-II-18 Handling, Auxiliary, and Miscellaneous Checkout Equipment Maintenance Manual
		X					Visually inspect for 1. Evidence of physical damage 2. Cleanliness and freedom from contaminants 3. All removable equipment secure
				X	X		Prepare for shipping or storage in accordance with SM-S-II-18 Handling, Auxiliary, and Miscellaneous Checkout Equipment Maintenance Manual



SECTION II

CHECKOUT AND CONTROL EQUIPMENT

2-1. GENERAL.

2-2. This section contains tables listing the inspection requirements and component limitations necessary to maintain the checkout and control equipment which supports the Saturn S-II stage.

2-3. The first table on each piece of equipment lists equipment breakdown, type of inspection, and inspection requirements. The inspection requirements prescribed by this manual are stated in a manner which establishes what conditions are to be sought. It does not contain instructions for repair, adjustment, or other means of rectifying defective conditions.

2-4. The second table lists the equipment components and the operating, replacement, calibration, shelf life, and damage limitations. This table will be included only for the pieces of equipment to which it applies.

2-5. All equipment is listed in numerical model number sequence to assist in easier location of any particular piece of equipment. The periods designated in this manual for accomplishment of the various inspection requirements are the maximum time periods allowed. When abnormal conditions dictate, the frequency and/or scope of inspection should be increased as required.

Table 2-1. C7-2 Program Set, Automatic Checkout

Equipment Nomenclature	Type of Inspection						Inspection Requirements
	Receiving	Prior to Use	Periodic	Special	Shipping	Storage	
C7-2 Program Set, Automatic Checkout	X	X	X				<p>Visually inspect for physical damage from shipping or storage</p> <p>Visual inspection for obvious damage and cleanliness</p>

Table 2-2. C7-15 Pulse Checker, EBW

Equipment Nomenclature	Type of Inspection						Inspection Requirements
	Receiving	Prior to Use	Periodic	Special	Shipping	Storage	
C7-15 Pulse Checker, EBW	X						Visually inspect for evidence of physical damage due to shipping or storage
	X	X					Functional checkout in accordance with instructions in SM-S-II-18 Handling, Auxiliary, and Miscellaneous Checkout Equipment Maintenance Manual
		X					Visually inspect for 1. Evidence of physical damage 2. Cleanliness and freedom from contaminants 3. Exposed electrical receptacles not in use properly capped and protected against contaminants
				X			Functional checkout of associated circuitry when any component is replaced
					X	X	Package for shipment or storage in accordance with SM-S-II-18 Handling, Auxiliary, and Miscellaneous Checkout Equipment Maintenance Manual

Table 2-3. C7-26 Cable Installation, Staging Area

Equipment Nomenclature	Type of Inspection						Inspection Requirements
	Receiving	Prior to Use	Periodic	Special	Shipping	Storage	
C7-26 Cable Installation, Staging Area	X						Visually inspect for evidence of physical damage due to shipping or storage
	X						Operational checkout per instructions in SM-S-11-18 Handling, Auxiliary, and Miscellaneous Checkout Equipment Maintenance Manual
		X					Visually inspect for <ol style="list-style-type: none"> 1. Evidence of physical damage 2. Electrical receptacles not in use properly capped and protected against contamination 3. Cleanliness and freedom from contaminants
				X			Operational checkout of associated circuitry when any component is replaced
					X	X	Package for shipment or storage in accordance with SM-S-11-18 Handling, Auxiliary, and Miscellaneous Checkout Equipment Maintenance Manual

Table 2-4. C7-28 Test Set, Electric Cable

Equipment Nomenclature	Type of Inspection						Inspection Requirements
	Receiving	Prior to Use	Periodic	Special	Shipping	Storage	
C7-28 Test Set, Electric Cable	X						Physical damage from shipping or storage
	X		X				Cable Analyzer self check per instructions in SM-S-II-18 Handling, Auxiliary and Miscellaneous Checkout Equipment Maintenance Manual
		X					Visual inspection for 1. Cleanliness and obvious damage 2. Receptacles not in use properly capped and protected against contamination
				X			Functional checkout of cable analyzer when any component is replaced
					X	X	Package for shipment or storage in accordance with SM-S-II-18 Handling, Auxiliary, and Miscellaneous Checkout Equipment Maintenance Manual

Table 2-5. C7-35 Cable Installation, Acceptance Stand No. 1

Equipment Nomenclature	Type of Inspection						Inspection Requirements
	Receiving	Prior to Use	Periodic	Special	Shipping	Storage	
C7-35 Cable Installation, Acceptance Stand No. 1	X						Visually inspect for evidence of physical damage due to shipping or storage
	X						Operational checkout per instructions in SM-S-II-18 Handling, Auxiliary, and Miscellaneous Checkout Equipment Maintenance Manual
		X					Visually inspect for 1. Evidence of physical damage 2. Electrical receptacles not in use properly capped and protected against contamination 3. Cleanliness and freedom from contaminants
				X			Operational checkout of associated circuitry when any component is replaced
					X	X	Package for shipment or storage in accordance with SM-S-II-18 Handling, Auxiliary, and Miscellaneous Checkout Equipment Maintenance Manual

Table 2-6. C7-38 Cable Installation, Firing Control Center

Equipment Nomenclature	Type of Inspection						Inspection Requirements
	Receiving	Prior to Use	Periodic	Special	Shipping	Storage	
C7-38 Cable Installation, Firing Control Center	X						Visually inspect for evidence of physical damage due to shipping or storage
	X						Operational checkout per instructions in SM-S-II-18 Handling, Auxiliary, and Miscellaneous Checkout Equipment Maintenance Manual
		X					Visually inspect for 1. Evidence of physical damage 2. Electrical receptacles not in use properly capped and protected against contamination 3. Cleanliness and freedom from contaminants
				X			Operational checkout of associated circuitry when any component is replaced
				X	X		Package for shipment or storage in accordance with SM-S-II-18 Handling, Auxiliary, and Miscellaneous Checkout Equipment Maintenance Manual

Table 2-7. C7-40 Cable Installation, Acceptance Stand No. 2

Equipment Nomenclature	Type of Inspection						Inspection Requirements
	Receiving	Prior to Use	Periodic	Special	Shipping	Storage	
C7-40 Cable Installation, Acceptance Stand No. 2	X						Visually inspect for evidence of physical damage due to shipping or storage
	X						Operational checkout per instructions in SM-S-II-18 Handling, Auxiliary, and Miscellaneous Checkout Equipment Maintenance Manual
		X					Visually inspect for 1. Evidence of physical damage 2. Electrical receptacles not in use properly capped and protected against contamination 3. Cleanliness and freedom from contaminants
				X			Operational checkout of associated circuitry when any component is replaced
					X	X	Package for shipment or storage in accordance with SM-S-II-18 Handling, Auxiliary, and Miscellaneous Checkout Equipment Maintenance Manual

Table 2-8. C7-41 Rack, Remote Power Distribution

Equipment Nomenclature	Type of Inspection						Inspection Requirements
	Receiving	Daily	Periodic	Special	Shipping	Storage	
C7-41 Rack, Remote Power Distribution	X						Visually inspect for evidence of physical damage due to shipping or storage
	X						Functional checkout in accordance with instructions in SM-S-II-18 Handling, Auxiliary, and Miscellaneous Checkout Equipment Maintenance Manual
		X					Visually inspect for 1. Evidence of physical damage 2. Cleanliness and freedom from contaminants 3. All electrical receptacles not in use properly capped and protected against contaminants
				X			Functional checkout of associated circuitry when any component is replaced
				X	X		Package for shipment or storage in accordance with SM-S-II-18 Handling, Auxiliary, and Miscellaneous Checkout Equipment Maintenance Manual

Table 2-9. C7-42 Harness Set, Electrical Vibration Safety Cutoff

Equipment Nomenclature	Type of Inspection						Inspection Requirements
	Receiving	Daily	Periodic	Special	Shipping	Storage	
C7-42 Harness Set, Electrical Vibration Safety Cutoff	X						Visually inspect for evidence of physical damage due to shipping or storage
	X						Operational checkout per instructions in SM-S-II-18 Handling, Auxiliary, and Miscellaneous Checkout Equipment Maintenance Manual
		X					Visually inspect for 1. Evidence of physical damage 2. Electrical receptacles not in use properly capped and protected against contamination 3. Cleanliness and freedom from contaminants
				X			Operational checkout of associated circuitry when any component is replaced
				X	X		Package for shipment or storage in accordance with SM-S-II-18 Handling, Auxiliary, and Miscellaneous Checkout Equipment Maintenance Manual

Table 2-10. C7-43 Harness Set, Electrical, Static Test, Stage

Equipment Nomenclature	Type of Inspection						Inspection Requirements
	Receiving	Daily	Periodic	Special	Shipping	Storage	
C7-43 Harness Set, Electrical, Static Test, Stage	X						Visually inspect for evidence of physical damage due to shipping or storage
	X						Operational checkout per instructions in SM-S-II-18 Handling, Auxiliary, and Miscellaneous Checkout Equipment Maintenance Manual
		X					Visually inspect for 1. Evidence of physical damage 2. Electrical receptacles not in use properly capped and protected against contamination 3. Cleanliness and freedom from contaminants
				X			Operational checkout of associated circuitry when any component is replaced
					X	X	Package for shipment or storage in accordance with SM-S-II-18 Handling, Auxiliary, and Miscellaneous Checkout Equipment Maintenance Manual

Table 2-11. C7-44 Test Set, Ground Equipment

Equipment Nomenclature	Type of Inspection						Inspection Requirements
	Receiving	Daily	Periodic	Special	Shipping	Storage	
C7-44 Test Set, Ground Equipment	X						Visually inspect for evidence of physical damage from shipping or storage
	X						Operational checkout in accordance with instructions in SM-S-II-13 Ground Equipment Test Set Maintenance Manual
		X					Visual inspection for 1. Cleanliness and obvious damage 2. All electrical receptacles not in use properly capped and protected against contamination
				X			Operational checkout of associated circuitry when any component is replaced
					X	X	Package for shipment or storage in accordance with MSFC Drawing 10509302
					X	X	Mark for shipment or storage in accordance with MIL-STD-129

Table 2-12. C7-44 Test Set, Ground Equipment, Components

Component Nomenclature	Limits					Inspection Requirements
	Operating	Replacement	Calibration	Shelf Life	Damage	
POWER CONTROL PANEL						
28 VDC Meter 100-09504			X			Calibration period, 13 weeks
120 VAC Meter 100-08392			X			Calibration period, 13 weeks
Rack Operating Time Meter 620			X			Calibration period, 13 weeks
TEST POINT PANEL						
D. C. Meter 100-09504			X			Calibration period, 13 weeks

Table 2-13. C7-46 Harness Set, Electrical Stage Checkout

Equipment Nomenclature	Type of Inspection						Inspection Requirements
	Receiving	Prior to Use	Periodic	Special	Shipping	Storage	
C7-46 Harness Set, Electrical Stage Checkout	X						Visually inspect for evidence of physical damage due to shipping or storage
	X						Operational checkout per instructions in SM-S-II-18 Handling, Auxiliary, and Miscellaneous Checkout Equipment Maintenance Manual
		X					Visually inspect for 1. Evidence of physical damage 2. Electrical receptacles not in use properly capped and protected against contamination 3. Cleanliness and freedom from contaminants
				X			Operational checkout of associated circuitry when any components is replaced
				X	X		Package for shipment or storage in accordance with SM-S-II-18 Handling, Auxiliary, and Miscellaneous Checkout Equipment Maintenance Manual

Table 2-14. C7-48 Rack, Time Code

Equipment Nomenclature	Type of Inspection						Inspection Requirements
	Receiving	Daily	Periodic	Special	Shipping	Storage	
C7-48 Rack, Time Code	X						Visually inspect for evidence of physical damage due to shipping or storage
	X						Calibrate and adjust in accordance with SM-S-II-15 Telemeter Checkout Station and Time Code Rack Maintenance Manual
	X						Functional Checkout in accordance with instructions in SM-S-II-15 Telemeter Checkout Station and Time Code Rack Maintenance Manual
		X					Visually inspect for 1. Evidence of physical damage 2. Equipment and surrounding area for cleanliness and freedom from contaminants
				X			Functional checkout of associated function when any component is replaced
				X	X		Package for shipment or storage in accordance with MSFC Drawing 10509302

Table 2-15. C7-51 Monitoring Unit, Flow, Engine Systems

Equipment Nomenclature	Type of Inspection						Inspection Requirements
	Receiving	Prior to Use	Periodic	Special	Shipping	Storage	
C7-51 Monitoring Unit, Flow, Engine Systems	X						Visually inspect for evidence of physical damage due to shipping or storage
	X						Calibrate and adjust in accordance with SM-S-II-18 Handling, Auxiliary, and Miscellaneous Checkout Equipment Maintenance Manual
	X						Functional checkout in accordance with instructions in SM-S-II-18 Handling, Auxiliary, and Miscellaneous Checkout Equipment Maintenance Manual
		X					Visually inspect for 1. Evidence of physical damage 2. Equipment and surrounding area for cleanliness and freedom from contaminants
				X			Functional checkout of complete unit when any component is replaced
					X	X	Package for shipment or storage in accordance with MSFC Drawing 10509302

SECTION III
COMPUTER COMPLEX

3-1. GENERAL.

3-2. This section contains tables listing the inspection requirements and component limitations necessary to maintain the computer complex which supports the Saturn S-II stage.

3-3. The first table on each piece of equipment lists equipment breakdown, type of inspection, and inspection requirements. The inspection requirements prescribed by this manual are stated in a manner which establishes what conditions are to be sought. It does not contain instructions for repair, adjustment, or other means of rectifying defective conditions.

3-4. The second table lists the equipment components and the operating, replacement, calibration, shelf life, and damage limitations. This table will be included only for the pieces of equipment to which it applies.

3-5. All equipment is listed numerical model number sequence to assist in easier location of any particular piece of equipment. The periods designated in this manual for accomplishment of the various inspection requirements are the maximum time periods allowed. When abnormal conditions dictate, the frequency and/or scope of inspection should be increased as required.

Table 3-1. C7-101 Computer, Automatic Checkout

Equipment Nomenclature	Type of Inspection						Inspection Requirements
	Receiving	Daily	Periodic	Special	Shipping	Storage	
C7-101 Computer, Automatic Checkout	X						Visually inspect for evidence of physical damage due to shipping or storage
NOTE	X						Calibrate and adjust in accordance with SM-S-II-19 Computer Complex Maintenance Manual
This piece of equipment is a special end item which has supplier warranty and maintenance contract responsibility. Malfunction corrective action is covered by supplier and should be so noted.	X						Functional checkout per instructions in SM-S-II-19 Computer Complex Maintenance Manual
		X					Visually inspect for 1. Evidence of physical damage 2. Equipment and surrounding area for cleanliness and freedom from contaminants 3. All electrical receptacles not in use properly capped and protected against contamination
				X			Functional checkout of associated function when any component is replaced

Table 3-2. C7-102 Console, Test Conductor

Equipment Nomenclature	Type of Inspection						Inspection Requirements
	Receiving	Daily	Periodic	Special	Shipping	Storage	
C7-102 Console, Test Conductor	X						Visually inspect for evidence of physical damage due to shipping or storage
	X						Calibrate and adjust in accordance with SM-S-II-19 Computer Complex Maintenance Manual
	X						Functional checkout per instructions in SM-S-II-19 Computer Complex Maintenance Manual
		X					Visually inspect for 1. Evidence of physical damage 2. Equipment and surrounding area for cleanliness and freedom from contaminants 3. All electrical receptacles not in use properly capped and protected against contamination
			X				Functional checkout of associated function when any component is replaced

Table 3-2 . C7-102 Console, Test Conductor (Cont)

Equipment Nomenclature	Type of inspection						Inspection Requirements
	Receiving	Daily	Periodic	Special	Shipping	Storage	
C7-102 Console, Test Conductor					X	X	Package for shipment or storage in accordance with MSFC Draw- ing 10509302
					X	X	Mark for shipment or storage in accordance with Specification MIL-STD-129

Table 3-3. C7-103 Input Set, Program

Equipment Nomenclature	Type of Inspection						Inspection Requirements
	Receiving	Daily	Periodic	Special	Shipping	Storage	
C7-103 Input Set, Program	X						Visually inspect for evidence of physical damage due to shipping or storage
NOTE							
This piece of equipment is a special end item which has supplier warranty and maintenance contract responsibility. Malfunction corrective action is covered by supplier and should be so noted.	X						Calibrate and adjust in accordance with SM-S-II-19 Computer Complex Maintenance Manual
	X						Functional checkout per instructions in SM-S-II-19 Computer Complex Maintenance Manual
		X					Visually inspect for 1. Evidence of physical damage 2. Equipment and surrounding area for cleanliness and freedom from contaminants 3. All electrical receptacles not in use properly capped and protected against contamination
				X			Functional checkout of the associated function when any component is replaced

Table 3-4. C7-104 Rack, Data Printout

Equipment Nomenclature	Type of Inspection						Inspection Requirements
	Receiving	Daily	Periodic	Special	Shipping	Storage	
C7-104 Rack, Data Printout	X						Visually inspect for evidence of physical damage due to shipping or storage
NOTE	X						Calibrate and adjust in accordance with SM-S-II-19 Computer Complex Maintenance Manual
This piece of equipment is a special end item which has supplier warranty and maintenance contract responsibility. Malfunction corrective action is covered by supplier and should be so noted.	X						Functional checkout per instructions in SM-S-II-19 Computer Complex Maintenance Manual
		X					Visually inspect for 1. Evidence of physical damage 2. Equipment and surrounding area for cleanliness and freedom from contaminants 3. All electrical receptacles not in use properly capped and protected against contamination
				X			Functional checkout of associated circuitry when any component is replaced

Table 3-6 . C7-106 Rack, Buffer Equipment (Cont)

Equipment Nomenclature	Type of Inspection						Inspection Requirements
	Receiving	Daily	Periodic	Special	Shipping	Storage	
C7-106 Rack, Buffer Equipment					X	X	Package for shipment or storage in accordance with MSFC Draw- ing 10509302
					X	X	Mark for shipment or storage in accordance with Specification MIL-STD-129

Table 3-7. C7-106 Rack, Buffer Equipment, Components

Component Nomenclature	Limits					Inspection Requirements
	Operating	Replacement	Calibration	Shelf Life	Damage	
<p><u>POWER CONTROL</u> <u>PANEL</u> <u>ELAPSED TIME</u> Meter ME432-0011-0001</p>			X			<p>Calibration period, 13 weeks</p>

Table 3-5. C7-105 Rack, Auxiliary Memory

Equipment Nomenclature	Type of Inspection						Inspection Requirements
	Receipt	Daily	Periodic	Special	Shipping	Storage	
C7-105 Rack, Auxiliary Memory	X						Visually inspect for evidence of physical damage due to shipping or storage
NOTE	X						Calibrate and adjust in accordance with SM-S-II-19 Computer Complex Maintenance Manual
This piece of equipment is a special end item which has supplier warranty and maintenance contract responsibility. Malfunction corrective action is covered by supplier and shall be so noted.	X						Functional checkout per instructions in SM-S-II-19 Computer Complex Maintenance Manual
		X					Visually inspect for 1. Evidence of physical damage 2. Equipment and surrounding area for cleanliness and freedom from contaminants 3. All electrical receptacles not in use properly capped and protected against contamination
				X			Functional checkout of associated circuitry when any component is replaced

Table 3-6. C7-106 Rack, Buffer Equipment

Equipment Nomenclature	Type of Inspection						Inspection Requirements
	Receiving	Daily	Periodic	Special	Shipping	Storage	
C7-106 Rack, Buffer Equipment	X						Visually inspect for evidence of physical damage due to shipping or storage
	X						Calibrate and adjust in accordance with SM-S-II-19 Computer Complex Maintenance Manual
	X						Functional checkout per instructions in SM-S-II-19 Computer Complex Maintenance Manual
		X					Visually inspect for 1. Evidence of physical damage 2. Equipment and surrounding area for cleanliness and freedom from contaminants 3. All electrical receptacles not in use properly capped and protected against contamination
			X				Functional checkout of associated circuitry when any component is replaced

Table 3-8. C7-107 Rack, Digital Driver Link, Local

Equipment Nomenclature	Type of Inspection						Inspection Requirements
	Receiving	Daily	Periodic	Special	Shipping	Storage	
C7-107 Rack, Digital Driver Link, Local	X						Visually inspect for evidence of physical damage due to shipping or storage
	X						Calibrate and adjust in accordance with SM-S-II-19 Computer Complex Maintenance Manual
	X						Functional checkout per instructions in SM-S-II-19 Computer Complex Maintenance Manual
		X					Visually inspect for 1. Evidence of physical damage 2. Equipment and surrounding area for cleanliness and freedom from contaminants 3. All electrical receptacles not in use properly capped and protected against contamination
				X			Functional checkout of associated circuitry when any component is replaced
					X	X	Package for shipment or storage in accordance with MSC Drawing 10509302
					X	X	Mark for shipment or storage in accordance with Specification MIL-STD-129

Table 3-9. C7-107 Rack, Digital Driver Link, Local, Components

Component Nomenclature	Limits					Inspection Requirements
	Operating	Replacement	Calibration:	Shelf Life	Damage	
<p><u>POWER CONTROL PANEL</u></p> <p>ELAPSED TIME Meter ME432-0011-0001</p>			X			<p>Calibration period, 13 weeks</p>

Table 3-10. C7-108 Rack, Digital Driver Link, Remote

Equipment Nomenclature	Type of Inspection						Inspection Requirements
	Receiving	Daily	Periodic	Special	Shipping	Storage	
C7-108 Rack, Digital Driver Link, Remote	X						Visually inspect for evidence of physical damage due to shipping or storage
	X						Calibrate and adjust in accordance with SM-S-II-19 Computer Complex Maintenance Manual
	X						Functional checkout per instructions in SM-S-II-19 Computer Complex Maintenance Manual
		X					Visually inspect for 1. Evidence of physical damage 2. Equipment and surrounding area for cleanliness and freedom from contaminants 3. All electrical receptacles not in use properly capped and protected against contamination
				X			Functional checkout of associated circuitry when any component is replaced
					X	X	Package for shipment or storage in accordance with MSFC Drawing 10509302
				X	X	Mark for shipment or storage in accordance with Specification MIL-STD-129	

Table 3-11. C7-108 Rack, Digital Driver Link, Remote, Components

Component Nomenclature	Limits					Inspection Requirements
	Operating	Replacement	Calibration	Shelf Life	Damage	
<u>POWER CONTROL PANEL</u>						
ELAPSED TIME Meter ME432-0011-0001			X			Calibration period, 13 weeks

Table 3-12. C7-109 Rack, Computer Isolation

Equipment Nomenclature	Type of Inspection						Inspection Requirements
	Receiving	Daily	Periodic	Special	Shipping	Storage	
C7-109 Rack, Computer Isolation	X						Visually inspect for evidence of physical damage due to shipping or storage
	X						Calibrate and adjust in accordance with SM-S-II-19 Computer Complex Maintenance Manual
	X						Functional checkout per instructions in SM-S-II-19 Computer Complex Maintenance Manual
		X					Visually inspect for 1. Evidence of physical damage 2. Equipment and surrounding area for cleanliness and freedom from contaminants 3. All electrical receptacles not in use properly capped and protected against contamination
				X			Functional checkout of associated circuitry when any component is replaced
					X	X	Package for shipment or storage in accordance with MSFC Drawing 10509302
					X	X	Mark for shipment or storage in accordance with Specification MIL-STD-129

Table 3-13. C7-109 Rack, Computer Isolation, Components

Component Nomenclature	Limits					Inspection Requirements
	Operating	Replacement	Calibration	Shelf Life	Damage	
<p><u>POWER CONTROL PANEL</u></p> <p>ELAPSED TIME Meter ME432-0011-0001</p>			X			Calibration period, 13 weeks

SECTION IV
ELECTRICAL CHECKOUT STATION

4-1. GENERAL.

4-2. This section contains tables listing the inspection requirements and component limitations necessary to maintain the electrical checkout station which supports the Saturn S-II stage.

4-3. The first table on each piece of equipment lists equipment breakdown, type of inspection, and inspection requirements. The inspection requirements prescribed by this manual are stated in a manner which establishes what conditions are to be sought. It does not contain instructions for repair, adjustment, or other means of rectifying defective conditions.

4-4. The second table lists the equipment components and the operating, replacement, calibration, shelf life, and damage limitations. This table will be included only for the pieces of equipment to which it applies.

4-5. All equipment is listed in numerical model number sequence to assist in easier location of any particular piece of equipment. The periods designated in this manual for accomplishment of the various inspection requirements are the maximum time periods allowed. When abnormal conditions dictate, the frequency and/or scope of inspection should be increased as required.

Table 4-1. C7-201 Rack, Automatic Control

Equipment Nomenclature	Type of Inspection						Inspection Requirements
	Receiving	Daily	Periodic	Special	Shipping	Storage	
C7-201 Rack, Automatic Control	X						Visually inspect for evidence of physical damage due to shipping or storage
	X						Calibrate and adjust in accordance with SM-S-II-14 Electrical Checkout Station Maintenance Manual
	X						Functional checkout in accordance with instructions in SM-S-II-14 Electrical Checkout Station Maintenance Manual
		X					Visually inspect for <ol style="list-style-type: none"> 1. Evidence of physical damage 2. All electrical receptacles not in use properly capped and protected against contamination 3. Equipment and surrounding area for cleanliness and freedom from contaminants
				X			Functional checkout of associated function when any component is replaced
					X	X	Package for shipment or storage in accordance with MSFC Drawing 10509302
				X	X	Mark for shipment or storage in accordance with Specification MIL-STD-129	

Table 4-2. C7-201 Rack, Automatic Control, Components

Component Nomenclature	Limits					Inspection Requirements
	Operating	Replacement	Calibration	Shelf Life	Damage	
<u>POWER CONTROL PANEL</u>						
28 VDC Meter 100-09504			X			Calibration period, 13 weeks
120 VAC Meter 100-08392			X			Calibration period, 13 weeks
RACK OPERATING TIME Meter 620			X			Calibration period, 13 weeks

Table 4-3. C7-202 Rack, Manual Control and Display

Equipment Nomenclature	Type of Inspection						Inspection Requirements
	Receiving	Daily	Periodic	Special	Shipping	Storage	
C7-202 Rack, Manual Control and Display	X						Visually inspect for evidence of physical damage due to shipping or storage
	X						Calibrate and adjust in accordance with SM-S-II-14 Electrical Checkout Station Maintenance Manual
	X						Functional checkout in accordance with instructions in SM-S-II-14 Electrical Checkout Station Maintenance Manual
		X					Visually inspect for 1. Evidence of physical damage 2. Exposed electrical receptacles not in use properly capped and protected against contamination 3. Equipment and surrounding area for cleanliness and freedom from contaminants
				X			Functional checkout of associated circuitry when any component is replaced
					X	X	Package for shipment or storage in accordance with MSFC Drawing 10509302
					X	X	Mark for shipment or storage in accordance with Specification MIL-STD-129

Table 4-4. C7-202 Rack, Manual Control and Display, Components

Component Nomenclature	Limits					Inspection Requirements
	Operating	Replacement	Calibration	Shelf Life	Damage	
<u>POWER CONTROL PANEL</u>						
28 VDC Meter 100-09504			X			Calibration period, 13 weeks
120 VAC Meter 100-08392			X			Calibration period, 13 weeks
RACK OPERATING TIME Meter 620			X			Calibration period, 13 weeks
<u>ENGINE POSITION INDICATORS DRAWER</u>						
ENGINE NO. 1 METER GM 250375						
ENGINE NO. 2 METER GM 250375						
ENGINE NO. 3 METER GN 250375						
ENGINE NO. 4 METER GM 250375						

Table 4-5. C7-204 Rack, Signal Distribution

Equipment Nomenclature	Type of Inspection						Inspection Requirements
	Receiving	Daily	Periodic	Special	Shipping	Storage	
C7-204 Rack, Signal Distribution	X						Visually inspect for evidence of physical damage due to shipping or storage
	X						Calibrate and adjust in accordance with SM-S-II-14 Electrical Checkout Station Maintenance Manual
	X						Functional checkout in accordance with instructions in SM-S-II-14 Electrical Checkout Station Maintenance Manual
		X					Visually inspect for 1. Evidence of physical damage 2. All electrical receptacles not in use properly capped and protected against contamination 3. Equipment and surrounding area for cleanliness and freedom from contaminants
				X			Functional checkout of associated function when any component is replaced
					X	X	Package for shipment or storage in accordance with MSFC Drawing 10509302
				X	X	Mark for shipment or storage in accordance with Specification MIL-STD-129	

Table 4-6. C7-204 Rack, Signal Distribution, Components

Component Nomenclature	Type of Inspection					Inspection Requirements
	Operating	Replacement	Calibration	Shelf Life	Damage	
<u>POWER CONTROL PANEL</u>						
28 VDC Meter 100-09504			X			Calibration period, 13 weeks
120 VAC Meter 100-08392			X			Calibration period, 13 weeks
RACK OPERATING TIME Meter 620			X			Calibration period, 13 weeks

Table 4-7. C7-205 Rack, Special Data

Equipment Nomenclature	Type of Inspection						Inspection Requirements
	Receiving	Daily	Periodic	Special	Shipping	Storage	
C7-205 Rack, Special Data	X						Visually inspect for evidence of physical damage due to shipping or storage
	X						Calibrate and adjust in accordance with SM-S-II-14 Electrical Checkout Station Maintenance Manual
	X						Functional checkout in accordance with instructions in SM-S-II-14 Electrical Checkout Station Maintenance Manual
		X					Visually inspect for 1. Evidence of physical damage 2. All electrical receptacles not in use properly capped and protected against contamination 3. Equipment and surrounding area for cleanliness and freedom from contaminants
				X			Functional checkout of associated function when any component is replaced
					X	X	Package for shipment or storage in accordance with MSFC Drawing 10509302
				X	X	Mark for shipment or storage in accordance with Specification MIL-STD-129	

Table 4-8. C7-205 Rack, Special Data, Components

Component Nomenclature	Limits						Inspection Requirements
	Operating	Replacement	Calibration	Shelf Life	Damage		
DIGITAL MULTIMETER ME432-0034	X		X				Operating limits 10,000 hours with 200 hours maintenance intervals
UNIV. COUNTER TIMER ME432-0033			X				Calibration period, 8 weeks

Table 4-9. C7-208 Rack, Station Control and Display

Equipment Nomenclature	Type of Inspection						Inspection Requirements
	Receiving	Daily	Periodic	Special	Shipping	Storage	
C7-208 Rack, Station Control and Display	X						Visually inspect for evidence of physical damage due to shipping or storage
	X						Calibrate and adjust in accordance with SM-S-II-14 Electrical Checkout Station Maintenance Manual
	X						Functional checkout in accordance with instructions in SM-S-II-14 Electrical Checkout Station Maintenance Manual
		X					Visually inspect for 1. Evidence of physical damage 2. All electrical receptacles not in use properly capped and protected against contamination 3. Equipment and surrounding area for cleanliness and freedom from contaminants
				X			Functional checkout of associated function when any component is replaced
					X	X	Package for shipment or storage in accordance with MSFC Drawing 10509302
				X	X	Mark for shipment or storage in accordance with Specification MIL-STD-129	

Table 4-10. C7-209 Rack, Control and Display, Local

Equipment Nomenclature	Type of Inspection						Inspection Requirements
	Receiving	Daily	Periodic	Special	Shipping	Storage	
C7-209 Rack, Control and Display, Local	X						Visually inspect for evidence of physical damage due to shipping or storage
	X						Calibrate and adjust in accordance with SM-S-II-14 Electrical Checkout Station Maintenance Manual
	X						Functional checkout in accordance with instruction in SM-S-II-14 Electrical Checkout Station Maintenance Manual
		X					Visually inspect for 1. Evidence of physical damage 2. All electrical receptacles not in use properly capped and protected against contamination 3. Equipment and surrounding area for cleanliness and freedom from contaminants
				X			Functional checkout of associated function when any component is replaced
					X	X	Package for shipment or storage in accordance with MSFC Drawing 10509302
					X	X	Mark for shipment or storage in accordance with Specification MIL-STD-129

Table 4-11. C7-210 Rack, Stage Substitutes

Equipment Nomenclature	Type of Inspection						Inspection Requirements
	Receiving	Daily	Periodic	Special	Shipping	Storage	
C7-210 Rack, Stage Substitutes	X						Visually inspect for evidence of physical damage due to shipping or storage
	X						Calibrate and adjust in accordance with SM-S-II-14 Electrical Checkout Station Maintenance Manual
	X						Functional checkout in accordance with instruction in SM-S-II-14 Electrical Checkout Station Maintenance Manual
		X					Visually inspect for 1. Evidence of physical damage 2. All electrical receptacles not in use properly capped and protected against contamination 3. Equipment and surrounding area for cleanliness and freedom from contaminants
				X			Functional checkout of associated circuitry when any component is replaced
					X	X	Package for shipment or storage in accordance with MSFC Drawing 10509302
				X	X	Mark for shipment or storage in accordance with Specification MIL-STD-129	

Table 4-12. C7-210 Rack, Stage Substitutes, Components

Component Nomenclature	Limits					Inspection Requirements
	Operating	Replacement	Calibration	Shelf Life	Damage	
<u>POWER CONTROL PANEL</u>						
28 VDC Meter 100-09504			X			Calibration period, 13 weeks
120 VAC Meter 100-08392			X			Calibration period, 13 weeks
RACK OPERATING TIME Meter 620			X			Calibration period, 13 weeks

Table 4-13. C7-211 Rack, Scanning

Equipment Nomenclature	Type of Inspection						Inspection Requirements
	Receiving	Daily	Periodic	Special	Shipping	Storage	
C7-211 Rack, Scanning	X						Visually inspect for evidence of physical damage due to shipping or storage
	X						Calibrate and adjust in accordance with SM-S-II-14 Electrical Checkout Station Maintenance Manual
	X						Functional checkout in accordance with instructions in SM-S-II-14 Electrical Checkout Station Maintenance Manual
		X					Visually inspect for 1. Evidence of physical damage 2. All exposed electrical receptacles not in use properly capped and protected against contamination 3. Equipment and surrounding area for cleanliness and freedom from contaminants
				X			Functional checkout of associated function when any component is replaced
					X	X	Package for shipment or storage in accordance with MSFC Drawing 10509302
				X	X	Mark for shipment or storage in accordance with Specification MIL-STD-129	

Table 4-14. C7-212 Rack, Discrete Display

Equipment Nomenclature	Type of Inspection						Inspection Requirements
	Receiving	Daily	Periodic	Special	Shipping	Storage	
C7-212 Rack, Discrete Display	X						Visually inspect for evidence of physical damage due to shipping or storage
	X						Calibrate and adjust in accordance with SM-S-II-14 Electrical Checkout Station Maintenance Manual
	X						Functional checkout in accordance with instructions in SM-S-II-14 Electrical Checkout Station Maintenance Manual
		X					Visually inspect for 1. Evidence of physical damage 2. Equipment and surrounding area for cleanliness and freedom from contaminants 3. All exposed electrical receptacles not in use properly capped and protected against contamination
				X			Functional checkout of associated function when any component is replaced
					X	X	Package for shipment or storage in accordance with MSFC Drawing 10509302
					X	X	Package for shipment or storage in accordance with Specification MIL-STD-129

Table 4-15. C7-213 Rack, Relay Interlock

Equipment Nomenclature	Type of Inspection						Inspection Requirements
	Receiving	Daily	Periodic	Special	Shipping	Storage	
C7-213 Rack, Relay Interlock	X						Visually inspect for evidence of physical damage due to shipping or storage
	X						Calibrate and adjust in accordance with SM-S-II-14 Electrical Checkout Station Maintenance Manual
	X						Functional checkout in accordance with instructions in SM-S-II-14 Electrical Checkout Station Maintenance Manual
		X					Visually inspect for 1. Evidence of physical damage 2. All exposed electrical receptacles not in use properly capped and protected against contamination 3. Equipment and surrounding area for cleanliness and freedom from contaminants
				X			Functional checkout of associated circuitry when any component is replaced
					X	X	Package for shipment or storage in accordance with MSFC Drawing 10509302
				X	X	Mark for shipment or storage in accordance with Specification MIL-STD-129	

Table 4-16. C7-213 Rack, Relay Interlock, Components

Component Nomenclature	Limits						Inspection Requirements
	Operating	Replacement	Calibration	Shelf Life	Damage		
<u>Relay Tester Panel</u>							
Coil Current Meter 2531-4102002			X				Calibration period, 13 weeks
Contact Condition Meter 2531-4101003			X				Calibration period, 13 weeks

Table 4-17. C7-801 Rack, Static Firing A, Local

Equipment Nomenclature	Type of Inspection						Inspection Requirements
	Receiving	Daily	Periodic	Special	Shipping	Storage	
C7-801 Rack, Static Firing A, Local	X						Visually inspect for physical damage due to shipping or storage
	X						Calibrate and adjust in accordance with SM-S-II-14 Electrical Checkout Station Maintenance Manual
	X						Functional checkout in accordance with instructions in SM-S-II-14 Electrical Checkout Station Maintenance Manual
		X					Visual inspection for <ol style="list-style-type: none"> 1. Evidence of physical damage 2. All exposed electrical receptacles not in use properly capped and protected against contamination 3. Equipment and surrounding area for cleanliness and contaminants
				X			Functional checkout of associated circuitry when any component is replaced
					X	X	Package for shipment or storage in accordance with MSFC Drawing 10509302
				X	X	Mark for shipment or storage in accordance with Specification MIL-STD-129	

Table 4-18. C7-802 Rack, Static Firing A, Remote

Equipment Nomenclature	Type of Inspection						Inspection Requirements
	Receiving	Daily	Periodic	Special	Shipping	Storage	
C7-802 Rack, Static Firing A, Remote	X						Visually inspect for physical damage due to shipping or storage
	X						Calibrate and adjust in accordance with SM-S-II-14 Electrical Checkout Station Maintenance Manual
	X						Functional checkout in accordance with instructions in SM-S-II-14 Electrical Checkout Station Maintenance Manual
		X					Visual inspection for <ol style="list-style-type: none"> Evidence of physical damage All exposed electrical receptacles not in use properly capped and protected against contamination Equipment and surrounding area for cleanliness and contaminants
				X			Functional checkout of associated circuitry when any component is replaced
					X	X	Package for shipment or storage in accordance with MSFC Drawing 10509302
					X	X	Mark for shipment or storage in accordance with Specification MIL-STD-129

Table 4-19. C7-803 Rack, Static Firing B, Local

Equipment Nomenclature	Type of Inspection						Inspection Requirements
	Receiving	Daily	Periodic	Special	Shipping	Storage	
C7-803 Rack, Static Firing B, Local	X						Visually inspect for physical damage due to shipping or storage
	X						Calibrate and adjust in accordance with SM-S-II-14 Electrical Checkout Station Maintenance Manual
	X						Functional checkout in accordance with instructions in SM-S-II-14 Electrical Checkout Station Maintenance Manual
		X					Visual inspection for 1. Evidence of physical damage 2. All exposed electrical receptacles not in use properly capped and protected against contamination 3. Equipment and surrounding area for cleanliness and contaminants
				X			Functional checkout of associated circuitry when any component is replaced
					X	X	Package for shipment or storage in accordance with MSFC Drawing 10509302
					X	X	Mark for shipment or storage in accordance with Specification MIL-STD-129

SECTION V

RADIO FREQUENCY CHECKOUT STATION

5-1. GENERAL.

5-2. This section contains tables listing the inspection requirements and component limitations necessary to maintain the radio frequency checkout station which supports the Saturn S-II stage.

5-3. The first table on each piece of equipment lists equipment breakdown, type of inspection, and inspection requirements. The inspection requirements prescribed by this manual are stated in a manner which establishes what conditions are to be sought. It does not contain instructions for repair, adjustment, or other means of rectifying defective conditions.

5-4. The second table lists the equipment components and the operating, replacement, calibration, shelf life, and damage limitations. This table will be included only for the pieces of equipment to which it applies.

5-5. All equipment is listed in numerical model number sequence to assist in easier location of any particular piece of equipment. The periods designated in this manual for accomplishment of the various inspection requirements are the maximum time period allowed. When abnormal conditions dictate, the frequency and/or scope of inspection should be increased as required.

Table 5-1. C7-307 Rack, Checkout, Command Destruct Receiver

Equipment Nomenclature	Type of Inspection						Inspection Requirements
	Receiving	Daily	Periodic	Special	Shipping	Storage	
C7-307 Rack R/F Checkout, Manual	X						Visually inspect for evidence of physical damage due to shipping or storage
	X						Calibrate and adjust in accordance with SM-S-II-12 Radio Frequency Checkout Station Maintenance Manual
	X						Functional checkout in accordance with instructions in SM-S-II-12 Radio Frequency Checkout Station Maintenance Manual
		X					Visually inspect for <ol style="list-style-type: none"> 1. Evidence of physical damage 2. All exposed electrical receptacles not in use properly capped and protected against contamination 3. Equipment and surrounding area for cleanliness and freedom from contaminants
				X			Functional checkout of associated circuitry when any component is replaced
					X	X	Package for shipment or storage in accordance with MSFC Drawing 10509302
				X	X	Mark for shipment or storage in accordance with Specification MIL-STD-129	

Table 5-2. C7-307 Rack, Checkout, Command Destruct Receiver, Components

Component Nomenclature	Limits					Remarks
	Operating	Replacement	Calibration	Shelf Life	Damage	
<u>COUNTER DRAWER</u>						
COUNTER (Hewlett Packard 521-DR)			X			Calibration period, 8 weeks
<u>AC VACUUM TUBE VOLTMETER DRAWER</u>						
A. C. VACUUM TUBE VOLTMETER (Ballantine 320)			X			Calibration period, 3 weeks
<u>D. C. VACUUM TUBE VOLTMETER DRAWER</u>						
D. C. VACUUM TUBE VOLTMETER (J. Fluke 801-BR)			X			Calibration period, 8 weeks
AUDIO SIGNAL GENERATOR (Hewlett-Packard 200CDR)			X			Calibration period, 8 weeks

Table 5-2. C7-307 Rack, Checkout, Command Destruct Receiver, Components (Cont)

Component Nomenclature	Limits					Remarks
	Operating	Replacement	Calibration	Shelf Life	Damage	
<u>COMPONENT TEST PANEL</u>						
DC AMMETER 103-00060			X			Calibration period, 13 weeks
<u>POWER CONTROL PANEL</u>						
28 VDC Meter 100-09504			X			Calibration period, 13 weeks
120 VAC Meter 100-08392			X			Calibration period, 13 weeks
RACK OPERATING Time Meter 620			X			Calibration period, 13 weeks

SECTION VI
DIGITAL DATA CHECKOUT STATION

6-1. GENERAL.

6-2. This section contains tables listing the inspection requirements, and component limitations necessary to maintain the digital data checkout station which supports the Saturn S-II stage.

6-3. The first table on each piece of equipment lists equipment breakdown, type of inspection, and inspection requirements. The inspection requirements prescribed by this manual are stated in a manner which establishes what conditions are to be sought. It does not contain instructions for repair, adjustment, or other means of rectifying defective conditions.

6-4. The second table lists the equipment components and the operating, replacement, calibration, shelf life, and damage limitations. This table will be included only for the pieces of equipment to which it applies.

6-5. All equipment is listed in numerical model number sequence to assist in easier location of any particular piece of equipment. The periods designated in this manual for accomplishment of the various inspection requirements are the maximum time periods allowed. When abnormal conditions dictate, the frequency and/or scope of inspection should be increased as required.

Table 6-1. C7-401 Rack, Automatic Control and Display

Equipment Nomenclature	Type of Inspection						Inspection Requirements
	Receiving	Daily	Periodic	Special	Shipping	Storage	
C7-401 Rack, Automatic Control and Display	X						Visually inspect for evidence of physical damage due to shipping or storage
	X						Calibrate and adjust in accordance with SM-S-II-16 Digital Data Acquisition Station Maintenance Manual
	X						Functional checkout in accordance with instructions in SM-S-II-16 Digital Data Acquisition Station Maintenance Manual
		X					Visually inspect for <ol style="list-style-type: none"> 1. Evidence of physical damage 2. All electrical receptacles not in use properly capped and protected against contamination 3. Equipment and surrounding area for cleanliness and freedom from contaminants
				X			Functional checkout of associated circuitry when any component is replaced
					X	X	Package for shipment or storage in accordance with MSFC Drawing 10509302
					X	X	Mark for shipment, or storage in accordance with Specification MIL-STD-129

Table 6-2. C7-401 Rack, Automatic Control and Display, Components

Component Nomenclature	Limits						Inspection Requirements
	Operating	Replacement	Calibration	Shelf Life	Damage		
<u>POWER CONTROL PANEL</u> ELAPSED TIME Meter ME432-0011-0001			X				Calibration period 13 weeks

Table 6-3. C7-402 Rack, Manual Control and Display

Equipment Nomenclature	Type of Inspection						Inspection Requirements
	Receiving	Daily	Periodic	Special	Shipping	Storage	
C7-402 Rack, Manual Control and Display	X						Visually inspect for evidence of physical damage due to shipping or storage
	X						Calibrate and adjust in accordance with SM-S-II-16 Digital Data Acquisition Station Maintenance Manual
	X						Functional checkout in accordance with instructions in SM-S-II-16 Digital Data Acquisition Station Maintenance Manual
		X					Visually inspect for <ol style="list-style-type: none"> 1. Evidence of physical damage 2. All electrical receptacles not in use properly capped and protected against contamination 3. Equipment and surrounding area for cleanliness and freedom from contaminants
				X			Functional checkout of associated circuitry when any component is replaced
					X	X	Package for shipment or storage in accordance with MSFC Drawing 10509302
					X	X	Mark for shipment or storage in accordance with Specification MIL-STD-129

Table 6-4. C7-403 Rack, PCM

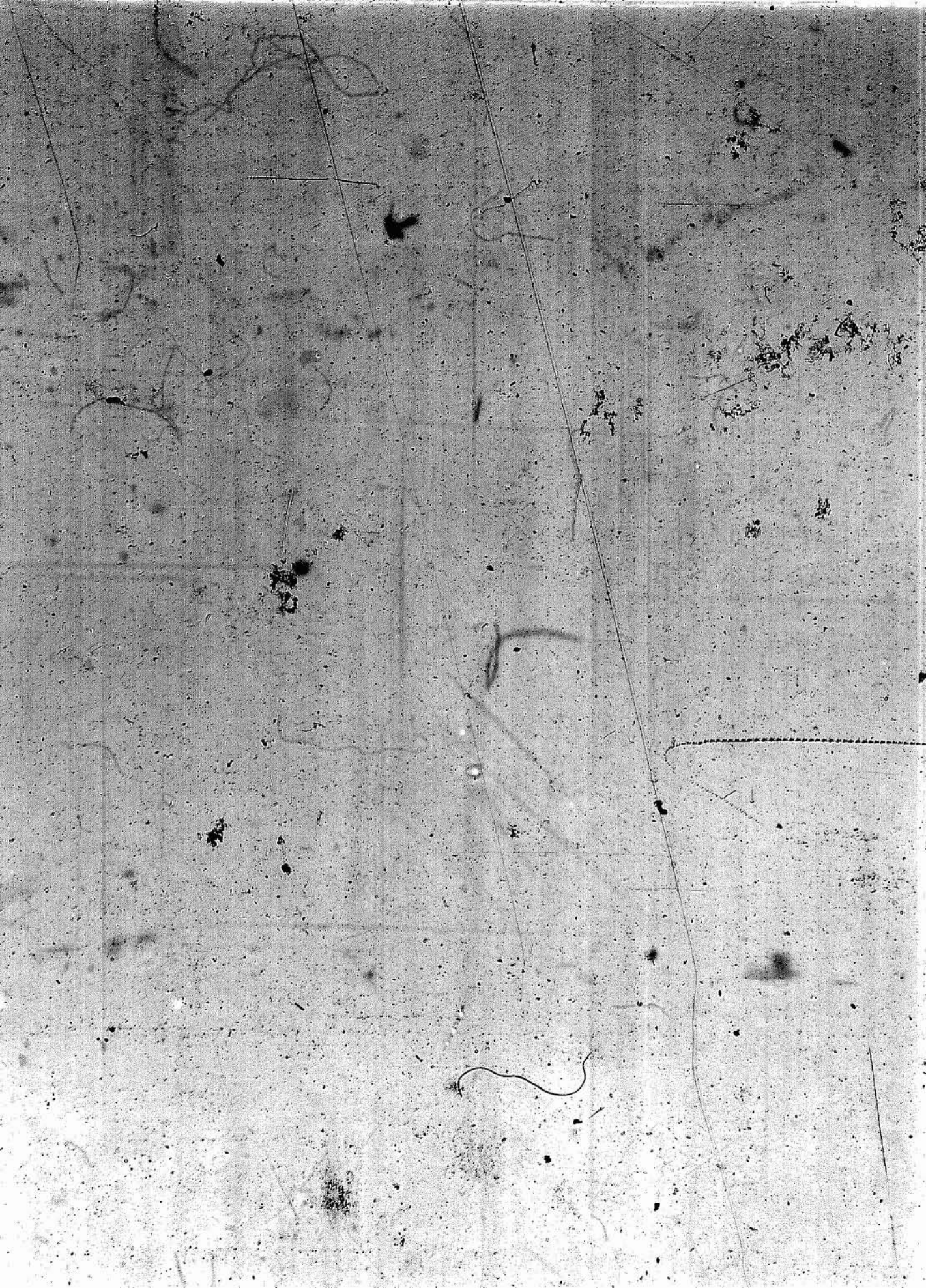
Equipment Nomenclature	Type of Inspection						Inspection Requirements
	Receiving	Daily	Periodic	Special	Shipping	Storage	
C7-403 Rack PCM	X						Visually inspect for evidence of physical damage due to shipping or storage
	X						Calibrate and adjust in accordance with SM-S-II-16 Digital Data Acquisition Station Maintenance Manual
	X						Functional checkout in accordance with instructions in SM-S-II-16 Digital Data Acquisition Station Maintenance Manual
		X					Visually inspect for <ol style="list-style-type: none"> 1. Evidence of physical damage 2. All electrical receptacles not in use properly capped and protected against contamination 3. Equipment and surrounding area for cleanliness and freedom from contaminants
				X			Functional checkout of associated function when any component is replaced
				X	X		Package for shipment or storage in accordance with MSFC Drawing 10509302

Table 6-5. C7-406 Rack, Computer Adapter

Equipment Nomenclature	Type of Inspection						Inspection Requirements
	Receiving	Daily	Periodic	Special	Shipping	Storage	
C7-406 Rack Computer Adapter	X						Visually inspect for evidence of physical damage due to shipping or storage
	X						Calibrate and adjust in accordance with SM-S-II-16 Digital Data Acquisition Station Maintenance Manual
	X						Functional checkout in accordance with instructions in SM-S-II-16 Digital Data Acquisition Station Maintenance Manual
		X					Visually inspect for <ol style="list-style-type: none"> 1. Evidence of physical damage 2. All electrical receptacles not in use properly capped and protected against contamination 3. Equipment and surrounding area for cleanliness and freedom from contaminants
				X			Functional checkout of associated circuitry when any component is replaced
					X	X	Package for shipment or storage in accordance with MSFC Drawing 10509302
				X	X	Mark for shipment or storage in accordance with specification MIL-STD-129	

Table 6-6. C7-106 Rack, Computer Adapter, Components

Component Nomenclature	Limits					Inspection Requirements
	Operating	Replacement	Calibration	Shelf Life	Damage	
<u>POWER CONTROL</u> <u>PANEL</u> ELAPSED TIME Meter ME432-0011-0001			X			Calibration period, 13 weeks



SECTION VII

TELEMETER CHECKOUT STATION

7-1. GENERAL.

7-2. This section contains tables listing the inspection requirements, and component limitations necessary to maintain the telemetry checkout station which supports the Saturn S-II stage.

7-3. The first table on each piece of equipment lists equipment breakdown, type of inspections and inspection requirements. The inspection requirements prescribed by this manual are stated in a manner which establishes what conditions are to be sought. It does not contain instructions for repair, adjustment, or other means of rectifying defective conditions.

7-4. The second table lists the equipment components and the operating, replacement, calibration, shelf life, and damage limitations. This table will be included only for the pieces of equipment to which it applies.

7-5. All equipment is listed in numerical model number sequence to assist in easier location of any particular piece of equipment. The periods designated in this manual for accomplishment of the various inspection requirements are the maximum time periods allowed. When abnormal conditions dictate, the frequency and/or scope of inspection should be increased as required.

Table 7-1. C7-510, Rack, Automatic Control and Display

Equipment Nomenclature	Type of Inspection						Inspection Requirements
	Receiving	Daily	Periodic	Special	Shipping	Storage	
C7-510 Rack, Automatic Control and Display	X						Visually inspect for evidence of physical damage due to shipping or storage
	X						Calibrate and adjust in accordance with SM-S-II-15 Telemeter Checkout Station Maintenance Manual
	X						Functional checkout in accordance with instructions in SM-S-II-15 Telemeter Checkout Station Maintenance Manual
		X					Visually inspect for <ol style="list-style-type: none"> 1. Evidence of physical damage 2. All electrical receptacles not in use properly capped and protected against contamination 3. Equipment and surrounding area for cleanliness and contaminants
				X			Functional checkout of associated function when any component is replaced
					X	X	Package for shipment or storage in accordance with MSFC Drawing 10509302
				X	X	Mark for shipment or storage in accordance with Specification MIL-STD-129	

Table 7-2. C7-510 Rack, Automatic Control and Display, Components

Component Nomenclature		Limits					Inspection Requirements
		Operating	Replacement	Calibration	Shelf Life	Damage	
<u>POW</u>	<u>CONTROL</u>						
<u>PAN</u>							
28 VDC Meter 100-09504				X			Calibration period, 13 weeks
120 VAC Meter 100-08392				X			Calibration period, 13 weeks
RACK OPERATING TIME Meter 639				X			Calibration period, 13 weeks

Table 7-3. C7-511 Rack, Digitizing System

Equipment Nomenclature	Type of Inspection						Inspection Requirements
	Receiving	Daily	Periodic	Special	Shipping	Storage	
C7-511 Rack, Digitizing System	X						Visually inspect for evidence of physical damage due to shipping or storage
	X						Calibrate and adjust in accordance with SM-S-II-15 Telemeter Checkout Station Maintenance Manual
	X						Functional checkout in accordance with instructions in SM-S-II-15 Telemeter Checkout Station Maintenance Manual
		X					Visually inspect for <ol style="list-style-type: none"> 1. Evidence of physical damage 2. All electrical receptacles not in use properly capped and protected against contamination 3. Equipment and surrounding area for cleanliness and contaminants
				X			Functional checkout of associated function when any component is replaced
					X	X	Package for shipment or storage in accordance with MSFC Drawing 10509302
					X	X	Mark for shipment or storage in accordance with Specification MIL-STD-129

Table 7-4. C7-512 Rack, Oscillograph

Equipment Nomenclature	Type of Inspection						Inspection Requirements
	Receiving	Daily	Periodic	Special	Shipping	Storage	
C7-512 Rack, Oscillograph	X						Visually inspect for evidence of physical damage due to shipping or storage
	X						Calibrate and adjust in accordance with SM-S-II-15 Telemeter Checkout Station Maintenance Manual
	X						Functional checkout in accordance with instructions in SM-S-II-15 Telemeter Checkout Station Maintenance Manual
		X					Visually inspect for <ol style="list-style-type: none"> 1. Evidence of physical damage 2. All electrical receptacles not in use properly capped and protected against contamination 3. Equipment and surrounding area for cleanliness and contaminants
				X			Functional checkout of associated function when any component is replaced
					X	X	Package for shipment or storage in accordance with MSFC Drawing 10509302
				X	X	Mark for shipment or storage in accordance with Specification MIL-STD-129	

Table 7-5. C7-512 Rack, Oscillograph. Components

Component Nomenclature	Limits					Inspection Requirements
	Operating	Replacement	Cali: on	Shelf Life	Damage	
<u>POWER CONTROL PANEL</u>						Calibration period, 13 weeks
28 VDC Meter 100-09504			X			Calibration period, 13 weeks
120 VAC Meter 100-08392			X			Calibration period, 13 weeks
RACK OPERATING TIME Meter 620			X			

Table 7-6. C7-513 Rack, Decommutation

Equipment Nomenclature	Type of Inspection						Inspection Requirements
	Receiving	Daily	Periodic	Special	Shipping	Storage	
C7-513 Rack Decommutation	X						Visually inspect for evidence of physical damage due to shipping or storage
	X						Calibrate and adjust in accordance with SM-S-II-15 Telemeter Checkout Station Maintenance Manual
	X						Functional checkout in accordance with instructions in SM-S-II-15 Telemeter Checkout Station Maintenance Manual
		X					Visually inspect for <ol style="list-style-type: none"> 1. Evidence of physical damage 2. All electrical receptacles not in use properly capped and protected against contamination 3. Equipment and surrounding area for cleanliness and contaminants
				X			Functional checkout of associated function when any component is replaced
					X	X	Package for shipment or storage in accordance with MFC Drawing 10509302
				X	X	Mark for shipment or storage accordance with Specification MIL-STD-129	

Table 7-7. C7-513 Rack, Decommuration, Components

Component Nomenclature	Limits					Inspection Requirements
	Operating	Replacement	Calibration	Shelf Life	Damage	
POWER CONTROL PANEL						
28 VDC Meter 100-09504			X			Calibration period, 13 weeks
120 VAC Meter 100-08392			X			Calibration period, 13 weeks
RACK OPERATING TIME Meter 620			X			Calibration period, 13 weeks

Table 7-8. C7-514 Rack, Discriminator

Equipment Nomenclature	Type of Inspection						Inspection Requirements
	Receiving	Daily	Periodic	Special	Shipping	Storage	
C7-514 Rack, Discriminator	X						Visually inspect for evidence of physical damage due to shipping or storage
	X						Calibrate and adjust in accordance with SM-S-II-15 Telemeter Checkout Station Maintenance Manual
	X						Functional checkout in accordance with instructions in SM-S-II-15 Telemeter Checkout Station Maintenance Manual
		X					Visually inspect for <ol style="list-style-type: none"> 1. Evidence of physical damage 2. All electrical receptacles not in use properly capped and protected against contamination 3. Equipment and surrounding area for cleanliness and contaminants
				X			Functional checkout of associated circuitry when any component is replaced
					X	X	Package for shipment or storage in accordance with MSFC drawing 10509302
				X	X	Package for shipment or storage in accordance with Specification MIL-STD-129	

Table 7-9. C7-515 Rack, Receiver

Equipment Nomenclature	Type of Inspection						Inspection Requirements
	Receiving	Daily	Periodic	Special	Shipping	Storage	
C7-515 Rack, Receiver	X						Visually inspect for evidence of physical damage due to shipping or storage
	X						Calibrate and adjust in accordance with SM-S-II-15 Telemeter Checkout Station Maintenance Manual
	X						Functional checkout in accordance with instructions in SM-S-II-15 Telemeter Checkout Station Maintenance Manual
		X					Visually inspect for <ol style="list-style-type: none"> 1. Evidence of physical damage 2. All electrical receptacles not in use properly capped and protected against contamination 3. Equipment and surrounding area for cleanliness and contaminants
				X			Functional checkout of associated function when any component is replaced
					X	X	Package for shipment or storage in accordance with MSFC drawing 10509302
				X	X	Mark for shipment or storage in accordance with Specification MIL-STD-129	

Table 7-10. C7-515 Rack, Receiver, Components

Component Nomenclature	Limits					Inspection Requirements
	Operating	Replacement	Calibration	Shelf Life	Damage	
<u>POWER CONTROL PANEL</u>						
28 VDC Meter 100-09504			X			Calibration period, 13 weeks
120 VAC Meter 100-08392			X			Calibration period, 13 weeks
RACK OPERATING TIME Meter 620			X			Calibration period, 13 weeks

Table 7-11. C7-516 Rack, Tape Recorder

Equipment Nomenclature	Type of Inspection						Inspection Requirements
	Receiving	Daily	Periodic	Special	Shipping	Storage	
C7-516 Rack, Tape Recorder	X						Visually inspect for evidence of physical damage due to shipping or storage
	X						Calibrate and adjust in accordance with SM-S-II-15 Telemeter Checkout Station Maintenance Manual
	X						Functional checkout in accordance with instructions in SM-S-II-15 Telemeter Checkout Station Maintenance Manual
		X					Visually inspect for <ol style="list-style-type: none"> 1. Evidence of physical damage 2. All electrical receptacles not in use properly capped and protected against contamination 3. Equipment and surrounding area for cleanliness and contaminants
				X			Functional checkout of associated circuitry when any component is replaced
					X	X	Package for shipment or storage in accordance with MSFC drawing 10509302
					X	X	Mark for shipment or storage in accordance with Specification MIL-STD-129

Table 7-12. C7-518 Rack, Single Side Band

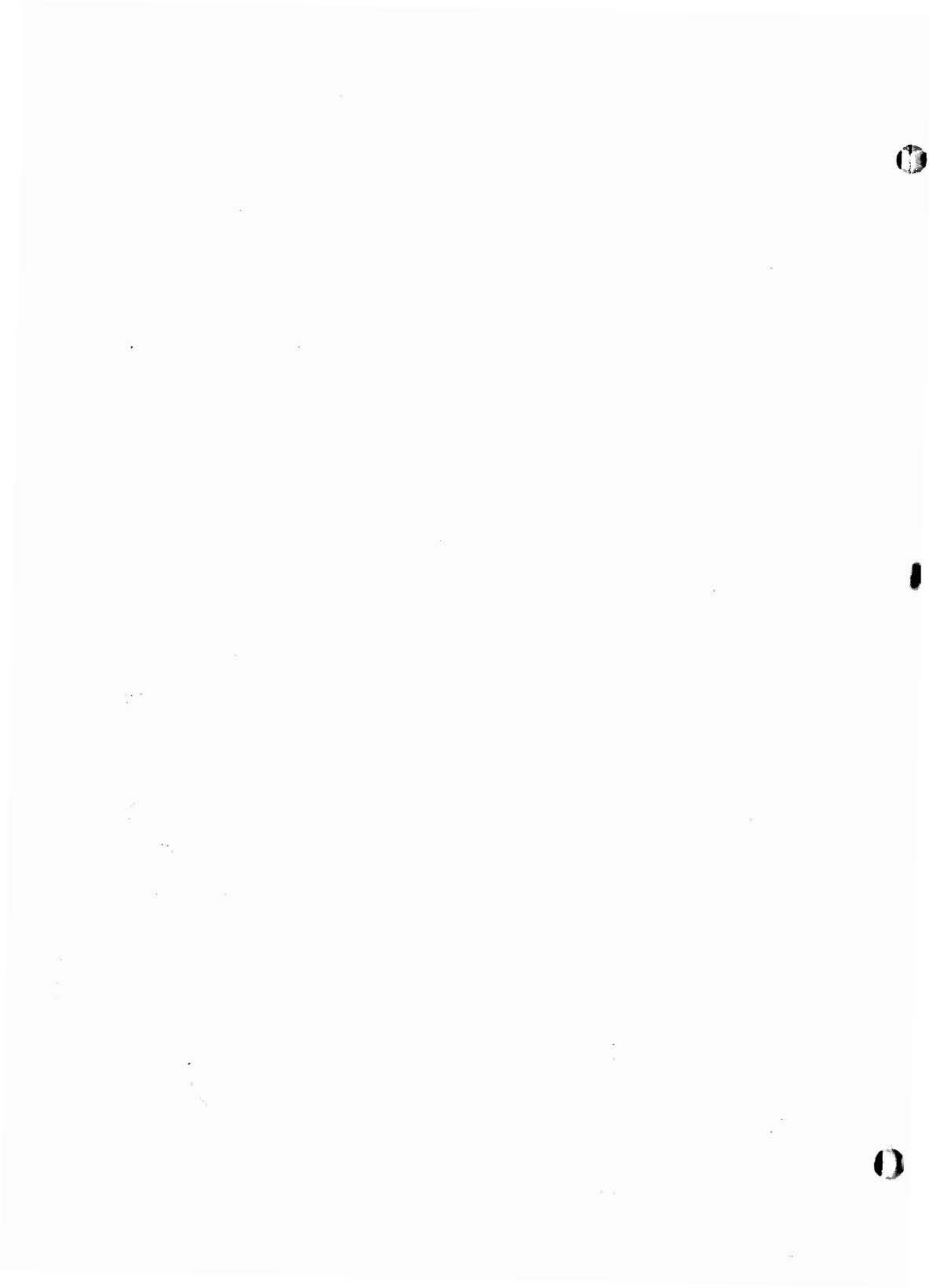
Equipment Nomenclature	Type of Inspection						Inspection Requirements
	Receiving	Daily	Periodic	Special	Shipping	Storage	
C7-518 Rack, Single Side Band	X						Visually inspect for evidence of physical damage due to shipping or storage
	X						Calibrate and adjust in accordance with SM-S-II-15 Telemeter Checkout Station Maintenance Manual
	X						Functional checkout in accordance with instructions in SM-S-II-15 Telemeter Checkout Station Maintenance Manual
		X					Visually inspect for <ol style="list-style-type: none"> 1. Evidence of physical damage; 2. All electrical receptacles not in use properly capped and protected against contamination 3. Equipment and surrounding area for cleanliness and contaminants
				X			Functional checkout of associated function when any component is replaced
					X	X	Package for shipment or storage in accordance with MSFC drawing 10509302
				X	X	Mark for shipment or storage in accordance with Specification MIL-STD-129	

Table 7-13. C7-518 Rack, Single Side Band, Components

Component Nomenclature	Limits					Inspection Requirements
	Operating	Replacement	Calibration	Shelf Life	Damage	
<u>POWER CONTROL PANEL</u>						
28 VDC Meter 100-09504			X			Calibration period, 13 weeks
120 VAC Meter 100-08392			X			Calibration period, 13 weeks
RACK OPERATING TIME Meter 620			X			Calibration period, 13 weeks

Table 7-14. C7-519 Rack, PCM

Equipment Nomenclature	Type of Inspection						Inspection Requirements
	Receiving	Daily	Periodic	Special	Shipping	Storage	
C7-519 Rack, PCM	X						Visually inspect for evidence of physical damage due to shipping or storage
	X						Calibrate and adjust in accordance with SM-S-II-15 Telemeter Checkout Station Maintenance Manual
	X						Functional checkout in accordance with instructions in SM-S-II-15 Telemeter Checkout Station Maintenance Manual
		X					Visually inspect for <ol style="list-style-type: none"> 1. Evidence of physical damage 2. All electrical receptacles not in use properly capped and protected against contamination 3. Equipment and surrounding area for cleanliness and contaminants
				X			Functional checkout of associated function when any component is replaced
						X	X
					X	X	Mark for shipment or storage in accordance with Specification MIL-STD-129



SECTION VIII

MECHANICAL CHECKOUT STATION

8-1. GENERAL.

8-2. This section contains tables listing the inspection requirements, and component limitations necessary to maintain the mechanical checkout station which supports the Saturn S-II stage.

8-3. The first table on each piece of equipment lists equipment breakdown, type of inspection, and inspection requirements. The inspection requirements prescribed by this manual are stated in a manner which establishes what conditions are to be sought. It does not contain instructions for repair, adjustment, or other means of rectifying defective conditions.

8-4. The second table lists the equipment components, and the operating, replacement, calibration, shelf life, and damage limitations. This table will be included only for the pieces of equipment to which it applies.

8-5. All equipment is listed in numerical model number sequence to assist in easier location of any particular piece of equipment. The periods designated in this manual for accomplishment of the various inspection requirements are the maximum time periods allowed. When abnormal conditions dictate, the frequency and/or scope of inspection should be increased as required.

Table 8-1. C7-601 Console, Hydraulic Power

Equipment Nomenclature	Type of Inspection						Inspection Requirements
	Receiving	Daily	Periodic	Special	Shipping	Storage	
C7-601 Console, Hydraulic Power	X						Visual inspection for evidence of physical damage due to shipping or storage
	X						Calibrate and adjust in accordance with SM-S-II-11 Mechanical Checkout Station Maintenance Manual
	X						Functional checkout per instructions in SM-S-II-11 Mechanical Checkout Station Maintenance Manual
		X					Visually inspect for: 1. Evidence of physical damage 2. All exposed electrical and service receptacles not in use properly capped and protected against contamination
				X			Functional checkout of associated functions when any component is replaced

Table 8-1. C7-601 Console, Hydraulic Power (Cont)

Equipment Nomenclature	Type of Inspection						Inspection Requirements
	Receiving	Daily	Periodic	Special	Shipping	Storage	
C7-601 Console, Hydraulic Power			X				Service every 60 days in accordance with SM-S-II-11 Mechanical Check-out Station Maintenance Manual
	X	X					Visually inspect for fluid leaks, proper reservoir fluid level, and accumulator precharge
	X	X	X				Every 5 hours of operation, and daily, whichever comes first, perform fluid contamination check in accordance with instructions in SM-S-II-11 Mechanical Checkout Station Maintenance Manual
					X	X	Package for shipment or storage in accordance with MSFC Drawing 10509302
				X	X	Mark for shipment or storage in accordance with Specification MIL-STD-129	

Table 8-2. C7-601 Console, Hydraulic Power, Components

Component Nomenclature	Limits					Inspection Requirements
	Operating	Replacement	Calibration	Shelf Life	Damage	
<u>MOTOR STARTER PANEL</u>						
MAIN F JMP TIME Meter ME 432-8003-0001			X			Calibration period, 13 weeks
SERVICE PUMP TIME Meter ME 432-8003-001			X			Calibration period, 13 weeks
<u>FLUID MONITOR PANEL</u>						
RETURN FLOW INDICATOR ME 284-0058-0002	X					Operating limits: 1. 5, 00 hours over a 5-year period with normal maintenance 2. 3, 000 hours over a 3-year period without normal maintenance
RESERVOIR FLUID LEVEL INDICATOR ME 432-8000-0001			X			Calibration period, 8 weeks
BY-PASS FLOW ME 284-0058-0002	X					Operating limits: 1. 5, 000 hours over a 5-year period with normal maintenance 2. 3, 000 hours over a 3-year period without normal maintenance

Table 8-2. C7-601 Console, Hydraulic Power, Components (Cont)

Component Nomenclature	Limits					Inspection Requirements
	Operating	Replacement	Calibration	Shelf Life	Damage	
MAIN PUMP SUCTION PRESSURE GAGE G3PG1						Calibration period, 8 weeks
<u>MONITOR PANEL</u>						
FLOW RATE INDICATOR G3M1 ME432- 8001-0002			X			Calibration period, 13 weeks
OIL TEMPERATURE INDICATOR DS-11						
SUPPLY PRESSURE GAGE G3PG2 ME289- 8000-0001	X					Operating limits: 1. 10,000 operational hours with normal maintenance over a 5-year period 2. 6,000 operational hours over a 3-year period with no maintenance other than periodic calibration
			X			Calibration period, 8 weeks

Table 8-2. C7-601 Console, Hydraulic Power, Components, (Cont)

Component Nomenclature	Limits					Inspection Requirements
	Operating	Replacement	Calibration	Shelf Life	Damage	
RETURN PRESSURE GAGE G3PG3 ME289- 8000-0062	X		X			<p>Operating limits:</p> <ol style="list-style-type: none"> 1. 10,000 operational hours with normal maintenance over a 5-year period. 2. 6,000 operational hours over a 3-year period with no maintenance other than periodic calibration <p>Calibration period, 8 weeks</p>

Table 8-3. C7-603 Console Set, Pneumatic Checkout

Equipment Nomenclature	Type of Inspection						Inspection Requirements
	Receiving	Daily	Periodic	Special	Shipping	Storage	
C7-603 Console Set, Pneumatic Checkout	X						Visual inspection for evidence of physical damage due to shipping or storage.
	X						Calibrate and adjust in accordance with SM-S-II-11 Mechanical Checkout Station Maintenance Manual
	X						Functional checkout in accordance with instructions in SM-S-II-11 Mechanical Checkout Station Maintenance Manual
		X					Visually inspect for: 1. Evidence of physical damage 2. All electrical and service receptacles not in use properly capped and protected against contamination
					X		Functional checkout of associated functions when any component is replaced
				X			Service in accordance with SM-S-II-11 Mechanical Checkout Station Maintenance Manual

Table 8-3. C7-603 Console Set, Pneumatic Checkout (Cont)

Equipment Nomenclature	Type of Inspection						Inspection Requirements
	Receiving	Daily	Periodic	Special	Shipping	Storage	
C7-603 Console Set, Pneumatic Checkout				X	X		Package for shipment or storage in accordance with MSFC Drawing 10509302
				X	X		Mark for shipment or storage in accordance with Specification MIL-STD-129

Table 8-4. C7-605 Console Set, Pneumatic Servicing

Equipment Nomenclature	Type of Inspection						Inspection Requirements
	Receiving	Daily	Periodic	Special	Shipping	Storage	
C7-605 Console Set, Pneumatic Servicing	X						Visual inspection for evidence of physical damage due to shipping or storage
	X						Calibrate and adjust in accordance with SM-S-II-11 Mechanical Checkout Station Maintenance Manual
	X						Functional checkout in accordance with instructions in SM-S-II-11 Mechanical Checkout Station Maintenance Manual
		X					Visually inspect for: 1. Evidence of physical damage 2. All electrical and servicing receptacles not in use properly capped and protected against contaminants
				X			Functional checkout of associated function when any component is replaced.
		X				Service in accordance with SM-S-II-11 Mechanical Checkout Station Maintenance Manual	

Table 8-4. C7-605 Console Set, Pneumatic Servicing (Cont)

Equipment Nomenclature	Type of Inspection						Inspection Requirements
	Receiving	Daily	Periodic	Special	Shipping	Storage	
C7-605 Console Set, Pneumatic Servicing					X	X	Package for shipment or storage in accordance with MSFC Drawing 10509302
					X	X	Mark for shipment or storage in accordance with Specification MIL-STD-129

Table 8-5. C7-605 Console Set, Pneumatic Servicing, Components

Component Nomenclature	Limits					Inspection Requirements
	Operating	Replacement	Calibration	Shelf Life	Damage	
<u>PRESS AND PURGE N, H, AND He PANEL</u>						
GHe PURGE AND ABN PRESS. SUP. (G4PG7) ME 289-0011-0003			X			Calibration period, 8 weeks
ENG. GH ₂ BOTTLE PRESS. SUB. (G4PG8) ME 289-0011-0003			X			Calibration period, 8 weeks
HIGH SUB. (G4PG5) ME 289-0001-0006			X			Calibration period, 8 weeks
LOW SUP. (G4PG6) ME 289-0001-0003			X			Calibration period, 8 weeks
<u>He AND GN₂ SUPPLY PRESS. PANEL</u>						
4500 PSIG AMB. TEMP. He PRESS. (G4PG10) ME 289-0011-0005			X			Calibration period, 8 weeks
INSTRUMENT GN ₂ (G4PG12) ME 289-0001-0003			X			Calibration period, 8 weeks
4500 PSIG LOW TEMP He PRESS (G4PG11) ME 289-0011-0005			X			Calibration period, 8 weeks

Table 8-5. C7-605 Console Set, Pneumatic Servicing, Components (Cont)

Component Nomenclature	Limits					Inspection Requirements
	Operating	Replacement	Calibration	Shelf Life	Damage	
<u>PROPELLANT TANK PRESSURIZATION SUPPLY PANEL</u>						
<u>GHe SUPPLY PRESSURE (P62) ME 289-0011-0005</u>			X			Calibration period, 8 weeks
<u>GH₂ SUPPLY PRESSURE (P69) ME 289-0011-0005</u>			X			Calibration period, 8 weeks
<u>GN₂ SUPPLY PRESSURE (P63) ME 289-0011-0005</u>			X			Calibration period, 8 weeks

SECTION IX
HANDLING EQUIPMENT

9-1. GENERAL.

9-2. This section contains tables listing the inspection requirements, and component limitations necessary to maintain the handling equipment which supports the Saturn S-II stage.

9-3. The first table on each piece of equipment lists equipment breakdown, type of inspection, and inspection requirements. The inspection requirements prescribed by this manual are stated in a manner which establishes what conditions are to be sought. It does not contain instructions for repair, adjustment, or other means of rectifying defective conditions.

9-4. The second table lists the equipment components and the operating, replacement, calibration, shelf life, and damage limitations. This table will be included only for the pieces of equipment to which it applies.

9-5. All equipment is listed in numerical model number sequence to assist in easier location of any particular piece of equipment. The periods designated in this manual for accomplishment of the various inspection requirements are the maximum time periods allowed. When abnormal conditions dictate, the frequency and/or scope of inspection should be increased as required.

Table 9-1. H7-1 Pallet, S-II Stage

Equipment Nomenclature	Type of Inspection						Inspection Requirements
	Receiving	Prior to Use	Periodic	Special	Shipping	Storage	
H7-1 Pallet, S-II Stage	X	X					Inspect pallet and cradle assemblies for physical damage
Pallet structure	X	X					Security of pallet structure and structural fasteners
Forward cradle assembly	X	X					Security of forward cradle assembly attachment to pallet
Forward equalizing rollers	X	X					Security of equalizing rollers attachment to forward cradle assembly
	X						Freedom of movement of forward equalizing rollers
Forward tie-down brackets	X	X					Security of tie-down bracket attachments to forward cradle assembly
Aft cradle assembly							Security of aft cradle assembly attachment to pallet
Aft equalizing rollers	X	X					Security of equalizing rollers attachment to aft cradle assembly
Aft equalizing rollers	X	X					Freedom of movement of aft equalizing rollers
Aft tie-down brackets	X	X					Security of tie-down brackets attachment to aft cradle assembly

Table 9-1. H7-1 Pallet, S-II Stage (Cont)

Equipment Nomenclature	Type of Inspection						Inspection Requirements
	Receiving	Prior to Use	Periodic	Special	Shipping	Storage	
Friction drive mechanism	X	X					Security of friction drive mechanism attachment to aft cradle assembly
Mechanical locking device	X	X					Security of positive mechanical locking device attachment to aft cradle assembly

Table 9-2. H7-2 Ring, Forward, Stage Support

Equipment Nomenclature	Type of Inspection						Inspection Requirements
	Receiving	Prior to Use	Periodic	Special	Shipping	Storage	
H7-2 Ring, Forward, Stage Support	X	X					Inspect complete ring assembly for physical damage
	X	X					Outer periphery of ring free of rotation obstructions
Splice plates	X	X					Security of attachment to ring segments
Adapters	X	X					Security of attachment to ring segments
Eyebolts	X	X					Security of attachment to ring segments

Table 9-3. H7-3 Ring, Aft. Stage Support

Equipment Nomenclature	Type of Inspection						Inspection Requirements
	Receiving	Prior to Use	Periodic	Special	Shipping	Storage	
H7-3 Ring, Aft, Stage Support	X	X					Inspect complete ring assembly for physical damage
	X	X					Outer periphery of ring free of rotation obstructions
Splice plates	X	X					Security of attachment to ring segments
Trunnion fittings	X	X					Security of attachment to ring segments
Alignment fittings	X	X					Security of attachment to ring segments

Table 9-4. H7-4 Truck, Transporter, Forward

Equipment Nomenclature	Type of Inspection						Inspection Requirements
	Receiving	Prior to Use	Periodic	Special	Shipping	Storage	
H7-4 Truck, Transporter, Forward	X	X					Inspect complete truck assembly for physical damage
Suspension system	X	X					Security of installation
Axle assembly	X	X					Security of installation
Wheel assemblies	X	X					Security of installation
	X	X					Freedom of wheel movement
Load equalizing system	X	X					Security of installation
Brake system	X	X					Security of installation
Power steering system	X	X					Security of installation

Table 9-5. H7-5 Truck, Transporter, Aft

Equipment Nomenclature	Type of Inspection						Inspection Requirements
	Receiving	Prior to Use	Periodic	Special	Shipping	Storage	
H7-5 Truck, Transport, Aft	X	X					Inspect complete truck assembly for physical damage
Suspension system	X	X					Security of installation
Axle assembly	X	X					Security of installation
Wheel assemblies	X	X					Security of installation
	X	X					Freedom of wheel movement
Load equalizing system	X	X					Security of installation
Brake system	X	X					Security of installation
Power steering system	X	X					Security of installation
Fifth wheel assembly	X	X					Security of installation

Table 9-6. H7-8 Dolly, Aft Interstage

Equipment Nomenclature	Type of Inspection						Inspection Requirements
	Receiving	Prior to Use	Periodic	Special	Shipping	Storage	
H7-8 Dolly, Aft Interstage	X	X					Inspect complete dolly assembly for physical damage
	X	X					Security of dolly structure and structural fasteners
Suspension system	X	X					Security of installation
Axle assembly	X	X					Security of installation
Wheel assemblies	X	X					Security of installation
	X	X					Freedom of wheel movement
Support fittings	X	X					Security of installation

Table 9-7. H7-9 Cover, Stage Front

Equipment Nomenclature	Type of Inspection						Inspection Requirements
	Receiving	Prior to Use	Periodic	Special	Shipping	Storage	
H7-9 Cover, Stage Front	X	X					Inspect complete cover assembly for physical damage
	X	X					Inspect cover seams for frayed or broken stitches
Cover fasteners	X	X					Security of installation

Table 9-8. H7-10 Cover, Forward Body, Stage

Equipment Nomenclature	Type of Inspection						Inspection Requirements
	Receiving	Prior to Use	Periodic	Special	Shipping	Storage	
H7-10 Cover, Forward Body, Stage	X	X					Inspect complete cover for physical damage
	X	X					Inspect cover seams for frayed or broken stitches
Cover fasteners	X	X					Security of installation

Table 9-9. H7-11 Cover, Mid-body, Stage

Equipment Nomenclature	Type of Inspection						Inspection Requirements
	Receiving	Prior to Use	Periodic	Special	Shipping	Storage	
H7-11 Cover, Mid-body, Stage	X	X					Inspect complete cover for physical damage
	X	X					Inspect cover seams for frayed or broken stitches
Cover fasteners	X	X					Security of installation

Table 9-10. H7-12 Cover, Aft Body, Stage

Equipment Nomenclature	Type of Inspection						Inspection Requirements
	Receiving	Prior to Use	Periodic	Special	Shipping	Storage	
H7-12 Cover, Aft Body, Stage	X	X					Inspect complete cover for physical damage
	X	X					Inspect cover seams for frayed or broken stitches
Cover fasteners	X	X					Security of installation

Table 9-11. H7-13 Cover, Aft Interstage

Equipment Nomenclature	Type of Inspection						Inspection Requirements
	Receiving	Prior to Use	Periodic	Special	Shipping	Storage	
H7-13 Cover, Aft Interstage	X	X					Inspect complete cover for physical damage
	X	X					Inspect cover seams for frayed or broken stitches
Cover fasteners	X	X					Security of installation

Table 9-12. H7-14 Cover, Stage Aft

Equipment Nomenclature	Type of Inspection						Inspection Requirements
	Receiving	Prior to Use	Periodic	Special	Shipping	Storage	
H7-14 Cover, Stage Aft	X	X					Inspect complete cover for physical damage
	X	X					Inspect cover seams for frayed or broken stitches
Cover fasteners	X	X					Security of installation

Table 9-13. H7-15 Roller Mechanism, Stage Body Covers

Equipment Nomenclature	Type of Inspection						Inspection Requirements
	Receiving	Prior to Use	Periodic	Special	Shipping	Storage	
H7-15 Roller Mechanism, Stage Body Covers	X	X					Inspect roller mechanism for physical damage
	X	X					Security of support structure and support structure attachment fasteners
Caster assemblies	X	X					Security of installation
Power head assembly	X	X					Security of installation
Electrical receptacles	X				X	X	Exposed electrical receptacles protected against damage and contamination

Table 9-14. H7-16 Spool, Roller Mechanism, Stage Body Covers

Equipment Nomenclature	Type of Inspection						Inspection Requirements
	Receiving	Prior to Use	Periodic	Special	Shipping	Storage	
H7-16 Spool, Roller Mechanism, Stage Body Covers	X	X					Inspect spool for physical damage
	X	X					Security of spool structures and structural fasteners

Table 9-15. H7-17 Fixture, Stage Fit-Up

Equipment Nomenclature	Type of Inspection						Inspection Requirements
	Receiving	Prior to Use	Periodic	Special	Shipping	Storage	
H7-17 Fixture, Stage Fit-Up	X	X					Inspect fixture for physical damage
	X	X					Security of fixture structure and structural fasteners

Table 9-16. H7-18 Illumination Set, Transport

Equipment Nomenclature	Type of Inspection						Inspection Requirements
	Receiving	Prior to Use	Periodic	Special	Shipping	Storage	
H7-18 Illumination Set, Transport	X	X					Inspect complete illumination set for physical damage
Floodlights	X	X					Security of positioning clamp installation
	X				X	X	Electrical receptacles protected against damage and contamination
Interconnecting cables	X				X	X	Electrical receptacles protected against damage and contamination

Table 9-17. H7-19 Lock No. 1, Actuator, Engine

Equipment Nomenclature	Type of Inspection						Inspection Requirements
	Receiving	Prior to Use	Periodic	Special	Shipping	Storage	
H7-19 Lock No. 1, Actuator, Engine	X	X					Inspect complete actuator lock assembly for physical damage
	X	X					Security of clamping ring retaining nut
	X	X					Security of clamping ring snap fastener

Table 9-18. H7-20 Simulator, Actuator, Engine

Equipment Nomenclature	Type of Inspection						Inspection Requirements
	Receiving	Prior to Use	Periodic	Special	Shipping	Storage	
H7-20 Simulator, Actuator, Engine	X	X					Inspect complete actuator simulator assembly for physical damage
Clevis rod ends	X	X					Security of installation

Table 9-19. H7-21 Skirt, Static Firing

Equipment Nomenclature	Type of Inspection						Inspection Requirements
	Receiving	Prior to Use	Periodic	Special	Shipping	Storage	
H7-21 Skirt, Static Firing	X	X					Inspect complete skirt assembly for physical damage
	X	X					Security of skirt structure and structural fasteners
Access doors	X	X					Security of installation
				X			Subsequent to static firings, inspect complete skirt structure for physical damage

Table 9-20. H7-23 Sling, Stage Erecting

Equipment Nomenclature	Type of Inspection						Inspection Requirements
	Receiving	Prior to Use	Periodic	Special	Shipping	Storage	
H7-23 Sling, Stage Erecting	X	X					Inspect complete sling assembly for physical damage
	X	X					Security of structure and structural fasteners
Yoke assembly	X	X					Security of installation
	X	X					Freedom of yoke assembly swivel action
Adapter assembly	X	X					Security of installation
	X	X					Freedom of adapter movement

Table 9-21. H7-24 Frame, Hoisting, Forward

Equipment Nomenclature	Type of Inspection						Inspection Requirements
	Receiving	Prior to Use	Periodic	Special	Shipping	Storage	
H7-24 Frame, Hoisting, Forward	X	X					Inspect complete frame assembly for physical damage
	X	X					Valid indication of proofloading
Splice plates	X	X					Security of installation
Link eyes	X	X					Security of installation
Frame segments	X	X					Security of installation

Table 9-22. H7-25 Frame, Hoisting, Aft

Equipment Nomenclature	Type of Inspection						Inspection Requirements
	Receiving	Prior to Use	Periodic	Special	Shipping	Storage	
H7-25 Frame, Hoisting Aft	X	X					Inspect complete frame assembly for physical damage
	X	X					Security of structure and structural fasteners
	X	X					Valid indication of proof loading
Caster assemblies	X	X					Security of installation
	X	X					Freedom of caster movement
Link assembly	X	X					Security of installation
	X	X					Freedom of movement

Table 9-23. H7-27 Sling, Interstage and Static Firing Skirt Segment

Equipment Nomenclature	Type of Inspection						Inspection Requirements
	Receiving	Prior to Use	Periodic	Special	Shipping	Storage	
H7-27 Sling, Inter- stage and Static Firing Skirt Segment	X	X					Inspect complete sling assembly for physical damage
	X	X					Valid indication of proof loading
Cables	X	X					Security of installation
Hoisting link	X	X					Security of installation
Hook eyes	X	X					Security of installation

Table 9-24. H7-28 Sling, Ring Segment, Support

Equipment Nomenclature	Type of Inspection						Inspection Requirements
	Receiving	Prior to Use	Periodic	Special	Shipping	Storage	
H7-28 Sling, Ring Segment, Support	X	X					Inspect complete sling assembly for physical damage
Cables	X	X					Valid indication of proof loading
Hoisting link	X	X					Security of installation
Hook eyes	X	X					Security of installation

Table 9-25. H7-29 Adapter Set, Tag Lines

Equipment Nomenclature	Type of Inspection						Inspection Requirements
	Receiving	Prior to Use	Periodic	Special	Shipping	Storage	
H7-29 Adapter Set, Tag Lines	X	X					Inspect complete adapter set for physical damage
	X	X					Valid indication of proof loading

Table 9-26. H7-30 Sling, Interstage And Static Firing Skirt

Equipment Nomenclature	Type of Inspection						Inspection Requirements
	Receiving	Prior to Use	Periodic	Special	Shipping	Storage	
H7-30 Sling, Inter-stage and Static Firing Skirt	X	X					Inspect complete sling assembly for physical damage
	X	X					Valid indication of proof loading
Cables	X	X					Security of installation
Hoisting link	X	X					Security of installation
Hook eyes	X	X					Security of installation

Table 9-27. I17-32 Sling, Ullage Rocket

Equipment Nomenclature	Type of Inspection						Inspection Requirements
	Receiving	Prior to Use	Periodic	Special	Shipping	Storage	
I17-32 Sling, Ullage Rocket	X	X					Inspect complete sling assembly for physical damage
	X	X					Valid indication of proof loading
Cables	X	X					Security of installation
Hoisting link	X	X					Security of installation
Hook eyes	X	X					Security of installation

Table 9-28. H7-35 Support Adapter, Ullage Rocket

Equipment Nomenclature	Type of Inspection						Inspection Requirements
	Receiving	Prior to Use	Periodic	Special	Shipping	Storage	
H7-35 Support Adapter, Ullage Rocket	X	X					Inspect complete adapter assembly for physical damage
	X	X					Security of structure and structural fasteners
Roller assemblies	X	X					Security of installation
	X	X					Freedom of roller movement
Retaining straps	X	X					Security of installation
	X	X					Security of retaining straps locking devices

Table 9-29. H7-71 Manipulator, Engine Component

Equipment Nomenclature	Type of Inspection						Inspection Requirements
	Receiving	Prior to Use	Periodic	Special	Shipping	Storage	
H7-71 Manipulator, Engine Component	X	X					Inspect complete manipulator assembly for physical damage

Table 9-30. H7-72 Frame, Engine Protective

Equipment Nomenclature	Type of Inspection						Inspection Requirements
	Receiving	Prior to Use	Periodic	Special	Shipping	Storage	
H7-72 Frame, Engine Protective	X	X					Inspect complete frame assembly for physical damage.
	X	X					Security of structure and structural fasteners

Table 9-31. H7-73 Sling, Engine Protective Frame

Equipment Nomenclature	Type of Inspection						Inspection Requirements
	Receiving	Prior to Use	Periodic	Special	Shipping	Storage	
H7-73 Sling, Engine Protective Frame	X	X					Inspect complete sling assembly for physical damage
	X	X					Valid indication of proof loading
Cables	X	X					Security of installation
Hoisting link	X	X					Security of installation
Hook eyes	X	X					Security of installation

Table 9.32. H7-76 Sling, Attitude Control, Engine Protective Frame

Equipment Nomenclature	Type of Inspection						Inspection Requirements
	Receiving	Prior to Use	Periodic	Special	Shipping	Storage	
H7-76 Sling, Attitude Control, Engine Protective Frame	X	X					Inspect complete sling assembly for physical damage
	X	X					Security of structure and structural fasteners
	X	X					Valid indication of proof loading
Cables	X	X					Security of installation
Hook eyes	X	X					Security of installation

Table 9-33. H7-77 Sling, Segment, Engine Protective Frame

Equipment Nomenclature	Type of Inspection						Inspection Requirements
	Receiving	Prior to Use	Periodic	Special	Shipping	Storage	
H7-77 Sling, Segment Engine Protective Frame	X	X					Inspect complete sling assembly for physical damage
	X	X					Valid indication of proof loading
Cables	X	X					Security of installation
Hook eyes	X	X					Security of installation

Table 9-34. H7-78 Sling, Access Ladder, Aft Hoisting Frame

Equipment. Nomenclature	Type of Inspection						Inspection Requirements
	Receiving	Prior to Use	Periodic	Special	Shipping	Storage	
H7-78 Sling, Access Ladder, Aft Hoisting Frame	X	X					Inspect complete sling assembly for physical damage
	X	X					Valid indication of proof loading

Table 9-35. H7-79 Bracket Set, Stage Guide

Equipment Nomenclature	Type of Inspection						Inspection Requirements
	Receiving	Prior to Use	Periodic	Special	Shipping	Storage	
H7-79 Bracket Set, Stage Guide	X	X					Inspect complete bracket set for physical damage

Table 9-36. H7-81 Fixture, Holding, Forward Hoisting Frame

Equipment Nomenclature	Type of Inspection						Inspection Requirements
	Receiving	Prior to Use	Periodic	Special	Shipping	Storage	
H7-81 Fixture, Holding, Forward Hoisting Frame	X	X					Inspect complete fixture assembly for physical damage
	X	X					Security of structure assembly and structural fasteners
Caster assemblies	X	X					Freedom of movement of caster height adjusting screws
	X	X					Freedom of caster movement

Table 9-37. H7-83. Sling, Transporter Components

Equipment Nomenclature	Type of Inspection						Inspection Requirements
	Receiving	Prior to Use	Periodic	Special	Shipping	Storage	
H7-83 Sling, transporter components	X	X					Inspect complete sling assembly for physical damage.
	X	X					Valid indication of proof loading.

Table 9-38. H7-86 Spacer, Stage Checkout Dolly

Equipment Nomenclature	Type of Inspection						Inspection Requirements
	Receiving	Prior to Use	Periodic	Special	Shipping	Storage	
H7-86 Spacer, stage checkout dolly	X	X					Inspect complete spacer assembly for physical damage.
	X	X					Security of structure assembly and structural fasteners.

Table 9-39. H7-87 Sling, Spacer, Stage Checkout Dolly

Equipment Nomenclature	Type of Inspection						Inspection Requirements
	Receiving	Prior to Use	Periodic	Special	Shipping	Storage	
H7-87 Sling, spacer, stage checkout dolly	X	X					Inspect complete sling assembly for physical damage.
	X	X					Security of structural assembly and structural fasteners.
	X	X					Valid indication of proof loading.
Hoisting link	X	X					Security of installation.
Hook eyes	X	X					Security of installation.

Table 9-40. H7-89 Lock No. 2, Actuator, Engine

Equipment Nomenclature	Type of Inspection						Inspection Requirements
	Receiving	Daily	Periodic	Special	Shipping	Storage	
H7-89 Lock No. 2, actuator, engine	X	X					Inspect complete actuator lock assembly for physical damage.
	X	X					Security of clamping ring retaining nut.
	X	X					Security of clamping ring snap fastener

Table 9-41. H7-92 Ring, Forward Support, Interstage

Equipment Nomenclature	Type of Inspection						Inspection Requirements
	Receiving	Prior to Use	Periodic	Special	Shipping	Storage	
H7-92 Ring, forward support, interstage	X	X					Inspect complete support ring assembly for physical damage.
	X	X					Security of structural assembly and structural fasteners.

Table 9-42. H7-93 Ring, Aft Support, Interstage

Equipment Nonenclature	Type of Inspection						Inspection Requirements
	Receiving	Prior to Use	Periodic	Special	Shipping	Storage	
H7-93 Ring, aft support, interstage	X	X					Inspect complete support ring assembly for physical damage.
	X	X					Security of structural assembly and structural fasteners.

Table 9-43. H7-101 Pallet, Interstate, S-II Stage

Equipment Nomenclature	Type of Inspection						Inspection Requirements
	Receiving	Prior to Use	Periodic	Special	Shipping	Storage	
H7-101 Pallet, interstate, S-II Stage	X	X					Inspect pallet and cradle assemblies for physical damage.
Pallet structure	X	X					Security of pallet structure and structural fasteners.
Forward cradle assembly	X	X					Security of forward cradle assembly attachment to pallet structure.
Forward equalizing rollers	X	X					Security of equalizing rollers attachment to forward cradle assembly.
	X	X					Freedom of movement of forward equalizing rollers.
Forward tie-down brackets	X	X					Security of tie-down bracket attachment to forward cradle assembly.
Aft cradle assembly	X	X					Security of aft cradle assembly attachment to pallet structure.
Aft equalizing rollers	X	X					Security of equalizing rollers attachment to aft cradle assembly.
	X	X					Freedom of movement of aft cradle assembly equalizing rollers.
Aft tie-down brackets	X	X					Security of tie-down brackets attachment to aft cradle assembly.
Friction drive mechanism	X	X					Security of friction drive mechanism attachment to aft cradle assembly.
Mechanical locking device	X	X					Security of positive mechanical locking device attachment to aft cradle assembly.

Table 9-44. H7-104 Truck, Forward, Interstate Transporter

Equipment Nomenclature	Type of Inspection						Inspection Requirements
	Receiving	Prior to Use	Periodic	Special	Shipping	Storage	
H7-104 Truck, forward, interstate transporter	X	X					Inspect complete truck assembly for physical damage.
Suspension system	X	X					Security of installation.
Axle assembly	X	X					Security of installation.
Wheel assemblies	X	X					Security of installation.
	X	X					Freedom of wheel movement.
Load equalizing system	X	X					Security of installation.
Brake system	X	X					Security of installation.
Power steering system	X	X					Security of installation.

Table 9-45. H7-105 Truck, Aft, Interstate Transporter

Equipment Nomenclature	Type of Inspection						Inspection Requirements
	Receiving	Prior to Use	Periodic	Special	Shipping	Storage	
H7-105 Truck, Aft interstate transporter	X	X					Inspect complete truck assembly for physical damage.
Suspension system	X	X					Security of installation.
Axle assembly	X	X					Security of installation.
Wheel assemblies	X	X					Security of installation.
	X	X					Freedom of wheel movement.
Load equalizing system	X	X					Security of installation.
Brake system	X	X					Security of installation.
Power steering system	X	X					Security of installation.

SECTION X

SERVICING EQUIPMENT

10-1. GENERAL.

10-2. This section contains tables listing the inspection requirements, and component limitations necessary to maintain the servicing equipment which supports the Saturn S-II stage.

10-3. The first table on each piece of equipment lists equipment breakdown, type of inspection, and inspection requirements. The inspection requirements prescribed by this manual are stated in a manner which establishes what conditions are to be sought. It does not contain instructions for repair, adjustment, or other means of rectifying defective conditions.

10-4. The second table lists the equipment components and the operating, replacement, calibration, shelf life, and damage limitations. This table will be included only for the pieces of equipment to which it applies.

10-5. All equipment is listed numerical model number sequence to assist in easier location of any particular piece of equipment. The periods designated in this manual for accomplishment of the various inspection requirements are the maximum time periods allowed. When abnormal conditions dictate, the frequency and/or scope of inspection should be increased as required.

Table 10-1. S7-3 Desiccation System, LH₂ Tank

Equipment Nomenclature	Type of Inspection						Inspection Requirements
	Receiving	Daily	Periodic	Special	Shipping	Storage	
S7-3 Desiccation System, LH ₂ Tank	X						Visually inspect for evidence of physical damage due to shipping or storage
	X						Prepare for use in accordance with SM-S-II-17 Servicing Equipment Maintenance Manual
	X						Operational checkout in accordance with instructions in SM-S-II-17 Servicing Equipment Maintenance Manual
		X					Visually inspect for 1. Freedom from physical damage 2. Freedom from contaminants
				X			Functional checkout of complete unit when any component is replaced
					X	X	Prepare for shipping or storage in accordance with SM-S-II-17 Servicing Equipment Maintenance Manual

Table 10-2. S7-4 Desiccation System, LOX Tank

Equipment Nomenclature	Type of Inspection						Inspection Requirements
	Receiving	Daily	Periodic	Special	Shipping	Storage	
S7-4 Desiccation System, LOX Tank	X						Visually inspect for evidence of physical damage due to shipping or storage
	X						Prepare for use in accordance with SM-S-II-17 Servicing Equipment Maintenance Manual
	X						Operational checkout in accordance with instructions in SM-S-II-17 Servicing Equipment Maintenance Manual
		X					Visually inspect for 1. Freedom from physical damage 2. Freedom from contaminants
				X			Functional checkout of complete unit when any component is replaced
					X	X	Prepare for shipping or storage in accordance with SM-S-II-17 Servicing Equipment Maintenance Manual

Table 10-3. S7-5 Desiccation System, Extended Storage

Equipment Nomenclature	Type of Inspection						Inspection Requirements
	Receiving	Daily	Periodic	Special	Shipping	Storage	
S7-5 Desiccation System, Extended Storage	X						Visually inspect for evidence of physical damage due to shipping or storage
	X						Prepare for use in accordance with SM-S-II-17 Servicing Equipment Maintenance Manual
	X						Operational checkout in accordance with instructions in SM-S-II-17 Servicing Equipment Maintenance Manual
		X					Visually inspect for 1. Freedom from physical damage 2. Freedom from contaminants
				X			Functional checkout of complete unit when any component is replaced
					X	X	Prepare for shipping or storage in accordance with SM-S-II-17 Servicing Equipment Maintenance Manual

Table 10-4. S7-6 Servicing Unit, Hydraulic Fluid

Equipment Nomenclature	Type of Inspection						Inspection Requirements
	Receiving	Daily	Periodic	Special	Shipping	Storage	
S7-6 Servicing Unit, Hydraulic Fluid	X						Visually inspect for evidence of physical damage due to shipping or storage
	X						Calibrate and adjust in accordance with SM-S-II-17 Servicing Equipment Maintenance Manual
	X						Operational checkout in accordance with instructions in SM-S-II-17 Servicing Equipment Maintenance Manual
		X					Visually inspect for 1. Evidence of physical damage 2. Freedom from contaminants 3. Freedom from hydraulic leaks 4. All electrical and service receptacles not in use properly capped and protected against contaminants
			X				Functional checkout of complete unit when any component is replaced

Table 10-4. S7-6 Servicing Unit, Hydraulic Fluid (Cont)

Equipment Nomenclature	Type of Inspection						Inspection Requirements
	Receiving	Daily	Periodic	Special	Shipping	Storage	
S7-6 Servicing Unit, Hydraulic Fluid	X		X				Perform hydraulic fluid contamination level check as specified in SM-S-II-17 Servicing Equipment Maintenance Manual
					X	X	Prepare for shipping or storage in accordance with instructions in SM-S-II-17 Servicing Equipment Maintenance Manual

Table 10-5. S7-6 Servicing Unit, Hydraulic Fluid, Components

Component Nomenclature	Limits					Inspection Requirements
	Operating	Replacement	Calibration	Shelf Life	Damage	
<u>CONSOLE MONITOR PANEL</u>						
RESERVOIR LEVEL INDICATOR G3IG1 ME106-0009	X		X			Calibration period, 90 days Operating limits: 1. 5,000 operational cycles, over a 5-year period with normal maintenance 2. 3,000 operational cycles over a 3-year period without repair
PRESSURE Gage G3PG1 ME289-0001			X			Calibration period, 90 days
RETURN FLOW INDICATOR G3FM1	X					Operating limits: 1. 5,000 hours over a 5-year period with normal maintenance 2. 3,000 hours over a 3-year period without repair
CIRCUIT BREAKER-ELAPSED TIME PANEL						
ELAPSED TIME METER M1 ME432-0011			X			Calibration period, 90 days

Table 10-6. S7-10 Jumper Unit, Hydraulic System

Equipment Nomenclature	Type of Inspection						Inspection Requirements
	Receiving	Daily	Periodic	Special	Shipping	Storage	
S7-10 Jumper Unit, Hydraulic System	X						Visually inspect for evidence of physical damage due to shipping or storage
	X						Prepare for use in accordance with instructions in SM-S-II-17 Servicing Equipment Maintenance Manual
		X					Visually inspect for 1. Evidence of physical damage 2. Freedom from contaminants 3. Freedom from hydraulic leaks 4. All service receptacles not in use properly capped and protected against contaminants
				X			Functional checkout of complete unit when any component is replaced
				X	X		Prepare for shipping or storage in accordance with instructions in SM-S-II-17 Servicing Equipment Maintenance Manual

Table 10-7. S7-10 Jumper Unit, Hydraulic System, Components

Component Nomenclature	Limits					Inspection Requirements
	Operating	Replacement	Calibration	Shelf Life	Damage	
RETURN PRESSURE Gage G3PG1			X			Calibration period, 90 days
SUPPLY PRESSURE Gage G3PG2			X			Calibration period, 90 days

Table 10-8. S7-13 Fluid Distribution System, Staging Area

Equipment Nomenclature	Type of Inspection						Inspection Requirements
	Receiving	Daily	Periodic	Special	Shipping	Storage	
S7-13 Fluid Distribution System, Staging Area	X						Visually inspect for evidence of physical damage due to shipping or storage
	X						Prepare for use in accordance with instructions in SM-S-II-17 Servicing Equipment Maintenance Manual
		X					Visually inspect for <ol style="list-style-type: none"> 1. Evidence of physical damage 2. Freedom from contaminants 3. Freedom from pneumatic or hydraulic fluid leakage 4. All service receptacles not in use properly capped and protected against contaminants
				X			Functional checkout of complete unit when any component is replaced
					X	X	Prepare for shipping or storage in accordance with instructions in SM-S-II-17 Servicing Equipment Maintenance Manual

Table 10-9: S7-27 Fluid Distribution System, Acceptance Stand No. 1

Equipment Nomenclature	Type of Inspection						Inspection Requirements
	Receiving	Daily	Periodic	Special	Shipping	Storage	
S7-27 Fluid Distribution System, Acceptance Stand No. 1	X						Visually inspect for evidence of physical damage due to shipping or storage
	X						Prepare for use in accordance with instructions in SM-S-II-17 Servicing Equipment Maintenance Manual
		X					Visually inspect for 1. Evidence of physical damage 2. Freedom from contaminants 3. Freedom from pneumatic or hydraulic fluid leakage 4. All service receptacles not in use properly capped and protected against contaminants
				X			Functional checkout of complete unit when any component is replaced
					X	X	Prepare for shipping or storage in accordance with instructions in SM-S-II-17 Servicing Equipment Maintenance Manual

Table 10-10. S7-33 Fluid Distribution System, Acceptance Stand No. 2

Equipment Nomenclature	Type of Inspection						Inspection Requirements
	Receiving	Daily	Periodic	Special	Shipping	Storage	
S7-33 Fluid Distribution System, Acceptance Stand No. 2	X						Visually inspect for evidence of physical damage due to shipping or storage
	X						Prepare for use in accordance with instructions in SM-S-II-17 Servicing Equipment Maintenance Manual
		X					Visually inspect for 1. Evidence of physical damage 2. Freedom from contaminants 3. Freedom from pneumatic or hydraulic fluid leakage 4. All service receptacles not in use properly capped and protected against contaminants
				X			Functional checkout of complete unit when any component is replaced
					X	X	Prepare for shipping or storage in accordance with instructions in SM-S-II-17 Servicing Equipment Maintenance Manual

Table 10-11. S7-34 Air Servicing Unit, Electrical Container

Equipment Nomenclature	Type of Inspection						Inspection Requirements
	Receiving	Daily	Periodic	Special	Shipping	Storage	
S7-34 Air Servicing Unit, Electrical Container	X						Visually inspect for evidence of physical damage due to shipping or storage
	X						Prepare for use in accordance with SM-S-II-17 Servicing Equipment Maintenance Manual
	X						Operational checkout in accordance with instructions in SM-S-II-17 Servicing Equipment Maintenance Manual
				X			Functional checkout of complete unit when any component is replaced
		X					All electrical and service receptacles not in use properly capped and protected against contaminants
				X	X		Prepare for shipping or storage in accordance with instructions in SM-S-II-17 Servicing Equipment Maintenance Manual

Table 10-12. S7-37 Pump Unit, Vacuum, Portable

Equipment Nomenclature	Type of Inspection						Inspection Requirements
	Receiving	Daily	Periodic	Special	Shipping	Storage	
S7-37 Pump Unit Vacuum, Portable	X						Inspect for evidence of physical damage due to shipping or storage.
	X						Prepare for use in accordance with SM-S-II-17 Servicing Equipment Maintenance Manual
	X						Operational checkout in accordance with instructions in SM-S-II-17 Servicing Equipment Maintenance Manual
		X					Visually inspect for 1. Freedom from physical damage 2. Freedom from contaminants 3. All electrical and service receptacles not in use properly capped and protected against contaminants
				X			Functional checkout of complete unit when any component is replaced
				X	X		Prepare for shipping or storage in accordance with instructions in SM-S-II-17 Servicing Equipment Maintenance Manual

Table 10-13. S7-38 Servicing Unit, Precharge, Hydraulic Accumulator

Equipment Nomenclature	Type of Inspection						Inspection Requirements
	Receiving	Daily	Periodic	Special	Shipping	Storage	
S7-38 Servicing Unit, Precharge, Hydraulic Accumulator	X						Visually inspect for evidence of physical damage due to shipping or storage.
	X						Prepare for use in accordance with SM-S-II-17 Servicing Equipment Maintenance Manual.
	X						Functional checkout in accordance with instructions in SM-S-II-17 Servicing Equipment Maintenance Manual.
				X			Functional checkout of complete unit when any component is replaced.
		X					All servicing receptacles not in use properly capped and protected against contaminants.
					X	X	Prepare for shipping or storage in accordance with instructions in SM-S-II-17 Servicing Equipment Maintenance Manual.

Table 10-14. 57-40 Servicing Unit, Nitrogen, Purge and Thermal Control

Equipment Nomenclature	Type of Inspection						Inspection Requirements
	Receiving	Daily	Periodic	Special	Shipping	Storage	
Servicing Unit, Nitrogen, Purge and Thermal Control	X						Visually inspect for evidence of physical damage due to shipping or storage
	X						Prepare for use in accordance with SM-S-II-17 Servicing Equipment Maintenance Manual
	X						Functional checkout in accordance with instructions in SM-S-II-17 Servicing Equipment Maintenance Manual
				X			Functional checkout of complete unit when any component is replaced
		X					All servicing receptacles not in use properly capped and protected against contaminants
					X	X	Prepare for shipping or storage in accordance with instructions in SM-S-II-17 Servicing Equipment Maintenance Manual