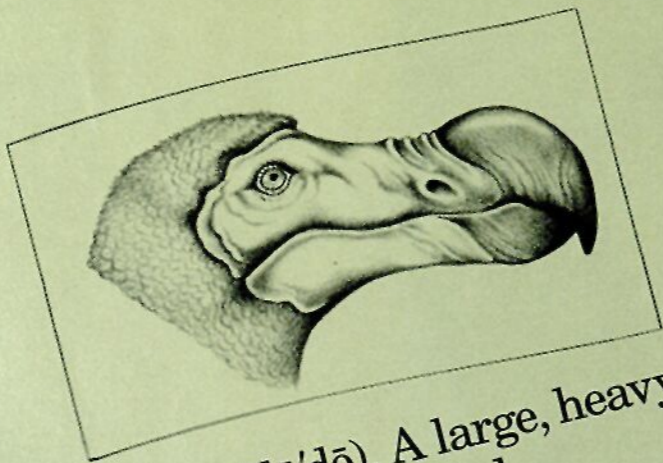
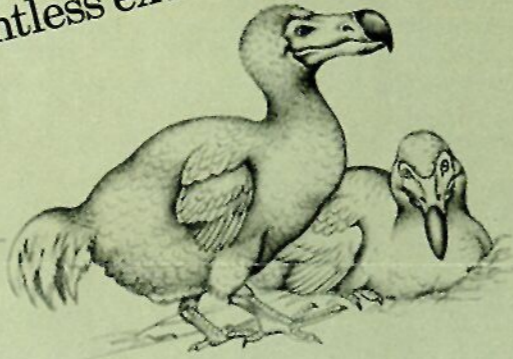


Which Picture DOESN'T Belong?

A

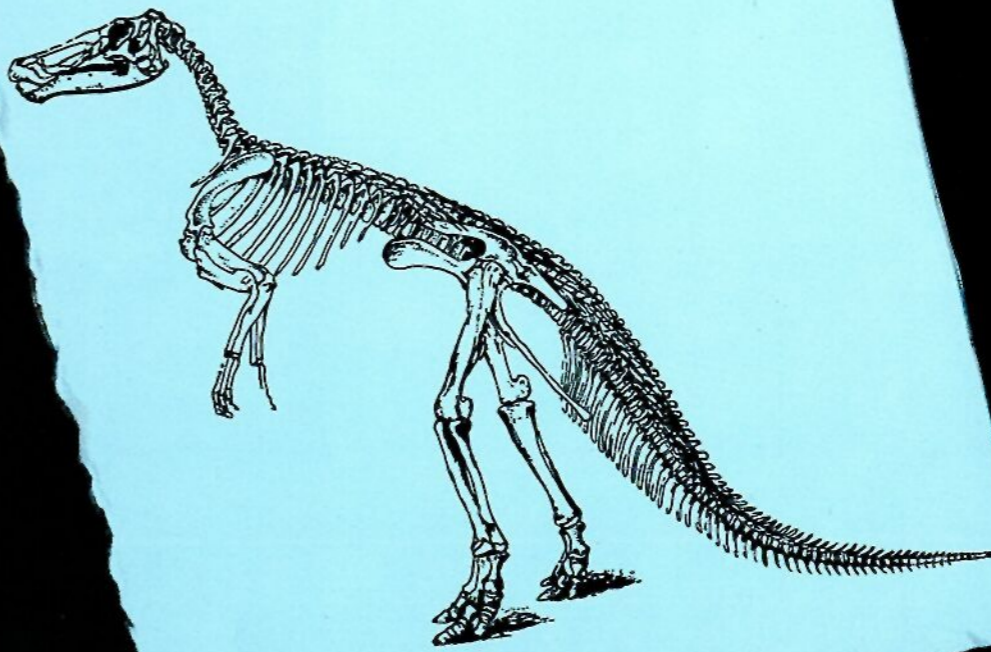


dodo (dō'dō). A large, heavy, flightless extinct bird.



B

dinosaur (dī'né sôr). A group of extinct reptiles. This skeleton of a Cretaceous duck-billed dinosaur is a close relative of *Hadrosaurus*.



C

pig (pig).



Answer:

You're right. Chauvinist pigs are not extinct. You don't hear as much about them any more, but they exist. Despite the emphasis on the new DoD policies against sexual harassment, they manage to hide behind their grade or position. If you feel that you're a target, squeal all the way up the chain of command.