

N

VOYAGER AT NEPTUNE

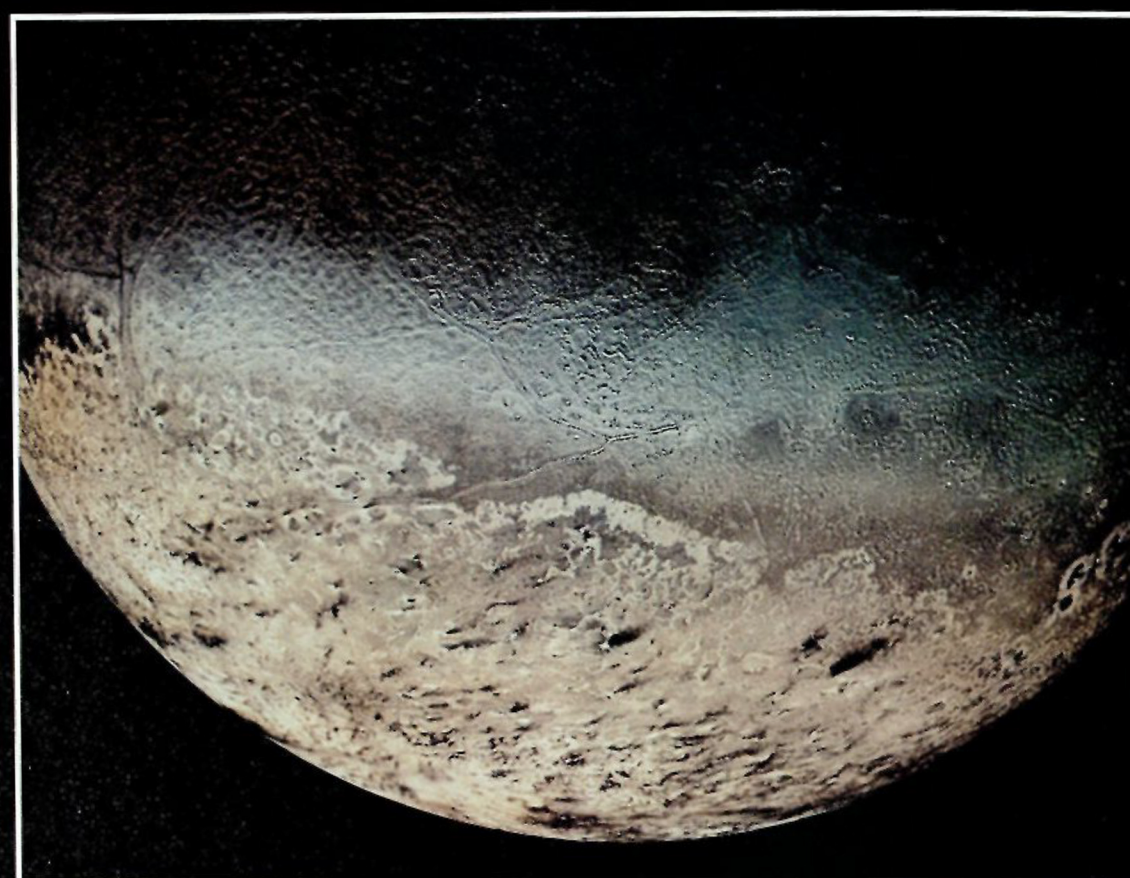
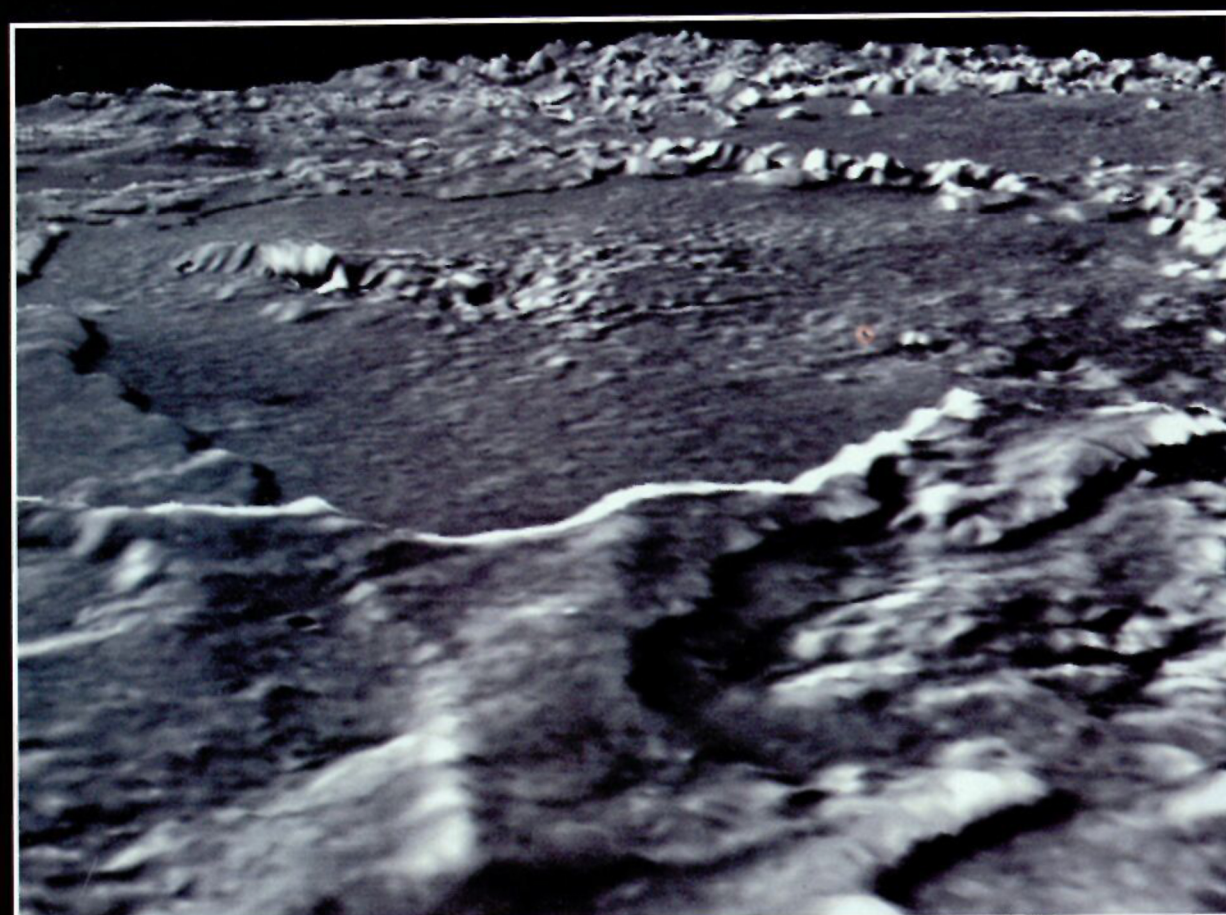
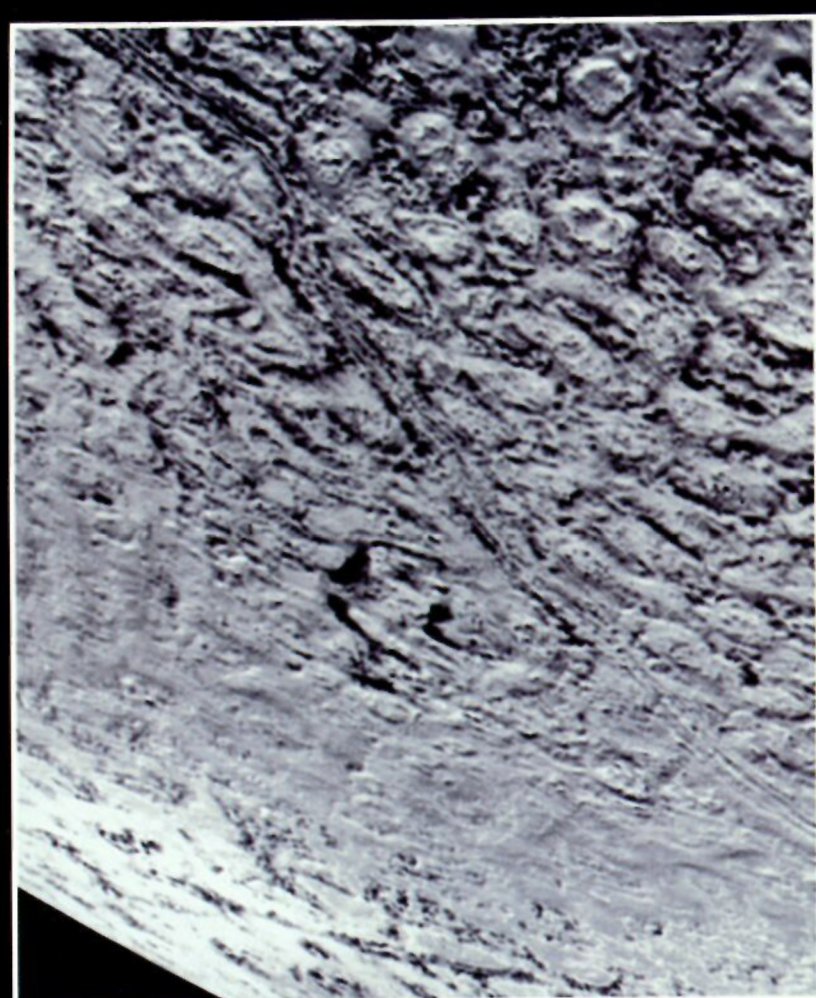
O

T

I

R

T



Triton's south polar cap of nitrogen and methane ice is streaked by deposits from geysers that spurt icy particles several miles into the thin nitrogen atmosphere. Icy calderas and rugged ridges scar the chaotic equatorial terrain.

NASA

National Aeronautics and
Space Administration
Jet Propulsion Laboratory
California Institute of Technology
Pasadena, California

JPL 400-398D 4/90