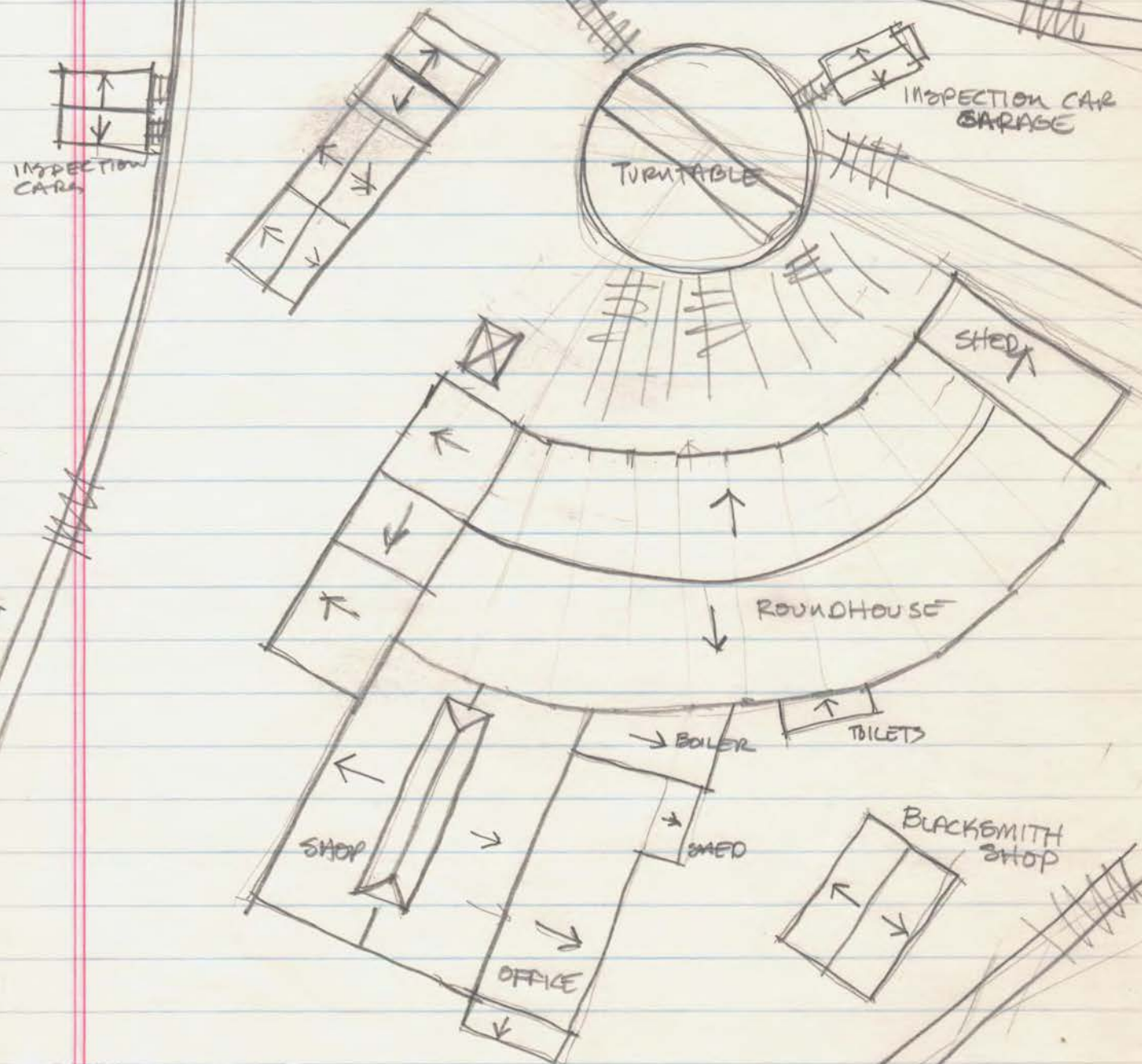


JAN 22, 1981
C&G R.R.
COLUMBUS, MISS.



SKETCH PLAN

RALPH ALLEN
SKETCH

COPIED FROM
FILE NO. 100
JAN 22 1981



TURNTABLE
SIDE OF
ROUNDHOUSE



JAN 22, 1981
C&G R.R.
COLUMBUS, MISS.



↑
← TURNTABLE
END OF R.H.
↓



JAN 22, 1981
C&G R.R.
COLUMBUS, MISS.

SHED
→



OPEN
BAYS
← →



CLOSED
CLEAR-
STORY
→

LADDER
←

SHED
→





SHED AT RIGHT
OF SHOP OFFICE
←



BLDG? IN FRONT
OF ROUND HOUSE.



NOTE LIGHT
←

JAN 22, 1981
C&G R.R.
COLUMBUS, MISS.

Roundhouse
Window
Details



JAN 22, 1981¹
C&G R.R.
COLUMBUS, MISS.



← BACK WALL ↗
ROUNDHOUSE



← END WALL

JAN 22, 1981
C&G R.R.
COLUMBUS, MISS.



BOILER

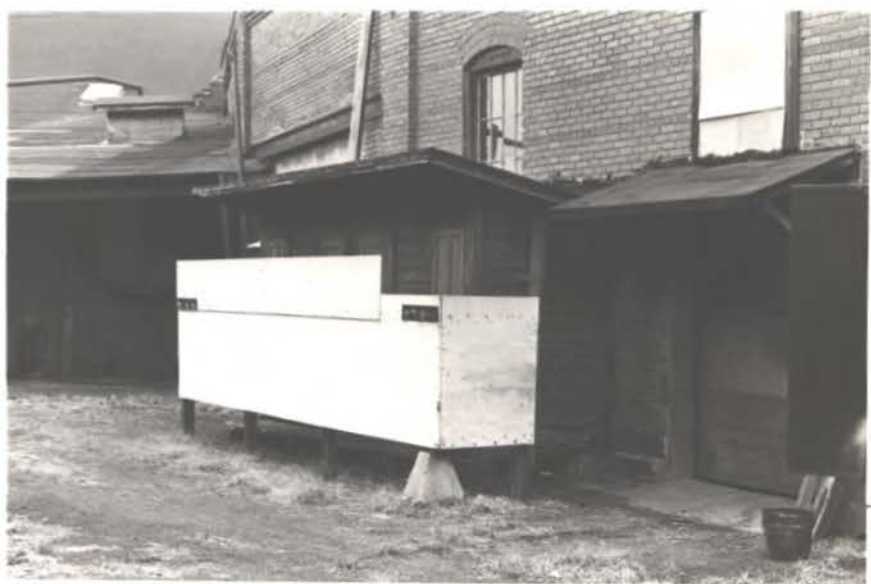


JAN 22, 1981
C&G R.R.
COLUMBUS, MISS.



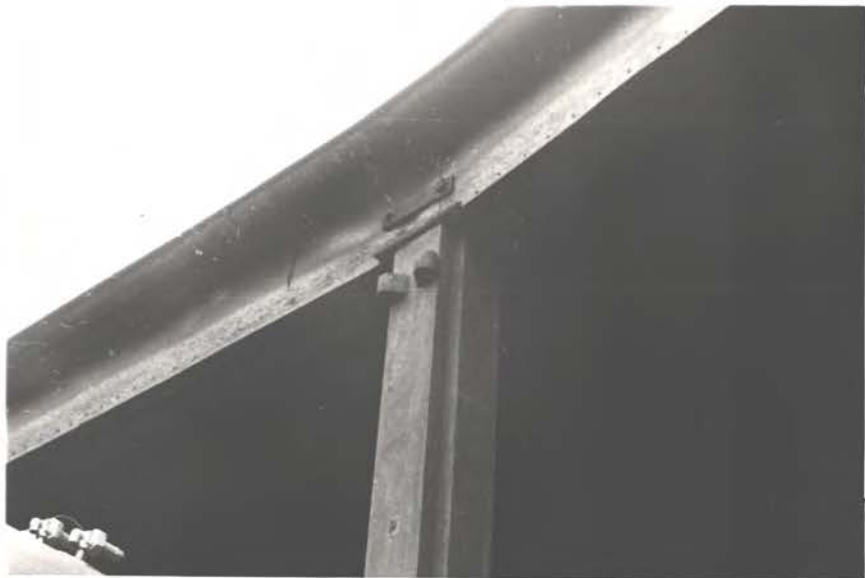
Boiler ↑

TOILETS
ROOFLINE
INDICATES THAT
THEY WERE NOT
BUILT FOR THIS
LOCATION



JAN 22, 1981
C&G R.R.
COLUMBUS, MISS.

HINGES &
STRAP →



NEW
DOOR



LOOK AT
DOOR



JAN 22, 1981
C&G R.R.
COLUMBUS, MISS.

DOOR HINGE
AT R.H.



JAN 22, 1981
C&G R.R.
COLUMBUS, MISS.



ROUNDHOUSE DOOR HINGE
↙
↘



JAN 22, 1981
C&G R.R.
COLUMBUS, MISS.

NOTE
LIGHTS →

1ST TRACK AT
R.H. LOOKING
UNDER CRANE
SUPPORTS INTO
SHOP →



WOOD COLUMN →

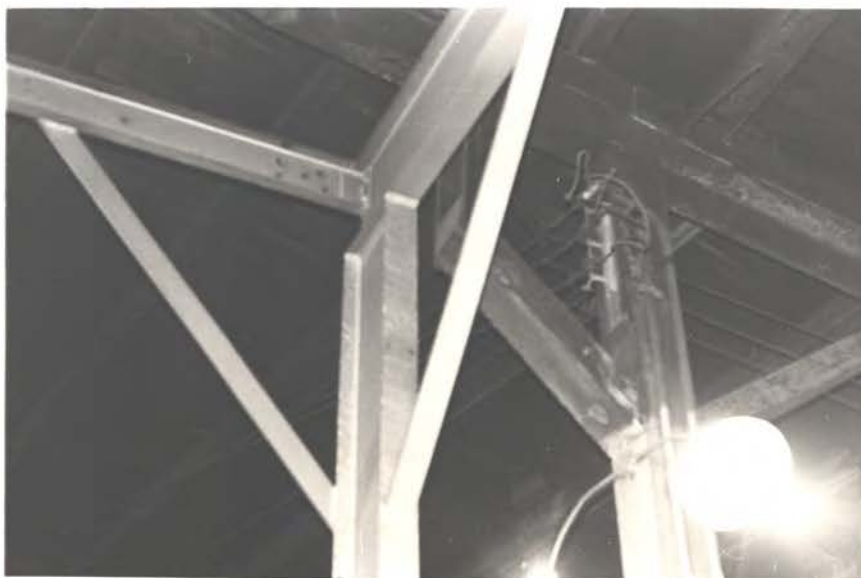
NOTE LIGHTS →



BRIDGE
CRANE
SUPPORTS



BRIDGE CRANE
SUPPORTS →



BLOG
STR
←

JAN 22, 1981
C&G R.R.
COLUMBUS, MISS.



BRIDGE CRANE
SUPPORT
←

BLOG COL AT WALL
AT R.H.
←



BLOG.
FRAMING AT R.H.
←

BRIDGE CRANE
←

JAN 22, 1981
C&G R.R.
COLUMBUS, MISS.

Roundhouse
→

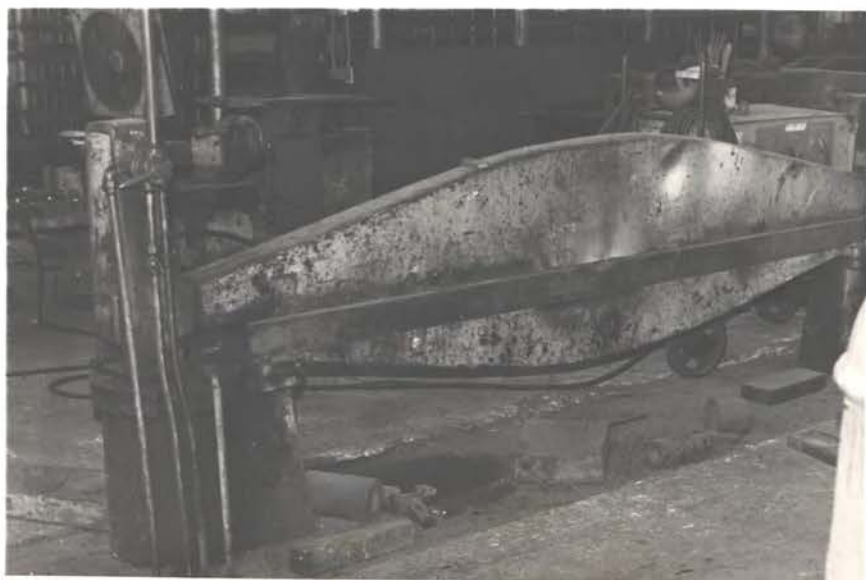


Roundhouse
→
NOTE WOOD
WALL →



?
→

JAN 22, 1981
C&G R.R.
COLUMBUS, MISS.





COLS. AT
CLEAR-
STORY AT
R.H.



← COL AT R.H

JAN 22, 1981
C&G R.R.
COLUMBUS, MISS.

ROUNDHOUSE



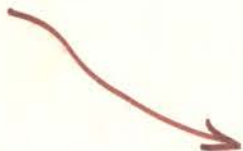
HARVIE JONES



BRIDGE CRANE
AND ROOF STR
AT R.H.



METAL R.H. DOOR
COL.



JAN 22, 1981
C&G R.R.
COLUMBUS, MISS.



METAL COL AT DOORS
AT R.H. ↗



↖ STR. AT. R.H.



CLEARSTORY AT
ROUNDHOUSE
↖

JAN 22, 1981
C&G R.R.
COLUMBUS, MISS.

ROUNDHOUSE



METAL COL
FOOTING FOR
BRIDGE CRANE
AT R.H.



JAN 22, 1981
C&G R.R.
COLUMBUS, MISS.



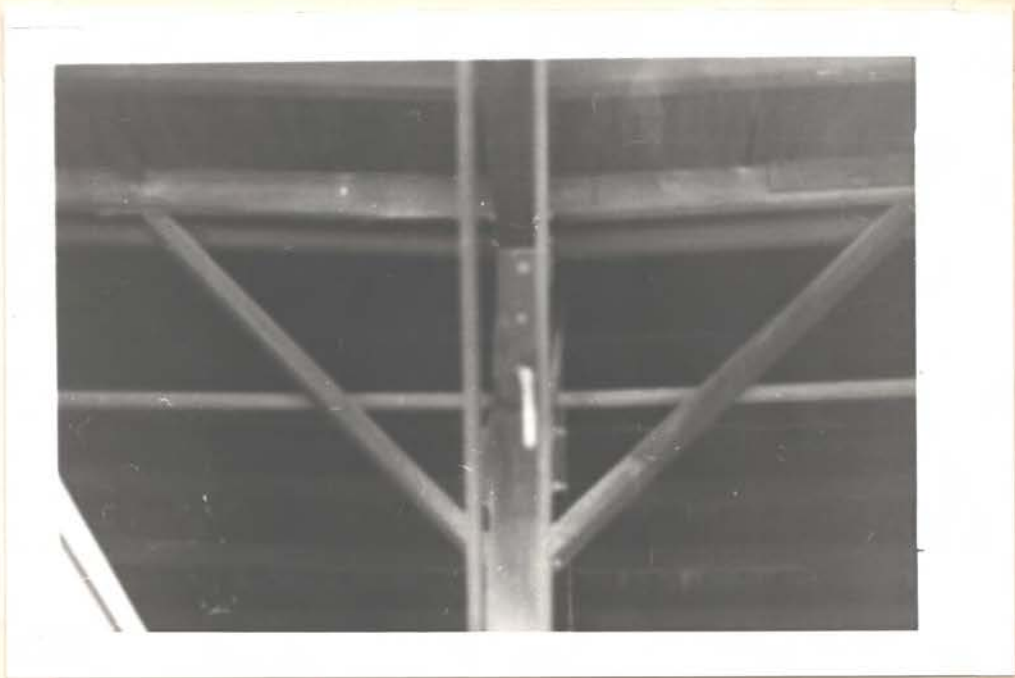
ROUNDHOUSE LOOKING
INTO LEAN TO.



← BRIDGE CRANE

ROUNDHOUSE LOOKING INTO
LEAN TO

JAN 22, 1981
C&G R.R.
COLUMBUS, MISS.



JAN 22, 1981
C&G R.R.
COLUMBUS, MISS.

COLUMN AT ROUNDHOUSE ↗

↖ ROOF STR AT R.H.





ROUNDHOUSE ROOF
STRUCTURE.



SMOKE JACK STRUCTURE



ROUNDHOUSE
ROOF STRUCTURE



JAN 22, 1981
C&G R.R.
COLUMBUS, MISS.

JAN 22, 1981
C&G R.R.
COLUMBUS, MISS.

END
Back
Wall AT
R.H. →

WOOD
WALLS
AT R.H. →





WOOD WALL
AT R.H.

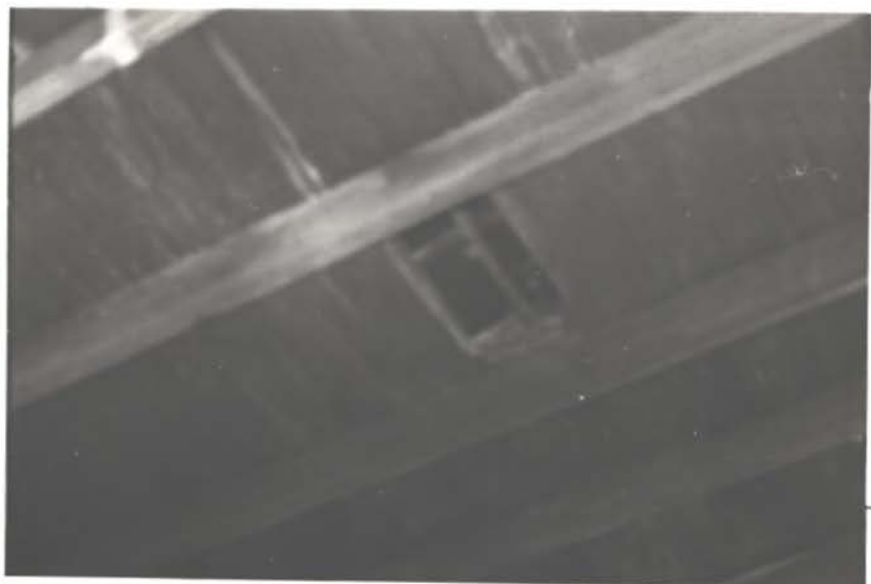
↑ NOTE
STORAGE
SHED



ROUNDHOUSE STR.

JAN 22, 1981
C&G R.R.
COLUMBUS, MISS.

SMOKE JACK
ROOF HOLE →



SMOKE JACK
ATTACHMENT
STRAPS ↘



JAN 22, 1981
C&G R.R.
COLUMBUS, MISS.



SMOKE JACK
ATTACHMENT STRAPS
←

JAN 22, 1981
C&G R.R.
COLUMBUS, MISS.

STEAM
GENERATOR →
CIG R.R.
COLUMBUS MISS



STORAGE
SHED
(INTERIOR) →



JAN 22, 1981
C&G R.R.
COLUMBUS, MISS.



← COAL STOVES
IN RAINHOUSE



CAR JACK
←

JAN 22, 1981
C&G R.R.
COLUMBUS, MISS.

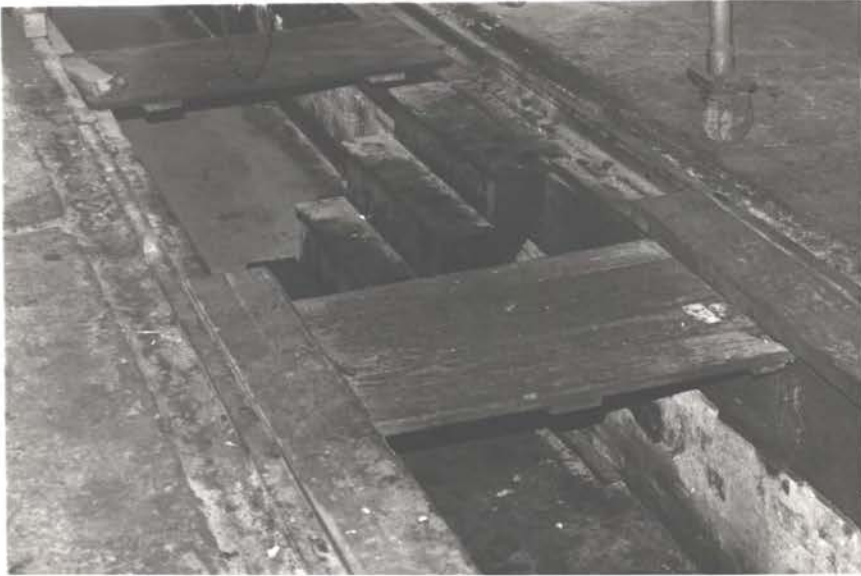
WHEEL JACK
PIT BEAM



WOOD COVERS
AT WHEEL JACK
PIT



JAN 22, 1981
C&G R.R.
COLUMBUS, MISS.



STEPS AT ~~W.J.~~ PIT.



← W.J. PIT & WORK PIT

JAN 22, 1981
C&G R.R.
COLUMBUS, MISS.

DROP PIT
WHEEL JACK



JAN 22, 1981
C&G R.R.
COLUMBUS, MISS.

↓ DROP PIT WHEEL JACK



COVER
AT
PIT
←

BEAM



JAN 22, 1981
C&G R.R.
COLUMBUS, MISS.

WORK PIT -
NOTE BRICK
WALLS &
WOOD BEAM
AT TOP.



JAN 22, 1981
C&G R.R.
COLUMBUS, MISS.

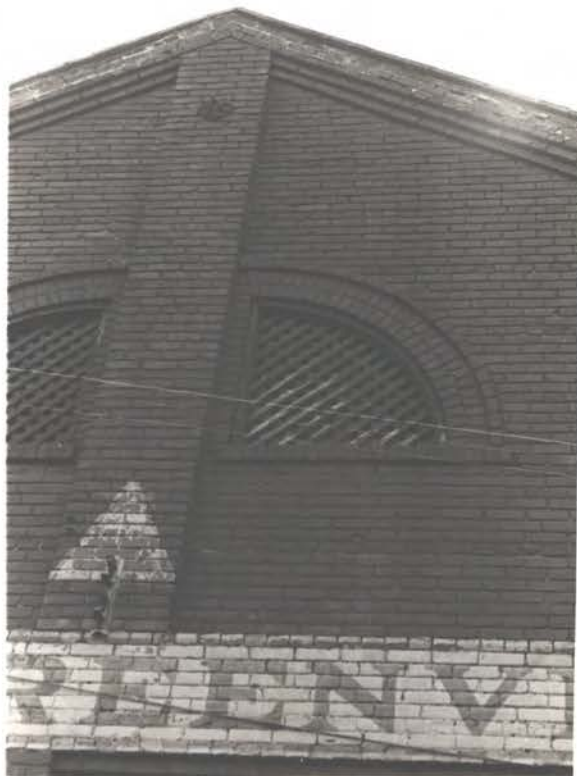
SHOP
FRONT



LEFT
SIDE OF
SHOP



VENTS →
AT SHOP



JAN 22, 1981
C&G R.R.
COLUMBUS, MISS.



← FRONT OF SHOP



← SIDE OF SHOP



← FRONT OF SHOP

JAN 22, 1981
C&G R.R.
COLUMBUS, MISS.

PHOTOS BY RALPH ALLEN

SHOP ROOF
STR



SHOP
ROOF
STR



SHOP ROOF
STR



JAN 22, 1981
C&G R.R.
COLUMBUS, MISS.



SHOP FROM R.H.



SHOP



SHOP

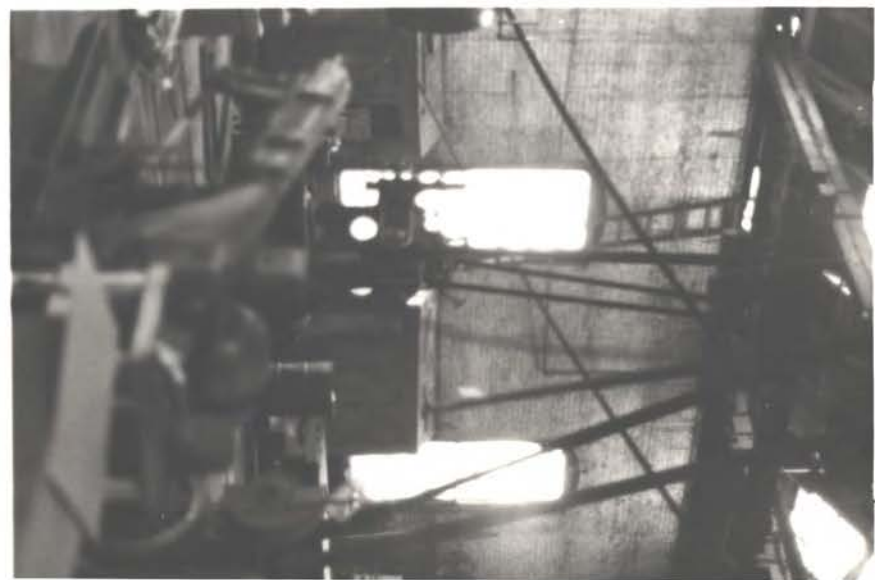
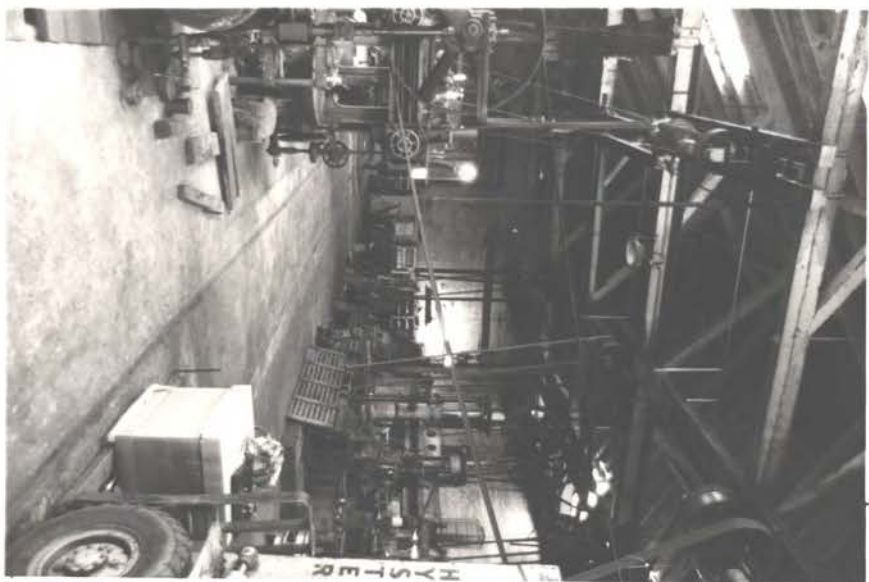
JAN 22, 1981
C&G R.R.
COLUMBUS, MISS.



VIEWS
OF
SHOP



JAN 22, 1981
C&G R.R.
COLUMBUS, MISS.



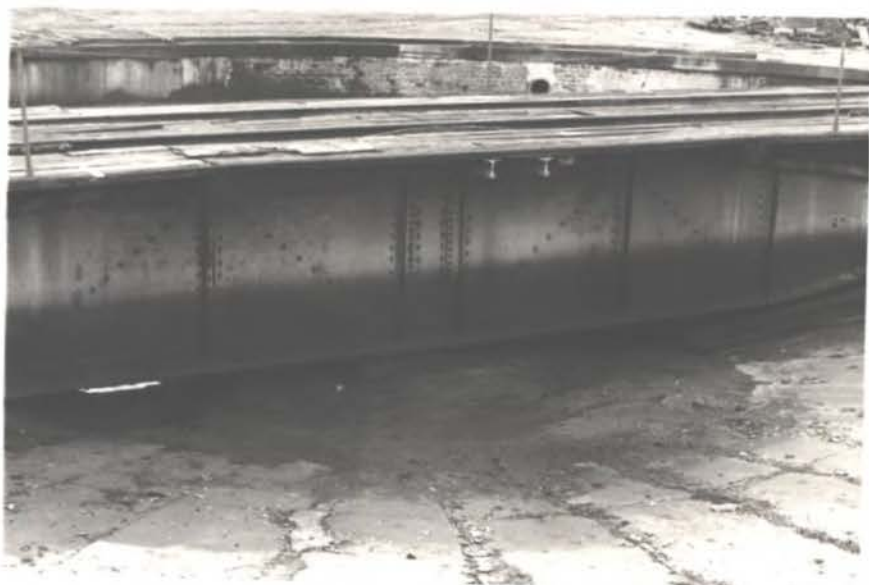
←
Views
of
Shop
←

JAN 22, 1931
C&G R.R.
COLUMBUS, MISS.

TURNTABLE



NOTE BRICK
WALL →



JAN 22, 1981
C&G R.R.
COLUMBUS, MISS.



ENGINES ON
TURNTABLE



JAN 22, 1981
C&G R.R.
COLUMBUS, MI

NOTE
TIES →

ROUND TRACK
AT PIT.



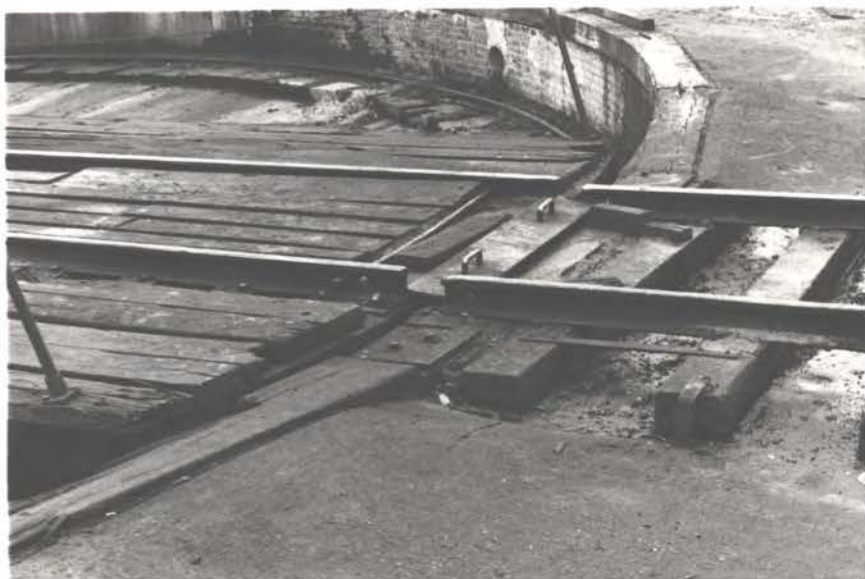
HIGH RAILS
AT R.H.
SIDE →



JAN 22, 1981
C&G R.R.
COLUMBUS, MISS.



ALIGNMENT DEVICE

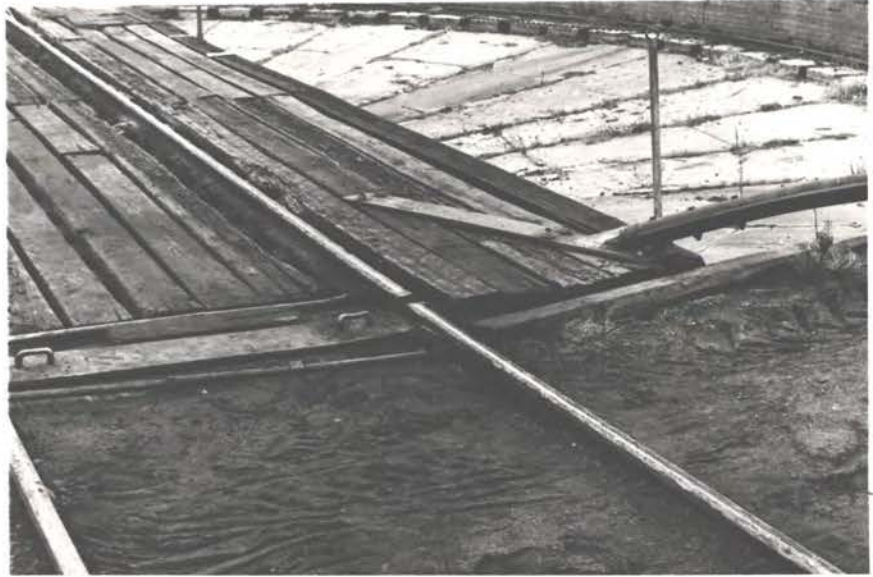


NOTE 'GAP' IN
RAIL AT T. TABLE



JAN 22, 1981
C&G R.R.
COLUMBUS, MISS.

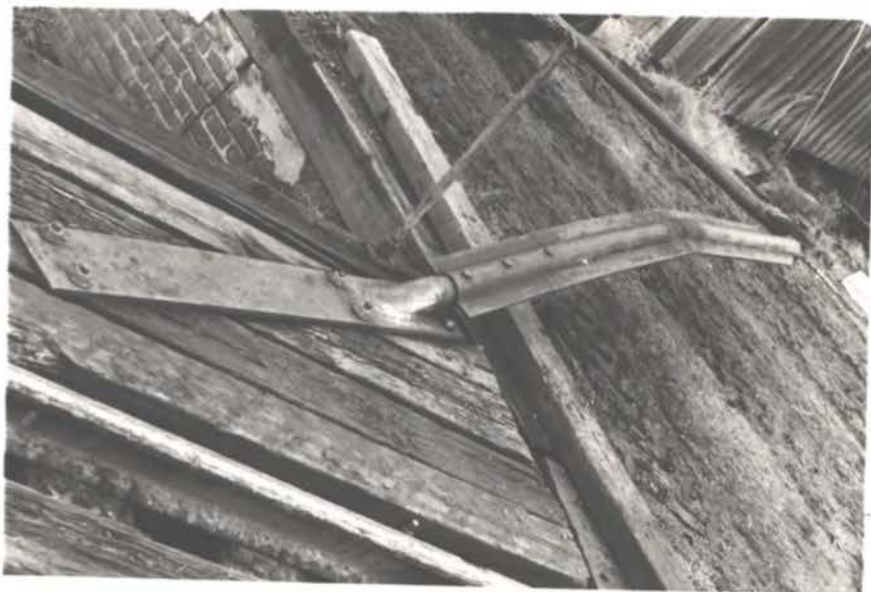
ALIGNMENT
DESIGN AT
TURNABLE



ARMSTRONG



JAN 22, 1981
C&G R.R.
COLUMBUS, MISS.



↑ ARMSTRONG

← NOTE BRICK WALL
↓

JAN 22, 1981
C&G R.R.
COLUMBUS, MISS.

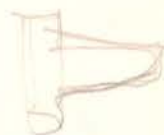
SAND TOWER
C & G - COLUMBUS MISS.



JAN 22, 1981
C & G R.R.
COLUMBUS, MISS.



↑
← INSPECTION CAR
GARAGE. ↓



JAN 22, 1981
C&G R.R.
COLUMBUS, MISS.

NOTE
TRACTOR →



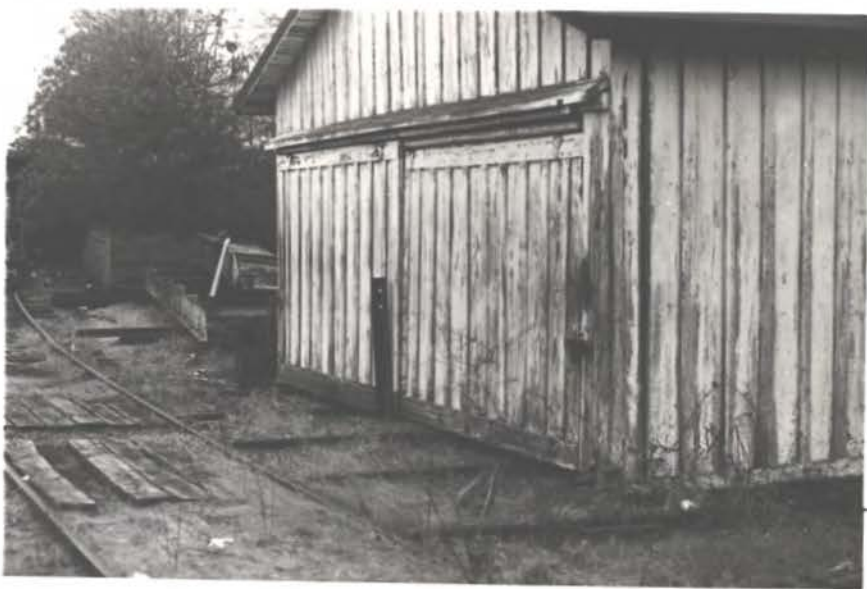


← BLDG TO LEFT
OF FACILITY



JAN 22, 1981
C&G R.R.
COLUMBUS, MISS.

INSPECTION
CAR (2) BLDG 2



JAN 22, 1981
C&G R.R.
COLUMBUS, MISS.



MISC. BLDG AT
LEFT OF R. H.



JAN 22, 1981
C&G R.R.
COLUMBUS, MISS.



BLACKSMITH
SHOP



CRANE →



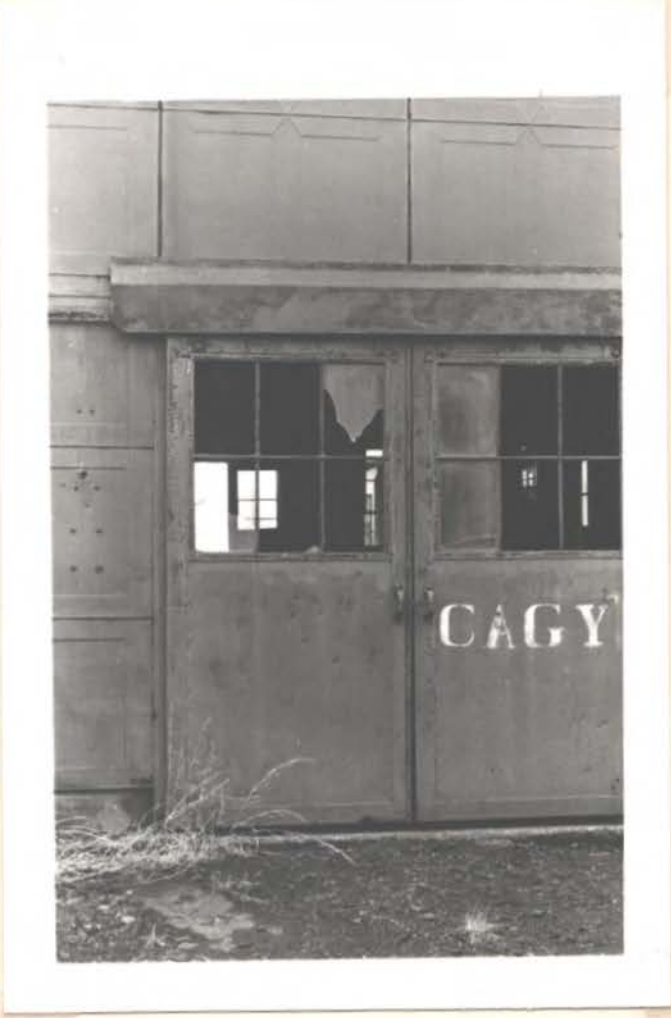
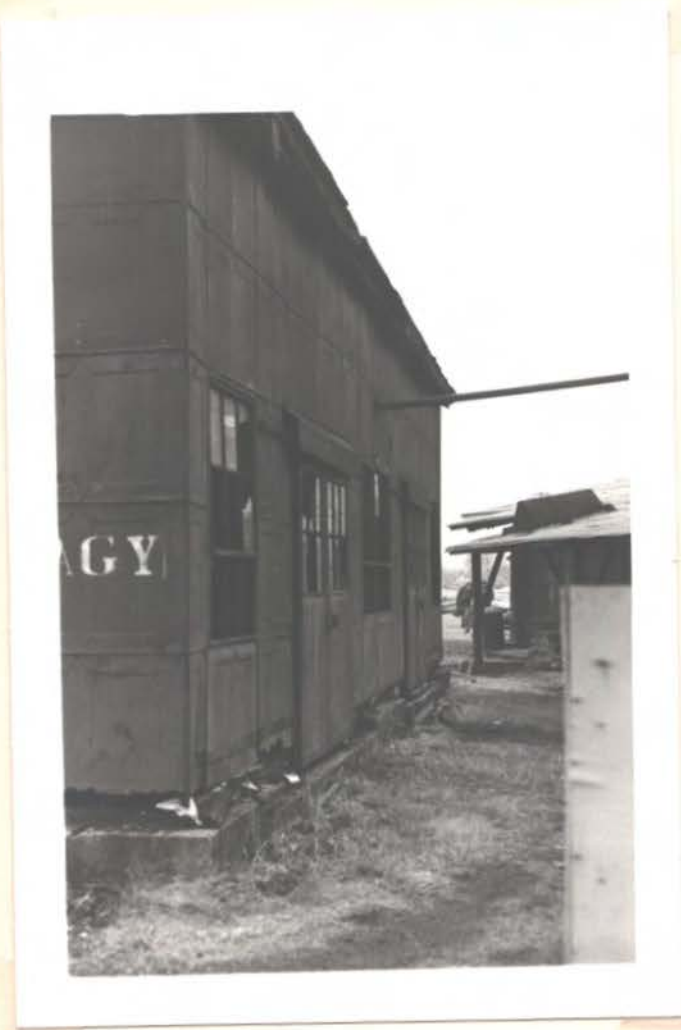
JAN 22, 1981
C&G R.R.
COLUMBUS, MISS.

JAN 22, 1981
C&G R.R.
COLUMBUS, MISS.



BLACKSMITH
SHOP

SLIDE



BLACKSMITH SHOP



DROP FORGE P ↘





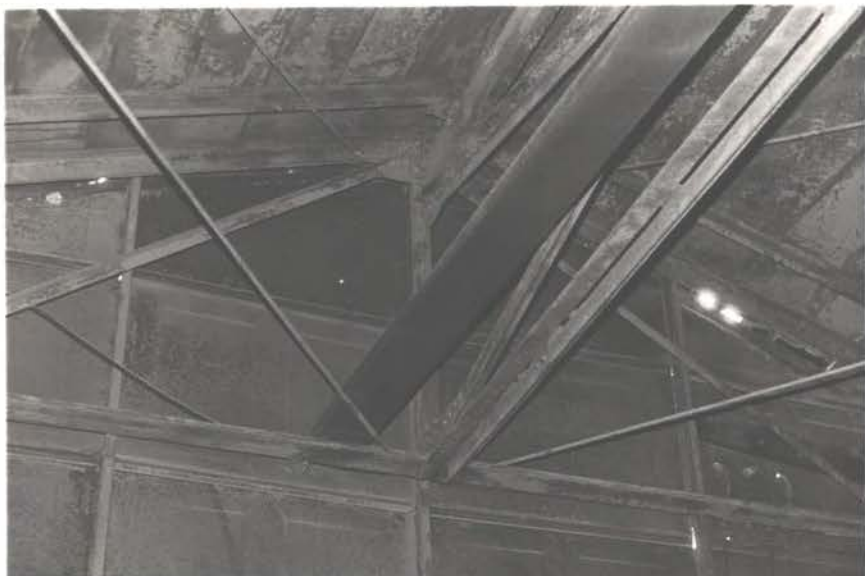
NOTE HOOKS
←

BLACKSMITH
SHOP



JAN 22, 1981
C&G R.R.
COLUMBUS, MISS.

BLACKSMITH
SHOP



CRANE →



JAN 22, 1981
C&G R.R.
COLUMBUS, MISS.

CRANE ↓



BLACKSMITH
SHOP

←
CRANE



CRANE ↗

JAN 22, 1981
C&G R.R.
COLUMBUS, MISS.