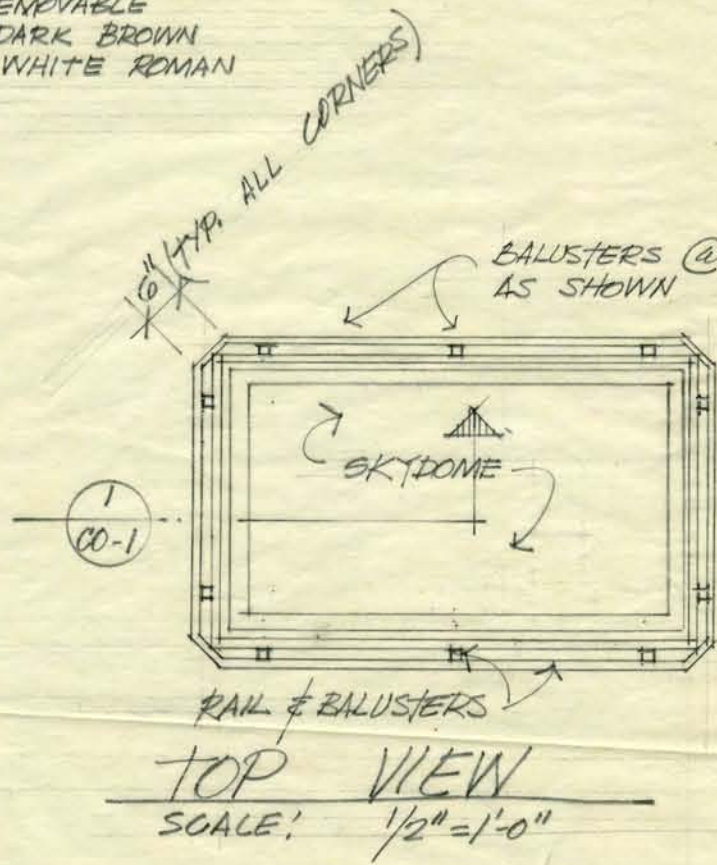


PLASTIC SIGN

MOUNT ON REDWOOD PLAQUE - 6 EA.
NON-CORROSIVE, NON-REMOVABLE
SCREWS + ADHESIVE - DARK BROWN
EXT. GRADE PLASTIC - WHITE ROMAN
ENGRAVED LETTERS.



NOTE:
SIGN TO FACE
LAW LIBRARY

1" # STEEL TUBING (PAINTED)
RAIL & BALUSTERS (TOP OF BALUSTERS
TO HAVE PLATE WELDED & GROUND
SMOOTH ON TOP) - ANCHOR EA.
BALUSTER SECURLT - ALL JTS.
WELDED & GROUND SMOOTH

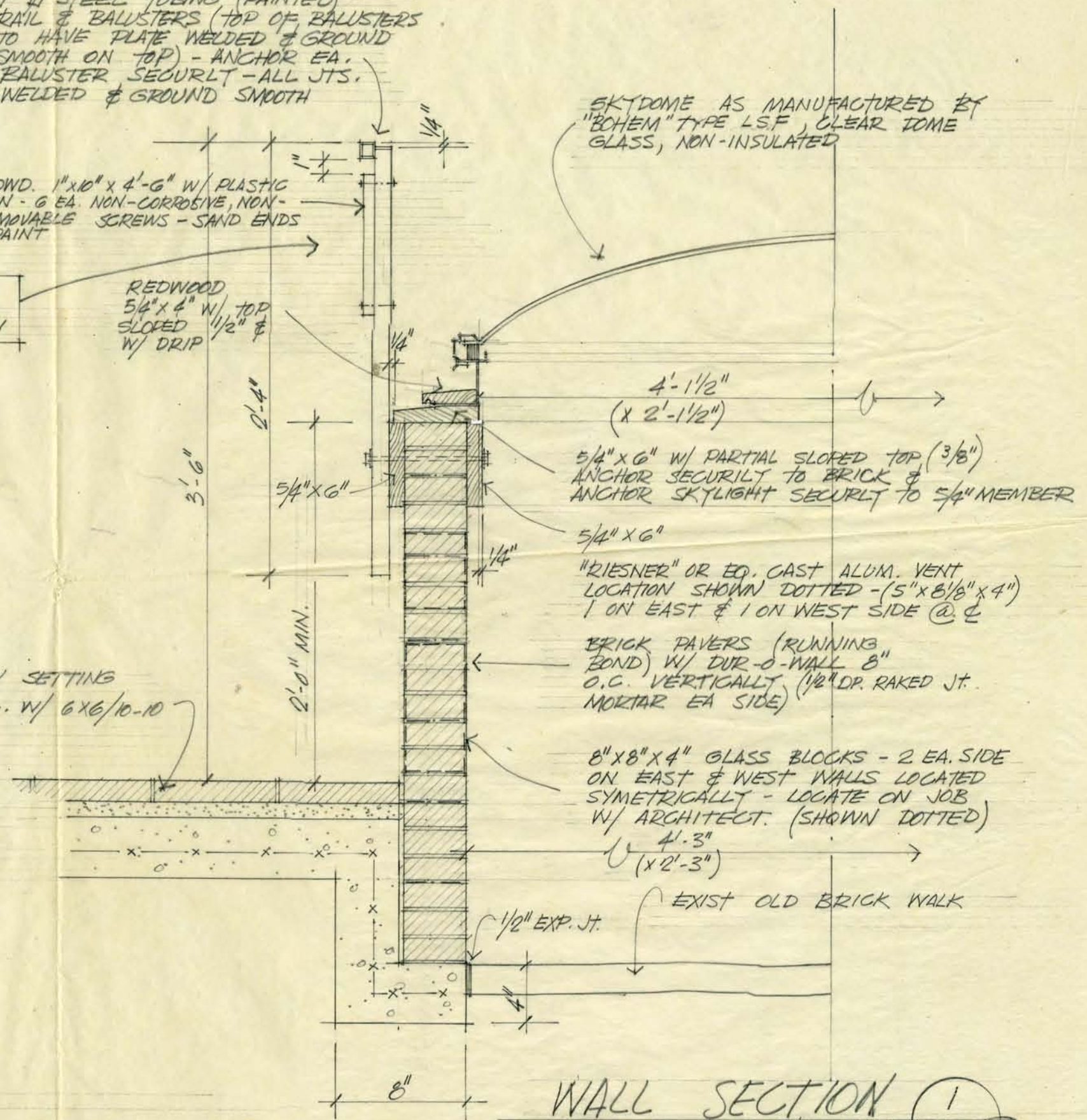
REDWD. 1" x 10" x 4'-6" W/ PLASTIC
SIGN - 6 EA. NON-CORROSIVE, NON-
REMOVABLE SCREWS - SAND ENDS
& PAINT

REDWOOD
5/4" x 4" W/ TOP
SLOPED 1/2" &
W/ DRIP

SKYDOME AS MANUFACTURED BY
"BOHEM" TYPE L.S.F., CLEAR TOME
GLASS, NON-INSULATED

BRICK PAVERS ON SETTING
BED ON 4" CONG. W/ 6X6/10-10
W.M. REINF.

LOCATION OF SKYLIGHT WELL SHALL
BE AS DIRECTED BY ARCHITECT ON
JOB SITE.



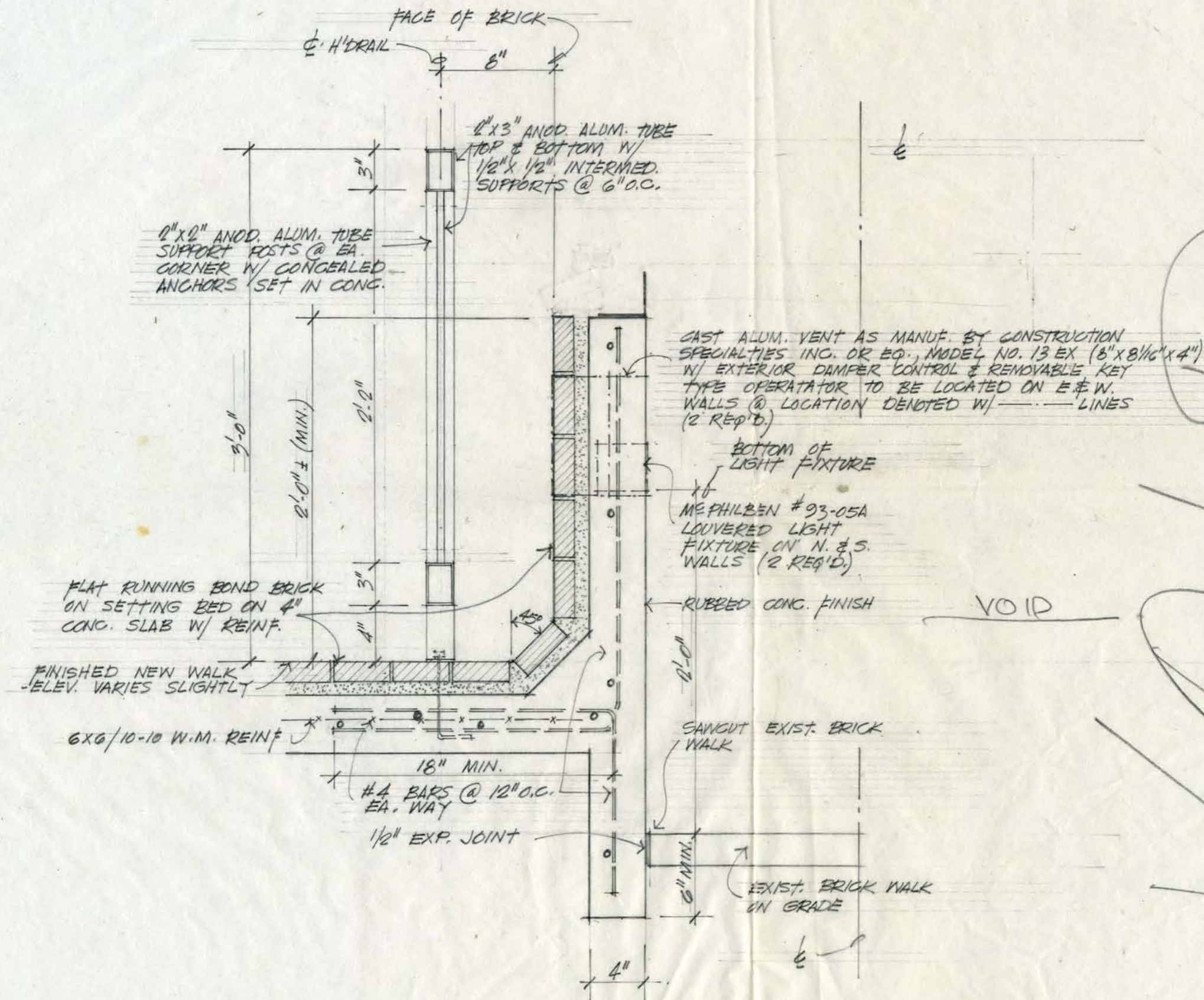
JONES AND HERRIN, ARCHITECTS, A. I. A.
215 RANDOLPH AVE. HUNTSVILLE, ALABAMA

10 JUNE, 1974

VIEW WELL OF EXIST. OLD SIDEWALK

WALL SECTION 1
SCALE: 1/2" = 1'-0" CO-1

7362
3 1/4"
3 1/2" D
W/LOUVER
M-PHILBEN
#93-05A



SIDEWALK WELL / RAIL

SCALE: 1/2" = 1'-0"

