

c. 1890's (per arch. evidence)
CUMBERLAND PRESBY. CHURCH
MANCHESTER, TN

to be city Arts Center
photos Aug, 1992 HP Jones, FA/B

Strenuous = heavy rain

JIM GARDNER/DIAT
ELTON PLUMBING
(MANC. AREA COMM. 1982)
615-728-3568
RT. 7 BOX 7023
Hwy 41 & TN. 53
212-37355

1890's
MANCHESTER
C.P. CHURCH



CLARK ST

Walls bowed out 2"-3" at ± 3' above grade due to footing rotation due to wet, softer, weak soil at ext. of wall
Note gap at jamb

HIGH ST.

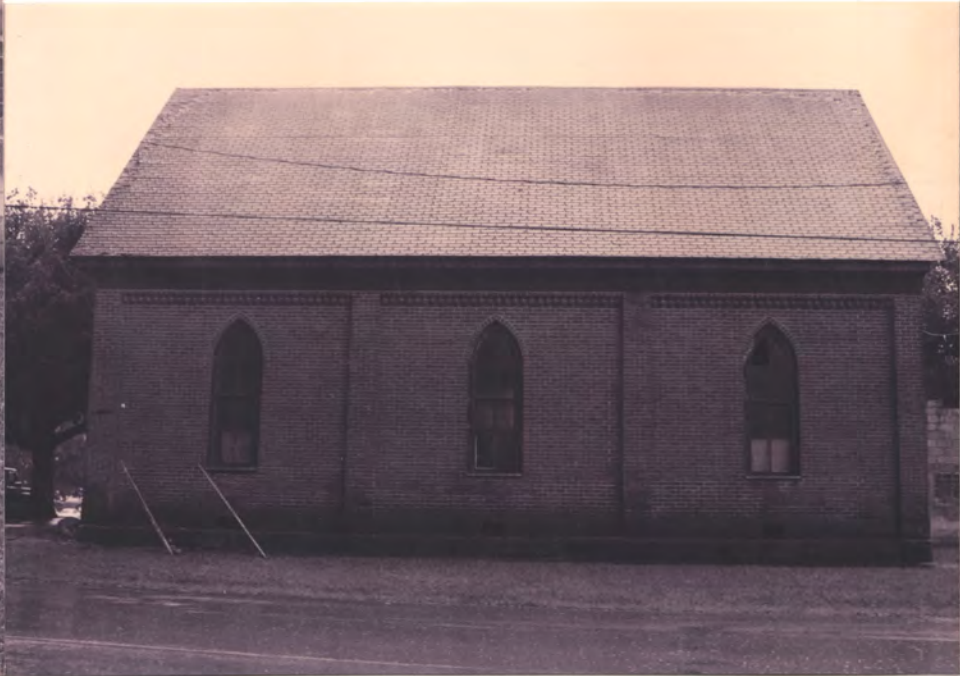


FRONT ENTRY



19617 P.S. - don't know if executed - HS

Walk cracked due to rotation of wall HIGH ST. SIDE



← R6W2

HIGH ST. SIDE

↓
 bowed out + vert. crack
 at center

← 1948 makeshift
 conc. blk. addn



← BACK

↑
 vert. crack
 (see rt.)

← 1948 addn

← BACK

↓ bowed out 2"-3" at ±3'h.



LEFT SIDE
(opp. High St.)

↓ bowed out ±2"-3", ±3'H,



Back

↑
vert. crack due to
bowing - out of wall

3.17





bowed out perhaps 1st-2nd over door



deteriorated, mortar / FRONT (Church St.) High St. due to rising damp = typical of most hist. Wlp = easy to repair



High St. wall top bowed out 2nd-3rd

bowed out 1"-2" ±
above entry arch



ENTRY
(Church St.)

5017



High St.
↙

Rt. Corner at St. intersection
(combined rising damp + footing rotation)



↙ High St.

2ND PILASTER
walk bowed due to foot. rotation

↙ High St

3RD. PILASTER

6

front



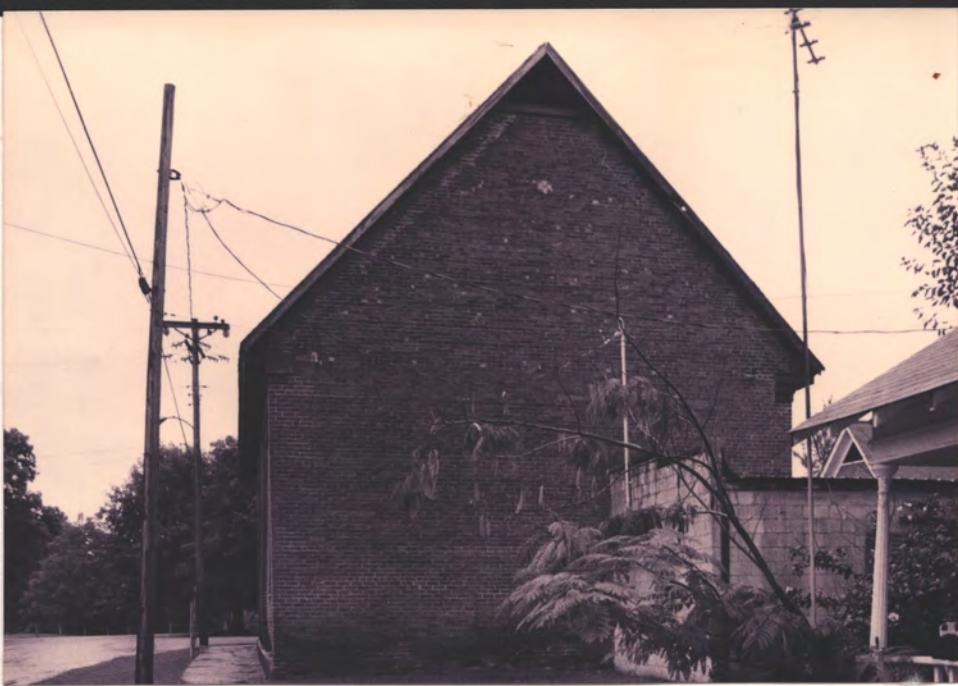
High St. →

c. 1948 corr. blk. addition
BOWLED →



Rti. Penn corner
BRICKS = $8\frac{1}{2}'' \times 2\frac{1}{2}''$ + mortar joints
(over usual size of $2\frac{1}{4} \times 8$)

7/17



BACK



Note trace of removed wood
cornice of frieze that
must have been like
the one remaining on front



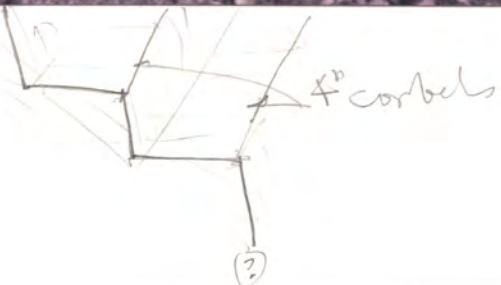
Cornice of
front left corner

c. 1948 Addition
 (corr. brick,
 flat roof)



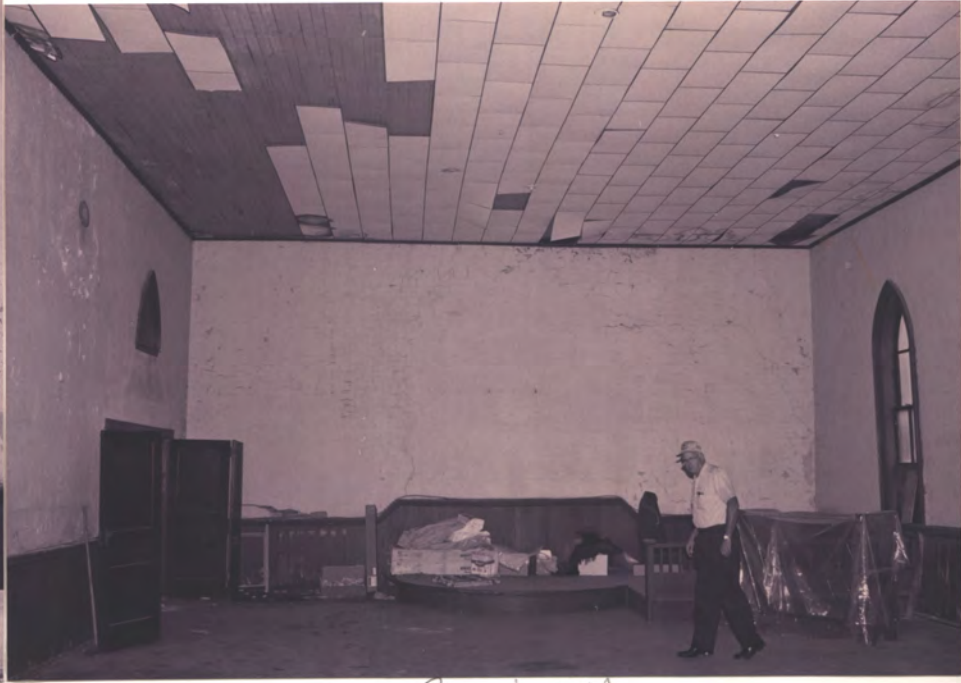
lt. soil = lt. tan clay, looks bad.
 dark soil = top soil
 Need a profess. soil test & analysis, +

digging for footing & soil
 Left side
 (opp. High St.)
 determine footing size, depth & condition



9/17

Wide opening is c. 1948 to add.
Note lancet window top remnant above



Rear Wall

left front corner,
Note diagonal settlement/bow crack

Note semi-hexagon entry
trace on ceil. See etc.



Front Wall

left front corner

dbl - beam 1x6 orig. ceil
at removed semi-hex entry vestibule



Rt. side (High St)

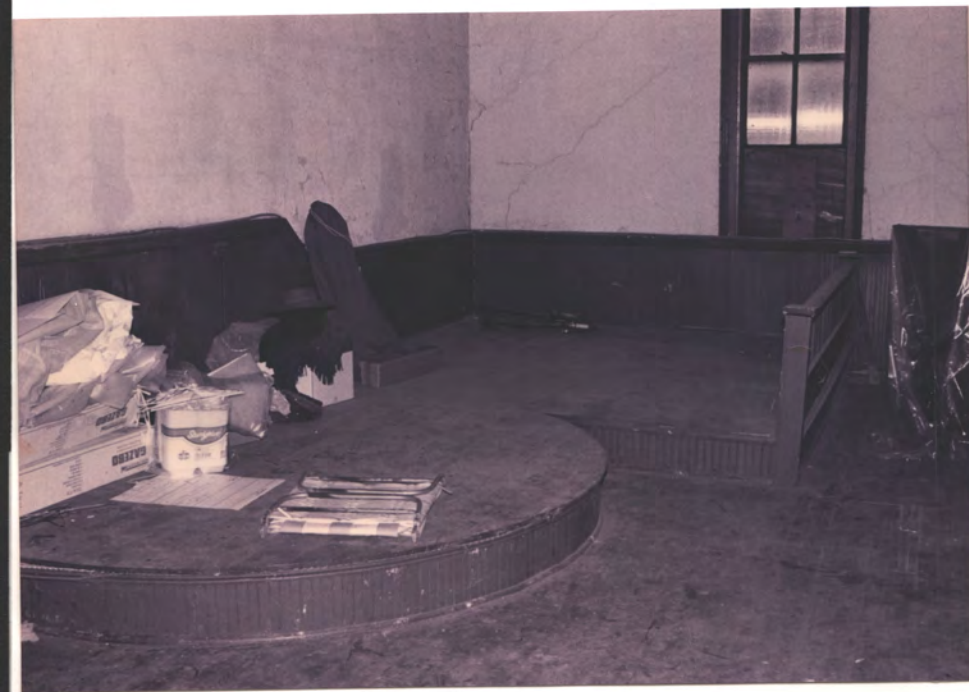


shifted +
bowed
right →
slab
(High St.)

11/26/17



→ front



CHANCEL

→ front



→ front



CHANNEL



CHANNEL REAR WALL
bowed out $\pm 2"$

Left side
wainscot
bowed out
 $\pm 1"$
settled $\pm 1/2"$





Cons. blk. added to support
joists - out - of - pocket



front

Grnd sp. = $\pm 12''$ h.

$2\frac{1}{4}'' \times 8'' \pm$
Joists 16'' o.c.

front

RT. SIDE (HIGH ST.)

Wall shifted out $\pm 1''-2''$ at fl., bowed out $2''-3''$ at wains. Top, settled $\pm 1''-2''$



settled $1''-2''$, +
shifted out $1''-2''$
Joists out of mass. pockets
+ some detent.

front

front



Great wall
of Ch.
to chancel

c. 1948 cheap addition, w/ 1992 new flat roof frame.



Rem wall of church
= bowed-out

to chancel

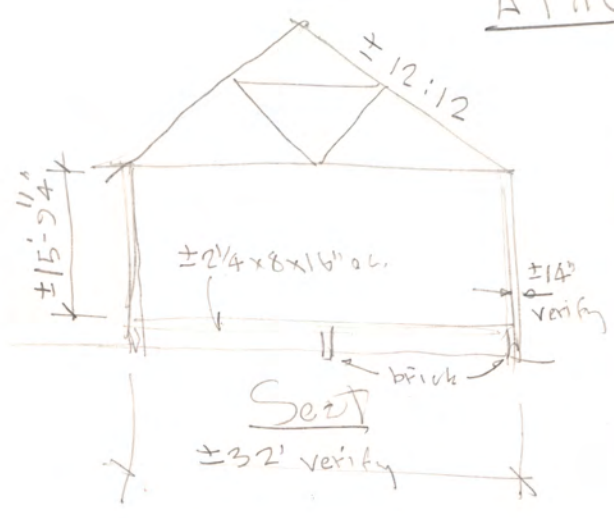


150617

Modern decking (SYP)



ATAC - High St. side, looking to channel from front - st. corner





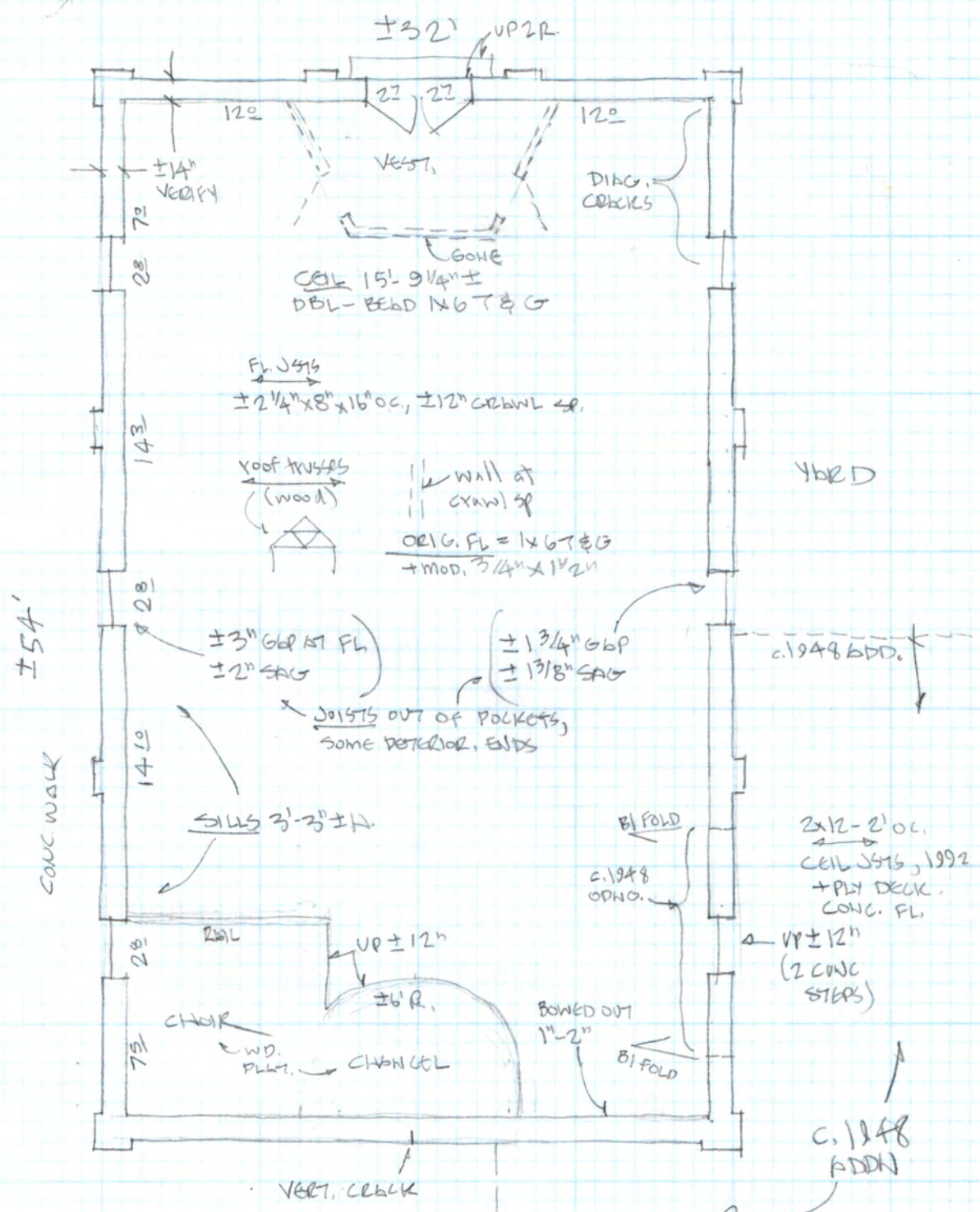
front rt. gable



front left gable

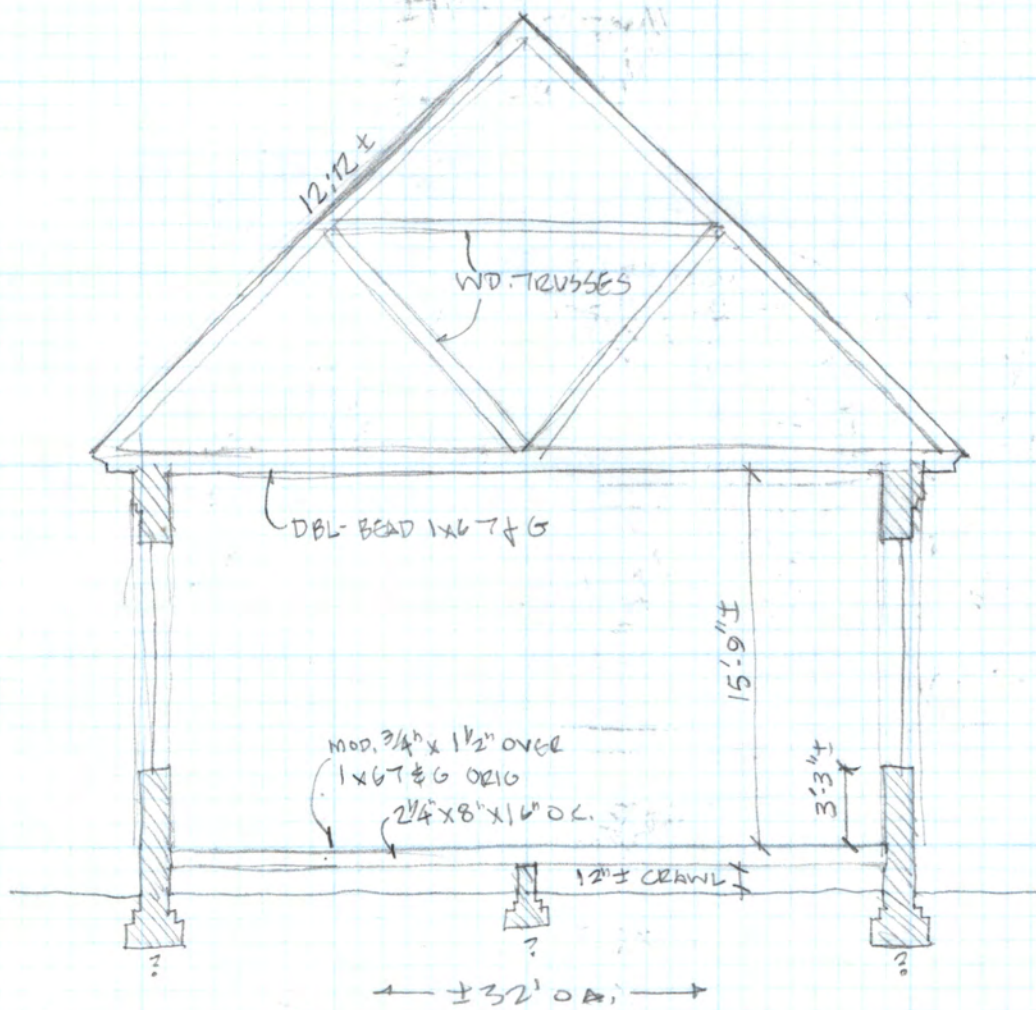
CHURCH ST.

H/6A ST.



c. 1890's (PER EVIDENCE)
 CUMBERLAND PRESBY. CHURCH 1/8" = 1' ±
 MANCHESTER, TN.
 AUG. 1992 NOTES, H.P. JONES, F.A.I.D.

c. 1948 ADD.



C. 1890'S CUMBERLAND PRESB. CH., MANCHESTER, TN.
 AUG. 1992 SKETCH - H. P. JONES, F.A.I.A.

1/8" = 1' ±