

FELLOWSHIP HALL + C.R.G. - c. 1965

↳ Designed by H Jones while w/ Dick Diekman, Arch. - not intended (by owner) to match orig. bldg - owner intended to demolish, against urging of HJ



RS. July 88
see "after" repair photos on pg. 2-A

↳ interior restor. circa 1975 by JKH, HJ

↳ Exterior restor. 1986 by JKH - HJ

↑ IMPACT

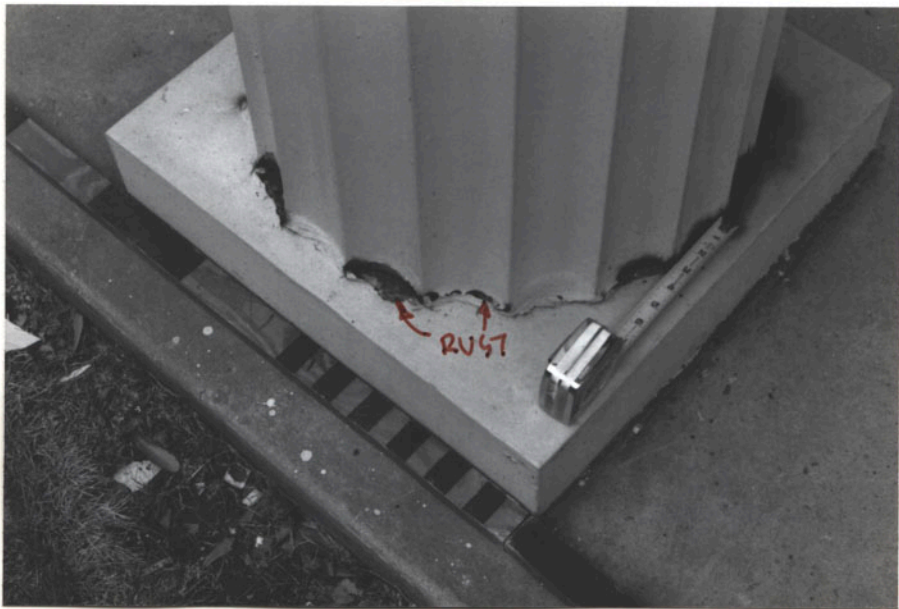
N-11

SANCT. - 2 COLS. OUT;
ONE FOR RUST REPAIR,
ONE DEMOLISHED BY VEHICLE.

FIRST PRESBYTERIAN CHURCH
GUNTERSVILLE, AL. photos June 1986 H.P. Jones, FAIA



COLS. = GALV. SHEET IRON SHAFT,
C.I. CAP + BASE (NO VENTIL.)



BASE
(NO VENTIL.)



2 photos July 1988 NRS

After repairs. All original metal cols. were replicated in staved heart redwood (Hartmann-Sanders Co.) since metal dies were not available.

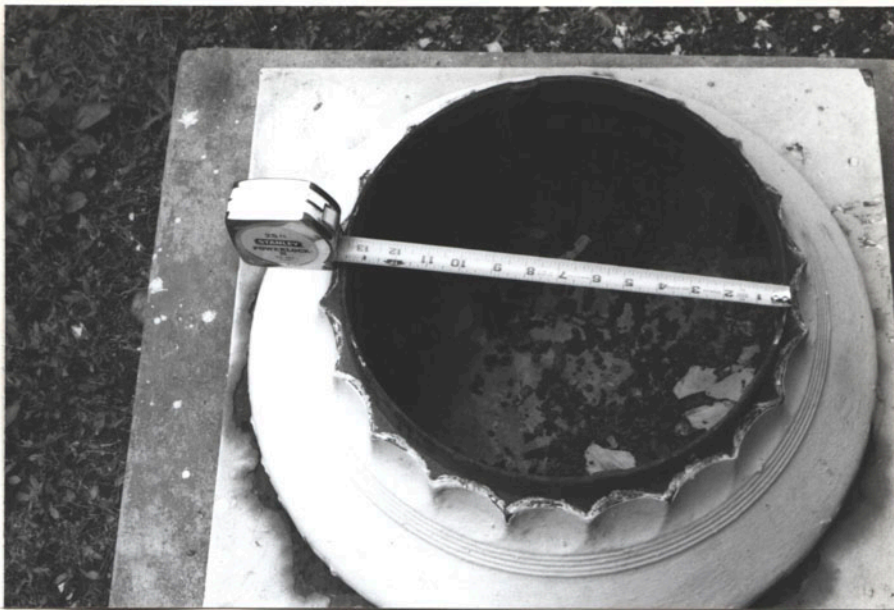
Excellent job. Contr. = Charbon constr. co.

Extra bricks needed were salvaged from a near S.E. boiler flue (unused)

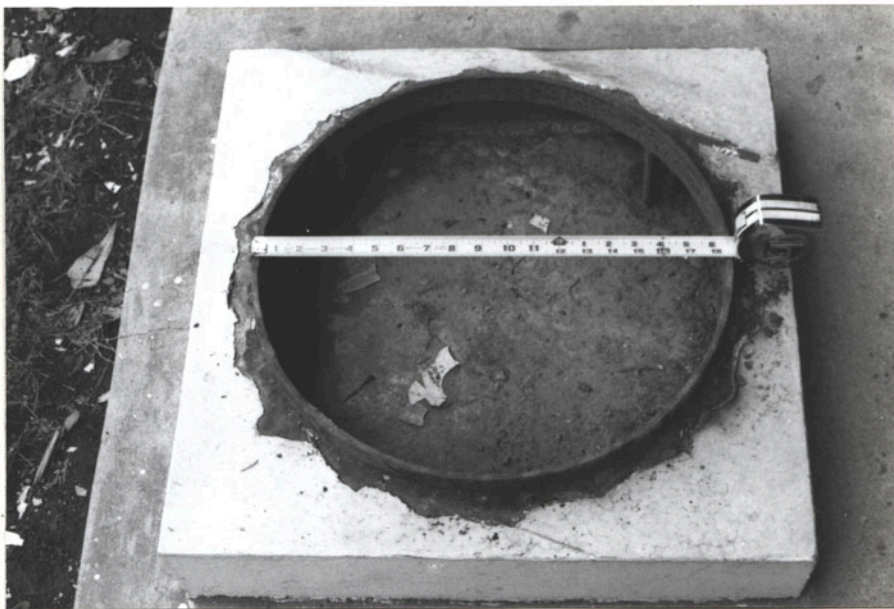
Bricks were tinted cement, not burned clay.

This type brick can also be seen in early 20th c. roads, at hse at S.E. corner East St. & White Sts, H.V.

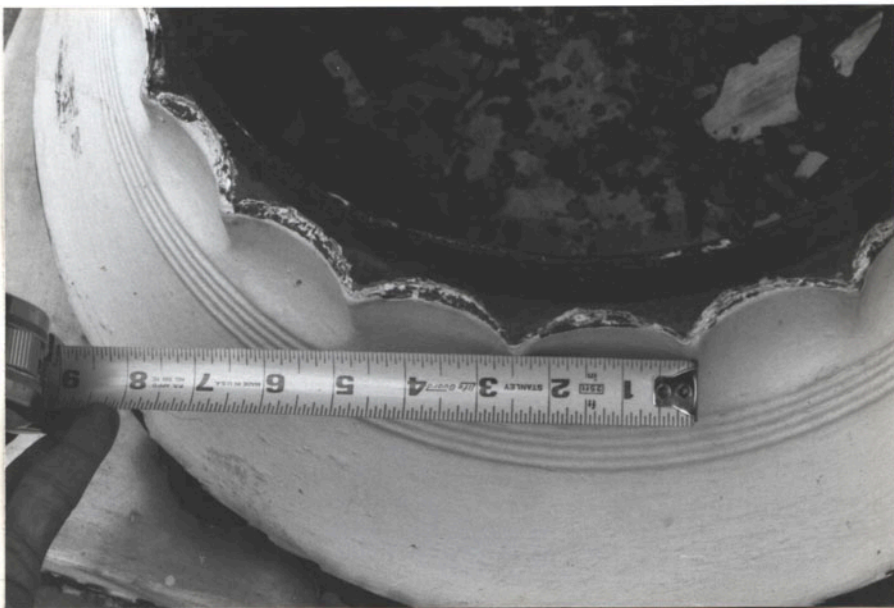
C.I. CAPITAL
(UPSIDE DOWN,
ON BASE)



C. I. BASE



C. I. CAPITAL
UPSIDE DOWN



PTOP



C. I.
COL.
CAPITOL

N-X



"bricks" are
tinted cement,
not burned clay
This "brick"
also used on
early 20th c. house
at S.E. corner of
Eustis & White
in Ltr.
(p. 10)

VEHICLE
IMPACT
POINT

2A







WALL N. OF
IMPACT POINT



ST.
ENTRY

W. ELEV.

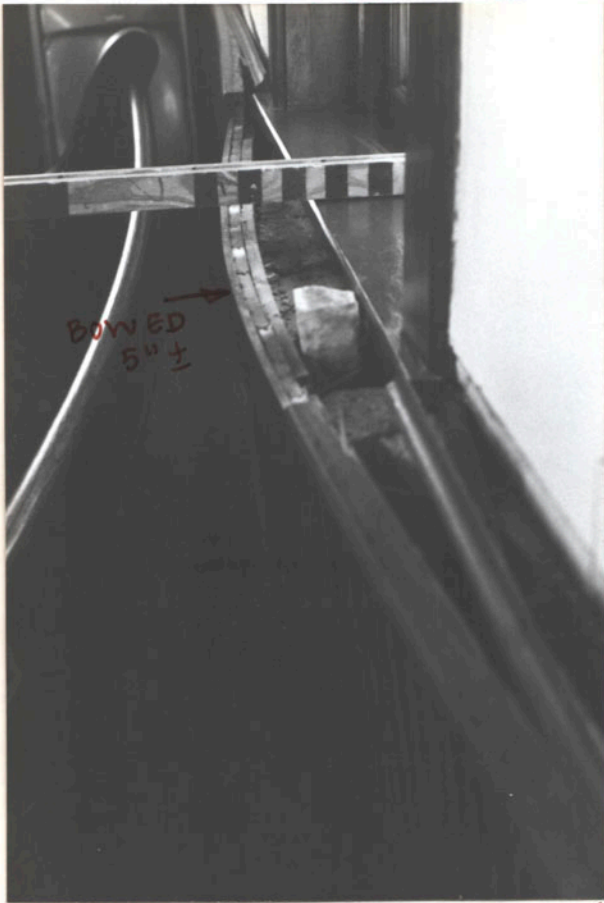


PROMINENT
PATCHING

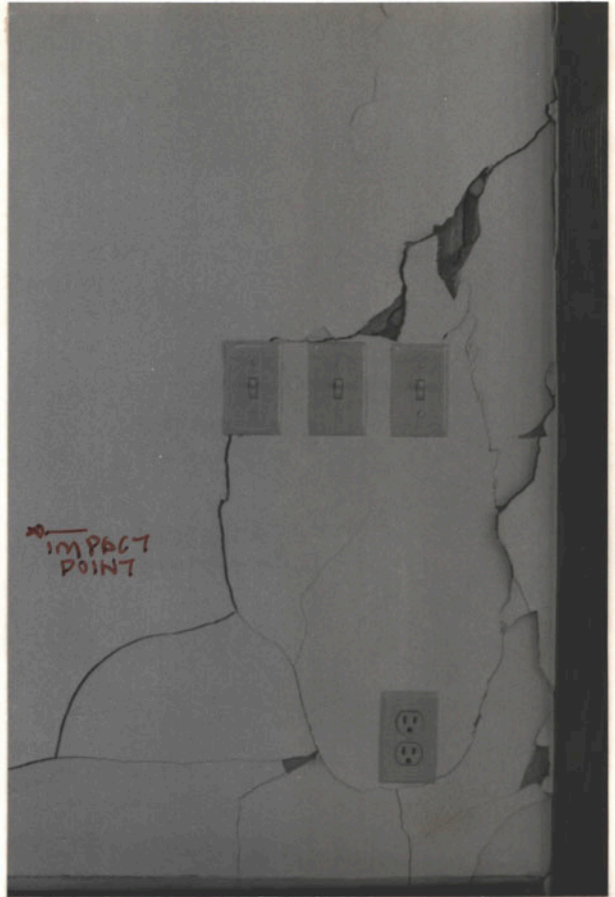
TAN PAINT
SMEARED ON
BRICK + ON
GRAY CEM.
PATCHES

N. ELEV.

WINDOW WALL



BOWED WAINSCOT UNDER WINDOW AT IMPACT POINT



WALL S. OF MAIN (ST.) ENTRY
CHAIR RAIL



MAIN ENTRY

SANCTUARY FRONT (STREET) WALL

84



N. WALL AT VEST. AREA - DARK GRAY CEM. PATCHES



S. ELEV

↑ CHIM. TO BE SOURCE
OF "PATCH" BRICKS.
REBUILT TO MATCH IN
SIMILAR NEW BRICKS.

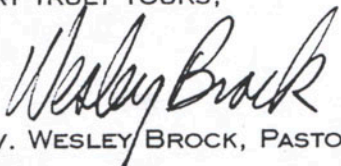
MARCH 27, 1996

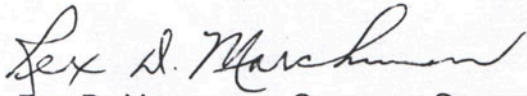
MR. HARVIE JONES
104 JEFFERSON STREET
HUNTSVILLE, AL

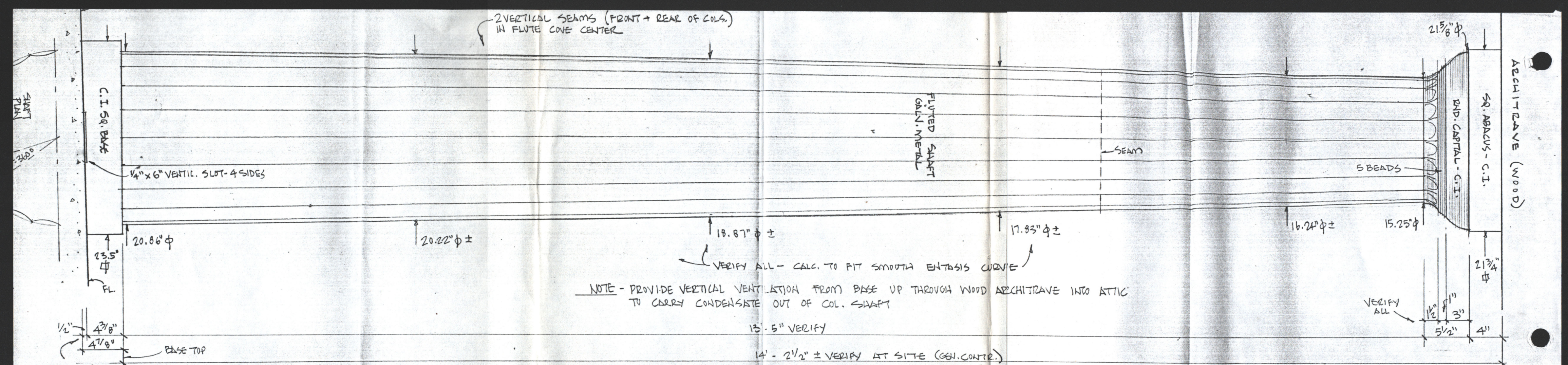
DEAR MR. JONES,

THE SESSION OF FIRST PRESBYTERIAN CHURCH OF GUNTERSVILLE WOULD LIKE TO THANK YOU FOR THE TIME YOU DEVOTED TO MEETING WITH SEVERAL MEMBERS TO DISCUSS THE FEASIBILITY OF A RAMP FOR OUR CHURCH ENTRANCE. YOUR INTEREST IN THIS PROJECT AND YOUR INVOLVEMENT IN OTHER PHASES OF BUILDING AT FIRST PRESBYTERIAN ARE GREATLY APPRECIATED. AS A RESULT OF YOUR THOUGHTFULNESS AND CONCERN, OUR CHURCH WILL CONTINUE TO BE A DISTINGUISHED LANDMARK IN THE CITY OF GUNTERSVILLE.

VERY TRULY YOURS,


REV. WESLEY BROCK, PASTOR


REX D. MARCHMAN, CLERK OF SESSION



EXIST. COL. ELEV. - 1ST PRESBYTERIAN CHURCH, GUNTERSVILLE, AL. 1 1/2" = 1'-0"

22 JUNE 1986 - HP JONES

Jones & Herrin
 Architects, A.I.A.
 104 Jefferson Street
 Huntsville, AL 35801

