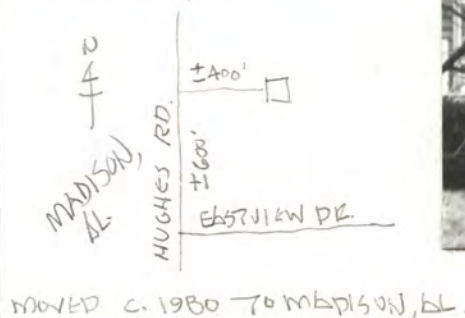
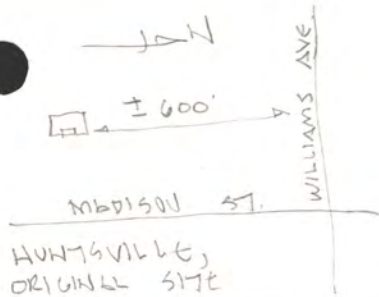


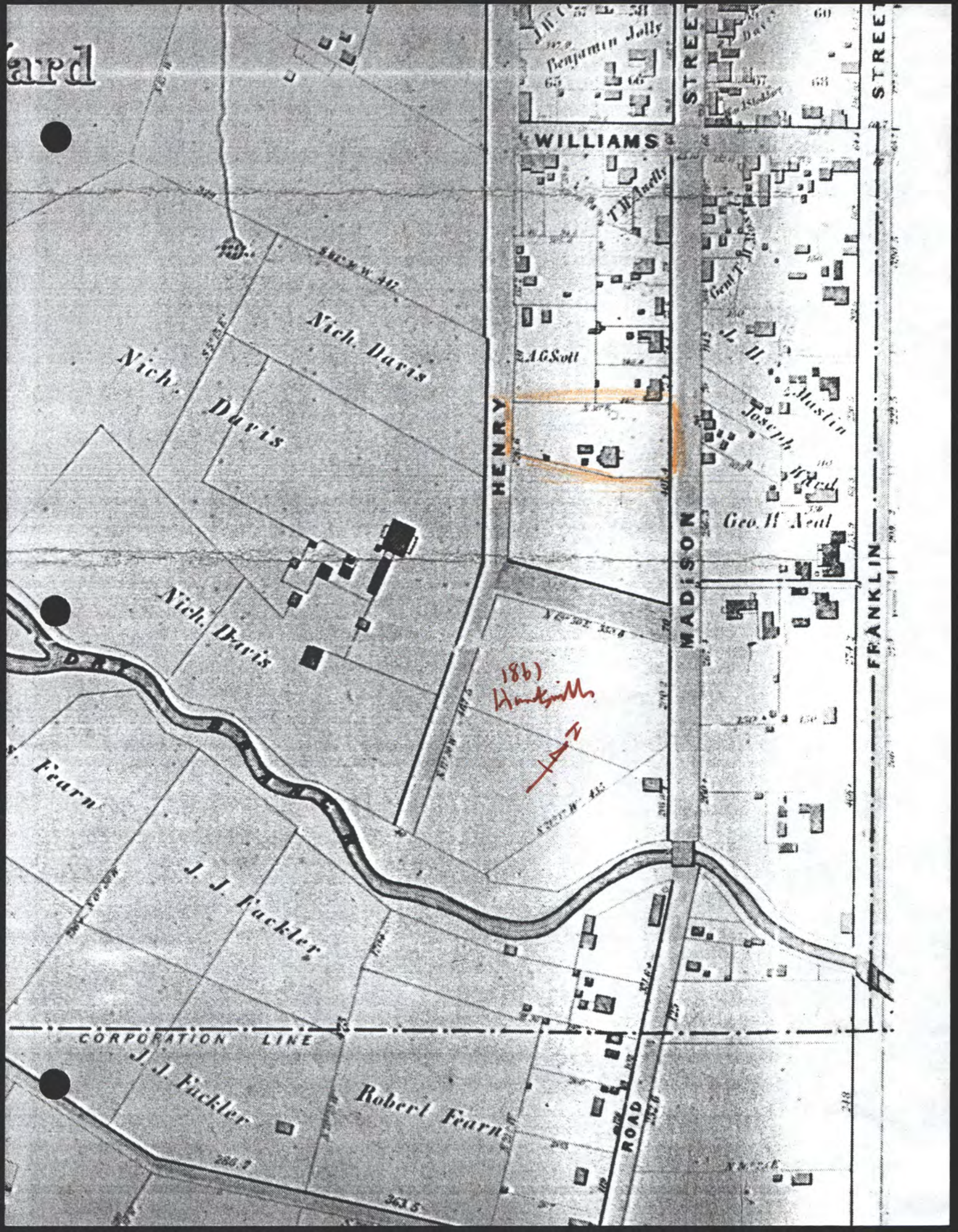
1850's Gothic Revival 1 1/2 originally on Madison St.
 S. of Williams $\pm 600'$, west side.
 Moved c. 1980 to Hughes Rd, Madison, AL.
 photos Feb. 1995 H.B. Jones



GOTHIC
 REVIVAL
 MADISON ST.
 MOVED TO
 HUGHES RD



ard



Nich. Davis

Nich. Davis

Nich. Davis

Fearn

J. J. Fackler

J. J. Fackler

Robert Fearn

WILLIAMS

A.G. Scott

Joseph
H. Austin
Geo. H. Auel

HENRY

MADISON

FRANKLIN

1861
Handwritten

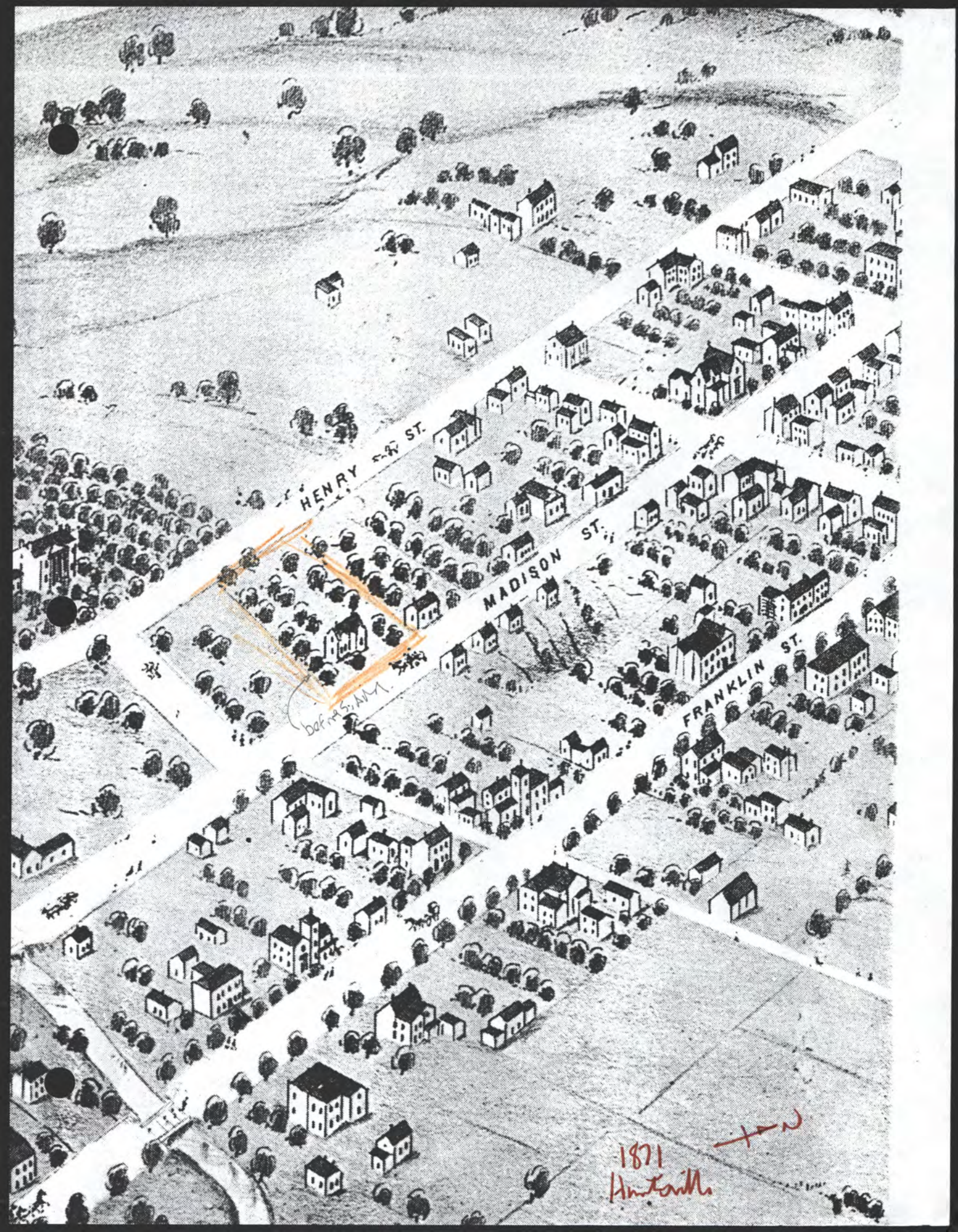


CORPORATION LINE

ROAD

STREET

STREET



HENRY ST.

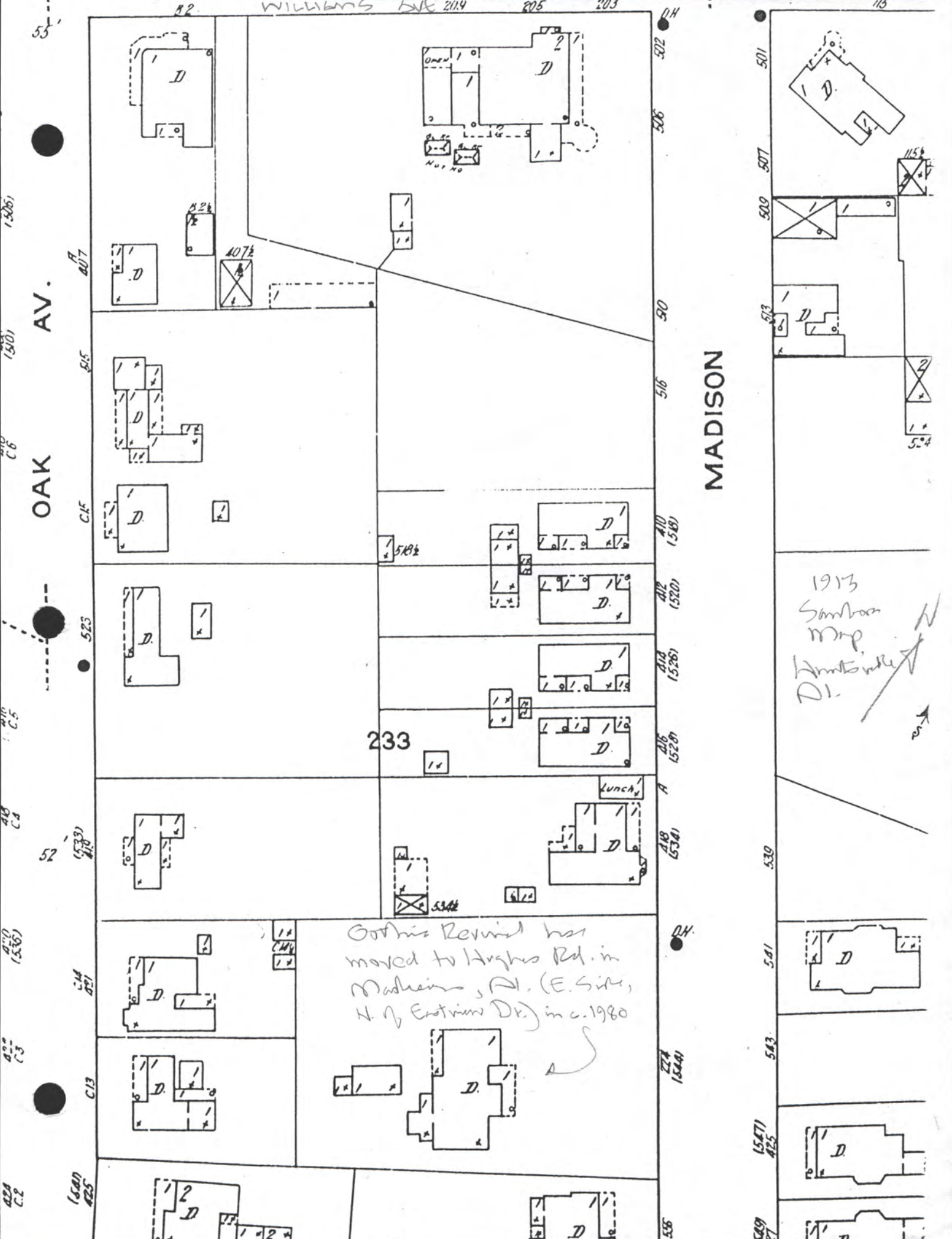
MADISON ST.

FRANKLIN ST.

Dok no 51. A.M.

1871
Antioch





OAK AV.

MADISON

WILLIAMS DR 214 205 203

233

Gothic Revival has moved to Hughes Rd. in Madison, N.C. (E. Site, N. of Eastview Dr.) in c. 1980

1913 Sanborn map
 Historic site
 DI.

15061
 1501
 C.6
 C.F.
 523
 52
 1533
 1530
 1536
 1540
 1541
 1542
 1543
 1544
 1545
 1546
 1547
 1548
 1549
 1550
 1551
 1552
 1553
 1554
 1555

502
 506
 50
 516
 410 (518)
 412 (520)
 418 (528)
 416 (528)
 418 (534)
 530
 541
 543
 1547
 1549
 555

501
 507
 500
 513
 516
 518
 530
 541
 543
 1547
 1549

115



STATE OF ALABAMA
ALABAMA HISTORICAL COMMISSION

468 South Perry Street
MONTGOMERY, ALABAMA 36130-0900



F. LAWRENCE OAKS
EXECUTIVE DIRECTOR

TELEPHONE NUMBER
242-3184

16 January 1996

Anne Simmons
795 Hughes Road
Madison, AL 35758

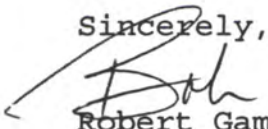
Dear Anne:

Although I am sorry to learn that you are going to sell your beautiful home, I hope that it will pass into the hands of someone who can appreciate it as much as you and Vince. Toward this end, I would strongly recommend that you either put an easement on it before you sell, or sell the property with a protective covenant on it regarding the house itself. I enclose information on the easement process as well as a sample deed with a protective covenant written into it.

Yours is truly a landmark house -- a rare example in the Tennessee Valley of Gothic Revival residential architecture. In fact, I know of no other example in your area of the "carpenter's Gothic cottage," as such houses are sometimes known. ("Cottage" is of course a euphemism, since oftentimes such houses were large and spacious -- as in your own case.) Alabama has few good examples of Gothic Revival residential architecture, which was popular in the 1850s and 1860s, and was especially so in the North. Here in the South, a number of smaller Episcopal churches were erected in this style. I have also observed that a surprising number of those who built HOUSES in the same style were Episcopal laypeople or clergyman! In America as a whole, the style was associated with learned and cultivated people, especially Anglophiles who revered and imitated British culture!

I hope that I or someone else from our office can photograph the house in the near future. Meanwhile, please stay in touch as your plans unfold. I am sending a copy of this letter to Huntsville architect and preservationist Harvie Jones, so that he can be aware of your situation.

Sincerely,


Robert Gamble
Architectural Historian

Enclosures
cc: Harvie Jones, FAIA