

CHASE AL. DEPOT
 ON OLD NC & ST. L. + SOU. R.R.
 BUILT SEPT. 1937 BY THE
 NURSERY, NOT BY R.R.
 PHOTOS SEPT. 13, 1986 HP JONES
 N. AL. R.R. CLUB MEMBERS
 RENOVATING THE BLDG.
 (OWNED BY CLUB)

Notes in this:
 "built new 9-37"

SOU. RR →
 ↖ N



NC & ST. L. RR →

N →
 NC & ST L
 ↘



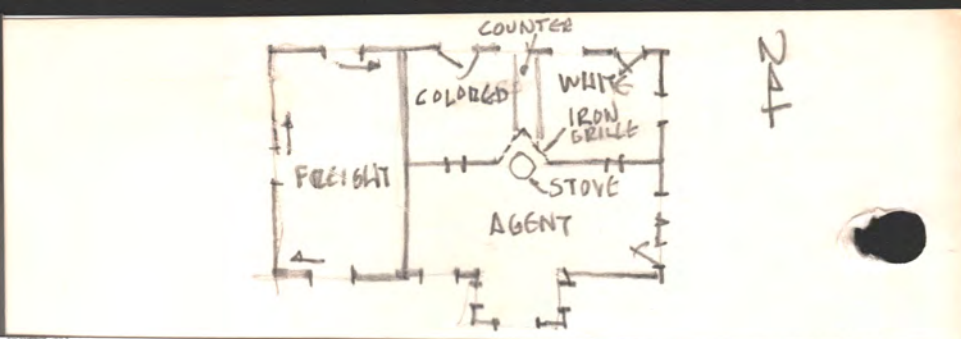
N →



CHASE AL. DEPOT



N. SLID. DOOR



LUDOWICI
CLAY TILE ORIG. ROOF
(STILL MADE)

N

SYN. ROOF

STUCCO



N

N



W 7



MAX

AGENTS
ALONE



WEST SLID. DOOR → N

CHASE DEPT
3 of 5

S.E.
DOOR
NOT





COUNTER
↑
↑

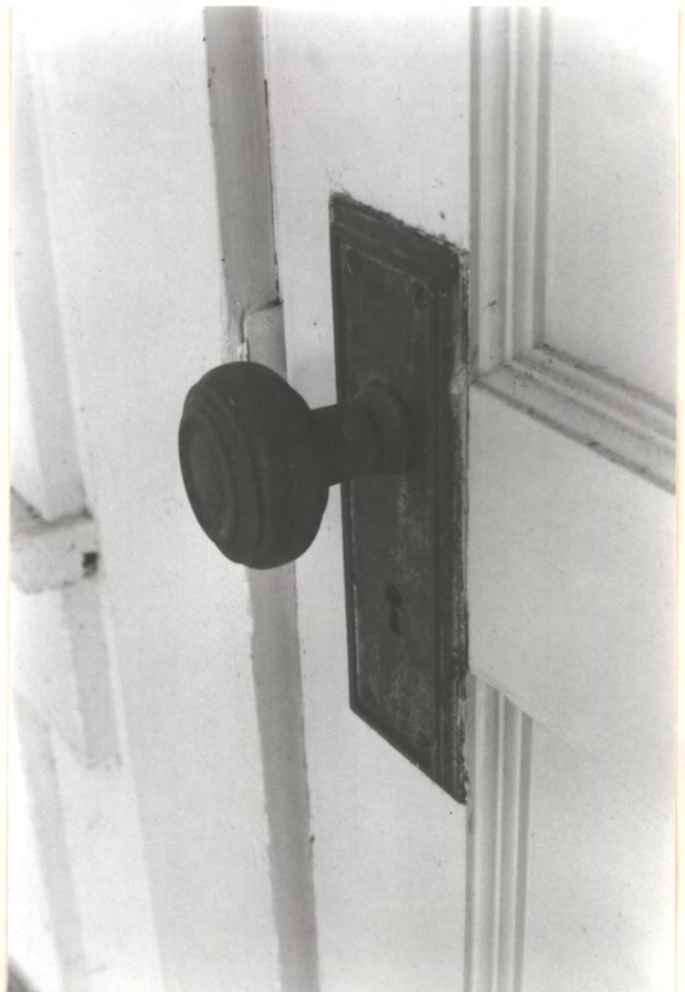


N
A

N. E. WAIT. RMS (WHITE + COLORED)



N
A



N
A

A



R.R. TRACKS
→→

Chase, AL. Depot in N.E. Huntsville - built early 20th. c.
Under restor. by N. AL. R.R. Club
(Hugh Dudley)
Photos 25 Mar. 1989 HP Jones, FAIA
(1937?)

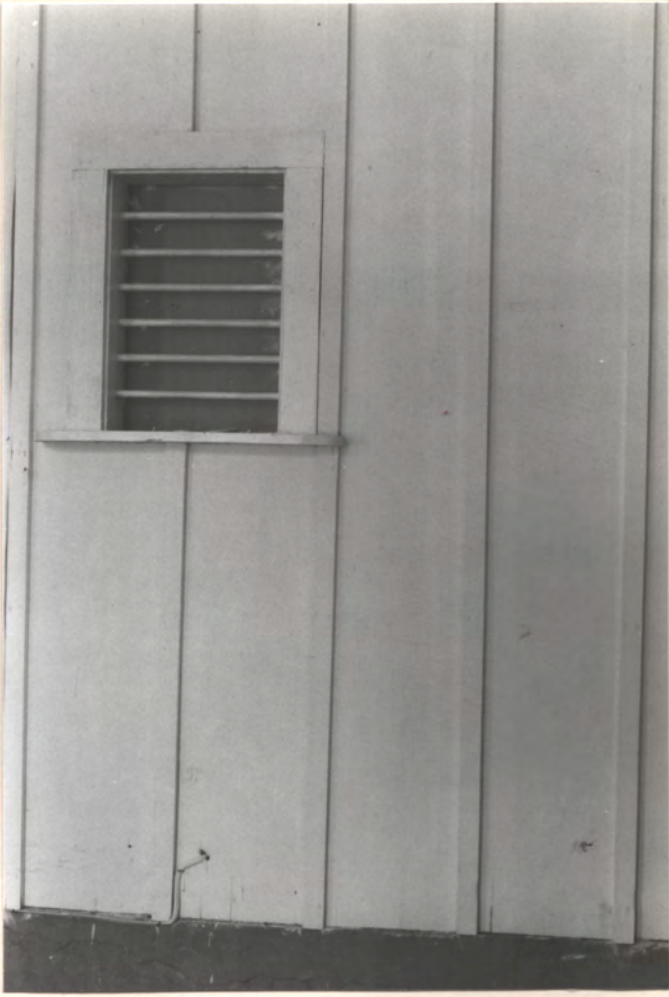


Not

TICKET WINDOW

Not

N.E. WINDOW IN WHITE WAIT.



TRIANGULAR OPNG WAS OPEN TO GRILLE, HAD STOVE IN TRIANGLE. SEE LEFT



AGENTS



AGENTS OFF

WAIT.

TICKET WINDOW

N
A

YAH
CHASE
DEPT
5 of 5

GRILLE WAS OPEN TO STOVE



454



2 ft. off. entry



pass entry



photos Aug. 1998
H.P. Jones

depot is
between
tracks of
the
N.C. & St. L. RR
& Southern RR



CHASE AL. DEPOT - 19 teens - saved Chase Nursery
FULLY RESTORED by N. AL. R.R. CLUB - NO GOVT. \$

NS



AA

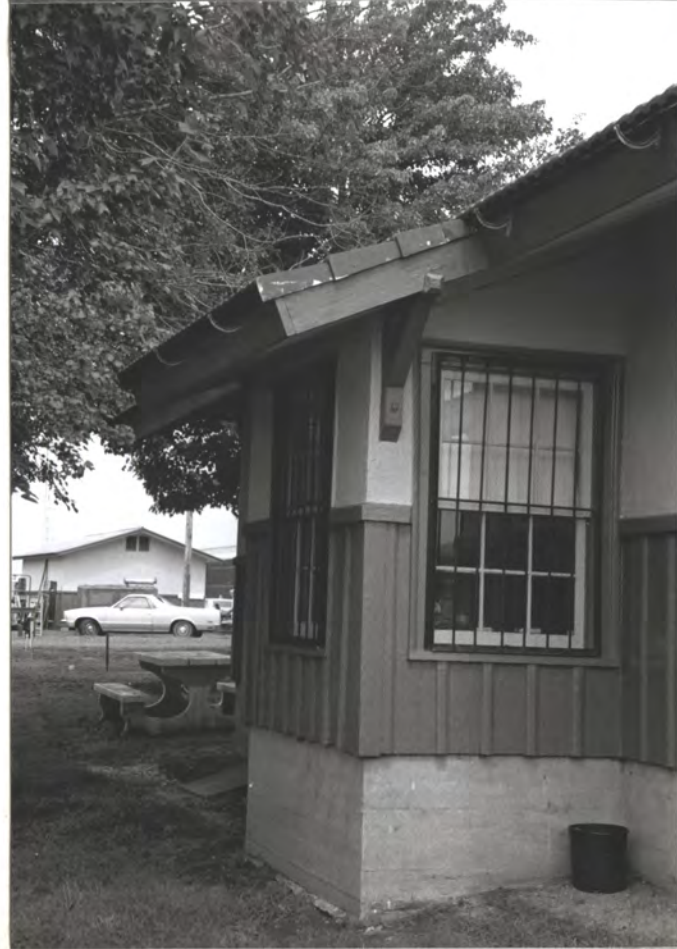


Z



Off. entry

Z



Station master
obser. Dm

N

302

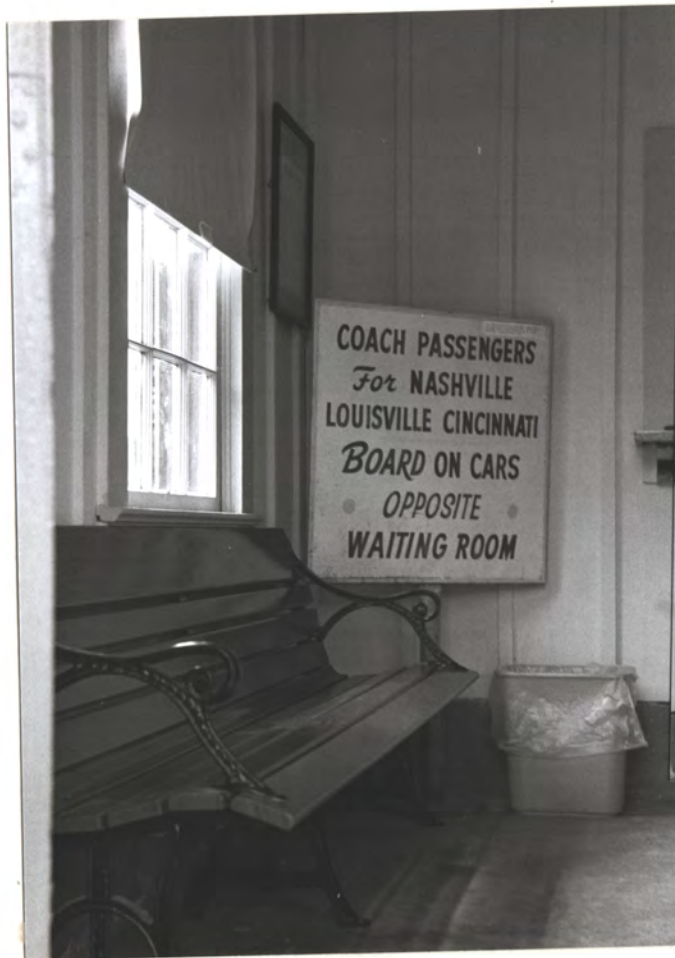


stove ↑
N. door into
Pass. Room

←
N. window of office



N. AL. R. I. Z. Club name
(was N. C. & St. L.)

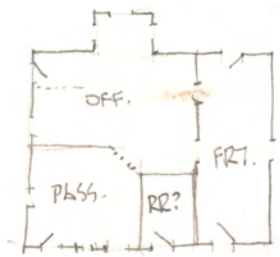


Pass. Rm.

ironing table allows
one stove (behind)
to heat 2 rooms

↑ N

TRACKS N. C. & ST. L. RR (?)



↑ N

TRACKS SW. RR (?)



North Alabama Railroad Museum, Inc.

P.O. Box 4163

Huntsville, Alabama 35815-4163

February 25, 1989

The North Alabama Railroad Museum at Chase is dedicated to the preservation of the railroad history of North Alabama and South Central Tennessee. The facility will feature the restored Chase Depot, the Mercury and Chase Railroad with its own excursion train, a walk through six car passenger train typical of those once operating through this area and freight train equipment. An extensive collection of photographs, maps, timetables, posters and items of hardware will be used in developing exhibits. Audio visual displays will utilize slides, movies and video in telling the stories of this area's railroads. The museum is expected to be open on a scheduled basis by late summer, 1989.

Of special interest will be the Chase Depot, the smallest union station in the country, a 1927 locomotive which is the first successful model of a diesel-electric design to be used commercially in this country and a operating lower quadrant train order signal dating back to the 1880s. Future plans include the operation of a dinner train, the reassembly of the old N.C.&St.L. Capshaw Depot along the line, the extension of the mainline track which will run from Meridian Street to Naugher Road when completed and the restoration of a WWII troop sleeper for a railroad research library. The library will be known as the "Veterans Memorial Railroad Library" and will be open to the public for research purposes. A restoration and storage compound is under construction at Mercury for rail equipment. The railroad may be use by Madison County to serve industry in the Industrial Park at Chase, should it be needed.

HUGH J. DUDLEY
DIRECTOR, MUSEUM OPERATIONS

(205) 881-3629

*HJ worked w/ Hugh 1972-80 on saving the
860 HV Depot & making it a museum
(+ Catherine Gillman,
Gmy Spencer)*

NORTH ALABAMA RAILROAD MUSEUM
AT CHASE
MERCURY AND CHASE RAILROAD



(205) 851-NARM
P.O. BOX 4163
HUNTSVILLE, AL 35815



(Please enclose a large self addressed stamped envelope for our reply)

INFORMATION REQUEST



Name _____

Address _____

City _____

State _____

Zip _____

Phone Number _____

Please send me information on the following:

() Membership and information on your museum organization

() Maritime excursions to Chattanooga

() Other, please state _____

N., C. & St. L. RAILWAY SCHEDULE -1924-

Decherd, Fayetteville, Columbia, Huntsville and Gadsden

FAYETTEVILLE COLUMBIA		ELORA, HUNTSVILLE AND GADSDEN	
Ex.	Sun.	Ex.	Sun.
143	141	192	194
Chattanooga.....		Chattanooga.....	
Nashville.....		Nashville.....	
Decherd, Tenn.....		Decherd, Tenn.....	
Winchester.....		Winchester.....	
Belvidere.....		Belvidere.....	
Maxwell.....		Maxwell.....	
Beas Creek.....		Beas Creek.....	
Huntsland.....		Huntsland.....	
Elora.....		Elora.....	
Fayetteville.....		Fayetteville.....	
Howell.....		Howell.....	
Fayetteville.....		Fayetteville.....	
Petersburg.....		Petersburg.....	
Talley.....		Talley.....	
Bolsat.....		Bolsat.....	
Lewisburg.....		Lewisburg.....	
So. Berlin.....		So. Berlin.....	
Silver Creek.....		Silver Creek.....	
Bryant.....		Bryant.....	
Hills.....		Hills.....	
Columbia, Tenn.....		Columbia, Tenn.....	
Elora, Tenn.....		Elora, Tenn.....	
Plevna, Ala.....		Plevna, Ala.....	
New Market.....		New Market.....	
Depot.....		Depot.....	
Bell Factory.....		Bell Factory.....	
Mercury.....		Mercury.....	
Chase.....		Chase.....	
Huntsville.....		Huntsville.....	
Huntsville.....		Huntsville.....	
Lily Flag.....		Lily Flag.....	
Fairy.....		Fairy.....	
Hobbs Island.....		Hobbs Island.....	
Incline.....		Incline.....	
Gunters Lig.....		Gunters Lig.....	
Guntersville.....		Guntersville.....	
Rayburn.....		Rayburn.....	
Lace.....		Lace.....	
Albertville.....		Albertville.....	
Boas.....		Boas.....	
Mountainboro.....		Mountainboro.....	
Carleale.....		Carleale.....	
Attalla.....		Attalla.....	
Alabama City.....		Alabama City.....	
Gadsden, Ala.....		Gadsden, Ala.....	

For local service between Nashville and Chattanooga, see Table No. 13.

Fayetteville Branch—Kasserman, Douglas, Milner, Buchanan, Bidwell, Blackwell, Orr's, Ewing, Fountain, Creek, Midvale, Elgin, Dahneys, and Rankin are flag stops for all trains. Rice & Croning is flag stop for Trains 140, 141, 142, 143, 261 and 262.

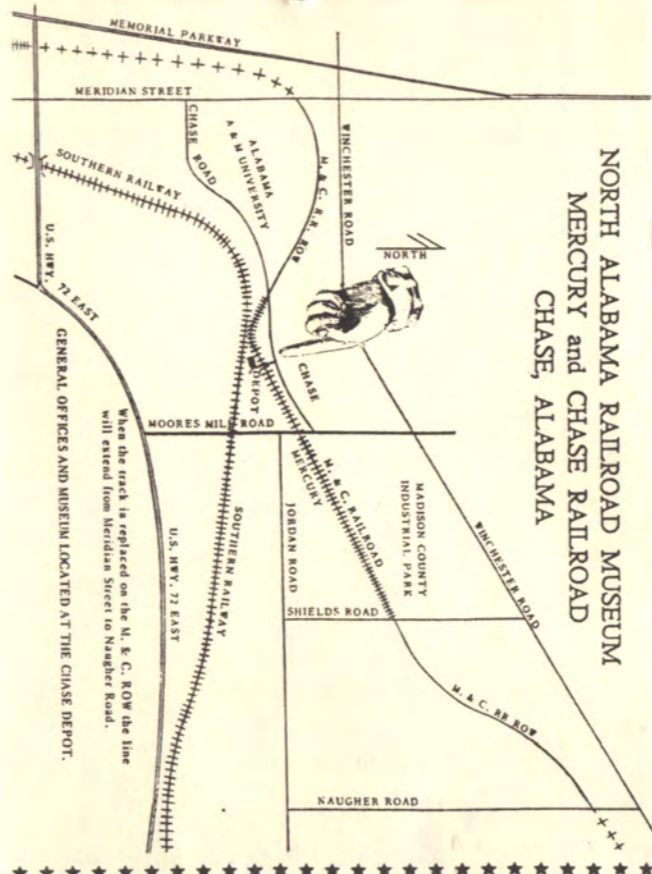
Huntsville Branch—Roseborough, Tolliver, Fanning's, Normal, Matthews, Burrows, Sligo, Littleton, and Sara, are flag stops for all trains.

TABLE No. 15. Fayetteville and Capshaw.

Miles	M. T. & A. BRANCH	240
		Ex. Sun.
0	Fayetteville, Tenn.....	10.00
5.3	Harmes.....	9.45
5.8	Tillman.....	9.38
8.0	DeFord.....	9.30
12.1	Coldwater.....	9.15
15.9	Bianche.....	9.02
18.6	Taft, Tenn.....	8.50
21.3	Elkwood, Ala.....	8.40
27.1	Toney.....	8.26
30.2	Harvest.....	8.15
35.4	Capshaw, Ala.....	8.00

Sumner's, Hobbs, Akern, Ready and Bobo are flag stops for all trains.

f Flag stop.



FOR INFORMATION, CONTACT:

CALL (205)851-NARM for
recorded information. Phone
manned each Saturday 9-10 AM

NORTH ALABAMA RAILROAD MUSEUM, INC.
P.O. BOX 4163
HUNTSVILLE, ALABAMA 35815-4163

NORTH ALABAMA RAILROAD MUSEUM



Dedicated to the
preservation of the
Railroad History of
North Alabama and
South Central
Tennessee

Home of the
MERCURY and CHASE
RAILROAD

INFORMATION, MAPS
AND
TIMETABLE

General Offices
Chase, Alabama

THE NORTH ALABAMA RAILROAD MUSEUM

Members of the North Alabama Railroad Museum, (NARM) love trains and are dedicated to preserving the railroad history of North Alabama and South Central Tennessee. Founded in 1966 as the Muscle Shoals Railroad Club, the organization has grown in scope and membership. Incorporated in 1967, the NARM is recognized by the IRS as a non-profit educational organization and all donations are tax deductible. The nearly 200 members come from every walk of life and while most live in North Alabama, many live in other states from New Jersey to California.



The Chase Depot, the smallest union station in the country, has been restored and serves as museum headquarters and for special exhibits.

The museum is located

at 694 Chase Road in the community of Chase, on the northeast outskirts of Huntsville. It features the Chase Depot, the smallest union station in the country,



Equipment on display at Chase includes a walk through train.

a walk through passenger train typical of those once operating through North Alabama and the Mercury and Chase Railroad. It is open on a limited basis on Wednesday and Saturday mornings and other times by appointment. Persons may call 205-851-NARM for a recorded message. The phone is manned each Saturday between 9 and 10:00 AM.

To date, twenty-seven pieces of major rail equipment have been preserved including passenger and freight cars and two locomotives. Five miles of the N.C., & St. L Railway line have been purchased. Track is in place on 2 1/2

miles and plans are to replace the track on the remainder of the property. The line has been named the Mercury and Chase Railroad after the only two stops ever located on this section of track.



The "Herb Murray Special" leaves Chase for Mercury and points north is shown passing the M&C Pinto rail car, believed to be the only one in existence.

A master plan has been developed for the museum and while it is unlikely the facility will be completed soon, effort is being directed to achieve specific goals. The display train is being developed and will contain a Post Office car, a baggage car, day coach, diner and Pullman sleeping car and will tell the story of this areas train travel. The Chase Depot has a very interesting history which can be told during your visit.



The museum's mainline excursion train passes over the high trestle and I-24 as it ascends Raccoon Mountain on its way to Chattanooga. This is the trip featured by the National Geographic in their TV special, "Love Those Trains".

Future plans include scheduled excursion trains over the Mercury and Chase Railroad, a special program for kindergarten and school groups, a dinner train featuring dining car 1000, the James A. Bistline, and much more. Work is presently underway on a special storage and repair facility at Mercury for the museum's cars and locomotives. The N.C. & St. L. depot at Capshaw has been dismantled and will be relocated along the M & C.

Visitors will find a warm welcome. A member will be on hand to answer questions and serve as tour guide. There is no admission. Donations are accepted.

Alabama!
The State Of Surprises!

TRAIN FARE

The fare for the regular excursions is \$8.00 for adults and \$4.00 for children under twelve. Babes in arms (under 1 year) not requiring a seat ride free. The fare for the Goblin Special is \$7.00 for all ages. The fare for the Santa Train is \$8.00 for all ages.



The dining car seats forty and is available for luncheons, receptions, etc. This car was originally built in the 1940s as a hospital car for the U.S. Army.

LODGING AND INFORMATION

Dogwood Manor Bed and Breakfast is located at 707 Chase Road, across the street from the museum. The phone number is (256) 859-3946. For complete visitor information, contact the Huntsville/Madison County Convention & Visitor's Bureau, (256) 551-2230, or write: 700 Monroe Street, Huntsville, AL 35801-5570.



1998 Schedule of Events

1998 Grand Opening with train excursions on the Museum's M&C Railroad: April 4&5.

Regular train excursions at 1:00 & 2:30 P.M. on April 18, May 16, June 20, July 18, August 15, September 19, October 3 & 17, & November 14.

Goblin Train trips at 2:00, 3:00 & 4:00 P.M. on October 31.

Santa Train trips at 11:00 A.M., 1:00, 2:00 & 3:00 P.M. on December 5 & at 1:00, 2:00 & 3:00 P.M. on December 6.

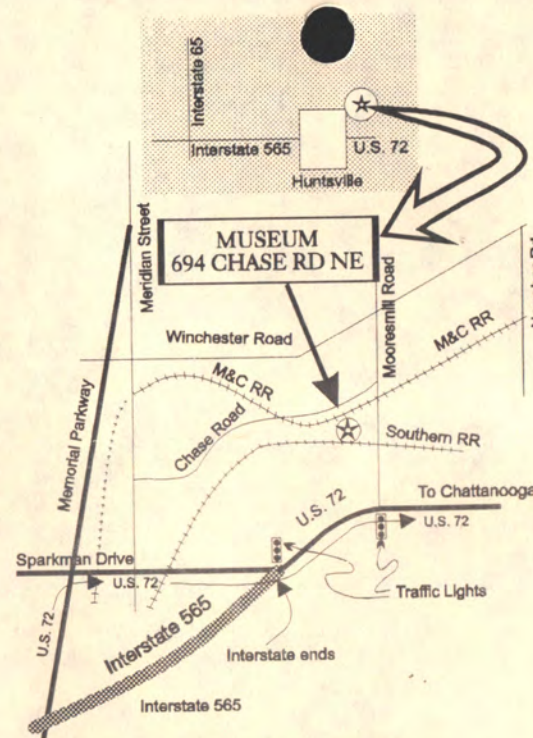
For additional information, see inside.

Mailing List

To receive future schedules and special event announcements, please either mail us your name & address or hand it to our ticket agent during your visit.



The annual Santa Train is enjoyed by those of all ages. Complete with Santa, his helpers and treats for all, it is not surprising that all trips are sellouts.



FOR INFORMATION

Call (256) 851-6276
Volunteers answer 8:30 AM to 1:30 PM each Wed. & Sat.;
a recorded message at other times.

Requests for schedules and information must include a No. 10 self addressed, stamped envelope.

NORTH ALABAMA RAILROAD
MUSEUM, INC.
P.O. BOX 4163
HUNTSVILLE, ALABAMA
35815-4163

Museum Website: <http://www.suncompsvc.com/narm/>



Dedicated to the preservation of the Railroad History of North Alabama and South Central Tennessee

Home of the



1998

THE NORTH ALABAMA RAILROAD MUSEUM

The North Alabama Railroad Museum is located in the Chase Community on the northeast outskirts of Huntsville. Here the visitor will find a unique facility reflecting a love of trains and railroad history. The Museum features the Country's smallest union station, a walk-through passenger train and the excitement of a real operating railroad. Some thirty pieces of antique railroad equipment have been saved and a major restoration effort is underway. The Chase Depot has been restored. It contains a waiting room, ticket window, agent's office and freight room. The depot contains a variety of exhibits reflecting the glory days of passenger travel. Outside is the watchman's hut, the display train and the excursion train. The display train is headed by a 1926 Box Cab locomotive, the granddaddy of today's mighty diesel electric locomotives. Presently under restoration, this little engine is expected to again see railroad service. The train contains a beautifully restored Railway Post Office car, a passenger coach and a Pullman sleeping car. The excursion train is pulled by a 1949 S2 Alco diesel electric locomotive. Passengers ride in an air conditioned coach originally built for the Pennsylvania Railroad and may visit during their ride a remodeled baggage car for sightseeing and to purchase that special souvenir.

The Chase Depot is located between Norfolk Southern's mainline between Memphis and Chattanooga, and what was once the Nashville, Chattanooga & St. Louis Railway's 1887 Huntsville Branch, which ran down from Elora, Tennessee. It is a portion of this branch line which is now owned by the Museum and operated as its Mercury and Chase Railroad. The Norfolk Southern line is very

active with 100 plus car unit coal trains traveling between the Wyoming coal field and the steam generating plants in Georgia in addition to their regular freight service.



The Chase Depot, the smallest union station in the country, has been restored and serves as museum headquarters. Here visitors purchase their tickets and may view selected exhibits.

VISITING HOURS FOR 1998

The Museum is open for visitors April through October on Wednesdays and Saturdays, 9:30 A.M. to 2:00 P.M. It is also open by appointment. Museum volunteers are present and while the formal guided tours have been temporarily suspended, visitors are welcome to view the museum facility with its restored depot, exhibits and historic railroad equipment. There is no charge; however, donations are welcomed.



The museum's excursion train is preparing to depart Chase for its run to Normal and the site of the depot which once served the students attending Alabama A&M University.

TRAIN EXCURSIONS FOR 1998

Train excursions on the Museum's Mercury and Chase Railroad offer an exciting experience of real train travel. Two types of excursions are offered, the regular trips which operate over the entire line and our children's specials on Halloween and at Christmas. The regular trips last just over an hour. The train departs the Chase Depot, travels to the site of the Normal Depot, (once serving students attending Alabama A&M University) then retraces its travel passing the Chase Depot for a trip into the County before returning to Chase. The children's specials, which are designed for children ten and younger operate between Chase and Normal and last approximately 40 minutes.



The museum's Mercury and Chase Railroad excursion train provides that unique thrill of riding a real train.

TRAIN EXCURSION SCHEDULE

April 4 and 5 are the dates for the Museum's annual Railroad History Festival and Grand Opening for 1998. The Museum will be open 10:00 A.M. - 4:30 P.M. on Saturday, April 4 and from 1:00 - 5:00 P.M. on Sunday, April 5. There will be no charge to visit the museum grounds. Admission will be charged to tour the display train and to ride the excursion train. The excursion train trips will begin at 11:00 A.M. on Saturday and 1:30 P.M. on Sunday.

Regular excursions will be run departing the Chase Depot at 1:00 and 2:30 P.M. on the following dates: April 18, May 16, June 20, July 18, August 15, September 19, October 3 and 17 and November 14.

Children's specials are: The Goblin Special at 2:00, 3:00, and 4:00 P.M. on Saturday, October 31; and the Santa Train at 11:00 A.M., 1:00, 2:00 and 3:00 P.M. on Saturday, December 5 and at 1:00, 2:00 and 3:00 P.M. on Sunday, December 6.

RESERVATIONS & OTHER SERVICES

Reservations for the train excursions are recommended since seating is very limited. All seats are reserved for passenger convenience. The museum also offers charter trips, school tours, birthday parties, and dining car facilities. The museum is open by appointment for tour groups, family reunions, and special events. Please call the Museum on Wednesdays and Saturdays between 8:30 A.M. and 1:30 P.M. for information and reservations.

Continued.



The restoration of the museum's Railway Post Office Car required nearly five years and was recently completed. Here visitors learn how the mail was once handled on the train.