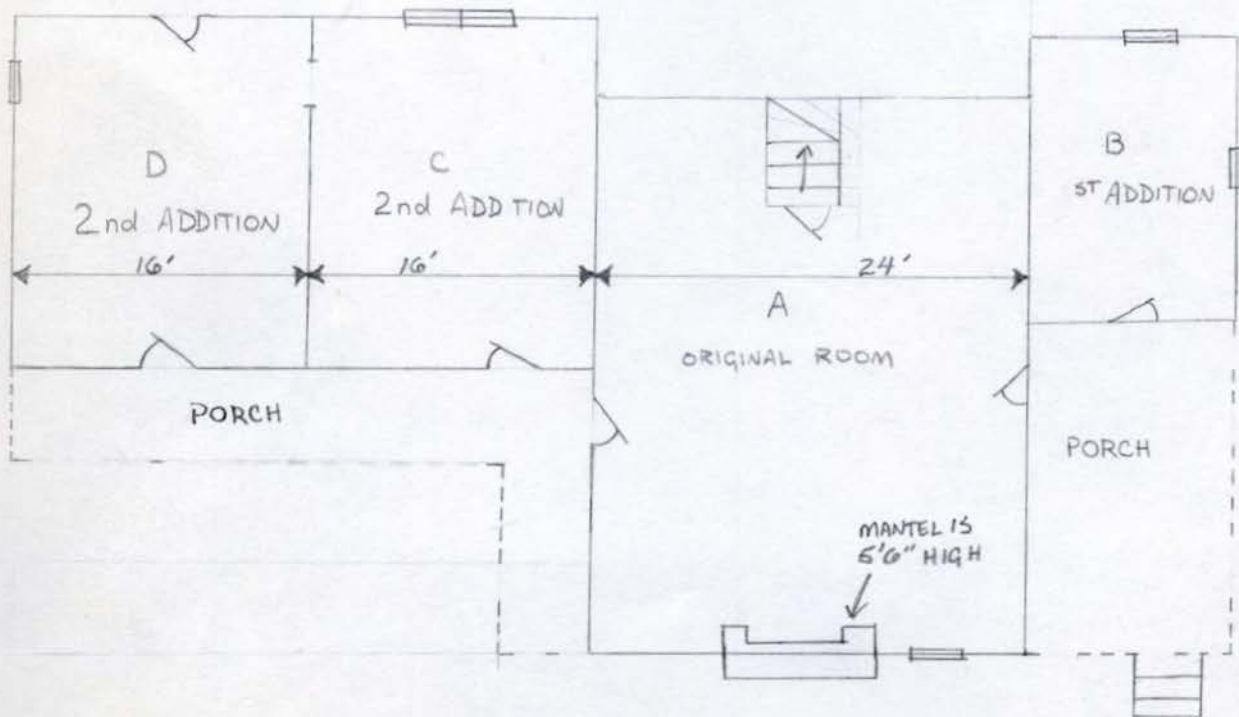
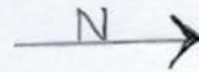
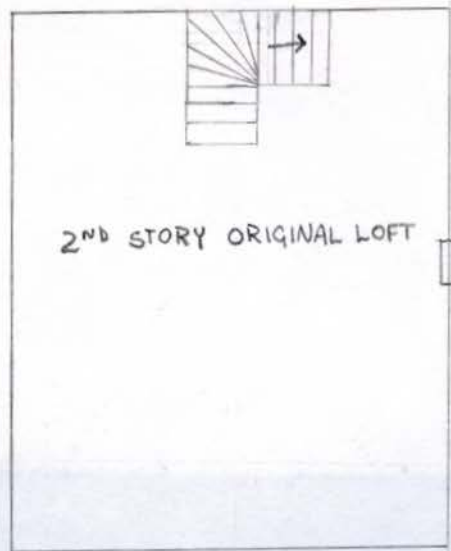


SUBLETT CABIN



SUBLETT CABIN

THE SUBLETT CABIN, A CIRCA 1842 LOG BUILDING, IS LOCATED ON MOONTOWN ROAD AND IS OWNED BY MR. HARRY BERRY.

THE ORIGINAL CABIN WAS A ONE STORY BUILDING WITH A LARGE LOFT ABOVE. TWO SUBSEQUENT ADDITIONS INCLUDED 3 ROOMS AND 2 PORCHES. THE LOGS OF THE ORIGINAL CABIN WERE ALSO COVERED WITH A WEATHERBOARD SIDING AND PANELLING WAS INSTALLED IN THE FIRST FLOOR ROOM. THE CABIN HAS REMAINED UNOCCUPIED SINCE THE DEATH OF MR. BERRY'S UNCLE 10 YEARS AGO.

21842 SUBLETT
LOG USE



NORTH FACADE



NORTHEAST FACADE



PORCH DETAIL SHOWING SUPPORTS AND RAILING DETAIL



PORCH RAILING DETAIL SHOWING POSTS NOTCHED TO
SHED RAIN



PORCH DETAIL SHOWING SUPPORT BEAM UNDER PORCH FLOOR



SOUTHEAST CORNER OF PORCH SHOWING JUNCTION OF SIDING AND RAILING



SOUTHWEST CORNER OF PORCH SHOWING
DOOR OF ORIGINAL CABIN AND WALL OF NEWER
ADDITIONS



DOORSTEP OF ORIGINAL DOOR



MAIN DOOR WITH SCREEN DOOR OPEN

EAST FACADE OF
ORIGINAL CABIN
WITH ORIGINAL
FIELD STONE CHIMNEY





← ARCH
LOG

SOUTH VIEW OF CHIMNEY SHOWING
ARCH LOG MARKING HEIGHT OF FIREPLACE

ROOT CELLAR →



EAST FACADE OF 2ND AND 3RD ADDITION

THIS ROOF NOT ORIGINAL
↙



EAST FACADE OF ADDITIONS AND SOUTH FACADE
OF ORIGINAL CABIN

JUNCTION OF ORIGINAL
CABIN AND ADDITION



← SOUTH WALL
OF ORIGINAL
CABIN AND
BACK DOOR
NOTE HEIGHT OF
DOOR COMPARED TO
ADDITION (APPROX.
5'9")

DOOR TO
ADDITION



SOUTH END OF ADDITION
SHOWING SECOND DOOR IN
EAST FACADE

← DOOR TO ROOM D

ROOT
CELLAR



WEST FACADE OF ENTIRE COMPLEX



WEST FACADE OF ORIGINAL
CABIN SHOWING JUNCTION
OF ADDITIONS



JUNCTION OF CABIN AND 2ND ADDITION
NOTE EXPOSED CORNER LOG



CLOSEUP OF SIDING ON WEST FACADE OF CABIN



DENSEST OF WEST FACADE SHOWING ORIGINAL
LOTS AND CHAIRING



NORTHWEST CORNER OF CABIN SHOWING LOG NOTCHING

SAME NORTHWEST
CORNER SHOWING
STONE SUPPORTS
OF LOGS AND JUNCTION
OF 1ST ADDITION WALL



WEST WALL OF
FIRST ADDITION

← FOR DETAIL OF CONSTRUCTION SEE
NEXT PHOTO



DETAIL OF BASE BEAM AND MORTISE AND
TENON JOINTS



INTERIOR VIEW OF 1ST ADDITION TAKEN FROM DOOR
OPENING ONTO PORCH



SOUTH VIEW OF INTERIOR OF ORIGINAL CABIN



MANTEL
STANDS 5'6"
HIGH



SOUTHEAST CORNER OF ORIGINAL CABIN SHOWING
FIREPLACE



DETAIL OF MANTLE SHOWING ORIGINAL CARVING



SIDE OF MANTLE



NORTHEAST VIEW OF CABIN INTERIOR

PROJECTION
OF STAIRWAY ↘

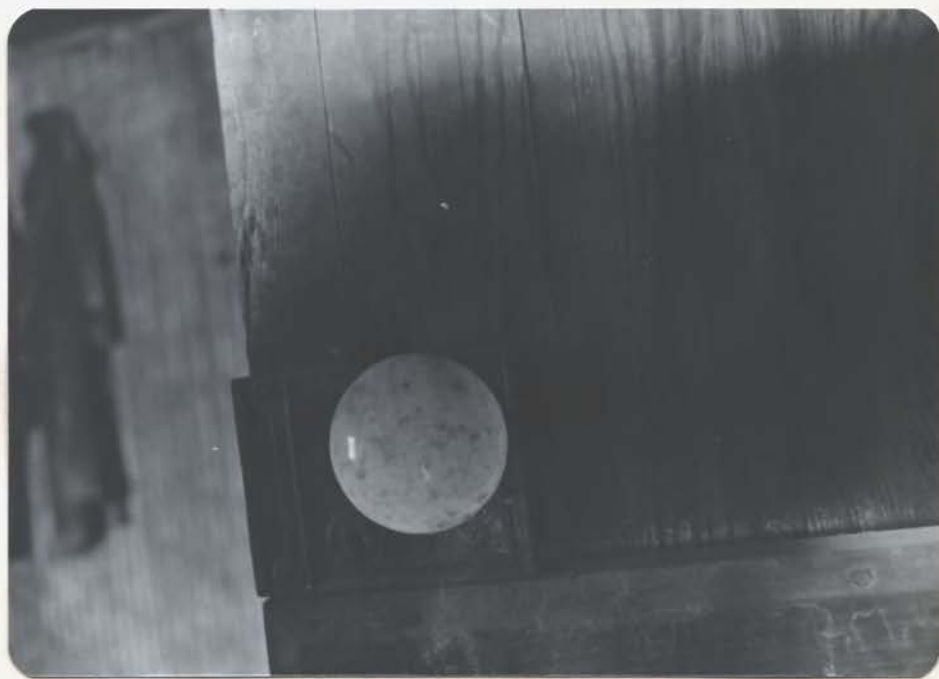


DOOR TO
1ST ADDITION

NORTHWEST CORNER OF CABIN SHOWING DOOR TO
FRONT PORCH



SOUTH WEST CORNER OF CABIN SHOWING DOOR TO
STAIRWAY



DETAIL OF LOCK ON STAIRWAY DOOR



← LOGS

STAIRWAY TO LEFT - NOTE LOGS IN
UPPER PART OF PHOTO



CLOSEUP OF PANELING ON WALL OF THE
STAIRWAY



WEST VIEW OF LOFT SHOWING STAIR OPENING
FLOORBOARDS ARE OF POPLAR



CLOSEUP OF STAIR OPENING - NOTE ↑ SUPPORTS
FOR RAILING AND SINGLE RAIL AT LEFT



CLOSEUP OF RAFTING SUPPORT



SOUTH WALL AND WEST CORNER. ALL LOGS ARE
OF CEDAR



SOUTH WALL AND EAST CORNER OF LOFT



EAST WALL OF LOFT. SPLOTCHES ARE
WASP NESTS



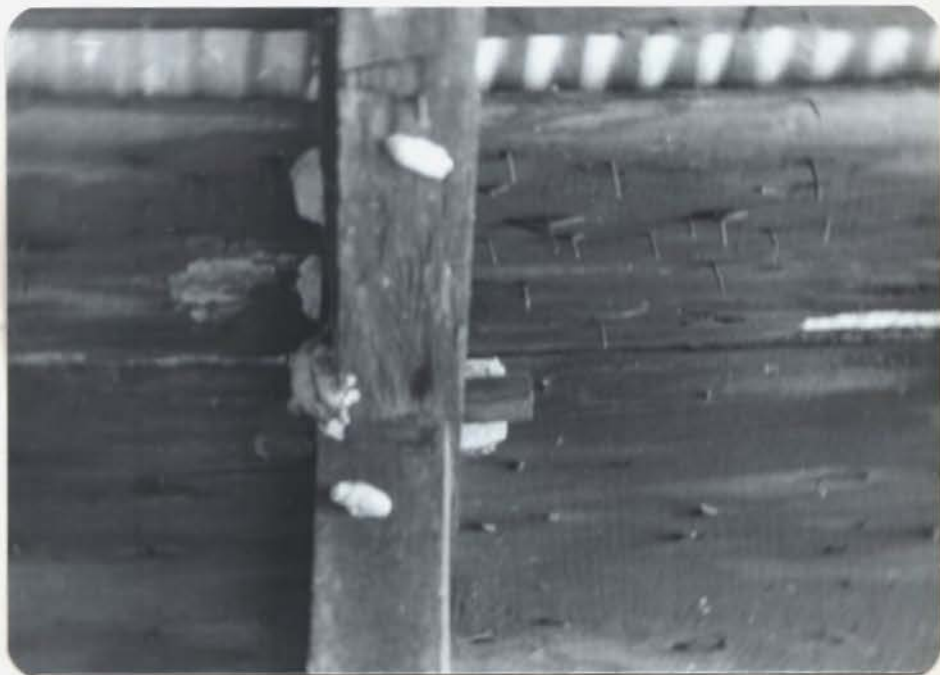
NORTHEAST CORNER. NOTE ADZE MARKS OF
BOTTOM LOG



NORTHWEST CORNER SHOWING SMALL WINDOW THAT
HAS BEEN BOARDED OVER



VIEW OF POCKET CUT FOR RAFTERS
NOTE THAT BEAM IS SMALLER THAN POCKET CUT
FOR ORIGINAL



JOINT OF CROSS GABLES WITH LARGE WOOD
PEG HOLDING THEM IN PLACE



CLOSEUP OF LOGS AND CHINKING



← DOORWAY SEEN
THRU 1ST DOOR-
WAY OPENS TO
ORIGINAL ROOM

NORTHEAST CORNER OF ROOM C, 2nd ADDITION



DOORKNOB AND LOCKBOX ON DOOR TO ROOM C

DOORWAY
TO ROOM
D, 2ND ADDITION



SOUTH WEST CORNER OF ROOM C SHOWING
DOUBLE WINDOWS IN WEST WALL

NOTE WALL
BRACING



CEILING
SIMILAR TO
THAT IN
ROOM C

SOUTH WALL OF ROOM D

↑
WINDOW CUT
INTO ORIGINAL
WALL

DOOR TO
PORCH OUTSIDE



SOUTHEAST CORNER OF ROOM D



NORTHEAST WALL OF ROOM D

DOORWAY TO
ROOM C
↙



DOORWAY
TO WEST
YARD OF
PROPERTY
↘

NORTHWEST CORNER OF ROOM D



ROOT CELLAR AT SOUTH END OF HOUSE - THOUGHT
TO DATE TO SAME TIME AS 2ND ADDITION



SIDING ON NORTH INTERIOR WALL - APPEARS TO BE
AN EXTERIOR CLAPBOARD TAKEN FROM ELSEWHERE