

436 McClung - Dr. James L. Jordan
2 story Turn-of-cent. Tudor half-timber hse, remodeled in 1925
by D. Anderson Dickley, Arch. + 1 1/2 sty. bungalow
Projecting rafter-ends cut off in 1960-70's Photos Aug 1982 H.P. Jones



North front

looking SW



looking SE.



Entry



Entry



Porte-Cochère



East
porch

cast-iron added in
mid 20th cent.
Orig. 1925 rails = wood



East porch



rear - looking NW



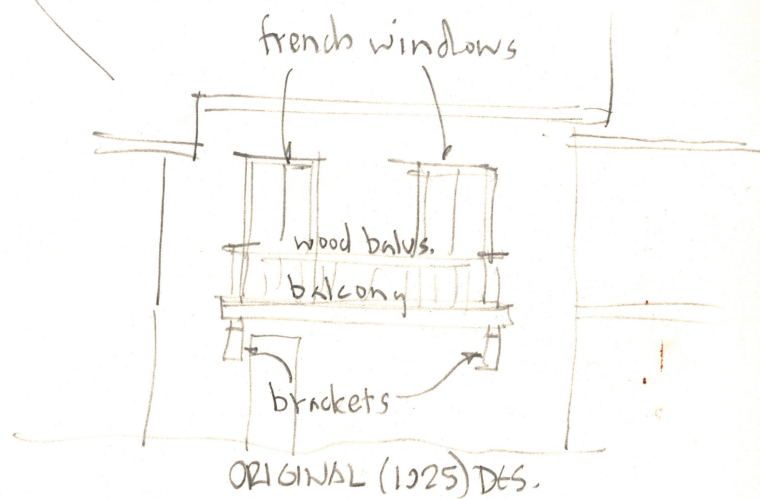
rear - looking NNE

4 of 6



"picture window" = mid 20th c.

↖ Rear, south wall ↗



Steps added
mid 20th c.



REAR

See notes on
previous pg. ↗



↖ ↗
N.W. Corner, West wall

6 of 6