

Stoop = 1920's Colonial Revival
 c.1830 c.1920's add

MUSEUM
 DISTRICT
 MISCELL.



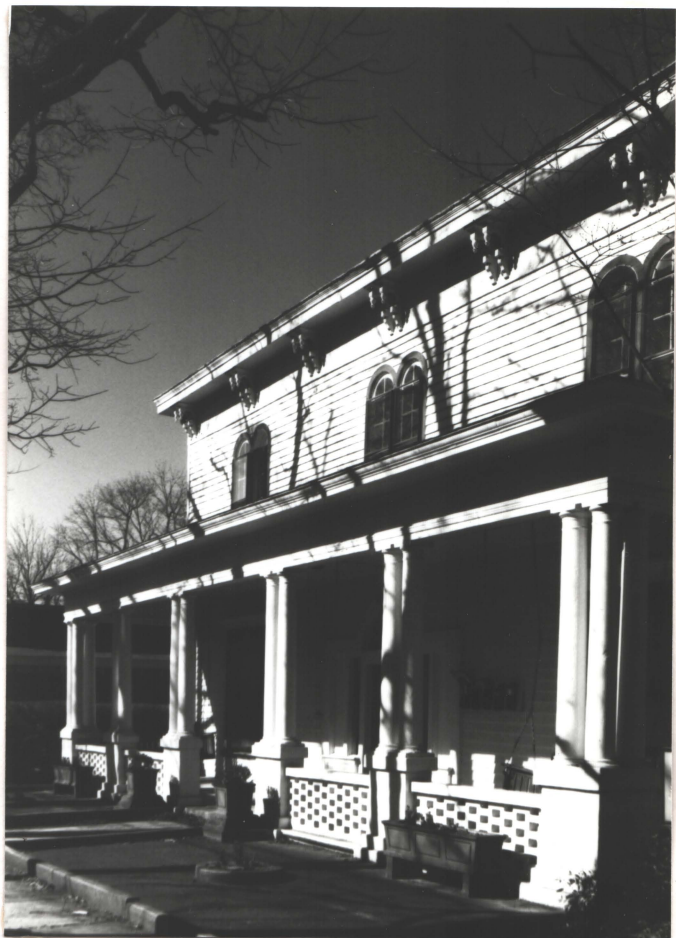
→ H

c.1830 Pardon Hse, 409 Randolph Ave

Mar 95 photos HJ



H ←



→ H

±407 Randolph Ave, Fed Period has heavily remodelled & enlarged in Italianate style (1880's?)

205 SOUTH
LINCOLN ↓



201 SOUTH
LINCOLN →

Cent. Prest. Ch.,
an enemy of
hist. pres.

Promised "gardens" here →
never built

Ch. demolished a Fed. Period here
here in c. 1975 because
"it blocked the view of their ch."

↑ Ch. gave this here to
city in 1975 to
get it out of their
way (to Condo. Village)

209 SOUTH
LINCOLN ↓



NE. Corner of East of Lincoln:
Gk. Rev. has remodelled into
bungalow style in early 20th c.

M. 95 photo A.J.M.

early 19th c. Temple
 collapsed in early 20th c.
 ADDN

409 SOUTH
 LINCOLN ↓



early 20th c. Masonic Temple
 NE corner of Lincoln & Williams



c. 1870 1st Meth Ch.
 Steeple later
 Spire later (4 friends at corner gone)

MAR 95
 photos
 AU



10816. ADDN
 1883 (+ ADD) MAYHEW 1886 512 EUSTIS AVE

Porch restri per hist photo of paint traces on her front-AU



1850s Fenwick Ave, 50x60ft or
 Porch restri JAH Arch-HU (not X-rail)



301 WILLIAMS
←

→

1930's house, N.S. Williams Ave, E. of Green St.
Portico revision proposed in 1995 by Crow, Ash, & N.E.A.M.



→

c.1860

Moor - Phyllis Ave 603 Adams St

Portico added 1920

Belvedere removed 1950's



→

Most likely c.1825-1850's
St. Mark removed,
210 Williams Ave



→