

1 1/2" THICK  
MANTEL SLAB

Mantel  
Shelf  
Sect

1 1/2"

STRAIGHT

FRIEZE

Mantel  
Architrave  
Cap

CARL T. JONES HST.  
FED. PERIOD  
H'VILLE, AL.  
GARTH RD.  
30 APRIL '92  
H.P. JONES, F.A.I.A.  
FOR JOHN BLUE, 1992 OWNER

Door basket and  
Frame = 20th C.

Base = 20th C

Fl. 2 East B.R.  
Mantel + Door  
+ Sash trim

ARCHITECT

FRIEZE

RM  
SIDE

FLUR

HALL  
SIDE

SILL

Chair Rail (removed)  
+ Sash Sill

Apron

Sash Jamb

Swell

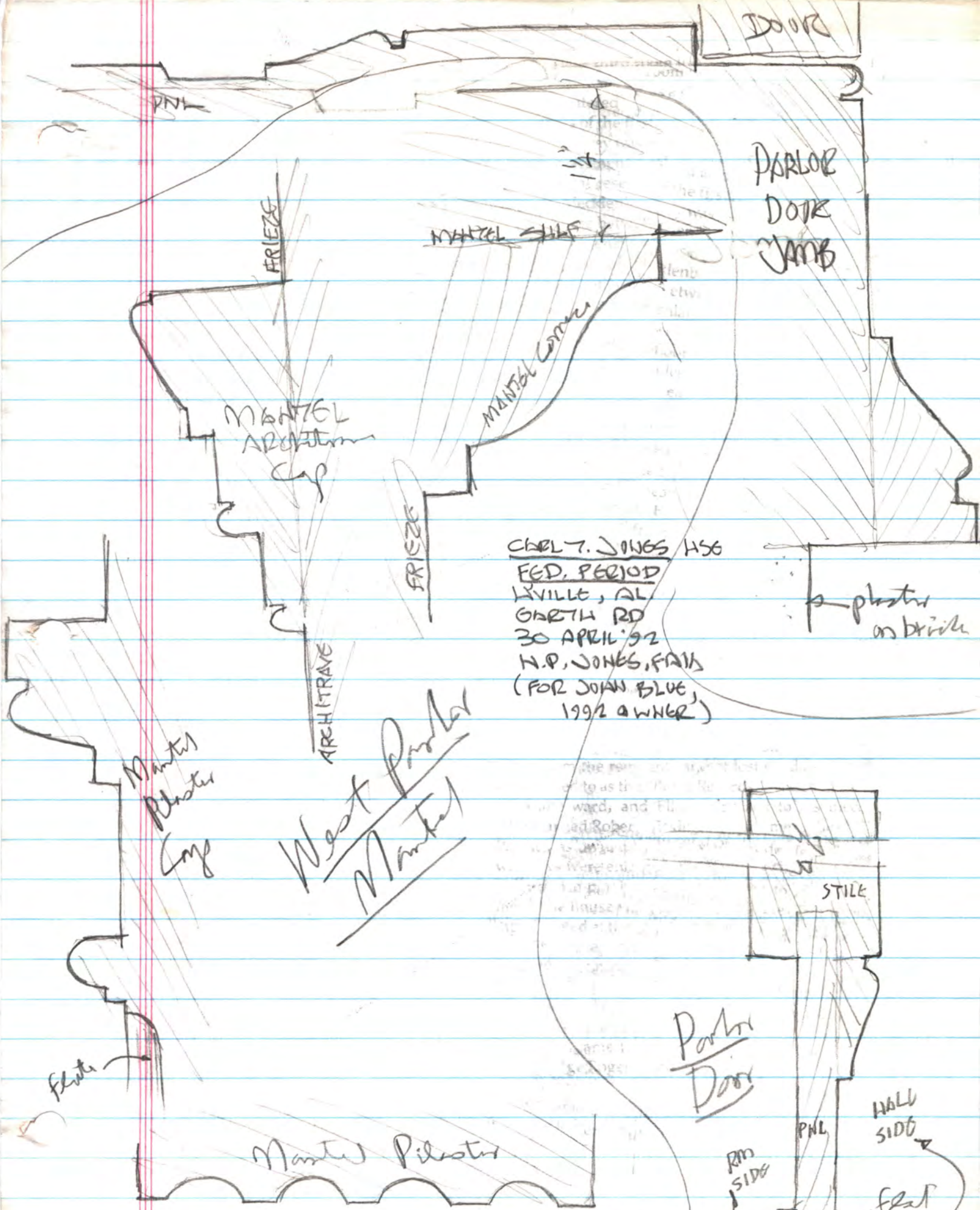
Swell

Mantel Pilaster Cap

26 1/2" CE SILL

Mantel Pilaster Plan

Mantel  
Pilaster  
Base



CHARL T. JONES HSG  
 FED. PERIOD  
 LYVILLE, AL  
 GARETH RD  
 30 APRIL '92  
 H.P. JONES, FAHS  
 (FOR JOAN BLUE, 1992 OWNER)

DOOR IS REVERSED (HINGES)

Plan like original plan of Drake-Cuthbert-Jones-Hill

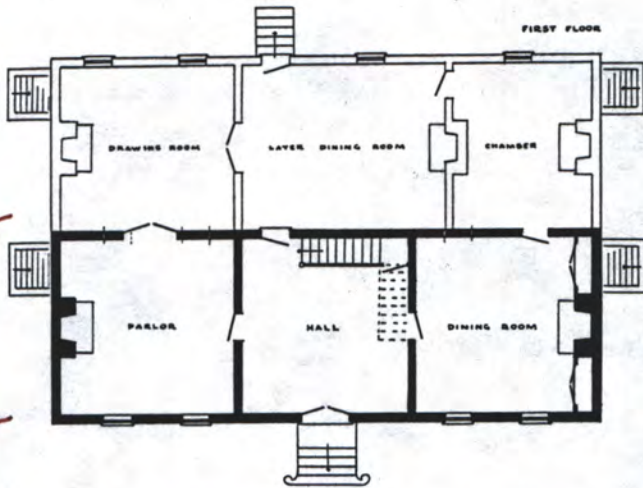
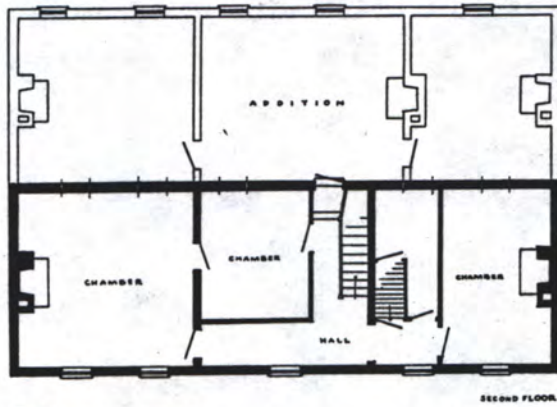


Fig. 4.12 Floor plans indicating the two building stages of Ellerslie (ca. 1787, shaded; early 1800s, unshaded) near Lexington.

when Levi inherited a hundred acres from the estate of his brother, John, who was killed at the Battle of Blue Licks. The large room on the first floor in the middle of the extension became the new dining room, with double doors opening from it into the drawing room, which was similarly connected with the parlor. Cooking was performed in a detached



Fig. 4.13 Restored sketch of Ellerslie after enlargement.

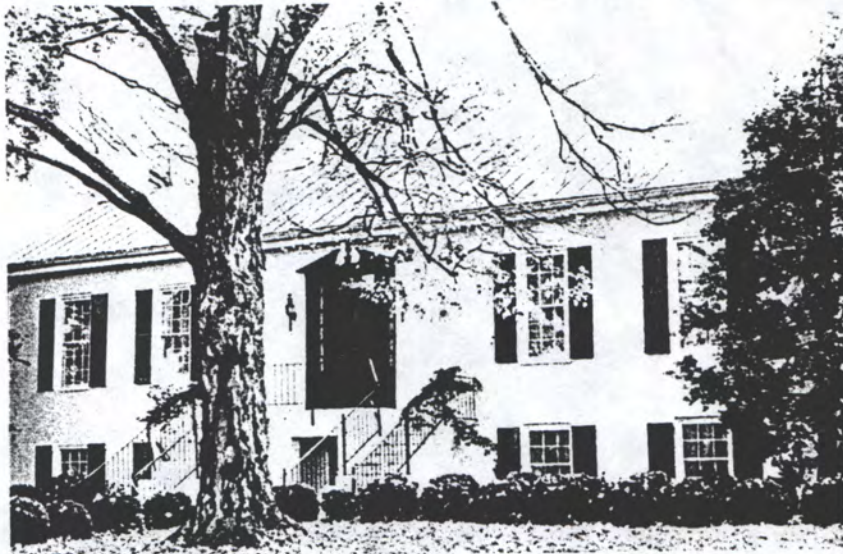
kitchen. The third room in the addition on this level was probably used as a chamber. Upstairs, the addition was entered across a platform bridging the topmost steps of the first flight. It seems curious that no service stairway was included in the new part. Except for the placement of the chimneys, the completed arrangement resembles the plan of Prestwoud (ca. 1770) in Mecklenburg County, Virginia, but whose fireplaces are between rooms rather than on outside walls.<sup>20</sup> The enlargement of Ellerslie obscured the rear windows of the early house, leaving the two small second-floor rooms without light.

Outside, no less than inside, Ellerslie was a link between the eastern Virginia mid-eighteenth-century style and the late-eighteenth-century manner in the West. The house had stone foundations to the tops of the basement windows, and a foot or so above the stone line the brickwork at front and rear stepped in by means of a molded string or water table (fig. 4.13). A belt course at second-floor level spanned the front and right side. The upper windows were considerably smaller than those below, and all openings had a stone keystone centered on flat arches of brick. The horizontal cornices were plain, and flat raking boards were on the gable ends, cut short of the chimneys. One might expect larger windows to have been inserted in the gable ends to light the garret with the construction of the addition, but the small openings of the original structure were duplicated. Basement steps were at each end of both sections.

Levi Todd was the first clerk of Fayette County, and he kept the county records in a small stone house in the yard. It burned on 31 January 1802, destroying many documents and damaging others. Copies made from the remnants and of lost deeds solicited are referred to as the "Burnt Records." The clerk died soon afterward, and Ellerslie passed to his niece, who married Robert Wickliffe. At the time of the Civil War it was owned by Mrs. Margaret Preston. Front windows were enlarged, the doorway changed, and an entrance porch affixed. After years of abandonment, the house was razed in 1947. The small building indicated at the left of the residence in figure 4.13 was a brick dependency.

LOCUST GROVE. William Croghan emigrated from Dublin to Philadelphia in 1768 at sixteen, became involved in his uncle's landholdings in western Pennsylvania, and fought in the Revolutionary War. The major came to Louisville in the spring of 1784 with George Rogers Clark to survey for military land

# Drake-Garth-Jones Farm



5003 Garth Road

FROM the roadside parking area on Highway 431 there is an excellent view of a rich green valley, in the center of which stands the white brick, country home of Mrs. Carl T. Jones. Perhaps William and James Drake also thought this a beautiful cove when they bought it at the government land sales in Nashville on September 18, 1809, just a month after the first lands were sold in Madison County. From that time until the present this land has been farmed.

In 1881 the Drakes sold the farm to Winston W. Garth whose home, Piedmont, stood just over the hill on Whitesburg Drive. In 1940 Edwin and Carl Jones purchased the land from the

Garth estate and redeveloped it into a cattle and fescue farm.

Carl Jones, the youngest son of G. W. Jones who in 1886 established the present-day engineering firm by that name, was for many years active in promoting the development and expansion of Huntsville. As a tribute to his outstanding leadership the field surrounding the Huntsville-Madison County Jetport was named in his honor.

The home, located about half-way down Garth Road, is believed to have been built around 1823 by James Drake. The original raised cottage contained six rooms. On the sec-

64

ond floor were located the parlor and bedrooms while the kitchen, dining room, and store rooms were on the lower level, thirty inches below ground level. Two porches, one on the front and another on the side, have been replaced by a double stairway entrance at the front. Originally there was no interior staircase, but a beautiful walnut stairway has been added in what is now an entrance hall made from the center room on the second floor.

In the parlor the beautiful hand-carved woodwork and paneled door facings are typical of the workmanship of the 1820's. The original cherry floors on the second floor have been covered by carpeting as have bricks on the basement level.

When the Jones family bought the home, they reworked the floor plan to retain the distinctive features of the old and yet combine it with the comforts of the new. With the addition of a two-story ell, the home now contains a parlor, entrance hall, four bedrooms and two baths on the second floor and a living room, kitchen, dining room, den, and storage rooms on the ground floor.

The old servants' quarters and barns have long ago been cleared away, and the site now contains all the modern buildings necessary to the efficient running of a 3,000-acre fescue-seed and cattle farm. Of special interest is a large seed house designed and built by the Jones brothers to take care of the drying and sacking of Kentucky-31 fescue.

Mount ornaments are

c. 1960 Olive-oss.

Carolyn Jones Blue helped her mother  
give them on. WJ 1992

Glimpses into Antie Borman  
Jones of Huntsville  
AAUW 1986 E.A.

# The Drake-Garth-Jones Farm

39



5003 Garth Road

From the roadside parking area on Highway 431 there is an excellent view of a rich green valley, in the center of which stands a white brick country home. Perhaps William and James Drake also thought this a beautiful cove when they bought it at the government land sales in Nashville on September 18, 1809, just a month after the first lands were sold in Madison County. From that time until the late 1980's this land has been farmed.

In 1881, the Drakes sold the farm to Winston W. Garth, whose home, Piedmont, stood just over the hill on Whitesburg Drive. In 1940, Edwin and Carl T. Jones purchased the land from the Garth estate and redeveloped it into a cattle and fescue farm.

Carl T. Jones, the youngest son of G.W. Jones, who in 1886 established the present-day engineering firm by that name, was for many years active

in promoting the development and expansion of Huntsville. As a tribute to his outstanding leadership, the field surrounding the Huntsville-Madison County Jetport was named in his honor, as is a major street in southeast Huntsville.

Also an outstanding community leader, Mrs. Carl T. Jones continued to reside in the home until her death in 1991. She was active in the arts and supported many organizations in the community as a volunteer.

The home, located about half-way down Garth Road, is believed to have been built around 1823 by James Drake. The original raised cottage contained six rooms. On the second floor were located the parlor and bedrooms while the kitchen, dining room, and store rooms were on the lower level, thirty inches below ground level. Two porches, one on the front and another on the side, have been replaced by a double stairway entrance at the front.

©1992 BROWN BANK

Originally, there was no interior staircase, but a beautiful walnut stairway has been added in what is now an entrance hall made from the center room on the second floor.

In the parlor the beautiful hand-carved woodwork and paneled door facings are typical of the workmanship of the 1820's. The original cherry floors on the second floor have been covered by carpeting as have bricks on the basement level.

When the Jones family bought the home, they reworked the floor plan to retain the distinctive features of the old and yet combine it with the comforts of the new. With the addition of a two-

story ell, the home now contains a parlor, entrance hall, four bedrooms and two baths on the second floor and a living room, kitchen, dining room, den, and storage rooms on the ground floor.

The old servants' quarters and barns were cleared away long ago. The site now contains all the modern buildings necessary to the efficient running of a major fescue seed and cattle farm. Of special interest is a large seed house designed and built by the Jones brothers to take care of the drying and sacking of Kentucky-31 fescue. A portion of the farm land has been turned into a spacious, attractive residential subdivision.

# Historic home is warm setting for Rotaryann

It's easy to wax poetic about the white brick family home of Carolyn Blue which stands in the rich green valley of the Jones Farm off Garth Road. With sunlight streaming on the hillside and cows grazing in the verdant pastures, it was a perfect autumn setting for the Rotaryann "Coke party" the last week in September.

Perhaps William and James Drake, too, thought this a beautiful cove when they bought it at the government sales in Nashville one September day in 1809, just a month after the first lands were sold in Madison County. Since that time until the present it has been used for farming. In 1940 Edwin and Carl Jones bought the land from the Garth estate and redeveloped it into a cattle and fescue farm.

The home is believed to have been built around 1828 by James Drake. When the Joneses bought the original raised cottage containing six rooms, they reworked the floor plan to retain the distinctive features of the old and yet combine it with modern comforts. In the parlor the beautifully hand-carved woodwork and paneled door facings are typical of the workmanship of the 1820s.

There, members were greeted by the hostess, new Rotaryann President Dell Briggs, and party chairman Liz Herrin as they arrived to pay dues and to enjoy a light repast prepared by the new board of officers. Betsy Lowe had arranged the breathtaking coral and pink roses in an antique silver urn at the serving table, and her other designs throughout the house added to the beauty of the historic residence.

It was an enjoyable time to see old friends, meet new ones and to discuss the programs, service and scholarship for the new club year before rushing back into the busy world that awaited outside the pristine white clapboard fences.

Friendship, friendship, what a perfect blendship! Corny as it sounds, that could well be the motto of the Friendship Force whose intent is bringing people closer together through international ex-

## Taking Note



**Margaret Lindberg**  
Society Columnist

change of citizen ambassadors. The local group allied together in the cause rolled out the red carpet for a regional Friendship Force picnic last Saturday from 11 a.m. to 3 p.m. at the Rustic Lodge at Redstone Recreational Area. Friendship members from Birmingham, Montgomery, Memphis, Estell Springs, Tenn., and Atlanta were there to have a good time and to check out the food. Also there for the southern hospitality were 13 visitors from New Castle-Upon the Thyne, England, who will spend the week in homes of Huntsville Friendship Club members.

Since the Huntsville club was formed four years ago, the group has traveled to England, New Zealand, Australia, Belgium, Germany and Hong Kong in a continuous exchange program and welcomed visitors from an equal number of countries.

Firm friendships have developed over time.

For instance, this summer Charlotte and Wayne Miller welcomed a former host couple from Osaka, Japan, Akira and Komiko Mitate. Joan and Bill Robertson had the pleasure of a visit from teen-ager Griet Menshaert, whose family hosted them in the spring in Belgium. Many of the Huntsville people have revisited their foreign friends in the overseas exchange.

Friendship Force meetings are held alternate months at Trinity United Methodist Church. For more information, contact local

**Tonight**  
**October 11**

## WHAT'S HAPPENING

"What's Happening," a comprehensive community calendar, is published as a reader service each day in **The Huntsville Times**. To include an item in this calendar, write clearly the name of the event, date, time, location including street address, and telephone number. Mail information to "What's Happening," **The Huntsville Times**, P.O. Box 1487, Huntsville, Ala. 35807. To assure accuracy, information will not be taken by telephone, but readers can fax to (205) 532-4420. Notices must be received in this office at least one week prior to the event.

## Tonight

### Exhibitions

- **First Annual Symposium on Global Information Challenges**, sponsored by the Armed Forces Communications and Electronics Association, Marriott Hotel, Huntsville Conference Center, \$110 for members, \$135 for non-members, 890-8133 or 890-8106.
- **Industrial Show**, Von Braun Civic Center Exhibit Hall, 700 Monroe St., 800-638-6396 or 533-1953.

### Conventions

- **UAH Elderhostel**, Bevill Center, 301 Sparkman Drive, 721-9428.
- **North Alabama Industrial Show**, Huntsville Hilton, 401 Williams Ave., 533-1400.
- **Kaman Sciences**, Radisson Suite Hotel, 6000 South Memorial Parkway, 882-9400.
- **Alabama A&M Graduation and Professional School Day**, Amberley Suite Hotel, 4880 University Drive, 837-4070.
- **Armed Forces Communication and Electronics Assn.**, Huntsville Marriott, 5 Tranquility Base, 830-2222.

### Lectures

- **"BMD in Transition,"** featuring Dr. William Davis, consultant/former deputy PM of Ballistic Missile Defense Organization, sponsored by Armed Forces Communications and Electronics Association, Marriott by Space and Rocket Center, 7-9 p.m. 890-8133/8000.
- **"Introduction to Permaculture,"** 1210 Meridian Street, 7 p.m., dona-

## Support Groups

■ **Pathways To Parenthood** support group, Women Huntsville Hospital Medical Bldg., p.m.

## Clubs

- **Rocket City Tall Club**, tation for men at least 6-foot-10, women at least 5-foot-10. Holiday Inn-Research Parkway, University Drive, 6 p.m. 4
- **Support group for women** suffering from co-dependent childhood traumam, H.E. Center, 6:30 p.m. 772-3813.
- **Zen Meditation and Healing Arts Center**, 508 University Drive, 6:30 p.m., beginners at 882-0513 or 534-2497.
- **Duplicate Bridge**, Leeman Ferry Road, 7881-2160.
- **Bachelor and Bachelorette** social and dance, American Post 176, 2610 Triana Parkway, p.m., charge.
- **A support group for women** covering from divorce, 7:30-9 p.m. 772-3813.
- **Nicotine Anonymous**, Madison City Hall, room 100, Hughes Road, 8 p.m. 9

## Tomorrow

### Conventions

- **UAH Elderhostel**, Bevill Center, 301 Sparkman Drive, 721-9428.
- **North Alabama Industrial Show**, Huntsville Hilton, 401 Williams Ave., 533-1400.
- **Kaman Sciences**, Radisson Suite Hotel, 6000 South Memorial Parkway, 882-9400.
- **Armed Forces Communication and Electronics Assn.**, Huntsville Marriott, 5 Tranquility Base, 830-2222.
- **Alabama Episcopal Women**, Huntsville Hilton, 401 Williams Ave., 533-1400.
- **Alabama Staff Council**, Huntsville Hilton, 401 Williams Ave., 533-1400.

### Lectures

- **Master Gardener** presentation, Huntsville-Madison County Extension Office, 4747 Bob Wall Road, 7 p.m. 830-4447.

Margaret Lindberg's Taking Note column appears Sundays.

10741



H →

Date? perhaps c.1950

Eliz. (Mrs Carl T.) Jones

Photo before c.1955, before rear wing added



Folk. Remind (early 1800's)  
Dykes - Grath - Jones Hse  
5003 Grath Rd., Huntsville, AL.  
photos April 1992, Harvie P. Jones, FAIA

29



Date?  
c.1950?  
N. Front





Nelson Jones

Edith Jones (Ledbetter) ← Emily Jones (Good) ← Nelson Jones  
 Nelson Jones (Killed in WW2 Germany) ← Warren Jones ← Douglas Jones



"Grandma" Jones (Elvalena Moore Jones)

N ←



Mrs Betty Jones ← Betty Jones (Louise) ← Ray Jones ← Mrs G.W. Jones (Elvalena)

2/41

Per the mantel, this is the fl. 2 N.E. Rm (master BR)

The present glass-on ornaments were added in ± 1960 by Betty Jones



3241

Hse

All photos  
pp. 3-41 =  
April 1992 HP Jones



Green Mt  
↙

View to St. from Gorth Rd.

↘

Rnd. Top Mt.

Hville Mt. ↘

View to N.E. from hse front N.E. yard



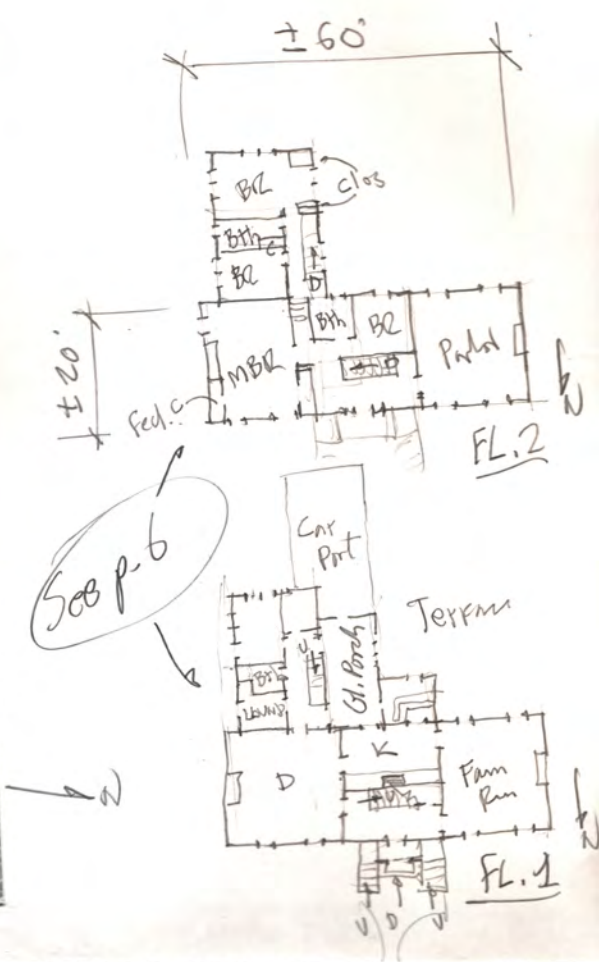
↘



North front



Steps of "pediment" at entry =  
± 1940 & ± 1970 respectively.  
No record of orig. entry design.



N.  
Front  
entry  
(c. 1950)  
See hist.  
photo  
for  
c. 1945  
configuration



5741

24

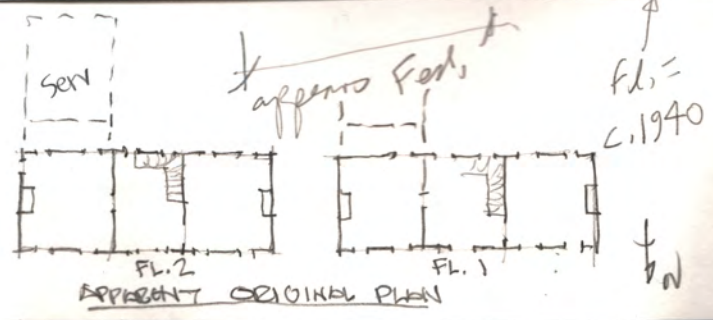


Pediment  
= c. 1970

Lt =  
c. 1970's



Door = mod.  
Appears Fed



Mod.

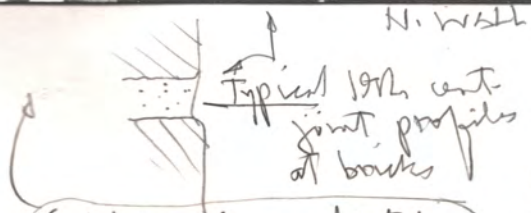


N



N

Chimney = c. 1940 addn.  
for "Warm morning" wood stove in  
center of house Mod. P.S.



Soldier-Cross lintel  
is unusual for Fed.

hand-chiseled  
limestone  
fr. N.W.  
Corner phase.

70741



note hinge - mortised for  
lost orig. blinds



All blinds = modern, nailed to  
the wall, darkwards



N ←

Brick fascia may  
be orig (?).  
Steps & thick. is right

West Wall

N ←

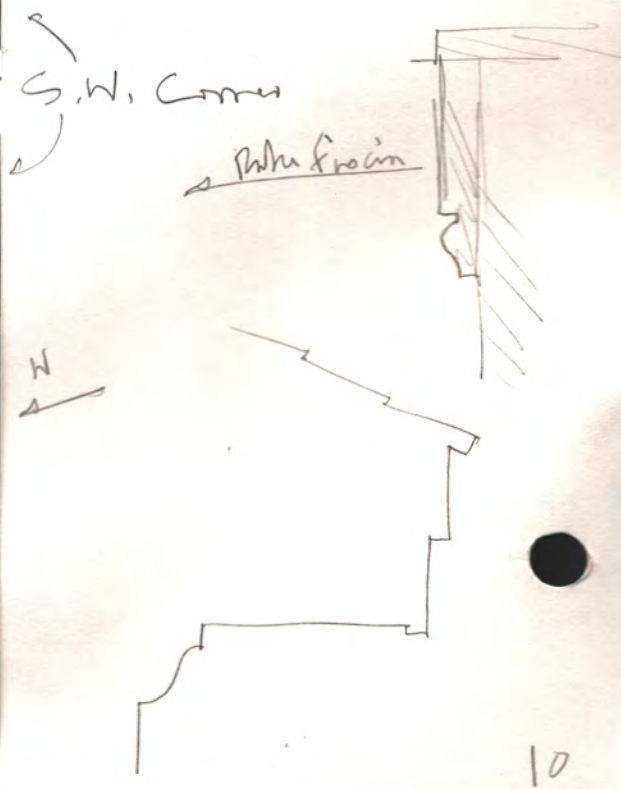
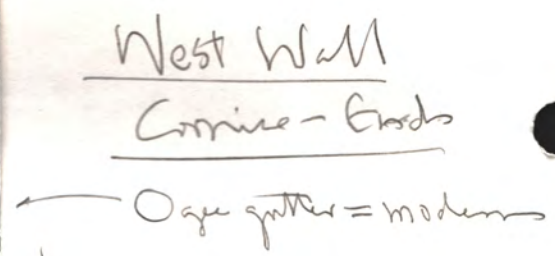
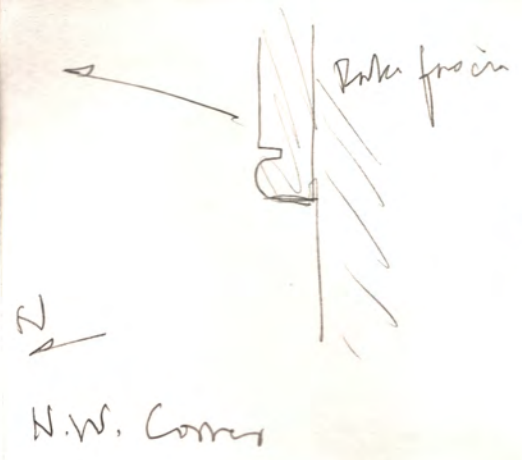


N ←

Line Stone from at west chim.

9 241

N







Terrace = latter 20th c.

Center chim. c. 1940

South Rear ↗ S.E. Wing circa 1950



Compart + Glassed Porch = c. 1968

PN

136641

N



PN



N  
↑

PH  
Wing c. 1950  
Carport c. 1965  
↓  
NW  
↑



15  
41



→ N

Wing c. 1950

Feb.



Limestone finish  
at east chim.

c. 1950

Feb.



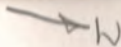


East  
Junction of  
c. 1950 S.C.  
Wing &  
Foli east wall

41

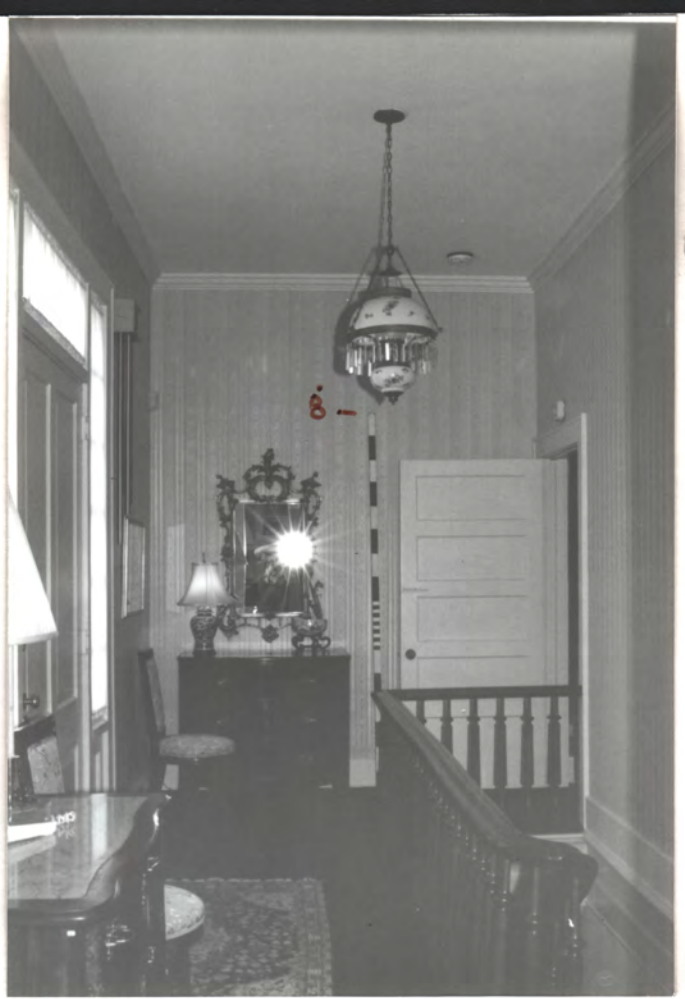


East side





→ Main entry, Fl. 2



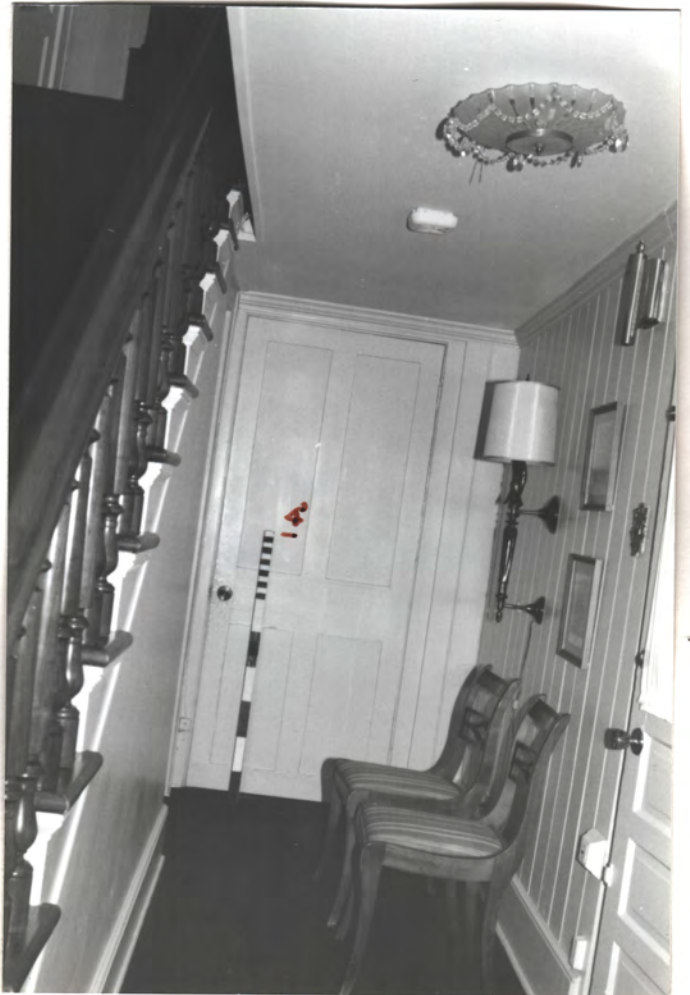
↖

Main Entry



↖

Vic. street (from west?)



Fl. 1 →



N ←



35

N →

Vic,  
57612  
at  
main  
entry.  
Don't know  
origin



36

197643

c. 1980  
mod.  
parlor



N

Fl. 2 West Parlor  
(Feb.)



N



PS Aug. 93 during renovation  
 It was observed that this mantel  
 (↓ the E. Room) was originally dark  
 = Stk. in Fed Period. Also there were  
 chair rail etches of the window sills,  
 later cut out



-5'



8'

→ N

→ N



↓ N

Fed. Mantel  
 Ornaments glued on  
 c. 1960, per  
 Carolyn Jones (Blm)  
 Marble surround = Mod.

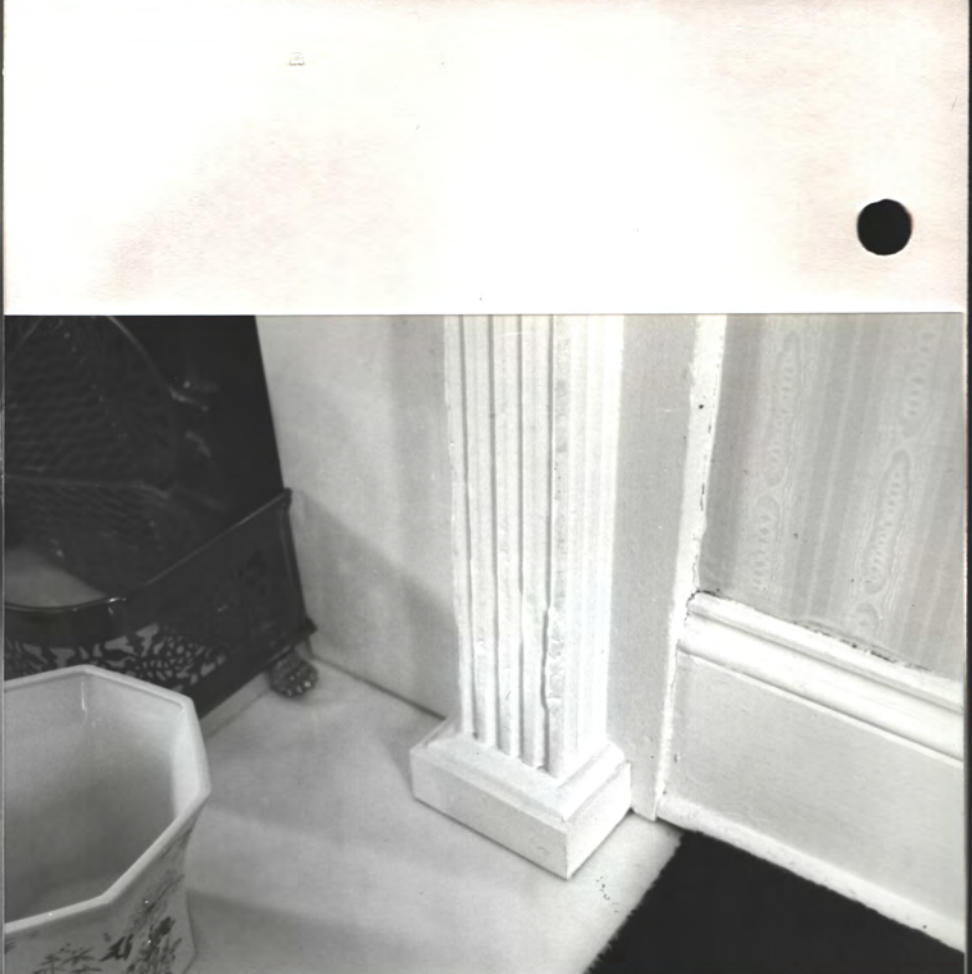
→ N

21 of 41



-5'





Fed. Mantel  
 pediment c.1980

Fed. Mantel base, Fed. wall base  
 mod. marble hearth



PH  
 All sashes =  
 c.1940



PH

blank

23741  
Aug 93 - Window sills originally were  
attached as chair rails,  
later cut out. Plaster-patches clearly indicated  
J. Blum put back incorrect rails



correct (like ~~SM~~ SM)



J. Blum installed (1993)  
= incorrect

Stain

Paneled Jamb

Note previous  
hinge mortise

Parlor

F1.2 West  
Parlor Door  
Jamb



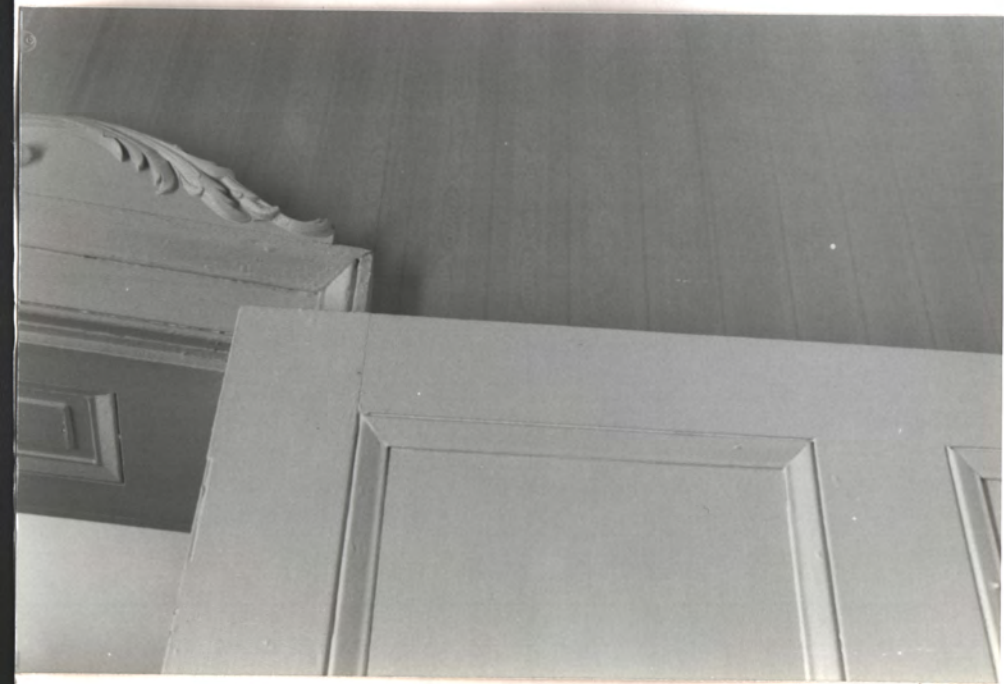
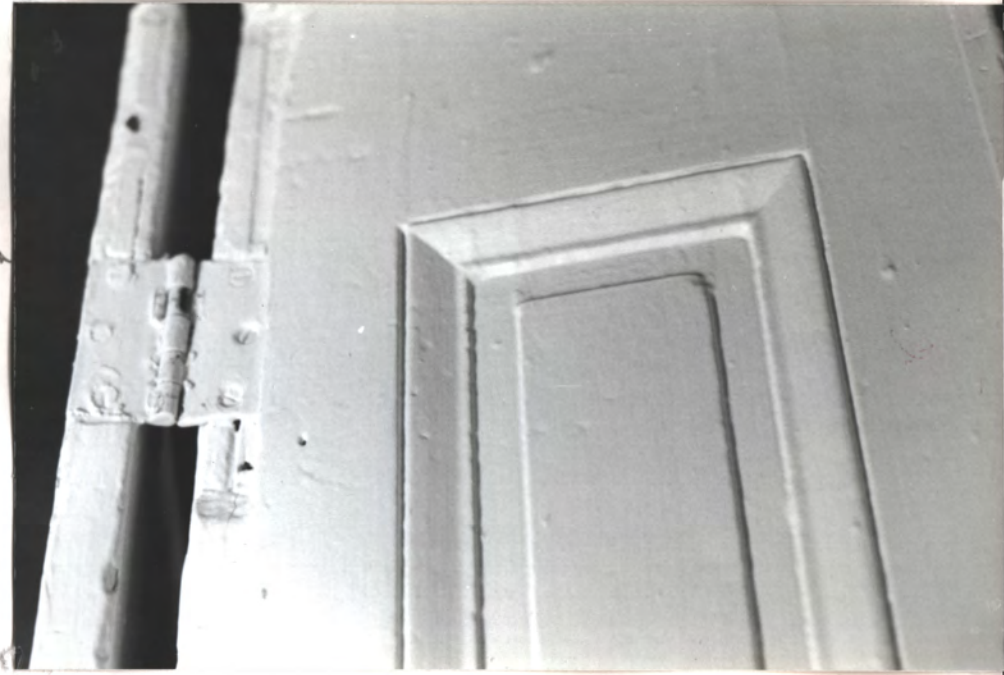
W.

419  
25  
141

c. 1980 pediment. Rest = Fed.



Fed.  
Cast  
Iron  
1-pc.  
mfg



note mortise for lost Fed. rimlock }



Carl T. Jones,  
Col., US Army  
WW2

PS Aug. 93  
during rehab.  
Mantel was  
black originally.  
There were  
chair-rail  
strips of windows  
sills, plates  
removed

N Fed. closet Fed. Mantel  
Fed. door to hall



Mod. crown mold  
c. 1940 closet (2 doors)

Fl. 2 N.E. Fed.  
B.R.  
(Master B.R.)



N. Wall

Fed. Drs.

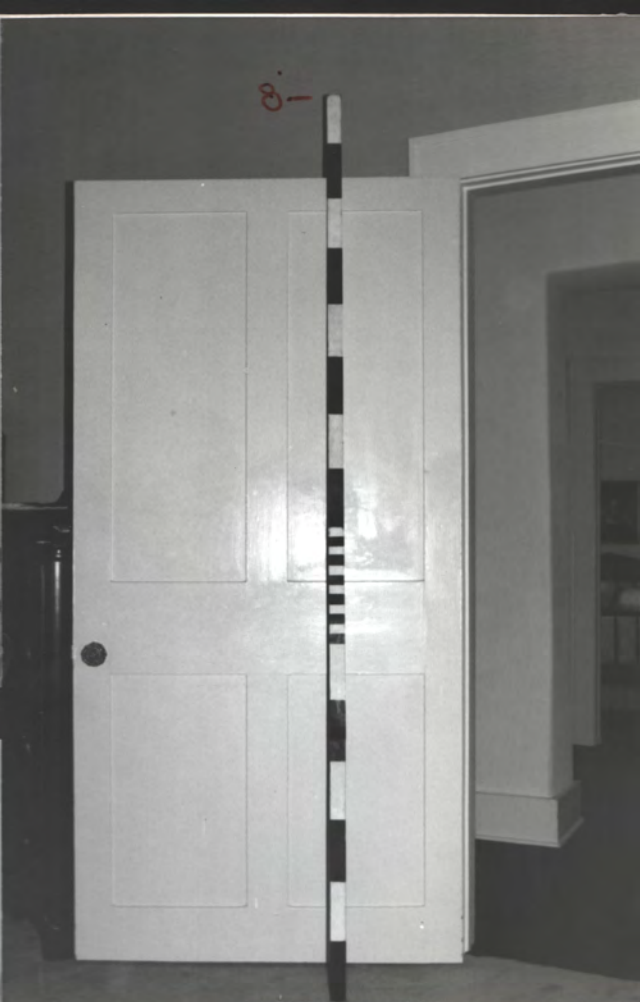


8'

N

S. Wall

N



8'

Fed. low to h/m

N



8'

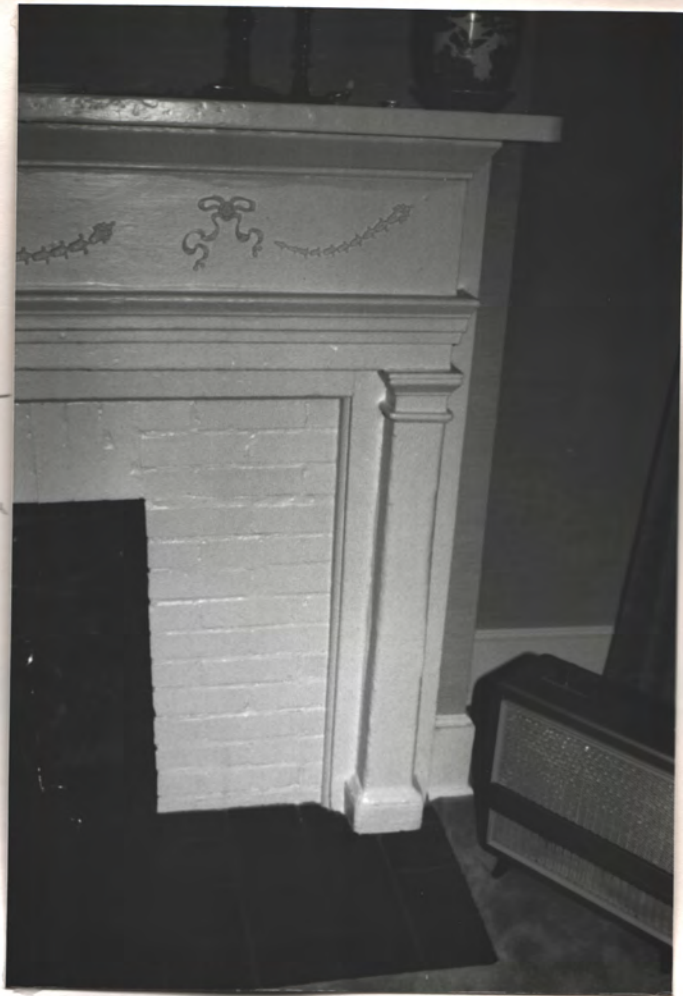
Fh2 N.E. Fed. B.R.

N

27 of 41



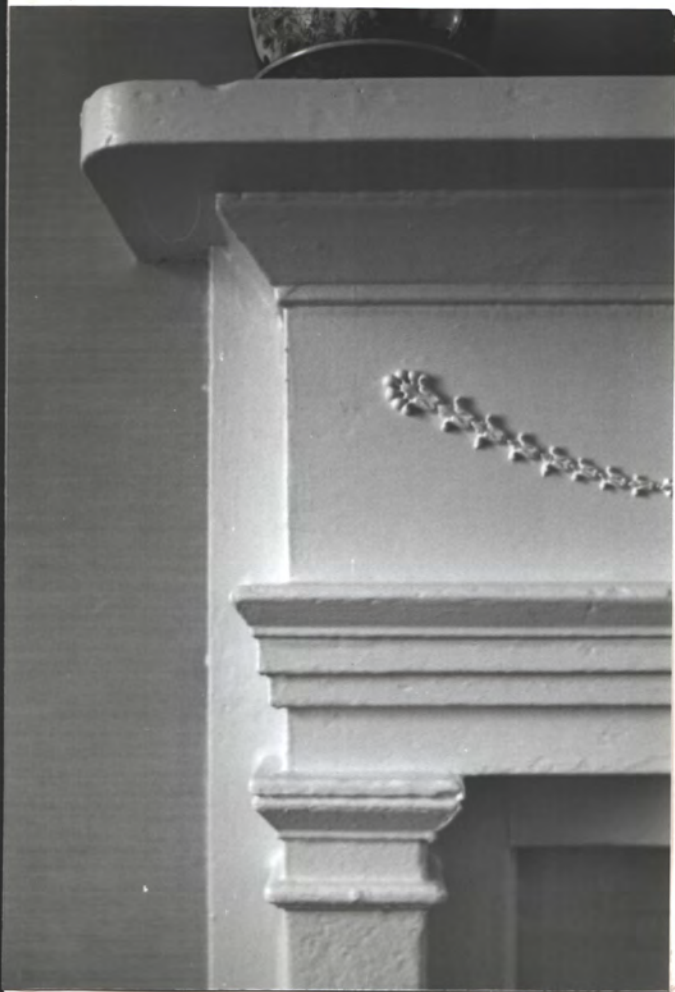
N  
→  
firebox  
= c. 1940  
(would have  
had plaster  
surround)



N  
→

Fed. Mantel at fl. 2 W. E. B. O. (surrounds = c. 1960)

(was  
dark)

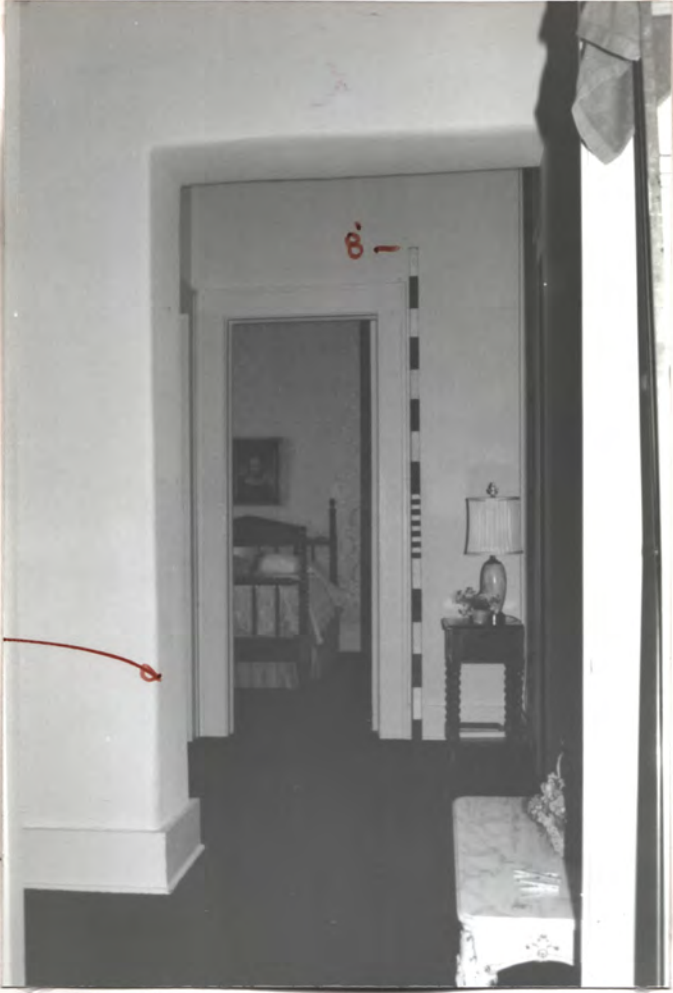


N  
→  
tile  
heights  
= c. 1940





Red door was originally here.



Looking from Fl. 2 H.E. B.R., west into park hall



Fl. 2 S. Cent. B.R.



7



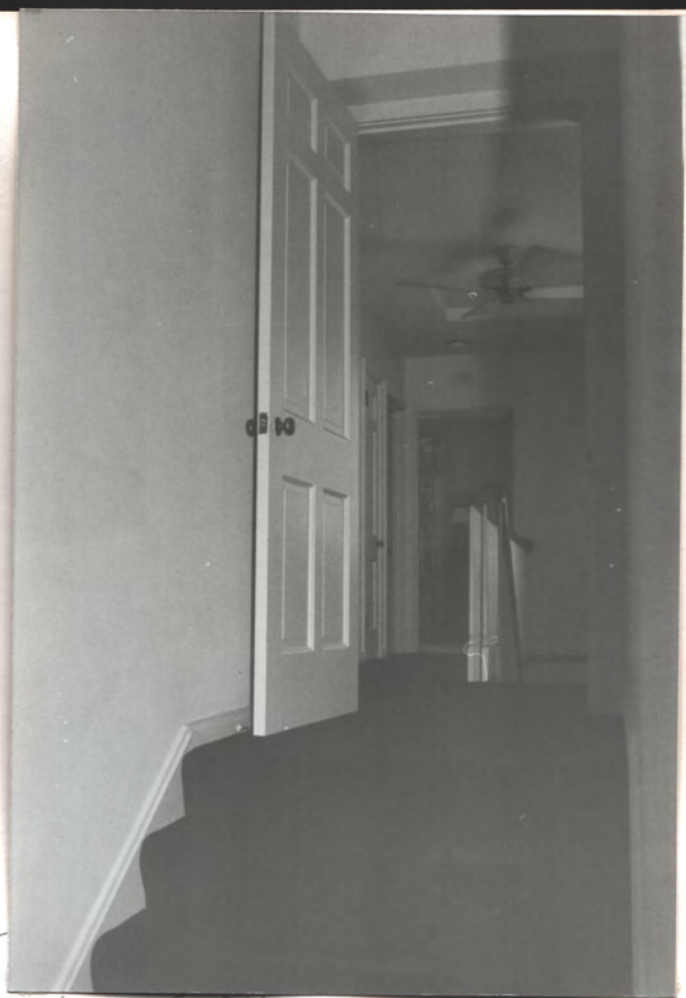
24

29 2/41



Looking East into Fl. 2 Fed. N.E. B.R.

N



Looking S. into c.1950 wing hall

N



Fl. 2. S. Cent. bath, in Fed. hse

N



Looking N. from c.1950 hall into Fed Hse

N



c. 1950 hall  
Fl. 2

bath door



Fl. 2 c. 1950 bath

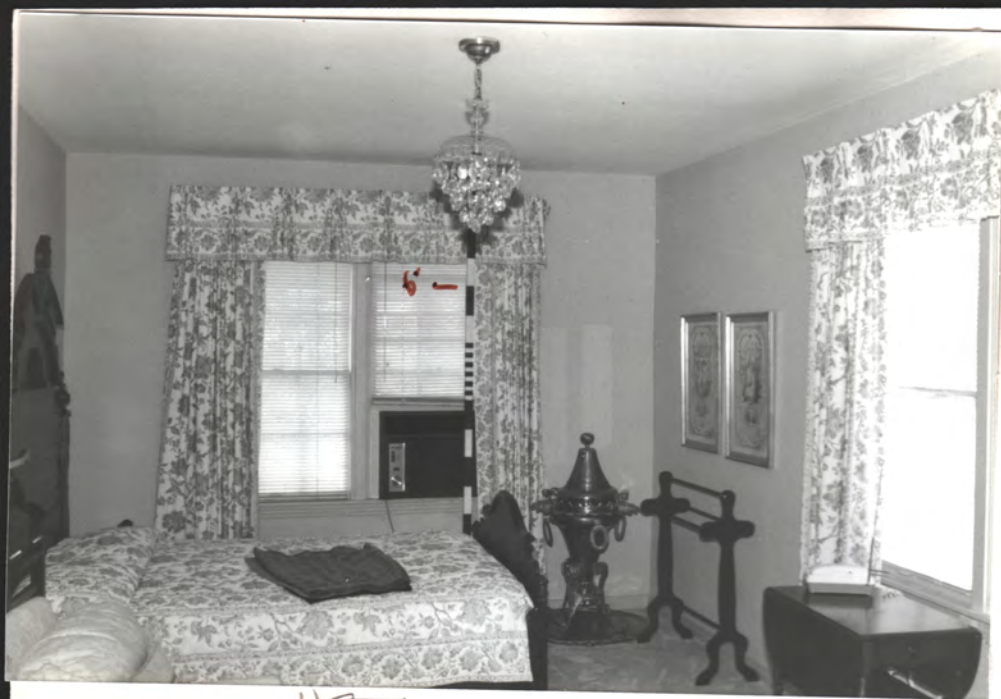
N



N

Fl. 2 S.E. Wing, cent. B.R.  
(n. of bath)

S.E. WING, c. 1950



→



→

Fl. 2 S.E. c.1950 wing  
S.B.R.

33  
148



↖



fed. mantel

→

Fb. 1 N.E. Din. Rm.



mantel

↓



→

↳ to entry hall



Fl. 1 N.E. Fed. Master (Din Rm)



S. Door  
to  
c. 1950  
wing  
from  
Din Rm



35  
15



Fed joints, not meant to be exposed



Fl. 1 West Fed Rm. (Remod. c. 1950 & later)

mod. mantle



Chall

N

Kit



Handth  
Fram.  
(Mouth  
&  
Teron  
& Peg  
) Jts)  
smud.



Note joint ax-hewn  
bottoms of some sides.  
Most sides = pit-smud

Fl 1 West Rm. Ceil (Ferd. joints, not meant to be exposed)



Note uneven pit. - Saw marks  
on joints sides





31 2/41  
z ↓  
24  
KIT,  
C. 1980  
Fl. 1,  
S. Gerb.



C. Fed. door jamb at east door



C. 1965 New entry, up to terrace ↓





CA 1965 of north porch NA



NA CA 1965 S.W. of north porch

NA  
CA 1950 S.E. wing stairs



S. RM

S. WALL

c. 1950 S.E. Wings Fl. 1



N ←

E. WALL

c. 1985 bath  
in c. 1950  
Wings Fl. 1

N  
→

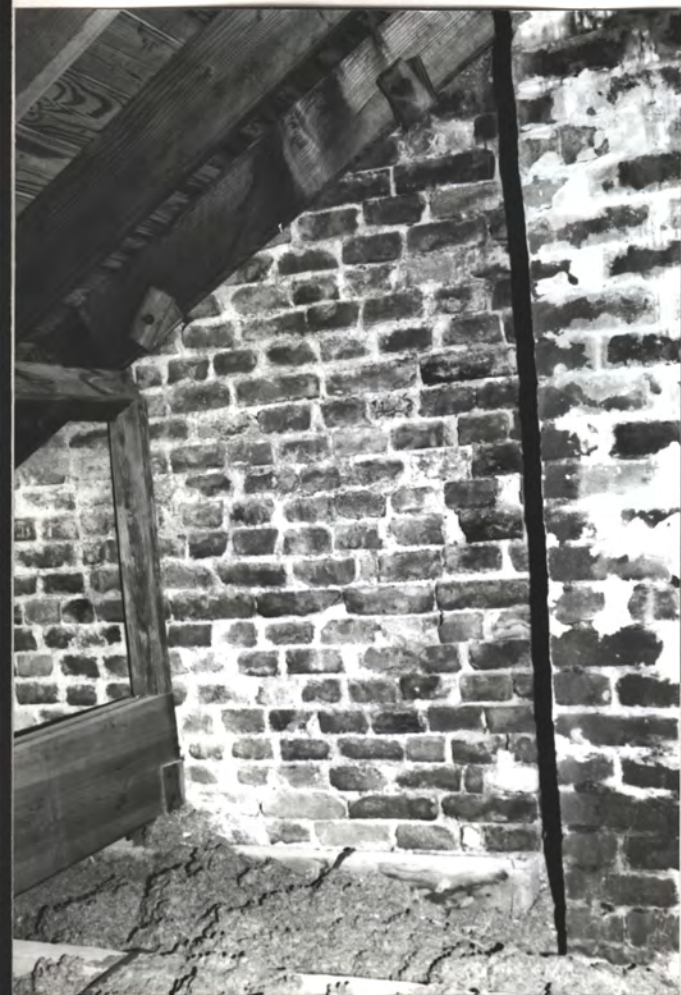
39 N41





verify → N

Attic - all rafters modern  
(joists = fed.)



← verify



→ N  
Verify

Mod. rafters  
↓  
& decking  
& braces.  
Fed. joists



→ N

→ N mod. inwd  
Fed. joists  
(hewn + pit saws)  
Note hand split Fed.  
wood lath



ceiling lath

1962



Fed Period Drake - Garth-Jones Res (John & Carolyn Jones Blue, owners)  
5003 Garth Rd., Huntsville Al. photos April 1995 Harvie Jones FAIA



N ←

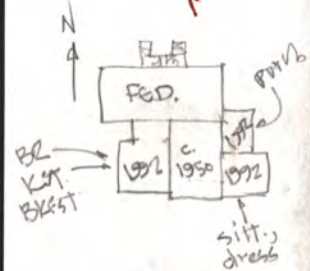
1994 S.W. ADAMS  
1111-1111 W. Mrs. 4666

N

N



AFTER  
1992 work



10-1994 S.W. ADAMS

AFTER  
1992  
ADAMS  
1994 photo



FL. 2  
N. E.  
B. R.

N

W



1994  
East  
Address  
(wind +  
purch)  
James & Hervis  
Dr. M.  
H Jones



FL 1  
NEW  
KIT.  
IN  
ADD.



left door  
to new  
screened porch

&  
rt. door to  
new master  
dress. & bath

242

N