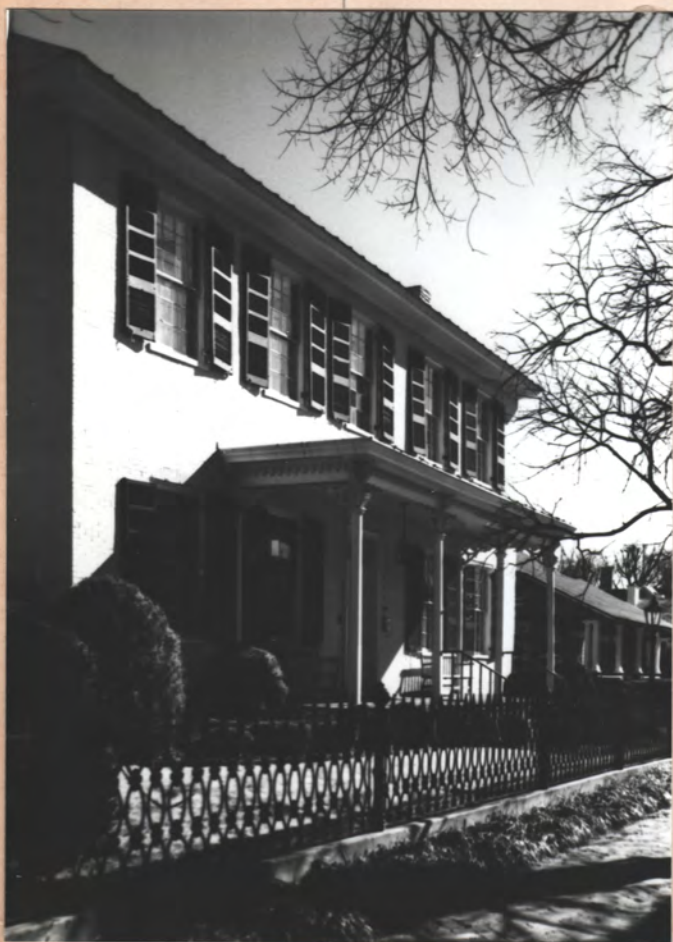




1995 photo HJ

photos c. 1990





JUL • 70 •

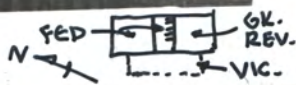
ERSKINE HENDRICK

527 FRANKLIN
 ORIG. - CA. 1818 PURCH. - LATE 18907

JUL • 70 •



CA. 1818 ERSKINE



GR. REV.

JUL • 70

7



1

02 • 100

8



JUL • 70

78



1

EAVES EXTENDED LATER →
 ERSKINE HENDRICK
 527 FRANKLIN - 1818
 SMOKELESS ↓ ONE STORY
 SERVANTS (2 STOREY) ↓

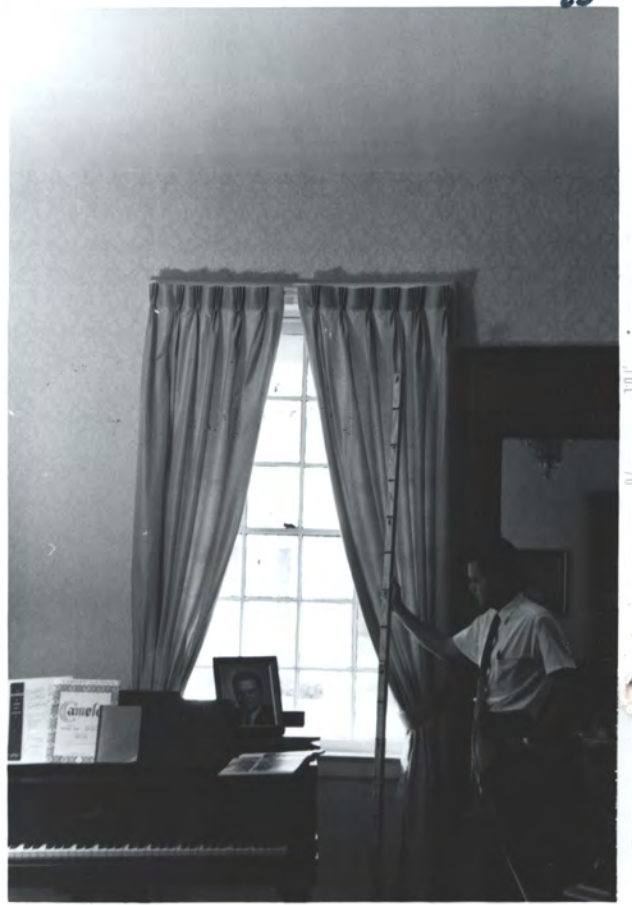
29

JUL • 70

67



1



02 • 100



6)



3



Erskine - Hendricks
1818
Franklin St.



26

188



187



153



ERSKINE HSE CA 1818

2 STY. = SERVANTS

1 STY. = SMOKEHOUSE

NOTE TYPICAL FED. CORNICE
AT 2 STY ROOF,
HORIZ. BD. IS GONE

JUL
•
70

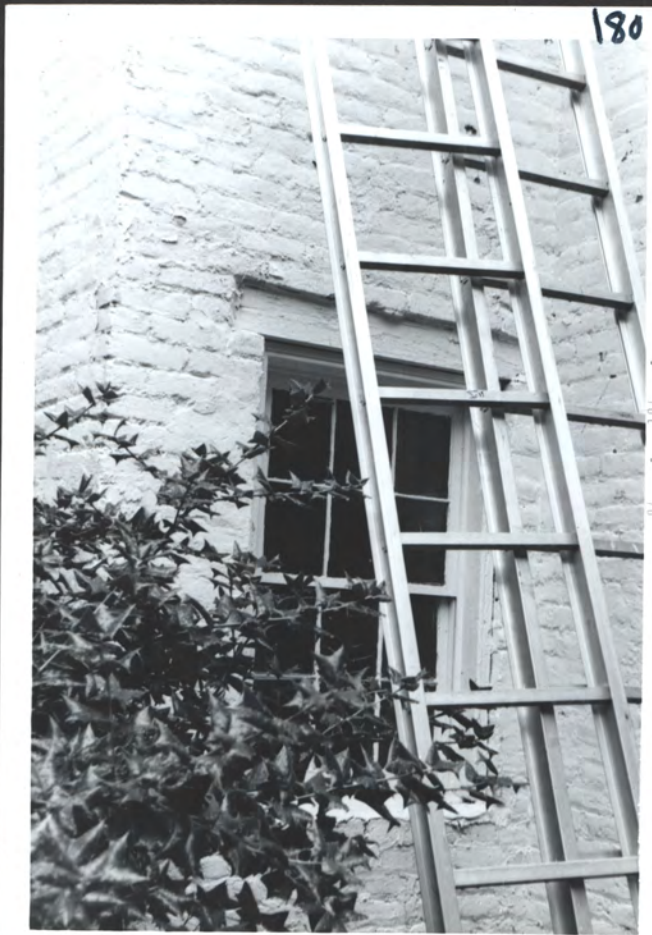




ERSKINE HENDRICKS
SERVANTS
527 FRANKLIN



2ND FL (SERVANTS)
BEADED BASE, WINDOW SILL
(STORED SCREENS = MODERN)



1970

180

186

1970

1970

181

193



189



190



ERSKINE HENDRICK
SMOKEHOUSE
527 FRANKLIN

191



192



1970



ERSKINE HENDRICK
527 FRANKLIN ST
SERVANTS (2 STORY)
1970 photos 123

129



SAME

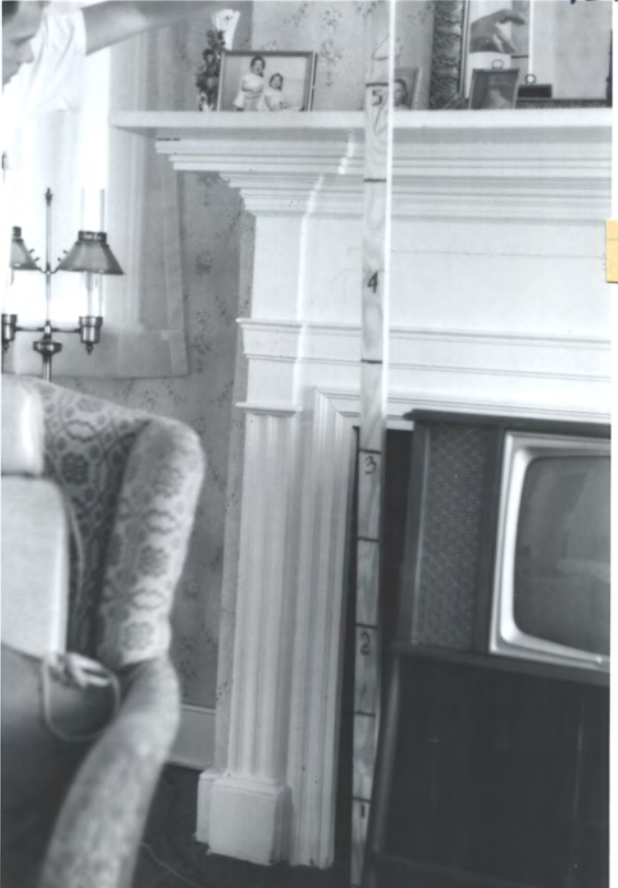


ERSKINE-HENDRICKS CA. 1818
2ND FL. & 1ST FL. NORTH

131



123



SAME

122





N. ←

1



N. ←

2

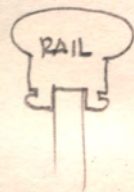
MAIN FL. LANDING

This stair is carefully reproduced at the Bonshun Bldg. in Constitution Hall Park in 1981, including "poor details"



N. ←

3



N →

4

MAIN FL. NEWEL



N →

5

MID-LANDING
→



N →

CLOS. DOOR
→

6



mould end is square-cut
(not mitered or returned)

→

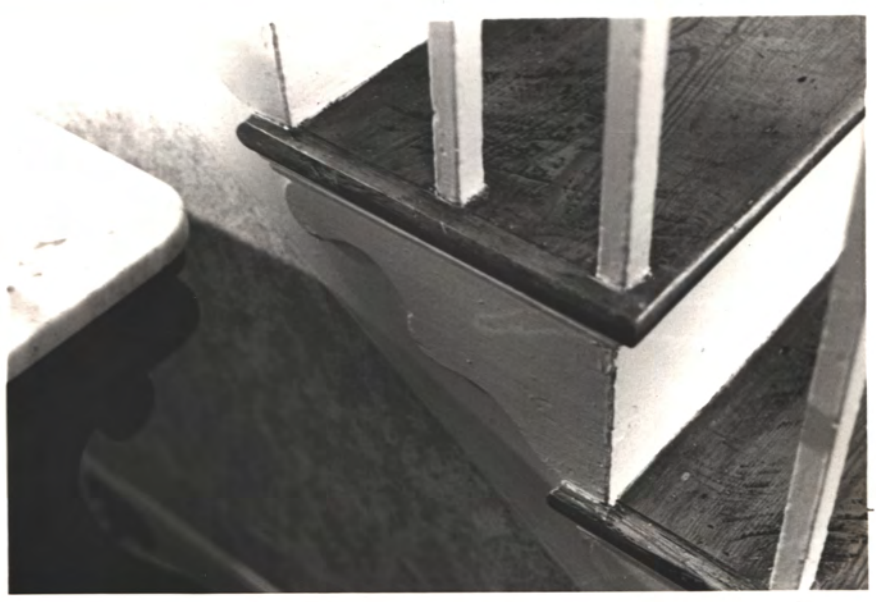
N →

7



N →

8





MID-LANDING

9

10



2ND FL. ABOVE MID-LANDING

Not

to
Z.



2ND FL. ABOVE MID-LANDING

to N.

to N

11

12

④



2ND FL. LANDING



MID-LANDING NEWEL CAP

N
N

13



2ND FL. NEWEL CAP → N

14

NOTE THAT RAIL BOTTOM HANGS BELOW CAP & DOES NOT FIT TIGHT TO CAP

CA. 1818 ERSKINE HSE. - FRANKLIN ST.
PHOTOS JUNE 1981 H. JONES



MID-LANDING NEWEL PLINTH

N
N

15



MID-LANDING NEWEL CAP

16

(5)



17

AT BOARDMAN BLDG., OMIT FL. "NOTCH".
RISER EXTENDS ACROSS TO FL. EDGE

2ND FL. LANDING

← N



18

MID-LANDING

← N



ERSKINE HENDRICK
521 FRANKLIN
CA 1818



