



West front

Porch remnants
look mid-20th. c.
makeshift. No
evidence seen that
there originally
was a porch.

West
front +
S. side

gabled part is vic. addn.
Shed = 20th. c.



West front + S. side

c. 1870's (?) Hse on
104 Steele St.

photos 8 Feb 1991 H. Jones, FAIA
To be renov. by Chandler, Contr.
(no arch)

Demolished
needlessly in 1991
(Contr. not capable
or desirous of
restoration)
(Huber, Sum)

early
* addn

STEELE ST.
C. 1870'S



EAST REAR (2 crude addns)

STEEL ST.
C1870'S



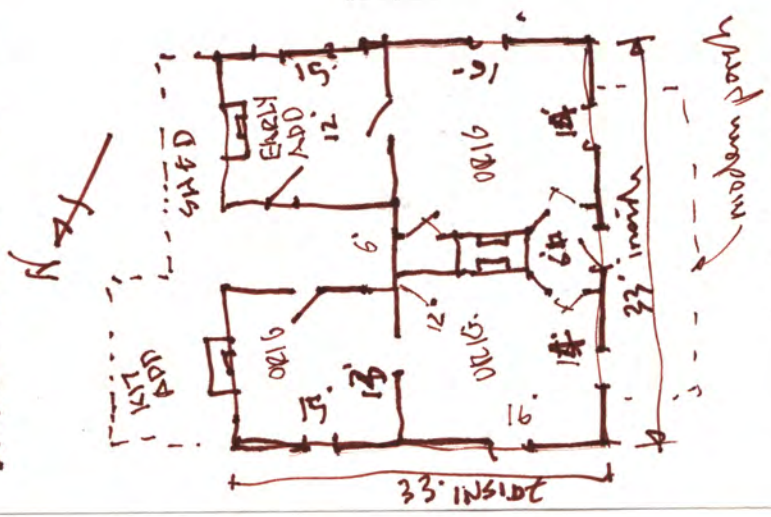
front S.W. corner.
Typical Vic. roof
detail (note pattern
of soffit boards)

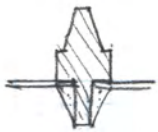
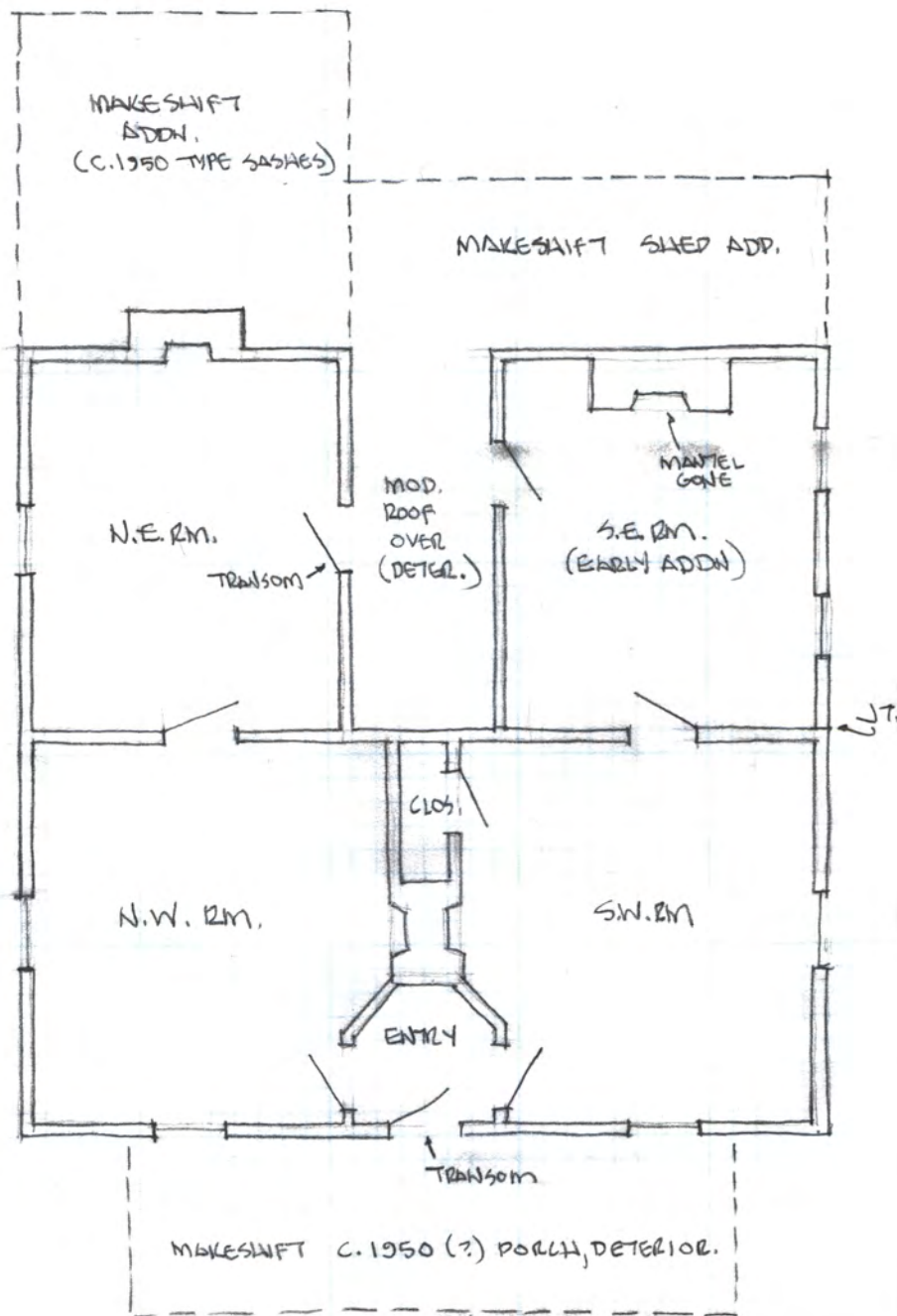


front (west) entry.
No apparent evidence that
there ever was an
original front porch

← 104 Steel St

Steel St 1451
8 Feb '91 AD
DIMS. = "STEPPED OFF" = ±





SASH MOUNTING
= LATE COL. REV./VIC. TYPE

SIDEWALK - STEELE ST.



C. 1870's (?) HSE, 104 STEELE ST., TO BE RENOVATED IN 1991 BY CHANDLER, CONTR. (NO ARCH.)
H.J. OFFERED 20 MIN. OF ADVICE. ON 8 FEB. $V_B'' = 1' \pm$ (STEPPED-OFF DIMENSIONS)

This Rm has gypsum blk. added on top of the original plaster walls



→ N

↑ entry (mod. door)



← later stove thimble

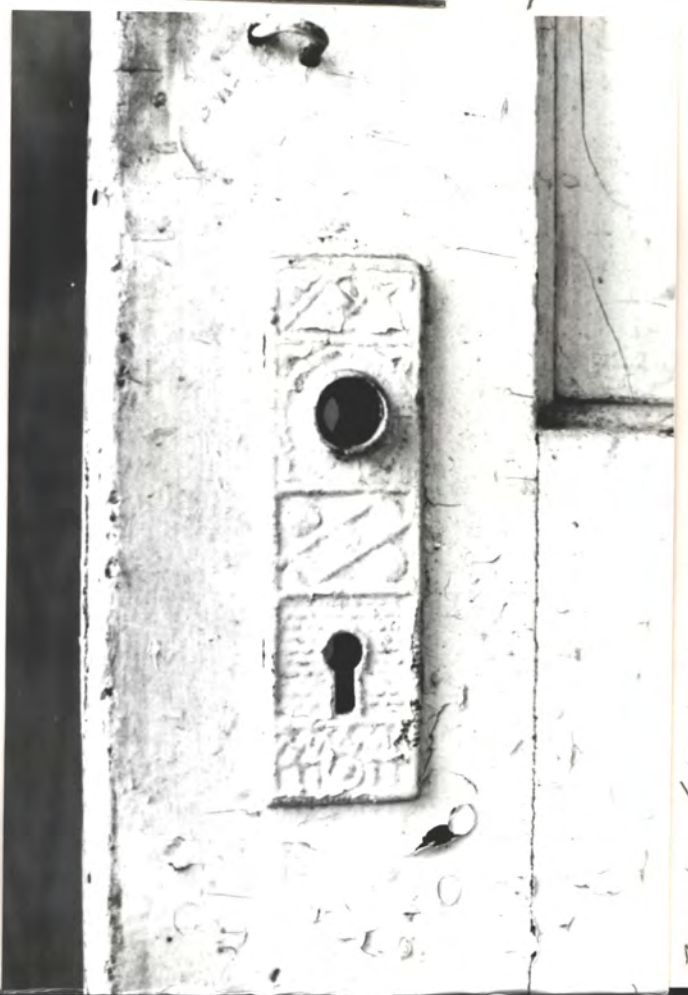
orig mantel (for coal fires - small, shallow f.p.)

look at S.E. address rm. (late Vic.)

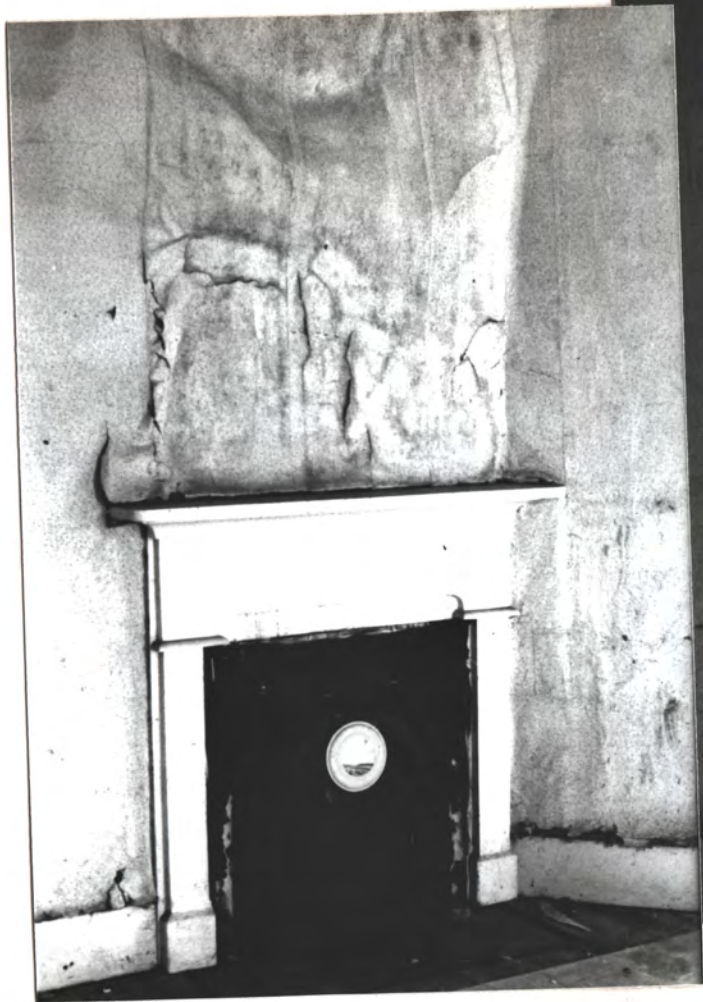


lock 2 trace

orig. lock trace



3 of 6 Steele St. '91



orig. mantel (small f.p.
to burn coal)



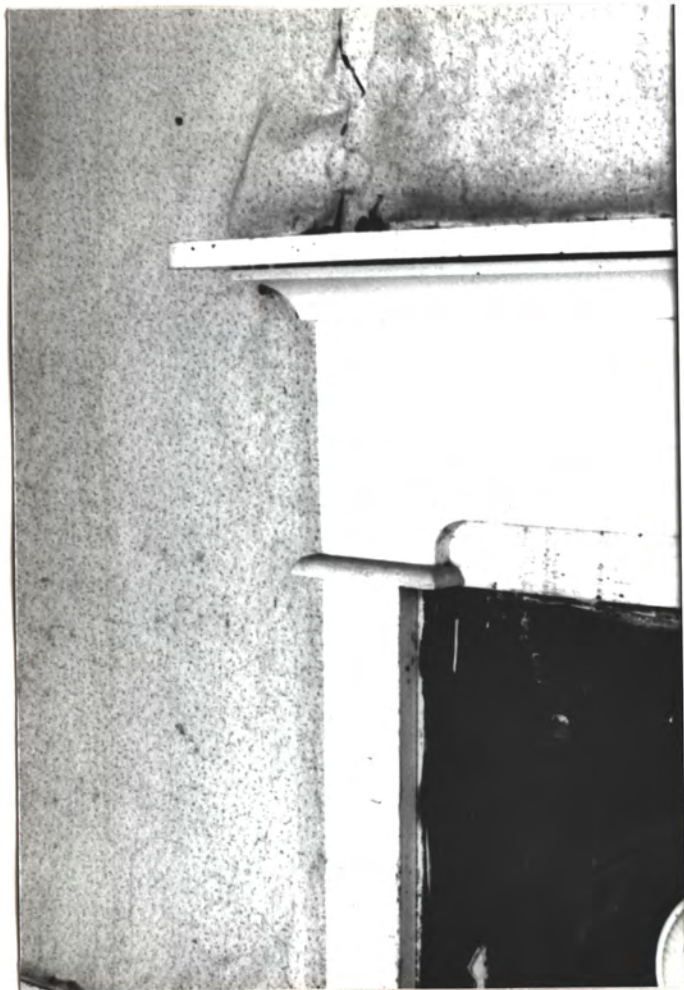
to entry

orig. door

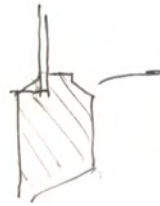
orig. sash.



N.W. Rm
HAN



N.W. Pm. orig. mantel



N.W. Pm - orig. sash & frame

546



N ←

N ←

Mantel at N.E. Rm. = orig.

Walls = plaster on
 some wood lath
 Ceils = boards (all rms)



South door to "courtyard"
 at N.E. Rm

← Door from S.E. Rm
 to S.W. Rm. beyond



→ N

c. 1870's (?) Steel St.