

limestone
Greek Revival
tomb by
George Steele,
Arch. in
Maple Hill Cem.
Huntsville, AL.
±300' from N.W.
corner of cem.
(Wells Ave. & ? St.)
photos Sept. 1988
Harvie P. Jones,
FAIA



N →



George
Steele,
Arch.
cut in
stone

N →



TOMB BY
GEO. STEELE



tomb by Gen. Steed, Auch
(signed at
W. side, S. end, low)



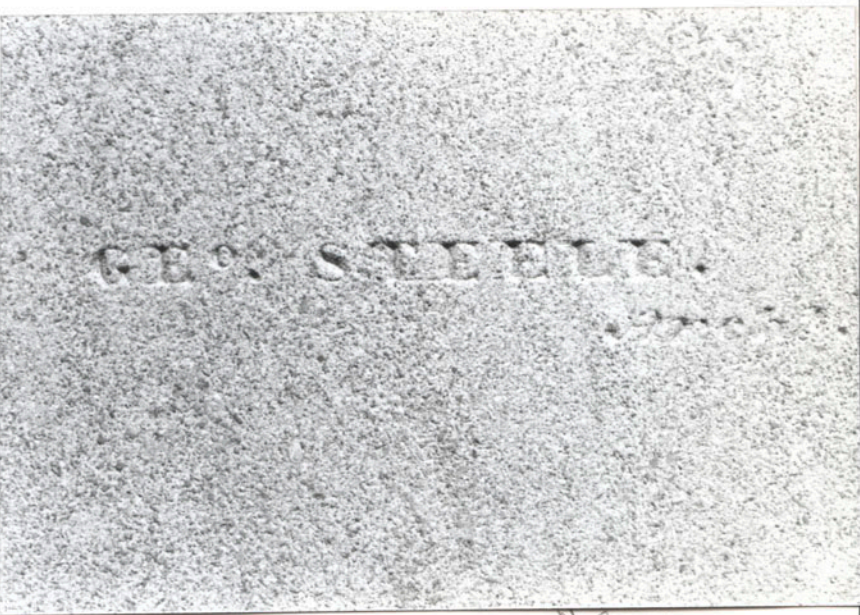
Greek Revival Tomb
 designed by Garry Steele, Architect
 Maple Hill Cem., Hills, A.
 photos May 1942 HJ Jones, prior to restor-
 (church services)

MARY S. BIBB
wife of
 WILLIAM D. BIBB.
 Daughter of
Doc. Henry Chambers.
 Born October 1816.
 married February 21st
 1855.
 Died May 26th 1855.



NS

NS



NS

N
A

George Steele
 Archt.
 (Architect)

N. Side head
 N.G. Green

1 of 4

1850's Mary B.W. Jones
by George Stead, Architect
Nagle Hill Cem.
Lawrence, AL.
Placed April 19th, Annie P. Jones, F.A.A.



↑ N



↑ N



↑ N

Freeze-spalling





K ←



← N



H.W.M

← N

304



HP



R

North Wall - heavy freeze-spalling due to Jts. in roof-slabs (stone)



W



East
West



454



S. & W. walls

N ←

1997
zinc
roof

N ← N. & W. walls

F

Mary Birt Mansberger (1840's)
by George Steele, Arch.

(his name is in lower rt. (S.W.) corner
of west wall)

Magle Hill Cem., Huntsville, AL

AFTER RESTOR. photos, Sept. 1997 HJ

All services donated by H. Jones, JH
Arch.

① Installed inconspicuous solid - zinc
flat seam roof to stop water penetration
& freeze → spalling

② Rescripted spalled stone w/ a
non-plastic restor. mortar by
"JAH" of Holland, made for
restor. studs.



1/23



↓
new
solid
zinc
roof edge

S. W. M.





N
→

N. Wall



N
→

MARY
WILLIAM T
Baptist
The
Died
Buried
1822
1800



Before (freeze-spalls)

- new zinc roof (orig. was only
stone slabs w/ open jts)



AFTER - resurfaced with "Jahn" restoration mortar
by "WESCO" of Nashville.
All arch. work donated by H. Jones

Huntsville Times - Nov 17 - 1996

*Tomb designed by Garry Steele, Arch.
1850's*



Glenn Baeske/Huntsville Times

'Mary of Maple Hill

Getting into the proper spirit for the upcoming production of the play "Mary of Maple Hill" are three of the cast members, who are in front of the Bibb's mausoleum, burial place of the play's tragic heroine. They are, from left, Jakobbie Smith as Jacob the broom dancer, Tiffany Smith as Mary Parrot Betts and Gina Groome as young Mary Chambers. The original play, written by Pat Bivens and directed by Ron Harris and Connie Voight, will be presented for the public Friday and Saturday at 7:30 p.m. in the Lee High Lyric Theater, 606 Forrest Circle NE. Tickets, which are \$5, are available by calling 851-4100 or 532-4830. The play is a co-production of the Academy for Science and Foreign Languages and the Lee High Performing Arts Magnet Program.

JONES & HERRIN

Architecture/Interior Design

July 1, 1997

Mrs. Perky Taylor
2209 Georgian Drive
Huntsville, Alabama 35801

Re: Bibb Mausoleum

Dear Perky:

"Copperworks" Company has completed the mausoleum solid-zinc roof installation. It is already inconspicuous and will dull-down more in a few weeks. It looks like a good job. I'll send you their invoice when I receive it from Brenda Webb.

I today called "Wasco" in Nashville for them to schedule the stone repair with the "Jahn" restoration mortar. Mr. Dallas Upchurch reports they have done similar work on the Tennessee State Capitol and two or three other buildings in Nashville if you would like to see their work. If so, call him at (615) 244-9090 for the specific locations of the repairs.

Mr. Upchurch is to send his Certificate of Insurance and let us know of his schedule. I reiterated our concern for a good color match between the stone and the repair-mortar.

After ⁹eight years of effort it is good to see this progress in the preservation and restoration of this little gem of architecture by George Steele, our finest early nineteenth century architect.

Respectfully,



Harvie P. Jones, FAIA
HPJ/tm

copy: Ms. Brenda Webb, Maple Hill Cemetery Manager
Mr. Guenther Huber-Delle, Copperworks
Mr. Dallas Upchurch, Wasco
HJ

JONES & HERRIN

Architecture/Interior Design

1-615-244-9090

August 27, 1997

Wasco, Inc.
1138 Second Avenue North
Nashville, Tennessee 37208

Attn: Mr. Dallas Upchurch

Re: 1855 Bibb Mausoleum, Huntsville, Alabama

Dear Mr. Upchurch:

Everyone is very pleased with Wasco's stone repair work using "Jahn" Restoration Mortar at the 1855 Bibb Mausoleum here at Maple Hill Cemetery. I first began efforts to have this work done in September, 1988, nine years ago. Thanks to the fund-raising efforts of the Huntsville Pilgrimage Association and their perseverance over a number of years the job has been accomplished, and done in an excellent manner by "Wasco".

We appreciate your good work in preserving and restoring this small jewel of Greek Revival architecture.

Respectfully,



Harvie P. Jones, FAIA
HPJ/tm

copy: Mrs. Perky Taylor
Ms. Brenda Webb
HJ

Cemetery Department
Brenda Webb
Manager

City of Huntsville
P. O. Box 308
Huntsville, Alabama 35804-0308
(205) 535-6485

September 8, 1997

Mr. Harvie P. Jones
Jones and Herrin Architects
104 Jefferson St.
Huntsville, AL 35801

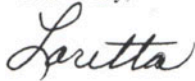
Dear Harvie:

I recently learned that the Bibb Mausoleum at Maple Hill has been beautifully repaired and preserved. Brenda Webb tells me that you worked very diligently to determine what needed to be done and found the right contractors to do the job. Thanks to your persistence and the funding from many citizens and family members, a valuable part of our history has been preserved for future generations.

I want to also take this opportunity to thank you for all your efforts that benefit our community. You have made a real difference in the quality of life we all enjoy.

Thanks again.

Yours truly,



Loretta Spencer, Mayor

LPS/bd

A Future on the Horizon
Huntsville

Loretta Spencer, Mayor

Cemetery Department
Brenda Webb
Manager

City of Huntsville
P. O. Box 308
Huntsville, Alabama 35804-0308
(205) 535-6485

September 8, 1997

Mr. Harvie P. Jones
Jones and Herrin Architects
104 Jefferson St.
Huntsville, AL 35801


Dear Harvie:

Thank you so much for hanging in there to find our solutions to saving the Bibb Mausoleum. We could have never completed the process without your leadership. You have always been there when we need you. I want you to know how much I appreciate your advice and friendship.

I asked the repairman from Wasco to give me an estimate to clean and repair the Erskine Mausoleum. If the estimate is reasonable I may be able to complete the work this next budget year.

Thanks again for all your help. Come see us soon.

Yours truly,


Brenda G. Webb, Manager

BGW/bd

A Future on the Horizon
Huntsville

Loretta Spencer, Mayor

October 2, 1997

Mrs. Felicite B. Latane
212 Vance Street
Chapel Hill, NC 27516

Dear Mrs. Latane:

The Huntsville Pilgrimage Association is pleased to announce the completion of the restoration and repair of the Blbb Mausoleum. Due to your contribution and support of this project, this historical landmark designed by George Steele has been preserved.

Enclosed are photographs of the project and a copy of the letter we received from Harvie Jones who was instrumental in procuring the expert craftsmen. After eight years of effort the once dangerous and unsightly historical site has been beautifully restored.

On behalf off the Huntsville Pilgrimage Association, we appreciate your continued interest in the restoration work at Maple Hill Cemetery.

Cordially,

Perky Taylor
Huntsville Pilgrimage Association Board Member
Cemetery Committee Chairman



: Harvie Jones, Jones & Herrin ✓
Brenda Webb, Maple Hill Cemetery

**HUNTSVILLE
PILGRIMAGE
ASSOCIATION**

Post Office Box 2992
Huntsville, Alabama 35804
(205) 533-5723
1-800-843-0468

Harvie -
Wanted you to
have a copy of
the letters we
sent to the
Bobb descendants!
Thanks for all
your help -
Margaret Beebe -

for Historic Huntsville Quarterly - '98
by Harvie P. Jones, F.A.I.A.
6 Feb. 1998

THE 1835 MARY BIBB MAUSOLEUM

In Huntsville's historic Maple Hill Cemetery sits a small jewel of 1835 Greek Revival architecture. It was designed by, and signed by, Huntsville's first and still finest architect, George Gilliam Steele. It is a diminutive Greek-temple-form structure of only 5 feet x 9 feet 6 inches in plan, built of carved limestone, with a gently sloped pedimental stone slab roof, corner pilasters with delicate "egg-and dart" carved capitals and molded bases; all ~~as~~ on a stone stylobate. The delicate molds are counterpointed by the expanses of smooth stone-slab walls. That Steele's name is engraved in tiny Roman letters, "Geo. Steele, Arch't," in the lower corner of the west wall, indicates his satisfaction with his classical design.

This handsome structure demonstrates that large size or great elaboration has nothing to do with the quality of a work of architecture. The Bibb mausoleum is small, simple, and beautiful. Its proportions are approximately those of a "quadruple cube," 5 feet x 9 feet 6 inches in plan, and 9 feet 6 inches high to the roof ridge. This type of geometric proportioning has been the primary basis of setting architectural proportions since ancient Greece. In the middle ages, architects were called "geometricians." Geometry was used to set the design of buildings and their components, and "measurements" came only as a result of the initial ^{geometry} and subsequent artistic refinement. ~~geometry~~ This secret has been lost in the 20th century. Now buildings are typically set by measurements, with geometric proportioning as an afterthought, if considered at all. The proliferation of awkwardly-proportioned modern buildings is the painful-to-the-eyes result of this backwards-approach to proportioning.

By 1988, the Bibb mausoleum, then 153 years old, was in serious condition. Prolonged water-penetration through the ^{joints} joints in the limestone roof slabs had caused freeze-spalling of the entablature stone. Considerable chunks of the architraves, taenia molds, frieze and cornice were fallen, and many freeze-cracks were present in the stonework. It was apparent that a two-step approach was needed to (1) restore the building and (2) prevent the recurrence of the water penetration through the roof-slab joints that had caused the problem. Since there is no type of caulking that will permanently seal joints in stone roof-slabs, it was decided to cover the roof with an inconspicuous but highly durable material that needs no maintenance. The material used was flat, solid zinc sheet, which weathers to a soft gray that is compatible with the warm gray limestone. The metal seams are flattened to further diminish its visual presence.

For the repair of the ^{spalled} spotted and fractured carved limestone details, a material developed in Holland specifically for stone restoration was employed--"John Stone-Restoration Mortar." This material contains no plastics, a very important characteristic and not the case with other such products. Its physical properties match that of the limestone and ^{it} can be modeled to recreate moldings of spotted areas. The finished results are excellent.

Nine years of planning, fund-raising, and restoration were required in the restoration of this beautiful structure, and it was worth every minute of it. Most funding and much effort was supplied by the Huntsville Pilgrimage Association. The zinc roof was installed by Guenther Huber-Delle, a highly-skilled metalsmith, trained in Germany, who owns Copperworks Co. in Decatur. The stone restoration was executed by Wasco of

Nashville, who have personnel trained by "Jahn".

Architectural work was donated over

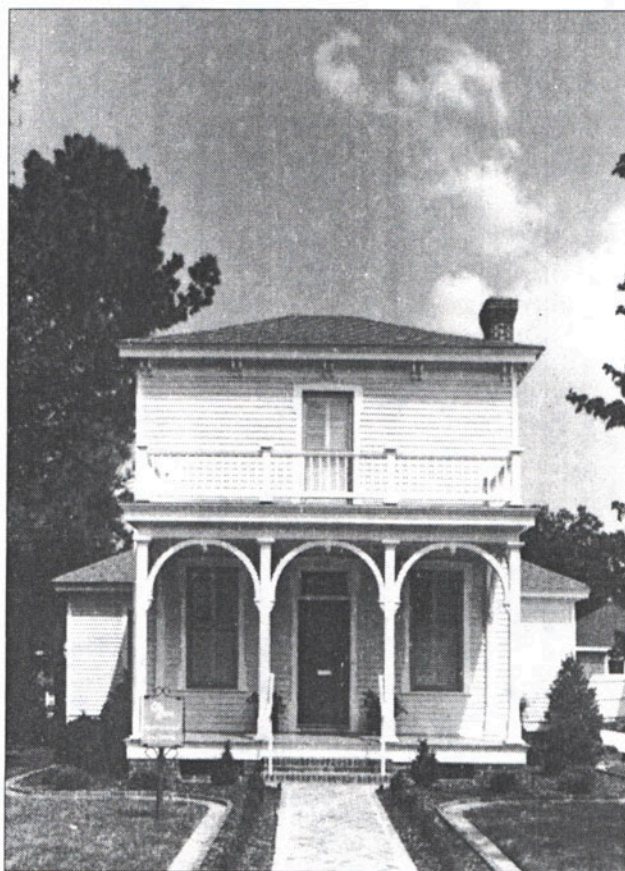
the nine year period by Jones & Herrin, Architects, of Huntsville, on behalf of the Historic Huntsville Foundation.

It would have been easy to let this diminutive work of architectural ^{beauty}~~beautify~~ continue to crumble into ruin. That it was restored and preserved is a credit to the conscientiousness of Huntsvillians, not only in conserving a memorial and burial site, but in saving a fine work of architecture that serves to remind us that restraint and beauty of proportion, not grandiose size and elaboratenss, are what constitute architectural quality.

THREE DOLLARS

SPRING 1998

THE
HISTORIC HUNTSVILLE QUARTERLY
OF LOCAL ARCHITECTURE AND PRESERVATION



RESTORATION AND REMEMBRANCE:
THE HUNTSVILLE PILGRIMAGE

1681 Bernstein Hse
Steele St.
H Jones donated
arch. services in
order to save
the neglected hse
in 1993-6



Mary Chambers Bibb, wife of William Bibb, portrayed by Marianne Anderson. Courtesy Cynthia Massey Parsons.

The 1835 Mary Bibb Mausoleum

by Harvie P. Jones, F.A.I.A.

In Huntsville's historic Maple Hill Cemetery sits a small jewel of 1835 Greek Revival architecture. It was designed by, and signed by, Huntsville's first and still finest architect, George Gilliam Steele. It is a diminutive Greek-temple-form structure of only 5 feet x 9 feet 6 inches in plan, built of carved limestone, with a gently sloped pedimental stone slab roof, corner pilasters with delicate "egg-and-dart" carved capitals and molded bases; all on a stone stylobate. The delicate molds are counterpointed by the expanses of smooth stone-slab walls. That Steele's name is engraved in tiny Roman letters, "Geo. Steele, Arch't," in the lower corner of the west wall, indicates his satisfaction with his classical design.

This handsome structure demonstrates that large size or great elaboration has nothing to do with the quality of a work of architecture. The Bibb mausoleum is small, simple, and beautiful. Its proportions are approximately those of a "quadruple cube," 5 feet x 9 feet 6 inches in plan, and 9 feet 6 inches high to the roof ridge.

This type of geometric proportioning has been the primary basis of setting architectural proportions since ancient Greece. In the middle ages, architects were called "geometricians." Geometry was used to set the design of buildings and their components, and "measurements" came only as a result of the initial geometry and subsequent artistic refinement.

This secret has been lost in the 20th century. Now buildings are typically set by measurements, with geometric proportioning as an afterthought, if considered at all. The proliferation of awkwardly proportioned modern buildings is the painful-to-the-eyes result of this "backwards approach" to proportioning.

By 1988, the Bibb mausoleum, then 153 years old, was in serious condition. Prolonged water penetration through the joints in the limestone roof slabs had caused freeze-spalling of the entablature stone. Considerable chunks of the architraves, taenia molds, frieze and cornice

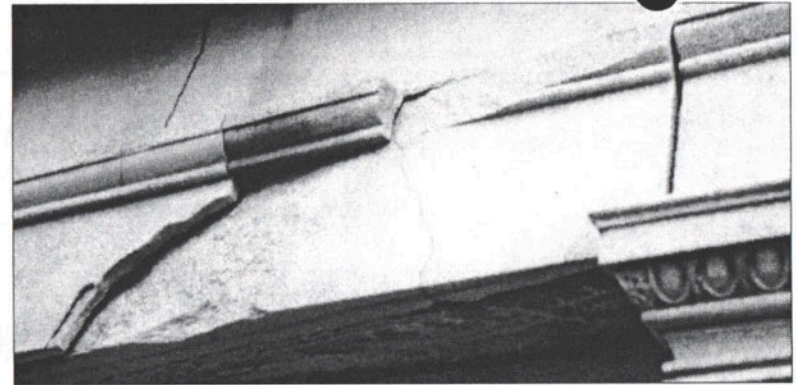
were fallen and many freeze-cracks were present in the stonework. It was apparent that a two-step approach was needed to (1) restore the building and (2) prevent the recurrence of the water penetration through the roof slab joints that had caused the problem.

Since there is no type of caulking that will permanently seal joints in stone roof slabs, it was decided to cover the roof with an inconspicuous but highly durable material that needs no maintenance. The material used was flat, solid zinc sheets, which weather to a soft gray that is compatible with the warm gray limestone. The metal seams are flattened to further diminish its visual presence.

For the repair of the spalled and fractured carved limestone details, a material developed in Holland specifically for stone restoration was employed—“Jähn Stone Restoration Mortar.” This material contains no plastics, a very important characteristic and not the case with other such products. Its physical properties match that of the limestone and it can be modeled to recreate moldings of spalled areas. The finished results are excellent.

Nine years of planning, fund-raising, and restoration were required in the restoration of this beautiful structure. It was worth every minute of it. Most funding and much effort was supplied by the Huntsville Pilgrimage Association. Monetary contributions were also made by Bibb family members and the Historic Huntsville Foundation. The zinc roof was installed by Guenther Huber-Delle, a highly-skilled metalsmith, trained in Germany, who owns CopperWorks Co. in Decatur. The stone restoration was executed by “Jähn” trained craftsmen from Wasco of Nashville. Architectural work was donated over the nine year period by Jones & Herrin, Architects, of Huntsville, on behalf of the Historic Huntsville Foundation. *HJms*

It would have been easy to let this diminutive work of architectural beauty continue to crumble into ruin. That it was restored and preserved is a credit to the conscientiousness of Huntsvillians, not only in conserving a memorial and burial site, but in saving a fine work of architecture that serves to remind us that restraint and beauty of proportion, not grandiose size and elaborateness, constitute architectural quality.



Detail of Mary Bibb Mausoleum, Maple Hill Cemetery, before restoration.
Courtesy Margaret Belle Crow.



Detail of Mary Bibb Mausoleum, Maple Hill Cemetery, after restoration. A craftsman from Wasco, Nashville, finishes the restoration of the damaged stone.
Courtesy Margaret Belle Crow.