



20TH C. PORCH
 (BIGGER THAN SHOWN
 IN 1913 SAIBORN MAP)

700 E. HOLMES AVE.
 LAWTONVILLE, AL.
 CA. 1899 (per Linda Boyer
 research)
 (is on 1913 SAIBORN MAP)
 BUNGALOW PORCH IS
 ADDED 1913 - RUBEN 1920'S
 PLANTER DEL. 1986 HOLMES



CER. ASBES. SHINGLES
 ADDED PROBABLY
 ± 1940

3/1 SASHES = BUNGALOW STYLE
 ORIGINAL PROBABLY 2/2

BOTH WERE BUILT TO SAME
 PL. PLAN, PER 1913 SAIBORN
 MAP, W/ DIFF. ELEV. DECISIONS
 (CONFLICTS 680LES)

700 E 702
 E. HOLMES AVE

E. HOLMES AVE
 CA. 1899
 103.700+702



E.
SIDE

AN



FRONT
PORCH



2

CHAPOT PROBABLY
1920'S (BUNGALOW STYLE)



PRESENT
702
E. HUNTER

REAR

AN



c.1920's porch

ADDS, probably 1920's



WHITE ST ← N →



N ↑
HOLMES ↓

387

WHITE ST ↓



CHRP 0127

N ← BACK YD.



N ←



← WHITE

BACK YD.



N44

HOLMES AVE

Porch not built per HJ plans - didn't shorten
depth per Vic. porch on Sanborn map.
Kept "bungalow" deep porch. Too bad.
Kept " " 1/1 sashes.

1986 Remod. + Addn see previous photos
+ maps etc



* → ADD. 1987

WHITE ST.

S. E. Corner of White St. & E. Holmes Ave (late Vic. - see Sanborn map 1913)
photos HJ, Spring 1988

1 of 1



NOTE: GABLES MAY HAVE "HALF-TIMBER" DECORATION.
 IF FOUND UNDER ASBESTOS SHINGLES, SUCH DECORATION
 WILL BE RETAINED



Jones & Herrin
 Architects, A.I.A.

104 Jefferson Street
 Huntsville, AL 35801

700 EAST HOLMES AVE. 1893
 CA. 1885(?)

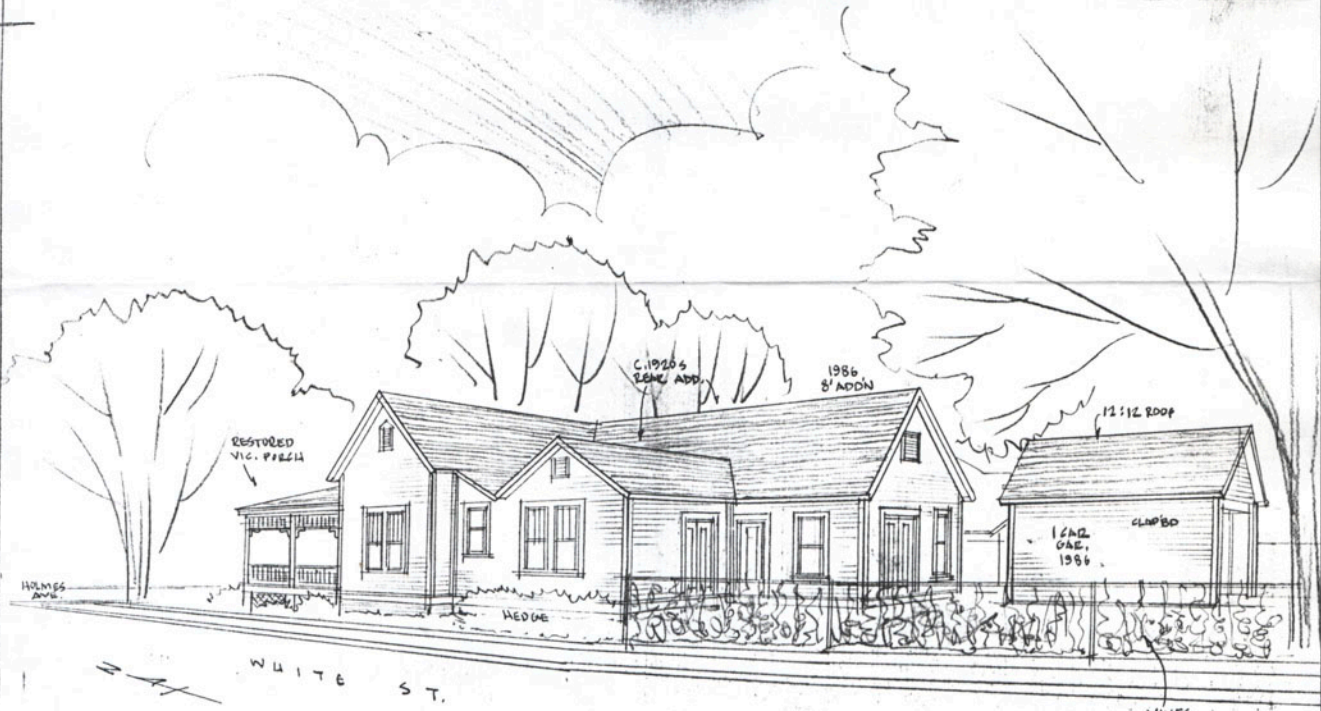
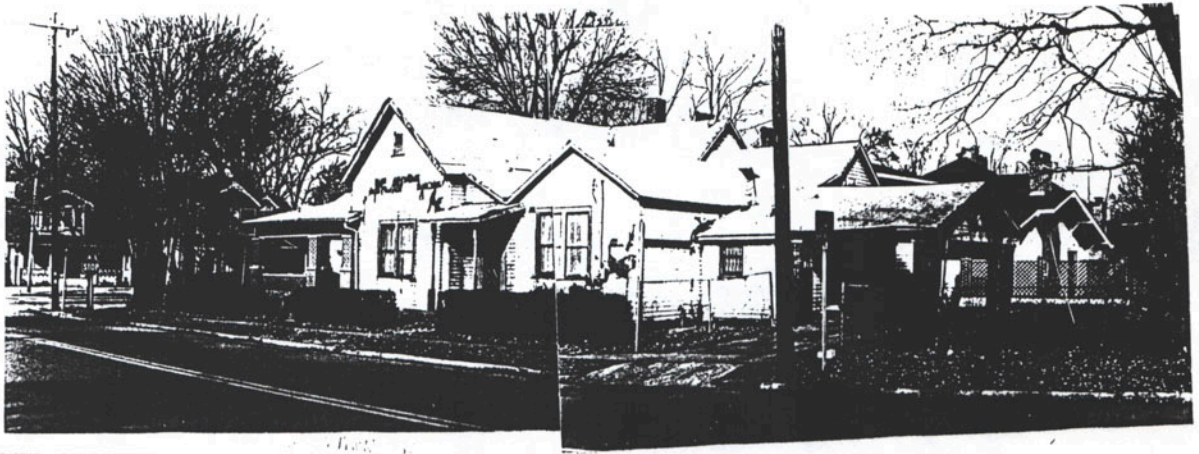
RESTORED VIEW - PORCH PLAN SIZE PER 1913 SENECA MAP

PORCH DECOR. PER C. 1900 PHOTO OF 702 HOLMES AVE. (SAME PLAN, SPEC. HSES.)

JONES & HERRIN, ARCHITECTS, A.I.A.

23 DEC. 1986

HARVEY P. JONES, F.A.I.A.



700 EAST HOLMES AVE. CD. 1895 (3) + 1986 ADDNS. C. 1920's + 1986
 JONES & HERRIN, ARCH. A.I.A. H. P. JONES, F.A.I.A. 23 DEC. '86

Jones & Herrin
 Architects, A.I.A.

104 Jefferson Street
 Huntsville, AL 35801

WP 4 9

1x8 FASCIA

3/4" TRIM

FRAMING AS REQ'D

2" VENT SLOT

WP 4 9

SALVAGED BEADED SOFAT BDS.

1 1/8" x 3/4" REDWOOD LATTICE

FIN. QUALITY CLEAR 1 1/2" x 3/2"

BRACKET

BRACKET

7/8"

1 1/2" R.

1 1/2" R.

1 1/2" R.

HOLE

2 1/2" R.

3"

4 1/2"

3"

TYPICAL SPACING

CUT BRACKETS FROM 2 LAYERS REDWD. 1x12, LAMINATE TOGETHER, SAND EDGES

RESTORED C. 1885 PORCH DETAILS
700 E. HOLMES AVE. 1 1/2" = 1"
24 DEC. 1986 H.P. JONES, F.A.I.A.

Jones & Herrin
Architects, A.I.A.

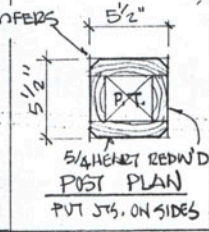
104 Jefferson Street
Huntsville, AL 35801

5 1/2" x 5 1/2"

3/4" CHAMFERS

5 1/2" N.T.S.

3/4" CHAMFERS



SPACE VERT. LATTICE STRIPS EVENLY AT POSTS AT EA. END

1 1/4" 3" 4 1/2" 3" 4 1/2" 3" REPEAT

3/4" CHAMFERS

FIN. QUAL. CLEAR REDWD 1 1/2" x 3 1/2"

1 1/8" x 3/4" REDWD LATTICE SPACED AS SHOWN

3/4" x 1/2" REGLET

OPEN SLOT

REUSED FL. (IF O.K.) T & G SLOPE 2"

REDWOOD 1x8 FASCIA

P.T. 2x8

ONLY FLASH. 4" x 1/2" LIP

10" GALV. BOLTS HOOK 2" / PIER

16" x 12" BRICK PIER

1/2" x 1/2" REDWD LATTICE 45° SPACED 1 1/2" APART (NOT "STOCK" PREPARED FLIMS) LATTICE

LATTICE PACE

16" W. BRICK PIERS CENTERED UNDER COLS.

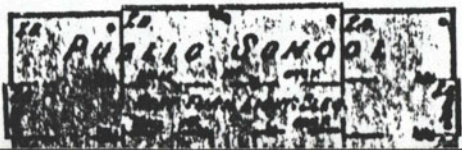
± 8' VERIFY AT SITE BY OLD TRACES UNDER PRESENT 20TH C. PORCH

E. HOLMES

328

SCHOOL

1913
Sanborn Map
H'ville



N. WHITE

700 702

OLD PHOTO
RND.

13

35

SCHOOL

