

NOT ON
1871 VIEW
OF HSV.

PORCH PROBABLY EARLY 20TH. CENT.

VICTORIAN ADD.

ORIG. HSE C. 1824

+ GR. REV. C. 1840-50 GABLE ENDS
& SOME INT. TRIM

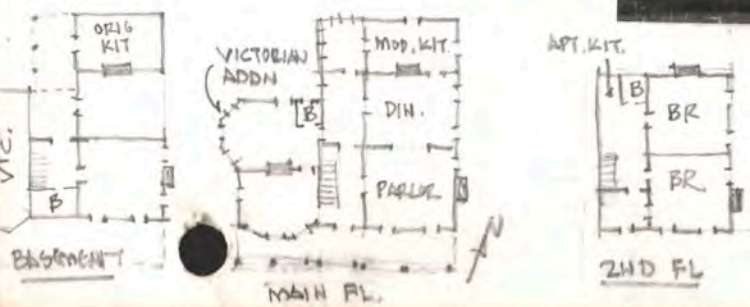
Jim & Nancy Gaines
paid \$16,500 for this
house in 1972. Spent
±\$70,000 on restor. in '72-'73.
Sold in ±1987 for about \$50,000



CALHOUN
ST.
↔

RANDOLPH AVE
↔

10511



AN

CIRCA 1824 GEORGE STEELE HOUSE
519 RANDOLPH AVE - HUNTSVILLE, AL.
PHOTOS 1972 BY HARVIE P. JONES, FAIA

IN 1972, HSE. CUT INTO ABOUT 416 APTS,
RESTORED/REMOD. 1972 BY JIM & NANCY GAINES
JONES & HERRIN, ARCH. - HP JONES



↖ N

VIC. → ← FED.
(PARCEL 20TH C.)

VIC. ← FED.

N



↖
GABLE
EDGES
EXTENDED
LATER
(SEE STS.
INDICATING
ORIG. FEDERAL
FLUSH EDGES
AS TYPICAL FOR
THE FED. PERIOD)

→ N

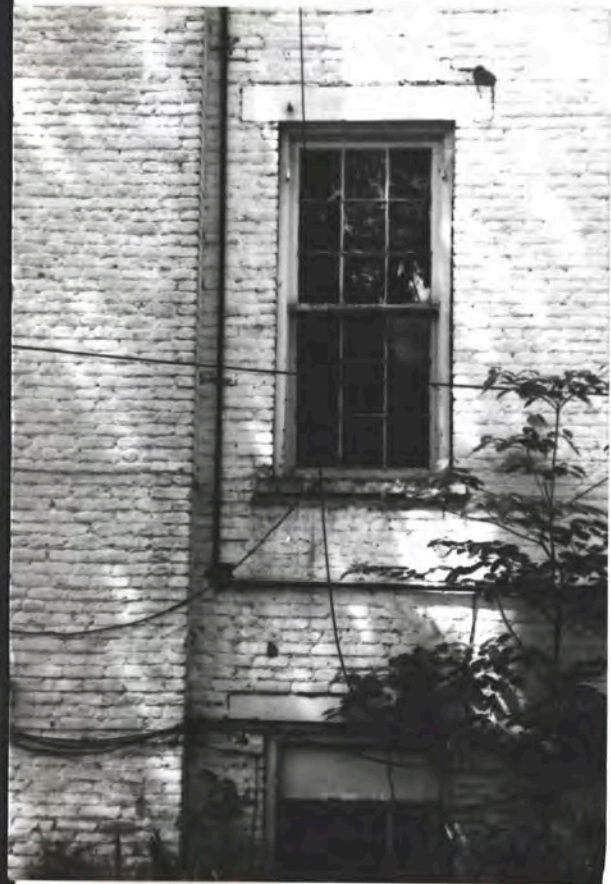


NOTE
"BOSTON
GUTTER"
ON ROOF
↖

→ N

↖ N





EAST SIDE



EAST SIDE

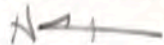


NORTH REAR FEB. 20TH C.

NOTE CUT-OFF WALLS
INDICATING A FURTHER
EXTENSION NOW DONE

C. 1824 Steele Ave
3 of 11

FED.
2ND FL.
N. WALL



N. W. SIDE

ALL CLAYED WALLS = 20TH C.

→ VICTORIAN ADD.

4



WEST WALL AT REAR 20TH. E.
PORCH ENCLOSURE

5 of 11
1824 Steele Hs0



N.W. REAR PORCH AT GROUND LEVEL
STRUCTURE IN FOREGROUND APPEARS
TO BE FED. PORCH COLS. + JOISTS

N
↑



ENTRY → N



PARLOR (S.E. RM.)

N →

GREEK REVIVAL
WINDOW TRIMS
PROBABLY MID 19TH C.
CONCURRENT W/ EAVE
EXTENSIONS AT GABLES
(PG. 2)

MANTEL = FED.



DIN. RM.
(EAST CENTRAL)

WIDE ORNG. W/
GREEK REVIVAL TRIMS
PROBABLY MID 19TH C.
MANTEL = FED.
CURB'D = 20TH C.

N →

c. 1824 Steele Hse
7 of 11



AN 2ND FL. S.E. RM.



2ND FL. N.E. RM. NA

CUP B'D +
CEMENTIC
TILE =
20TH. C.



2ND FL.
S.E. RM.

GREEK REVIVAL
MANTEL,
20TH. C. CLOSET
+ CEMENTIC TILE



ITALIANSTE
MANTEL

1ST FL.
E. CENT. RM.
(DINING)

←
TO
N.W.
PORCH
(ENCLOSED)

1ST FL. N.E. RM. (MOD. KIT.) TAN
FED, W/ ITALIANSTE MANTEL ADDED.



CARPENTER
BRAND
LOCK

FED.

ADDED
"SHOE"



←
PEGS
←

ONE PR.
C. I.
HINGES

← FED DOOR, LOCK, HINGES + TRIM →

→ N

9 of 11
c. 1824
Steele



VICTORIAN ADD, ATTIC ↗ N



N ↗
Ø TO 2ND FL. N. E. RM
2ND FL. ENCLOSED PORCH



2ND FL. APT. KIT. ON N.W. PORCH (ENCLOSED) ↗ N



BATH IN VIK. ADD'N N.E. RM, ↗ N

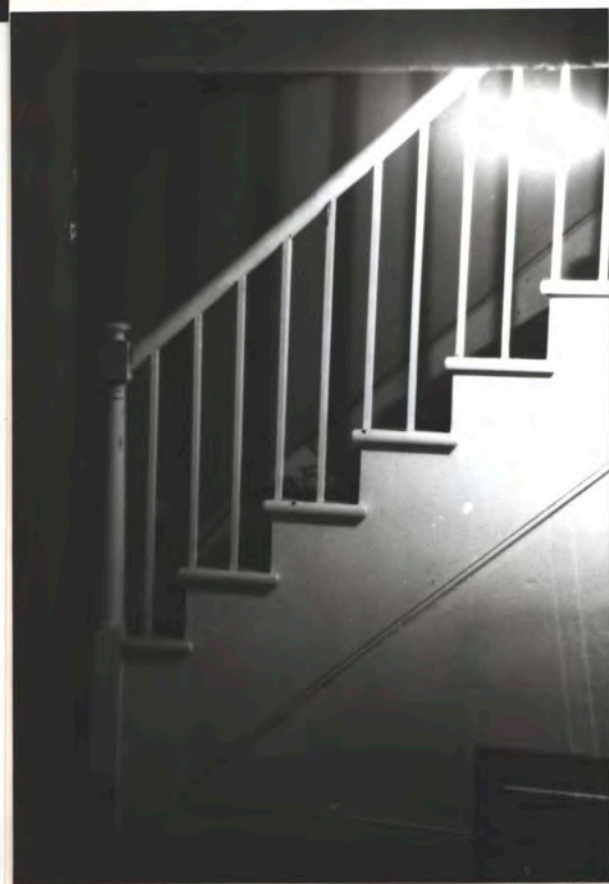


N



N

BASMENT STAIR (FED.)



N





c.1824 Geo. Steele Hse
519 Randolph Ave.
Restored/Renov. 1972 by
Jones & Harrin, Arch. - W J
photos (pg. A & B) Dec. 86 HNS

(A)



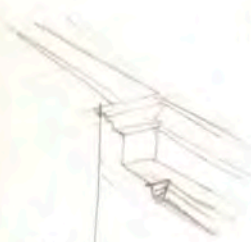
(B)

Proper blinds added at wing
 of 173 in 1987, replicated
 from blnds on Albanis Hse
 by Jaynes M. M. M. of
 Florence, Al. N
 →



Raleigh

1824 George Steele Hse
 N.W. Corner Raleigh Ave & Callhoun St.
 Photo July 1967 HP Jones
 Restor/Re. 1972 by Jones & Harrison, Arch. - 12P3



Main Roof
 Eave-ends
 were like this
 originally
 (typical Fed.)
 per saw-cuts
 in cornice.
 See N.E. cor.
 of kit for
 a surviving
 example, P13

N
 →



✓ Vic. wing. Facade remodel 1972
 by J&H - 149 ✓
 ✓ Vic Porch remodel 1972

Raleigh
 ① of 6



→ N

↑ Calhoun →
Iron fence installed
about 1975.
Origin? Date?
(Jim Gaines got it)

Correct sash - blinds & hardware installed 1987
Made by Jaynes Millwork of Florence, AL
(hardware also) patterned from c.1832 Cabiness Hse
east of here (excellent job) Holbaches replicated
from c.1828 Belle Mort, Tusculumbia, AL,

(N)



← Storage room
 not built
 by HD
 proposed
 (too deep)

[] Not typical Fed. Period
 eave-end return (one of
 few still intact)
 Main Hse originally had this detail, per save-ents visible

↑ N

Photos
 July 1987 HD
 1924 Studio 1251



White roof-line trace
of earlier bldg.
June before 1972

✓ perches, enclosed in 20th c.
Remod. 1972

27

A



N →

photo
July 1987

originally open porch,
enclosed 20th c.,
remodeled 1972 J&H, HS

vic. wing

remod 1972



N →

These photos made in prep. to design
2-car gar. + veranda for Eugene & Ann Montgomery, who
bought this house in 1987. HS did Ann Montgomery (Beck)
house on Eustis Ave about 1982



Architectural details
shown existed in
1972 prior to restoration

View N.W. wing



Gen./Remodel by H. Jones, 1987

1824 George Steele's Home
Raleigh Ave, North

11
4+ Photo Sept. 1991 H. Jones in prep. for
2nd yr. addition over the rear wing, NW part

Edwin Burke & Gene Montgomery looking at 1972 plans by HJ



S. Front



Portico = c. 1974
44-113
wing c. 1900
also from
front porch
removed c. 74



JT. =

evidence that
originally the
eaves-cornice
stopped even
w/ the gable
in the usual
Fen. manner.
Eaves extended
perhaps mid
19th cent. to
update the
house



Sept 24 photo = 113
c. 1924 Stone 1st
519 Parkside Dr
Restored from 5 or 6 cheap
rooms / rights by JH Arch. (113)
in c. 1974 for \$17,000.
Owner (Jim & Nancy Swine)
restored for \$16,500.
Total = ± \$85,000
SMA in c. 1986 for a
restored ± \$500,000 (Ann Bark)



E. Side



E. Side
+ H. Road

eng. by AJ c. 1986

5 ft
4 ft



W



H-
 Porch = 1974
 Facade of west (Vic.) wing = 1974
 Jones of Herkin, Arch. - H. Jones
 Porch not executed / details
 Column proportions
 Clo = reused from old turn-of
 century porch

N/A - See 1974 "before"
 photos mtd. in 20"x30" bds
 at HS Res, 420 East St Ave

Photos July 94 HJ

1824 Steele (George, Arch.) 1st
 N.W. Corner Randolph & Calhoun St.
 1 of 9 Huntsville AL.

Restored from 16 cheap apts. in 1974 by JFH, Arch
 Bought for \$16,500 in 1974
 Restor. cost ± \$70,000 in 1974
 H. Jones



N →

Main N. S. E. parlor
Orig. mounted

PARLOR

parlor

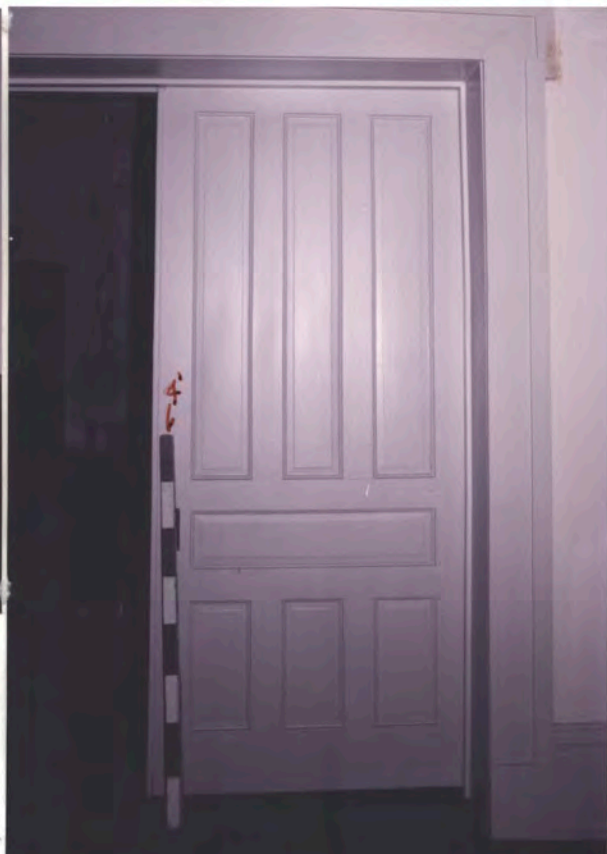
→ N



↖ Parlor, looking into Din. Rm.
Sliding Mt. done from
Parlor to Din. Rm.

3110

N
↖

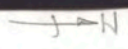




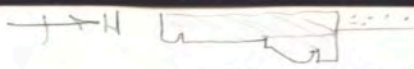
Not orig. of
Not by
HO
(over. m.)



Preex
hall



DIW. RM



orig. of TRIBLE
LITE - FEB.



Preex

orig. TRIBLE (shel. by) prob. by cut off short
(rounded later)

4



2/2



↑ N

MAIN FL. ENJOY

Orig. Stair

5A10



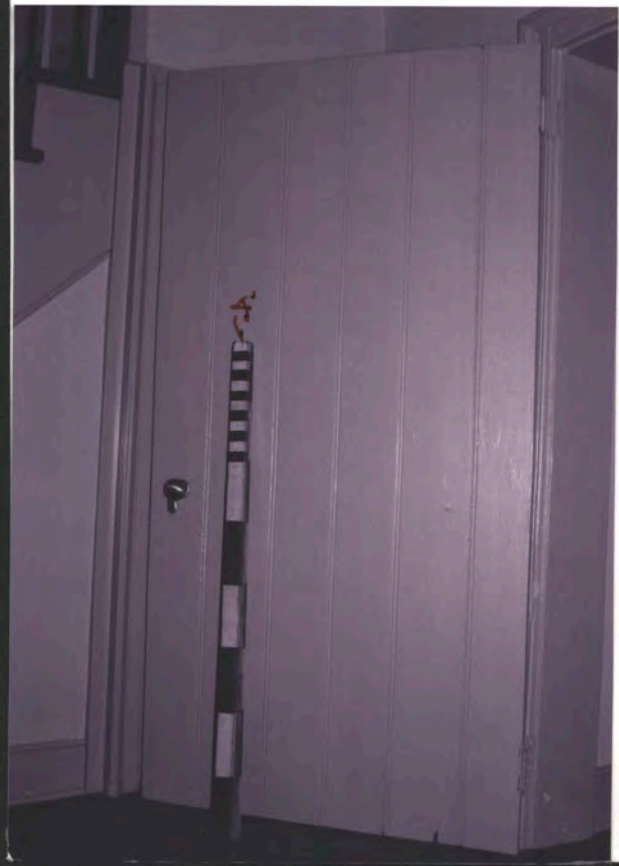
→ N



→ N

Stair up to
main fl.

BASMENT STAIR + HGR
(orig. stair)



→ N

orig.
Ed. of BATH
door at
basement
stair
hall
N. end



mod.
lock

6



HST

BSMNT. S.E.-B.R.
Orig. Mantel (FED.)

HST





This is
an
amputated
Fed wanted
NOT done
by H. Jones

When is
this formerly
nice mantel
from?

ORIGINAL "WINTER KIT." fireplace & crane
found walled-in w/ bricks in 1974.
BENNETT N.E. Penn Wing Run.

↓N



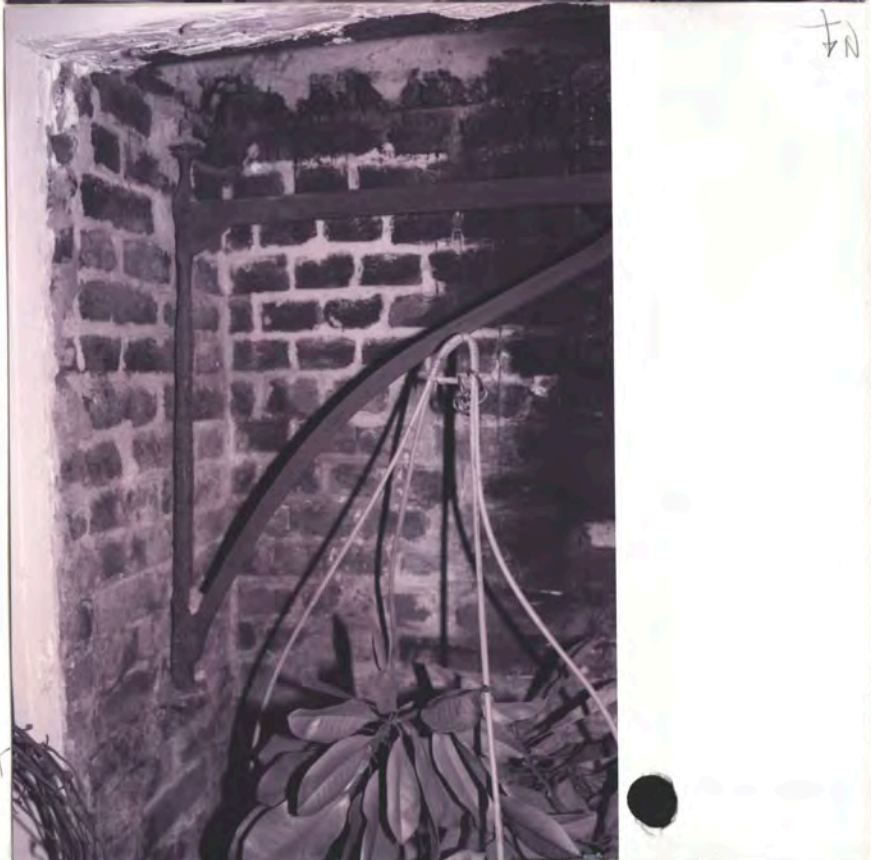
↓N



Note 90°
sides of
fireplace to
better keep
heat in
the F.P.
TYPICAL of
cooling
fireplaces

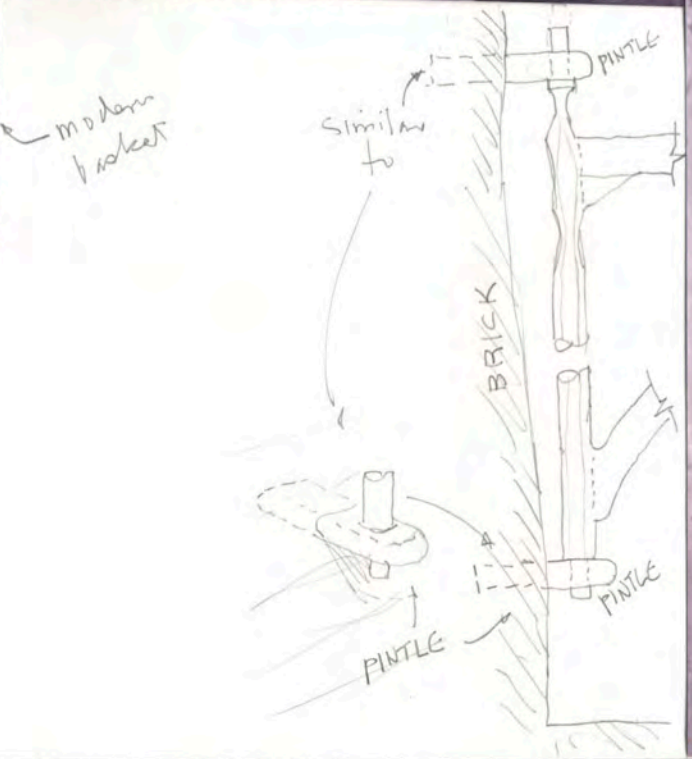
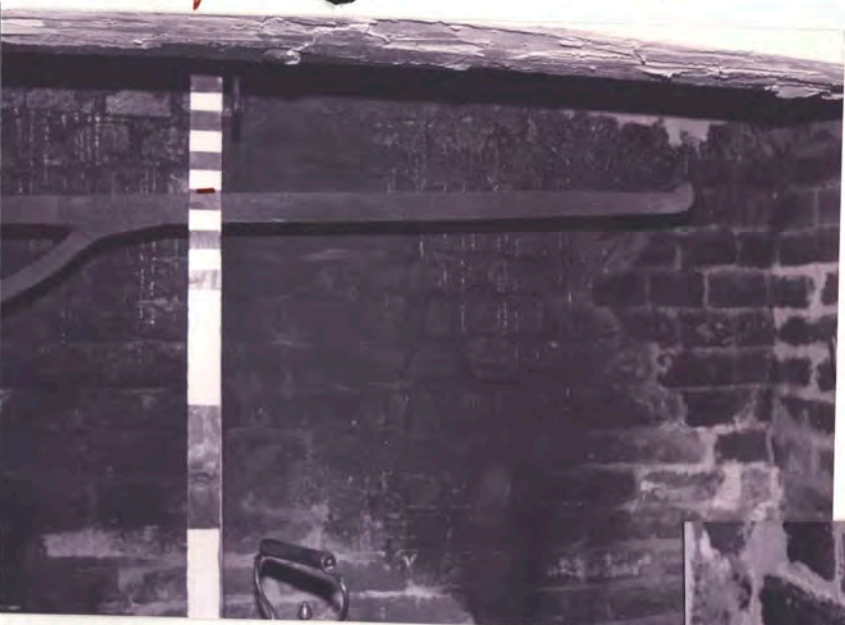
↓N

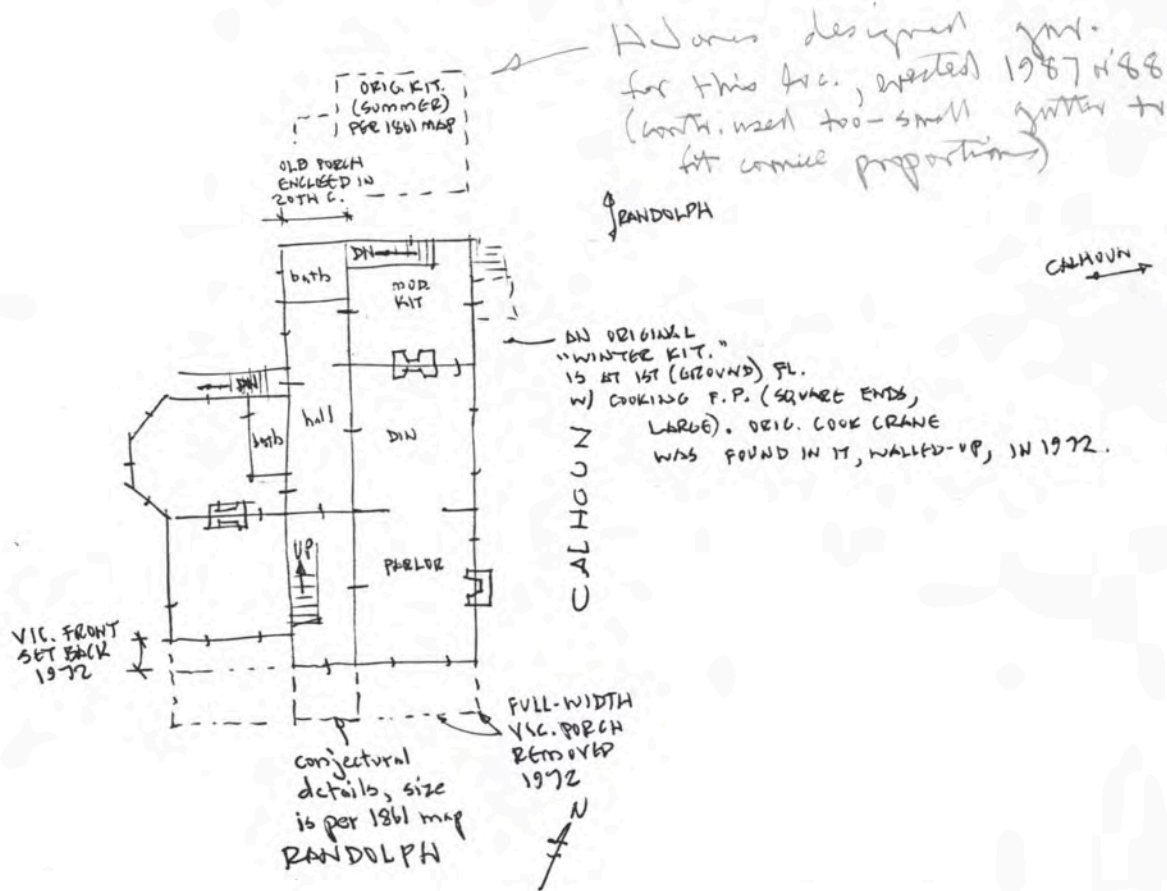
↓N



↓N

23-57h.





baniss Use at 413 Randolph
 St. (made holdbacks also,
 Columbia). This house originally had blinds

1824 George Steele Use
 519 Randolph Ave
 Huntsville, Al.

photos July 1987 HBS
 Restor./Remod/ Addn 1972

by Jones & Herrin, Architects
 H.P. Jones, F.A.A. (For Jim & Nancy Gaines)

1872 ... Gene ...

RANDOLPH

CALHOUN