

1932
Stengall
Hotel

Everett Bldg. 1899
(Apts on 2nd fl.)

Yarborough
Hotel
c. 1920's



Stengall Hotel 1932

Everett
EVERETT BLDG
N. Washington St.
photo June 1982 AP Jones

N. WASH.
ST.

P.S. - Everett bldg. gutted
except for the front wall only
to build a club in 1984-85
by J.T. Schmincker, owner/conts.
Also bldgs. S. of Everett.
(Heritage Club)



demolished
c. 1981-2



1899



Everett Block 1899
photos June '82 HS

1899



Huguley's

1899



Mason Bldg }
 - Yarb. Hotel S. face

NA
 Alley behind
 Everett Bldg.



NA
 later makeshift stairs

Yarb. Hotel rear (S)



NA
 Everett Bldg - June 82



3 of 6

were narrow continuous
balconies at 2nd fl. apts
(gone many years)



N. Wash. St.

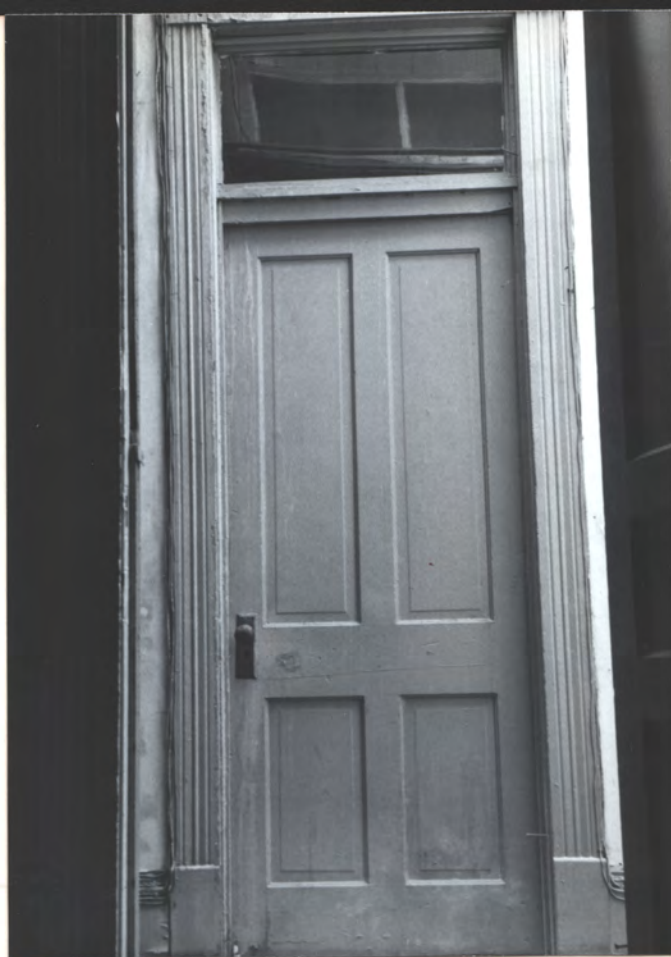
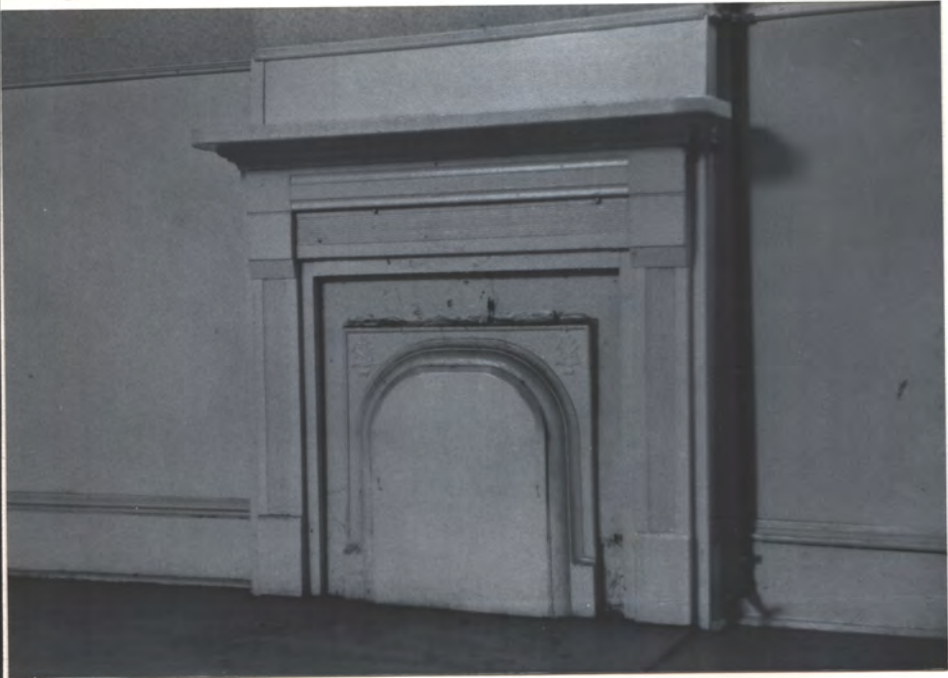
demolished bldg in 1982±

N →

Everett Bldg 1899

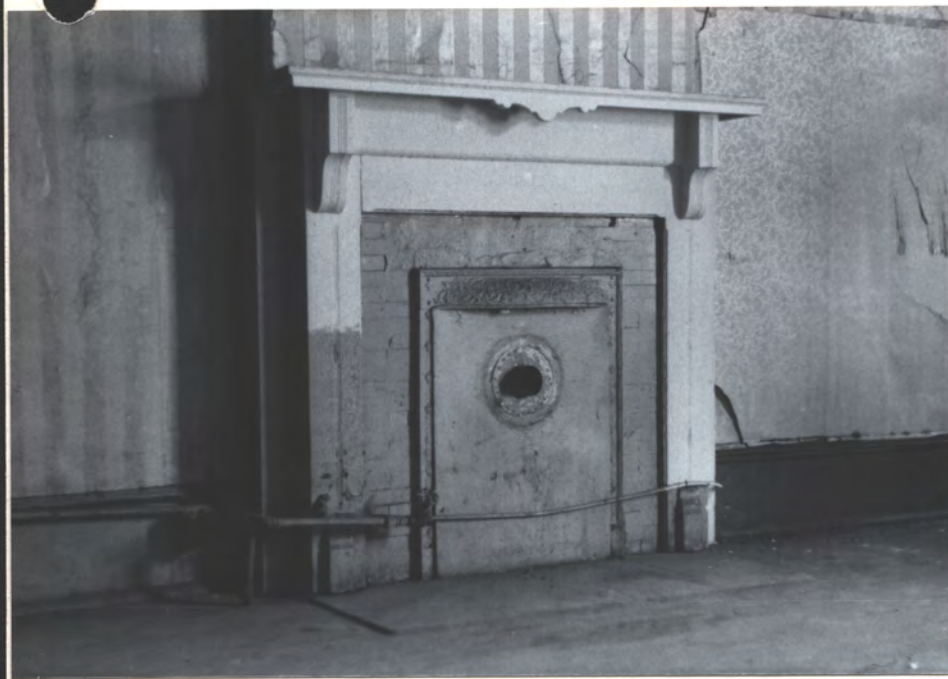
Allen
glass-block in addition

A



Apts. at 2nd fl. of Everett Bldg. - c. 1914(?)

skyl'tg



Method of daylighting the interior rooms

1899
5 of 6 - Everett Bldg. - N. Wash. St. - June '82
HAM

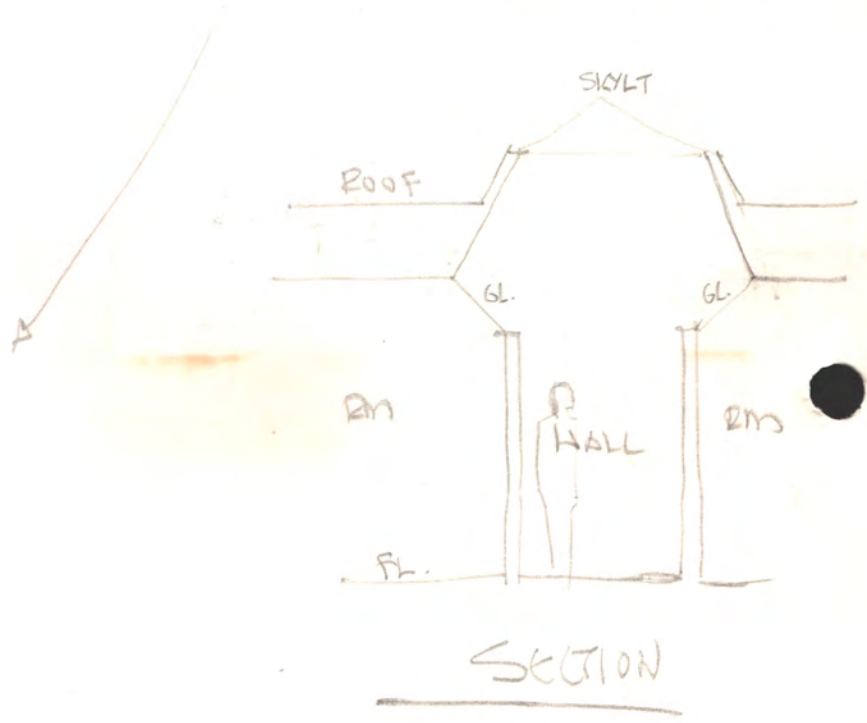


H&M



H&M

Skylits to let some daylight into the central rooms





← DUNNAN'S
BLDG

WASH ST.
←

③

← CLINTON

← N ST

later Remodeled 1983
by JH, HW
(4 wood arches)

May 1982

May 1982 HJano

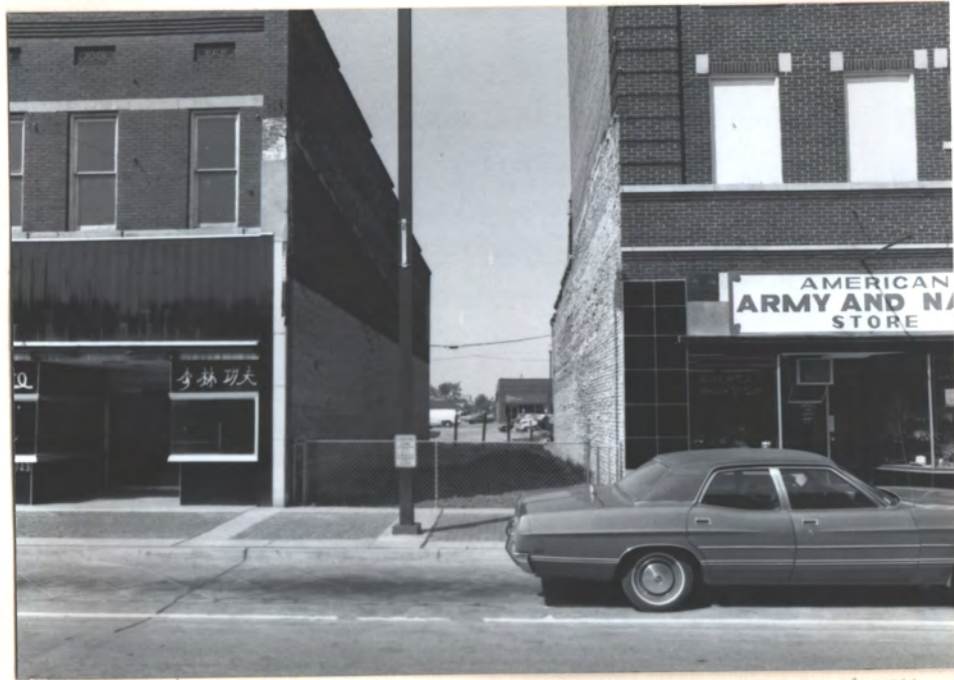


CLINTON

WASH. → N



→ N N. Wash St., W. side



→ N

YARRERDULL HOTEL



N. WASH. ST.

→ N

NORTH
WASHINGTON
ST.



↑
CLINTON AVE.

STEGALL HOTEL
1861-1932
(rebuilt after fire in 1932)



N. h
We
(all

This bldg. entirely demolished & rebuilt
in 1944 except for front of new masonry only



YARBROUGH
HOTEL

1899 EVERETT BLDG
N. WASH. ST., H'VILLE

N. WASHINGTON ST.
West Side N. of Clinton Ave

(all remodelled in 1984 by J.T. Schrimmer Co., no architect)

North

photos 1982

This bldg. entirely demolished & rebuilt
in 1944 except for front of new masonry only



↑ CLINTON AVE.

STEGALL HOTEL
1861-1932
(rebuilt after fire in 1932)



1899 EVERETT BLDG
N. WASH. ST., H'VILLE

N. WASHINGTON ST.
West Side N. of Clinton Ave
(all remodelled in 1984 by J.T. Schmirer Co., no architect)

→ North

↑
YARBROOK
HOTEL

photos 1982



Everett Bldg. Details
N. Wash. St.
1982

129 N. WASHINGTON ↓



↔ HOLMES AVE

Marborough Hotel
1920's

↔ N. WASH. ST.

↔ N

P.S. — Remodeled 1985 by J.T. Schmittler Co

photo
1982



May 1982



Alley between N. Wash St. + Jefferson St. (N-S)





N. end of Alley to W. Clinton Ave

N. 



S. end of Alley

N 

W. Clinton Ave 

1982

Marbrough Hotel



N 4

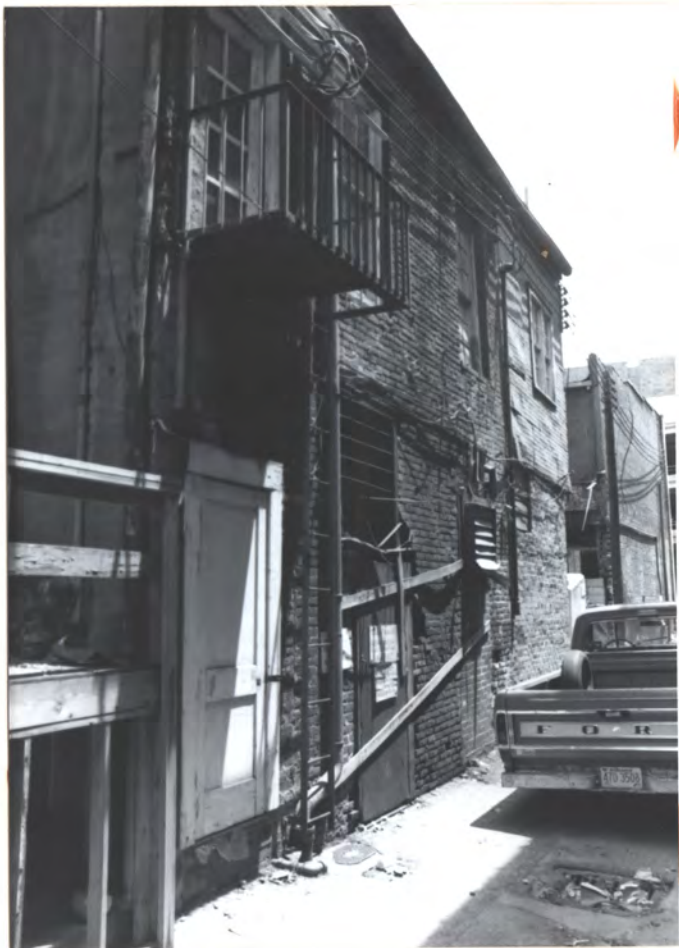


N 4



N 4

Alley between N. Wash. St. & Jefferson St. (N-S)



~~Not~~

~~Not~~
Alley between N. Wash St. & Jefferson St. (N-S)

1982



→



→



→

Alley between N. Wash St.
+ Jefferson St. (N-S)

1982



Present Daily Times

N. Wash. St., West side, "Heritage Club" in 1984

"Heritage Club" in 1984

Tricknam Hotel
Dorrol, c. 1973

Dummitto



N. Wash. St.

N