

Hotel Russel Eskine

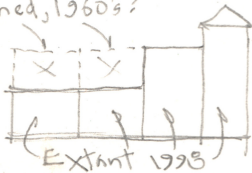
121 N. JEFFERSON

200 N. JEFFERSON

SEPTEMBER 25, 1935



burned, 1960's?



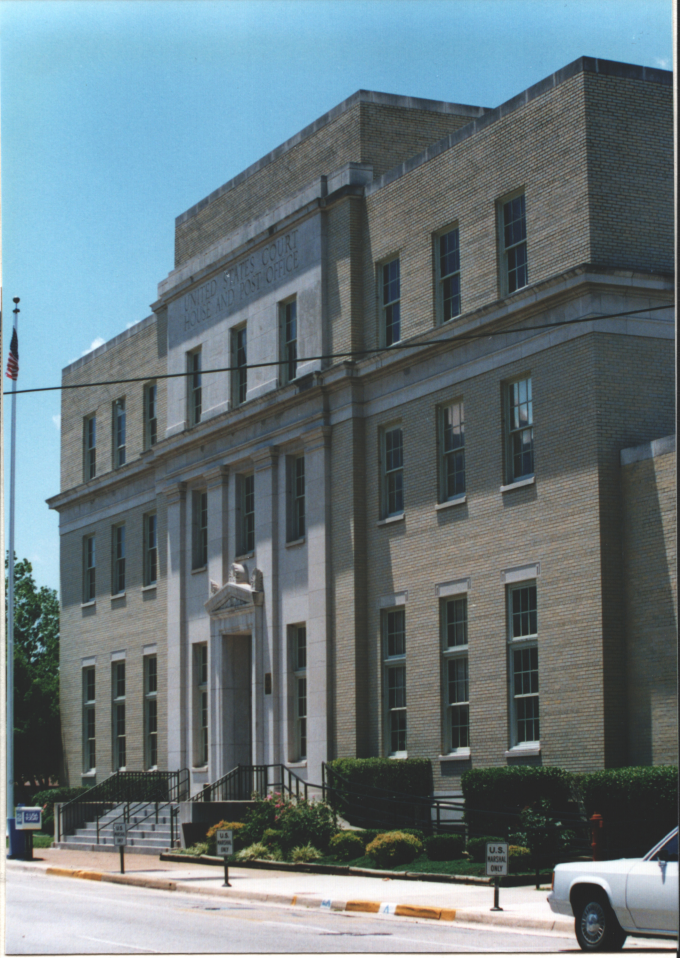
demol. in 1960's  
"Urban Renewal"

SEPTEMBER 25, 1935



Constr. photo of 1936 Post Off. at  
N.E. corner of Holmes & Jefferson - 101 E. CLINTON  
Amitzville, DC. (later the Fed. Ct. Hse)  
Copied Mar. 98 by H.P. Jones, FAIA  
from print in lobby of 1940's P.O.  
on West Clinton Ave

1936 Post Off.  
& Vicinity



1936 Post Office  
W. Holmes Ave  
at Jefferson St  
photos June '98  
A Jones

