

FORD-COUNTRESS Hse

CA. 1822

(photos = late Vic. at least)

MERIDIAN PIKE

COUNTRESS RD.

N  
N  
N

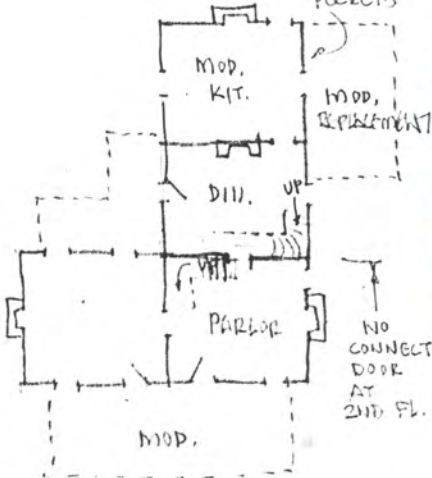
⊠  
↓  
FRONT

H'VILLE

photos 1982  
(not by HS)

COUNTRESS RD IN REAR

SEE ORIG. ROOF  
JUST  
POCKETS



PLAN BASED ON PHOTOS &  
MEMORY FROM 1970 VISIT  
(VERIFY)

LOOKING S.E.

1 of 6



SOUTH FRONT, ADDED PORCH & SHED RM.



WEST



FORD-  
COUNTRESS  
1822



← THIS INTACT CHIM. CORBELLED  
CAP PROBABLY IS SAME AS  
LOST CAPS



looking S.E.

← NOTE TRACE OF PREVIOUS  
PORCH ROOF-RIFTER ENDS  
IN BRICK



← NOTE TRACES OF  
PREVIOUS ROOM OR PORCH



looking SSW  
(20th. c. Rm)

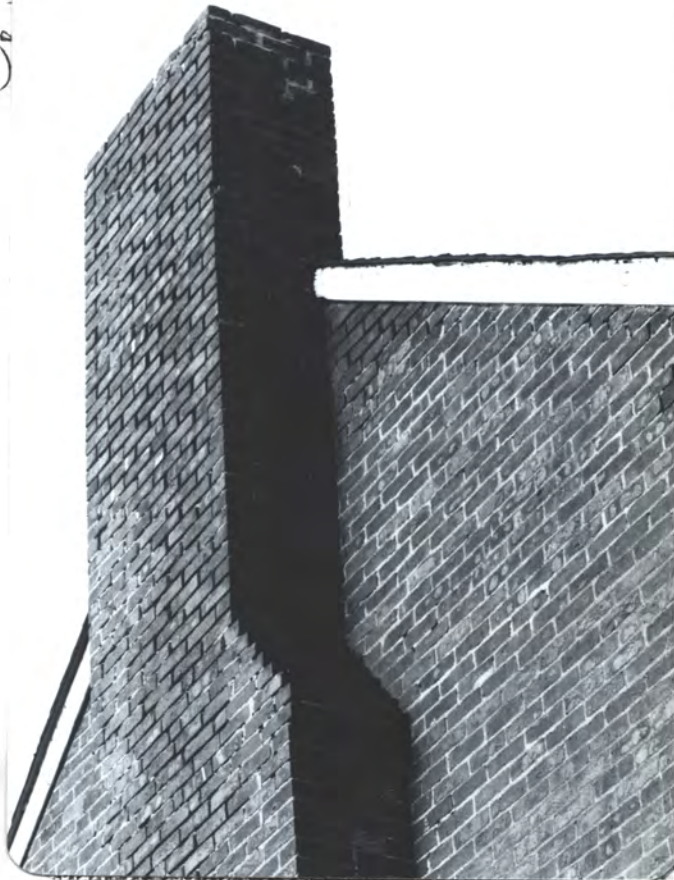
looking  
ESE  
(N.E. WING)





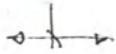
cap-corbels  
lost  
(see ch. 2)

IS LOST  
AT PG. 5  
bottom  
photo



WEST GABLE (note tapered  
rake-fascia = typical)

COMMON  
BOND  
(N.E. WING)



RUNNING BOND  
(N. WALL OF  
W. WING)

ALL RUNNING-BOND  
(FRONT WING)



9/6  
SASH  
PROBAB  
ORIG.

C. 1822  
FORD -  
COUNTESS  
3 of 6





S. FRONT  
(ADDED PORCH)



WEST



WEST

N. GABLE  
 (common bond)  
 these sashes probably slide  
 horizontally (common) →  
 2-brick projection  
 at chim. shoulder →  
 = typical Fed.

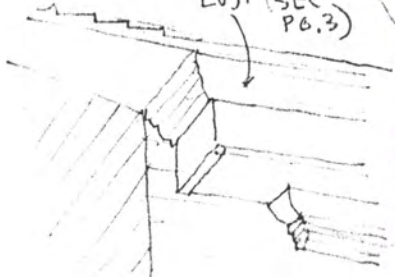


N. GABLE



RAKE - FASCIA SET FLUSH  
 W/ BRICK = UNUSUAL (USUALLY LAPS)

MOULD  
 LOST (SEE  
 PG. 3)



RECONSTRUCTION  
 (IS TYPICAL FED. DETAIL,  
 LIKE 1813 WEEBEN HSE  
 + MANY OTHERS)

2/822  
 FORD-





— SEE SKETCH ON PG. 5  
FOR LOST MOULD

S.W. CORNER



VICTORIAN  
BACK PORCH



LIMESTONE FOUNDATION  
(COMMON TO BE EXPOSED  
IN FED. PERIOD)

60516



VIC. SCREENED DOOR - REAR



REAR PORCH, W. SIDE OF N.E. WING (VIC. BRACKETS)  
NOTE RAFTER-HOLES IN BRICK  
NOTE WROUGHT IRON TIE-BAR END ("WASHER")  
↓ = COPIED FOR CLAY BLDG., CONST. HALL PARK



c. 1822  
FORD -  
COUNTESS  
7 of 16



AGE 7



AGE

C. 1822 FORD - COUNTESS





BLIND (WAS IN COLLAR)  
(FIXED - BLADES)



MORTISE, TENON  
& PEG JOINT.

CAST-IRON HINGE



AGE?

hen-nests



Joists =  $\pm 2'$  ac. = typical



HOUSE: IN CELLAR  
HEWN FL. JOISTS.  
- THIS JOIST - APPEARS  
FOOT-ADZED, RATHER THAN  
AXED (USUAL) - ?



← BOTTOM OF FL. PLANKS

← FOUND

(Note -  
p. 10 is  
blank)

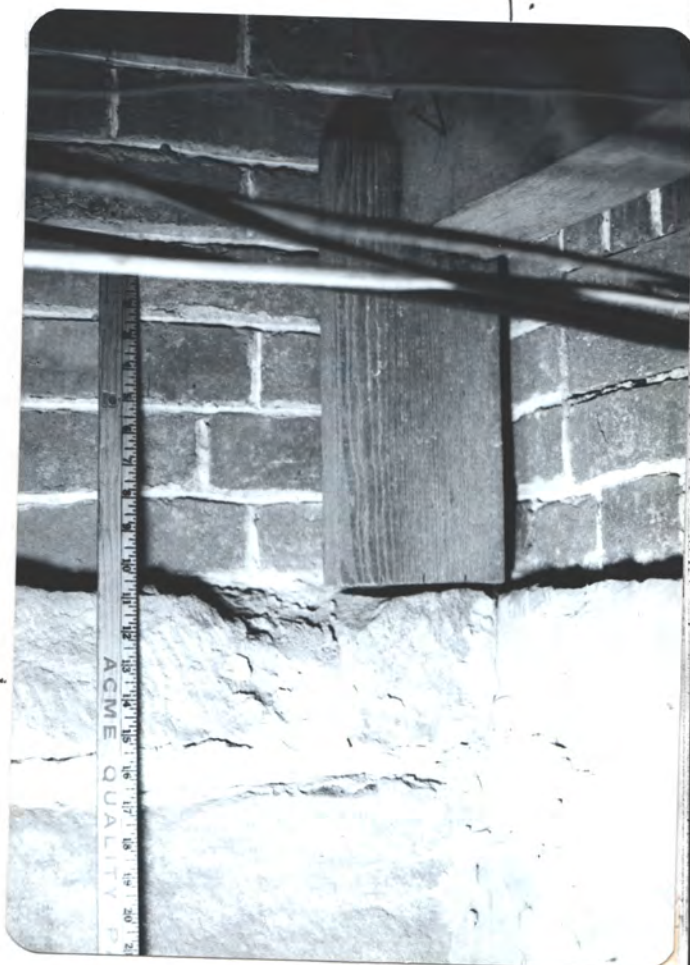
BOTTOM OF  
FL. PLANKS



↑  
TENON  
END

SASH-SAWN  
FL. JOIST

STONE  
FNDN  
IN CELLAR





$\pm 6'4''$

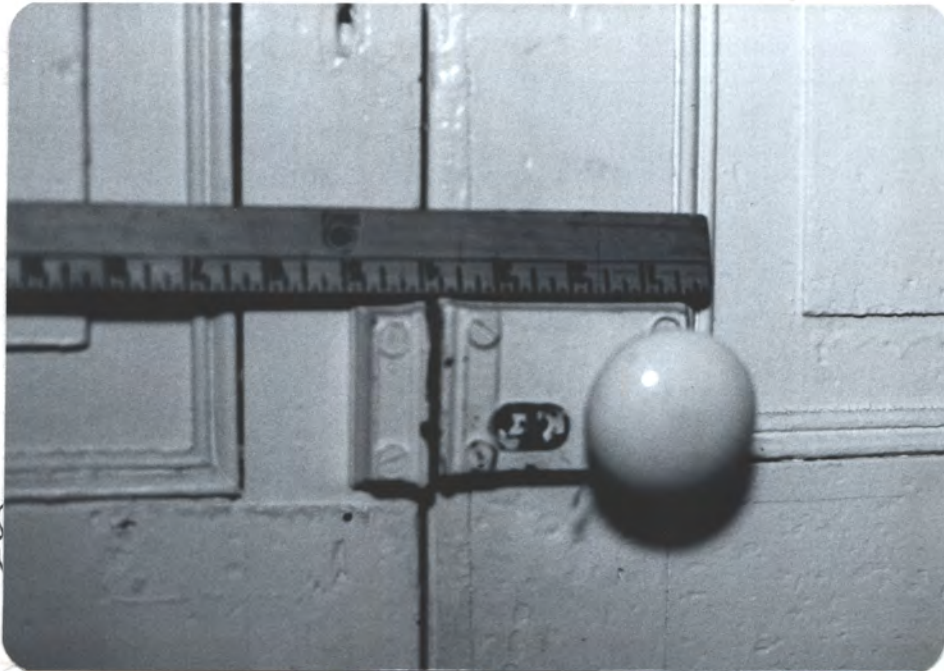
$5'8''$



note  
chair  
rail

EXT.  
Gauged (tapered)  
Brick at  
flat arch

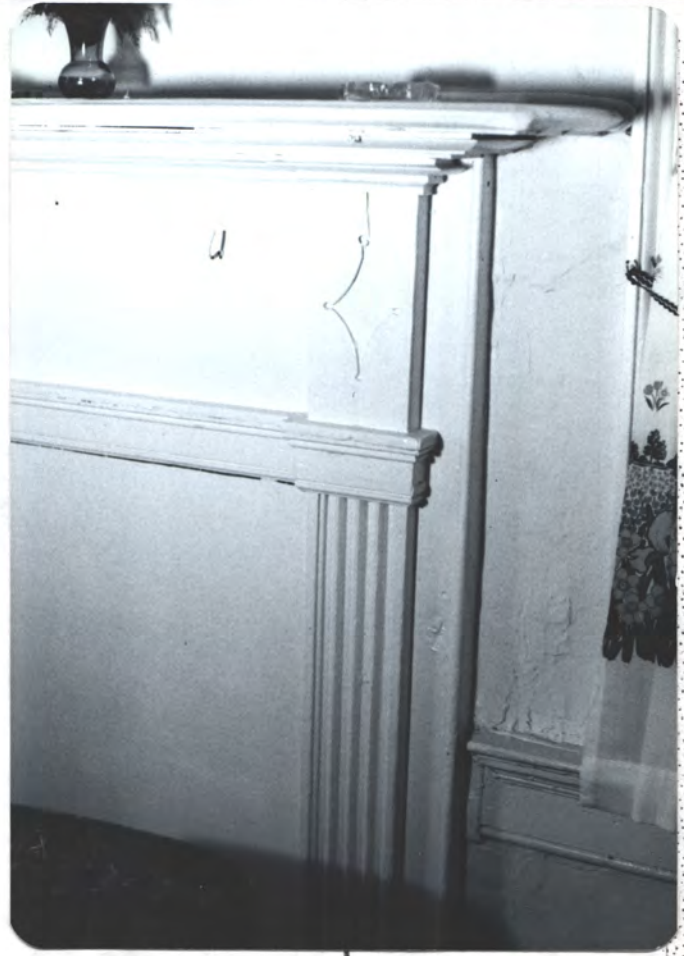
ENTRY DOORS INT.  
DOORS APPEAR ORIG., EXCEPT HARDWARE



TRACE OF  
FED.  
SLIDE-  
BOLT

LATE VIC. RIMLOCK

MOD.  
HANG.  
RODS



FED. MANTEL - 1ST FL. N.E. RM  
HANG FED. CHAIR RAIL



SEE PG. 3 FOR ORIG. 9/6 SASH



2/2 VIC. SASH REPLACEMENT (S. FRONT)  
C.1822 Ford - Countess

SHOE-MOULD ADDED AT BASE  
- MOD. LINOLEUM FL



1ST FL. S. E. (PARLOR) MANTEL = FED.



BACK STAIR (IN N. E. WING) UP



FRONT STAIR

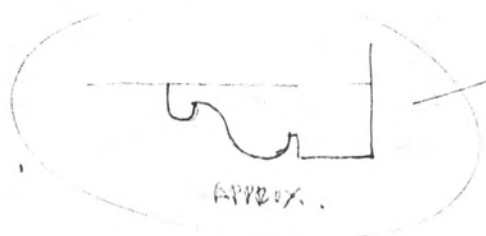
↳ unusual  
base



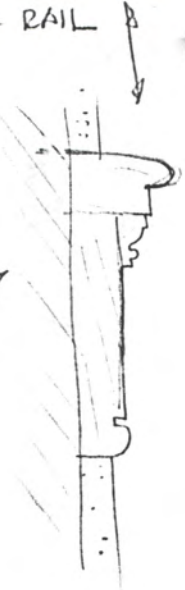
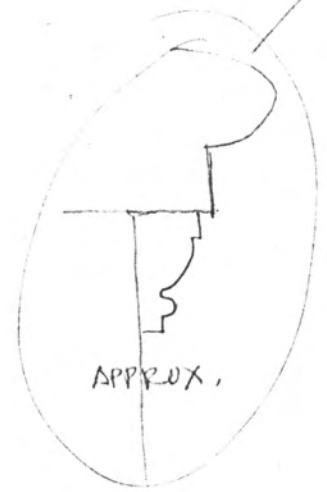


DOOR JAMB

CHAIR RAIL



TYPICAL  
FEED,





House No. 2.

The Ford - Countess Home

Countess Lane

This lovely old house had a beautiful setting and the winding drive gives you a good view as you approach it.

This house differs from most of the houses of this era in that it does not have a central hall nor a central front door. There are two doors across the front, giving it somewhat the appearance of the "duplex" of a later time. ~~The two rooms across the front cannot be entered except by going outside or mounting a few steps to a landing and going down a couple of steps into the other room.~~ This <sup>A</sup> same stairway also goes to the second story into one of the upstairs rooms. *in the room on the right.*

There are two rooms, up and down, ~~in~~ the el at the back. The upstairs rooms in the el are reached from steps from one of the downstairs rooms. These rooms do not connect with the upstairs rooms in the front of the house. *(Typical of several Madison Cr. of Limestone Cr. houses. One side was boys', one girls')*

The house is of handmade brick and the walls are three brick thick. Tradition has it that the brick was made on the place from clay taken from a near-by-field. There is still a big round hollow in one of the fields that gives credence to the story.

The house was built by John Ford about 1822. He was the brother of Hezekiah Ford who was the very first buyer of land in Township 2, in which most of these houses on the tour are located. John Ford died in 1849 and is buried in the family cemetery about a half a mile from the house.

The school house still stands in the yard.

The present porches were not a part of the original house and should be ignored.

*by Miss Alice Thomas  
(for a tour) C1972*