



→ N



→ N

→ N
bath - 20th c. (put on verandah)

704 Adams St - Smith Hse
Late Fed or Gr Rev, + pre 1861 Ital. Si. Wing
+ front verandah

(int. trim at orig. hse = Greek Revival style.
Gl. panes typical of 1840's - 50's at orig. hse)

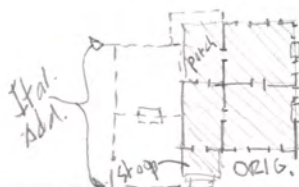


→ N



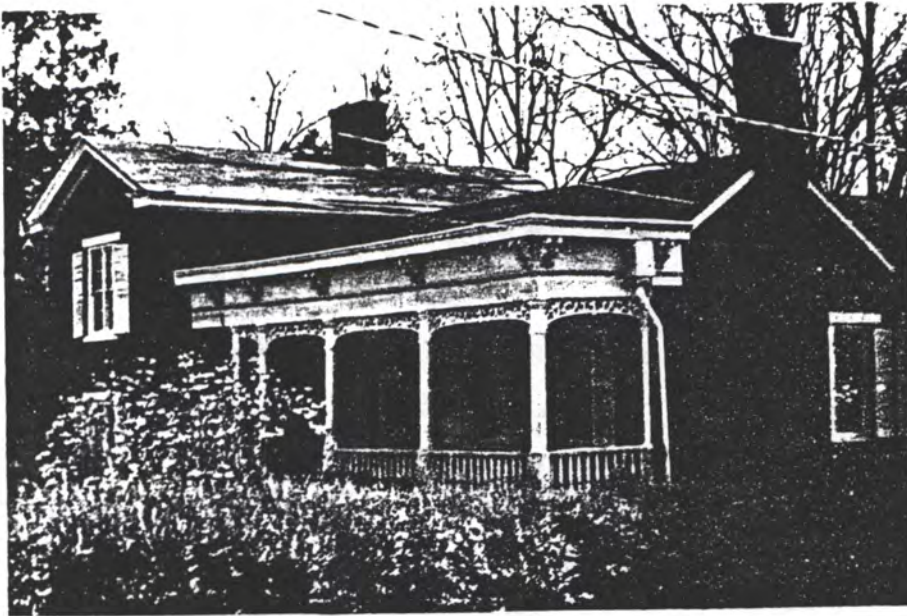
→ N

Photos H.P. Jones + R. Allen
April 1978



Ital. Add. pre 1861
ORIG. HSE (FED.)
windows still under Vic. (Ital.)
Ital. Verand. pre 1861 verandah

1 of 5



cut - patch lines for Fed. stairs (down) were still in entry fl. in mid 1978 when they were pieced-out by R. Rutledge, contractor

Confirmed 24 Apr. 78 → Probable original house
 Smith-Dark-Luther
 704 Adams St.
 5 April '78
 Jones & Herrin, Arch., A.I.A.



note: 24 April '78
 bricked-up windows are still under porch.
 Stairs on brick at entry door " " indicate
 a wood stoop the width shown above (no brick stoop
 evidence).

Jones & Herrin
 Architects, A.I.A.
 104 Jefferson Street
 Huntsville, AL 35801

27

ALA - 508

75

SEPT. 1928
HUNTSVILLE
ALA.

5

CRUSE AL (CHERRY AL.)

37 BANISTERS ALLEY

LOGGIST ST.

NEWBY ST.

S GREEN

S. GREEN

Late Nig
Catching
Yarnol
6.1975 fm

DR. HANS
W. H. H. H. H.

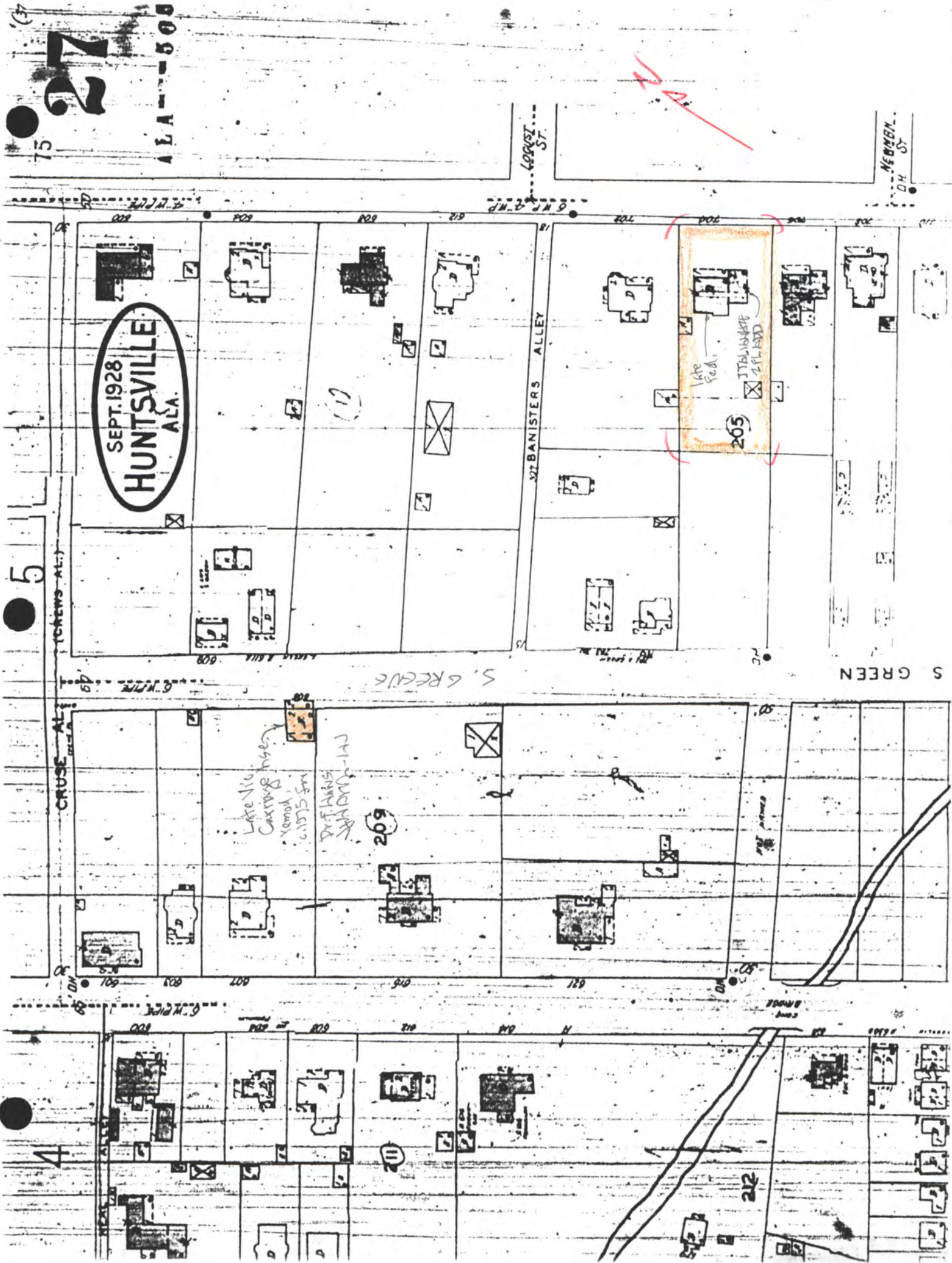
209

Late Fed.
JTBALBART
2 PL. BDD

205

4

212





Note bow of chim. toward hse. = common in old chim.
 Outer fa. gets more wetting, causing a crystal growth
 in the lime mortar - causes swelling of mortar,
 thus bows chim. toward hse. This was partly
 corrected at 1817 Weeden Hse in c.1950 (J&H Arch-HS)



← N. Fed (or Gk) chim.
 at N.E. Rm., N. Wall

← N.W. (Fed or Gk) Chim

↖ N.W. Cor.



← H
 A Jones
 age 48 rear terrace - J&H Arch, 1967 comtn
 (with HS)

photos 1978 - J&H Arch.
 R. Allen & H. Jones

↖ S.W. corner of
 N.W. Rm.



late Fed. or Gk. Rev. - 10th. - Ital.



27

27

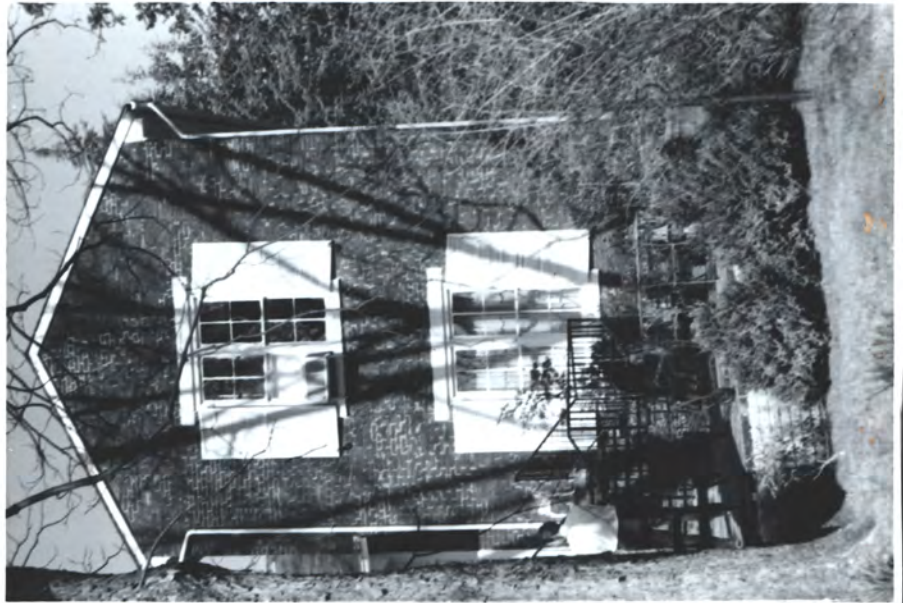
West
Rear

Ital.
(pre 1861)
S. Wing

27



E. front gable
(Italianate)



27



mantle
= mid
20th
cent

mod.
chandel.
↙

↖
Greek
Revival
Trim

22

Hall, look W. to N.E. parlor



Parlor, look W. to Din Rm.



Hall → * → Parlor

→ H
Heart pine fl.
face-nailed, ±6"-7" w., 5/4" thk.
(most typical
of 1800-1860)

HJ →



S.W. Rm. in Ital. S. wing. All mantels gone



Main Fl. (orig hse beyond)



Grnd fl.

N
E

Ital.
stair in
S. Wing



2 Fl. 2 soffit

W →



Grnd Fl. west door under N.W. (orig) part
- door may be orig, except mod. hinges (?)