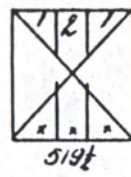


S. GREEN E

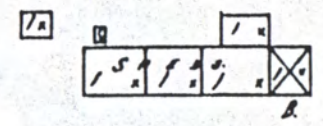
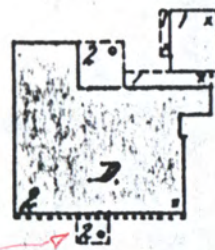
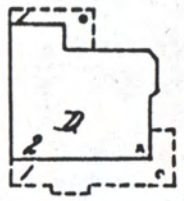
60'

509 1/2



1913 Sinton Map, Huntsville A1
 1870's Shott A2

3A



NOT NAMED

"2" indicates 2-tier Palladium pattern similar to many in the Fed. period. (1825 Colchester etc)

309

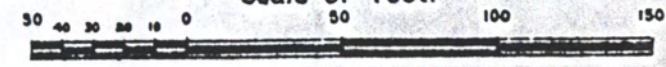
1

313

60'

FRANKLIN

Scale of Feet.

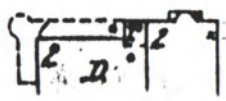
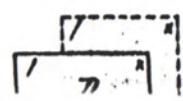


D

512

515

600



Rhett Ave, 621 Franklin St.
Huntsville, AL

Entry + W. Rms = c. 1829

S. Rms = later Fed (c. 1835-40?)

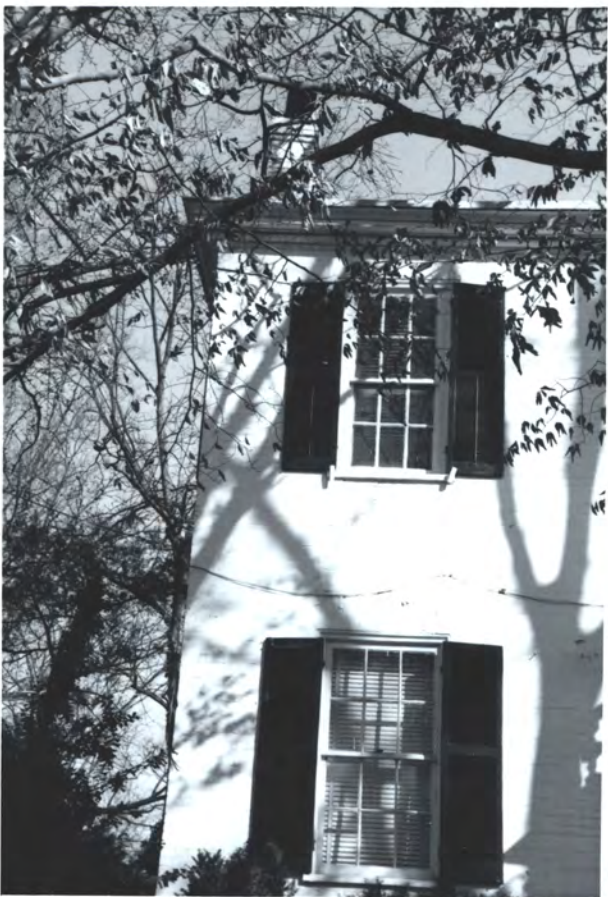
Originally a hip roof at S. w.M.
Gable = Vic., chim. extend up

One orig.
solid wd.
Col. was in
attic in
c. 1976



N. Wall originally gabled
S. wall at add. originally hipped (see attic framing), later gabled (late 19th c. ±)

(Cols. not orig.)



1913 Sanborn map shows 2-story
porch, typ. of many (Fed.), see Codrington

P.S. - these mod. cols. replaced again in c. 1992
by Dr. Curiso, + general renov. party
(Frank Isaac, Arch. - Bham)

