


Late 1800's photo of  
Sprague - Chadwick Hse, built ca 1832

Shakes are now late 1800's  2 over 2 (see overleaf)

Vic. Add. to west of to north (see overleaf)

Clayton Mt. Bldg. at rear (just visible)  
demol. ca. 1974

Note no entry porch. Most Fed Hses had none

Compare w/ 1975 photos overleaf

Door appears dark color

Trim appears white

Appears to have built-in gutter (Most Fed. Hses did)



orig. photo  
ca. 1860-1880?  
Copy 1976 ±

c. 1830's  
Chadwick  
Hse  
N.W. corner  
Randolph & Lincoln



Cast iron rail - see at photo at rt. →

long empty of architect at time of  
these photos, in 1970 (H Jones)

adj. to  
vic 125  
demol. 1970s

false chim.

real chim



vic. →

late 1800's original  
KIT.  
Demol. ca. 1973



vic. west wing →

Sprague - Chadwick  
ca. 1832 + vic. others  
4 photos in 1970 - H Jones

Sprague - Chadwick Hse  
 photos ca. 1978 - H. Jones

False chimney →

tapered roller fascia →

one type of Typical Fall  
 2/2 late 1800's sashes →  
 some terminations →



These blinds not orig. to house - are from houses demol. in 1960's by "Urban Renewal" on west Holmes Ave - are was 1820's



Note high-quality brick in all-running bond on public face - & cheap brick in common bond on other faces (typical of the early 19th cent.) →



Entry (glass added to door)

S. sash & blind is from another house → modern holdback

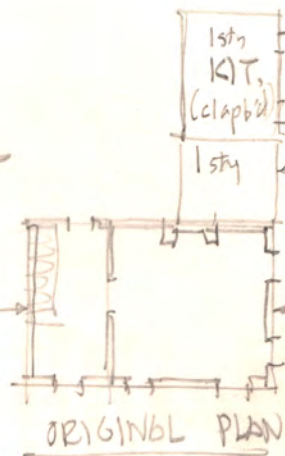


Typical Fed. Foundation vent.  
 Brick "fence" is later, as ground built up

heavy  
 cedar  
 lintel

diagonal  
 square bars

false  
 chin



see c. 1880  
 photo +  
 Sanborn  
 maps  
 + 1860 map

ORIGINAL PLAN



1995 photo - Chadwick (H Jones)

CIRCA 1835 SPRAGUE-CHADWICK HOUSE, 307 RANDOLPH AVENUE (FEDERAL PERIOD)

In 1970 the Sprague-Chadwick House had been long empty and in disrepair and was known to local children as "the haunted house". Its owner offered to donate its bricks to the proposed Constitution Hall Village since it was assumed the late-Federal Period house was of no value. The front porch was rotted and collapsed, windows were broken, paint peeled, etc.

But, as is usually the case, the derelict appearance was just easily fixed cosmetics and the house was extremely sound and intact. The rotted porch was an inappropriate late-Victorian addition and was well-gone. The house was purchased for land-value alone, since the previous owner apparently assumed the house was not worth anything. The house was then nicely renovated for professional offices and the new owner obtained beautiful and prestigious historic offices for only about two-thirds the cost of a modern-design new ordinary office building of the same floor area.

125 Oct 96  
46.40

Leads - 5" = S. blinds  
 (5") = E. blinds

$\frac{1}{4}$ " blades



Blinds at

c. 1832 Chadwick Lane

N.W. Corner Lincoln & Randolph

N.W. Ct.

(Originally were on c. 1820 house  
 on west side of west Clinton,  
 demolished in 1960's "Urban Renewal"  
 program)

Measured 18 Jan. 1990 H. Jones

