



"bungalow"
 porch is
 c. 1920's
 addn.
 (NO porch
 originally)

H
 H
 → N
 H. Jones
 on
 porch



two rooms (one down, one up)
 Federal Period house (date unknown)
 Barrister Alley, Huntsville AL.
 (Donat. Sept. 1979)

PHOTOS p. 1-4 Ralph Allen, J & H Arch, + HJ, 1977

→ V.C.
 ADD



→ ONE
 brick
 course
 projecting
 (2 is
 usual
 in Fed.)



BARRISTER
 ALLEY (FED.)

E. CLAIM

1 of 15

→ N

→ N



Note N.E. corner - bd. turned to front (usual) but N.W. bd. is turned to side (quirk)

← Vic. west wing

20th c. added porch covers most of entry transom (see below)

No porch originally = Fed. period practice in many hbs.

NOTE casual spacing of clapbs = TYPICAL of Fed. period (spacing varies ± 75%)

NORTH FRONT

transom head

original banded jamb

20th c. infill for smaller door



transom sill

N. FRONT ENTRY



ORIG. ENTRY (2 SINGLE PH) DOORS IN ENTRY (62. REV. TYPE)

ORIG. DOOR OPNG.



hinge-mortise probably for blende



20th c.
porches

N ←

VIC. W. WING

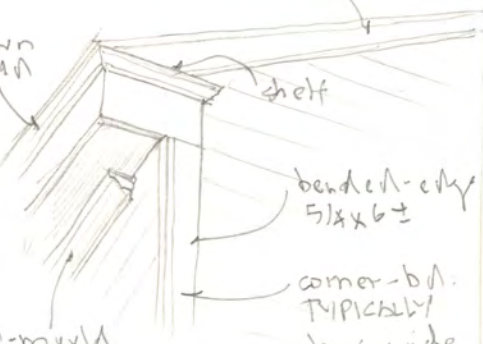


N ←

missing at
drip-eaves,
SW at
west return

tapered, bottom-banded
5/4 rake-fascia (top. fen)

← crown
mould



banded-edge
5 1/2 x 6 ±

corner-bd.
TYPICALLY
has wide
side to
box-entries

bed-mould
stops ± 1' from
corner, meters

← returns to wall

ONE OF 3 MOST-TYPICAL
FED. PERIOD CORNICE ENDS

now lost in
12 units in
except 1977
reprod. in
Al. Const. Vol.
(Const. 124)

Note hole in
soffit a few
round downspout
from hidden
gutter

Note narrow
sash of door
trim (is just
the frame edge,
w/ bead)

NOTE casual spacing of clapbd (TYPICAL FED.)

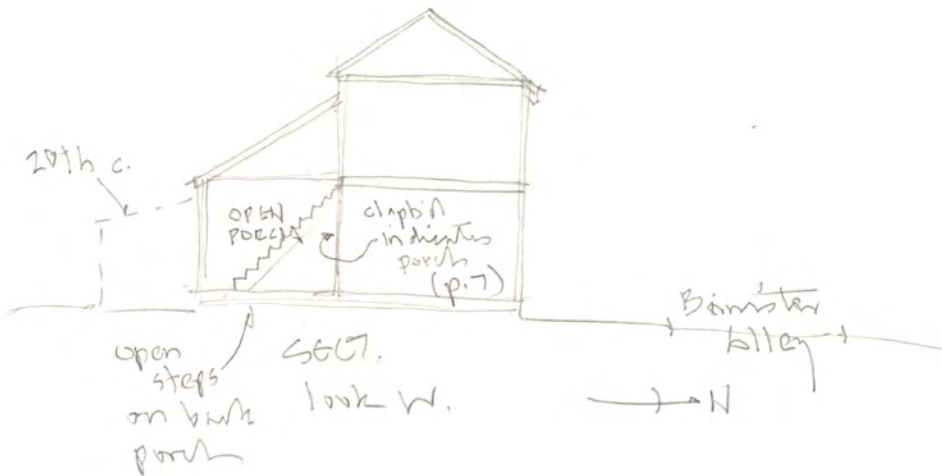


N
↑



E. Side
 originally an
 open porch

S. Side
 (shed was orig. an open porch,
 here enclosed, plus later s. shed add.)





113



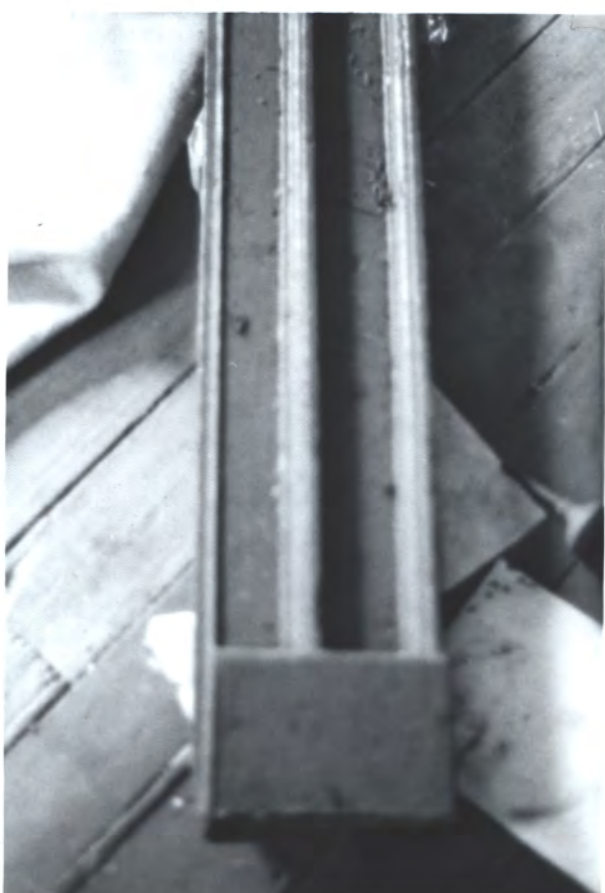
114

Fl. 2 window (Fed. style)



113

C.I. cam-action blind hinge at
Fl. 2 front window

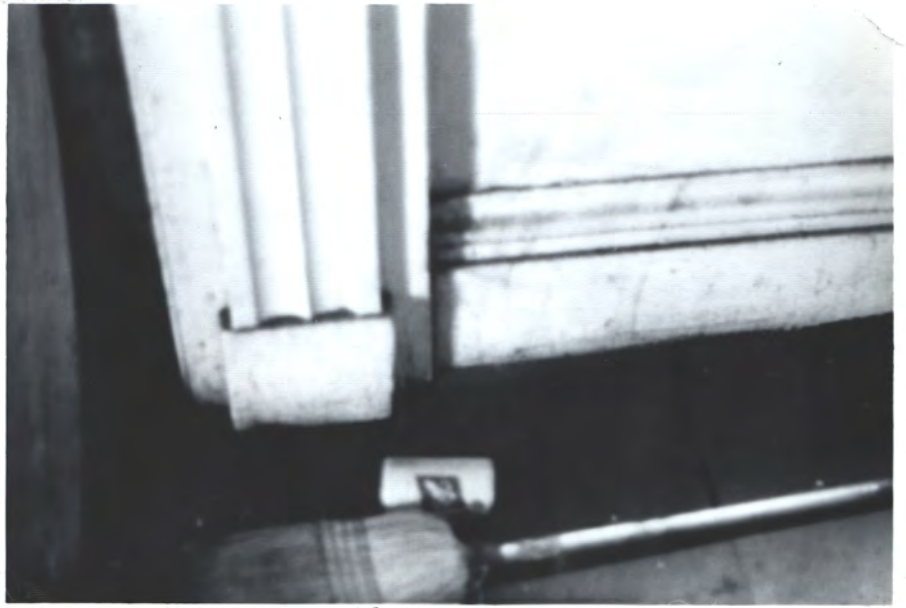


115

50615



H ←



← N

Fl. 1 Mantel (c. 1850's Italianate style)
See "White" has on Enosis for similar type



← N



← N

Stair, fl. 1 S. rm. (originally an open porch)

Perhaps needed glasses at this point
— many unfocused photos

STAIR ↗



19

← N

↪ bend

↪ stat. wood trim

STAIR

Vic. cell. →
620



18

← N



17

← N

Clayton indicates that this was an open porch originally



111

← N

Fl. | N. Rm., E. W. W. M.
(Vic 2/240h)

7/15



bolt →
may be
old.

Vic →
lock

110

Door makes stair to dos →
- Bolt looks original



← trace of
orig. rimlock

112

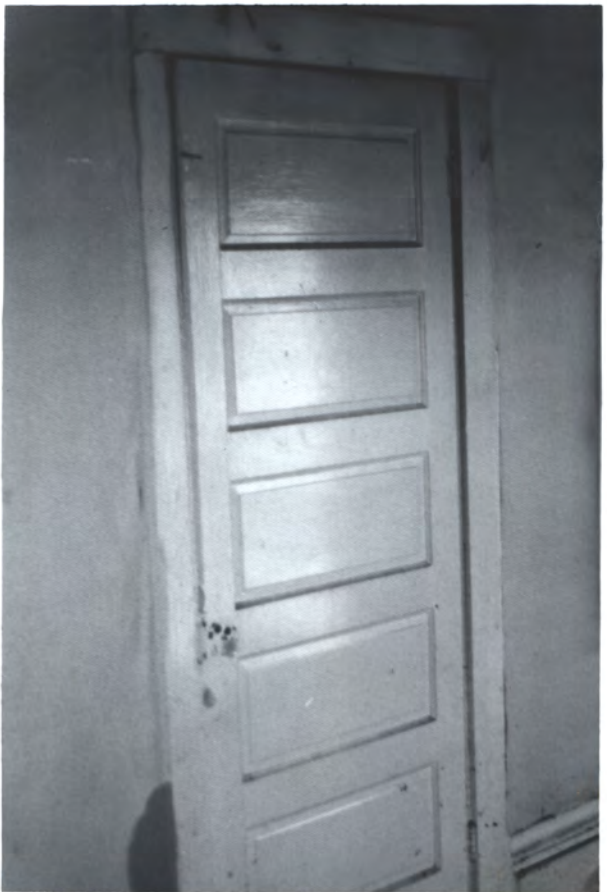
Door to fl. 1 S. Rm. from fl. 1 N. Rm.



↖ N

114

Latex flue in back porch (now enclosed)



112

View c. 1920's door to Vic. west wing
from fl. 1 N. Rm

8

Fed. Period
 Brimster Alley
 A-1 -
 PHOTOS
 p. 9-14 =
 1979 by
 HP Jones Falk
 (Sept 79) after
 a center.
 clumsily tried
 to raise the her
 w/o proper
 strapping &
 supports.
 Owner then
 demol. the her.



Vic. W. wing
 removed

EN

See
 sketch
 on p. 3



H
 ↓

9 ~ 15

banded
 ± 5/4 x 4

N.
 FRONT
 ENTRY

Fed deck op. x Fed Truss x



See p. 2 for
 sketch of por's entry 20th
 20th
 20th
 Fed.



NOTE tapered raking
fascia + casual spacing
of clapboards (typ. Fed.)

H ←

open originally (apparently)



H ←



H ←

NOTE Fed. tapered ↓
bottom - banded raking - fascia

open originally (apparently)



S. 26th
 (originally the shed
 was an open porch)



E. wall clasp studs -
 in Vic. or later.
 Apparently rotted
 & replaced.

West wall

Has banded $\pm 5/4 \times 4$
 corner - bd.



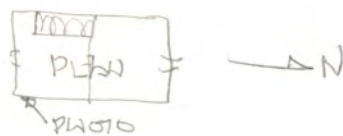
NE corner - NOTE
 Varying lag
 of clasp - typical of Fed. Period

SW corner of 2 story part





N.W. corner of pl.



S.E. corner of beams (E.W.M)
Hem. joist confirms S. beams
is part of orig. Fed. period structure (part)

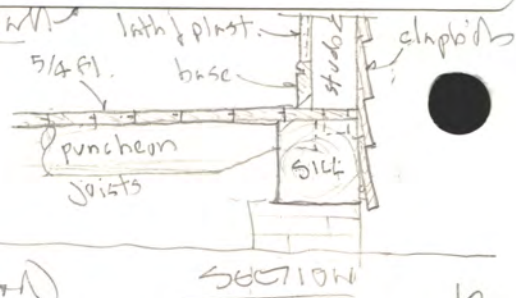


N.W.M., N.W. corner - by the (note SASHAW marks on wall)



Hem. fl. joist at N.W.M.

handspint
white oak
lath
(typ. 1800-1850's)



N. JAMB

± 5/4 x 6 T & G fl.
(no sub fl.)
= typical 1800-1860

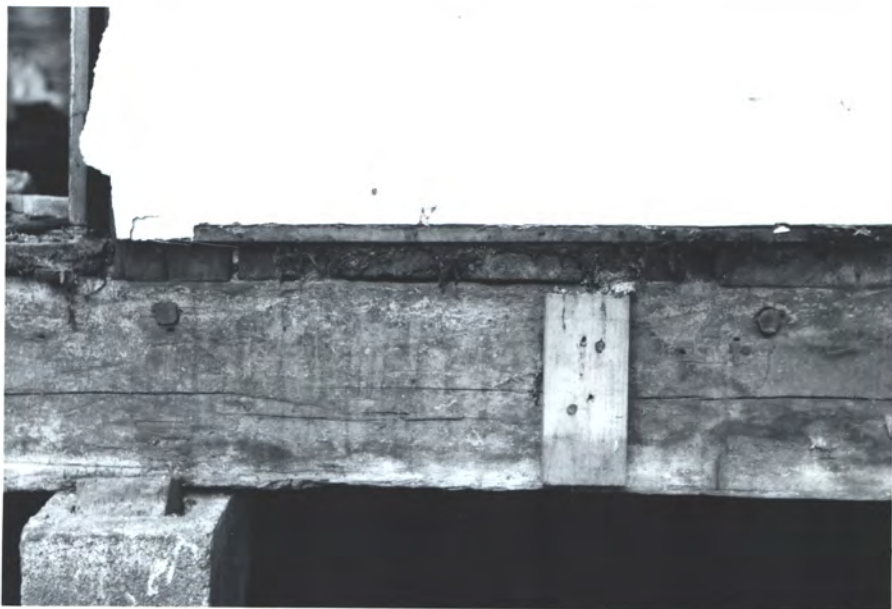
N →



FL. at west wall
at later door

(see p. 10
for loc.)

S. Jamb →



lath & plaster

± 6 x 5/4 banded base
(TIP. FED.)

± 5/4 x 6 T & G

punchen
joists

stud
tenons

SILL

pegs to
secure
studs

NOTE
pit-saw
marks

SECT.

mod.
corr. blk

punchen (log) joists →
under N. rm.

(rest. pit-saw of beam
joists under S. limits)

5/4 fl.

punchen
joist

N →



14-215

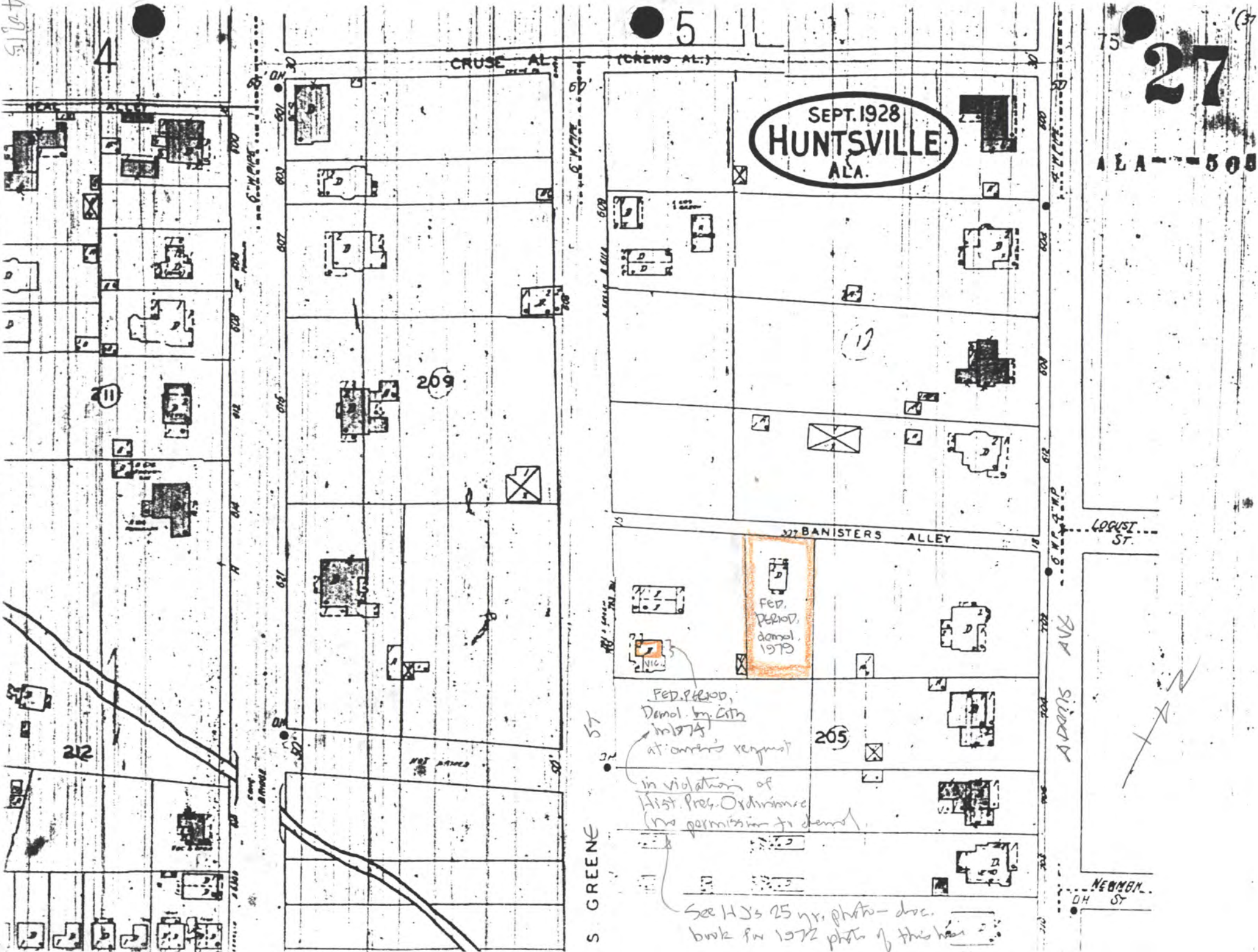
4

5

75

27

ALA - 508



SEPT. 1928
HUNTSVILLE
 ALA.

209

212

265

Fed. Period,
 demol. 1979

Fed. Period,
 Demol. by City
 in 1974
 at owner's request

in violation of
 Hist. Pres. Ordinance
 (no permission to demol.)

See HJ's 25 yr. photo - doc.
 book for 1972 photo of this house

AVOID SLEEPS
 AVENUE

LOQUIST ST.

NEWBORN ST.

S GREENE

57

37

15015



restored view of orig. early 1800's hse

ADDN (1979)

FEDERAL PERIOD TOWNHOUSE -
 BANXISTER ALLEY - TWICKENHAM HISTORIC DISTRICT
 RESTORATION & ADDITIONS

12 JULY 1979 - JONES & HERRIN, ARCHITECTS, A.I.A. - H.P. JONES

P.S. - demol. hse was clumsily reconstructed w/o arch. detailing or inspection "somewhat" like this - H Jones
 (hse collapsed when contr. tried to raise it w/o proper bracing & ties)