

f N. Porte-Cochere gone by c. 1990. Removed w/o permission of Hist Commission



403 Franklin St. - Huntsville, AL
c 1891 photos (1980 copies) when house was new, apparently

H.D. Broedring, Arch

403
FRANKLIN ST
1891



PZ

Entry bottom landing had been modified prior to c.1990. Landing eliminated & stair runs straight down to fl. Poor modif.

403 Franklin St. - Huntsville, AL - copies 1980
H.D. Breeding, original arch.
photos appear to be when house was new in c.1891



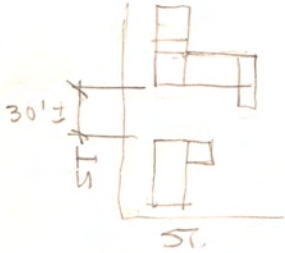
Pof2

S.W. Parlor

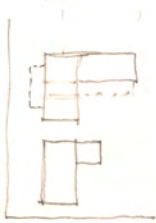
→ 11

ca. 1820 Bradley Hse
405 Franklin St.

Remodeled to this form
& shifted south about 20'
prior to 1894 Sanborn map.



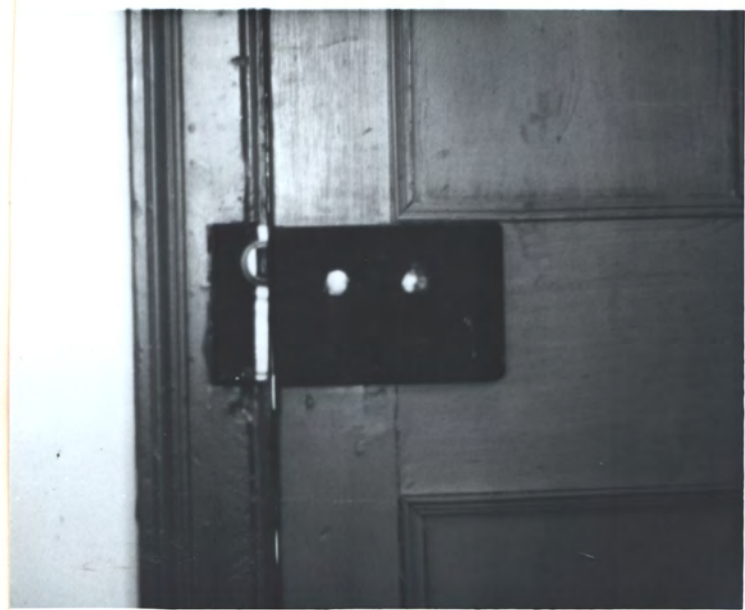
1861 MAP



1894 MAP
(SAN BORN)

AUG • 71





Fad. door & lock in rear wing 1st fl. room



exposed
terms
+ pegs →

← kenhole
cover

cast iron
hinge →

