

The Ford - Countess Home
Countess Lane

This lovely old house had a beautiful setting and the winding drive gives you a good view as you approach it.

This house differs from most of the houses of this era in that it does not have a central hall nor a central front door. There are two doors across the front, giving it somewhat the appearance of the "duplex" of a later time. ~~The two rooms across the front cannot be entered except by going outside or mounting a few steps to a landing and going down a couple of steps into the other room.~~ This ^A same stairway also goes to the second story into one of the upstairs rooms. *in the room on the right.*

There are two rooms, up and down, ~~in~~ ^{at} the el at the back. The upstairs rooms in the el are reached from steps from one of the downstairs rooms. These rooms do not connect with the upstairs rooms in the front of the house. *(typical of several Madison Co. & Lincoln Co. hse. One side was boys', one girls')*

The house is of handmade brick and the walls are three brick thick. Tradition has it that the brick was made on the place from clay taken from a near-by-field. There is still a big round hollow in one of the fields that gives credence to the story.

The house was built by John Ford about 1822. He was the brother of Hezekiah Ford who was the very first buyer of land in Township 2, in which most of these houses on the tour are located. John Ford died in 1849 and is buried in the family cemetery about a half a mile from the house.

The school house still stands in the yard.

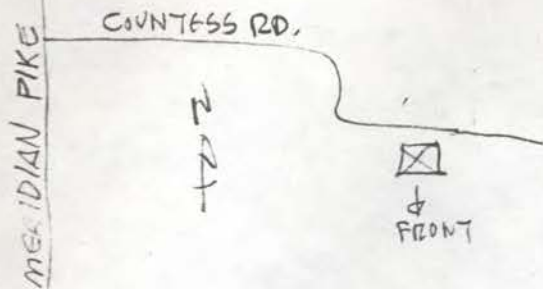
The present porches were not a part of the original house and should be ignored.

by Miss Alice Thomas
c. 1972

FORD-COUNTRESS HSE
 CA. 1822
 (photos = late Ver. at least)



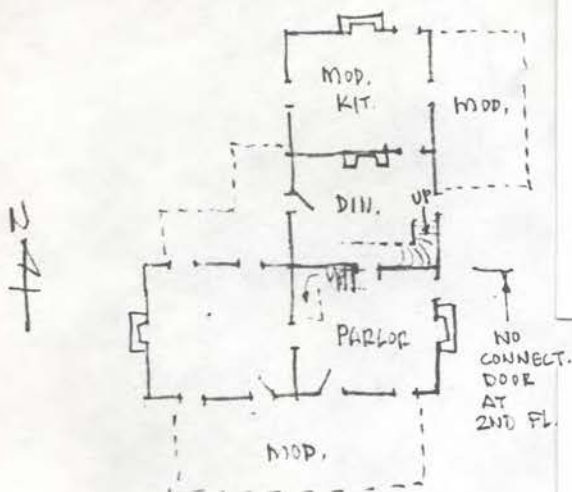
SOUTH FRONT, ADDED PORCH & SHED RM.



HVILE

photos 1982
 (not by HS)

COUNTRESS RD IN REAR
 ↑



PLAN BASED ON PHOTOS &
 MEMORY FROM 1970 VISIT
 (VERIFY)

LOOKING S.E.

13-76



WEST



Ford-Countress
 c. 1822



← THIS INTACT CHIM. CORBELED
CAP PROBABLY IS SAME AS
LOST CAPS

looking S.E.

← NOTE TRACE OF PREVIOUS
PORCH ROOF-RIPPER ENDS
IN BRICK

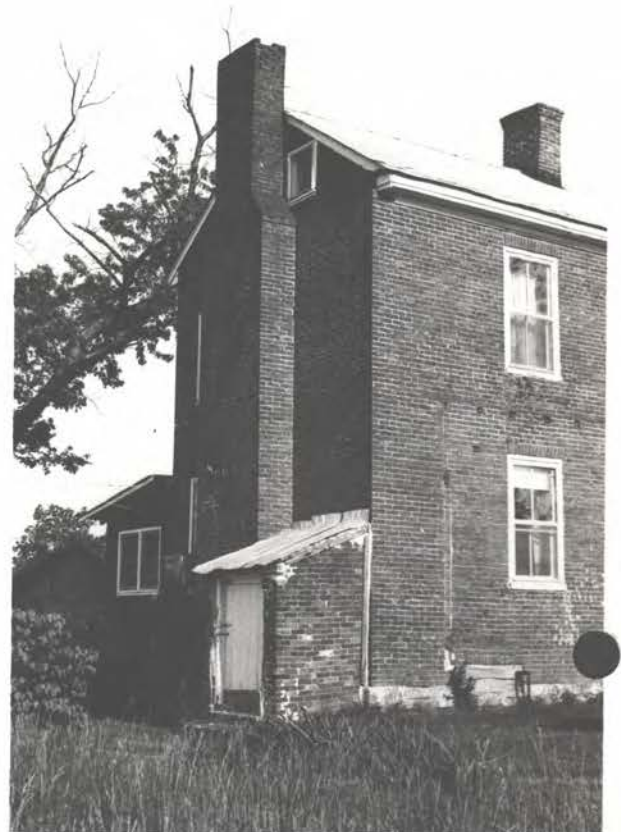
c. 1822
Ford - Countess Hs



← NOTE TRACES OF
PREVIOUS ROOM OR PORCH

looking SSW
(20th. c. Rm)

looking
ESE
(N.E. WING)

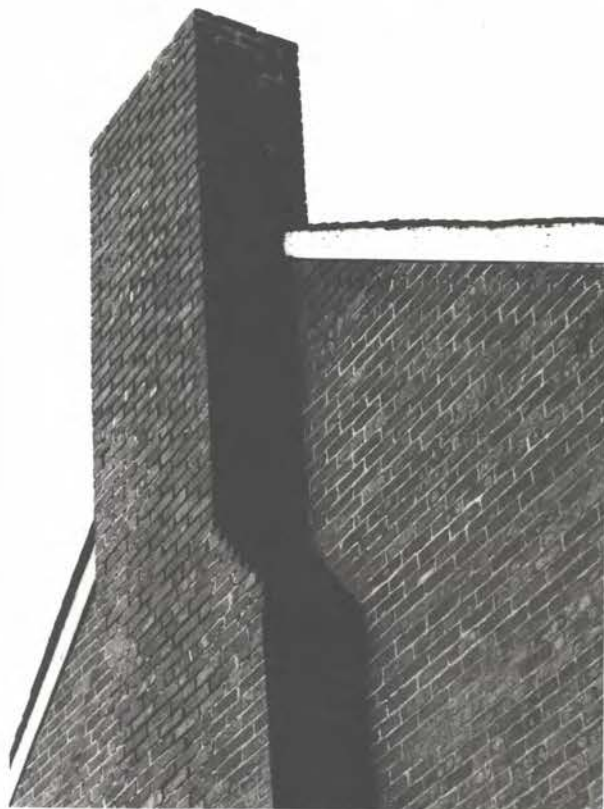




cap-corbels
lost
(see ch. 2)

← IS LOST
AT PG. 5
bottom
photo

COMMON BOND (N.E. WING) RUNNING BOND (N. WALL OF W. WING)



WEST GABLE (note tapered rake-fascia = typical)

ALL RUNNING-BOND (FRONT WING)



9/6
SASH
PROBAB
ORI 6

C. 1822
FORD -
COURTESY
3 of 16





S. FRONT
(ADDED PORCH)



WEST



WEST

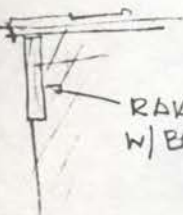
N. GABLE
 (common bond)
 these sashes probably slide
 horizontally (common) →
 2-brick projections
 at chim. shoulder →
 = typical Fed.



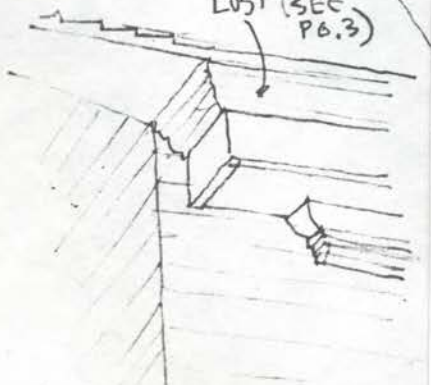
N. GABLE



RAKE - FASCIA SET FLUSH
 W/ BRICK = UNUSUAL (USUALLY LAPS)



MOULD
 LOST (SEE
 PG. 3)



RECONSTRUCTION
 (IS TYPICAL FED. DETAIL,
 LIKE 1815 WOODEN HSE
 + MANY OTHERS)





— SEE SKETCH ON PG. 5
FOR LOST MOULD

S.W. CORNER



VICTORIAN
BACK PORCH



LIMESTONE FOUNDATION
(COMMON TO BE EXPOSED
IN FED. PERIOD)



VIC. SCREENED DOOR - REAR

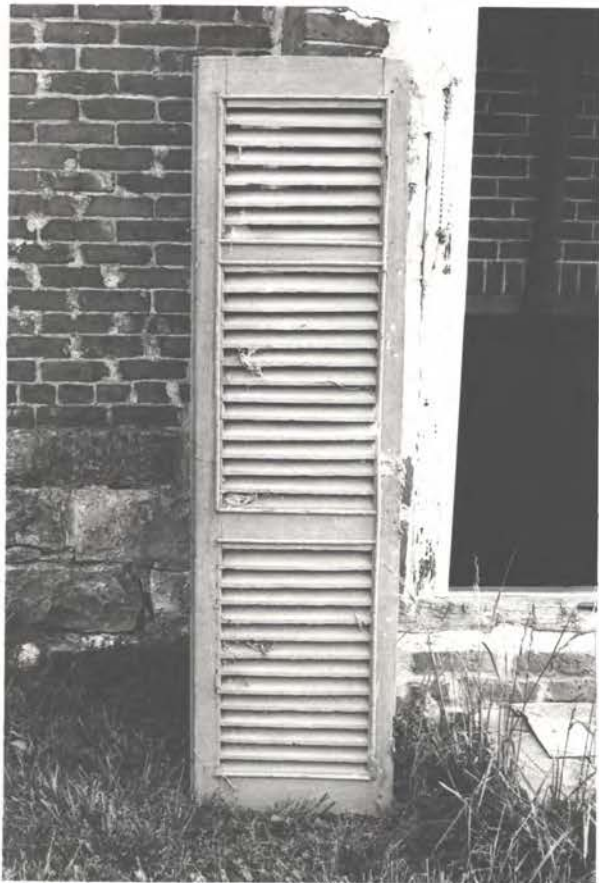


REAR PORCH, W. SIDE OF N.E. WING (VIC. BRACKETS)
NOTE RAFTER-HOLES IN BRICK
NOTE WROUGHT IRON TIE-BAR END ("WASHER")
= COPIED FOR CLAY BLDG., CONST. HALL PARK



c. 1822
FORD-
LOUNTRESS
7 of 6



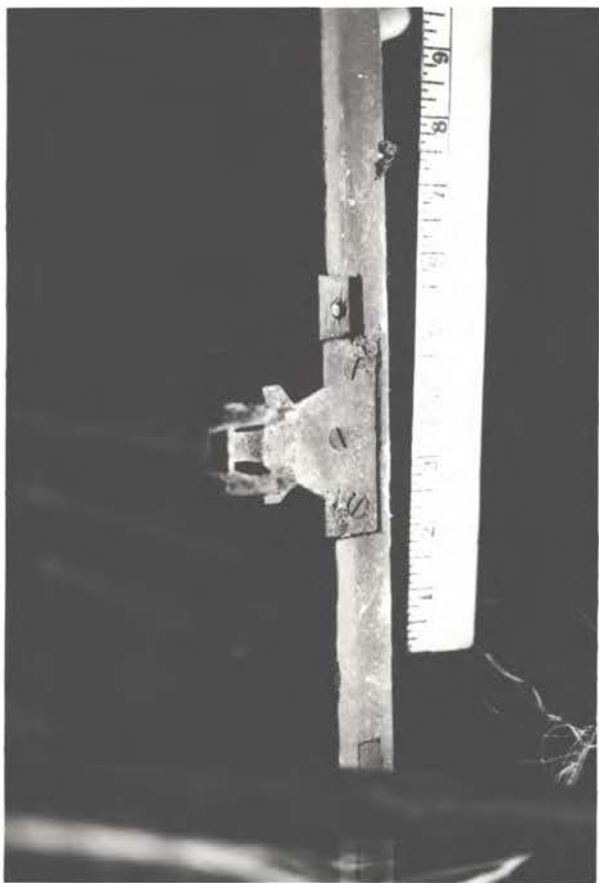


BLIND (WAS IN CELLAR)
(FIXED-BLADES)



MORTISE, TENON
& PEG JT.

CAST-IRON HINGE



AGE ?



AGE?



AGE?

C. 1822 FORD-COUNTRESS
9 of 16



Joists = $\pm 2'$ o.c. = typical



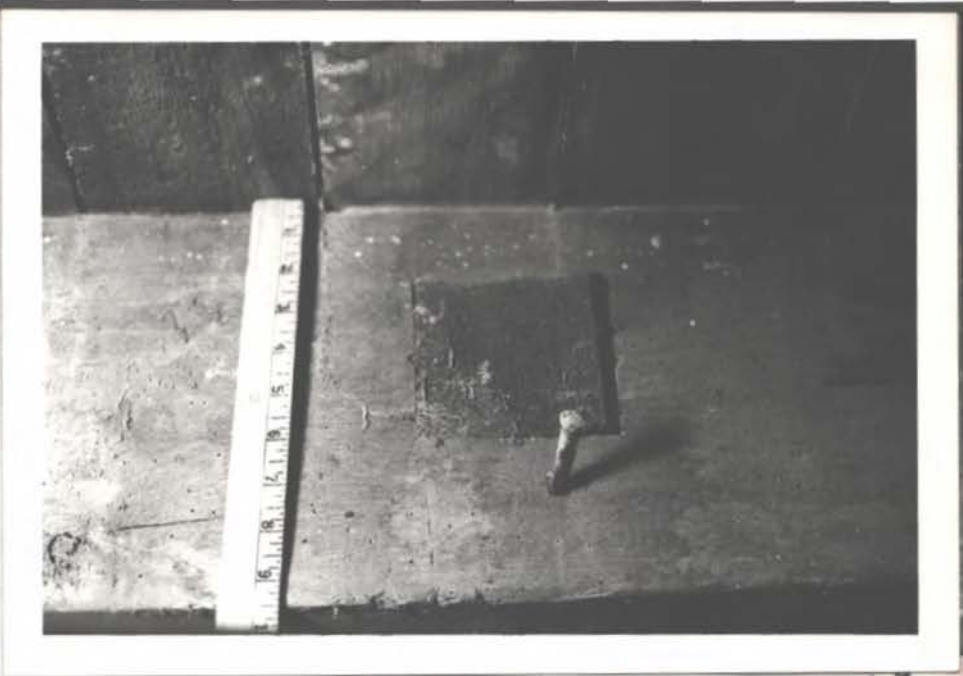
HOUSE: IN CELLAR
HEWN FL. JOISTS.
= JOIST APPEARS
FOOT-ADZED RATHER THAN
AXED (USUAL) - ?



← BOTTOM OF FL. PLANKS

← FNDN

BOTTOM OF
FL. PLANKS →

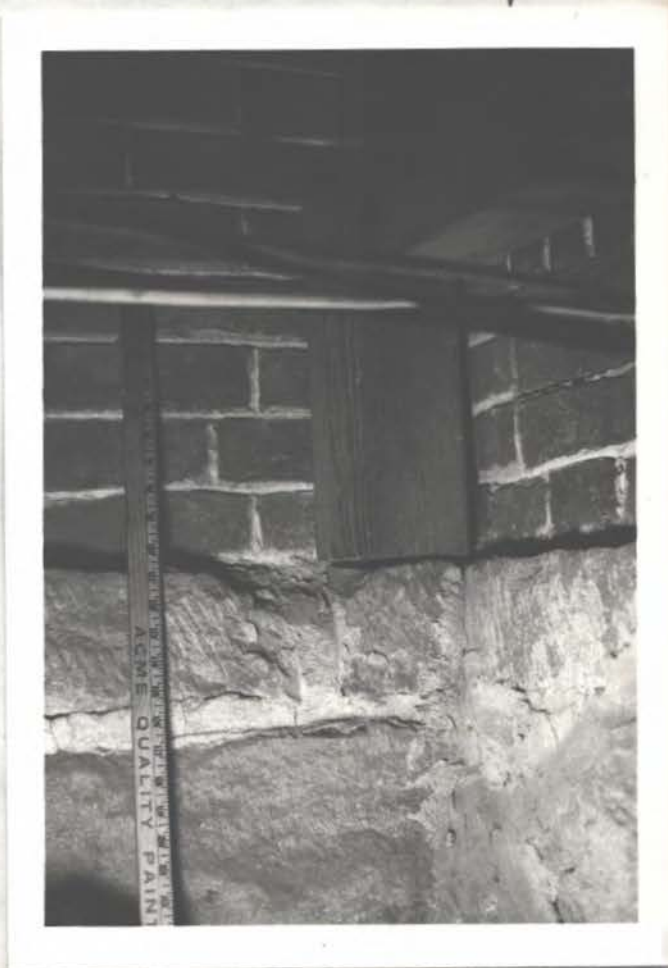


↑
TENON
END

SASH-SAWN
FL. JOIST

↓
?

STONE
FNDN →
IN CELLAR





±6'-4"

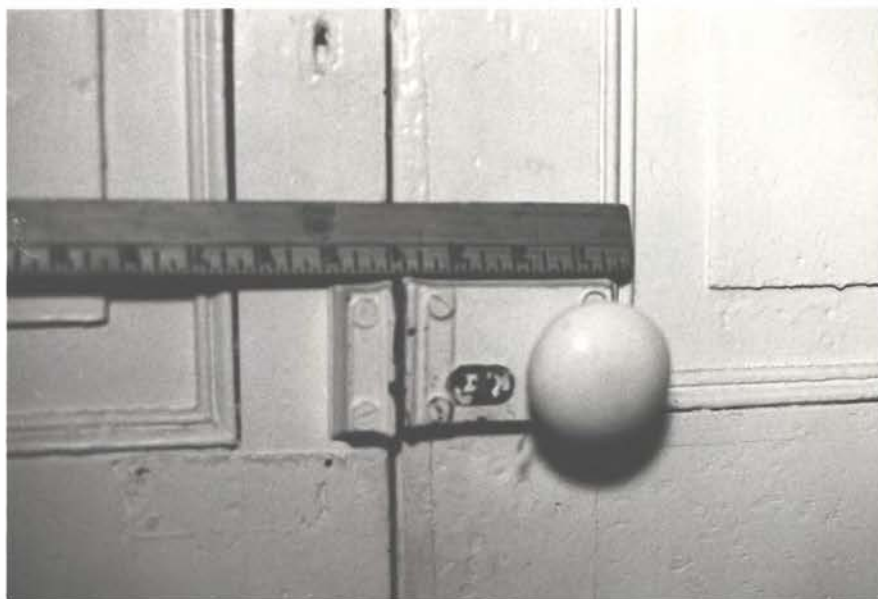
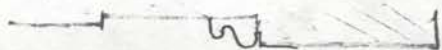
5'-8"



→ not
Chair
rail

EXT.
Gauged (tapered)
brick at
flat arch

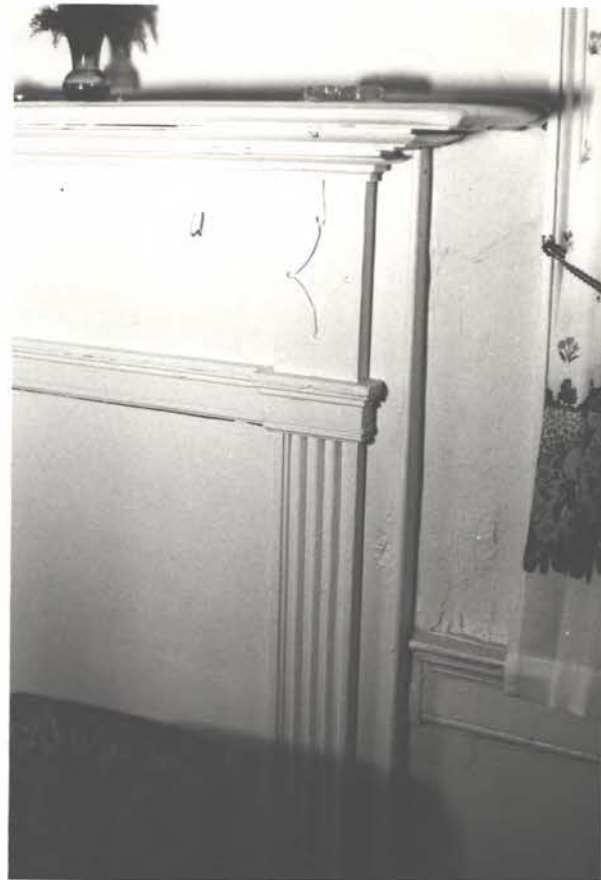
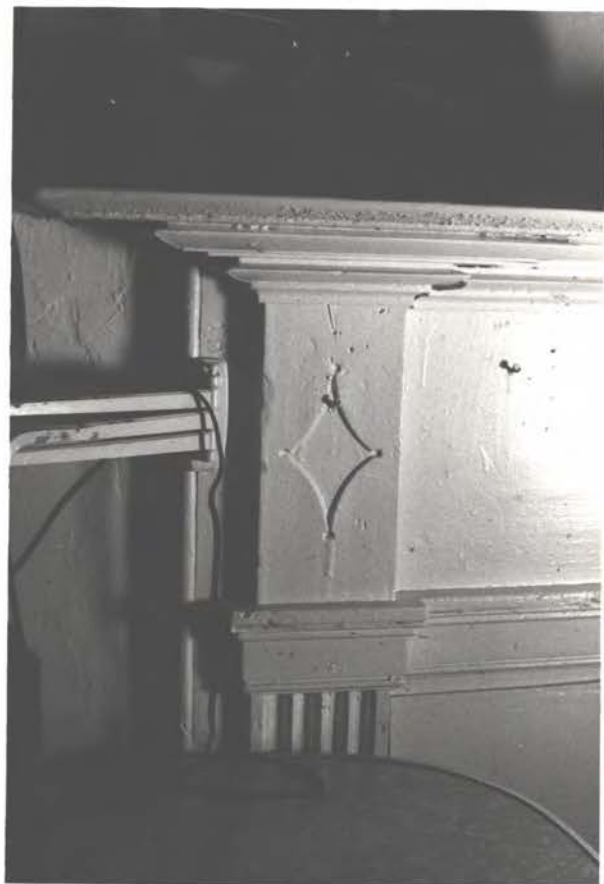
ENTRY DOORS INT.
DOORS APPEAR ORIG., EXCEPT HARDWARE



TRACE OF
FED.
SLIDE-
BOLT

LATE VI. RIMLOCK

MOD.
HANG.
RODS
↙



FED. MANTEL - 1ST FL. N.E. RM }
NOTE FED. CHAIR RAIL →



SEE PG. 3 FOR ORIG. 9/6 SASH



2/2 VIC. SASH REPLACEMENT (S. FRONT)
c.1822 Ford - Countess

SHOT-MOULD ADDED AT BASE
- MOD. LINDLEUMS FL. 13 of 16



1ST FL. S. E. (PARLOR) MANTEL = FED.



BACK STAIR (IN N. E. WING)

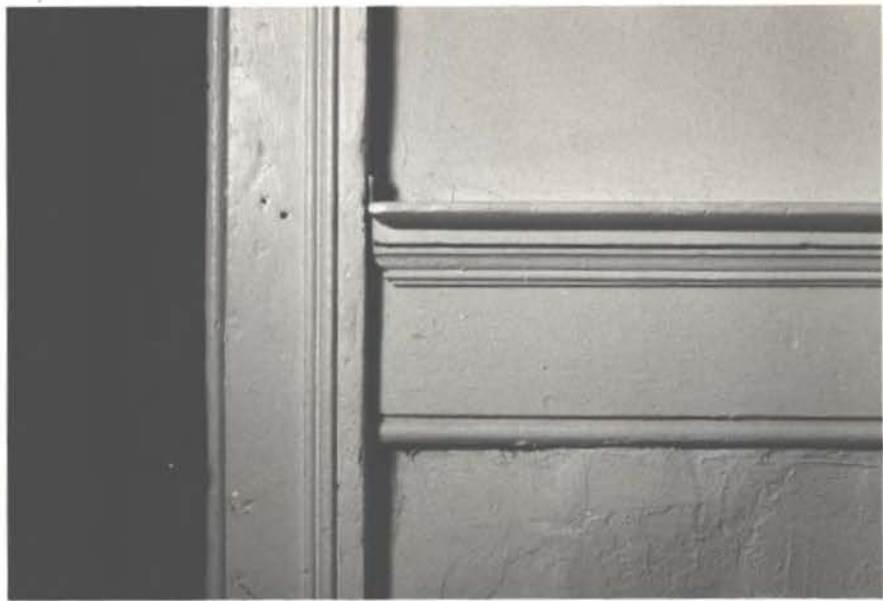
UP



FRONT STAIR

↖ unusual
base





DOOR JAMB

CHAIR RAIL

