

BIRMINGHAM, ALA.  
L&N R.R.  
JAN 21, 1981

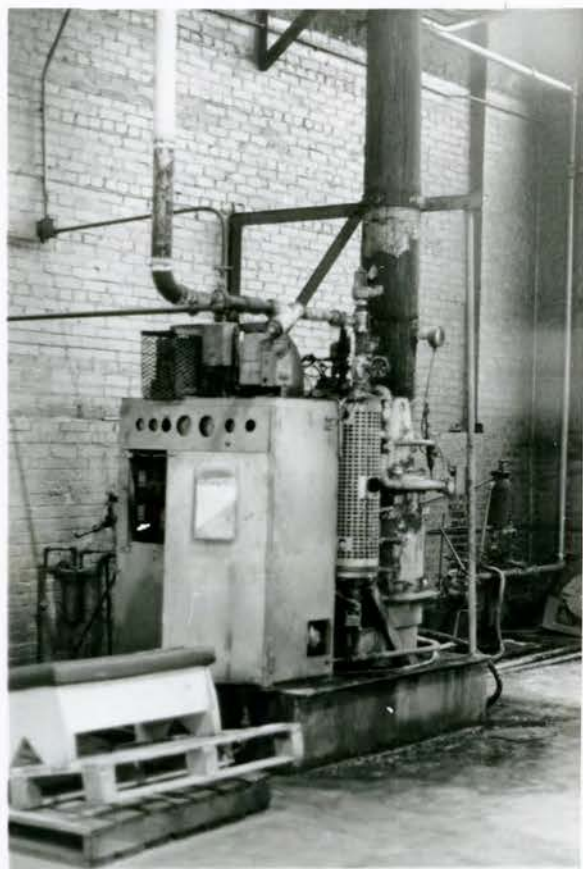


Roof structure  
Details



↑ Column Base

↓ Light fixture



↑ Equipment



JAN 21, 1981  
L&N R.R.  
BIR INCHAM, ALA.



↑ CANOPY ROOF LOOKING EAST

↓ ROOF @ BAGGAGE / EXPRESS BLDG.





↑ TELEGRAPH POLE @ EXPRESS BLDG & CANOPY  
↓ EXPRESS BLDG LOOKING WEST





↑ SOUTH ELEVATION  
↓





↑ SOUTH ELEVATION  
↓





↑  
↓ NORTH ELEVATION





↑  
↓ NORTH ELEVATION







↑ WEST ELEVATION

↓ Express Bldg. East End.





~~Express~~ ~~Baggage~~ Bldg.  
East End



Telegraph





---

Window @ South Elevation



↑ EXPRESS BLDG., EAST ROOM, EAST WALL

↓





↑ EXPRESS BLDG., EAST ROOM , SOUTH WALL

↓





↑ EXPRESS BLDG., EAST ROOM, ~~THE~~ WEST WALL



Window @ East Wall





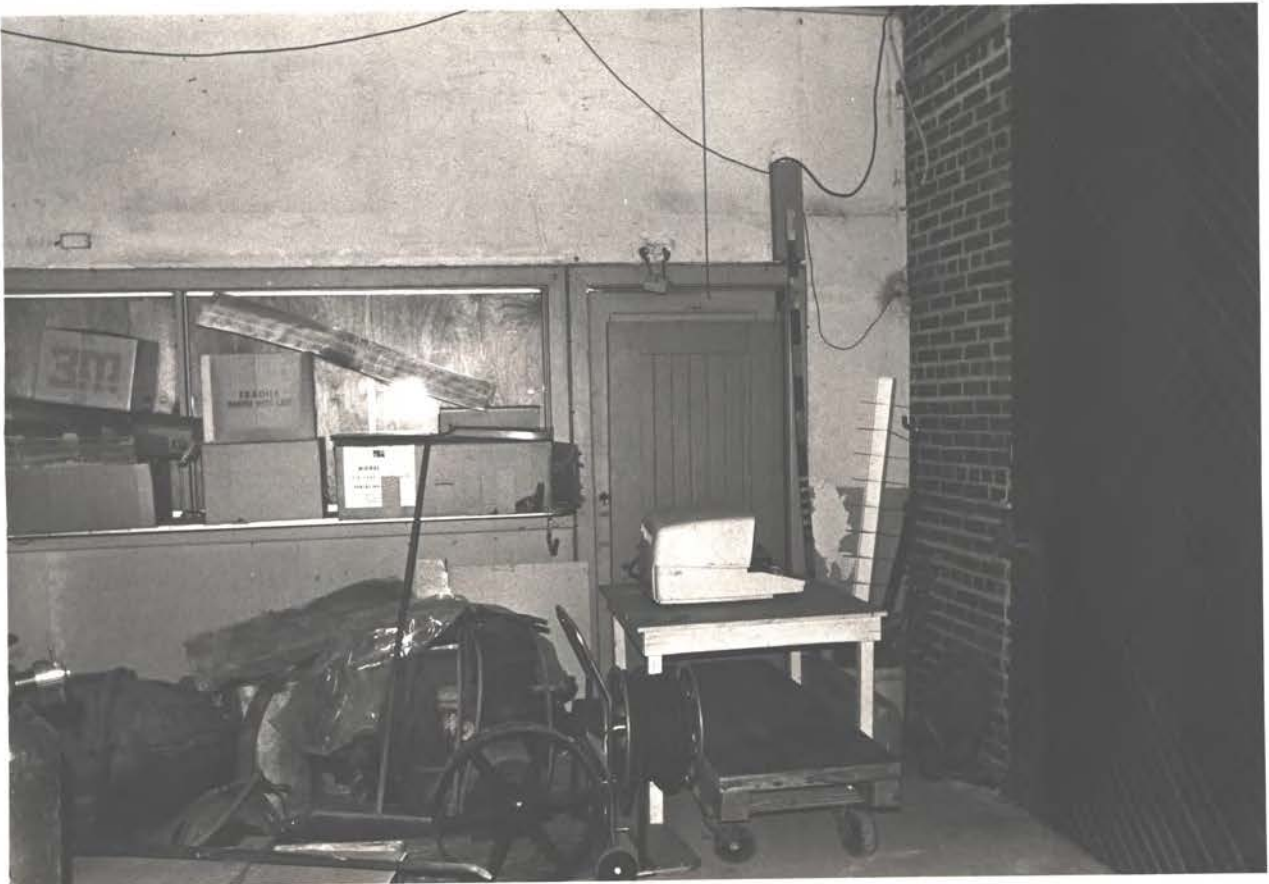
↑ EXPRESS BLDG., EAST ROOM, NORTH WALL

↓





↑ EXPRESS BLDG., WEST ROOM, EAST WALL  
↓







↑ EXPRESS BLDG., WEST ROOM, SOUTH WALL

↓

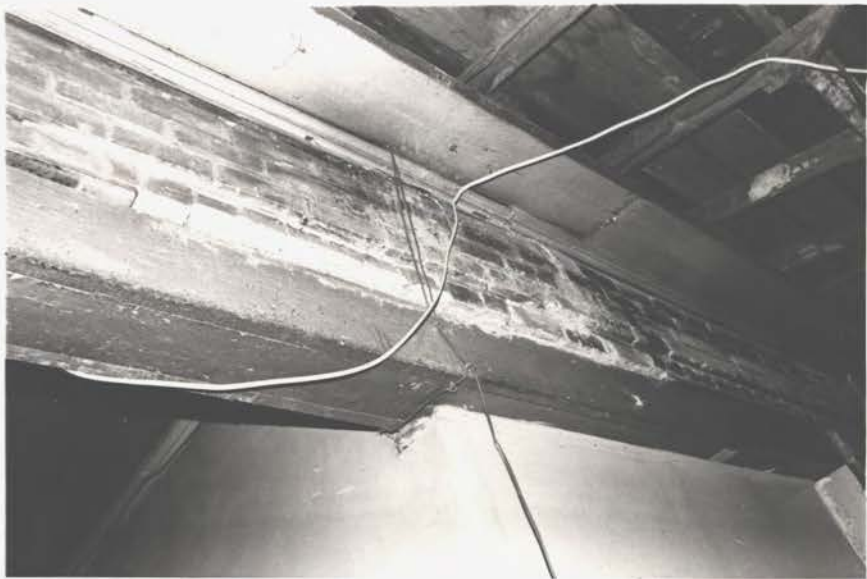


↓ EXPRESS BLDG. , WATER CLOSET , WEST ROOM



Express Bldg.  
West Wall  
Office





Beam @ West  
Wall, Express  
Bldg.

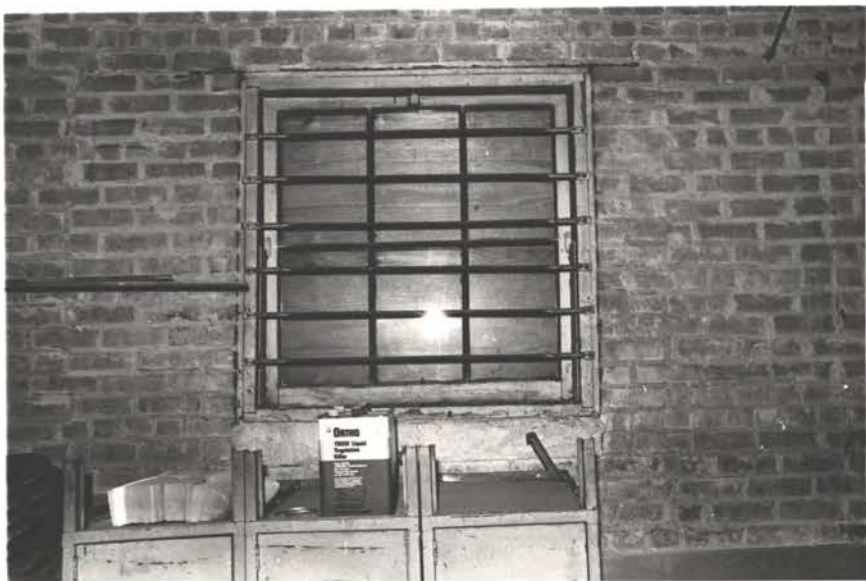


East Ext.  
Wall @ Baggage  
Bldg.

Door # 12  
Express Bldg.



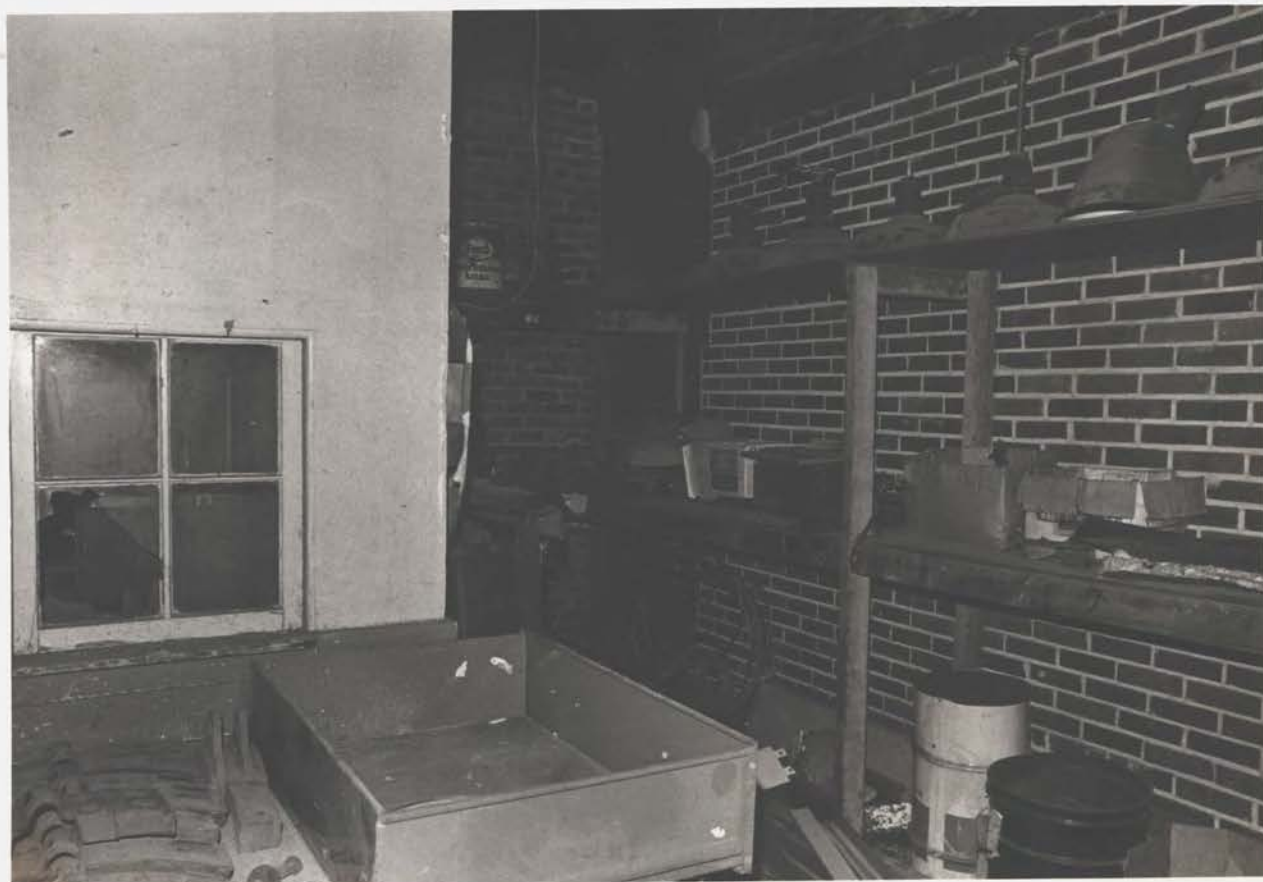
Window





↑ EXPRESS BLDG., WEST ROOM, WEST WALL

↓





↑ EXPRESS BLDG., WEST ROOM, NORTH WALL  
↓





↑ BAGGAGE BLDG. , EAST WALL

↓

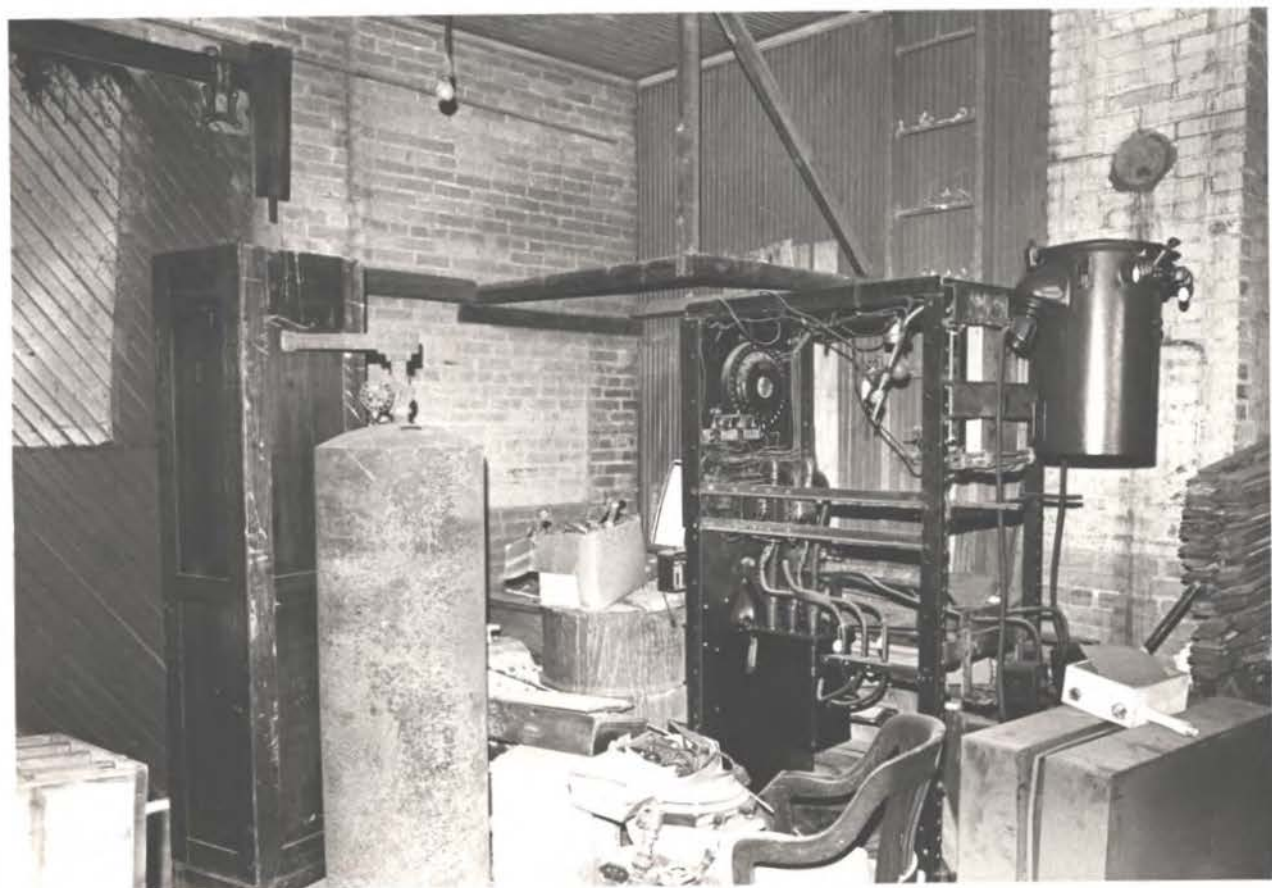






↑ BAGGAGE BLDG., SOUTH WALL

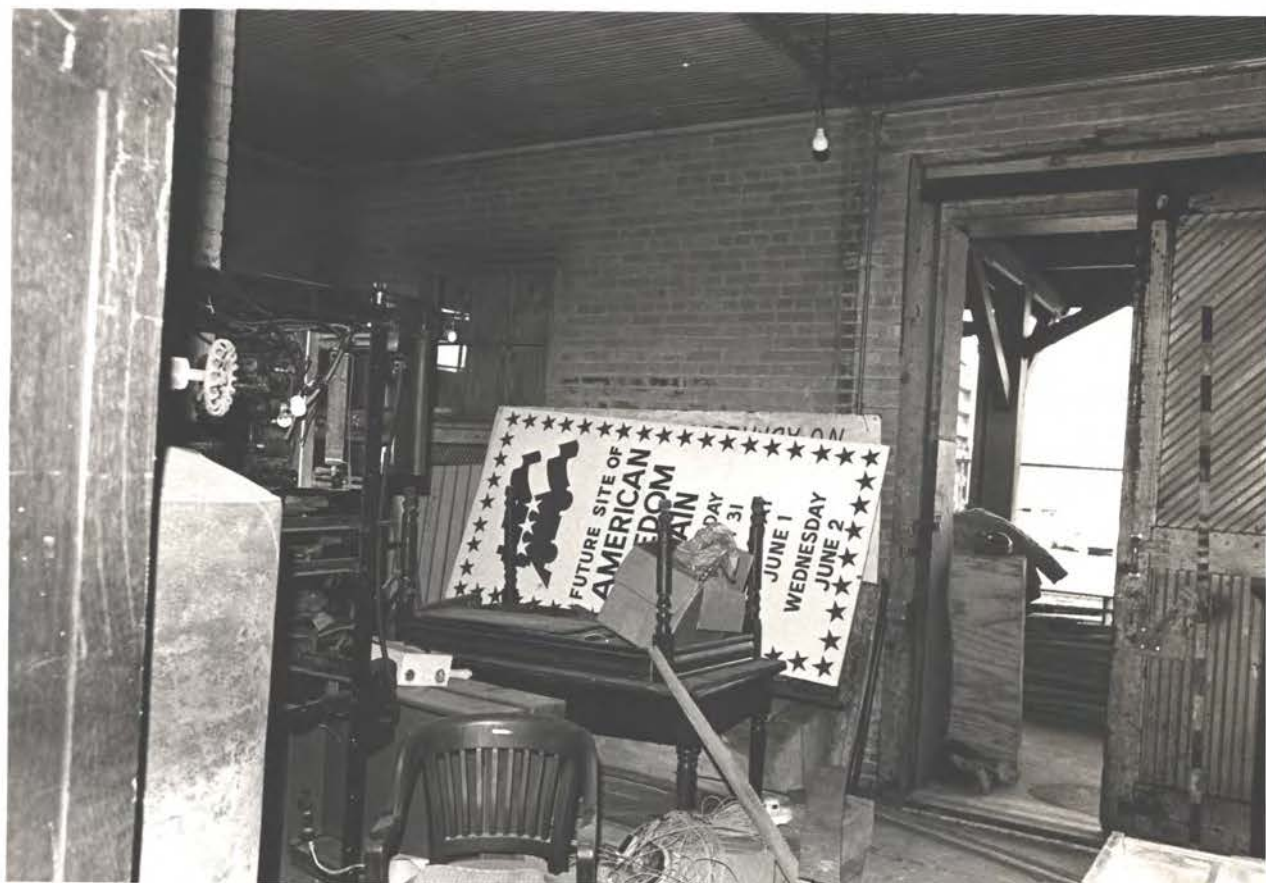
↙ ATTIC ACCESS WEST WALL





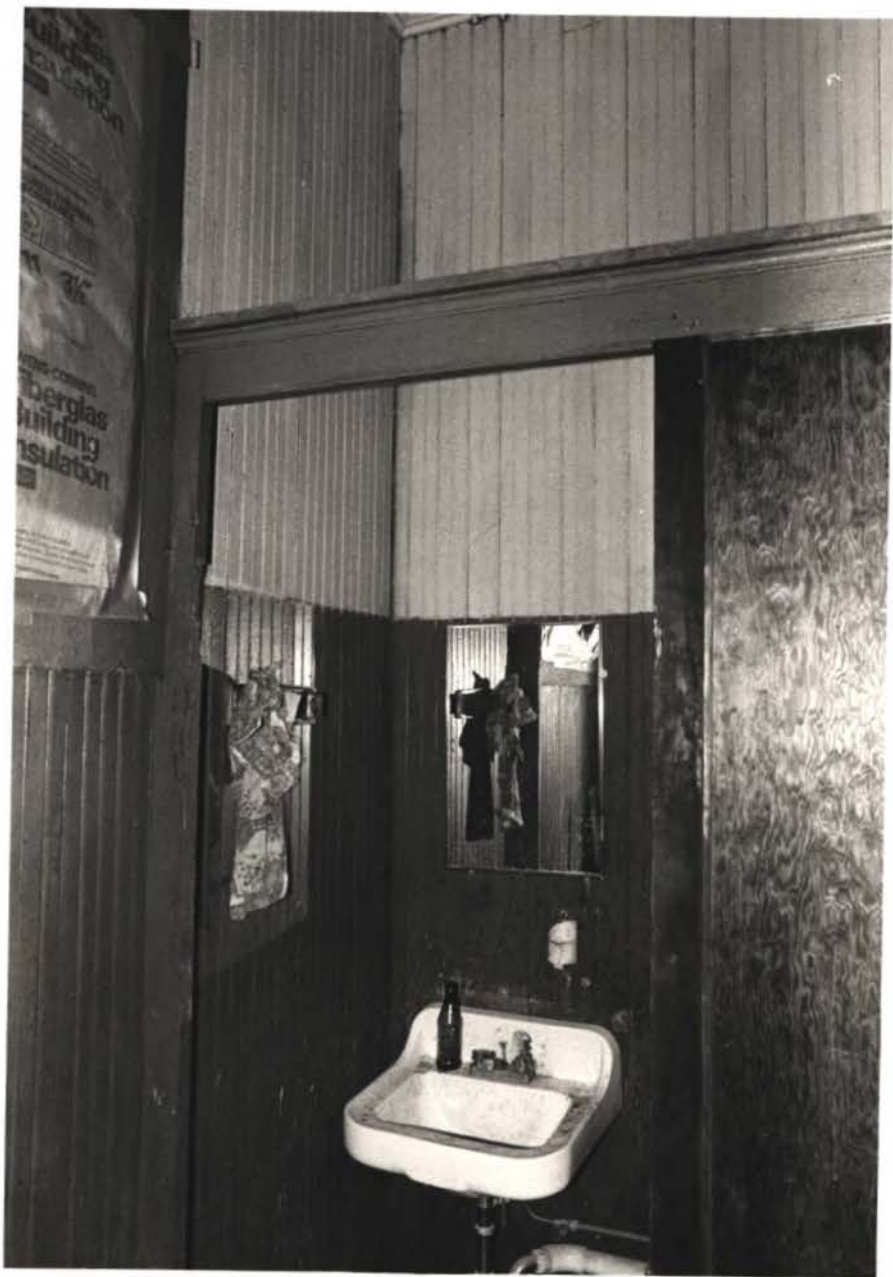
↑ ↓ BAGGAGE BLDG. WEST WALL





↑ BAGGAGE BLDG. , NORTH WALL  
↓





↑ BAGGAGE BLDG., KR., S.W. END.