



Daniel Kashner
 S.D.A., AIA - 1989



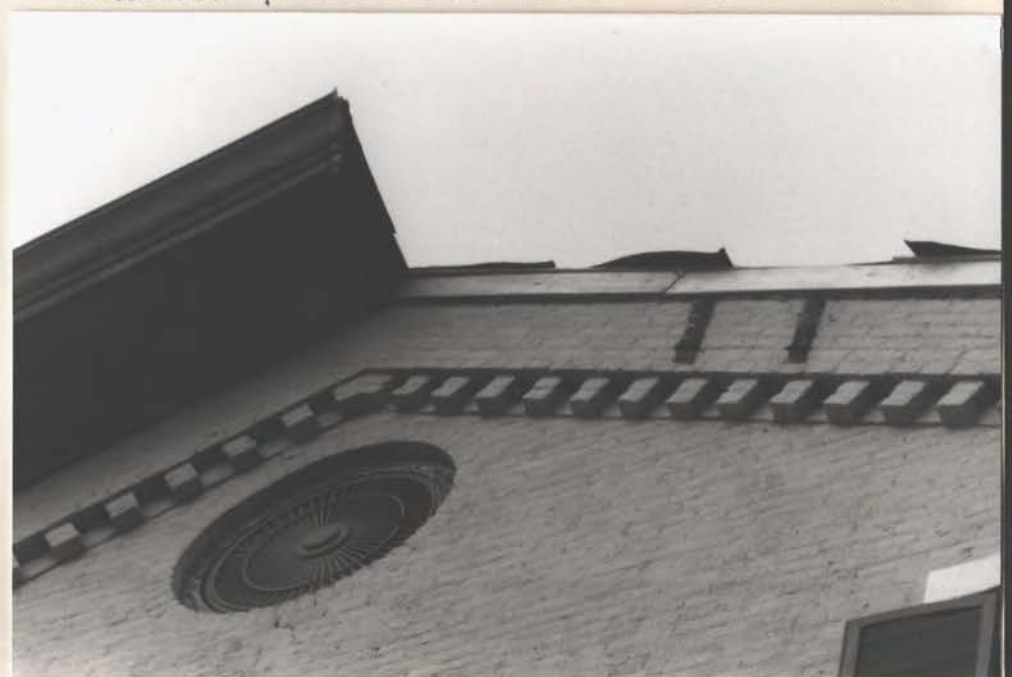
N ← S.W. CORNER
 ROOF PITCHED, WEST CORNICE HALF-BLOWN OFF

N ← CORNICE BLOWN OFF
 CORNICE
 BACKED
 BY WIND
 S.W.
 CORNER

Storm Damage - 1860 Huntsville Depot in June 1989
 H & Jones photos - Jones & Herrin, Architects, AIA.



N ← ROOF PITCH
 SOUTH WALL
 ROOF DENTED



N ← WEST CORNICE
 BLOWN OFF



C



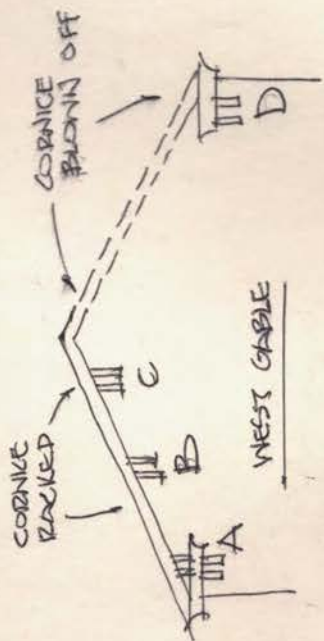
B



A



D





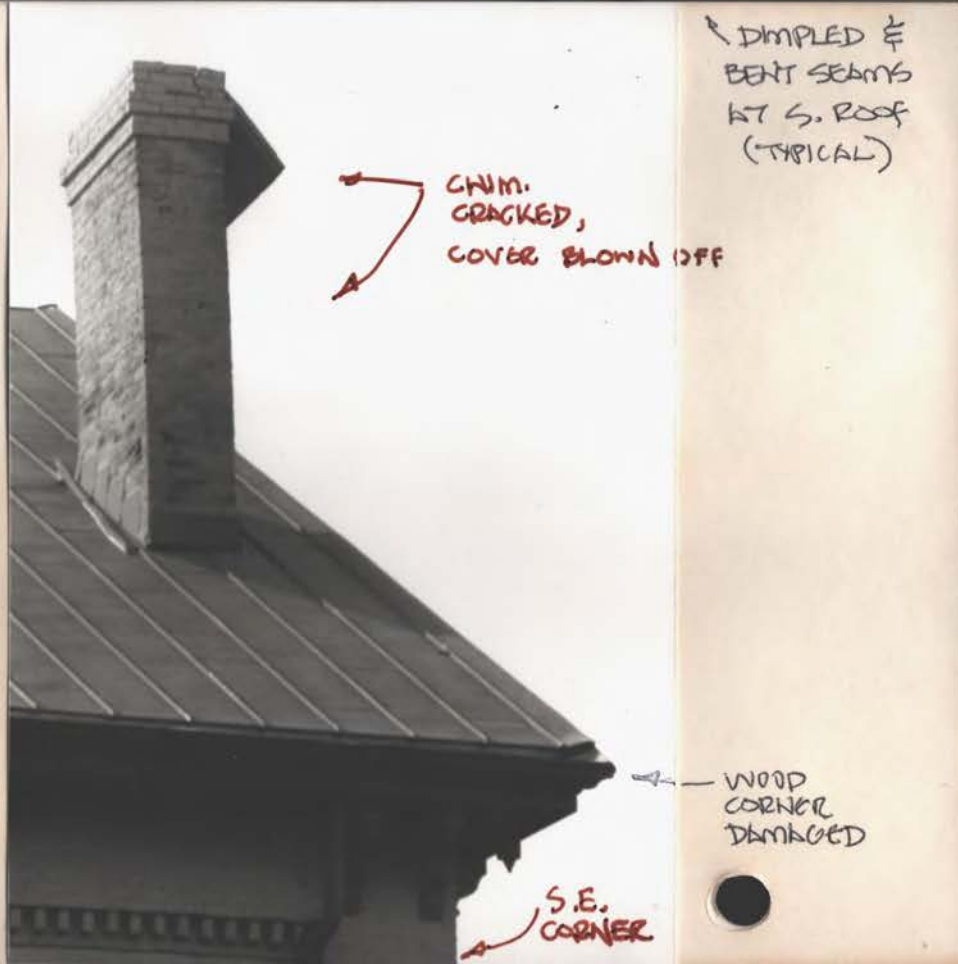
↑ S.W. CORNER

TEMPORARY ROOF PITCH



↑ S. CENTRAL CHIM.
(REBUILT W/ VERT. STL. REINF.
+ CONC. CORE IN 1976)

↪ ALL ROOFING
BENT



↪ DIMPLED &
BENT SEAMS
AT S. ROOF
(TYPICAL)

↪ CHIM.
CRACKED,
COVER BLOWN OFF

↪ WOOD
CORNER
DAMAGED

↪ S.E.
CORNER

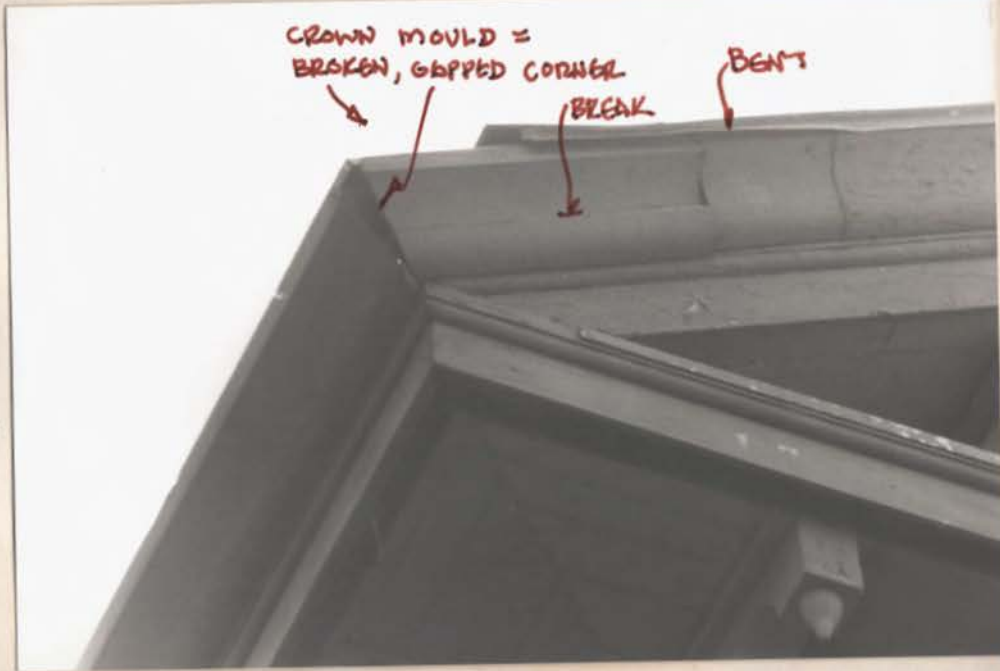
③
L 10 17



1860
1989

CORNICHE
BLOWN
OFF

N ↗ N.W. CORNER ↘



S.E. CORNER

↗ N

1860 HW Dept - June 1989 HS



TEMPORARY ROOF PITCH

→ N.



S.W. CORNER



DENTS

① N →



BALT

S. CENT. CHURCH
REBUILT + REINF.
IN 1977

N →

BENT UP



BENT UP



↑
N.E. CORNER



BENT



BENT UP



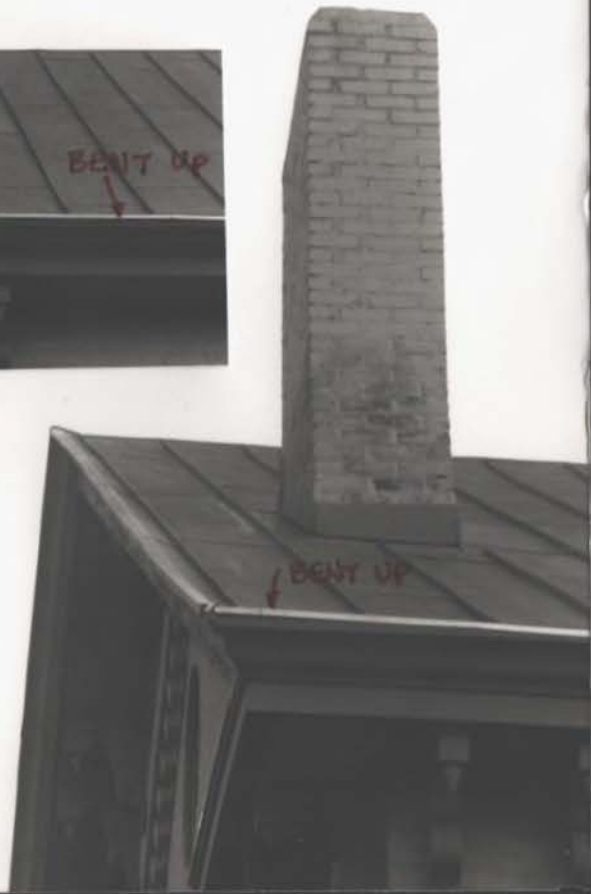
↑
N. CENT. CHIM.



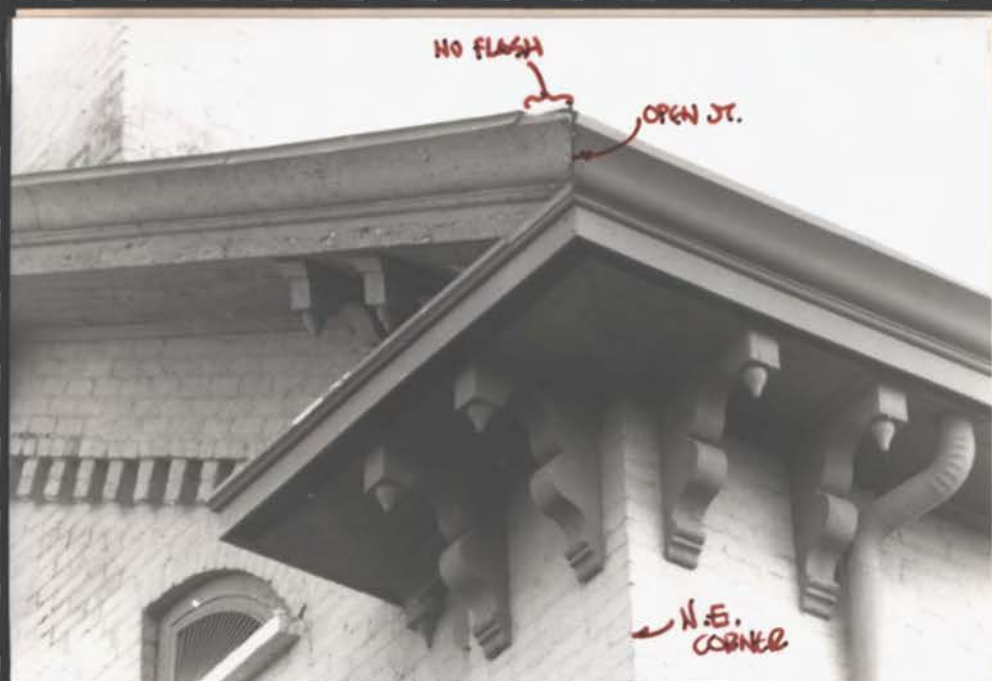
N.E.
CORNER



BENT UP



①





← conduit hanging loose

← 2x4's & ply. = temporary roof patch. Rafter is missing

← siren is loose

← bricks = west gable

← N



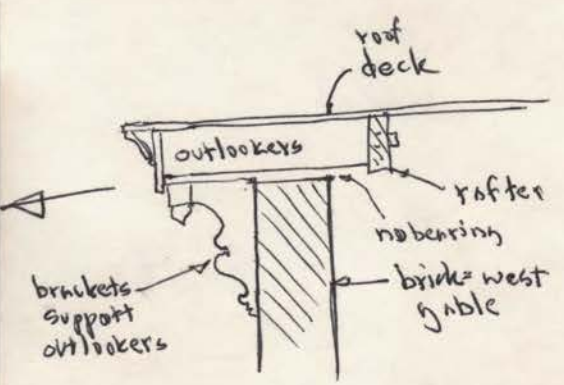
← ply. = roof patch (storms)

← insul. out of place

← N

ASTIC AT
WEST END
(above 3rd fl. rms.)

two pipes broken (vents)



1860 Huntsville Depot
Storm Damage
June 1989
photos W. Jones
1 of 7

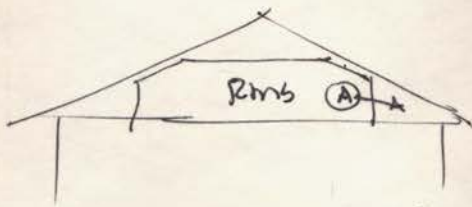
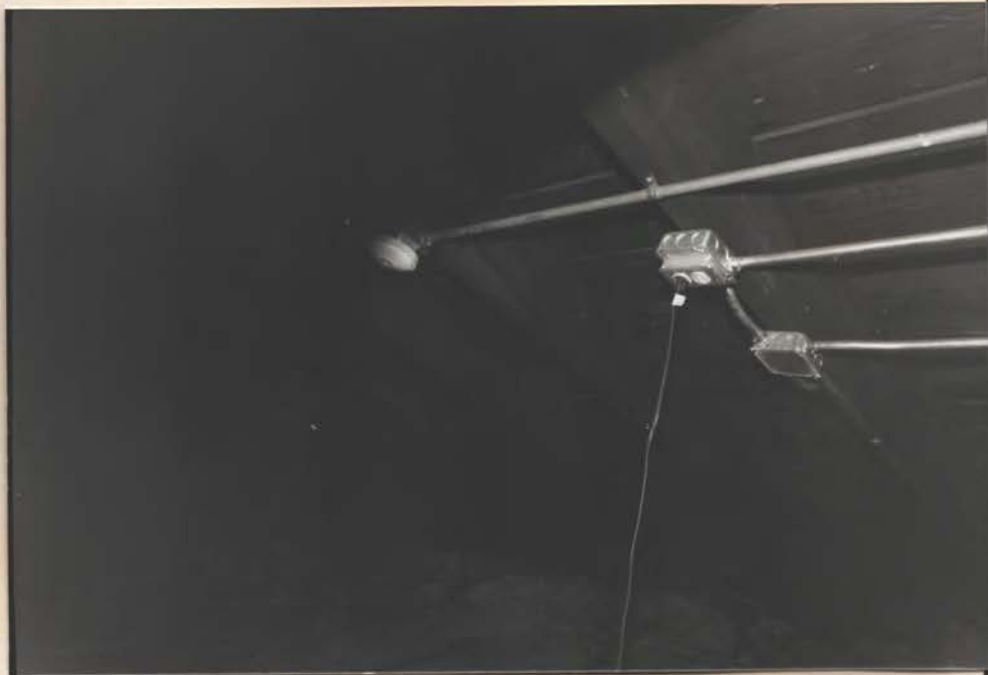
← N

insul. out of place



ATTIC

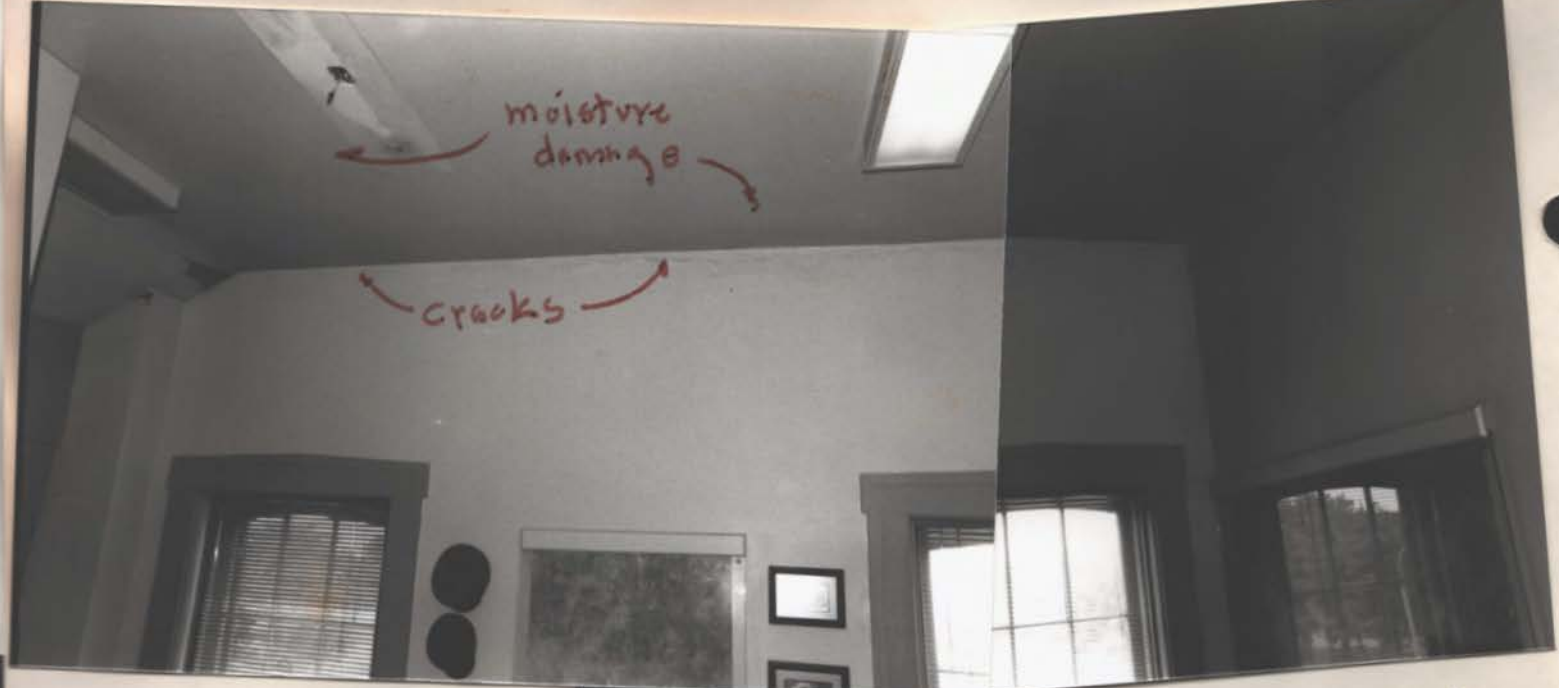
later fan plugged in
w/ the extra cord
(not code)



outer edge
of attic.
Storm damage
photo (A)

N ←





West wall, 3rd fl. S.W. office
→ N

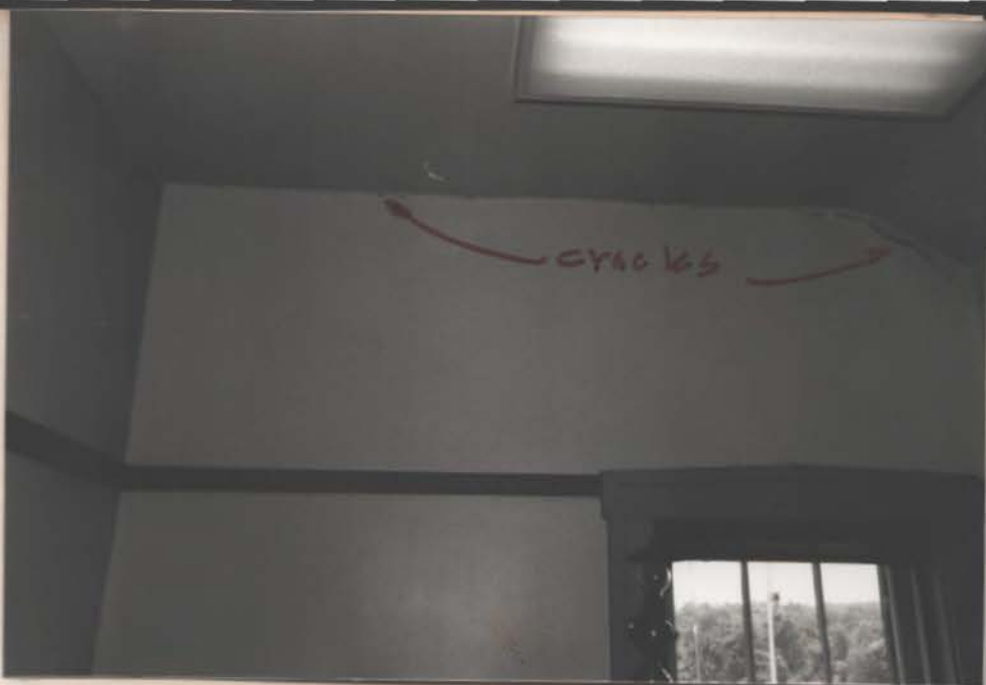
South wall | West wall



cracks + moist: damage

→ N

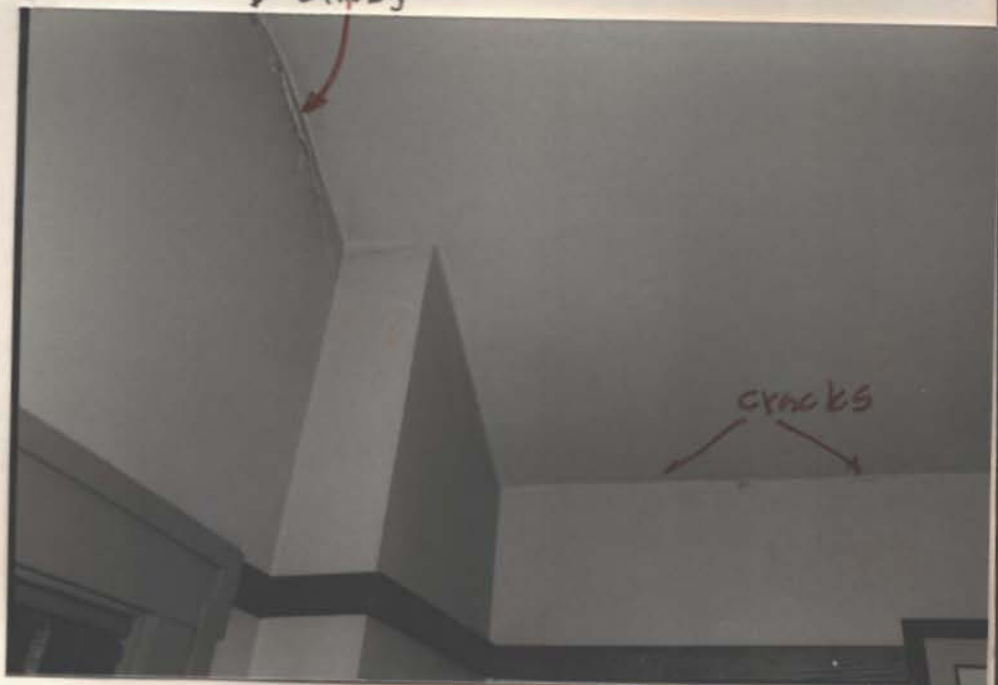
3 of 7



N. W. Office, 3rd fl.
Cracks & possible
moist. damage at
west & north walls



cracks



cracks

2



2ND FL. S.W. OFFICE ← Moist. damage to sash



MOIST. DAMAGE



← S.W. CORNER

N

S.W. STAIR, 3RD FL.

2

raised planter is directly outside, PJ-7 photo

FIRST FL.
S.W. RM.
S.W. CORNER



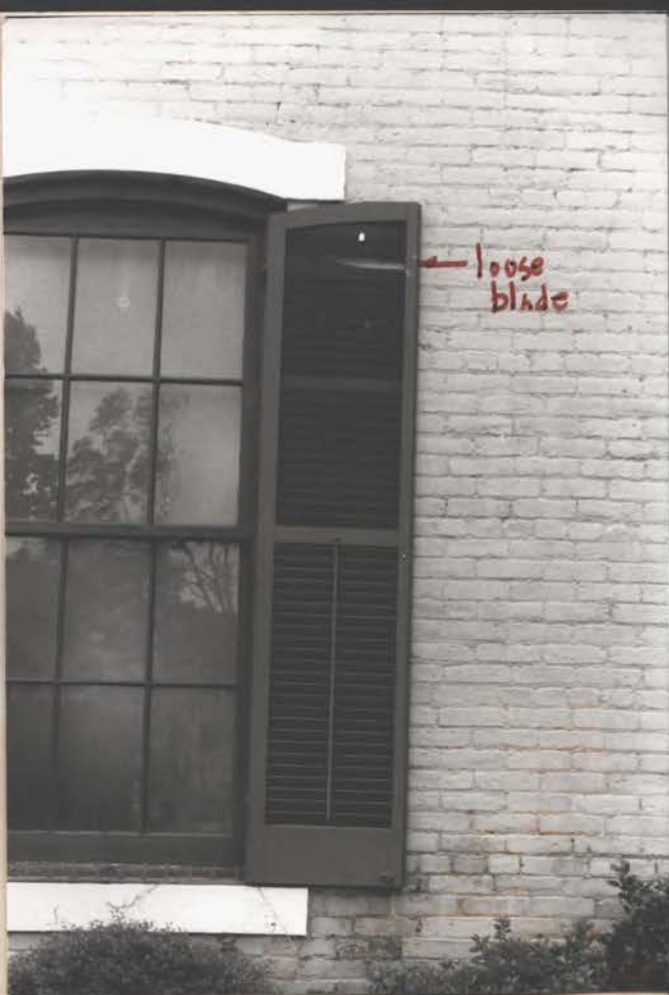
moisture blisters

base rotted
↓ ± 6'



loose blnde

S. WALL



loose blnde

S. WALL

WINDOW BLINDS



SAG - GAP

S. WALL



SAG GAP

EBST WALL

"RISING DAMP" peeled paint

PEELED PLASTER

6



trapped water north of
 bldg., aggravates
 "rising damp"

~~Not~~



S. WALL

FUNGUS
 (ROT)

rotted baseboard & blistered
 plaster inside at S.W. rm.



S. WALL
 (modern raised planter)
 aggravates rising damp



photos N.W. 27' 123

S.W. 11



N.W. 11 - Road House (reconstruction, c. 1979)
HJBA



1860 Memphis & Charleston R.R. Passenger Depot & Eastern Div. N.C.
Photos Nov 9 '97 HJ