

VUE
ALL **proof-file**
OCALA, FLORIDA 32870
Made in U.S.A.

INSERT FILM EMULSION SIDE DOWN

DATE _____ ASSIGNMENT _____ NO. _____

SAFETY FILM 5060

KODAK SAFETY FILM 5060

KODAK SAFETY FILM 5060

KODAK SAFETY FILM 5060



0A

→ 11

→ 11A

→ 12

→ 12A

→ 13

→ 13A

→ 14

→ 14A

→ 15

→ 15A

KODAK SAFETY FILM 5060

KODAK SAFETY FILM 5060

KODAK SAFETY FILM 5060

KODAK SAFETY FILM 5060



→ 16

→ 16A

→ 17

→ 17A

→ 18

→ 18A

→ 19

→ 19A

→ 20

→ 2



CA 1971





NOV • 72

L-R
 Gary Upchurch
 Harvie Jones
 Tony Triole } Jones
 &
 Herrin
 Cath, Gilliam

(Attic vent)
 found discarded
 in attic (not in position)

PHOTOS BY RALPH ALLEN



NOV • 72



NOV • 72

in about 1970, Catherine Gillman
asked J & W Ayres, to assist in
getting a Nat. Regis. Mon. together
on this bldg. to save it from
I-565 cutting, which was then
planned to destroy the bldg.
She knew (we didn't) that Nat. Regis
listing would force the Interstate
to avoid the bldg. IF DID!

Thus, a
"housewife"
saved the
bldg!

Catherine
(Mrs Richard W)
Gillman
(Kelly)

PHOTOS - RALPH ALLEN



Stair @ second floor

• NOV • 72 •



• NOV • 72 •



PHOTO #7
 HUNTSVILLE DEPOT - 1978
 Second Floor Hall - Looking West

PHOTO #8
 HUNTSVILLE DEPOT - 1978
 Second Floor Hall - Looking East

Floor and Joists to be removed to reuse existing structural opening.
 See Plan

New Rail to tie into existing rail smoothly

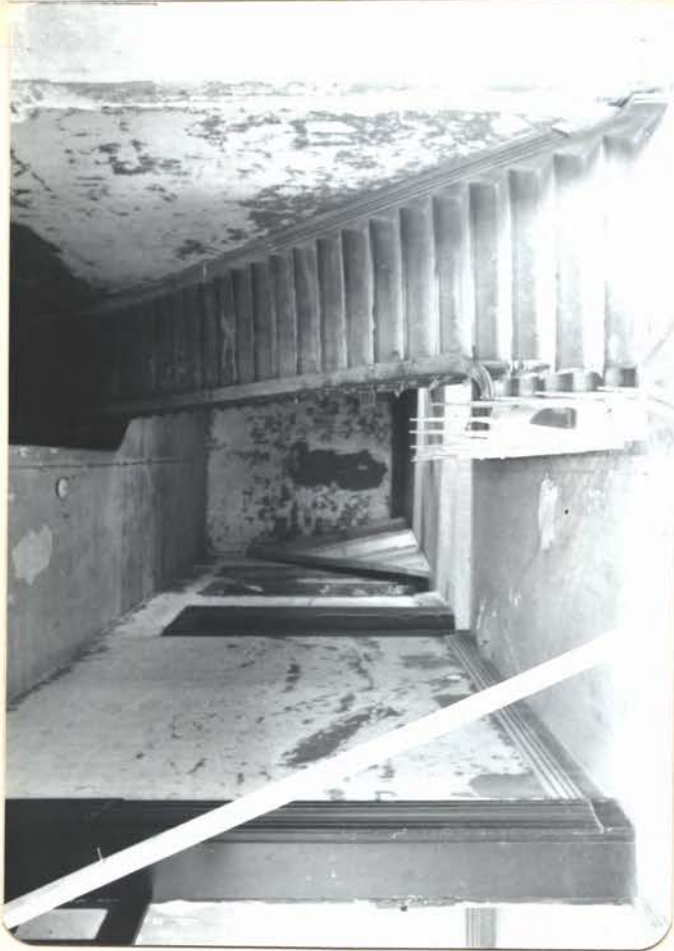


PHOTO #9
 HUNTSVILLE DEPOT - 1978
 End of rail at 2nd. Floor Stair



PHOTO #10
HUNTSVILLE DEPOT - 1978
Stair Detail

NOTE: Scale is in 6 inch increments

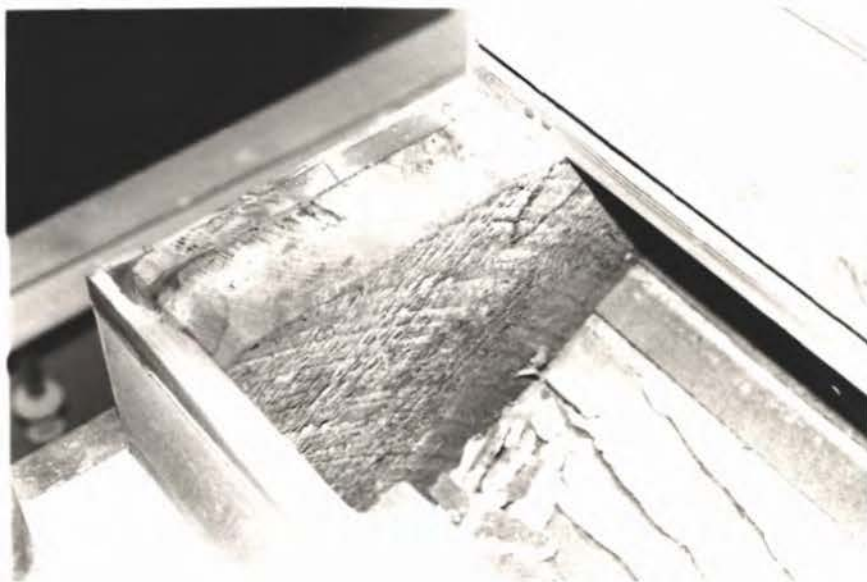


CORRIDOR (ROOM 202)

HUNTSVILLE
DEPOT 1980



EXISTING
CENTRAL STAIR
DETAILS. STAIR
RUNS FROM
2ND FLR TO 3rd
FLR



HUNTSVILLE
DEPOT 1980



WALL
SPRINGER

EXISTING
CENTRAL
STAIR DETAILS
STAIR RUNS
FROM 2ND FLR
TO THIRD FLR

TOP VIEW

Remove 3 x 4 x 24" wood plate and anchor bolts from wall

Remove board from wall.

Electric service down
to panel (to remain)

Remove all loose or
abandoned wire

Note debris at floor to
be removed.



PHOTO #29
HUNTSVILLE DEPOT - 1978
Business Office One - Looking NW

Exposed Lath at ceiling

Note Brick in Firebox
to be removed.

Note debris at Floor to
be removed.

Place all stove parts
and miscellaneous building
parts in "Storage Area".



PHOTO #30
HUNTSVILLE DEPOT - 1978
Business Office Two - Looking SE



FIREPLACE
SOUTHEAST WALL
SEC./TREAS. ROOM
207





SEC. / TREAS. (ROOM 209)



FIREBOX IN N.E.
2ND FLOOR ROOM
← July 80

FIREBOX IN S.E.
2ND FLOOR ROOM
JULY 80 →



FLOOR IN EAST
END OF TICKET
AGENT AREA
(LOCATION OF NEW
EAST STAIR)
← JULY 80

2ND FL SE ROOM (202)

FIREBOX IN
N.W. 2ND
FL. ROOM →
JULY 80



SAFE DOOR AND METAL MANTEL
IN S.E. 2ND FL ROOM (NORTH WALL)
← JULY 80



FIRE PLACE
SOUTHWEST WALL
MUSEUM OFFICE
ROOM 203



→ CEILING BELOW



Door 16 & Frame to be removed and replaced in
"Storage Area"

Exposed Lath at ceiling

Sorting Boxes



Note brick in Firebox
to be removed.

Note existing debris
to be removed.

PHOTO #31
HUNTSVILLE DEPOT - 1978
Board Room - Looking West

Extensive ceiling
damage (see "Finish
Removal Schedule")

Note debris at floor to
be removed.

See "Plan" for floor damage
areas.



PHOTO #32
HUNTSVILLE DEPOT - 1978
Board Room - Looking East



PHOTO #36



PHOTO #37

HUNTSVILLE DEPOT - 1978
See "Plan" for locations
of work on floors.



PHOTO #38

Note damaged floor to be repaired.



PHOTO #39
HUNTSVILLE DEPOT - 1978
Board Room - Looking East

Note damaged floor to be repaired.

Place all stove parts and miscellaneous building parts in "Storage Areas".



PHOTO #40
HUNTSVILLE DEPOT - 1978
Business Office Two - Looking West

CA:1971





ELEVATOR LOBBY & EXHIBT (ROOMS Z10 & Z11)

James — the stove parts
might ought to be saved,
particularly if we can assemble
a complete stove

PHOTO 527
HUNTSVILLE DEPOT - 1978
Upstairs entry - Looking West

PHOTO 528
HUNTSVILLE DEPOT - 1978
Upstairs entry - Looking West

Typical fireplace
(Office - 210)
Note brick in fireplace to be
moved.

PHOTO 528



FIRE PLACE
NORTH EAST
EXHIBIT
ROOM 266



12
T.S.S. S.B.
 C





EXHIBIT (ROOM 206)



EXHIBIT (ROOM 206)



PHOTO #26
HUNTSVILLE DEPOT - 1978
Upstairs entry - Looking West



PHOTO #27
HUNTSVILLE DEPOT - 1978
Upstairs entry - Looking East

Typical Fireplace
(Office - 210)

Note brick in Firebox to be re-
moved.



PHOTO #28





NORTH VAULT

NOTE DIRT MARKS
FROM OLD SHELVING

HUNTSVILLE DEPOT
1980



FIRE PLACE
NORTH WEST
EXHIBIT
ROOM 205



CORNER
NORTH WEST
CEILING



(ROOM 205) EXHIBIT

CA
1971





CA
1971





• NOV • 72

area RR Hwy
demol.
c. 1990

20
+

Church St.



• NOV • 72



Wall to be removed.

Doors 18 & 19 plus frames
and hardware to be
placed in "Storage Area"

Save all "V" Joint
1 x 4 and place in
"Storage Area"



Lower Right
Door 20 and frame
to be saved.

PHOTO #33
HUNTSVILLE DEPOT - 1978 Resident Engineer - Looking NE



PHOTO #34
HUNTSVILLE DEPOT - 1978
Bunk Two - Looking SW

PHOTO #35
HUNTSVILLE DEPOT - 1978
Bunk One - Looking SW



BOARD ROOM (204)

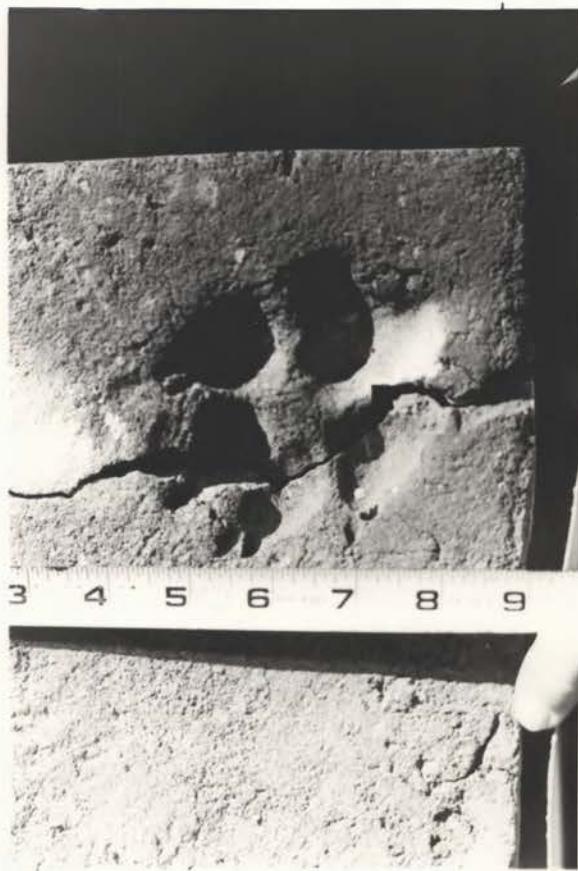


BOARD ROOM (204)

2ND FLOOR
SOUTH SIDE
CHIMNEY

offset is original
(note framed hole in roof)
flue thru roof reconstructed
in 1977





Brick w/ animal print.
Found in hearth @ Huntsville Depot
May, 1981
2nd fl. south east.