



1964 City Hall

Huntsville Utilities Bldg. - 1955
 Turner & Northington, Avn. - Florence, AL
 (later Northington, Smith & Kernett)

1964 photos Aug 1998 Harvick P. Jones FADA

1961 City Hall



c. 1988
 Am South Bldg

→ N
 Springs St.

→ Big Spring
 Park

→ Big Spring
 Branch



Bolt - concrete work mid-1960s
 masonry repairs by SFA Arch.
 (E. Allen)

24

24



HILLS UTIL.
 1955



elev. pent
mid 1980's
JFH Arch

light-tone
panels are
bright colors
(red, yellow
etc) derived
from abstract
paintings by
Piet Mondrian
x N (Dutch)
Big
Spring
Park



Spring
Branch

N



N

S. Side

Big Spring Park

2014

3044



↑
Util. truck entry

S. Side



S. entry

← Spring branch

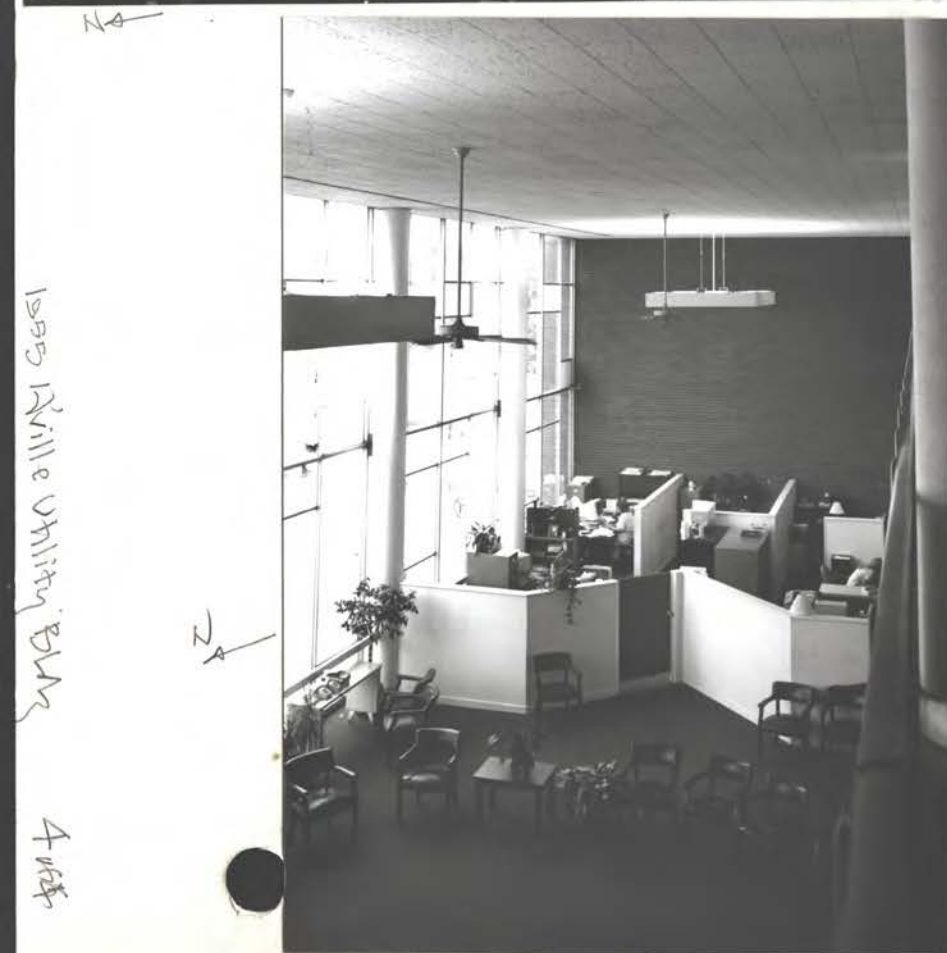


silly fans
are c. 1970s
+ do no good,
in this tall
large room

Stair
↙



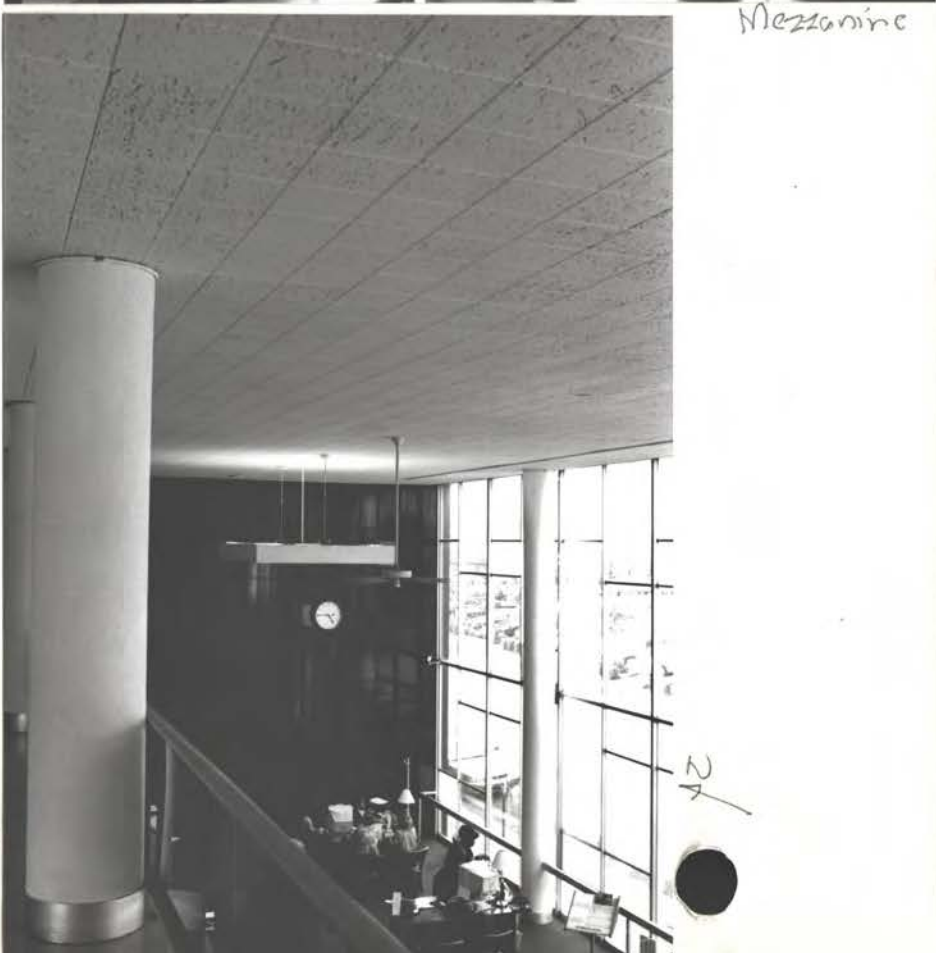
Mezzanine



1995 Irvine Utility Bldg

4 with

mezzanine



24