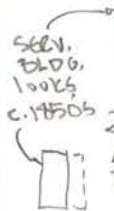


5-19-1
Late Vic. Main Hse w/ c.1960's alum. siding



302 Oakwood Ave., Huntsville, AL
Photos Jan. 1997 H.P. Jones

SW



MAIN
HSE

SE



BRICK SEEN. BLDG BEHIND MAIN HSE.
LOOKS 1850's-60 PER ARCH. EVIDENCE

SW



Chim. caps look c.1860. Brick & siding look c.1850-60

SE

302 Oakwood Ave.
c.1850-70 SERV. Bldg.



This type wd. lintel
not used after Civil War.
Note C.I. blind-hooks

Med. stones

note C.I. blind-hooks

typical
of early
19th c.
- not generally used
after 1850's



S. side of Sew. Bldg
(Vic. Sash)

20th c. plank paneling



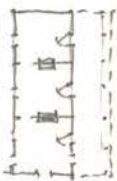
vic. door
(narrow planks)

c. 1850's mantel,
vic. c.i. grate

modern plywood cabinets



SOUTH
RM.



302 OAKWOOD AVE. - c. 1850's serv. bldg. interior (per evid.)
photos Dec. 97 A.P. Jones FAIA

← 20th c.
paneling

← c. 1850's type
Greek Revival door
(note hand-planed
surfaces on wood
Mod. locks)



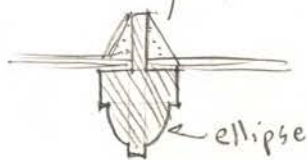


← N

EWB sash, S. Dem.
Appears original

← N

note sash
twist-latch
to hold sash up
(typical of 1800-1860)



MOUNTING —
one common type in 1850s



H → East door, Center rms. (original)



N ← Later lock



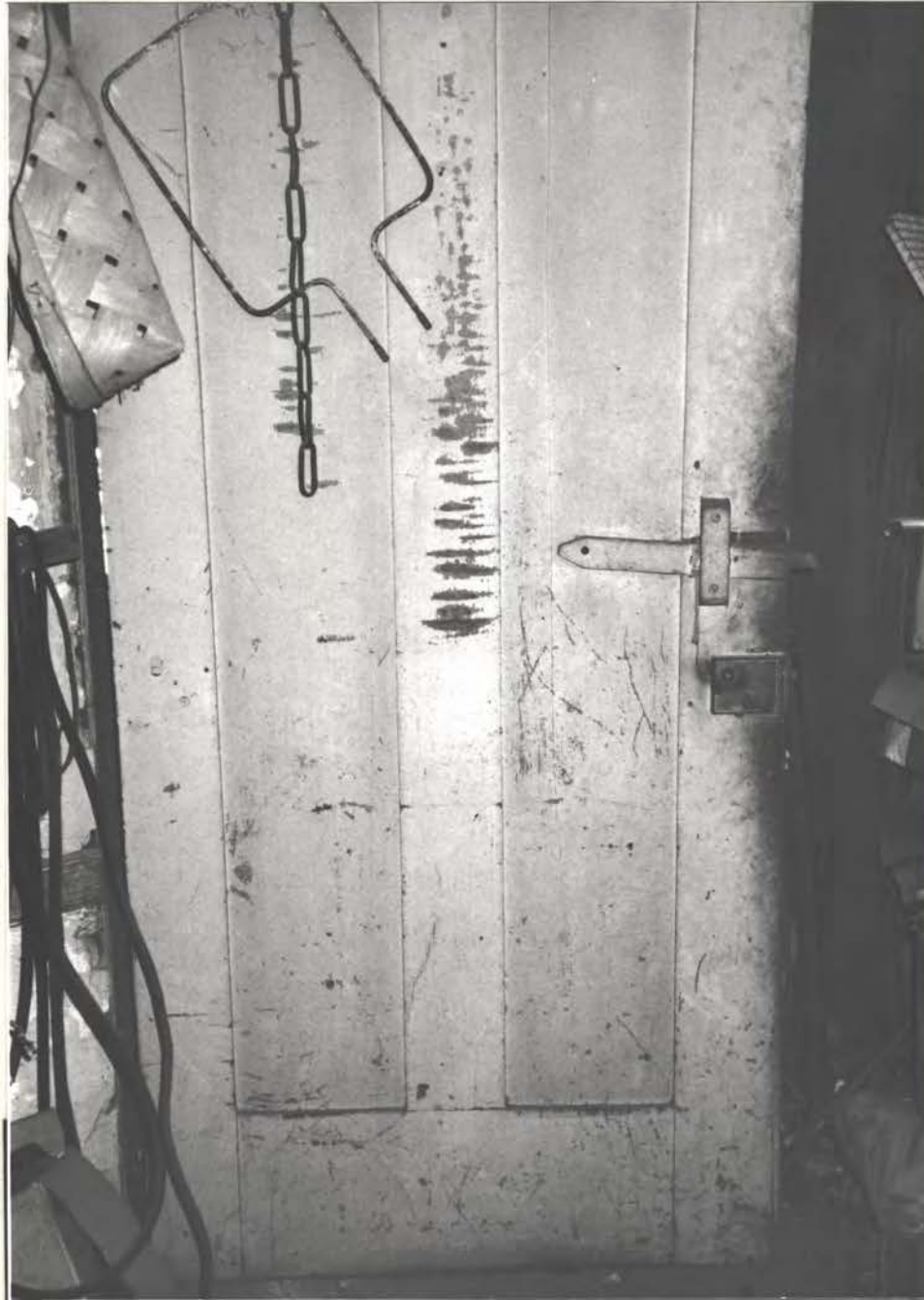
West
Shut.,
N. Rm

→ N



→ N

↳ note twist holdopen



Greek Revival (c. 1840-1860)
 Serv. Bldg. 302 Oakwood Av
 Huntsville AL
 Photos April 1998
 Jane Barr

Greek Revival style
 2-panl. door (c. 1840-1860)

← wood lift-latch
 (original). Keeper is gone

← late-Vic. lock (knob M)

cast
 door



← heavy
 "unitary"
 cast iron
 hinge =
 typical
 1800-1860

← thru-
 mortise
 + tenon
 jt. =
 typical

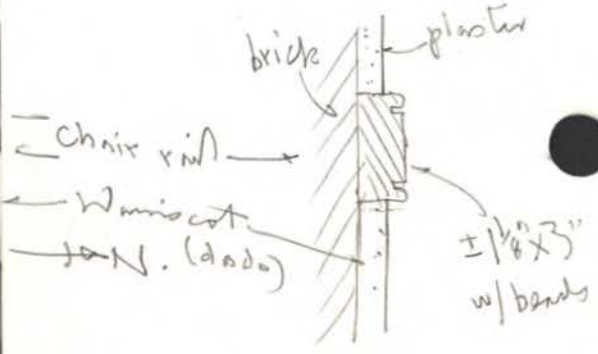
↑
 ↓
 EXT.
 (t. SAED)



S. W.M.-M metal - looks mid 19th. cent. Black = typical 1800-1860



Not a cooking f.p. (arranged sides of only $\pm 3'-9"$ W)




Blank masonry = most-typical 1800-1860



cell

↓
top rail of
door
↑

← out-of position vic lock (high on door)

2 pnl. ()

Greek Revival door
probably c. 1840-60

← EAST WALL

H 4



CELL

hand-split (possibly) oak lath
indicates pre-1860 construction