

JONES & HERRIN

Architecture/Interior Design

July 5 '95 Harvie P. Jones, F.A.I.A.

"The Huntsville News"

Attr: David Bowman

David - the house at S.W. corner of Smith & Adams dates to before 1861 in its present general plan, with remodelings of probably c. 1900 & c. 1920's.

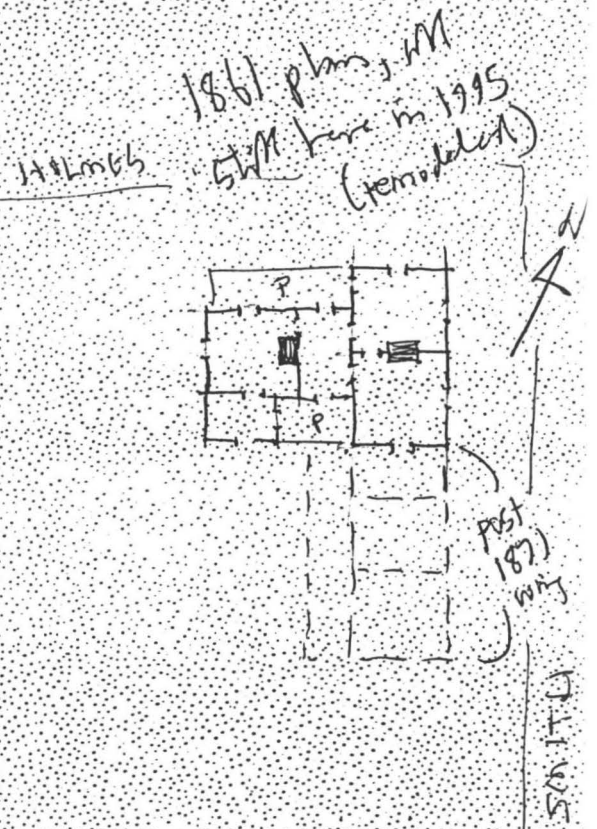
See 1861 & 1871 maps attached. These confirm the split lots, $\pm 6" \times 148"$ front porches, $\pm 8" \times 10"$ sills & $\pm 3" \times 10"$ joists as evidence. The house is likely 1850's, per its floor plan

similar to
504 Evans,
702 Adams

104 Jefferson Street
Huntsville, Alabama 35801
Telephone 205/539-0764
Fax 205/534-2289

Herrin

H.P. Jones



1861 ASV

Dr. C. H. Shaffer

W. Fleming, Geo. H. Burns

J. H. Ware, C. W. Hubbard

STREET

Jno. S. Dickson

J. L. Farris

STEELE STREET

J. A. Hanks

Rison & Tommons

Mrs. M. Bradford

SMITH STREET

1861 ASV

CALHOUN STREET

Isaiah D...

EXPENSE

CONCRETE

EXPENSE

J. H. Cooper

J. L. Farris

W. B. Figures

W. B. Figures

W. D. Chubb

M. W. Steele

D. L. Murray

A. J. Johnson

W. H. Powers

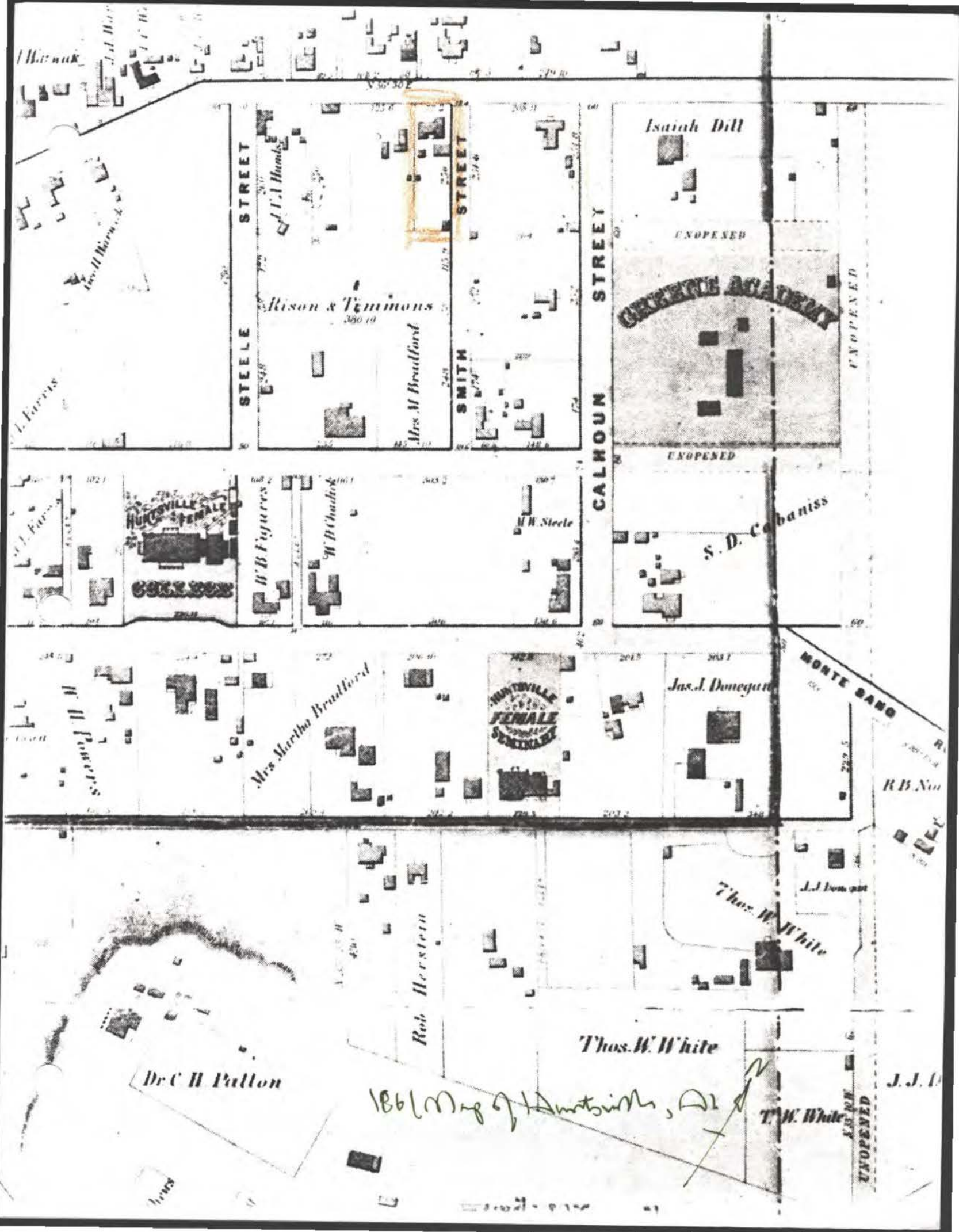
Mrs. Martha Bradford

WARTVILLE
FEMALE
SEMINARY

Just. J. Dan...

Rob. Meekin

Thos. W. White



W. H. Wainwright
 J. J. Wainwright
 J. J. Wainwright
 J. J. Wainwright

STEELE STREET

SMITH STREET

CALHOUN STREET

Isaac Dill

Rison & Tommons
 380 19

Mrs. M Bradford

GEOGRAPHIC ACADEMY

UNOPENED

UNOPENED

UNOPENED

MURKOVILLE FEMALE COLLEGE

W. B. Figures

W. B. Chadwick

M. W. Steele

S. D. Cabaniss

W. H. Powers

Mrs. Martha Bradford

MURKOVILLE FEMALE COLLEGE

Jas. J. Donegan

MORTE SAND

R. B. No

Rob. Herstein

Thos. W. White

J. J. Donagan

Dr. C. H. Patton

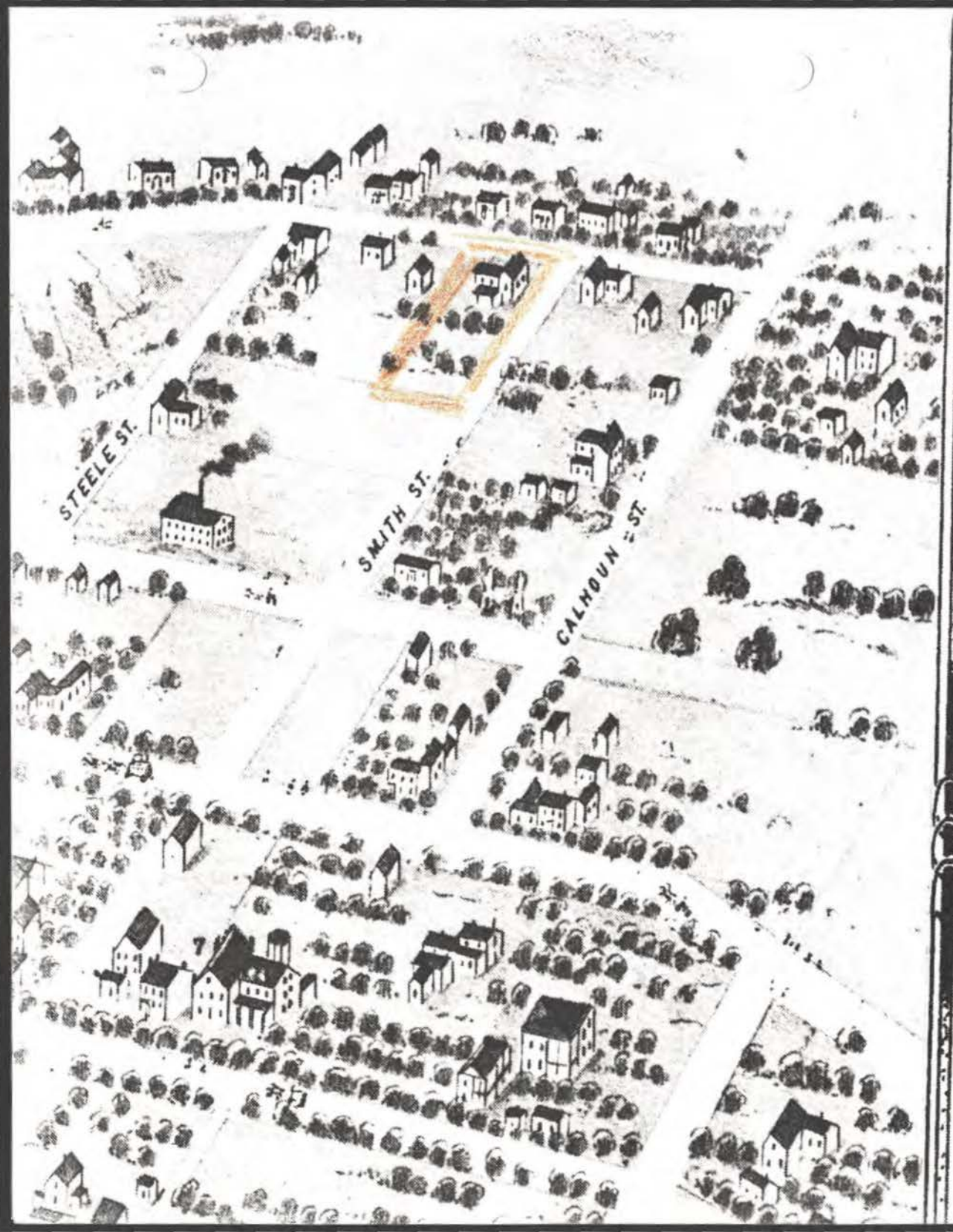
Thos. W. White

1866 Map of Amherst, Al

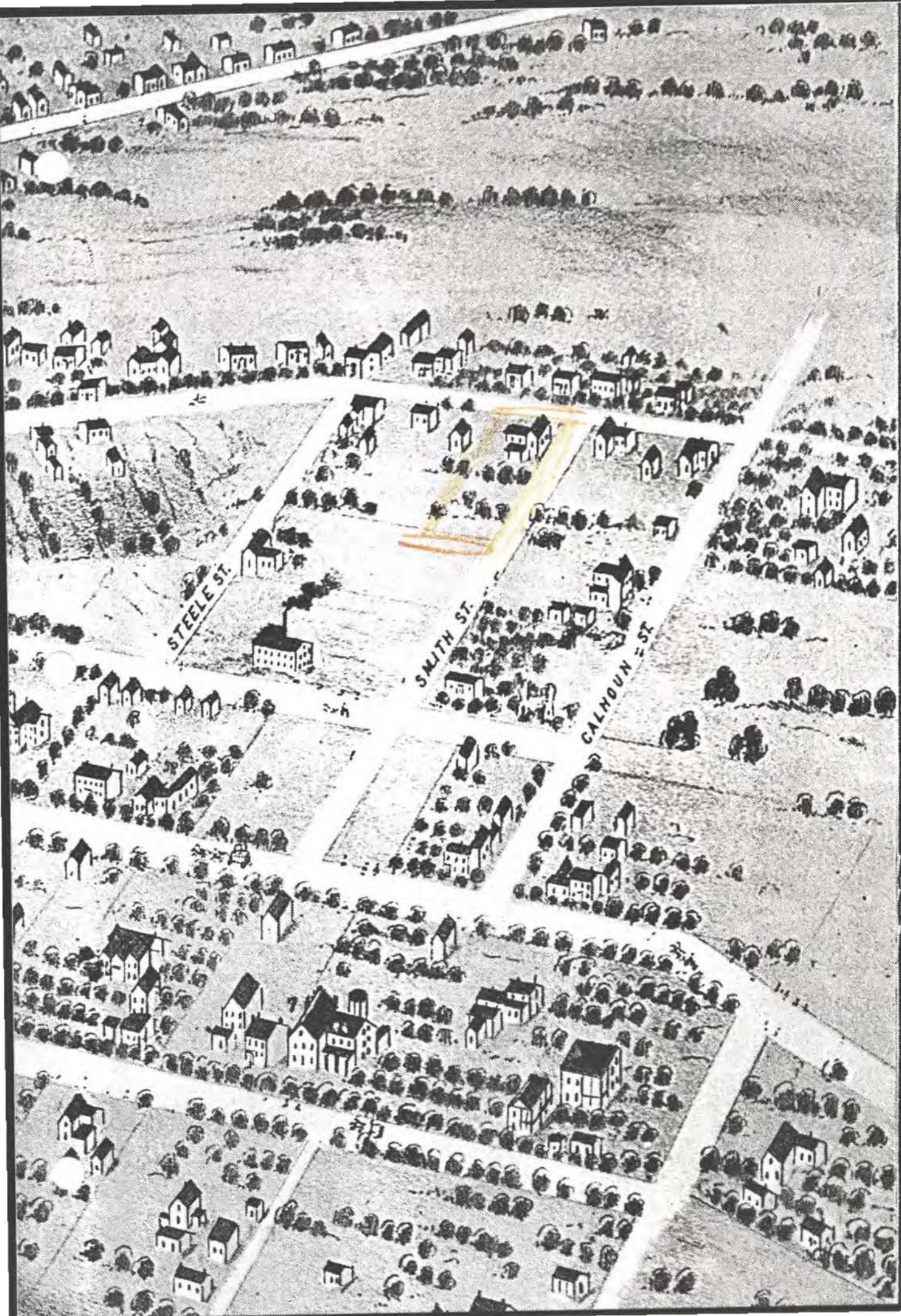
T. W. White

UNOPENED

J. J. D



1871 View of
Huntsville, Al



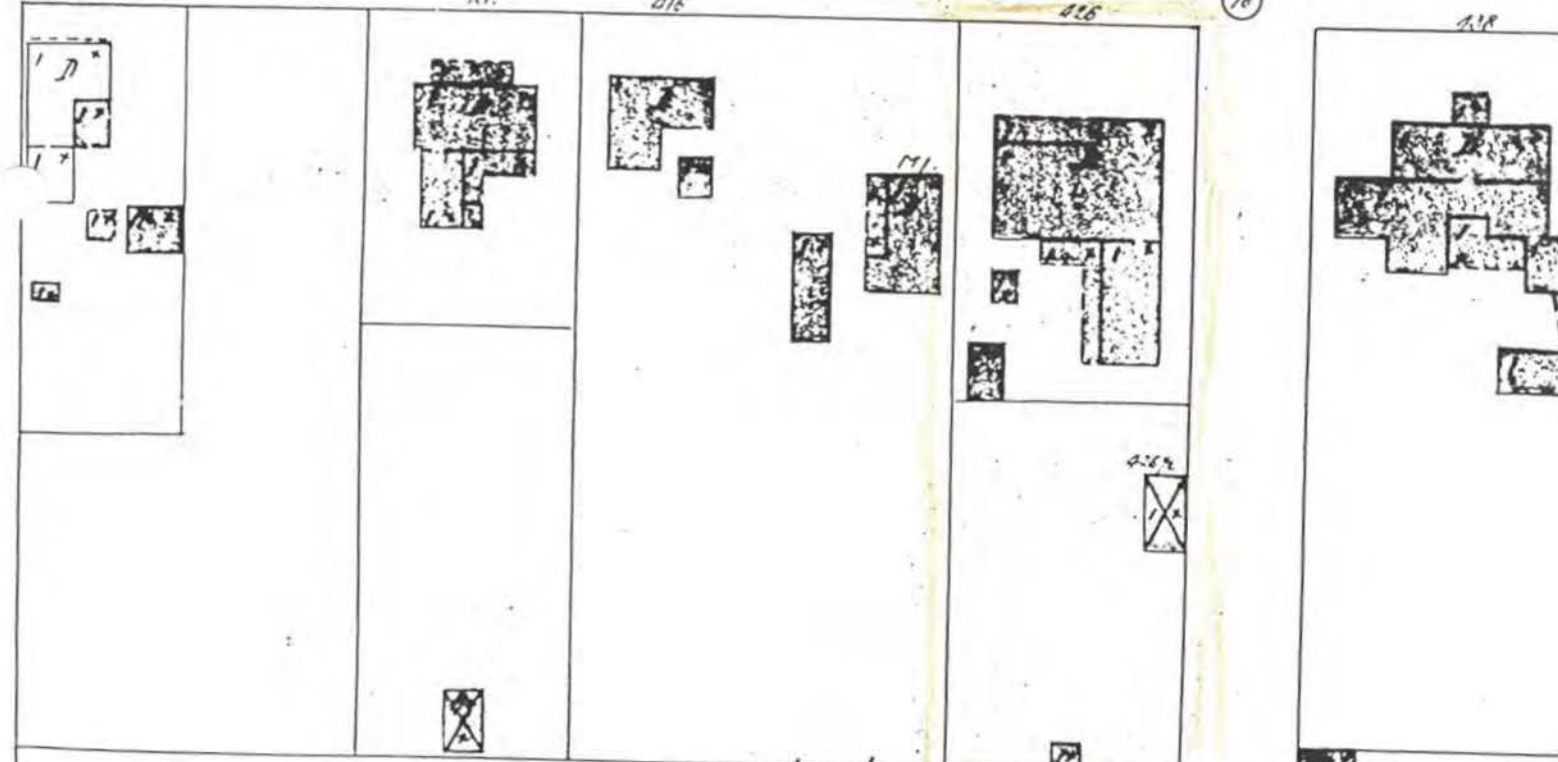
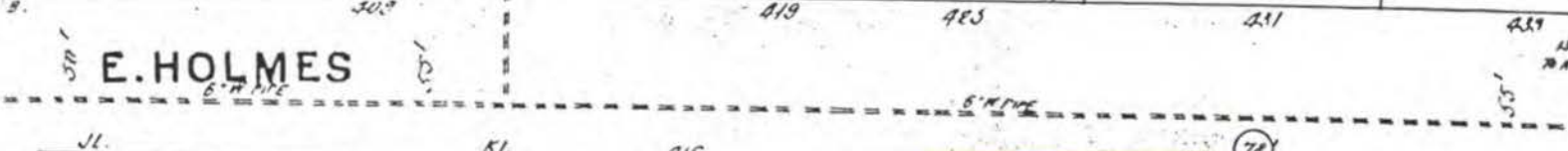
1871
hsv

PATTON

T 112



E. HOLMES

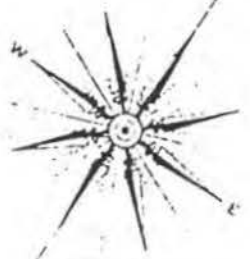


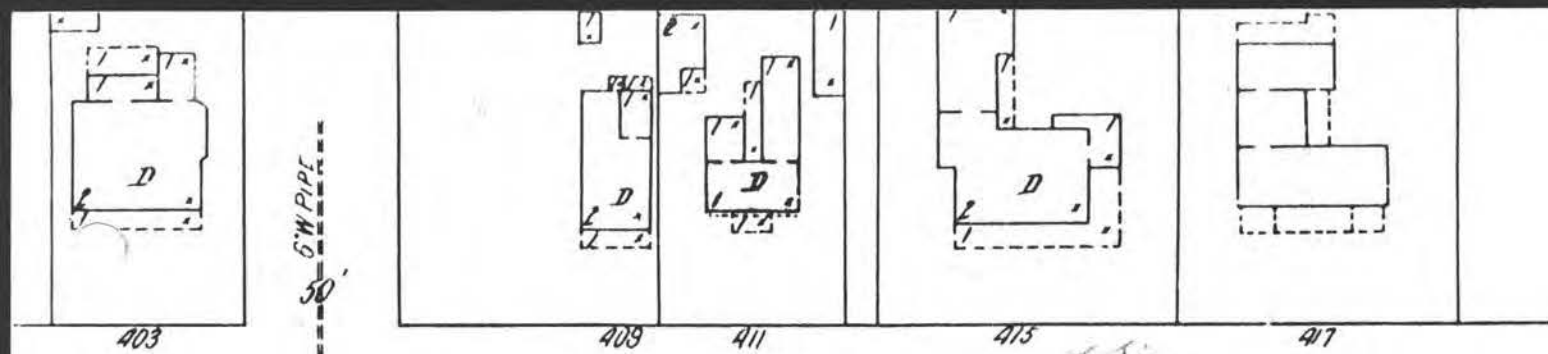
1898 Sanborn

50

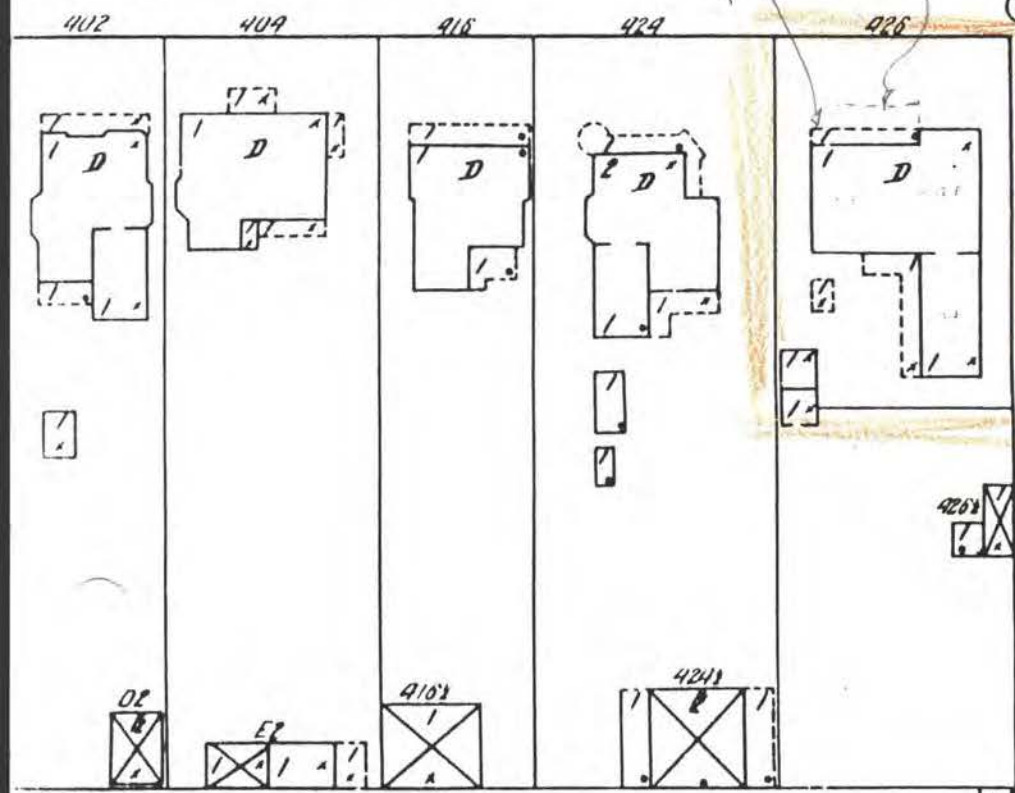
SMITH

51





LMES

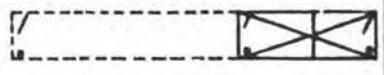
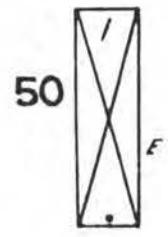


note shallow porch
 plaster porch, extent in 1997

S.W. PIPE

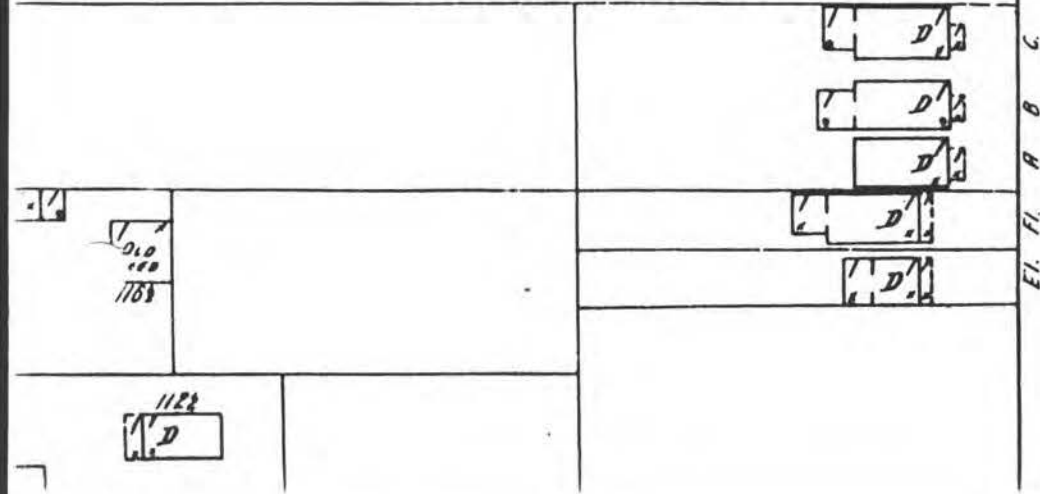
S.W. PIPE

12



SMITH

1913 Sanborn Map
 of Huntsville AL



S.W. PIPE

321

HOLMES ST METHODIST CHURCH
N. W. STOPS
LIGHTS - ELEC & GAS

G.W. PIPE
50'

325

403

409

411

415

E. HOLMES

(21)

(20)

400

402

404

406

408

426

37'

G.W. PIPE
40'

Post
1871
per map

212
221 (208)
202 H.E.
210 B.
217 A.
215 (211)

STEELE

50

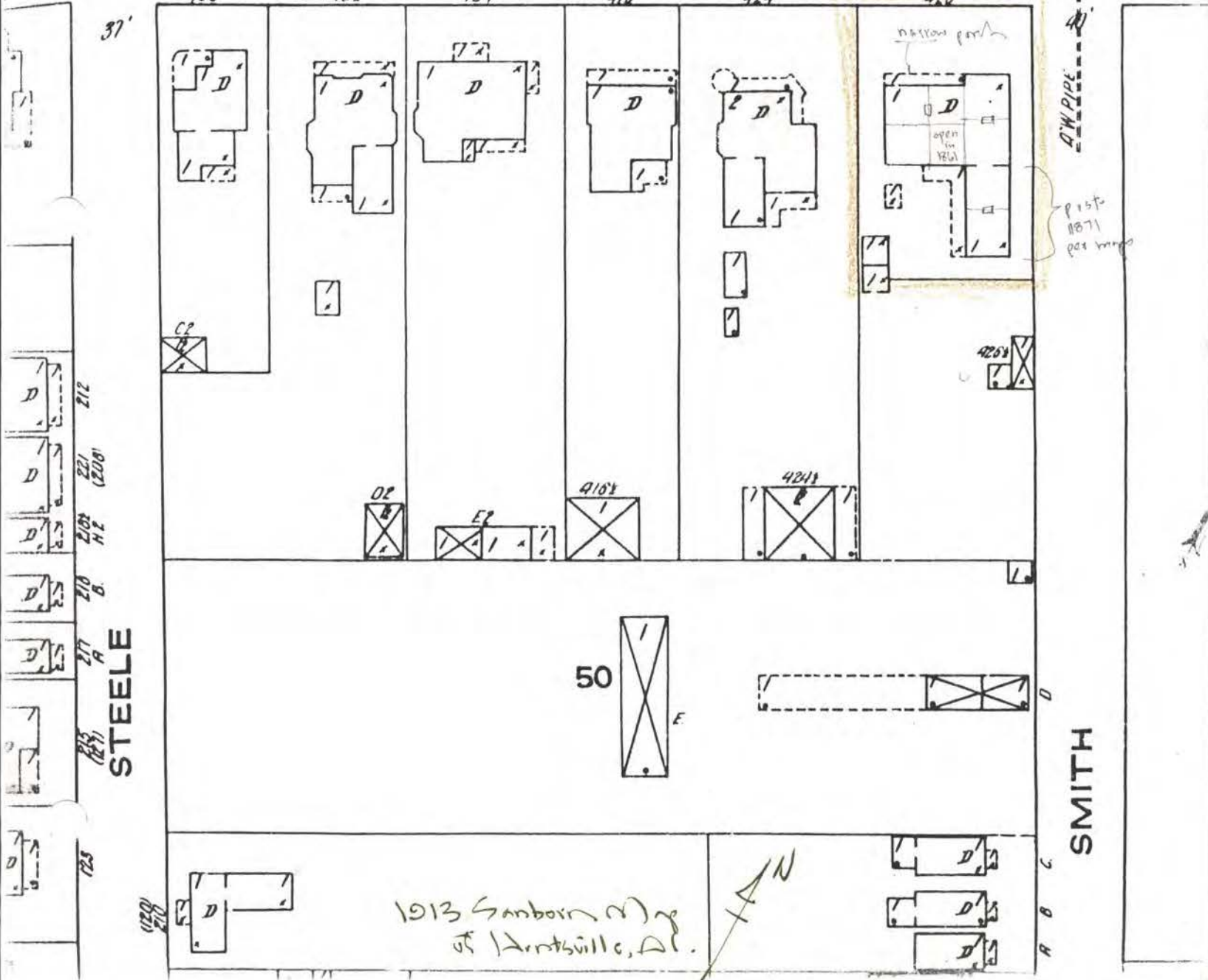
SMITH

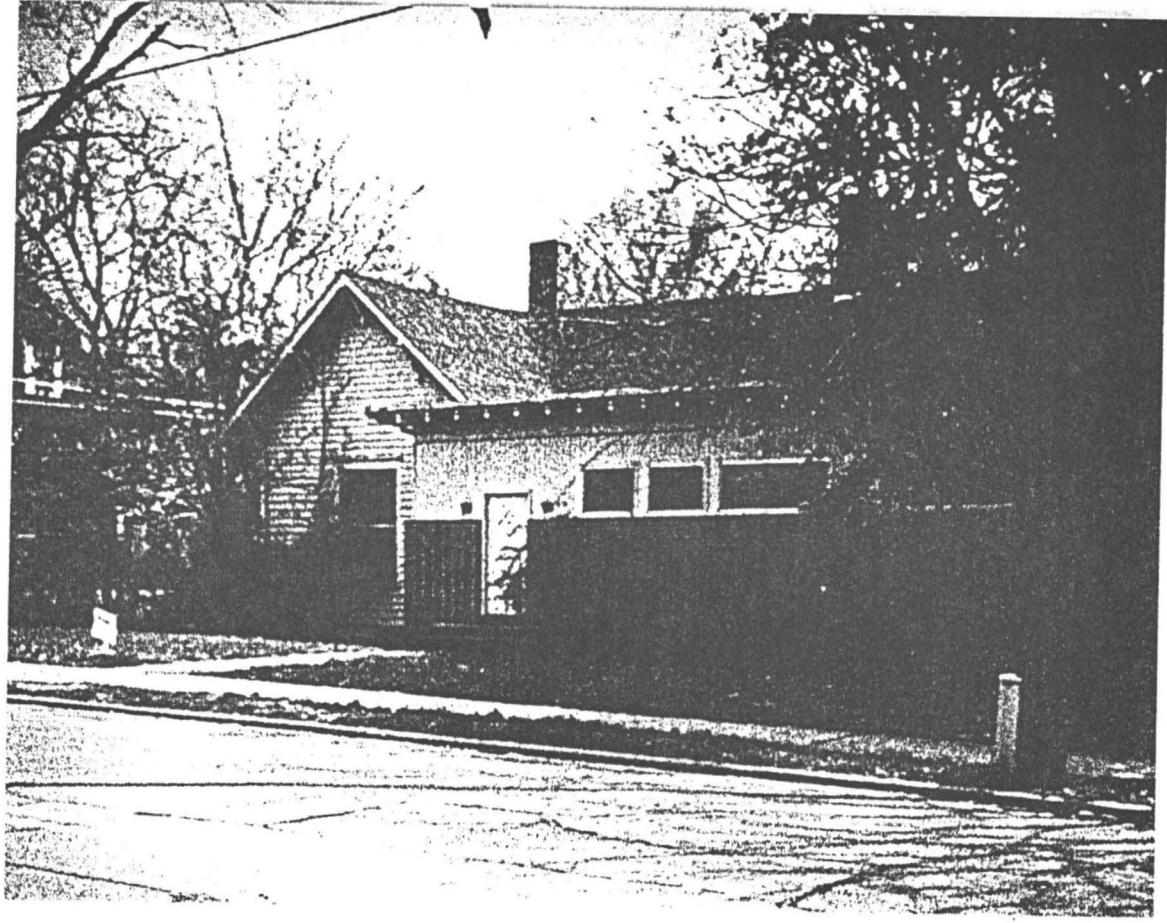
1913 Sanborn Map
of Huntsville, AL.



725
726 (721)

A B C







PRELIMINARY RESTORED VIEW
PRE-1913 LATE VICTORIAN HOUSE AT S.W. CORNER OF HOLMES & STEELE STS.
HUNTSVILLE, AL., OLD TOWN HISTORIC DISTRICT
HARVEY P. JONES, F.A.I.A. 1 APRIL, 1995



Tony Adair.
 P.O. 202
 35804 Q

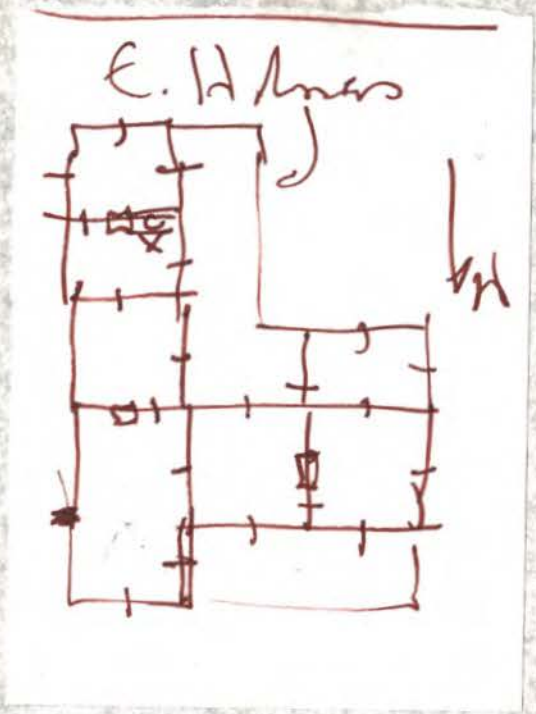
Home 776 0314
 Business 533-6044
 Pager 860-7463

Sanborn: 1861 maps
 (1871 1913)
 K & H
 8/2/13

porch enclosed in c.1960's for
 chiropractor's office, when Holmes Ave
 was zoned for offices

Porch is c. 1900±
 See Sanborn maps

510 Holmes Ave., 1850's (see 1861 map)
 photos Sept. 97 HP Jones at beginning
 of renov. by Dr. Robert Hush
 (some work already done by George Kirk)



See pg. 8 for rear

1 of 7

2



N.E. Corner

22

bracket of
eave =
c.1900+

window =
c.1900+

22



c.1900
porch
roof
c.1960s

enclosed
porch
for office
c.1960s



24



22

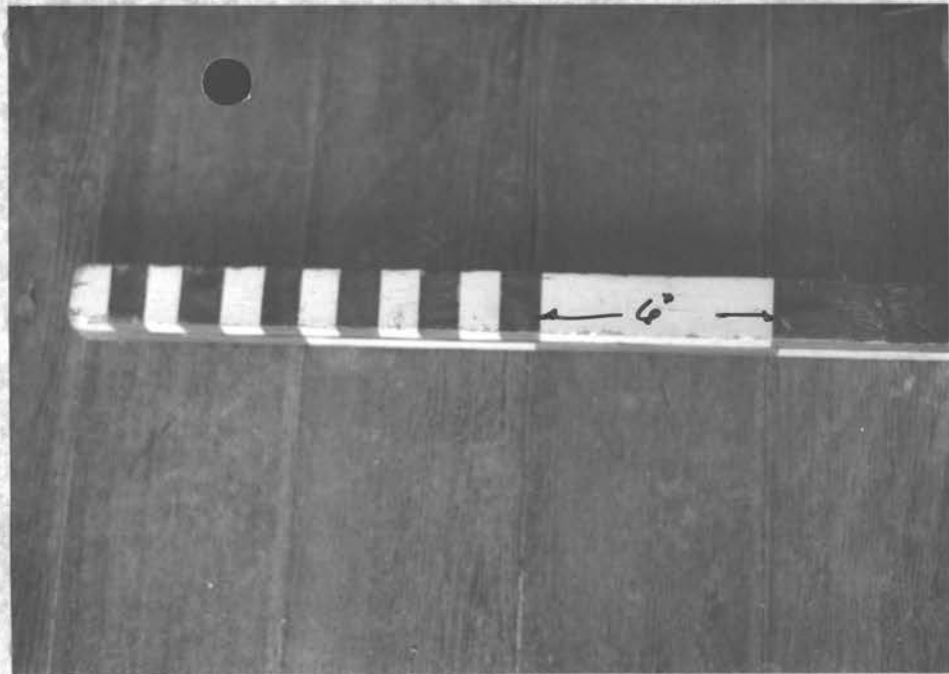


Front parlor, N.E. Rm.
Mantel look c.1900, late Vic



later door

247



top

Entry
HM

heart pine fl.
1850's



mantel
trace, see
below

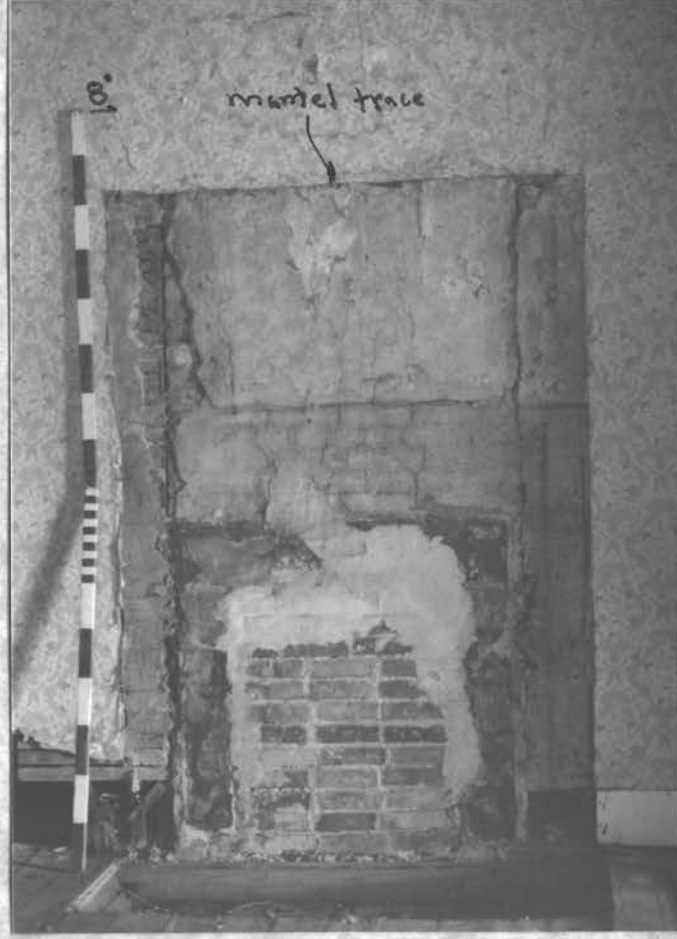


1850's door (grained)

tenon
end

6"

C.I.
hinge



6"

mantel trace

547



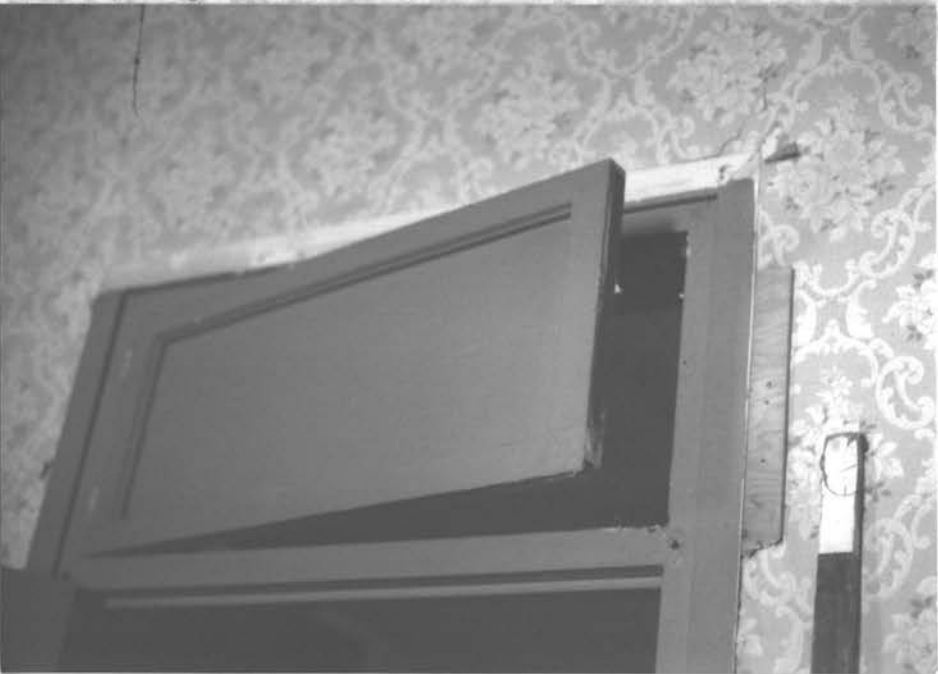
Typical 1850's
transom
(this one in
entry hall,
E. wall)

N
→

Entry hall,
S. Wall
transom
(paint on
glass)



1850's sash
reused at
S.E. wing,
S. gable



1850's
mantel
relocated
to S.E.
Wing,
S. room



→ mantel shelf



N.W. Rm, E. wall
1850's mantel & door

707

bn
soffit



N. Wall of enclosed porch - LOOKING UP

"bungalow" porch col trace (not orig. to porch)

c. 1960's wall



S.W. corner of enclosed porch



1850's N. Wall of N.W. Rm. (clapboards removed by Geo. King - mistake.)

← hand-split oak lath (indicates pre-1870±)
← plaster keys



↖ N S. WALL, N.W. WINDOW



↖ N Smith St ↗



Smith St.

↖ N



← later large col. traces are probably late 1920's "bungalow" flat cols. that replaced the earlier c.1914 ± 8" cols.



510 Holmes Ave. E. - Huntsville, AL.
photos Jan. '98 H.P. James FAIB after removal of 1960's enclosure of post-1914 (per Sanborn) porch

← early col. traces in North that porch cols. were like N.E. pilaster of hse (p.2)



late 1920's bungalow porch, 7 ft. patch of c.1960



Col. design
copied from
N.C. pilaster,
for lack of
proof of orig.

→ N

H 8



Cont'd. (Tony Adair) incorrectly pushed col. caps back
flush w/ architrave. Promised to correct this but did not.



Porch
roof is
possibly
1900-1920.
See 1861
map for
original
shallower
porch

→ N



→ N
Smith St. ↗

510 Holmes Ave. (1850's + later porch etc) - Photos after repair. - June 1998 HPL/Janet



2
a

1998 ADD. ↓
↑ (FARM. RM.
& S.W. BATH)

Jerry Stallings, Arch.