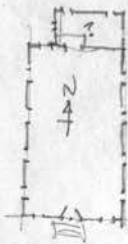
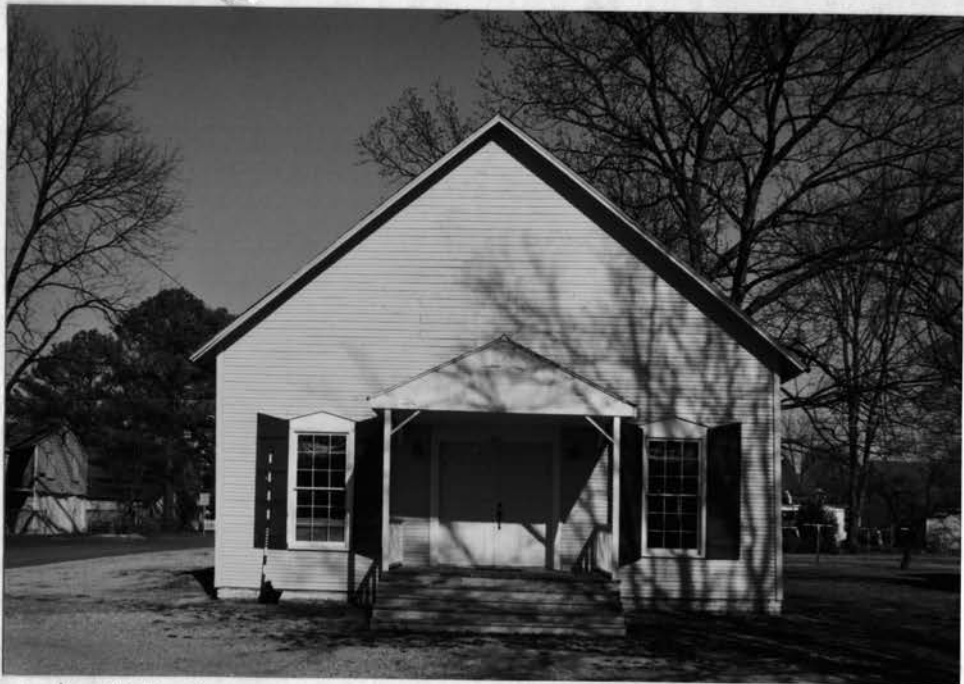


1 of 4



porch &
shutters
are late
20th cent.



Late Victorian
Church - 601 Hunnes Ave
said to be 1880's
N.E. Corner of
Hunnes & Demert
N.E. Huntsville, AL
photos Dec. 1996
H.P. Jones FAIA

PN ← Hunnes Ave →

N →



N →

← Demert St

1880's church
Hunnes Ave.



↖ N

fakes shutters = c. 1960 or later



↖ N



↖ N

↖ chance |



CLAPED



↖ SW
Corner

3 of 4



2N

2N

modern steel 6-pnl. door
at entry

2 of 4

2A



pine floor looks later (± mid 20th C.?)

* metal guides (aluminum?)



mod. latch

All sashes =

Moderns, mid 20th cent. or later

Original would

typically be

2/2

