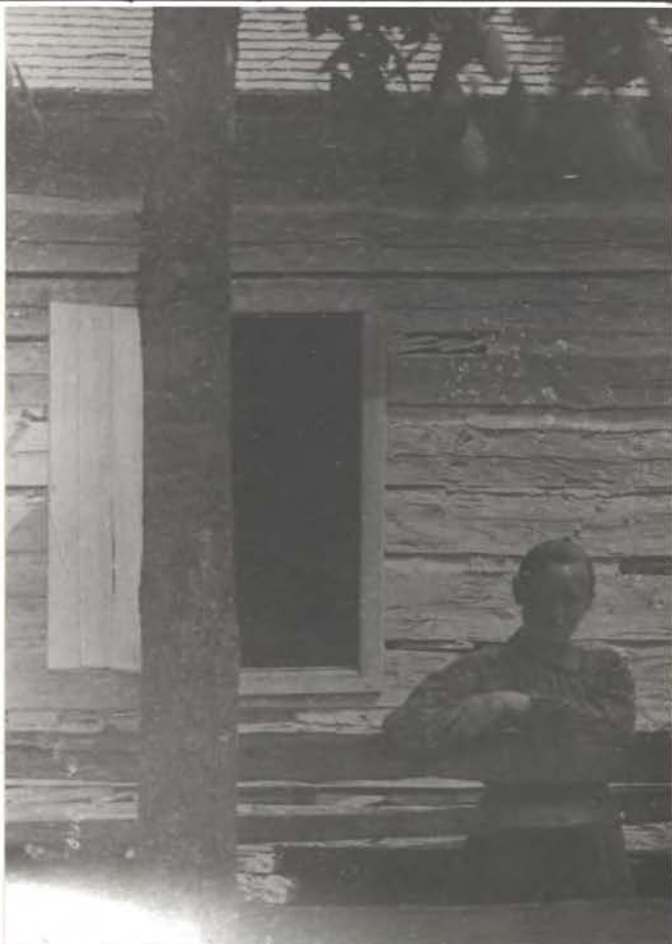


Note NO WINDOW SASHES (shuttered open, only).  
Indicates early 1800's date for hse constr.

Note split-rail fence, common in N. AL.  
as late as 1940's (survivors)



JOSEPH ADAMS  
LOG HSE  
N.E. LIMESTONE CO.  
AL.

Log hse (dogtrot) - Joseph & Amanda Adams,  
Upper Ft. Hampton Rd., N.E. Limestone Co., AL  
Copy Feb. 1994 H.P. Jones, FAH, Huntsville, AL  
from copy owned by relative, William Lakin Bond  
of 426 Eustis Ave, Huntsville

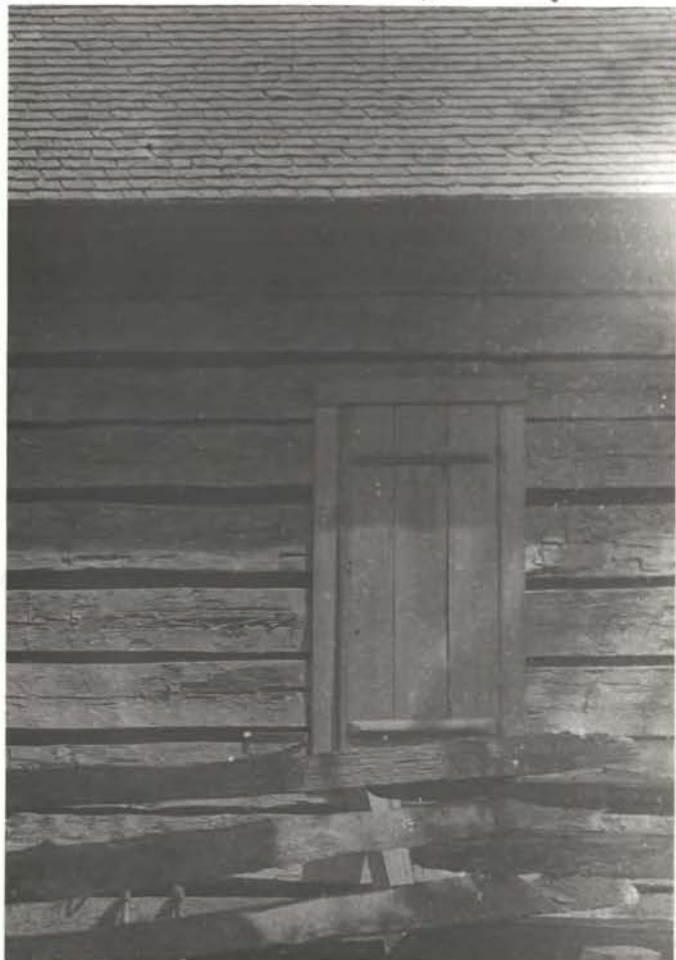
Photo unlabeled, perhaps 1870-90(?)  
Shingles look new, machine-sawn  
Note no sash in window oppo.

(Hse gone)

Half-dove tail hatching (most common type)  
(probably lime dabling)



No chinking or dabling in this pen (is in left pen)  
∴ This pen probably used for store only



MORRIS LOG HSE  
LIMESTONE CO.  
AL. (OVER)

Shuttered window (no sash - see upper left photo)