

c. 1820 Log store here ruins (Saddledogz ^{trails})
 FORTS OF CYPRESS (main hse burnt by
 This hse = arson (kilo) lightning in 1960's)
 in c. 1992

See 1930's HABS drawing of this hse
 photos HP June, Feb '94 (HABS-A1375)



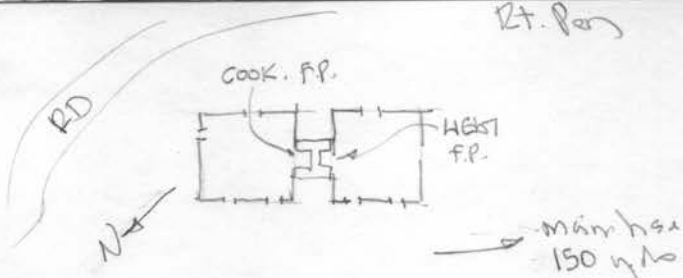
* ADD. * HABS DENIES SHOW * ADD *

Left Pen (large cooking fireplace)
 P.S. - ruins gone except chim., 1997



FORTS OF
 CYPRESS
 1820's LOG

Rt. Pen



1062



Front left corner
of H. pers
Vee-notch



Chim. front (limestone)

Ret. pan

P.S. only the chim. stands in 1998