



Roundhouse
L & N Railroad
Birmingham, AL
1/21/81

PHOTOS BY RALPH ALLEN

Exterior Details



→ A Jones (rt)



JAN 21, 1981
L & N R.R.
BI NINGHAM, ALA.



Exterior Details

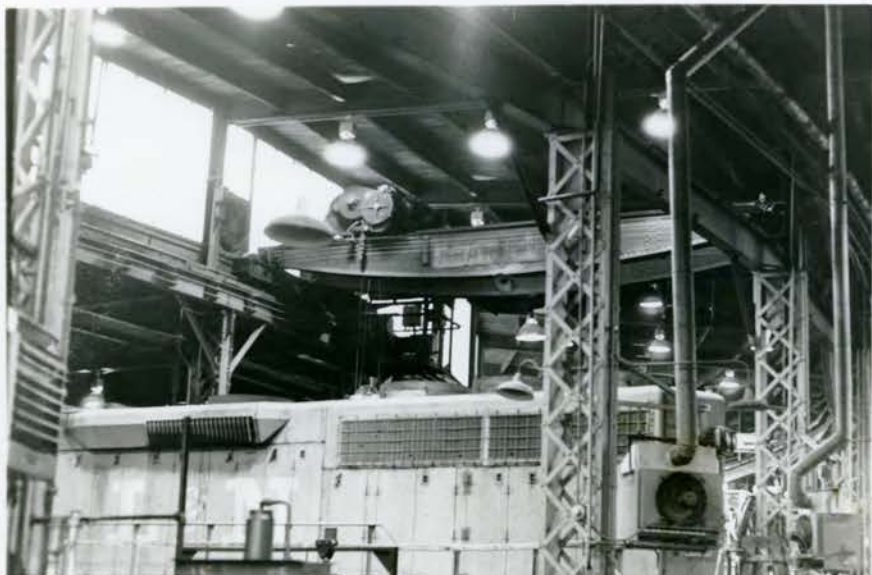


JAN 21, 1981
L&N R.R.
BIRMINGHAM, ALA.



→ High Dolly, Hsr.
Depot Ed

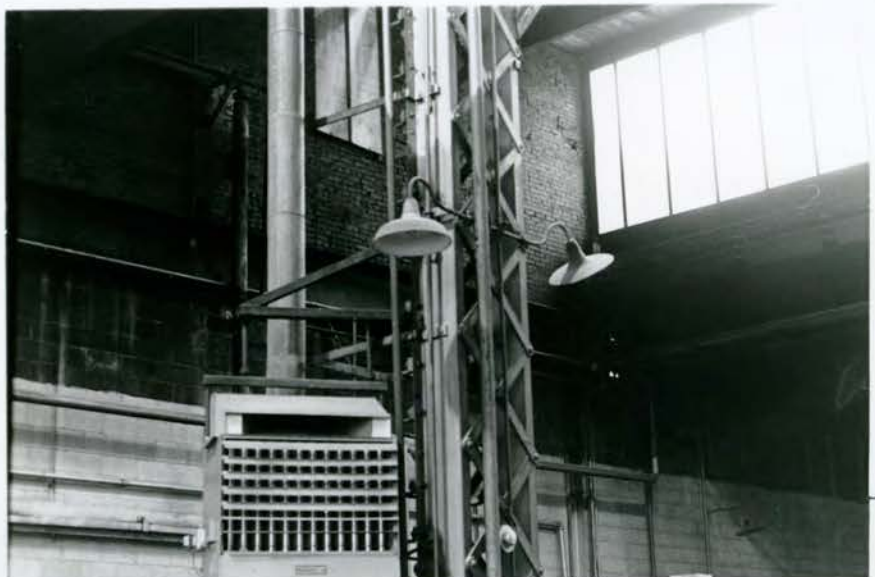
General interior
views.



Over-head crane
←

JAN 21, 1981
L&N R.R.
BIRMINGHAM, ALA.

Interior
Views



JAN 21, 1981
L&N R.P.
IRMINGHAM ALA.



Interior
Views



JAN 21, 1981
L&N R.R.
BIRMINGHAM, ALA.

Structural
Details



JAN 21, 1981
L&N RR
BIRMINGHAM ALA.



JAN 21, 1981
L&N R.R.
BIRMINGHAM, ALA.

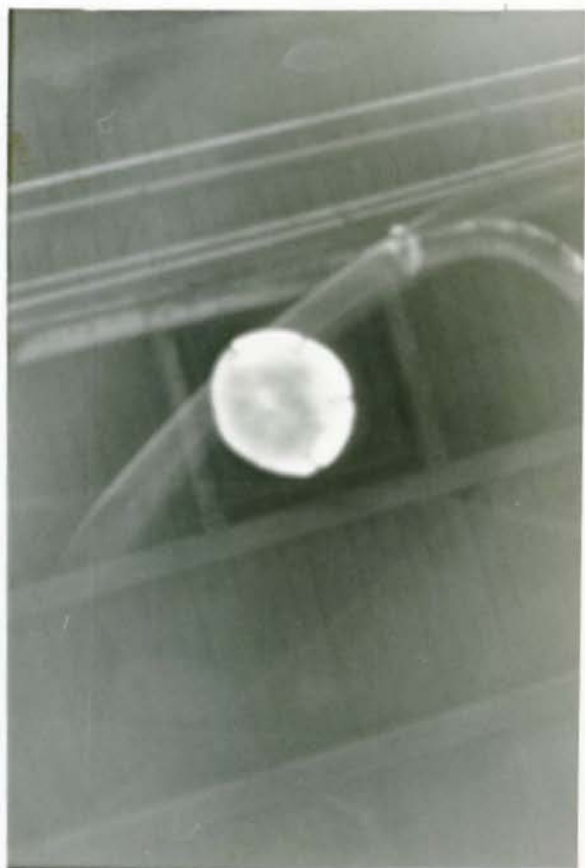
Roof structure
Details



JAN 21, 1981
L&N R.R.
BIRMINGHAM, ALA.



↑ Wood door @ back
wzh



↑ Opening for smoke-jack

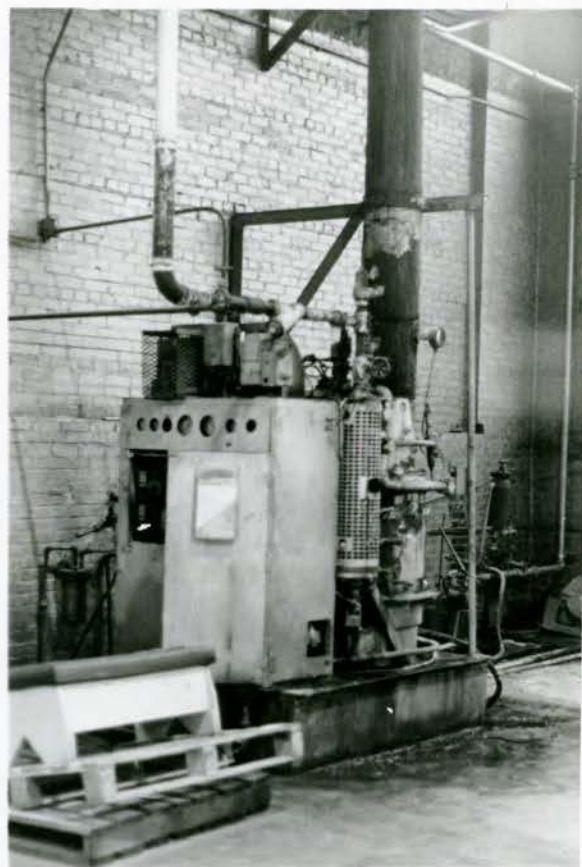


BIRMINGHAM, ALA.
L&N R.R.
JAN 21, 1981



↑ Column Base

↓ Light fixture



↑ Equipment



JAN 21, 1981
L&N R.R.
BIR INCHAM, ALA.



Work pit
←



New drop-pit
(not installed.)



JAN 21, 1981
L&N R.R.
BIRMINGHAM, ALA.

Raised platform

Work pit
~~Drop pit~~ →



Removable rail
Details →



Rail Details →



JAN 21, 1981
L&N R.R.
BIRMINGHAM, ALA.



~~Drop~~
Work pit - drainage pipe
under removable wood stair
at ~~end~~ end of pit.

JAN 21, 1981
L&N R.R.
BIRMINGHAM, ALA.



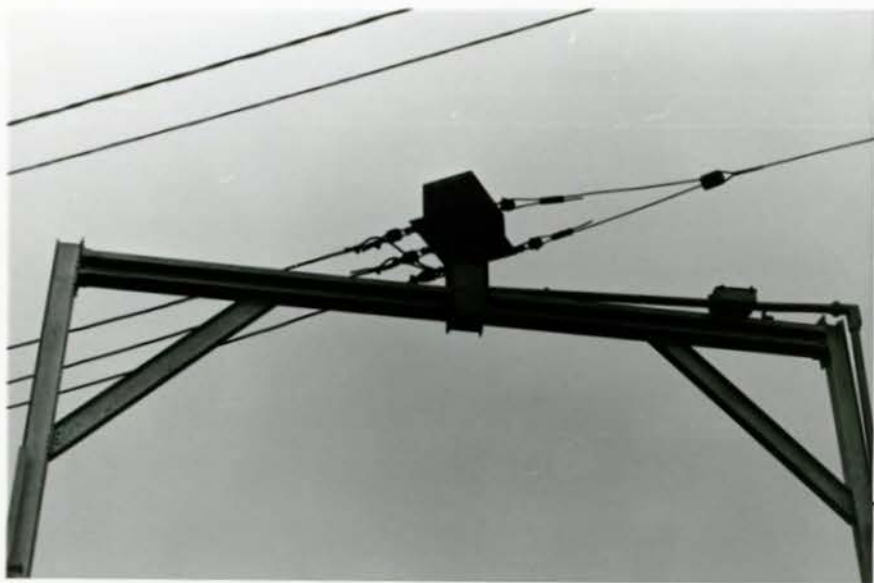
Turn table
L&N Railroad
Birmingham, AL
1/21/81



JAN 21, 1981
L&N R.R.
BIRMINGHAM, ALA.



JAN 21, 1981
L&N R.R.
BIRMINGHAM, ALA.



Electric power
connector.



JAN 21, 1981
L&N R.R.
BIRMINGHAM, ALA.

Control house
←

General Views



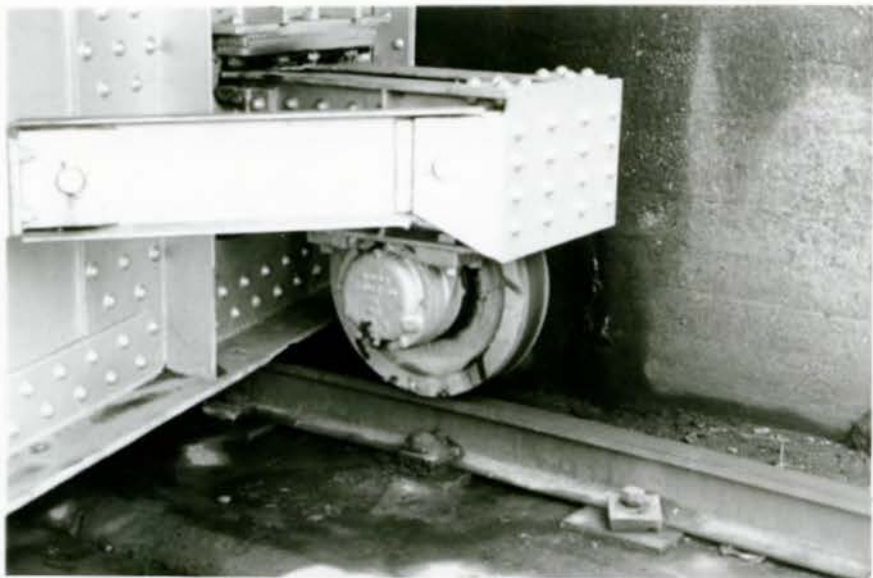
JAN 21, 1981
L&N R.R.
BIRMINGHAM, ALA.



Details

JAN 21, 1981
L&N R.R.
BIRMINGHAM, ALA.

Turn table
Details



JAN 21, 1981
L&N R.R.
BIRMINGHAM, ALA



JAN 21, 1981
L&N R.R.
BIRMINGHAM, ALA.

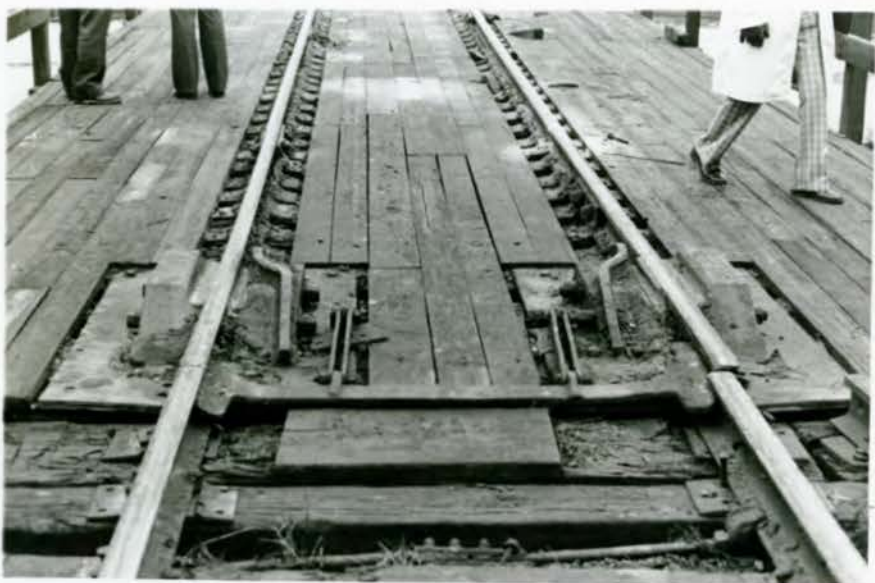


Table / track
connection



JAN 21, 1981
L&N R R
BIRMINGHAM, AL



Table/Track connection



JAN 21, 1981
L&N R.R.
BIRMINGHAM, ALA.



JAN 21, 1981
L&N R R.
BIRMINGHAM, ALA.



Table guide - rail



JAN 21, 1981
L&N R.R.
BIRMINGHAM, ALA.