

JAN 21, 1981
SOUTHERN R.R.
BIRMINGHAM, AL

Southern Railway
Shops 1/21/81
Birmingham, AL
PHOTOS BY RALPH ALLEN



General view
toward machine shops



Views toward
machine shops



JAN 21, 1981
SOUTHERN R.R.
BIRMINGHAM, ALA.



Views from
machine shops



JAN 21, 1981
SOUTHERN R.R.
BIRMINGHAM, ALA.

Over-head
crane →



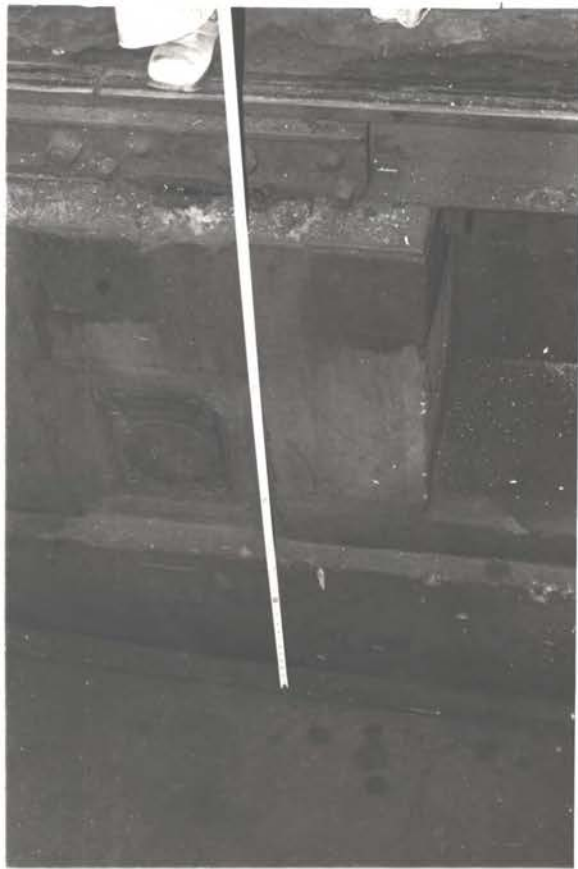
Joist detail →



JAN 21, 1981
SOUTHERN R.R.
BIRMINGHAM, ALA.

Work pit →





↑ Work pit details →

↓ View of pit light & tool shelf.



JAN 21, 1981
SOUTHERN R.R.
BIRMINGHAM, ALA.



↑ Cross tie embedded in concrete



↑ work pit (flooded)

↓ Rail over tool shelf @ work pit.



JAN 21, 1981
SOUTHERN R.R.
BIRMINGHAM, ALA.



Raised rail
cross tie detail
←



Raised rail
←



Work pit cover
←

JAN 21, 1981
SOUTHERN R.R.
BIRMINGHAM, ALA.



↔ Drop pit details



JAN 21, 1981
SOUTHERN R.R.
BIRMINGHAM, ALA.



Drop pit details

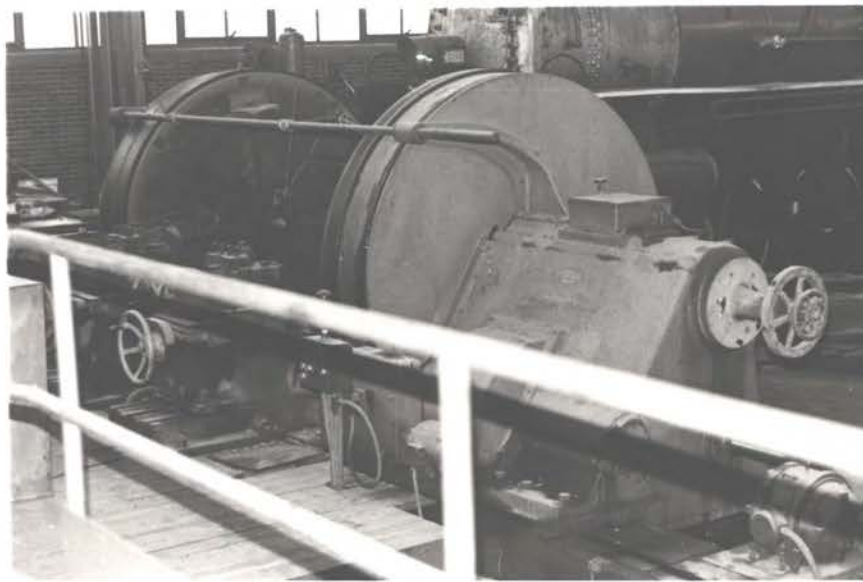
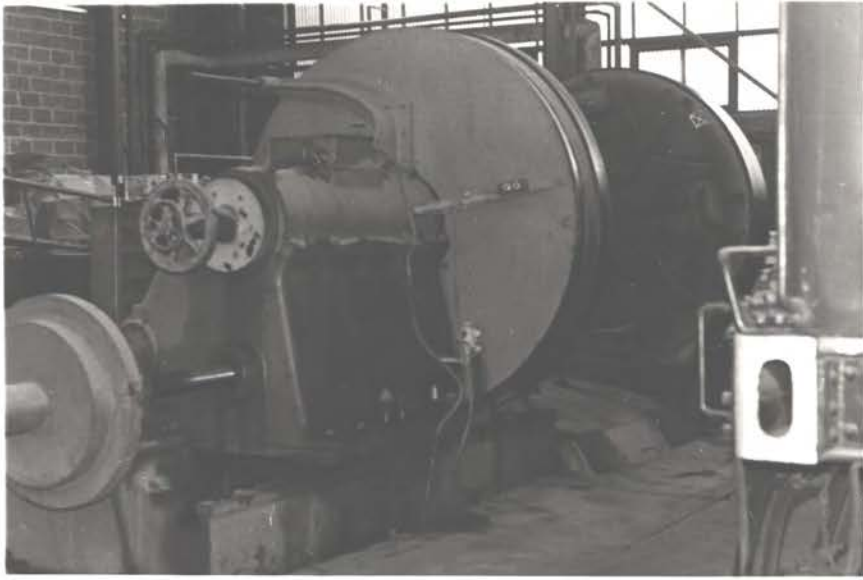


JAN 21, 1981
SOUTHERN R.R.
BIRMINGHAM, ALA.

Drop pit det.



JAN 21, 1981
SOUTHERN R.R.
BIRMINGHAM, ALA.

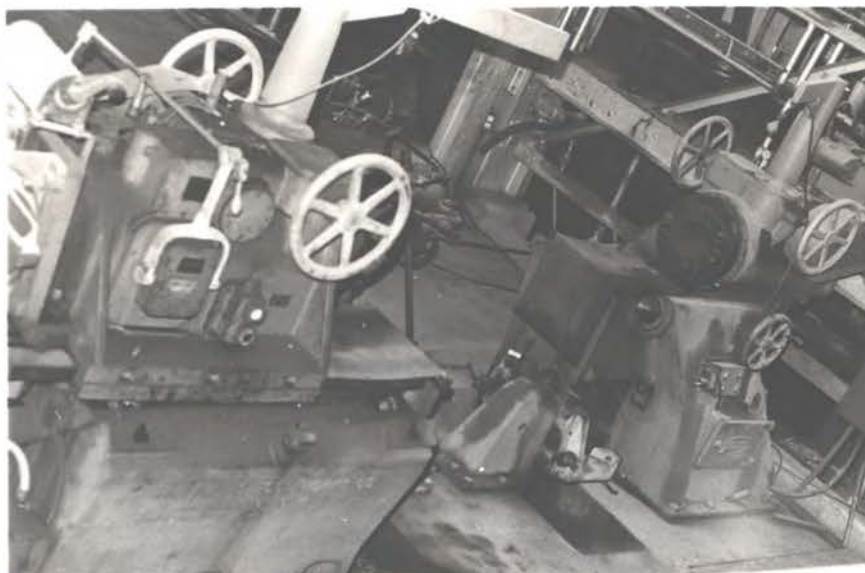


JAN 21, 1981
SOUTHERN R.R.
BIRMINGHAM, ALA.

Wood block floor
in Machine Shop



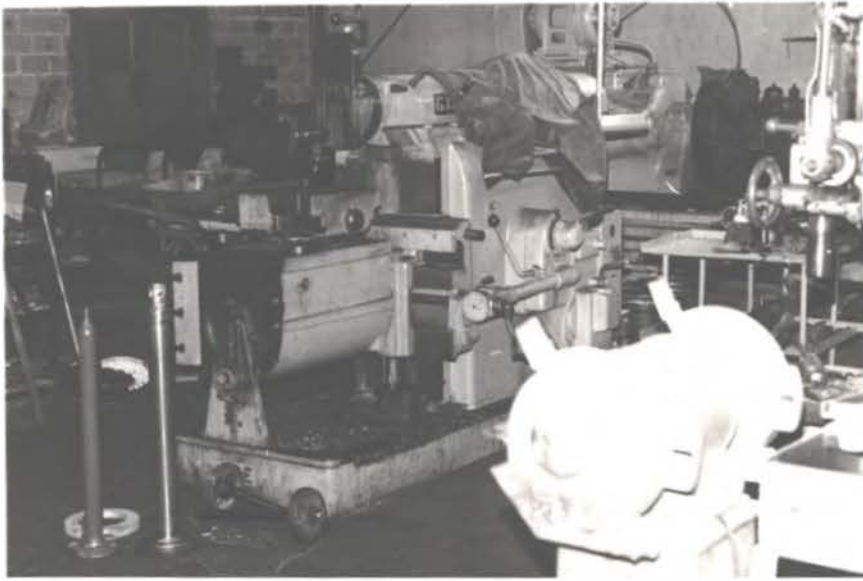
Machine shop →
equipment →



JAN 21, 1981
SOUTHERN R.R.
BIRMINGHAM, ALA.

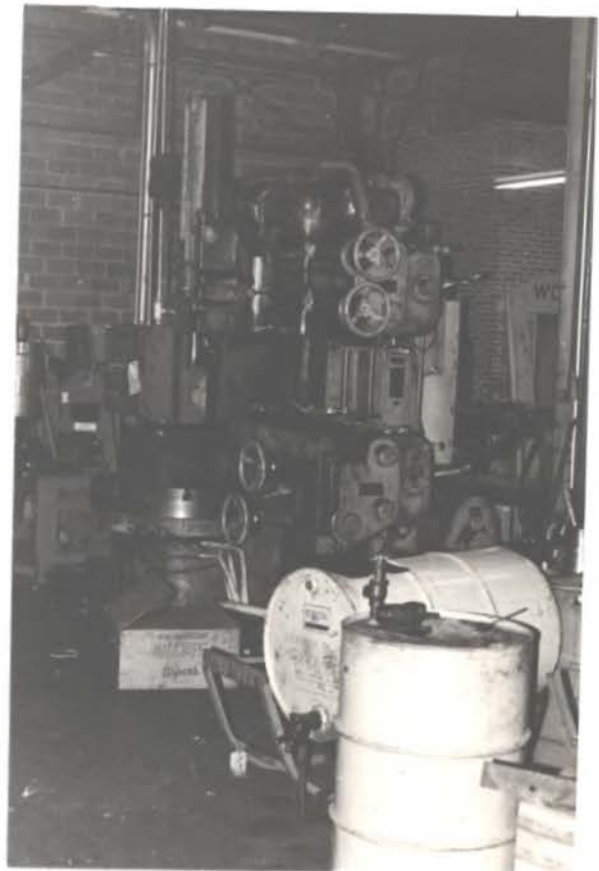


JAN 21, 1981
SOUTHERN R.R.
BIRMINGHAM, ALA.

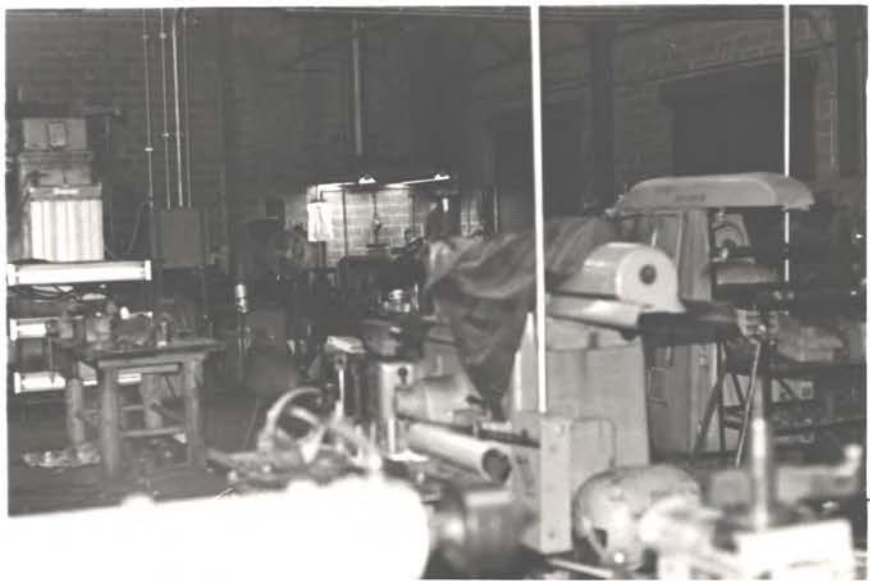


↕ Machine shop equipment

↓ Air hose connection



Machine shop
equipment



JAN 21, 1981
SOUTHERN R.R.
BIRMINGHAM, ALA.



↑ coal elevator details ↓



JAN 21, 1981
SOUTHERN R.R.
BIRMINGHAM, ALA.

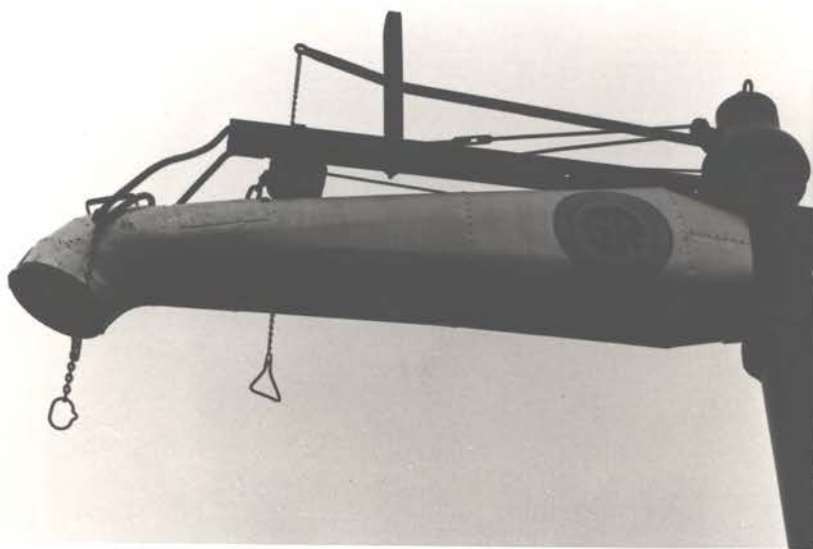


Water Column

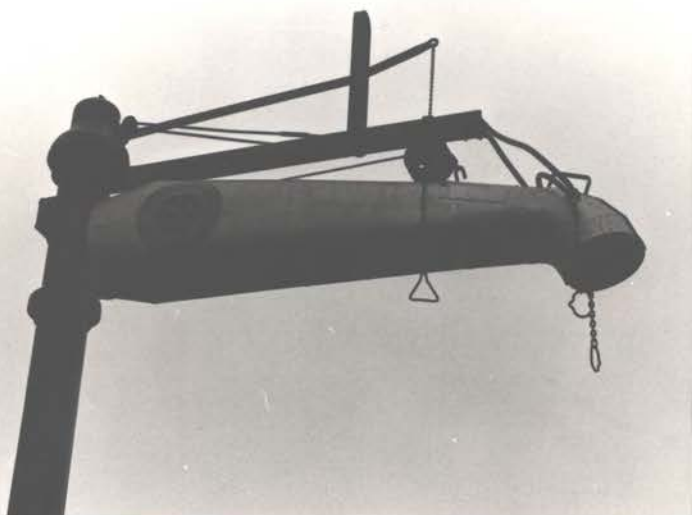
JAN 21, 1981
 SOUTHERN R.R.
 BIRMINGHAM, ALA. Am. Valve & Hydrant. Co.

Jim Greene
 P.O. Box 2727
 Birmingham, AL
 35202





Water Column



JAN 21, 1981
SOUTHERN R.R.
BIRMINGHAM, ALA.



Water Column



JAN 21, 1981
SOUTHERN R.R.
BIRMINGHAM, ALA.



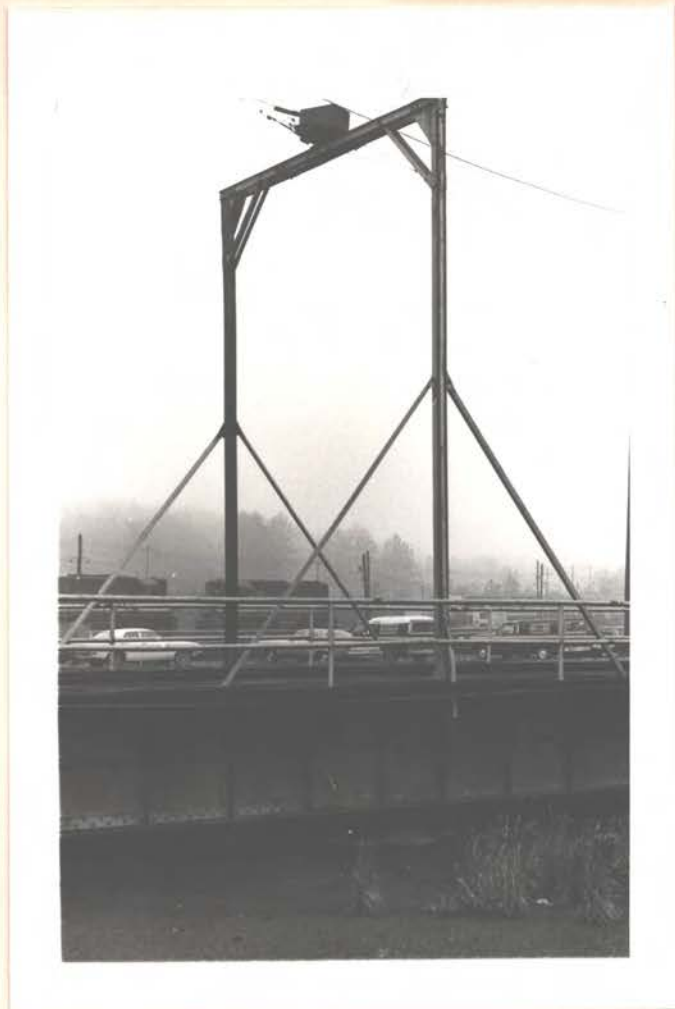


Water Column
pit
←

pit structure
↓



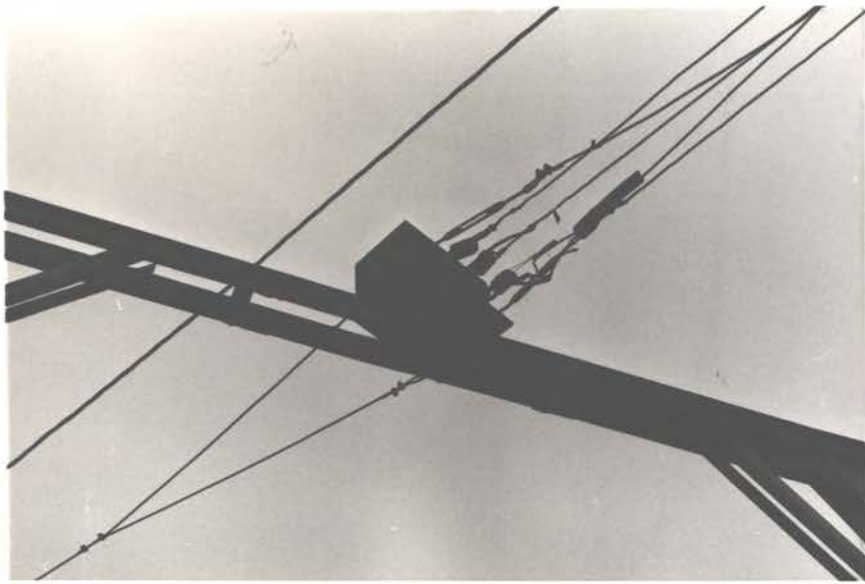
JAN 21, 1981
SOUTHERN R.R.
BIRMINGHAM, ALA.



Turntable
Southern Railway
@ Birmingham Shops
1/21/81



JAN 21, 1981
SOUTHERN R.R.
BIRMINGHAM, ALA.



← Elec. connection

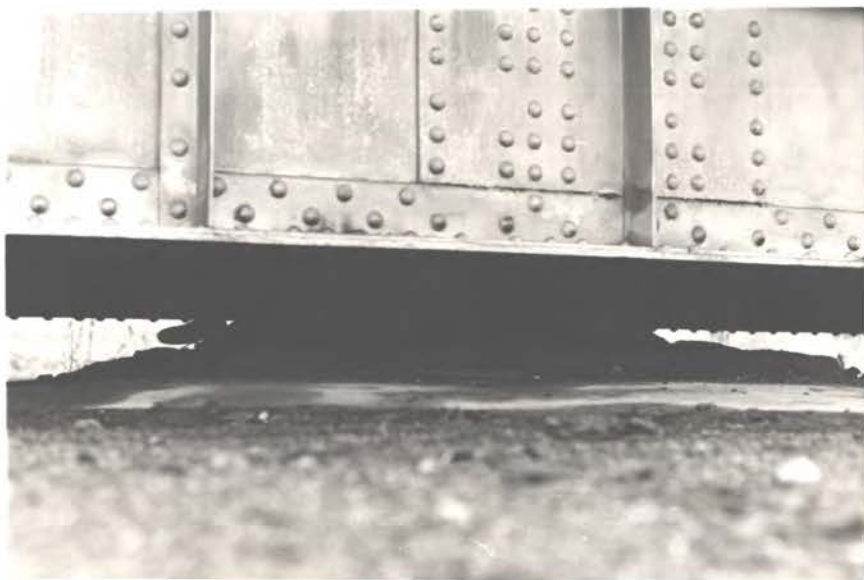


JAN 21, 1981
SOUTHERN R.R.
BIRMINGHAM, ALA.

Electical motor
→



Center bearing
point →



JAN 21, 1981
SOUTHERN R.R.
BIRMINGHAM, ALA.

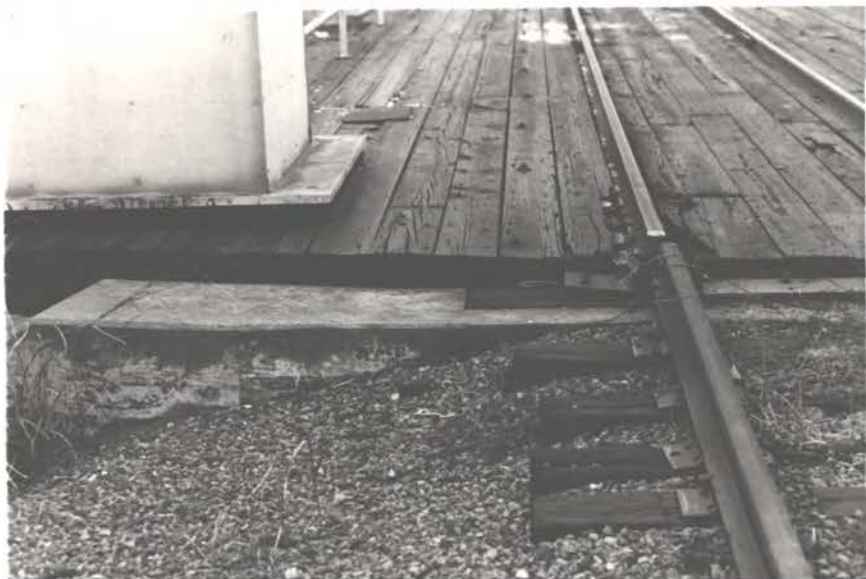


Structural
Details



JAN 21, 1981
SOUTHERN R.R.
BIR INCHAM, ALA.

table/ground
connections



JAN 21, 1981
SOUTHERN R.R.
BIRMINGHAM, ALA.

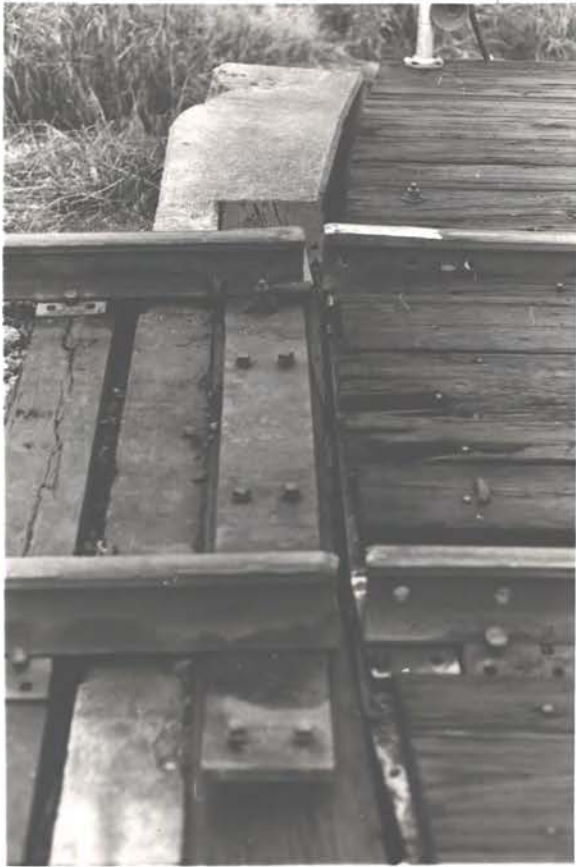


Table ground connections



Table-rail detail

JAN 21, 1981
SOUTHERN R.R.
BIRMINGHAM, ALA.



Table guide tail



JAN 21, 1981
SOUTHERN R.R.
BIRMINGHAM, ALA.