


Scottsboro
Morgan Hse
Ca 1850

photos 1974, HJ

July 1, 1981 HJ

Morgan Weeks, Atty (Owens family)

says hse (front part ) moved to site

& rear wings added later, some in "late 20's or early 30's"

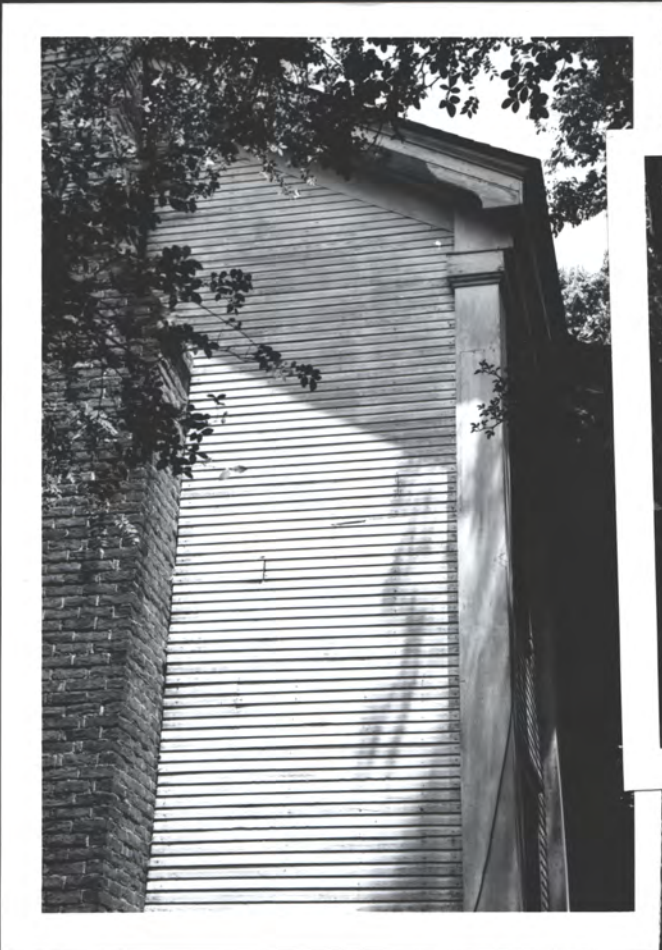
Major remodeling by his father in late 1920's or
early 1930's". He has \pm 40 pg. spec. on that work

P.S. - Demolished
1988

OK 2/21/81
MORGAN HSE
SCOTTSBORO



MORGAN HEE ca 1850
Scottdboro demol-
c. 1980









MORGAN HSE Ca 1850
SCOTTSBURD

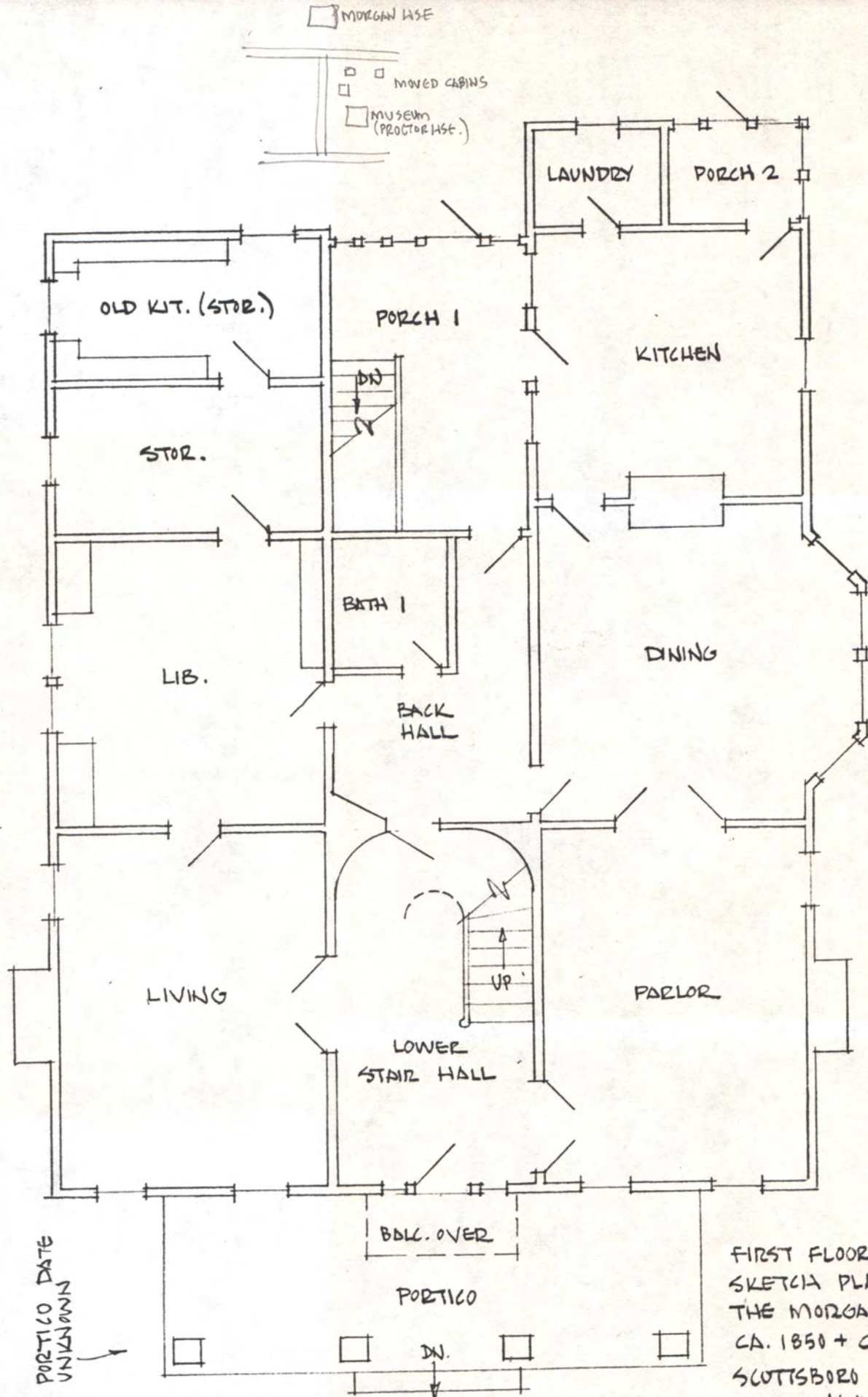


Morgan Hse - Scottsboro 1850's (?) front rms w/ ca 1922 Addn's + remodel. June 1981 photos - HJ Demol. c. 1988



BASED ON TRADITION, & RECOLLECTIONS OF MORGAN WEEKS, SCOTTSBORO, 1 JULY 1981
 RECENT HIS SURVEY INDICATES CA. 1860 CONSTN. OF FRONT PORCHES - ?

CA. 1850? (MINED)?
 POST 1850
 PREDOMINANTLY
 CA. 1922



PORTICO DATE UNKNOWN

BDK. OVER

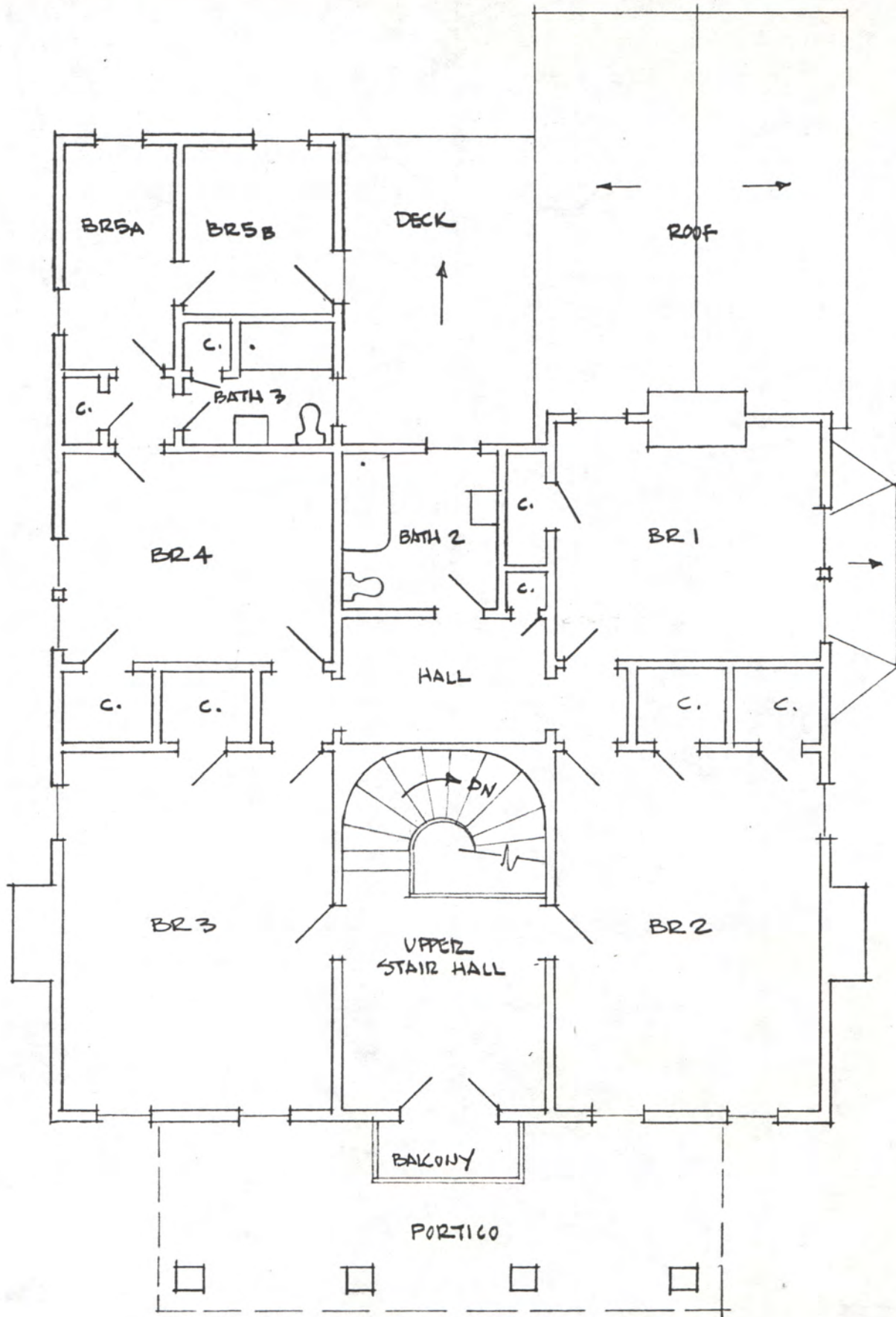
PORTICO

DN.

FIRST FLOOR
 SKETCH PLAN
 THE MORGAN HOUSE
 CA. 1850 + CA. 1930
 SCOTTSBORO, ALABAMA
 APPROX. 1/8" = 1" (VERIFY)
 2 JULY 1981

JONES & HERRIN, ARCHITECTS, A.I.A. - HUNTSVILLE - H.S.

Revised 1988



SECOND FLOOR SKETCH PLAN

THE MORGAN HOUSE - CA. 1850 + CA. 1930

SCOTTSBORO, ALABAMA

2 JULY 1981

APPROX. 1/8" = 1' (VERIFY ALL DIMS.)

JONES & HERRIN, ARCHITECTS, A.I.A. - H 2

Drawn. 1988

